

Umbiella
Creek at
Glen Alice



Wallacia weir fishway



Hawkesbury River at
Brooklyn



Avon & Nepean Dams



Macquarie perch

Macquaria australasica Cuvier

EFFECTS OF CHANNEL MORPHOLOGY, DREDGING & FLOW REGULATION ON WATER QUALITY IN THE HAWKESBURY-NEPEAN RIVER, WITH SPECIAL REFERENCE TO STRATIFICATION

Professor Wayne Erskine¹ & Dr Lisa Turner²

**¹School of Environmental & Life Sciences, University of
Newcastle – Ourimbah Campus**

² Forests NSW, Department of Primary Industries

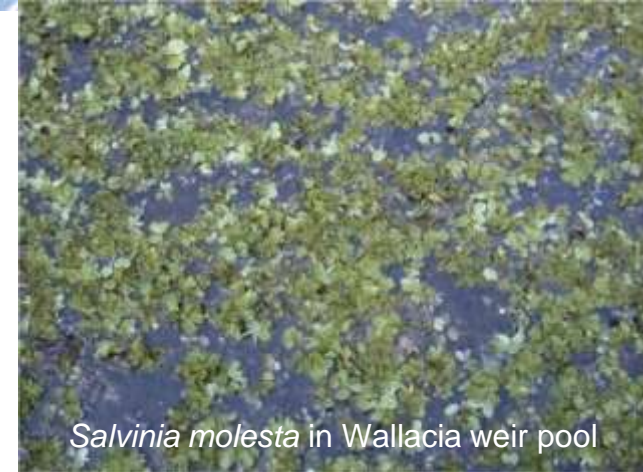
Hawkesbury City Council River Summit, Windsor, 13 August 2008





OUTLINE:

1. Background
2. Channel Morphology
3. Stratification
4. Development, Persistence & Breakdown of Stratification
5. Cyanobacterial Blooms
6. Environmental Flows



Salvinia molesta in Wallacia weir pool

Hawkesbury-Nepean River is a weired & highly regulated river system which is/has been used for recreation, sewerage disposal, water supply and a source of sand & gravel



BACKGROUND

Many water quality monitoring and modeling programs do not acknowledge that stratification may occur in rivers. As a result, only surface waters are sampled and an erroneous assessment of water quality and aquatic habitat quality and availability occurs. Where large interbasin water transfers substantially reduce summer streamflows on rivers with deep pools, persistent stratification is probable (Turner & Erskine 2005). Threshold pool depths may also be involved in the development of stratification so that dredging which increases pool depths and reduce fluvial turbulence may increase the potential for stratification.

22 large dams are present in the Hawkesbury-Nepean River catchment and 15 weirs have been built on the Nepean River alone. Flow regulation and interbasin water transfers for water supply to Sydney and Wollongong can divert all discharges up to $7.87 \text{ m}^3/\text{s}$ from the upper Nepean River and its major tributary, the Cataract River (total catchment area of 896 km^2), as part of the Upper Nepean Water Supply Scheme. Most of Sydney's water supply is sourced from Warragamba Dam, a $2.057 \times 10^9 \text{ m}^3$ capacity dam on the Warragamba River, which is the largest (9000 km^2 catchment) in the Hawkesbury-Nepean catchment. But Goulburn, Gosford-Wyong, Blue Mountains, etc also obtain their water supplies from the Hawkesbury-Nepean catchment.



CHANNEL MORPHOLOGY

Alternating sandstone-confined and floodplain/shale reaches on Hawkesbury-Nepean River (Warner, 1983)

10 homogeneous channel reaches (Erskine, 1998):

Reach 1. Headwaters Reach (8 km) Steep headwaters on Tertiary basalt & Triassic shales

Reach 2. Upper Floodplain Reach (3 km) Floodplain on dip slope of Hawkesbury Sandstone

***Reach 3. Upper Sandstone Gorge** (83 km) Steep gorge with some deep pools

***Reach 4. Camden Alluvial Reach** (33 km) Shale & floodplain with dredged weir pools

***Reach 5. Bents Basin Gorge** (4.3 km) Steep gorge

***Reach 6. Wallacia Alluvial Reach** (10 km) Shale also

***Reach 7. Fairlight Gorge** (26 km) Gorge (deep pools)

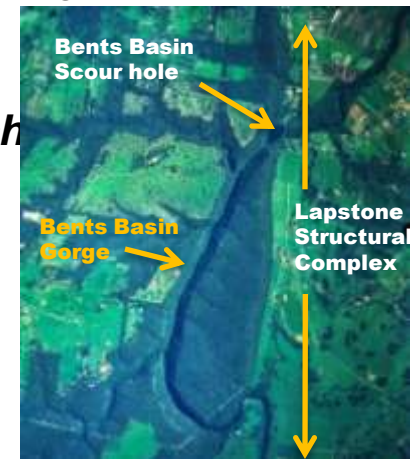
***Reach 8. Penrith Alluvial Reach** (24 km) Extraction

***Reach 9. Windsor Estuarine Reach** (25 km) Tidal freshwater - dredged

Reach 10. Hawkesbury Estuarine Reach (120 km) Tidal and saline

From: Erskine (1998)

Hawkesbury City Council River Summit, Windsor, 13 August 2008





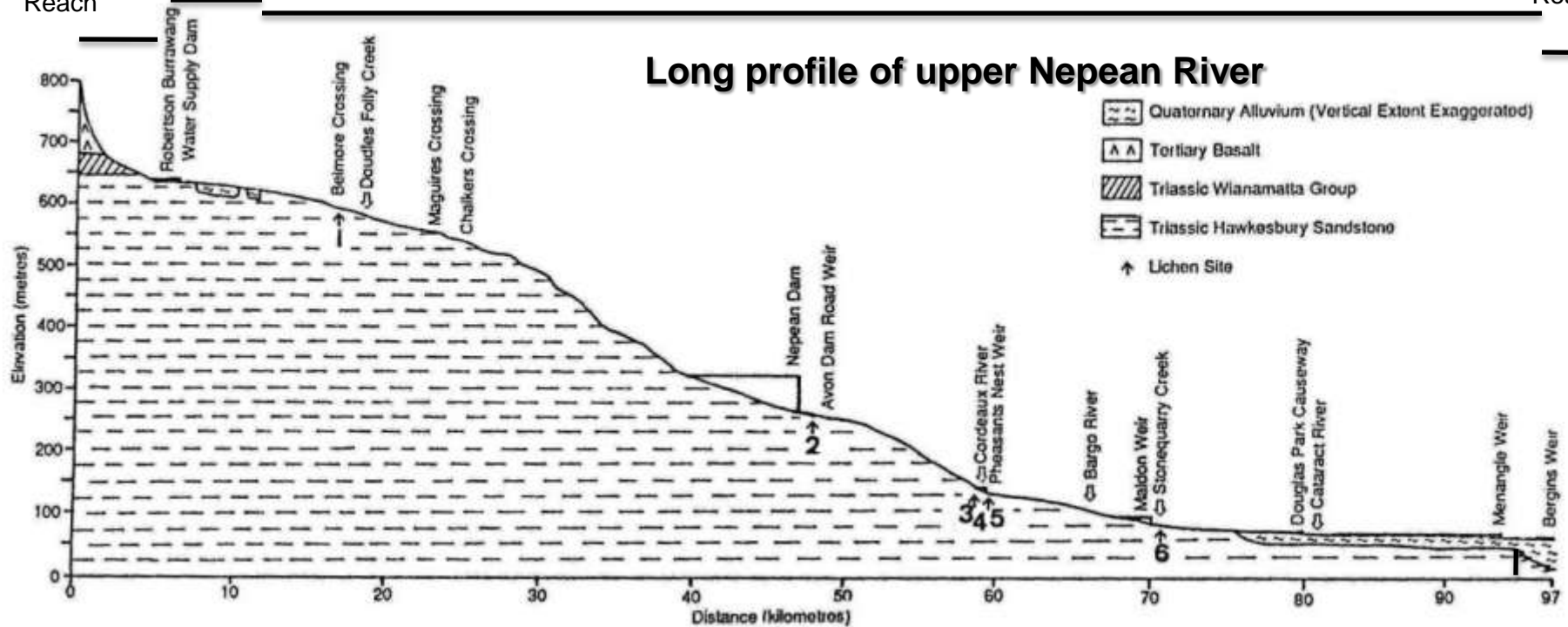
CHANNEL MORPHOLOGY

Camden
Alluvial
Reach

Headwaters
Reach

Upper
Floodplain
Reach

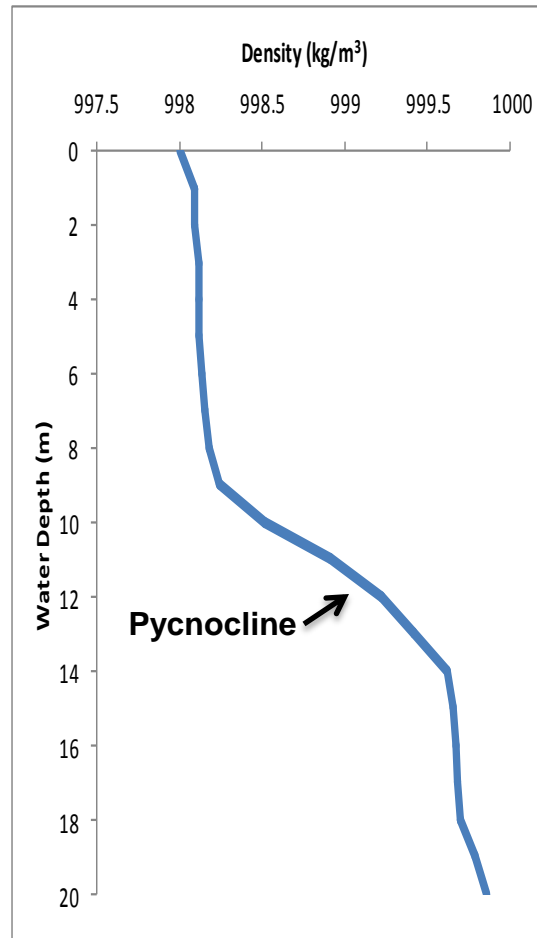
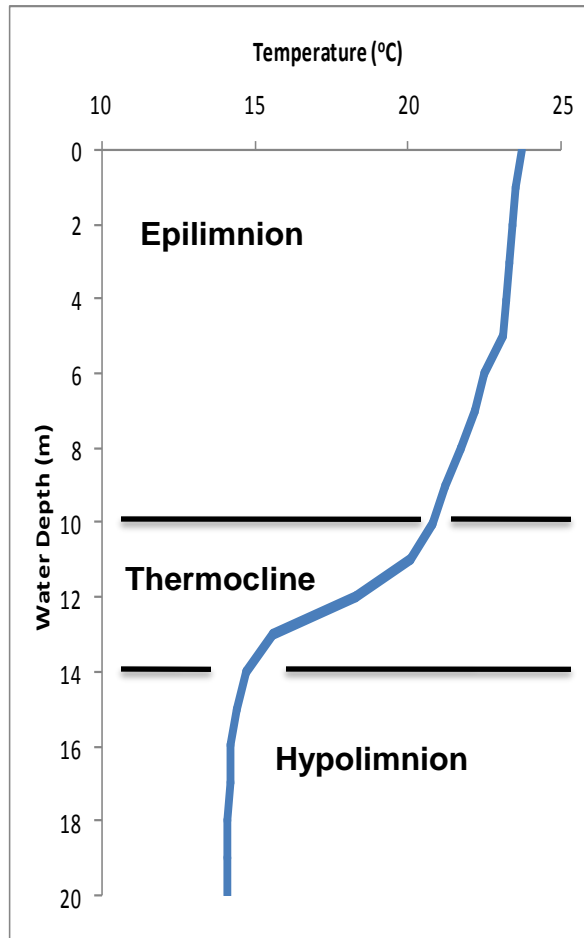
Upper Sandstone Gorge



Deep pools in Upper Sandstone Gorge downstream of Stonequarry Creek, dredge pools in Camden Alluvial Reach, Bents Basin scour pool, deep pools in Fairlight Gorge and dredge pools in Windsor Estuarine Reach investigated



STRATIFICATION



← Temperature and density profiles in Bents Basin, Nepean River, on 20 March 1996

Stratification: development of a 3 layered water body comprising:

- 1. Epilimnion** or surface layer of relatively warm, well oxygenated, well mixed, less dense water;
- 2. Metalimnion** or middle layer where rate of change in water quality parameter is greatest for the depth profile (thermocline, pycnocline, oxycline, chemocline, halocline generally coincide);
- 3. Hypolimnion** or deepest layer of relatively cold, deoxygenated, poorly mixed, less dense water

Stratification supposedly does not develop in well mixed rivers!!!



STRATIFICATION

At commencement of spring in warm temperate regions, increasing solar radiation is absorbed in upper few metres of water body and is dissipated as heat, causing surface waters to expand. Heating decreases density of surface water which thereby becomes separated from the cooler bottom water. With onset of summer, solar radiation continues to increase which further increases density differential to a point where wind cannot mix entire water body. With commencement of autumn and cooler conditions, reductions in solar radiation cause a net loss of heat from the epilimnion. Convection currents and wind promote mixing of the cooling epilimnion which increases in depth as the thermocline weakens. Eventually a point is reached where the difference in temperature and hence density between surface and bottom waters are so slight that resistance to mixing is overcome and water body undergoes complete mixing or overturn, leading to the development of isothermal conditions which persist throughout winter (holomixis). Polymictic water bodies mix frequently, every few days or weeks (Wingecarribee Reservoir). Temporary thermoclines can exist within epilimnion and oxygen stratification can develop when there is only a thermal gradient (no stratification). Salt stratification increases density difference between epi- and hypolimnion and is common in rivers where there are saline groundwater inflows. Such inflows do occur on Nepean River (Turner & Erskine 1997). Salt stratification is common in some types of estuaries (Turner & Erskine 2005). Shallow rivers, estuaries and lakes (floodplain lakes on Macdonald River) are usually well mixed.



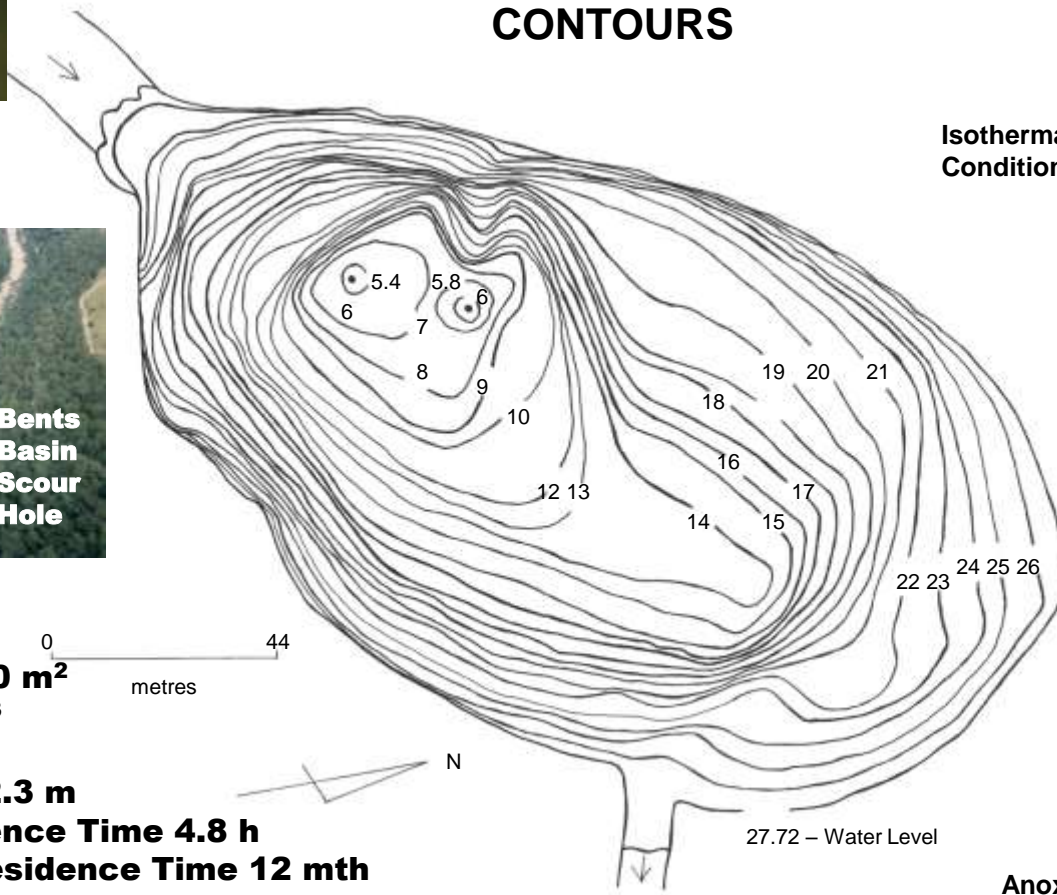
Bents Basin Scour Hole



Bents Basin Scour Hole

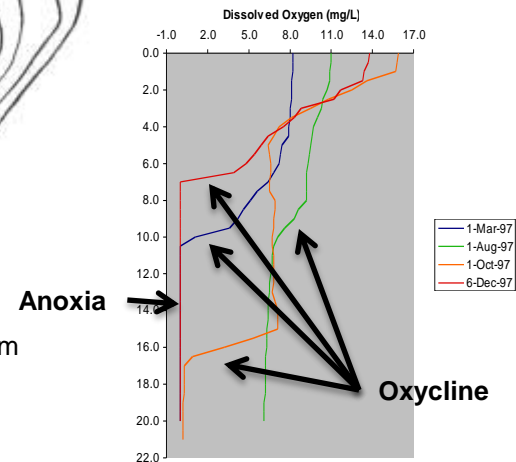
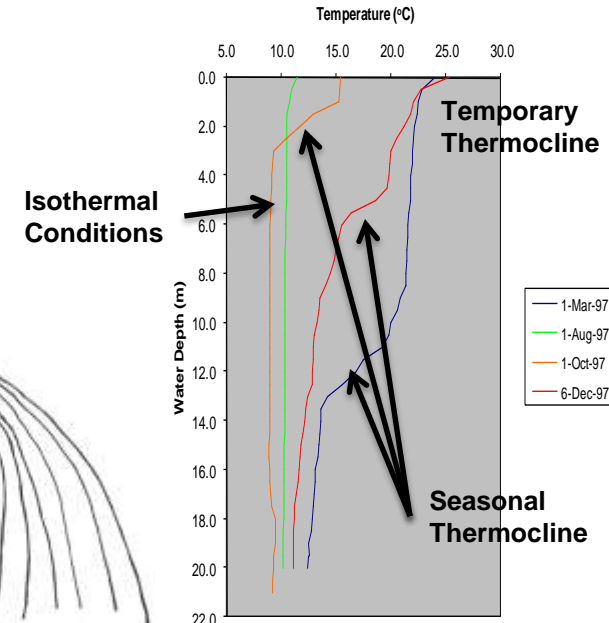
BENTS BASIN SCOUR HOLE

CONTOURS



Surface Area 21000 m²
Volume 160840 m³
Mean Depth 7.7 m
Maximum Depth 22.3 m
Mean Water Residence Time 4.8 h
Maximum Water Residence Time 12 mth

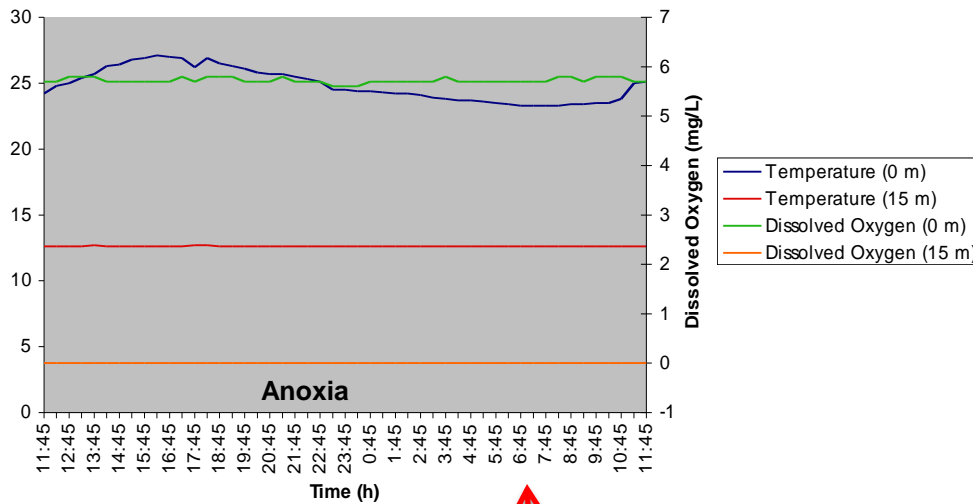
Hawkesbury City Council River Summit, Windsor, 13 August 2008



metres Australian Height Datum

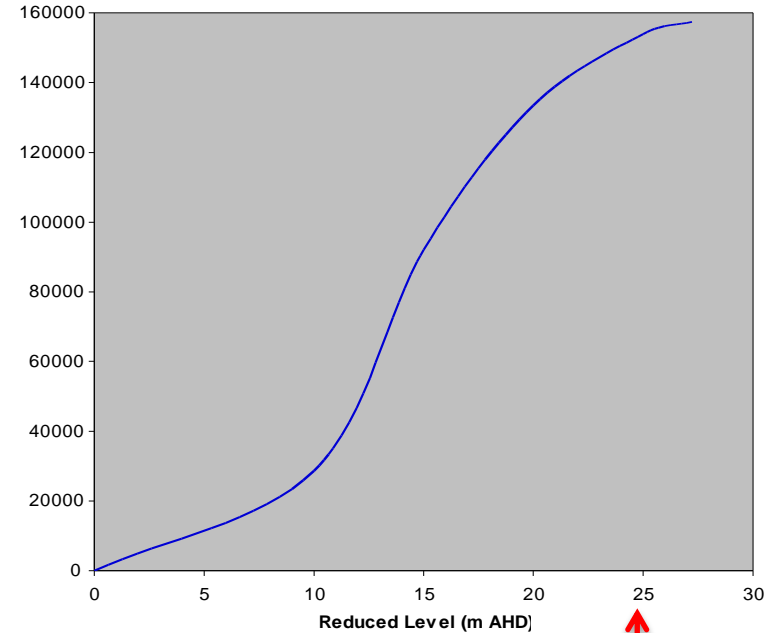


BENTS BASIN SCOUR HOLE



Bents Basin 6-7 March 1996

Datalogging demonstrated that stratification persisted through the night

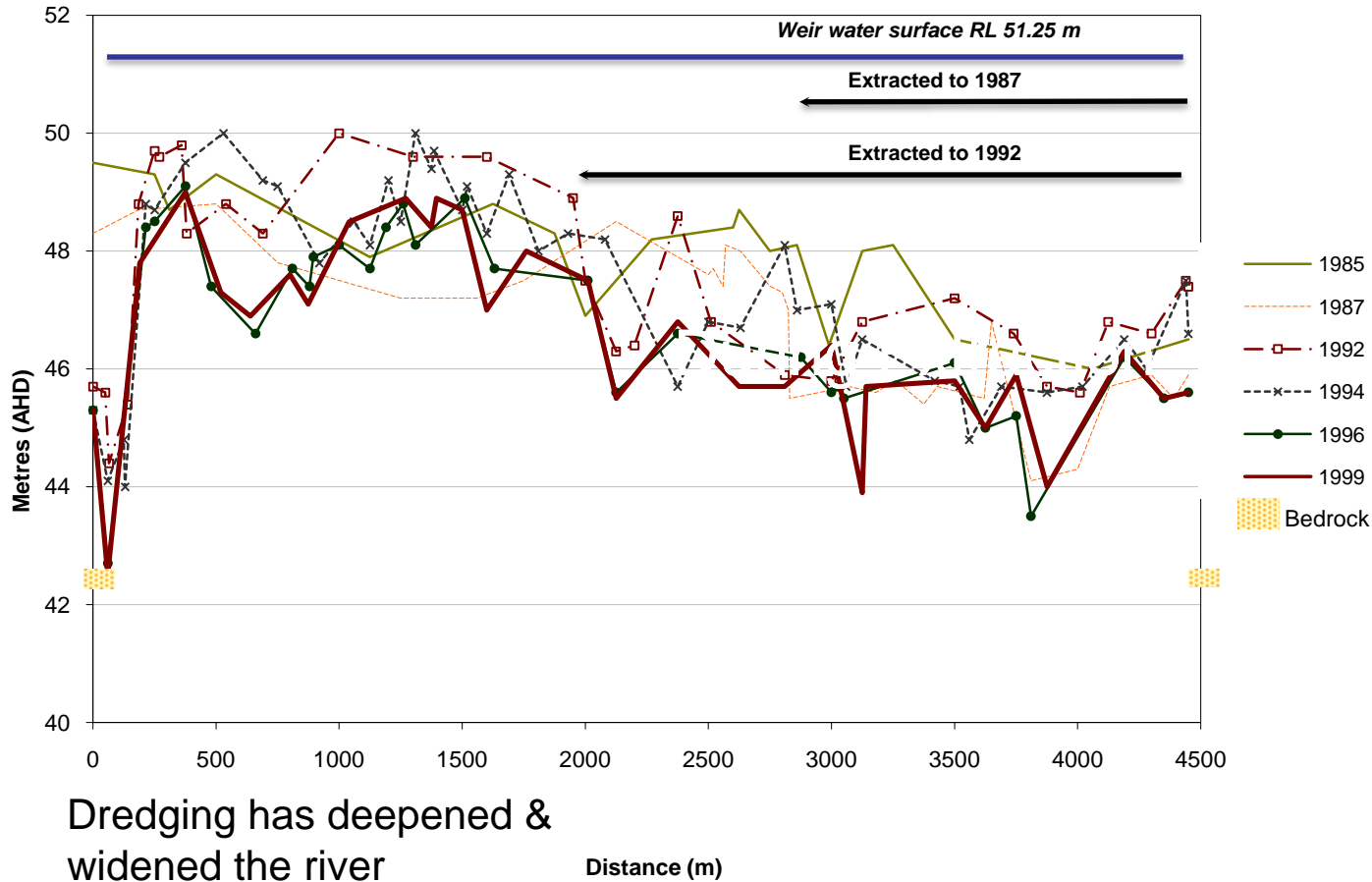


Water surface level (RL) versus volume of Bents Basin

For an oxycline depth of 5 m, 144500 m³ of scour hole biologically unavailable for aerobic organisms, such as fish



COBBITTY WEIR POOL



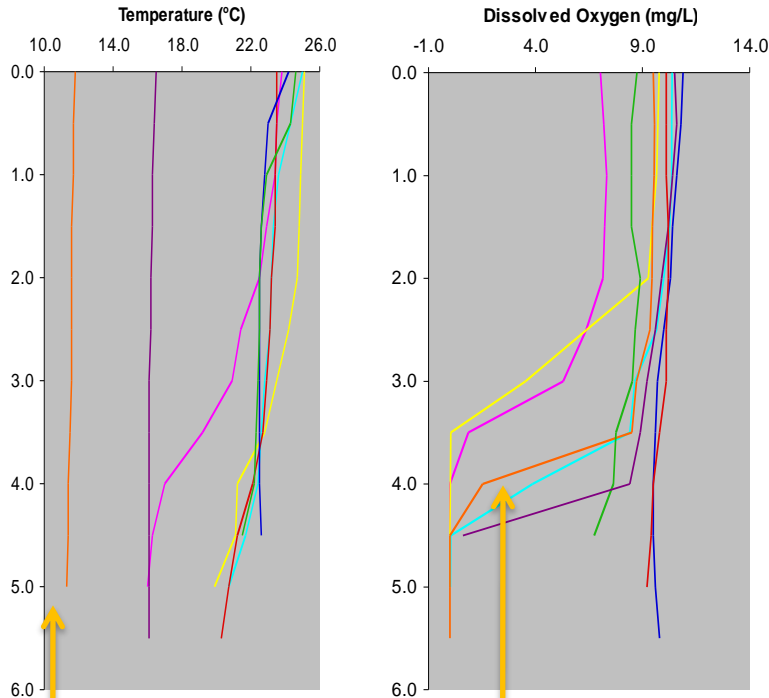
Dredging has deepened & widened the river

Hawkesbury City Council River Summit, Windsor, 13 August 2008





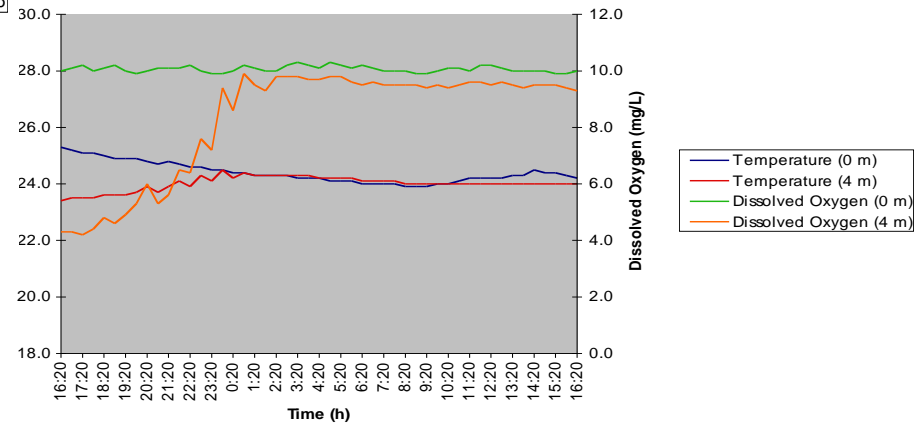
COBBITTY WEIR POOL



- Oxygen stratification can develop & persist in absence of thermal stratification
- Oxygen stratification more biologically important than thermal stratification
- Wind can cause mixing of weir pools

Isothermal profile on 8 March (orange) but strongly oxygen stratified with anoxia below the oxycline

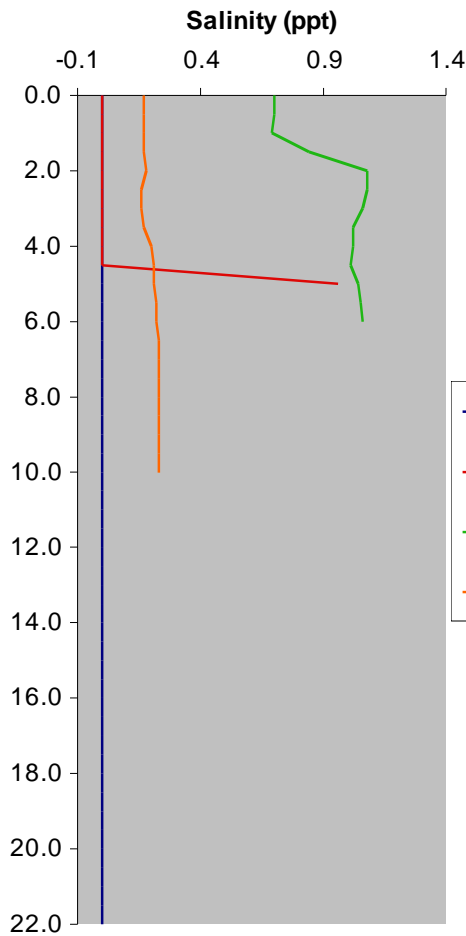
Mixing of Cobbitty Weir pool caused by 50 km/h winds



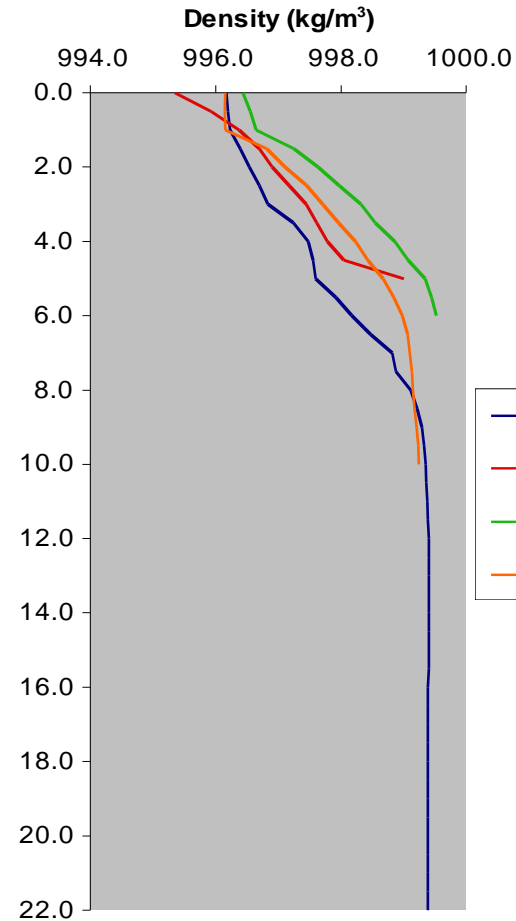
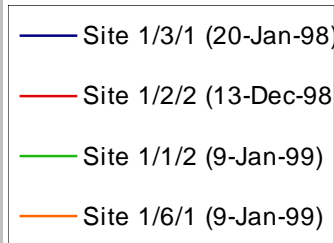
Cobbitty Weir 7-8 March 1996



SALT STRATIFICATION



Saline groundwater inflows into bottom of deep dredge holes near Camden



Only temperature contributes to density increase at sites 1/3 and 1/6 but salinity also important at sites 1/1 and 1/2





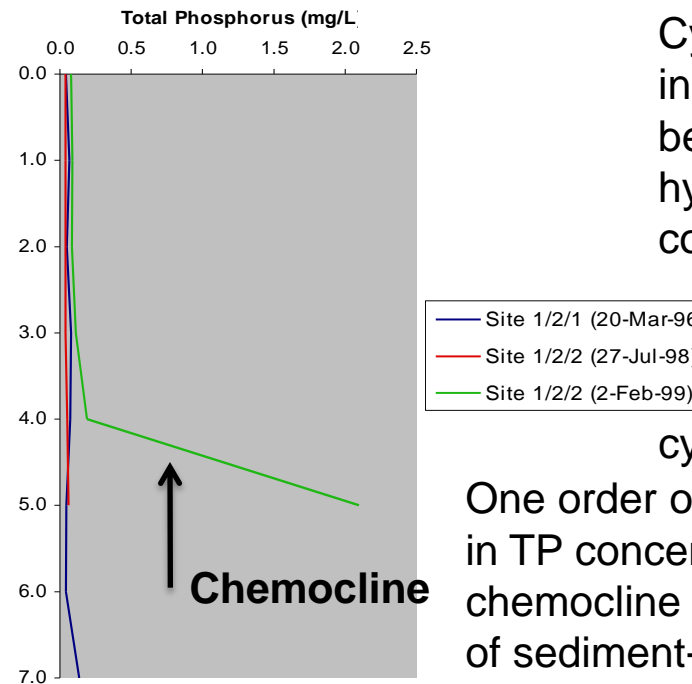
CYANOBACTERIAL BLOOMS



Microcystis aeruginosa cyanobacterial bloom, showing a surface scum in Cobbitty Weir pool, April 1998



Warning sign about blue-green algae erected on bank of the Nepean River at Cobbitty

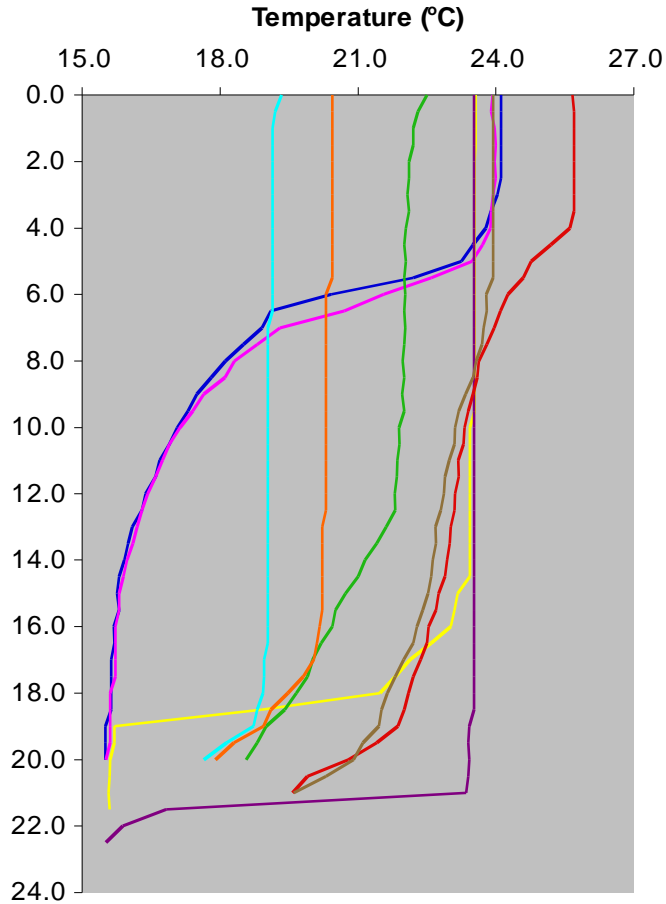


Cyanobacterial blooms in April after holomixis because high hypolimnetic P concentrations mixed with surface waters when temperatures still high enough for cyanobacterial growth

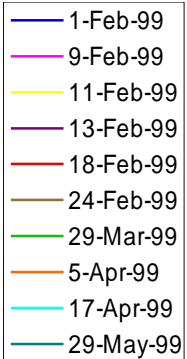
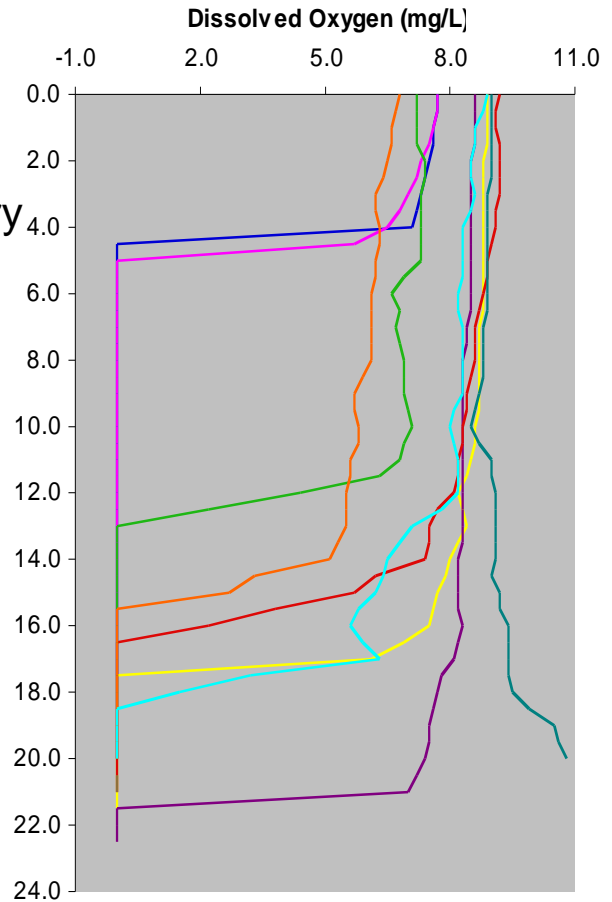
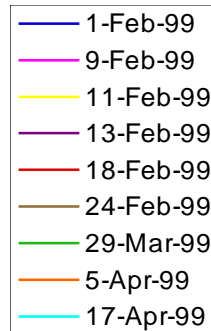
One order of magnitude increase in TP concentration below chemocline because of release of sediment-bound P under anoxic and reducing conditions



ENVIRONMENTAL FLOWS



Bents Basin
Trial release
on 7-14 February
1999





ENVIRONMENTAL FLOWS

Trial environmental release of 7-14 February 1999. These releases did not reach the study sites until 9 February, with maximum mean daily discharges of between 21.7 and 40.7 m³/s being recorded on 10 February. Discharge had returned to pre-release values by 20 February. A thermocline or thermal gradient and oxycline were present at all monitored sites (Sharpes, Cobbitty and Penrith weir pools and Bents Basin) immediately before the release. Stratification generally broke down by entrainment over 2-5 days, with two exceptions. An oxycline persisted in the deep hole at Bents Basin although the depth of the oxycline progressively increased from 4 m on 9 February to 19 m on 11 February to 21 m on 13 February. However, it rose rapidly after the cessation of the release to 14.5 m on 18 February. A similar trend was recorded at the deepest site in Penrith Weir pool. At all sites, a thermocline or thermal gradient and oxycline had redeveloped by late February.



Sharpes Weir before the trial release



$R_L < 20$ slow mixing

$R_L < 2$ fast & complete mixing

Sharpes Weir during the trial release





CONCLUSIONS

1. Thermal gradients and stratification develop and persist in the absence of floods between October and April in deep natural scour pools and dredged weir pools greater than 5 m deep
2. Maximum measured temperature difference of 15.4°C in Bents Basin
3. Oxycines present for the same period but at shallower depths than thermoclines
4. Hypoxia and anoxia common below oxycline and limit aquatic habitat for fish below 5 m in Bents Basin (91.8% of volume) and below 3 m in weir pools (77.8 % of Cobbitty Weir pool)
5. Other factors besides thermal stratification also contribute to oxygen stratification, such as BOD, bacterial respiration, planktonic respiration, plant respiration and chemical oxidation of sedimentary organic matter.
6. Reducing conditions also common below the oxycline
7. Large increases in dissolved TP, Fe, S and Mn below the oxycline
8. Mixing of high nutrient bottom waters during holomixis causes cyanobacterial blooms in weir pools
9. Floods, reservoir releases and strong winds can cause mixing
10. R_L of less than 2 required for rapid mixing by environmental flows
11. R_L between 20 and 2 cause slow mixing which may not completely overturn deep pools
12. Restrictions on dredging depths required (say less than 3 m)
13. Environmental flows must address peak flow velocities and duration to overturn stratified pools



Thank you for your attention. Any questions (at the end of the presentations)?