

# Conservation Priority and Vegetation Condition - Map 10

Hawkesbury City Council

### Legend

**Roads**  
 — Surveied  
 - - - Not Surveied

### Significant Weeds Present

- *Cinnamomum camphora*
- *Cinnamomum camphora*; *Vinca major*
- *Salvinia molesta*
- *Tradescantia fluminensis*

### Threatened Flora

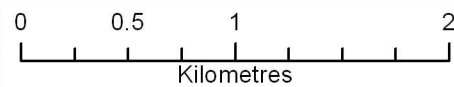
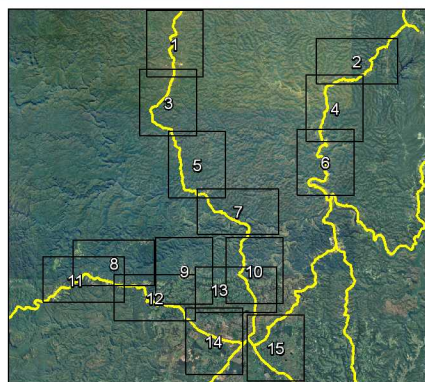
- *Acacia pubescens* (ELA)
- *Grevillea juniperina* subspecies *juniperina* (ELA)
- *Acacia pubescens* (DECCW)
- *Grevillea juniperina* subsp. *juniperina* (DECCW)
- Other (DECCW)

### Conservation Priority

- High
- Medium
- Low

### Condition

- G Good
- M Medium
- P Poor



1:35 000 Printed @ A3

Datum/Projection: GDA 94 MGA 56



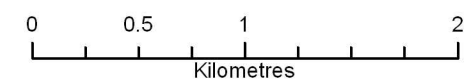
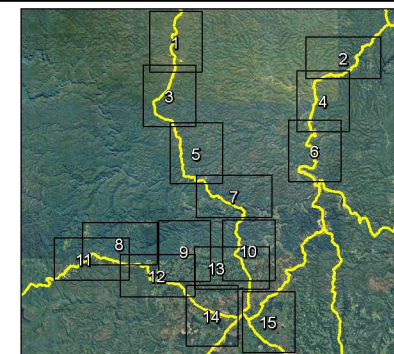
**eco logical**  
 AUSTRALIA

www.ecoaus.com.au



**Legend**

- |                                   |  |                              |                  |
|-----------------------------------|--|------------------------------|------------------|
| <b>Roads</b>                      | <b>Threatened Flora</b>                          | <b>Conservation Priority</b> | <b>Condition</b> |
| — Surveyed                        | ■ Acacia pubescens (ELA)                         | — High                       | G Good           |
| - - - Not Surveyed                | ■ Grevillea junipera subspecies junipera (ELA)   | — Medium                     | M Medium         |
| <b>Significant Weeds Present</b>  | ● Acacia pubescens (DECCW)                       | — Low                        | P Poor           |
| ▬ <i>Tradescantia fluminensis</i> | ● Grevillea juniperina subsp. juniperina (DECCW) |                              |                  |
|                                   | ● Other (DECCW)                                  |                              |                  |



1:35 000 Printed @ A3

Datum/Projection: GDA 94 MGA 56



**Legend**

**Roads**

- Surveyed
- - - Not Surveyed

**Threatened Flora**

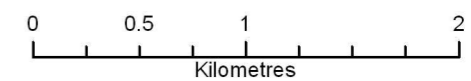
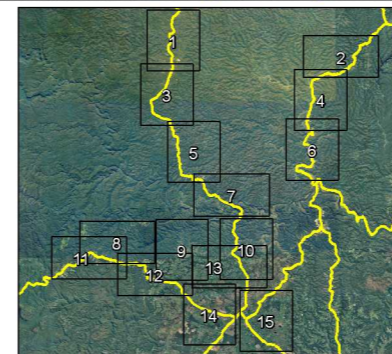
- Acacia pubescens (ELA)
- Grevillea junipera subspecies junipera (ELA)
- Acacia pubescens (DECCW)
- Grevillea juniperina subsp. juniperina (DECCW)
- Other (DECCW)

**Conservation Priority**

- High
- Medium
- Low

**Condition**

- G Good
- M Medium
- P Poor



1:35 000 Printed @ A3

Datum/Projection: GDA 94 MGA 56