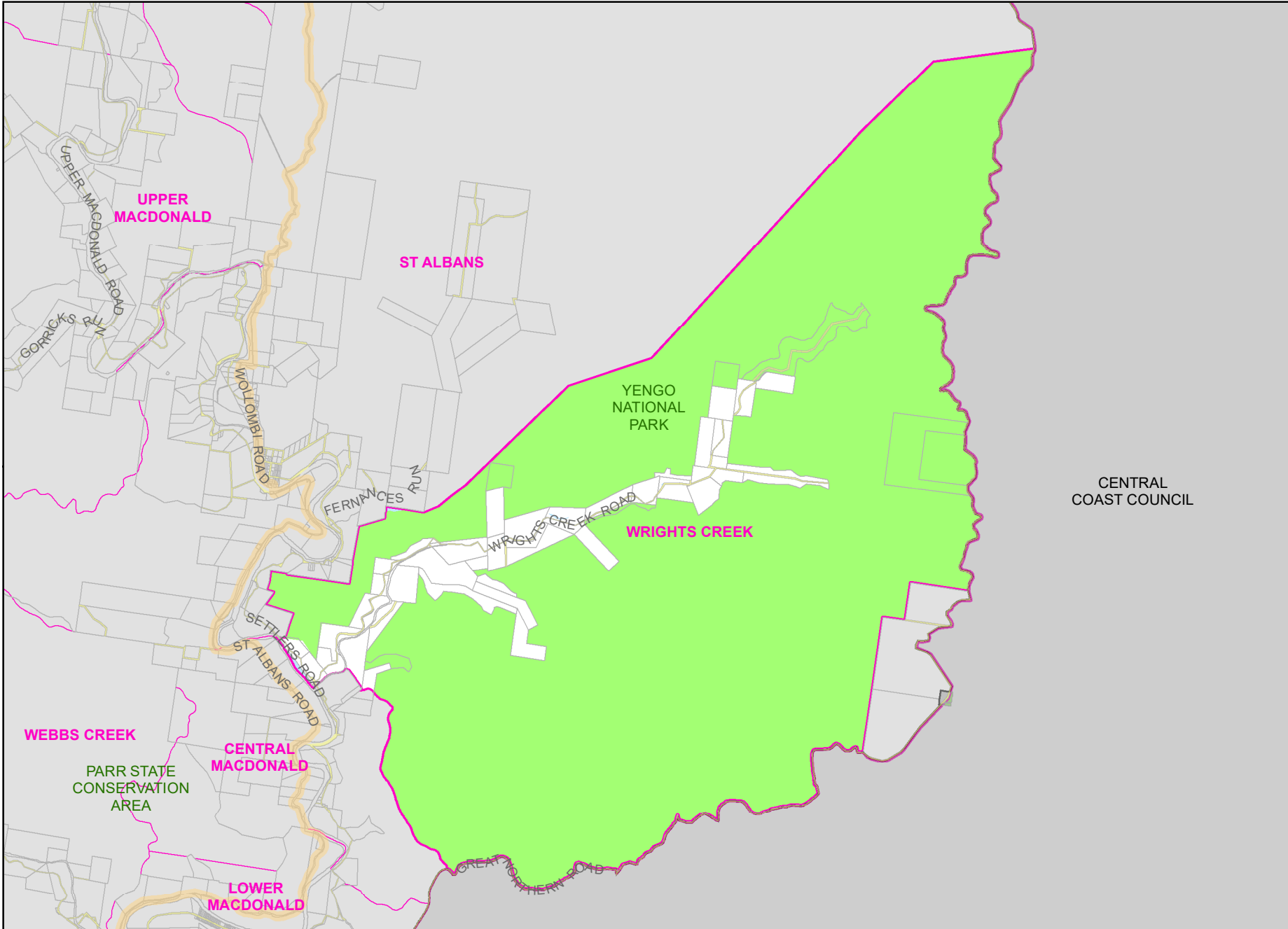




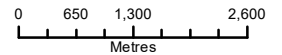
# HAWKESBURY CITY COUNCIL

PO Box 146, Windsor NSW 2756  
Website: [www.hawkesbury.nsw.gov.au](http://www.hawkesbury.nsw.gov.au)  
Email: [council@hawkesbury.nsw.gov.au](mailto:council@hawkesbury.nsw.gov.au)  
Hours: Monday to Friday 8.30am - 5pm  
Phone: (02) 4560 4444



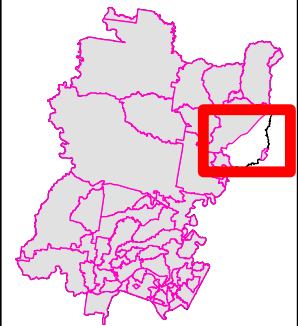
## Legend

- ▲ Schools
- ✚ Bushfire Stations
- Playgrounds
- Train Stations
- +— Rail Line
- Regional Roads
- Local Roads
- Adjoining LGAs
- Land Parcels
- Creeks & Rivers
- Parks & Reserves



1:86,200 @ A4

CENTRAL  
COAST COUNCIL



This map cannot be reproduced without the permission of Hawkesbury City Council. Copyright © Spatial Services 2022. Hawkesbury City Council 2022. The scale displayed is approximate only. Hawkesbury City Council takes no responsibility for any errors or omissions. The assets shown on this map indicate the presence and general location only. Its accuracy or completeness is not guaranteed. Contours are to be used as a guide. A survey may be required for more accuracy.

## WRIGHTS CREEK