



attachments 1, 2, 3
and 4
to
item 37

1. Full Time Equivalents (FTEs)
2. Detailed Consultants Expenditure
3. Detailed Legal Expenditure
4. Ecological Australia Reports

date of meeting: 23 February 2021
location: council chambers and
by audio-visual link
time: 6:30 p.m.

AT 1 - Full Time Equivalents - (FTEs)

Area	#	14/15	15/16	16/17	17/18	18/19	19/20	20/21 FTE as 31/12/20	Diff	Summary of Changes
	No.	9.00	9.00	9.00	9.00	9.00	11.00	11.00		
Executive Management	FTE	9.00	9.00	9.00	9.00	9.00	11.00	11.00	0.00	
	No.	6.20	6.46	6.46	6.46	5.46	5.46	4.60		Transfer of Insurance Officer Corp Governance (-0.50 FTE) ERM Manager reinstated to fulltime (0.50 FTE) Injury Management Officer removed as Council uses a contractor (-0.6 FTE) WHS Training Officer increased to fulltime (0.14 FTE) WHS Administration Officer decreased from fulltime to part time (-0.40 FTE)
Risk Management	FTE	6.20	6.46	6.46	6.46	5.46	5.46	4.60	-0.86	
	No.	3.00	3.00	3.00	4.00	4.00	8.31	8.54		Review of VIC opening hours (0.02 FTE) New position - Digital Media and Engagement Lead (0.21 FTE)
Communication and Events	FTE	3.00	3.00	3.00	4.00	4.00	8.31	8.54	0.23	
	No.	1.77	1.77	2.00	2.00	2.60	3.60	3.60		
Human Resources	FTE	1.77	1.77	2.00	2.00	2.60	3.60	3.60	0.00	
	No.	4.40	4.40	4.40	4.40	4.40	5.20	5.20		
Community Partnerships	FTE	4.40	4.40	4.40	4.40	4.40	5.20	5.20	0.00	
	No.	18.03	17.91	17.91	17.31	17.31	17.31	17.31		
Customer Service	FTE	18.03	17.91	17.91	17.31	17.31	17.31	17.31	0.00	
	No.	15.00	15.00	15.00	15.00	14.00	15.20	19.00		Transfer of Insurance Officer Corp Governance and increase in hours (0.60 FTE) New position - Governance Coordinator (1.0 FTE) New position - Senior Governance Officer (1.0 FTE) Resinstatement of Internal Auditor Coordinator position (0.6 FTE) Vacant Administration Support Officer not required (-0.40 FTE) Property Administration Officer transferred as a Governance Officer to Corp Governance (1.0 FTE)
Corporate Governance	FTE	15.00	15.00	15.00	15.00	14.00	15.20	19.00	3.80	
	No.	3.00	3.00	3.00	3.00	3.00	4.00	3.00		Property Administration Officer transferred as a Governance Officer to Corp Governance (-1.0 FTE)
Property Services	FTE	3.00	3.00	3.00	3.00	3.00	4.00	3.00	-1.00	
	No.	24.87	25.07	24.47	24.47	24.47	22.06	22.69		Increase in total Library hours from 575.01 to 597.26 (0.63 FTE) Restructure of Gallery and Museum: Volunteer coordinator role repurposed to become Museum Curator - no change to FTE Marketing and Audience Development Co-Ordinator - Cultural Services repurposed to Creative Programs Coordinator - no change to FTE
Cultural Services	FTE	24.87	25.07	24.47	24.47	24.47	22.06	22.69	0.63	
	No.	23.20	23.60	23.60	23.60	23.60	21.20	21.20		
Finance	FTE	23.20	23.60	23.60	23.60	23.60	21.20	21.20	0.00	
	No.	11.00	11.00	11.00	11.00	11.00	12.40	12.40		
Information Services	FTE	11.00	11.00	11.00	11.00	11.00	12.40	12.40	0.00	
	No.	30.04	30.04	30.04	30.04	30.04	31.04	33.04		New position - Technical Officer - SMF (1.0 FTE) New position - Domestic Waste Coordinator (1.0 FTE)
Environment & Regulatory Services	FTE	30.04	30.04	30.04	30.04	30.04	31.04	33.04	2.00	
	No.	12.83	15.83	14.91	16.91	16.00	18.00	18.00		Temporary Building Officer position was a two year fixed term which has now expired (-1.0 FTE) New position - Swimming Pool Compliance Officer (1.0 FTE)
Development Services	FTE	12.83	15.83	14.91	16.91	16.00	18.00	18.00	0.00	
	No.	6.00	7.00	7.40	7.40	7.00	10.00	8.00		Strategic Planner - Heritage and Urban Design - no longer in structure - never recruited (-1.0 FTE) Coordinator Transport Planner - no longer in structure - never recruited (-1.0 FTE)
Strategic Planning	FTE	6.00	7.00	7.40	7.40	7.00	10.00	8.00	-2.00	
	No.	1.00	1.00	1.00	1.00	1.00	2.60	2.60		
City Design & Economic Development	FTE	1.00	1.00	1.00	1.00	1.00	2.60	2.60	0.00	
	No.	10.00	10.00	10.00	10.00	10.00	10.60	10.00		Building Services Support Officer (Fixed Term 2 years) expired (-0.60 FTE)
Building Services	FTE	10.00	10.00	10.00	10.00	10.00	10.60	10.00	-0.60	

Area	#	14/15	15/16	16/17	17/18	18/19	19/20	20/21 FTE as 31/12/20	Diff	Summary of Changes
	No.	36.00	36.00	38.00	38.00	38.33	40.00	40.00		
Construction & Maintenance	FTE	36.00	36.00	38.00	38.00	38.33	40.00	40.00	0.00	
	No.	9.00	9.00	9.00	9.00	9.00	10.00	10.00		
Design & Mapping	FTE	9.00	9.00	9.00	9.00	9.00	10.00	10.00	0.00	
	No.	27.60	27.60	27.60	28.00	27.33	31.00	31.00		
Parks & Recreation	FTE	27.60	27.60	27.60	28.00	27.33	31.00	31.00	0.00	
	No.	25.40	25.40	25.40	25.43	25.23	26.23	28.20		New position - Major Plant Operator - Landfill Operations (1.0 FTE) Weighbridge Attendants - rostered so now all are budgeted (0.97 FTE)
Waste Management	FTE	25.40	25.40	25.40	25.43	25.23	26.23	28.20	1.97	
	No.	6.00	6.00	6.00	6.00	6.00	10.06	10.06		
Executive Operations	FTE	6.00	6.00	6.00	6.00	6.00	10.06	10.06	0.00	
	No.	0.29	0.29	0.29	0.29	0.29	0.29	0.29		
Fire Control	FTE	0.29	0.29	0.29	0.29	0.29	0.29	0.29	0.00	
Net Total	FTE	283.63	288.37	289.48	292.31	289.06	315.56	319.73	4.17	Overall change in FTE

Area	#	14/15		Summary of Changes
	No.	9		
Executive Management	FTE	9		
	No.	6.2		
Risk Management	FTE	6.2		
	No.	3		
Communication and Events	FTE	3		
	No.	1.77		
Human Resources	FTE	1.77		
	No.	4.4		
Community Partnerships	FTE	4.4		
	No.	18.03		
Customer Service	FTE	18.03		
	No.	15		
Corporate Governance	FTE	15		
	No.	3		
Property Services	FTE	3		
	No.	24.87		VIC staff moved from casuals to PPT (2.31 FTE)
Cultural Services	FTE	24.87		
	No.	23.2		
Finance	FTE	23.2		
	No.	11		
Information Services	FTE	11		
	No.	30.04		
Environment & Regulatory	FTE	30.04		
	No.	12.83		
Development Services	FTE	12.83		
	No.	6		
Strategic Planning	FTE	6		
	No.	1		
City Design & Economic	FTE	1		
	No.	10		
Building Services	FTE	10		
	No.	36		
Construction & Maintenance	FTE	36		
	No.	9		
Design & Mapping	FTE	9		
	No.	27.6		
Parks & Recreation	FTE	27.6		

Area	#	14/15		Summary of Changes
	No.	25.4		
Waste Management	FTE	25.4		
	No.	6		
Executive Operations	FTE	6		
	No.	0.29		
Fire Control	FTE	0.29		
Net Total	FTE	283.63	0	Overall change in FTE

Area	#	14/15	15/16	Diff	Summary of Changes
	No.	9.00	9.00	0.00	
Executive Management	FTE	9.00	9.00	0.00	
	No.	6.20	6.46	0.26	WHS Training Officer increased by 9 hours (0.26 FTE)
Risk Management	FTE	6.20	6.46	0.26	
	No.	3.00	3.00	0.00	
Communication and Events	FTE	3.00	3.00	0.00	
	No.	1.77	1.77	0.00	
Human Resources	FTE	1.77	1.77	0.00	
	No.	4.40	4.40	0.00	
Community Partnerships	FTE	4.40	4.40	0.00	
	No.	18.03	17.91	-0.12	Reduction of 4 hours across the department (-0.12 FTE)
Customer Service	FTE	18.03	17.91	-0.12	
	No.	15.00	15.00	0.00	
Corporate Governance	FTE	15.00	15.00	0.00	
	No.	3.00	3.00	0.00	
Property Services	FTE	3.00	3.00	0.00	
	No.	24.87	25.07	0.20	Library - increase of 6.5 hours across the department (0.20 FTE)
Cultural Services	FTE	24.87	25.07	0.20	
	No.	23.20	23.60	0.40	Part time Purchasing Administration Officer positions - increase in combined hours from 35 to 49 hours (0.40 FTE)
Finance	FTE	23.20	23.60	0.40	
	No.	11.00	11.00	0.00	
Information Services	FTE	11.00	11.00	0.00	
	No.	30.04	30.04	0.00	
Environment & Regulatory Services	FTE	30.04	30.04	0.00	
	No.	12.83	15.83	3.00	New position - Duty Officer (1.0 FTE) 2 Fixed Term positions to Nov 2015 - (2.0 FTE)
Development Services	FTE	12.83	15.83	3.00	
	No.	6.00	7.00	1.00	Waste Education Officer previously grant funded made permanent (1.0 FTE)
Strategic Planning	FTE	6.00	7.00	1.00	
	No.	1.00	1.00	0.00	
City Design & Economic Development	FTE	1.00	1.00	0.00	
	No.	10.00	10.00	0.00	
Building Services	FTE	10.00	10.00	0.00	
	No.	36.00	36.00	0.00	
Construction & Maintenance	FTE	36.00	36.00	0.00	
	No.	9.00	9.00	0.00	
Design & Mapping	FTE	9.00	9.00	0.00	

Area	#	14/15	15/16	Diff	Summary of Changes
	No.	27.60	27.60	0.00	
Parks & Recreation	FTE	27.60	27.60	0.00	
	No.	25.40	25.40	0.00	
Waste Management	FTE	25.40	25.40	0.00	
	No.	6.00	6.00	0.00	
Executive Operations	FTE	6.00	6.00	0.00	
	No.	0.29	0.29	0.00	
Fire Control	FTE	0.29	0.29	0.00	
Net Total	FTE	283.63	288.37	4.74	Overall change in FTE

Area	#	14/15	15/16	16/17	Diff	Summary of Changes
	No.	9.00	9.00	9.00	0.00	
Executive Management	FTE	9.00	9.00	9.00	0.00	
	No.	6.20	6.46	6.46	0.00	
Risk Management	FTE	6.20	6.46	6.46	0.00	
	No.	3.00	3.00	3.00	0.00	
Communication and Events	FTE	3.00	3.00	3.00	0.00	
	No.	1.77	1.77	2.00	0.23	HR Manager and Coordinator roles reinstated to FT (0.23 FTE)
Human Resources	FTE	1.77	1.77	2.00	0.23	
	No.	4.40	4.40	4.40	0.00	
Community Partnerships	FTE	4.40	4.40	4.40	0.00	
	No.	18.03	17.91	17.91	0.00	
Customer Service	FTE	18.03	17.91	17.91	0.00	
	No.	15.00	15.00	15.00	0.00	
Corporate Governance	FTE	15.00	15.00	15.00	0.00	
	No.	3.00	3.00	3.00	0.00	
Property Services	FTE	3.00	3.00	3.00	0.00	
	No.	24.87	25.07	24.47	-0.60	Grant Funded position ceased - Education and Public Programs Officer (-0.6 FTE)
Cultural Services	FTE	24.87	25.07	24.47	-0.60	
	No.	23.20	23.60	23.60	0.00	
Finance	FTE	23.20	23.60	23.60	0.00	
	No.	11.00	11.00	11.00	0.00	
Information Services	FTE	11.00	11.00	11.00	0.00	
	No.	30.04	30.04	30.04	0.00	
Environment & Regulatory Services	FTE	30.04	30.04	30.04	0.00	
	No.	12.83	15.83	14.91	-0.92	Senior Subdivision and Development Engineer position not replaced or included in budget (-0.91 FTE)
Development Services	FTE	12.83	15.83	14.91	-0.92	
	No.	6.00	7.00	7.40	0.40	Better Waste Program Officer - 12 month fixed term position funded by Better Waste Grant (0.40 FTE)
Strategic Planning	FTE	6.00	7.00	7.40	0.40	
	No.	1.00	1.00	1.00	0.00	
City Design & Economic Development	FTE	1.00	1.00	1.00	0.00	
	No.	10.00	10.00	10.00	0.00	
Building Services	FTE	10.00	10.00	10.00	0.00	
	No.	36.00	36.00	38.00	2.00	Introduction of the City Cleaning Program (2.0 FTE)
Construction & Maintenance	FTE	36.00	36.00	38.00	2.00	
	No.	9.00	9.00	9.00	0.00	
Design & Mapping	FTE	9.00	9.00	9.00	0.00	

Area	#	14/15	15/16	16/17	Diff	Summary of Changes
	No.	27.60	27.60	27.60	0.00	
Parks & Recreation	FTE	27.60	27.60	27.60	0.00	
	No.	25.40	25.40	25.40	0.00	
Waste Management	FTE	25.40	25.40	25.40	0.00	
	No.	6.00	6.00	6.00	0.00	
Executive Operations	FTE	6.00	6.00	6.00	0.00	
	No.	0.29	0.29	0.29	0.00	
Fire Control	FTE	0.29	0.29	0.29	0.00	
Net Total	FTE	283.63	288.37	289.48	1.11	Overall change in FTE

Area	#	14/15	15/16	16/17	17/18	Diff	Summary of Changes
	No.	9.00	9.00	9.00	9.00	0.00	
Executive Management	FTE	9.00	9.00	9.00	9.00	0.00	
	No.	6.20	6.46	6.46	6.46	0.00	
Risk Management	FTE	6.20	6.46	6.46	6.46	0.00	
	No.	3.00	3.00	3.00	4.00	1.00	New position - Digital & Community Engagement Coordinator (1.0 FTE)
Communication and Events	FTE	3.00	3.00	3.00	4.00	1.00	
	No.	1.77	1.77	2.00	2.00	0.00	
Human Resources	FTE	1.77	1.77	2.00	2.00	0.00	
	No.	4.40	4.40	4.40	4.40	0.00	
Community Partnerships	FTE	4.40	4.40	4.40	4.40	0.00	
	No.	18.03	17.91	17.91	17.31	-0.60	Branch review - Reduction of hours across the department from 627 hours to 606 hours (-0.60 FTE)
Customer Service	FTE	18.03	17.91	17.91	17.31	-0.60	
	No.	15.00	15.00	15.00	15.00	0.00	
Corporate Governance	FTE	15.00	15.00	15.00	15.00	0.00	
	No.	3.00	3.00	3.00	3.00	0.00	
Property Services	FTE	3.00	3.00	3.00	3.00	0.00	
	No.	24.87	25.07	24.47	24.47	0.00	
Cultural Services	FTE	24.87	25.07	24.47	24.47	0.00	
	No.	23.20	23.60	23.60	23.60	0.00	
Finance	FTE	23.20	23.60	23.60	23.60	0.00	
	No.	11.00	11.00	11.00	11.00	0.00	
Information Services	FTE	11.00	11.00	11.00	11.00	0.00	
	No.	30.04	30.04	30.04	30.04	0.00	
Environment & Regulatory Services	FTE	30.04	30.04	30.04	30.04	0.00	
	No.	12.83	15.83	14.91	16.91	2.00	New position - Town Planner (1.0 FTE) New position - Development Services Support Officer (1.0 FTE)
Development Services	FTE	12.83	15.83	14.91	16.91	2.00	
	No.	6.00	7.00	7.40	7.40	0.00	
Strategic Planning	FTE	6.00	7.00	7.40	7.40	0.00	
	No.	1.00	1.00	1.00	1.00	0.00	
City Design & Economic Development	FTE	1.00	1.00	1.00	1.00	0.00	
	No.	10.00	10.00	10.00	10.00	0.00	
Building Services	FTE	10.00	10.00	10.00	10.00	0.00	
	No.	36.00	36.00	38.00	38.00	0.00	
Construction & Maintenance	FTE	36.00	36.00	38.00	38.00	0.00	
	No.	9.00	9.00	9.00	9.00	0.00	
Design & Mapping	FTE	9.00	9.00	9.00	9.00	0.00	

Area	#	14/15	15/16	16/17	17/18	Diff	Summary of Changes
	No.	27.60	27.60	27.60	28.00	0.40	New position - Temporary Parks Planner - 14 hours per week (0.40 FTE)
Parks & Recreation	FTE	27.60	27.60	27.60	28.00	0.40	
	No.	25.40	25.40	25.40	25.43	0.03	Change in the structure of the Gatehouse Attendants and how they are budgeted for - variation to the roster to cover 50 hours per week, being an increase on 2016/17 by 1.16 hours (0.03 FTE)
Waste Management	FTE	25.40	25.40	25.40	25.43	0.03	
	No.	6.00	6.00	6.00	6.00	0.00	
Executive Operations	FTE	6.00	6.00	6.00	6.00	0.00	
	No.	0.29	0.29	0.29	0.29	0.00	
Fire Control	FTE	0.29	0.29	0.29	0.29	0.00	
Net Total	FTE	283.63	288.37	289.48	292.31	2.83	Overall change in FTE

Area	#	14/15	15/16	16/17	17/18	18/19	Diff	
	No.	9.00	9.00	9.00	9.00	9.00	0.00	
Executive Management	FTE	9.00	9.00	9.00	9.00	9.00	0.00	
	No.	6.20	6.46	6.46	6.46	5.46	-1.00	Reduced FTE of Risk Manager (-0.50 FTE) and Insurance Risk Officer (-0.50 FTE)
Risk Management	FTE	6.20	6.46	6.46	6.46	5.46	-1.00	
	No.	3.00	3.00	3.00	4.00	4.00	0.00	
Communication and Events	FTE	3.00	3.00	3.00	4.00	4.00	0.00	
	No.	1.77	1.77	2.00	2.00	2.60	0.60	New position - Administration Officer (0.60 FTE)
Human Resources	FTE	1.77	1.77	2.00	2.00	2.60	0.60	
	No.	4.40	4.40	4.40	4.40	4.40	0.00	
Community Partnerships	FTE	4.40	4.40	4.40	4.40	4.40	0.00	
	No.	18.03	17.91	17.91	17.31	17.31	0.00	
Customer Service	FTE	18.03	17.91	17.91	17.31	17.31	0.00	
	No.	15.00	15.00	15.00	15.00	14.00	-1.00	Vacant Internal Auditor position not budgeted for in 2018/2019 (-1.0 FTE)
Corporate Governance	FTE	15.00	15.00	15.00	15.00	14.00	-1.00	
	No.	3.00	3.00	3.00	3.00	3.00	0.00	
Property Services	FTE	3.00	3.00	3.00	3.00	3.00	0.00	
	No.	24.87	25.07	24.47	24.47	24.47	0.00	
Cultural Services	FTE	24.87	25.07	24.47	24.47	24.47	0.00	
	No.	23.20	23.60	23.60	23.60	23.60	0.00	
Finance	FTE	23.20	23.60	23.60	23.60	23.60	0.00	
	No.	11.00	11.00	11.00	11.00	11.00	0.00	
Information Services	FTE	11.00	11.00	11.00	11.00	11.00	0.00	
	No.	30.04	30.04	30.04	30.04	30.04	0.00	
Environment & Regulatory Services	FTE	30.04	30.04	30.04	30.04	30.04	0.00	
	No.	12.83	15.83	14.91	16.91	16.00	-0.91	Vacant Part time Senior Subdivision & Development Engineer not budgeted for in 2018/2019 (-0.91 FTE)
Development Services	FTE	12.83	15.83	14.91	16.91	16.00	-0.91	
	No.	6.00	7.00	7.40	7.40	7.00	-0.40	Better Waste Program Officer - 12 month fixed term position funded by Better Waste Grant not budgeted for in 2018/2019 (-0.40 FTE)
Strategic Planning	FTE	6.00	7.00	7.40	7.40	7.00	-0.40	
	No.	1.00	1.00	1.00	1.00	1.00	0.00	
City Design & Economic Development	FTE	1.00	1.00	1.00	1.00	1.00	0.00	
	No.	10.00	10.00	10.00	10.00	10.00	0.00	
Building Services	FTE	10.00	10.00	10.00	10.00	10.00	0.00	
	No.	36.00	36.00	38.00	38.00	38.33	0.33	WH&S Work Safety Officer position is disbursed across a number of departments within the organisation. This movement in FTE is a reflection of this - 1.0 FTE was previously accounted for in Parks - there is no change to the FTE of the position overall (0.33 FTE)
Construction & Maintenance	FTE	36.00	36.00	38.00	38.00	38.33	0.33	
	No.	9.00	9.00	9.00	9.00	9.00	0.00	
Design & Mapping	FTE	9.00	9.00	9.00	9.00	9.00	0.00	

Area	#	14/15	15/16	16/17	17/18	18/19	Diff	
	No.	27.60	27.60	27.60	28.00	27.33	-0.67	WH&S Work Safety Officer position is disbursed across a number of departments within the organisation. This movement in FTE is a reflection of this - 1.0 FTE was previously accounted for in Parks - position across 2 other departments - there is no change to the FTE of the position overall (-0.67 FTE)
Parks & Recreation	FTE	27.60	27.60	27.60	28.00	27.33	-0.67	
	No.	25.40	25.40	25.40	25.43	25.23	-0.20	WH&S Work Safety Officer position is disbursed across a number of departments within the organisation. This movement in FTE is a reflection of this - 1.0 FTE was previously accounted for in Parks - there is no change to the FTE of the position overall (0.34 FTE) Review of structure conducted: New position - Administration Assistant - 16 hours per week (0.46 FTE)
Waste Management	FTE	25.40	25.40	25.40	25.43	25.23	-0.20	
	No.	6.00	6.00	6.00	6.00	6.00	0.00	
Executive Operations	FTE	6.00	6.00	6.00	6.00	6.00	0.00	
	No.	0.29	0.29	0.29	0.29	0.29	0.00	
Fire Control	FTE	0.29	0.29	0.29	0.29	0.29	0.00	
Net Total	FTE	283.63	288.37	289.48	292.31	289.06	-3.25	Overall change in FTE

Area	#	14/15	15/16	16/17	17/18	18/19	19/20	Diff	Summary of Changes
	No.	9.00	9.00	9.00	9.00	9.00	11.00	2.00	New position - Corporate Planning and Performance Strategist (1.0 FTE) New position - Business Improvement Specialist (1.0 FTE)
Executive Management	FTE	9.00	9.00	9.00	9.00	9.00	11.00	2.00	
	No.	6.20	6.46	6.46	6.46	5.46	5.46	0.00	
Risk Management	FTE	6.20	6.46	6.46	6.46	5.46	5.46	0.00	
	No.	3.00	3.00	3.00	4.00	4.00	8.31	4.31	VIC transferred to Corp Comms after restructure (2.31 FTE) New position - Events Officer (1.0 FTE) New position - Marketing and Branding Coordinator (1.0 FTE)
Communication and Events	FTE	3.00	3.00	3.00	4.00	4.00	8.31	4.31	
	No.	1.77	1.77	2.00	2.00	2.60	3.60	1.00	New position - Senior People and Development Advisor (1.0 FTE)
Human Resources	FTE	1.77	1.77	2.00	2.00	2.60	3.60	1.00	
	No.	4.40	4.40	4.40	4.40	4.40	5.20	0.80	New position - Program Support Worker - Community Services (0.8 FTE)
Community Partnerships	FTE	4.40	4.40	4.40	4.40	4.40	5.20	0.80	
	No.	18.03	17.91	17.91	17.31	17.31	17.31	0.00	
Customer Service	FTE	18.03	17.91	17.91	17.31	17.31	17.31	0.00	
	No.	15.00	15.00	15.00	15.00	14.00	15.20	1.20	New positions - Committee Clerks (1.2 FTE)
Corporate Governance	FTE	15.00	15.00	15.00	15.00	14.00	15.20	1.20	
	No.	3.00	3.00	3.00	3.00	3.00	4.00	1.00	New position - Manager Property & Strategy (1.0 FTE)
Property Services	FTE	3.00	3.00	3.00	3.00	3.00	4.00	1.00	
	No.	24.87	25.07	24.47	24.47	24.47	22.06	-2.41	VIC staff transferred to Corporate Communications (-2.31 FTE) Decrease in overall Library hours of 3.49 hours (-.10 FTE)
Cultural Services	FTE	24.87	24.47	24.47	24.47	24.47	22.06	-2.41	
	No.	23.20	23.60	23.60	23.60	23.60	21.20	-2.40	Transfer of Depot Stores & Admin staff to Executive Operations (-2.4 FTE)
Finance	FTE	23.20	23.60	23.60	23.60	23.60	21.20	-2.40	
	No.	11.00	11.00	11.00	11.00	11.00	12.40	1.40	New position - IT Business Support Analyst (1.0 FTE) New position - IT Reporting & Database Specialist (0.4 FTE) - previously casual
Information Services	FTE	11.00	11.00	11.00	11.00	11.00	12.40	1.40	
	No.	30.04	30.04	30.04	30.04	30.04	31.04	1.00	Change in Manager disbursement % from S.135 to S.881 (-0.50 FTE) New position - Compliance Coordinator (1.0 FTE) New position - Compliance Investigation Specialist (1.0 FTE) Compliance Officers transferred from S.137 to S.149 (-2.0 FTE) New position - Coordinator Community Enforcement (1.0 FTE) Change in Manager disbursement % to S.881 from S.135 (0.50 FTE)
Environment & Regulatory Services	FTE	30.04	30.04	30.04	30.04	30.04	31.04	1.00	
	No.	12.83	15.83	14.91	16.91	16.00	18.00	2.00	New position - Coordinator Development Engineering (1.0 FTE)
Development Services	FTE	12.83	15.83	14.91	16.91	16.00	18.00	2.00	
	No.	6.00	7.00	7.40	7.40	7.00	10.00	3.00	New position - Strategic Planner - Heritage and Urban Design (1.0 FTE) New position - Strategic Planner - Development Contributions (1.0 FTE) New position - Environmental Sustainabilty Coordinator (1.0 FTE) New position - Coordinator Transport Planner (1.0 FTE) Transfer of Placemaking Coordinator to City Design S.140 (-1.0 FTE)
Strategic Planning	FTE	6.00	7.00	7.40	7.40	7.00	10.00	3.00	

Area	#	14/15	15/16	16/17	17/18	18/19	19/20	Diff	Summary of Changes
	No.	1.00	1.00	1.00	1.00	1.00	2.60	1.60	City Design & Economic Development Manager - replaces vacant Strategic Planning Executive (no change to FTE) Transfer of Placemaking Coordinator from Strategic Planning S.143 (1.0 FTE) New position - Urban Design Planner (0.6 FTE)
City Design & Economic Development	FTE	1.00	1.00	1.00	1.00	1.00	2.60	1.60	
	No.	10.00	10.00	10.00	10.00	10.00	10.60	0.60	New position - Building Services Support Officer - Fixed Term 2 years (0.60 FTE)
Building Services	FTE	10.00	10.00	10.00	10.00	10.00	10.60	0.60	
	No.	36.00	36.00	38.00	38.00	38.33	40.00	1.67	New positions - Project Engineer (2.0 FTE) WHS Works Safety Officer FTE count moved to Executive Operations (-0.33 FTE)
Construction & Maintenance	FTE	36.00	36.00	38.00	38.00	38.33	40.00	1.67	
	No.	9.00	9.00	9.00	9.00	9.00	10.00	1.00	New position - Asset Management Coordinator (1.0 FTE)
Design & Mapping	FTE	9.00	9.00	9.00	9.00	9.00	10.00	1.00	
	No.	27.60	27.60	27.60	28.00	27.33	31.00	3.67	New position Project Manager (1.0 FTE) New position - Operational Supervisor - Parks (1.0 FTE) - new crew New positionsIntermediate Plant Operators - Parks (2.0 FTE) - new crew WHS Works Safety Officer FTE count moved to Executive Operations (-0.33 FTE)
Parks & Recreation	FTE	27.60	27.60	27.60	28.00	27.33	31.00	3.67	
	No.	25.40	25.40	25.40	25.43	25.23	26.23	1.00	New position - Operator in Charge - Sewer Pump Stations (1.0 FTE)
Waste Management	FTE	25.40	25.40	25.40	25.43	25.23	26.23	1.00	
	No.	6.00	6.00	6.00	6.00	6.00	10.06	4.06	Transfer of Depot Stores & Admin staff from Finance (2.4) New position - Executive Manager Operations (1.0) WHS Works Safety Officer FTE count moved from Parks and Construction (0.66 FTE)
Executive Operations	FTE	6.00	6.00	6.00	6.00	6.00	10.06	4.06	
	No.	0.29	0.29	0.29	0.29	0.29	0.29	0.00	
Fire Control	FTE	0.29	0.29	0.29	0.29	0.29	0.29	0.00	
Net Total	FTE	283.63	288.37	289.48	292.31	289.06	315.56	26.50	Overall change in FTE

Appendix 1 – Comparison of Full Time Equivalent staff and other information between per-urban councils

14/15	Classification	Size of LGA Km2	Population	Full Time Equivalent Staff (FTE)	Population per FTE	Budget Employee Costs	Budget Operating Expenses	% Budget Employee Costs Budget of Budget operating Expenses	Actual Employee Costs \$000's	Actual Salaries & Wages only \$000's	Operating Expenses \$000's	% Employee Costs of OE	% Salaries & Wages of OE
Blue Mountains	Metropolitan Fringe	1,431	79,688	512	156	46,023	99,986	46%	\$ 46,340	\$ 36,157	\$ 101,660	46%	36%
Camden	Metropolitan Fringe	201	67,084	342	196	32,568	74,880	43%	\$ 31,098	\$ 23,259	\$ 78,459	40%	30%
Wollondilly	Metropolitan Fringe	2,556	47,084	221	213	18,753	50,246	37%	\$ 19,412	\$ 17,452	\$ 55,546	35%	31%
Wingecarrabie	Regional Town / City	2,688	47,584	367	130	29,431	91,746	32%	\$ 31,629	\$ 24,255	\$ 91,634	35%	26%
Penrith	Metropolitan Fringe	405	194,134	1,056	184	87,597	190,915	46%	\$ 83,430	\$ 63,582	\$ 183,543	45%	35%
The Hills	Metropolitan Fringe	401	187,703	540	348	52,191	131,184	40%	\$ 49,584	\$ 41,295	\$ 130,606	38%	32%
Hawkesbury	Metropolitan Fringe	2,775	65,527	288	228	24,332	68,723	35%	\$ 24,247	\$ 18,797	\$ 68,827	35%	27%

15/16		Size of LGA Km2	Population	Full Time Equivalent Staff (FTE)	Population per FTE	Budget Employee Costs	Budget Operating Expenses	% Budget Employee Costs Budget of Budget operating Expenses	Actual Employee Costs \$000's	Actual Salaries & Wages only \$000's	Operating Expenses \$000's	% Employee Costs of OE	% Salaries & Wages of OE
Blue Mountains	Metropolitan Fringe	1,431	79,812	524	152	47,456	102,262	46%	\$ 46,935	\$ 38,170	\$ 105,259	45%	36%
Camden	Metropolitan Fringe	201	72,256	347	208	36,225	76,136	48%	\$ 35,318	\$ 26,297	\$ 83,377	42%	32%
Wollondilly	Metropolitan Fringe	2,556	47,997	216	222	20,250	52,184	39%	\$ 20,609	\$ 18,275	\$ 54,304	38%	34%
Wingecarrabie	Regional Town / City	2,688	48,028	370	130	31,438	91853	34%	\$ 32,103	\$ 26,438	\$ 97,117	33%	27%
Penrith	Metropolitan Fringe	405	197,922	1,064	186	90,197	195,311	46%	\$ 89,378	\$ 66,223	\$ 200,038	45%	33%
The Hills	Metropolitan Fringe	401	192,230	532	361	53,217	136,568	39%	\$ 52,025	\$ 42,891	\$ 132,743	39%	32%
Hawkesbury	Metropolitan Fringe	2,775	66,134	272	243	25,245	70,722	36%	\$ 26,492	\$ 19,106	\$ 79,814	33%	24%

16/17		Size of LGA Km2	Population	Full Time Equivalent Staff (FTE)	Population per FTE	Budget Employee Costs	Budget Operating Expenses	% Budget Employee Costs Budget of Budget operating Expenses	Actual Employee Costs \$000's	Actual Salaries & Wages only \$000's	Operating Expenses \$000's	% Employee Costs of OE	% Salaries & Wages of OE
Blue Mountains	Metropolitan Fringe	1,431	78,705	520	151	50,806	108,412	47%	\$ 49,920	\$ 40,275	\$ 110,518	45%	36%
Camden	Metropolitan Fringe	201	80,476	387	208	40,835	87,224	47%	\$ 38,831	\$ 29,035	\$ 92,030	42%	32%
Wollondilly	Metropolitan Fringe	2,556	49,742	233	213	21,308	52,289	41%	\$ 20,433	\$ 19,139	\$ 55,609	37%	34%
Wingecarrabie	Regional Town / City	2,688	49,070	378	130	33,829	93,568	36%	\$ 32,342	\$ 26,260	\$ 102,730	31%	26%
Penrith	Metropolitan Fringe	405	201,400	988	204	93,024	209,100	44%	\$ 89,267	\$ 68,212	\$ 207,114	43%	33%
The Hills	Metropolitan Fringe	386	162,539	512	317	55,956	141,558	40%	\$ 51,300	\$ 42,472	\$ 130,154	39%	33%
Hawkesbury	Metropolitan Fringe	2,775	66,136	293	226	26,340	73,815	36%	\$ 26,092	\$ 19,431	\$ 76,285	34%	25%

17/18		Size of LGA Km2	Population	Full Time Equivalent Staff (FTE)	Population per FTE	Budget Employee Costs	Budget Operating Expenses	% Budget Employee Costs Budget of Budget operating Expenses	Actual Employee Costs \$000's	Actual Salaries & Wages only \$000's	Operating Expenses \$000's	% Employee Costs of OE	% Salaries & Wages of OE
Blue Mountains	Metropolitan Fringe	1,431	78,968	549	144	52,348	109,467	48%	\$ 52,274	\$ 42,352	\$ 120,295	43%	35%
Camden	Metropolitan Fringe	201	87,068	425	205	44,440	96,266	46%	\$ 42,072	\$ 33,266	\$ 109,689	38%	30%
Wollondilly	Metropolitan Fringe	2,556	51,002	241	212	22,642	56,622	40%	\$ 20,796	\$ 19,999	\$ 72,578	29%	28%
Wingecarrabie	Regional Town / City	2,688	49,649	430	115	36,252	99,717	36%	\$ 33,379	\$ 27,459	\$ 104,487	32%	26%
Penrith	Metropolitan Fringe	405	205,043	1,031	199	98,037	226,346	43%	\$ 93,177	\$ 72,375	\$ 206,069	45%	35%
The Hills	Metropolitan Fringe	386	167,847	519	323	55,265	133,123	42%	\$ 51,248	\$ 42,963	\$ 145,090	35%	30%
Hawkesbury	Metropolitan Fringe	2,775	66,623	272	245	26,879	75,076	36%	\$ 26,798	\$ 19,730	\$ 76,217	35%	26%

18/19		Size of LGA Km2	Population	Full Time Equivalent Staff (FTE)	Population per FTE	Budget Employee Costs	Budget Operating Expenses	% Budget Employee Costs Budget of Budget operating Expenses	Actual Employee Costs \$000's	Actual Salaries & Wages only \$000's	Operating Expenses \$000's	% Employee Costs of OE	% Salaries & Wages of OE
Blue Mountains	Metropolitan Fringe	1,431	79,118	537	147	57,755	116,680	49%	\$ 57,410	\$ 44,454	\$ 125,103	46%	36%
Camden	Metropolitan Fringe	201	95,252	450	212	47,147	102,624	46%	\$ 48,878	\$ 36,559	\$ 124,608	39%	29%
Wollondilly	Metropolitan Fringe	2,556	53,149	247	215	24,279	59,551	41%	\$ 23,772	\$ 21,380	\$ 60,516	39%	35%
Wingecarrabie	Regional Town / City	2,688	51,134	472	108	37,288	103,288	36%	\$ 35,998	\$ 29,460	\$ 112,148	32%	26%
Penrith	Metropolitan Fringe	405	212,977	1,067	200	102,245	240,744	42%	\$ 101,258	\$ 77,614	\$ 233,460	43%	33%
The Hills	Metropolitan Fringe	386	177,969	518	344	57,076	137,326	42%	\$ 54,026	\$ 44,413	\$ 150,100	36%	30%
Hawkesbury	Metropolitan Fringe	2,775	67,296	279	241	28,431	79,987	36%	\$ 28,949	\$ 20,896	\$ 79,340	36%	26%

19/20		Size of LGA Km2	Population	Full Time Equivalent Staff (FTE)	Population per FTE	Budget Employee Costs	Budget Operating Expenses	% Budget Employee Costs Budget of Budget operating Expenses	Actual Employee Costs \$000's	Actual Salaries & Wages only \$000's	Operating Expenses \$000's	% Employee Costs of OE	% Salaries & Wages of OE
Blue Mountains	Metropolitan Fringe	1,431	79,118	537	147	59,904	121,237	49%	N/A	N/A	N/A	N/A	N/A
Camden	Metropolitan Fringe	201	104,206	450	232	49,720	113,439	44%	N/A	N/A	N/A	N/A	N/A
Wollondilly	Metropolitan Fringe	2,556	53,149	247	215	26,934	63,332	43%	N/A	N/A	N/A	N/A	N/A
Wingecarrabie	Regional Town / City	2,688	51,134	472	108	39,951	110,147	36%	N/A	N/A	N/A	N/A	N/A
Penrith	Metropolitan Fringe	405	212,977	1,067	200	112,612	258,792	44%	N/A	N/A	N/A	N/A	N/A
The Hills	Metropolitan Fringe	386	177,969	518	344	59,162	148,117	40%	N/A	N/A	N/A	N/A	N/A
Hawkesbury	Metropolitan Fringe	2,775	67,296	279	241	30,378	82,577	37%	N/A	N/A	N/A	N/A	N/A

Camden Population 18/19 and 19/20 estimated at an annual growth rate of 9.4% as per Camden's website

Blue Mountains, Wollondilly, Wingecarrabie, Penrith, Hills Hawkesbury population 18/19 obtained from Profile id, 1920 maintained the same as data not published yet

FTE's - do not include vacancies

Note : Wollondilly - Operating expenditure dropped \$12M from 17/18 to 18/19 (\$7M drop in Deprecitaion, \$4M drop in Materials & contracts

2019/2020 FTE's Budgets not available, so kept the same as 2018/2019.

Appendix 2 - Comparison of functions provided by peri-urban councils

	Domestic Waste - Red Bin	Domestic Waste - Recycling	Domestic Waste - Organics	Other	Sewer	Water	Landfill
Blue Mountains Council	Staff	Contract	Contract	Bulky Waste Staff	no	no	yes
Penrith Council	Contract	Contract	Contract	Bulky Waste Contract	no	no	no
Camden Council	Staff	Staff	Staff	Bulky Waste Staff	no	no	no
Hills Council	Contract	Contract	Contract	Bulky Waste Contract	no	no	no
Wollondilly Council	Contract	Contract	Contract	Contract	no	no	yes
Wingecarribee Council	Contract	Contract	Contract	Contract	yes	yes	Transfer station
Hawkesbury Council	Staff	Contract	Contract	Bulky Waste Contract	yes (part area only)	yes (recycled part area only)	yes

AT 2 – Detailed Consultants Expenditure

Consultancies for 2014/2015								
Branch	Consultant	Matter	Legislation	Operational Plan	Council Resolution	Other	Amount	Funding Source
Building Services	Australian Technology Corporation	Design Services – BSS Network		2014/2015 Action 8.1			\$ 7,500	Reserve & General Fund
Building Services	Floth Sustainable Building Consultants	DA, CC & tender documentation for Richmond Seniors Centre		2013/2014 Capital Works			\$ 5,633	Reserve Fund
Building Services	Justin Long Design	As-Built Plans Dight Street Offices			Resolution 349 29/10/2013 Resolution 48 - 25/02/2014		\$ 570	Reserve Fund
Building Services	Justin Long Design	Design and Documentation Richmond Seniors Centre Upgrade		2013/2014 Capital Works			\$ 9,695	Reserve Fund
Building Services	R & M Brown Consultancy	Condition Audits of Council Properties		2014/2015 Action 8.1			\$ 21,165	General Fund
Building Services	Taylor Lauder Bersten Pty Ltd	Engineering Services Richmond Seniors Centre Upgrade		2013/2014 Capital Works			\$ 1,740	Reserve Fund
Construction & Maintenance	SMEC Australia	Pavement Management Database Review & Analysis		2014/2015 Action 46.1			\$ 12,000	General Fund
Corporate Services & Governance	G J McDonald Consulting Engineers	Inspection and certificate for proposed subdivision Lot 11, Sec 4 DP759096 South Windsor			Resolution 42 - 13/02/2007		\$ 1,260	General Fund
Corporate Services & Governance	Geotechnique	Site Fill Testing - 6 Ham Street Stn Windsor			Resolution 42 - 13/02/2007		\$ 1,850	Reserve Fund
Corporate Services & Governance	KD Wood Valuations (Aust) Pty Ltd	Valuation Services for Council owned properties		2014/2015 Action 45.4			\$ 28,545	General Fund
Corporate Services & Governance	Lunney Watt & Associates Pty Ltd	Rental negotiation Letter of Update Johnson Wing		2014/2015 Action 45.4	Resolution 227 - 11/07/2017		\$ 700	General Fund
Corporate Services & Governance	Lunney Watt & Associates Pty Ltd	Report on Impact of Proposed Easement Musson Lane Richmond		2014/2015 Action 45.4			\$ 600	General Fund
Development Services	Allstadt	Heritage Advisory Services		2014/2015 No specific Action		Operational Activity	\$ 2,328	Grant and General Fund
Development Services	Barker Ryan Stewart	Provision of Development Engineering Services		2014/2015 No specific Action		Operational Activity	\$ 14,952	Reserve Fund
Development Services	Bewsher Consulting	Planning Appeal - HCC v Urban City Consulting LEC 10872/13-466 Wilberforce Rd		2014/2015 No specific Action		Operational Activity	\$ 33,105	General Fund
Development Services	OCP Architects	Heritage Advisory Services		2014/2015 No specific Action		Operational Activity	\$ 15,232	Grant and General Fund
Development Services	SGS Economics and Planning Pty Ltd	Economic assessment - Proposed Cinema Development		2014/2015 No specific Action		Operational Activity	\$ 12,750	General Fund
Development Services	Timothy William Architect	Independent Assessment – Cinema, Mulgrave JRPP		2014/2015 No specific Action		Operational Activity	\$ 2,000	General Fund
Financial Services	Spectra Financial Services	Investment Advisory Services	Office of Local Government				\$ 8,000	General Fund
Information Services	Assetic Australia	Implementation of Asset Management System		2014/2015 Action 8.6			\$ 19,093	General Fund
Information Services	Computer Systems Australia	IT Consultancy services		2014/2015 Action 51.5			\$ 93,998	General Fund
Information Services	Technology One	IT Consultancy services		2014/2015 Action 51.5			\$ 27,646	General Fund
Parks & Recreation	Barnson Pty Ltd	Geotechnical investigation & reporting St Albans Cemetery		2013/2014 No specific Action		Operational Activity	\$ 8,400	General Fund
Parks & Recreation	Environmental Partnership	McQuade Park Plan of Management		2014/2015 Capital Works			\$ 4,000	Grant and General Fund
Parks & Recreation	The Playground Doctor P/L	Playground Inspections and safety surfacing		2014/2015 No specific Action		Operational Activity	\$ 10,240	General Fund
Risk Management	David Braunstein Consulting	Design & Development Training & documentation		2014/2015 Action 52.3			\$ 6,800	General Fund
Risk Management	David G Hart Consulting Pty Ltd	Preparation of Report Workers Compensation Claim Liabilities	State Insurance Regulatory Authority				\$ 6,500	General Fund
Risk Management	OHS Services Australia	Preparation for WHS Audit		2014/2015 Action 52.3			\$ 9,544	General Fund
Risk Management	OHS Services Australia	Racking Compliance Audit		2014/2015 Action 52.3			\$ 7,954	General Fund
Risk Management	OHS Services Australia	WHS Professional Services		2014/2015 Action 52.3			\$ 103,665	General Fund
Risk Management	Workplace Navigation Pty Ltd	Workers Compensation Management Services		2014/2015 Action 52.3			\$ 26,100	General Fund
Strategic Planning	BMT WBM Pty Ltd	Estuary Management Plan and Study		2014/2015 Action 15.6	Resolution 389 - 11/10/2011, Resolution 434 - 29/11/2011		\$ 22,686	Reserve and Grant Fund
Strategic Planning	Graham Edds and Associates	Preparation of Heritage Inventory Sheets		2014/2015 Action 7.2			\$ 9,840	Grant and General Fund
Strategic Planning	The Trustee for GLN Planning Unit Trust	Section 94/94a Contributions Plan		2014/2015 Action 45.5			\$ 13,300	Reserve Fund
Strategic Planning	Vital Places Pty Ltd	Big Ideas Workshops - Feasibility Action Plan		2014/2015 Action 2.1			\$ 41,250	General Fund
Strategic Planning	Vital Places Pty Ltd	North Richmond Town Centre Workshop		2014/2015 Action 2.1			\$ 6,280	General Fund
Strategic Planning	Worley Parsons Services Pty Ltd	Stormwater Management Plan for Pitt Town			Resolution 354 - 08/12/2015	Review of Pitt Town Stormwater Management	\$ 18,000	General Fund
Waste Management	AAM Pty Ltd	Environmental monitoring - Waste Management Facility	Environment Protection Authority				\$ 27,300	Reserve Fund
Waste Management	Consulting Earth Scientists	Environmental monitoring - Waste Management Facility	Environment Protection Authority				\$ 67,299	Reserve Fund
Waste Management	GHD Pty Ltd	Landfill Licencing Risk Assessment		2014/2015 Action 23.3			\$ 4,804	Reserve Fund
Waste Management	Golder Associates	Testing of Mulch - Waste Management Facility	Environment Protection Authority				\$ 7,546	Reserve Fund
Waste Management	KPMG	Sewerage Scheme Business Review		2014/2015 Action 45.2			\$ 14,739	Reserve Fund
Waste Management	SLR Consulting Australia Pty Ltd	Acoustic services regarding noise complaint South Windsor STP	Environment Protection Authority				\$ 8,320	Reserve Fund
Total Consultancies for 2014/2015							\$ 744,929	
Consultancies for 2015/2016								
Branch	Consultant	Matter	Legislation	Operational Plan	Council Resolution	Other	Amount	Funding Source
Waste Management	AAM Pty Ltd	Aerial Survey - Waste Management Facility	Environment Protection Authority				\$ 12,000	Reserve Fund
Development Services	Allstadt	Heritage Advisory Services		2015/2016 No specific Action		Operational Activity	\$ 5,035	General & Grant Fund
Construction & Maintenance	Assetic Australia	Asset Management – Roads Assets Advice		2015/2016 Action 46.1			\$ 10,000	General Fund
Waste Management	AVMAP - Aerial	Topographical and volumetric survey HCWMF	Environment Protection Authority				\$ 5,700	Reserve Fund
Information Services	Civica Pty Ltd	IT Consultancy Services		2015/2016 Action 51.5			\$ 1,010	General Fund
Parks & Recreation	Clouston Associates	Hawkesbury Sports Strategy		2015/2016 Action 50.6			\$ 2,000	General Fund
Information Services	Computer Systems Australia	IT Consultancy Services		2015/2016 Action 51.5			\$ 57,415	General Fund
Waste Management	Consulting Earth Scientists	WMF monthly and quarterly environmental monitoring & Annual Report & Return	Environment Protection Authority				\$ 26,597	Reserve Fund
Risk Management	David G Hart Consulting Pty Ltd	Workers Compensation Claim Liabilities	State Insurance Regulatory Authority				\$ 10,500	General Fund
Waste Management	Environmental Earth Sciences (NSW)	HCWMF monthly and quarterly environmental monitoring	Environment Protection Authority				\$ 31,293	Reserve Fund
Building Services	Floth Sustainable Building Consultants	Mechanical, Electrical and Hydraulic Services for Richmond Seniors Centre Upgrade		2013/2014 Capital Works			\$ 2,000	Reserve Fund
Strategic Planning	GLN Planning	Preparation of Draft S94 & S94a Contribution Plans		2015/2016 Action 45.4			\$ 2,660	Reserve Fund
Strategic Planning	Graham Edds and Associates	Preparation of Heritage Inventory Sheets		2014/2015 Action 7.2			\$ 6,560	General & Grant Fund
Parks & Recreation	International Conservation Services Pty Ltd	Condition Assessment and conservation advice for the Krupp Field Gun restoration			Resolution 233 - 25/08/2015		\$ 1,450	General Fund
Executive Management	Jeff Roorda and Associates Pty Ltd	Review of Asset Revaluations Methodology and Advice		2015/2016 Action 52.2			\$ 11,440	General Fund
Building Services	Justin Long Design	Master Plan for the upgrade of the North Richmond Community Precinct		2015/2016 Capital Works			\$ 2,500	Reserve Fund
Building Services	Justin Long Design	Preparation of DA documentation for Oasis Change Room Upgrade		2014/2015 Capital Works			\$ 13,020	Reserve Fund
Building Services	Justin Long Design	Professional advice - Clarendon Public Toilet Facility Upgrade		2015/2016 Capital Works			\$ 1,800	Reserve Fund
Building Services	Justin Long Design	Professional advice – Cable Street Amenities upgrade		2015/2016 Capital Works	Resolution 90 - 25/03/2014 Resolution 155 - 27/05/2014		\$ 475	General Fund
Building Services	Justin Long Design	Professional advice - McGraths Hill Long Day Care Centre Multifunction Room			Resolution 123 - 26/05/2015 Resolution 339 - 24/11/2015		\$ 4,750	Reserve Fund
Building Services	Justin Long Design	Professional advice - Pound Paddock Amenities Upgrade		2013/2014 Capital Works	Resolution 174 - 18/06/2013		\$ 6,000	Reserve Fund
Building Services	Justin Long Design	Professional advice - Wilberforce Early Learning Centre			Resolution 123 - 26/05/2015 Resolution 339 - 24/11/2015		\$ 4,500	Reserve Fund
Building Services	Justin Long Design	Professional advice - Windsor Pre-School			Resolution 339 - 24/11/2015 Resolution 159 - 31/05/2016		\$ 5,750	Reserve Fund
Corporate Services & Governance	KD Wood Valuations (Aust) Pty Ltd	Valuation Services for Council owned properties		2015/2016 Action 45.3			\$ 15,600	General Fund
Cultural Services	Kevin Hennah	Library Consultation - Layout and visual merchandising initiatives		2015/2016 Action 8.3			\$ 1,450	General Fund
Waste Management	KPMG	Sewerage Scheme Business Review		2015/2016 Action 8.2, 19.3			\$ 33,749	Reserve Fund
Corporate Services & Governance	Lunney Watt & Associates Pty Ltd	Valuations for Ham Street & Colonial Drive sales & Market Rental for 242 Windsor Road, Vineyard		2015/2016 Action 45.3	Resolution 42 - 13/02/2007, Resolution 107 - 12/04/2016		\$ 17,800	General Fund
Building Services	McKinlay Morgan and Associates	Survey Consultancy Services – Building Services, various locations		2015/2016 Capital Works	Resolution 123 - 26/05/2015 Resolution 339 - 24/11/2015		\$ 13,150	General Fund
Building Services	McKinlay Morgan and Associates	Survey Consultancy Services – Tennyson Rural Fire Shed			Resolution 52 - 23/02/2016		\$ 1,800	Reserve Fund
Construction & Maintenance	McKinlay Morgan and Associates	Survey and Acquisition Plan – Upper McDonald Rd		2015/2016 Capital Works			\$ 14,500	General Fund
Construction & Maintenance	McKinlay Morgan and Associates	Survey and Acquisition Plan – West Portland Road		2015/2016 Capital Works			\$ 8,485	Grant & Reserve Fund
Corporate Services & Governance	McKinlay Morgan and Associates	Survey Consultancy Services – Property		2015/2016 No specific Action		Operational Activity	\$ 2,415	General Fund
Design & Mapping	McKinlay Morgan and Associates	Survey Consultancy – Webbs Creek Rd			Resolution 123 - 24/11/2015		\$ 2,000	General Fund
Strategic Planning	Micromex Systems Pty Ltd	Community Survey		2015/2016 Action 54.1			\$ 22,350	General Fund
Waste Management	Ndevr Environmental Pty Ltd	ERF Project Registration and Advice		2015/2016 Action 23.3			\$ 6,980	Reserve Fund
Development Services	OCP Architects	Heritage Advisory Services		2015/2016 No specific Action		Operational Activity	\$ 21,477	General & Grant Fund
Risk Management	OHS Services Australia	WHS Training		2015/2016 Action 52.3			\$ 29,779	General Fund
Building Services	R & M Brown Consultancy	Condition Audits of Council Properties		2015/2016 Action 8.1			\$ 4,500	General Fund
Waste Management	SESL Australia	Foreign material sampling-HCWMF		2015/2016 Action 23.3			\$ 2,430	Reserve Fund
Strategic Planning	SGS Economics and Planning Pty Ltd	Housing Demand Assessment For Penrith and Hawkesbury LGAs	Environmental Planning and Assessment Act			Housing Demand Analysis to inform Council's input	\$ 21,188	General Fund
Waste Management	SLR Consulting Australia Pty Ltd	Acoustic services South Windsor STP		2015/2016 Action 15.3			\$ 5,900	Reserve Fund
Financial Services	Spectra Financial Services	Investment Advisory Services	Office of Local Government				\$ 26,000	General Fund
Building Services	Taylor Lauder Bersten Pty Ltd	Engineering Services Richmond Seniors Centre Upgrade		2013/2014 Capital Works			\$ 1,981	Reserve Fund
Information Services	Technology One Ltd	IT Consultancy services		2015/2016 Action 51.5			\$ 35,359	General Fund
Parks & Recreation	The Playground Doctor	Playground Inspections and safety surfacing		2015/2016 No specific Action		Operational Activity	\$ 10,560	General Fund
Corporate Services & Governance	Travers Environmental Pty Ltd	Flora and Fauna assessment 139 Colonial Drive, Bligh Park			Resolution 223 - 11/08/2015		\$ 7,750	Reserve Fund
Parks & Recreation	UmbaCo Landscape Architects Pty Ltd	Governor Phillip Park Master Plan		2015/2016 Capital Works			\$ 6,360	General Fund
Risk Management	Workplace Navigation Pty Ltd	Workers Compensation Management Services		2015/2016 Action 52.3			\$ 27,250	General Fund
Strategic Planning	Worley Parsons Services Pty Ltd	Hawkesbury River Dredging Business Case		2015/2016 Action 16.3	Business Case considered at Meeting on 27/10/2015	Briefing Session 15/10/2013	\$ 69,445	General Fund
Strategic Planning	Worley Parsons Services Pty Ltd	Landowner meeting Catta Precinct	Environmental Planning and Assessment Act		Resolution 354 - 08/12/2015	Review of Pitt Town Stormwater Strategy following Mayor's minute including Stormwater Plan review to inform the preparation of catchment plans within the Pitt Town Development Precincts	\$ 2,045	General Fund
Total Consultancies for 2015/2016							\$ 636,757	

Branch	Consultant	Matter	Legislation	Operational Plan	Council Resolution	Other	Amount	Funding Source	Funding
Consultancies for 2016/2017	Consultant	Matter	Legislation	Operational Plan	Council Resolution	Other	Amount	Funding Source	Funding
Branch	Consultant	Matter	Legislation	Operational Plan	Council Resolution	Other	Amount	Funding Source	Funding
Building Services	Barbara Tarnawski Architect	Architects fees - Concept stage 1 & 2 DA/CC - Glossodia BFS			Resolution 52 - 23/02/2016		\$ 7,505	Reserve Fund	Contribution Reserve
Building Services	Circle Z Design Pty Ltd	Amended drawings for additions at McGraths Hill Child Care			Resolution 123 - 26/05/2015 Resolution 339 - 24/11/2015		\$ 650	Reserve Fund	S94 Recreation Buildings Catchment 3 District Reserve
Building Services	Circle Z Design Pty Ltd	Checking of Workshop drawings - Tennyson RFS Shed			Resolution 52 - 23/02/2016		\$ 400	Reserve Fund	Reserve Fund
Building Services	Justin Long Design	Preparation of Tender/Construction documents - Clarendon Public Toilet Facility Upgrade		2015/2016 Capital Works			\$ 4,200	Reserve Fund	S94A Contributions Reserve
Building Services	Justin Long Design	Professional fees - Contract Admin McGraths Hill Long Day Care Centre Multifunction Room			Resolution 123 - 26/05/2015 Resolution 339 - 24/11/2015		\$ 500	Reserve Fund	S94 Community Facilities Catch 2
Building Services	Justin Long Design	Professional fees - Contract Admin Wilberforce Early Learning Centre			Resolution 123 - 26/05/2015 Resolution 339 - 24/11/2015		\$ 500	Reserve Fund	S94 Community Facilities Catch 3
Building Services	Justin Long Design	Professional fees - Contract Admin Windsor Preschool			Resolution 339 - 24/11/2015 Resolution 159 - 31/05/2016		\$ 3,070	Reserve Fund	S94 Community Facilities Catch 3
Building Services	Justin Long Design	Professional fees - Documentation Deerubbin Library Refurbishment			Resolution 159 - 31/05/2016		\$ 4,000	Grant Fund	State Library NSW Grant
Building Services	Justin Long Design	Schematic Design - Council Chambers Refurbishment		2016/2017 No specific Action		Operational Activity	\$ 1,340	General Fund	General Fund
Building Services	Justin Long Design	Schematic Design - Master Plan for the upgrade of the North Richmond Community Precinct		2015/2016 Capital Works			\$ 5,000	Reserve Fund	S94 Community Facilities Catch 1
Building Services	McKinlay Morgan and Associates	Survey for new Tennyson Fire Shed			Resolution 52 - 23/02/2016		\$ 600	Reserve Fund	Contribution Reserve
Building Services	Norman, Disney and Young Consultant	Site Infrastructure Assessment - Wilberforce Depot		2016/2017 Capital Works			\$ 6,800	General Fund	General Fund
Building Services	Slattery Australia Pty Ltd	Cost Plan - Upgrade of the North Richmond Community Precinct		2015/2016 Capital Works			\$ 4,200	Reserve Fund	S94 Community Facilities Catch 1
Community Services	McKinlay Morgan and Associates	Easement plan-Senior Citizens March St Richmond			Resolution 414 - 29/11/2016		\$ 3,433	Reserve Fund	S94 Car Parking Reserve
Construction & Maintenance	Barker Ryan Stewart	Bridge Design Scope Variation - Redesign of Abutment Design Documentation		2015/2016 Capital Works			\$ 4,200	Reserve Fund	LIRS Loan Reserve
Construction & Maintenance	Barker Ryan Stewart	Investigation/Report for Price Lane Agnes Banks			Resolution 414 - 29/11/2016		\$ 2,100	Reserve Fund	Multi Year Projects Reserve
Construction & Maintenance	Infrastructure Management Group Pty Ltd	Roads Network Condition Assessment		2016/2017 Action 46.1, 26.1			\$ 59,850	General Fund	General Fund
Construction & Maintenance	Lunney Watt & Associates Pty Ltd	Property Valuation - 45 Bowen Mountain Road		2016/2017 Capital Works			\$ 3,500	General Fund	General Fund
Construction & Maintenance	McKinlay Morgan and Associates	Survey Road acquisition Plans-Mount Tootie Rd Bilpin			Resolution 205 - 28/06/2017		\$ 10,122	General Fund	General Fund
Construction & Maintenance	McKinlay Morgan and Associates	Survey, mark boundaries and prepare sketch and Easement Plan - Lot 43 Upper Macdonald Rd, Upper Macdonald, Bridge construction		2016/2017 Capital Works			\$ 3,350	General & Grant Fund	LIRS Loan Reserve and General Fund
Corporate Services & Governance	KD Wood Valuations (Aust) Pty Ltd	Valuation Services for Council owned properties		2016/2017 Action 45.3			\$ 13,000	General & Reserve Fund	General Fund & LIRS Loan Reserve
Corporate Services & Governance	Lunney Watt & Associates Pty Ltd	Market Rental Assessment - Macquarie Park House, Freemans Reach		2016/2017 Action 45.3			\$ 4,000	General Fund	General Fund
Corporate Services & Governance	Lunney Watt & Associates Pty Ltd	Property Valuation - 246 Windsor Rd, Vineyard		2016/2017 Action 45.3			\$ 5,000	General Fund	General Fund
Corporate Services & Governance	Lunney Watt & Associates Pty Ltd	Rental Valuation of Suites 1,2 & 3 at Deerubbin Centre		2016/2017 Action 45.3			\$ 2,700	General Fund	General Fund
Corporate Services & Governance	Lunney Watt & Associates Pty Ltd	Valuation-Council owned investment properties	Office of Local Government				\$ 21,600	General Fund	General Fund
Cultural Services	Roslyn Russell	Assessment of Museum Collection		2016/2017 No specific Action		Operational Activity	\$ 4,500	Grant Fund	National Library of Australia Grant
Development Services	Kevin Mills and Associates	Ecological advice - LEC matter HCC v PRJM (37 lots)		2016/2017 No specific Action		Operational Activity	\$ 6,020	General Fund	General Fund
Development Services	Landscape Matrix Pty Ltd	HCC v PRJM Pty Ltd-LEC 162961/16 (52lots)		2016/2017 No specific Action		Operational Activity	\$ 8,774	General Fund	General Fund
Development Services	Lanfax Laboratories	HCC v PRJM Pty Ltd-LEC 162961/16 (52lots)		2016/2017 No specific Action		Operational Activity	\$ 15,404	General Fund	General Fund
Development Services	OCP Architects	Heritage Advisory Services		2016/2017 No specific Action		Operational Activity	\$ 33,312	Grant & Reserve Fund	Heritage Assistance Grant & Heritage Reserve
Development Services	PSM Consult Pty Ltd	Geotechnical assessment - Redbank Subdivision		2016/2017 No specific Action		Operational Activity	\$ 15,000	General Fund	General Fund
Emergency Services	Penrith City Council	Preparation of LEMP	NSW Office Emergency Management (ECRM)				\$ 2,900	General Fund	General Fund
Environment & Regulatory Services	EC Sustainable	Domestic Waste Kerbside Audit		2016/2017 Action 18.3			\$ 25,604	Reserve Fund	Domestic Waste
Environment & Regulatory Services	Whitehead & Associates	Peer review for an on-site SMS for Duck Processing Plant - Tennyson Rd			Resolution 130 - 9/05/2017 Resolution 244 - 8/08/2017		\$ 1,950	General Fund	General Fund
Financial Services	Efficiency Works Pty Ltd	Review of Mechanics' Workshop		2016/2017 Action 8.2			\$ 4,500	General Fund	General Fund
Financial Services	Spectra Financial Services	Investment Advisory Services	Office of Local Government				\$ 19,000	General Fund	General Fund
Information Services	Computer Systems (Australia) Pty Ltd	Exchange online for Councillors & migration from RedSky		2016/2017 Action 51.5			\$ 5,648	General Fund	General Fund
Information Services	Computer Systems (Australia) Pty Ltd	SCM0020 Contract - Internet Perimeter Upgrade Project		2016/2017 Action 51.5			\$ 3,023	General Fund	General Fund
Information Services	Technology One	Software Support and Training - Asset Management		2016/2017 Action 51.5			\$ 33,810	General Fund	General Fund
Parks & Recreation	Cultural Heritage Connections Pty Ltd	Snoileton's Reserve Plan of Management			Resolution 288 - 30/08/2016		\$ 13,890	Reserve Fund	S7.12 Contributions Reserve
Parks & Recreation	Department of Finance and Services	Quarterly Water Monitoring - Richmond Pool	Environment Protection Authority				\$ 288	General Fund	General Fund
Parks & Recreation	Eco Logical Australia Pty Ltd	Preparation of Biobanking Feasibility Report	Biodiversity Conservation Act 2016			Responding to legislation changes in order to inform process to determine suitability of Council owned / controlled sites for bio-banking opportunities	\$ 5,860	General Fund	General Fund
Parks & Recreation	Justin Long Design	Professional fees - Construction Phase Hawkesbury Oasis Refurbishment		2016/2017 Capital Works			\$ 3,000	Reserve Fund	S94A Contributions Reserve
Parks & Recreation	SJA Construction Services	Project Management - Hawkesbury Oasis Refurbishment		2016/2017 Capital Works			\$ 9,800	General & Reserve Fund	S94 Recreation Buildings Catchment 3 District General Fund and S94 Recreation Buildings Catchment 3 District Reserve
Parks & Recreation	Slattery Australia Pty Ltd	Amenities upgrade-Hawkesbury Oasis Refurbishment		2016/2017 Capital Works			\$ 600	General & Reserve Fund	General Fund
Parks & Recreation	The Playground Doctor	Quarterly Inspection of Playground Equipment & Safety Surfacing		2016/2017 No specific Action		Operational Activity	\$ 5,345	General Fund	General Fund
Parks & Recreation	UmbaCo Landscape Architects Pty Ltd	Detailed Playground Design - Governor Philip Park Stage 1 & 2		2016/2017 Capital Works			\$ 23,978	General Fund	General Fund
Risk Management	Atkins Occupational Health	Ergonomic assessments		2016/2017 Action 52.3			\$ 1,280	General Fund	General Fund
Risk Management	Davel G Hart Consulting Pty Ltd Consultancy Fees	Estimation-Workers Comp Liabilities 30/06/2016 and calculation of bank guarantees for 2016/17	State Insurance Regulatory Authority				\$ 7,000	General Fund	General Fund
Risk Management	OHS Services Australia	Asbestos Management Compliance Audit	State Insurance Regulatory Authority				\$ 7,158	General Fund	General Fund
Risk Management	OHS Services Australia	Hazardous Chemical Audit	State Insurance Regulatory Authority				\$ 7,516	General Fund	General Fund
Risk Management	OHS Services Australia	NAT Gap Analysis for HCC 26/7/16-29/7/16		2016/2017 Action 52.3			\$ 8,351	General Fund	General Fund
Risk Management	Workplace Navigation Pty Ltd	Workers Compensation Management Services		2016/2017 Action 52.3			\$ 12,900	General Fund	General Fund
Strategic Planning	George Shad	Heritage Grant - Windsor and Richmond Town Centres		2016/2017 Action 2.1			\$ 2,850	Reserve and General Fund	Heritage Reserve and General Fund
Strategic Planning	Graham Edds and Associates	Heritage Grant - Windsor and Richmond Town Centres		2016/2017 Action 2.1			\$ 7,955	Reserve and General Fund	Heritage Reserve and General Fund
Strategic Planning	Micromex Research	Community Survey - Service Levels		2016/2017 Action 2.1			\$ 18,600	General Fund	General Fund
Strategic Planning	Richmond Literary Institute	Heritage Grant - Windsor and Richmond Town Centres		2016/2017 Action 2.1			\$ 4,000	Reserve and General Fund	Heritage Reserve and General Fund
Strategic Planning	SGS Economics and Planning Pty Ltd	Hawkesbury River Foreshore Investigations		2016/2017 Capital Works			\$ 20,948	General Fund	General Fund
Strategic Planning	The Trustee for the PPANDP Trust	Hawkesbury Community Strategic Plan Facilitation		2016/2017 No specific Action		Operational Activity	\$ 28,520	General Fund	General Fund
Strategic Planning	Worley Parsons Services Pty Ltd	National Dredging Investigations - Draft Business Case Report		2015/2016 Action 16.3	Business Case considered at Meeting on 27/10/2015	Briefing Session 15/10/2013	\$ 9,925	General Fund	General Fund
Waste Management	Australian Sustainable Business Group	Preparation/Delivery of Report-Outcomes Treatment Works		2016/2017 Action 23.1			\$ 3,600	Reserve Fund	Sewer Operating Reserve
Waste Management	AVMAP - Aerial	Environmental monitoring - Waste Management Facilities	Environment Protection Authority				\$ 15,200	Reserve Fund	Waste Management Reserve
Waste Management	Barker Ryan Stewart	Civil Engineering Design Services - Flow Calculations		2016/2017 Action 23.1			\$ 1,170	Reserve Fund	Waste Management Reserve
Waste Management	BB Tech	2016 Mandatory Audit-SW/STP & Environment	Environment Protection Authority				\$ 51,200	Reserve Fund	Sewer Operating Reserve
Waste Management	Department of Finance and Services	Hawkesbury Sewerage DSP Update	Environment Protection Authority				\$ 19,000	Reserve Fund	Waste Management Reserve
Waste Management	Department of Finance and Services	Hawkesbury Sewerage SBP Update	Environment Protection Authority				\$ 27,216	Reserve Fund	Waste Management Reserve
Waste Management	Department of Finance and Services	Upgrade Pump C & Assoc Works-Windsor Sewerage Scheme	Environment Protection Authority				\$ 18,872	Reserve Fund	Waste Management Reserve
Waste Management	Environmental Earth Sciences (NSW)	East Kurrajong Groundwater well extension works		2016/2017 No specific Action			\$ 8,060	Reserve Fund	Waste Management Reserve
Waste Management	Environmental Earth Sciences (NSW)	East Kurrajong Landfill Monitoring Network Installation works		2016/2017 No specific Action			\$ 13,470	Reserve Fund	Waste Management Reserve
Waste Management	Environmental Earth Sciences (NSW)	Environmental monitoring - Waste Management Facility	Environment Protection Authority				\$ 69,345	Reserve Fund	Waste Management Reserve
Waste Management	Environmental Earth Sciences (NSW)	WMF Gas Monitoring Network Installation Works-Waste Depot	Environment Protection Authority				\$ 14,985	Reserve Fund	Waste Management Reserve
Waste Management	Environmental Earth Sciences (NSW)	WMF Gas Trench Installation -Waste Depot		2016/2017 Action 23.3			\$ 1,300	Reserve Fund	Waste Management Reserve
Waste Management	GHD Pty Ltd	Environmental Review and concept design - Waste Management Facility		2016/2017 Action 23.3			\$ 9,984	Reserve Fund	Waste Management Reserve
Waste Management	Justin Long Design	Revision to Schematic Design Plans - Waste Depot Chemical Cleanout Facility	Environment Protection Authority				\$ 580	Reserve Fund	Waste Management Reserve
Waste Management	Mervyn Crawford	Mediation Services - Waste Management Facility		2016/2017 No specific Action		Operational Activity	\$ 1,560	Reserve Fund	Waste Management Reserve
Waste Management	Petrolink Engineering Pty Ltd	Chemical storage recommendations - STW		2016/2017 No specific Action		Operational Activity	\$ 850	Reserve Fund	Sewer Operating Reserve
Total Consultancies for 2016/2017							\$ 807,220		

Branch	Consultant	Matter	Legislation	Operational Plan	Council Resolution	Other	Amount	Funding Source	Funding
Consultancies for 2017/2018	Consultant	Matter	Legislation	Operational Plan	Council Resolution	Other	Amount	Funding Source	Funding
Legal Services	Acoustic Logic Consultancy Pty Ltd	Noise Impact Assessment - HCC v Marshall Rural LEC 169852/17		2017/2018 No specific Action		Link to Class 4 appeal to support Council's case to defend our position	\$ 4,000	General Fund	General Fund
Waste Management	AVMAP - Aerial	Waste Management Facility Aerial Surveying and Reporting	Environment Protection Authority				\$ 10,900	Reserve Fund	Waste Management Reserve
Financial Services	BLG Building Surveying Services Pty Ltd	Swimming Pools Inspection Program					\$ 3,000	General Fund	General Fund
Waste Management	BusinessBasics Australia Pty Ltd	Gap Analysis - ENV Management System - Sewer		2017/2018 Action 3.1.2			\$ 4,200	Reserve Fund	Sewer Operating Reserve
Strategic Planning	Clouston Associates	Kurrajong and Kurmond investigation Area Strategy			Resolution 400 - 29/11/2016 makes reference to struture planning		\$ 31,700	General Fund	General Fund
Parks & Recreation	Complete Urban Pty Ltd	Collection of Asset Data		2017/2018 Action 1.3.2			\$ 2,388	General Fund	General Fund
Community Services	Council for Intellectual Disability	Disability and Inclusion Action Plan		2017/2018 Action 2.5.1			\$ 4,800	General Fund	General Fund
Parks & Recreation	Cultural Heritage Connections Pty Ltd	Singletons Reserve Plan of Management			Resolution 288 - 30/08/2018		\$ 1,980	Reserve Fund	S7.13 Contributions Reserve
Executive Management	DMB Consulting Pty Ltd	Cost Shifting Report			Resolution 24 - 30/01/2018, subsequently rescinded Resolution 212 - 10/07/2018		\$ 10,000	General Fund	General Fund
Environment & Regulatory Services	EC Sustainable	Domestic Waste Kerbside Audit		2017/2018 Action 3.3.1			\$ 14,875	Reserve Fund	Waste Management Reserve
Strategic Planning	Eco Logical Australia Pty Ltd	Biodiversity Framework and Reporting - Council Land		2017/2018 Action 3.1.3			\$ 28,115	General Fund	General Fund
Waste Management	Environmental Earth Sciences (NSW)	Environmental monitoring - Waste Management Facility	Environment Protection Authority				\$ 81,261	Reserve Fund	Waste Management Reserve
Waste Management	GHD Pty Ltd	Water balance Modelling - Waste Management Facility		2017/2018 Action 3.1.2			\$ 11,691	Reserve Fund	Waste Management Reserve
Parks & Recreation	International Conservation Services Pty Ltd	War Memorial Conservation Reports			Resolution 388 - 28/11/2017		\$ 12,600	Grant Fund	Community War Memorials Department of Veterans Affairs Grant
Human Resources	John Woodhouse	Psychology consultant - Staff matters		2017/2018 No specific Action		Operational Activity	\$ 670	General Fund	General Fund
Executive Management	Judith Carpenter and Associates Pty Ltd	Recruitment - Director City Planning		2017/2018 No specific Action		Operational Activity	\$ 14,460	General Fund	General Fund
Community Services	Koorimunication	Equipment Hire - Sorry Day		2017/2018 Action 5.2.4			\$ 800	General Fund	General Fund
Community Services	Koorimunication	RAP Working Group workshops		2017/2018 Action 5.2.4			\$ 2,760	General Fund	General Fund
Strategic Planning	Lucas Stapleton	Thompson Square Conservation Management Plan			Resolution 220 - 11/07/2017		\$ 73	Reserve Fund	S7.12 Contributions Reserve
Strategic Planning	Lucas Stapleton	Thompson Square Conservation Management Plan			Resolution 220 - 11/07/2017		\$ 166	Reserve Fund	S7.12 Contributions Reserve
Strategic Planning	Lucas Stapleton	Thompson Square Conservation Management Plan			Resolution 220 - 11/07/2017		\$ 77,912	Reserve Fund	S7.12 Contributions Reserve
Waste Management	McKinlay Morgan and Associates P/L	Preparation of easement plan - 35a Harris Street, South Windsor			Resolution 205 - 14/11/2017		\$ 1,000	Reserve Fund	Sewer Operating Reserve
Strategic Planning	Micromex Systems Pty Ltd	Community survey		2017/2018 No specific Action		Operational Activity -	\$ 27,500	Reserve Fund	Waste Management Reserve
Financial Services	Morrison Low Consultants Pty Ltd	Review of Fit for the Future Reassessment Proposal			Resolution 275 - 29/08/2017		\$ 10,220	General Fund	General Fund
Development Services	OCP Architects	Heritage Advisory Services		2017/2018 No specific Action		Operational Activity	\$ 56,928	General & Grant Fund	Heritage Grant
Parks & Recreation	Parkland Planners	Yarramundi and Navua Reserves Plan of Management		2017/2018 No specific Action		Operational Activity - Paid for by Developer	\$ 7,000	Reserve Fund	Contributions Reserve
Community Services	Peppercom Services Inc	Community Sector Capacity Building		2017/2018 Action 2.5.1			\$ 1,500	General Fund	General Fund
Waste Management	pH Water Consultants Pty Ltd	Report on optimisation of SWS1W after environmental spill		2017/2018 Action 1.5.1			\$ 10,170	Reserve Fund	Sewer Operating Reserve
Strategic Planning	Place Score Pty	Care Factor and Place Assessments survey		2017/2018 Action 5.6.2			\$ 70,350	General Fund	General Fund
Development Services	Project X Solutions Pty Ltd	Fire Damage Assessment - The Jolly Frog Hotel		2017/2018 No specific Action		Operational Activity	\$ 3,750	General Fund	General Fund
Waste Management	QMSCS Pty Ltd	Management system assessment and certification		2017/2018 Action 3.1.2			\$ 5,860	Reserve Fund	Sewer Operating Reserve
Information Services	Risk Logic Pty Ltd	Business Continuity Plan		2017/2018 Action 1.6.2			\$ 418	Reserve Fund	Information Technology Reserve
Information Services	Risk Logic Pty Ltd	Business Continuity Plan		2017/2018 Action 1.6.2			\$ 84	Reserve Fund	Information Technology Reserve
Information Services	Risk Logic Pty Ltd	Business Continuity Plan		2017/2018 Action 1.6.2			\$ 47	Reserve Fund	Information Technology Reserve
Information Services	Risk Logic Pty Ltd	Business Continuity Plan		2017/2018 Action 1.6.2			\$ 28,860	General & Reserve Fund	Information Technology Reserve
Cultural Services	Roslyn Russell	Museum event		2017/2018 Action 2.5.2			\$ 109	General Fund	General Fund
Strategic Planning	SGS Economics and Planning Pty Ltd	Hawkesbury River Foreshore Investigation		2017/2018 Action 5.4.1			\$ 14,363	General Fund	General Fund
Strategic Planning	SJB Planning (NSW) Pty Ltd	Town Planning services - 64 Grandview Lane Bowen Mountain			Resolution 268 - 13/12/2016		\$ 8,100	General Fund	General Fund
Design & Mapping	SMEC Australia	Hawkesbury Traffic Study		2017/2018 Action 4.1.1			\$ 57,162	General Fund	General Fund
Financial Services	Spectra Financial Services	Investment Advisory Services	Office of Local Government				\$ 19,000	General Fund	General Fund
Strategic Planning	Squarelink Pty Ltd	Draft Flood Liable Land Plan		2017/2018 Action 2.1.1 and 5.4.3			\$ 6,300	General Fund	General Fund
Strategic Planning	Squarelink Pty Ltd	Draft Planning Proposal - Richmond Lowlands			Resolution 164 - 29/05/2018		\$ 9,400	General Fund	General Fund
Strategic Planning	Squarelink Pty Ltd	Floodplain Data and Planning Policy			Resolution 54 - 28/02/2017		\$ 5,400	General Fund	General Fund
Strategic Planning	Tara Louise Madden T/as Topdeck	Develop Inquiry submission - Windsor Bridge			Resolution 369 - 28/11/2017		\$ 6,200	General Fund	General Fund
Strategic Planning	Tara Louise Madden T/as Topdeck	Develop introduction for KKIA strategy			Resolution 400 - 29/11/2016 makes reference to struture planning		\$ 510	General Fund	General Fund
Information Services	Technology One	Annual Software Support		2017/2018 Action 1.6.2			\$ 6,414	General Fund	General Fund
Strategic Planning	The Stafford Group	Develop City Deal Tourism Paper		2017/2018 Action 5.7.2			\$ 6,970	General Fund	General Fund
Risk Management	The Trustee for David Zaman Services Trust	Actuarial Assessment - Self Insured Works Compensation	State Insurance Regulatory Authority				\$ 16,500	General & Reserve Fund	General & Carryover Reserve
Strategic Planning	The Trustee for GLN Planning Unit Trust	Vineyard Contributions Plan		2017/2018 Action 1.3.1 and 4.2.2			\$ 6,300	General Fund	General Fund
Strategic Planning	The Trustee for Lucas Stapleton Johnson	Thompson Square Conservation Management Plan			Resolution 220 - 11/07/2017		\$ 20,503	Reserve Fund	S7.12 Contributions Reserve
Strategic Planning	The Trustee for the Lee Family Trust	Assessment Report - DA0332/16 396 Bells Line of Rd		2017/2018 No specific Action		Operational Activity - Hawkesbury Independent	\$ 6,400	General Fund	General Fund
Strategic Planning	The Trustee for the Lee Family Trust	Kurrajong and Kurmond investigation Area Strategy			Resolution 400 - 29/11/2016 makes reference to struture planning		\$ 5,800	General Fund	General Fund
Corporate Communications, Events and Services	The Trustee for the PPANDP Trust	Digital Training Program for Councillors		2017/2018 Action 1.2.1			\$ 4,100	General Fund	General Fund
Corporate Communications, Events and Services	The Trustee for the PPANDP Trust	HCC Digital Strategy		2017/2018 Action 1.2.1			\$ 11,190	General Fund	General Fund
Waste Management	Wateroz Pty Ltd	Audit & revision - Development Servicing Plan - Sewer		2017/2018 Action 4.2.2			\$ 5,880	Reserve Fund	Sewer Operating Reserve
Total Consultancies for 2017/2018							\$ 758,639		

Branch	Consultant	Matter	Legislation	Operational Plan	Council Resolution	Other	Amount	Funding Source	Funding
Consultancies for 2018/2019	Consultant	Matter	Legislation	Operational Plan	Council Resolution	Other	Amount	Funding Source	Funding
Parks & Recreation	Allen Jack and Cottier Architects	Mileham Reserve Masterplan							
Human Resources	Allied Risk Solutions Pty Ltd	Interview panel - Compliance Coordinator		2018/2019 No specific Action		Required in association with the PCYC - Indoor Stadium project	\$ 15,000	General Fund	General Fund
Strategic Planning	Art Pharmacy Pty Ltd	Revitalisation Projects - Town Centres		2018/2019 Action 5.5.1		Operational Activity	\$ 900	General Fund	General Fund
Strategic Planning	Barbara Tarnawski Architects Pty Ltd	Revitalisation Projects - Town Centres submission		2018/2019 Action 5.5.1			\$ 2,360	General Fund	General Fund
Construction & Maintenance	Barker Ryan Stewart	Mt Irvine/Bowen Creek Rd Fire Trail			Resolution 117 - 8/05/2018		\$ 109,570	Grant Fund	Bowens Creek Fire Trail - Dept Infrastructure and Regional Development
Waste Management	Benbow Environmental Pty Ltd	Environmental monitoring - East Kurrajong Tip	Environment Protection Authority				\$ 11,625	General Fund	
Strategic Planning	Black Pebble	Town Centre Vacant Premises Campaign		2018/2019 Action 5.5.1			\$ 3,080	Reserve Fund	Contributions Reserve
Development Services	BLG Building Surveying Services Pty Ltd	Review and report on Fire Safety Practices		2018/2019 Action 1.3.1			\$ 4,000	General Fund	General Fund
Development Services	BLG Building Surveying Services Pty Ltd	Review and report on Swimming Pool Inspection Program		2018/2019 Action 1.3.1			\$ 6,000	General Fund	General Fund
Waste Management	BusinessBasics Australia Pty Ltd	Internal Audits and Management Review		2018/2019 Action 1.3.1			\$ 11,400	Reserve Fund	Sewer Operating Reserve
Strategic Planning	Carter Williamson Architects	Heritage Advisory Committee presentation	Heritage Act 1977		Resolution 21 - 30/01/2018	Presentation from Immediate Past President of NSW Chapter Australian Institute of Architects to Heritage Advisory Committee regarding excellence in urban design and challenges and opportunities for establishing Heritage Awards	\$ 1,500	General Fund	General Fund
Strategic Planning	City Plan Heritage Pty Ltd	Heritage Study		2018/2019 Action 2.5.3			\$ 32,736	Grant & General Fund	Heritage Near Me Grant - Office Environment and Heritage and General Fund
Strategic Planning	Cloud 9 Shoes Pty Ltd	Annual Fire Safety Statements		2018/2019 No specific Action		To ensure Council is meeting legislative requirements	\$ 1,540	General Fund	General Fund
Strategic Planning	Cloud 9 Shoes Pty Ltd	Planning Division Delegation Instrument		2018/2019 No specific Action		Responding to an internal audit action from the Developer Contributions internal audit	\$ 1,760	General Fund	General Fund
Strategic Planning	Cloud 9 Shoes Pty Ltd	Compliance and Enforcement Policy and procedure		2018/2019 No specific Action		Responding to an internal audit action from the Regulatory Services internal audit	\$ 1,870	General Fund	General Fund
Strategic Planning	Clouston Associates	Kurrajong and Kurmond investigation area strategy			Resolution 400 - 29/11/2016 makes reference to strutcture planning		\$ 15,000	General Fund	General Fund
Strategic Planning	Compelling Economics Pty Ltd	REMPAN Profile Report - Revitalisation Projects		2018/2019 Action 5.5.1			\$ 6,180	General Fund	General Fund
Parks & Recreation	Complete Urban Pty Ltd	Collection of asset data		2018/2019 Action 1.3.2			\$ 1,103	General Fund	General Fund
Parks & Recreation	Complete Urban Pty Ltd	Parks and Recreation Asset Survey		2018/2019 Action 1.3.2			\$ 35,850	General Fund	General Fund
Waste Management	Consulting Earth Scientists	Environmental monitoring data - Tip	Environment Protection Authority				\$ 10,840	Reserve Fund	Waste Management Reserve
Strategic Planning	Department of Finance, Services and Innovation	Heritage Advisory Committee	Heritage Act 1977		Resolution 21 - 30/01/2018	Presentation from Immediate Past President of NSW Chapter Australian Institute of Architects to Heritage Advisory Committee regarding excellence in urban design and challenges and opportunities for establishing Heritage Awards	\$ 1,250	General Fund	General Fund
Construction & Maintenance	Durkin Constructors Pty Ltd	Road Network Conditions Assessment		2018/2019 Action 1.3.2			\$ 8,110	General Fund	General Fund
Strategic Planning	Eco Logical Australia Pty Ltd	Hawkesbury Strategic Biodiversity Plan		2018/2019 Action 3.1.3			\$ 12,445	General Fund	General Fund
Strategic Planning	Edge Land Planning	Hawkesbury Rural Lands Strategy		2018/2019 Action 5.8.4			\$ 28,000	General Fund	General Fund
Waste Management	Environmental Earth Sciences (NSW)	Environmental monitoring - Waste Management Facility	Environment Protection Authority				\$ 96,259	Reserve Fund	Waste Management Reserve
Environment & Regulatory Services	Enviroview Pty Ltd	Inspection and response to WRT Works - Windsor Golf Club		2018/2019 No specific Action		Operational Activity	\$ 104	Reserve Fund	Waste Management Reserve
Environment & Regulatory Services	Enviroview Pty Ltd	Inspection and response to WRT Works - Windsor Golf Club		2018/2019 No specific Action		Operational Activity	\$ 3,420	Reserve Fund	Waste Management Reserve
Parks & Recreation	GML Heritage Pty Ltd	St Albans Old Cemetery Management		2018/2019 No specific Action		Operational Activity	\$ 88	Grant Fund	Heritage Near Me Grant - Office of Environment and Heritage
Strategic Planning	GML Heritage Pty Ltd	Cemeteries Conservation Management Plan			Resolution 276 - 26/11/2019		\$ 26,000	Grant Fund	Heritage Near Me Grant - Office of Environment and Heritage
Strategic Planning	Graham Edds and Associates	Hawkesbury River System Conservation Management Plan		2018/2019 Action 5.4.2			\$ 10,000	Grant Fund	Heritage Near Me Grant - Office of Environment and Heritage
Strategic Planning	Graham Edds and Associates	Privately Owned Heritage Remediation (Stage 1) - Heritage Near Me Grant			Resolution 276 - 26/11/2019		\$ 95,900	General and Grant Fund	Heritage Near Me Grant Office of Environment and Heritage and General Fund
Strategic Planning	HiIPDA Pty Ltd	Hawkesbury Housing Study		2018/2019 Action 5.3.2			\$ 56,585	General Fund	General Fund
Strategic Planning	HiIPDA Pty Ltd	Hawkesbury River System Conservation Management Plan		2018/2019 Action 5.4.3			\$ 10,130	General Fund	General Fund
Financial Services	Igor kannikov	Transition to new Accounting Standards		2018/2019 No specific Action			\$ 2,950	Reserve Fund	Contingencies Reserve
Construction & Maintenance	Infrastructure Management Group Pty Ltd	Road Network Conditions Assessment		2018/2019 Action 1.3.2			\$ 39,716	Grant and General Fund	Financial Assistance Grant to Local Government and General Fund
Building Services	Johnstaff Projects (NSW) Pty Ltd	Project Management Services		2018/2019 Capital Works			\$ 20,534	General & Reserve Fund	Waste Management Reserve
Human Resources	Judith Carpenter and Associates Pty Ltd	Recruitment - Director City Planning		2018/2019 No specific Action		Operational Activity	\$ 7,230	General Fund	General Fund
Strategic Planning	K D Wood Valuations	Vineyard IPART Submission			Resolution 123 - 12/06/2019		\$ 6,000	General Fund	General Fund
Construction & Maintenance	Kathy Jones & Associates	Lower Portland Ferry Facilitation		2018/2019 Action 2.4.2			\$ 12,175	General Fund	General Fund
Risk Management	Lane Safety Systems Pty Ltd	Review of WHS Management System Structure		2018/2019 No specific Action			\$ 37,950	General Fund	General Fund
Strategic Planning	Leyshon Consulting Pty Ltd	Demographic Research and advice on Local Town Centres		2018/2019 Action 5.2.1			\$ 6,656	General Fund	General Fund
Strategic Planning	Lucas Stapleton	Thompson Square Conservation Management Plan			Resolution 220 - 11/07/2017		\$ 5,101	General Fund	General Fund
Environment & Regulatory Services	Martens and Associates Pty Ltd	Contamination Report Review -37 Sargents Road Ebenezer		2018/2019 Action 3.1.4			\$ 1,500	General Fund	General Fund
Strategic Planning	Mitchell Brandtman (NSW)	Vineyard IPART Submission			Resolution 123 - 12/06/2019		\$ 8,550	General Fund	General Fund
Strategic Planning	Natasha Rose Opt Land	Revitalisation Projects - Town Centres		2018/2019 Action 5.5.1			\$ 1,600	General Fund	General Fund
Human Resources	O'Connell Workplace Relations Pty Ltd	Industrial Relations Matters		2018/2019 No specific Action		Operational Activity	\$ 2,187	General Fund	General Fund
Development Services	OCP Architects	Heritage Advisory Services		2018/2019 No specific Action		Operational Activity	\$ 71,155	General Fund	General Fund
Strategic Planning	Office of Environment and Heritage	Upper Hawkesbury Estuary Health Card Grant		2018/2019 Action 5.4.2			\$ 15,358	General Fund	General Fund
Waste Management	Orbital Traffic Management (Aust) Pty Ltd	Community Recycling Centre			Resolution 131 26/05/2015		\$ 700	Reserve Fund	Waste Management Reserve
Waste Management	pH Water Consultants Pty Ltd	EPA Report regarding critical points and management in relation to any future spills at STW		2018/2019 Action 4.2.1			\$ 7,680	Reserve Fund	Sewer Operating Reserve
Waste Management	pH Water Consultants Pty Ltd	STW Process improvements for Licence requirements and discharge results	Requirement of Licence issued by Environment Protection Authority				\$ 7,800	Reserve Fund	Sewer Operating Reserve
Cultural Services	Preservation Australia Pty Ltd	Assessment of Museum Collection		2018/2019 No specific Action		Operational Activity	\$ 4,500	Grant Fund	National Library of Australia Grant
Waste Management	QMSCS Pty Ltd	Management System Asset & Certification - Sewer		2018/2019 Action 4.2.1		Operational Activity	\$ 5,160	Reserve Fund	Sewer Operating Reserve
Risk Management	Qualcor Business Consulting	Chain of Responsibility - Gap Analysis	Heavy Vehicle National Law				\$ 2,438	General Fund	General Fund
Environment & Regulatory Services	Renzo Tonin and Associates Pty Ltd	Noise Data Analysis		2018/2019 No specific Action		Operational Activity	\$ 6,406	General Fund	General Fund
Parks & Recreation	Rookwood General Cemetery Trust	Community Conservation-Hawkesbury Historic Cemeteries			Resolution 276 - 26/11/2019		\$ 10,600	Grant and General Fund	Heritage Near Me Funding - Office Environment and Heritage and General Fund
Waste Management	SESI Australia Pty Ltd	Garden Organics sampling and analysis - Waste Management Facility		2018/2019 Action 4.2.1		Operational Activity	\$ 4,770	Reserve Fund	Waste Management Reserve
Strategic Planning	SGS Economics and Planning Pty Ltd	Hawkesbury Employment Lands Strategy		2018/2019 Action 2.1.1			\$ 12,374	General Fund	General Fund
Strategic Planning	SGS Economics and Planning Pty Ltd	Western Sydney Transport Corridors			Resolution 188 - 13/06/2018		\$ 10,435	General Fund	General Fund
Executive Management	SJB Planning (NSW) Pty Ltd	Planning Advice - Pitt Town Development				Responding to an internal audit action from the Developer Contributions internal audit	\$ 3,700	General Fund	General Fund
Design & Mapping	SMEC Australia	Hawkesbury Traffic Study		2018/2019 Action 4.1.1			\$ 94,762	Reserve Fund	Waste Management Reserve
Waste Management	SMEC Australia	Waste Management Facility - Erosion and Sediment Control		2018/2019 Action 4.2.1			\$ 12,498	Reserve Fund	Waste Management Reserve
Strategic Planning	Square Link Pty	Flood Liable Land Policy	Environmental Planning and Assessment Act Hawkesbury Local Environmentall Plan 2012 Hawkesbury Floodplain Risk Management Plan	2017/2018 Action 2.1.1			\$ 4,100	General Fund	General Fund
Strategic Planning	Square Link Pty	House Keeping Planning Proposal	Environmental Planning and Assessment Act		Resolution 41 - 31/03/2015	Council resolution to commence General Amendments (Housekeeping) LEP Amendment	\$ 7,000	General Fund	General Fund
Strategic Planning	Square Link Pty	Planning - Richmond Lowlands	Environmental Planning and Assessment Act		Resolution 54 - 28/02/2017		\$ 13,500	General Fund	General Fund
Strategic Planning	Square Link Pty	Section 64 Plan		2018/2019 No specific Action		Operational Activity	\$ 10,500	General Fund	General Fund
Parks & Recreation	Standard Training Pty Ltd	Traffic Management Site Audit		2018/2019 No specific Action		Operational Activity	\$ 3,000	General Fund	General Fund
Design & Mapping	The Trustee for Drodz Family Trust	Local Traffic Studies		2018/2019 Action 4.1.1			\$ 38,000	Grant Fund	Roads and Maritime Servies Grant
Strategic Planning	The Trustee for GLN Planning Unit Trust	Vineyard Precinct Contributions Plan			Resolution 123 - 12/06/2019		\$ 50,453	General Fund	General Fund
Strategic Planning	The Trustee for the Lee Family Trust	Local Planning Panel presentation - St Josephs Church	Environmental Planning and Assessment Act		Resolution 375 - 28/11/2017 Resolution 154,155 8/05/2018	Part of 82A review	\$ 6,200	General Fund	General Fund
Development Services	Transformative Planning	Town Planning services - DA392/18 78 Lennox St		2018/2019 No specific Action		Operational Activity	\$ 6,327	General Fund	General Fund
Development Services	Transformative Planning	Town Planning services - DA88/16 26 Fahey Rd		2018/2019 No specific Action		Operational Activity	\$ 1,920	General Fund	General Fund
Total Consultancies for 2018/2019							\$ 1,189,790		

Branch	Consultant	Matter	Legislation	Operational Plan	Council Resolution	Other	Amount	Funding Source	Funding
Consultancies for 2019/2020									
Branch	Consultant	Matter	Legislation	Operational Plan	Council Resolution	Other	Amount	Funding Source	Funding
Development Services	Advisian Pty Ltd	Freemans Reach - DA0508/18		2018/2019 No specific Action		Operational Activity	\$ 9,030	General Fund	General Fund
Financial Services	Amicus Advisory Pty Ltd	Investment advisory services	Office of Local Government				\$ 8,000	General Fund	General Fund
Waste Management	APV Valuers	Desktop Valuation of Wastewater Infrastructure Assets		2019/2020 Action 1.3.2			\$ 1,750	Reserve Fund	Sewer Operating Reserve
Waste Management	Arcadis Australia Pacific Pty Ltd	Waste Services Review		2019/2020 Action 3.3.1			\$ 73,250	Reserve Fund	Waste Management Reserve
Waste Management	Australian Sustainable Business Group	Pollution Incident Response Management Plan Testing & Training package - Waste Management Facility		2019/2020 Action 4.2.1			\$ 3,100	Reserve Fund	Waste Management Reserve
Waste Management	AVMAP - Aerial	Overfill HCWMF and creation of plan based on final capping model		2019/2020 Action 4.2.1			\$ 600	Reserve Fund	Waste Management Reserve
Waste Management	AVMAP - Aerial	Field survey to locate monitoring wells - Waste Management Facility	Environment Protection Authority				\$ 1,800	Reserve Fund	Waste Management Reserve
Waste Management	AVMAP - Aerial	Aerial survey and volumetric reporting - Waste Management Facility	Environment Protection Authority				\$ 15,300	Reserve Fund	Waste Management Reserve
Environment & Regulatory Services	BAM ecology	Site Visit and condition report - 57 Prentis Lane, Ebenezer		2019/2020 No specific Action		Operational Activity	\$ 7,000	General Fund	General Fund
City Design & Economic Development	Better Cities Project	Urban design services - Liveability Program		2019/2020 Action 5.2.2			\$ 27,950	Grant Fund	Western City Deals Liveability Grant
Strategic Planning	Boston Planning	Kurmond & Kurrajong Structure Plan			Resolution 400 - 29/11/2016 makes reference to structure planning		\$ 7,350	General Fund	General Fund
Waste Management	Business Basics	Internal audits and Management Review		2019/2020 Action 1.3.1			\$ 8,775	Reserve Fund	Sewer Operating Reserve
Parks & Recreation	C Leisure Pty Ltd	Analysis & review - Council aquatic facilities		2019/2020 Action 4.3.2			\$ 43,298	Reserve Fund	S7.11 Recreation Buildings Reserve
Environment & Regulatory Services	C R Kennedy & Company Pty Ltd	Training and Service UAV - Aerial Imaging and volumetric scan - 349 St Albans Rd, Lower Macdonald		2019/2020 No specific Action		Operational Activity	\$ 500	General Fund	General Fund
Development Services	CC Reeves	Heritage advisory services		2019/2020 No specific Action		Operational Activity	\$ 660	General Fund	General Fund
Financial Services	Centium Group	Procurement investigation		2019/2020 Action 1.3.1			\$ 9,544	General Fund	General Fund
Strategic Planning	City Plan Heritage Pty Ltd	Documentation review and project inception - Heritage Study		2019/2020 Action 2.5.3			\$ 124,902	Grant and General Fund	Heritage Near Me Grant - Office Environment and Heritage and General Fund
Strategic Planning	Cloud 9 Shoes Pty Ltd	IPART Compliance and Enforcement report - Report on Hawkesbury implications				Assistance to prepare a submission in response to State Government changes in Compliance and Enforcement	\$ 440	General Fund	General Fund
Strategic Planning	Clouston Associates	Kurrajong and Kurmond Investigation Area Strategy			Resolution 400 - 29/11/2016 makes reference to strcture planning		\$ 3,755	General Fund	General Fund
Strategic Planning	Department of Planning, Industry and Environment	Water quality monitoring & report - Upper Hawkesbury Health Card		2019/2020 Action 3.1.2			\$ 28,728	Reserve Fund	Sewer Operating Reserve
Waste Management	Department of Planning, Industry and Environment	EPA Audit Improvement Plan for Sth Windsor Sewer Treatment Plant	Environment Protection Authority				\$ 20,000	Reserve Fund	Stormwater Charge Reserve
Executive Management	DMB Consulting	Attend a meeting with Councillor Ross and staff to provide advice regarding Council's compliance with reporting requirements with the Quarterly Budget Review Guidelines issued by the office of local Government					\$ 5,000	General Fund	General Fund
Strategic Planning	Eco Logical Australia Pty Ltd	Update Biodiversity Overlay and OEH Biodiversity Map		2019/2020 Action 3.1.3			\$ 8,270	General Fund	General Fund
Strategic Planning	Edge Land Planning	Hawkesbury Rural Lands Strategy		2019/2020 Action 5.3.3			\$ 52,717	General Fund	General Fund
Emergency and Crisis Response	Enterprising Hawkesbury Pty Ltd	Bushfire Recovery Coordination for local agencies and activities		2019/2020 Action 2.1.1			\$ 10,000	General Fund	General Fund
Waste Management	EnviroLab Services	Pollutants Analysis for HCC Tip Leachate		2018/2019 Action 4.2.1			\$ 775	Reserve Fund	Sewer Operating Reserve
Waste Management	Environmental Earth Sciences (NSW)	Environmental monitoring - Waste Management Facility	Environment Protection Authority				\$ 87,212	Reserve Fund	Waste Management Reserve
Executive Management	Facebook	Facebook boost for Council's Operational Plan		2019/2020 No specific Action		Operational Activity	\$ 100	General Fund	General Fund
City Design & Economic Development	GML Heritage Pty Ltd	Sth Windsor Cemetery Archaeological Assessment & ARD Report - Liveability Program		2019/2020 Action 5.2.2			\$ 5,775	General Fund	General Fund
Strategic Planning	GML Heritage Pty Ltd	Aboriginal Heritage Study		2019/2020 Action 5.2.1			\$ 21,832	General Fund	General Fund
Strategic Planning	GML Heritage Pty Ltd	Cemeteries Conservation Management Plan			Resolution 276 26/11/2019		\$ 39,000	General Fund	General Fund
Emergency and Crisis Response	Go Collaborate	Concept design and grant application for Bushfire Recovery funding		2019/2020 Action 2.1.1			\$ 6,350	General Fund	General Fund
Community Services	Hawkesbury Community Outreach Services	Contribution to the Hawkesbury Seniors Lunch		2019/2020 Action 2.3.1			\$ 455	General Fund	General Fund
Strategic Planning	Heritage Council of NSW	Conservation Management Plan Windsor			Resolution 220 - 11/07/2017		\$ 2,000	General and Reserve Fund	Heritage Reserve and General Fund
Strategic Planning	HillPDA Pty Ltd	Hawkesbury Housing study		2019/2020 Action 5.3.2			\$ 6,285	General Fund	General Fund
Financial Services	Igor Iannikov	Transition to new Accounting Standards		2019/2020 No specific Action		Operational Activity	\$ 7,988	Reserve Fund	Contingency Reserve
Strategic Planning	J Wyndham Prince	IPART submission - Vineyard Precinct			Resolution 123 - 12/06/2019		\$ 10,630	General Fund	General Fund
Executive Management	John Woodhouse	Facilitation of staff matters		2019/2020 No specific Action		Operational Activity	\$ 745	Reserve Fund	Contingency Reserve
Strategic Planning	K D Wood Valuations	IPART Draft Report - Vineyard Precinct			Resolution 123 - 12/06/2019		\$ 4,545	General Fund	General Fund
Strategic Planning	Kinesis Pty Ltd	Climate Change Strategy		2019/2020 Action 3.3.2			\$ 22,550	General Fund	General Fund
Parks & Recreation	LandArc	Preparation of Plan of Management and Masterplan for McQuade Park		2019/2020 No specific Action		Operational Activity	\$ 8,680	Grant Fund	Giant Reed Control - River Health Program Grant
Executive Management	Lucia Mann	Design and Layout of Hawkesbury City Council Operational Plan 2020		2019/2020 No specific Action		Operational Activity	\$ 1,726	General Fund	General Fund
Executive Management	O'Connell Workplace Relations	Independent investigations and facilitation of staff matters		2019/2020 No specific Action		Operational Activity	\$ 17,259	General Fund	General Fund
Development Services	OCP Architects	Heritage advisory services		2019/2020 No specific Action		Operational Activity	\$ 30,959	General Fund	Heritage Grant and General Fund
Executive Management	OHS Services Australia	WHS professional services - Jan 2020		2019/2020 No specific Action		Operational Activity	\$ 3,683	Reserve Fund	Waste Management Reserve
Community Services	Open Collar	Facilitation services - Hawkesbury Connect Program		2019/2020 Action 2.3.3			\$ 2,250	General Fund	General Fund
City Design & Economic Development	Place Score Pty	George Street South Windsor - Mainstreet Recovery - Bushfire Recovery		2019/2020 Action 2.1.1			\$ 16,000	General Fund	General Fund
City Design & Economic Development	Place Score Pty	Windsor Mall - Mainstreet Recovery - Town Centre Vacant Premises Program		2019/2020 Action 5.2.2			\$ 16,000	General Fund	General Fund
Development Services	Project X Solutions Pty Ltd	Join Frog Hotel assessment of fire damaged brickwork	Environmental Planning and Assessment Act	2019/2020 No specific Action		Heritage Assessment	\$ 2,425	General Fund	General Fund
Waste Management	QMSCS Pty Ltd	Management System Assessment and Certification services system review		2018/2019 Action 4.2.1			\$ 5,160	Reserve Fund	Sewer Operating Reserve
City Design & Economic Development	Sama Design	Urban design services - Liveability Program		2019/2020 Action 5.2.2			\$ 33,460	Grant Fund	Western City Deals Liveability Grant
Strategic Planning	SGS Economics and Planning Pty Ltd	Demographics Study	Environmental Planning and Assessment Act			Demographic Study to inform Background studies and Local Strategic Planning Staement and a response to requirements of the Greater Sydney Region Plan and Western Ct District Plan	\$ 31,679	General Fund	General Fund
Strategic Planning	SGS Economics and Planning Pty Ltd	Employment Lands Strategy		2019/2020 Action 5.3.1			\$ 95,045	General Fund	General Fund
Executive Management	SJB Planning (NSW) Pty Ltd	Planning Advice - Pitt Town Development				Responding to an internal audit action from the Developer Contributions internal audit	\$ 14,060	General Fund	General Fund
Design & Mapping	SMEC Australia	Hawkesbury Traffic Study Stage 2		2018/2019 Action 4.1.1			\$ 82,226	General Fund	General Fund
City Design & Economic Development	Sparrowly Group	Business Recovery Capacity Building Program		2019/2020 Action 2.1.1			\$ 19,545	Grant Fund	Bushfire Community Resilience & Economic Recovery Grant
Community Services	Support Choices Australia Pty Ltd	HCC Dementia Grant Expression of Interest		2019/2020 Action 2.1.2			\$ 432	General Fund	General Fund
Community Services	Support Choices Australia Pty Ltd	Review of Peppercom Services Inc reports and management plans		2019/2020 Action 2.3.3			\$ 1,674	General Fund	General Fund
Parks & Recreation	Taylor Brammer	Colbee Park Plan of Management and Masterplan			Resolution 388 - 28/11/2017 Resolution 275 26/11/2019		\$ 31,500	General & Reserve Fund	General Fund & Unspent Contributions Reserve
Emergency and Crisis Response	The Detail Devil	Grant application for Bushfire Recovery Tourism funding		2019/2020 Action 2.1.1			\$ 1,168	General Fund	General Fund
Community Services	The Gap Consulting	Facilitation services - Hawkesbury Connect Program		2019/2020 Action 2.3.3			\$ 12,000	General Fund	General Fund
Design & Mapping	The Trustees for Doodz Family Trust	Design and costing package - Traffic Facilities - Pedestrian Access Program		2018/2019 Action 4.1.1			\$ 13,200	Grant Fund	Pedestrian Safety Program - RMS
Strategic Planning	The Trustees for GLN Planning Unit Trust	Vineyard Contributions Plan			Resolution 123 - 12/06/2019		\$ 15,590	General Fund	General Fund
Waste Management	Tonkin Consulting Pty Ltd	LF Leachate Management Options Study		2019/2020 Action 4.2.1			\$ 9,950	Reserve Fund	Waste Management Reserve
Emergency and Crisis Response	Total Site Solutions Pty Ltd	Commercial Strategies and Analysis Report in relation to mobile communications black spots		2018/2019 Action 4.2.1			\$ 8,950	General Fund	General Fund
Development Services	Transformative Planning	DA304/18 Assessment - RFS Kurmond			Resolution 388 - 28/11/2017 Resolution 275 26/11/2019		\$ 4,200	General Fund	General Fund
City Design & Economic Development	Urbis Pty Ltd	Community Engagement Master & Public Domain Plans - Liveability Program		2019/2020 Action 5.6.2			\$ 183,930	Grant Fund	Western City Deals Liveability Grant
City Design & Economic Development	Western Sydney Women	Small Business Group Mentoring - June 20 - Bushfire Recovery		2019/2020 Action 2.1.1			\$ 32,000	Grant Fund	Bushfire Community Resilience & Economic Recovery Grant
Executive Management	Workplace Investigation Services Pty Ltd	Investigation services		2019/2020 No specific Action		Operational Activity	\$ 12,086	Reserve Fund	Contingency Reserve
Strategic Planning	Your Energy Friend	Online video content - Community Education		2019/2020 Action 3.3.2			\$ 2,250	General Fund	General Fund
Total Consultancies for 2019/2020							\$ 1,397,245		

AT 3 - Detailed Legal Expenditure

Legal Matters for 2014/2015	
Matter	Amount
Advice regarding 5 New Street, Windsor	590
Code of Conduct Matters	6,302
Contract preparation for Management of Hawkesbury Leisure Centre	8,624
Dedicated Right of Way as a Public Road	546
HCC & Marshall v Basscave LEC14/11052 & 14/11053	10,813
HCC ats Basscave Pty Ltd - 106 Ridges Ln & 1 Powells Ln Richmond Lowlands	3,048
HCC ats M&B Investments LEC 15/10229 - DA0476/14 - 16-18 Kaldow Lane, Grose Vale	12,810
HCC ats N/Rich Joint Venture LEC15/10213 15/10214 - 98 Grose Vale Road North Richmond DA0451/2014 & DA0452/14	4,428
HCC ats Ogg 128 Grose River Rd LEC 15/10381	1,963
HCC v AJ Sullivan - Parking Offence	2,016
HCC v Bennett LEC 10279/14-33 Old Bells Line of Rd	10,526
HCC v Farrell-Penalty Notice 3051160521	593
HCC v Huang Brothers-DA Appeal 01/04/14	1,980
HCC v Montgomery Plan'g Solutions LEC20783/14-33 Old Bells	4,523
HCC v S Lee-2Lagoon Rd-Unhealthy condition of Premises 24.04	1,288
HCC v Saviour D'Anastasi POEO Act	5,728
HCC v Urban City Consulting LEC 10142/13-69 Blacktown Rd	19,685
HCC v Urban City Consulting LEC 10872/13-466 Wilberforce Rd	74,771
HCC v Zenzmaier Develop without consent 13/05/14	5,006
HCC&Croft Manor Farm v Turner&Whan LEC40304/15	6,044
HCCvBasscave P/L-Unlawful use of land Dec14	11,084
Legal advice - Code of Meeting Practice	443
Legal advice - DA0347/10 - 1006A Comleroy Road	950
Legal advice - Development Application fees for subdivision	403
Legal advice - Interpretation of legislation - DA0716/14 - 128 Grose River Rd	2,038
Legal advice - Lease from National Parks and Wildlife regarding Oakville RFS in Scheyville National Park	1,663
Legal advice - Railcorp Interface Agreement	525
Legal advice - Subdivision Application DA0476/14	1,888
Legal advice - Use of closed circuit television and surveillance devices	2,750
Redbank Development	6,592
Reimbursement of costs - HCC v Ford & Portelli - Tree Removal Glossodia	-33,746
Reimbursement of costs - HCC v Hanley-Stop in loading zone 5/03/14	-1,035
Section 94 Pitt Town Acquisitions	26,929
Sponsorship Agreement	1,491
Various Property Matters including valuations and lease preparation	45,569
Voluntary Planning Agreement - Jacaranda Ponds, Glossodia	1,325
Works in Kind Agreement - Johnson Property Group - Pitt Town Wastewater Infrastructure	4,590
	254,735
Legal Matters for 2015/2016	
Matter	Amount
Acquisition of land for Jurds' Bridge Replacement	10,715
Acquisition of land from Faber - 542 Wilberforce Road, Wilberforce	1,628
Agreement for maintenance of Infrastructure within road reserves	2,279
Certifying Authorities for Redbank Creek	1,500
Code of Conduct investigation	3,800
Contract advice - Cleaners' Tender 00947	1,213
Contract preparation for Management of Hawkesbury Leisure Centre	3,684
Council acquisition for road purposes	363
Council contracts and tenders	5,681
Development Application for Bridge over Grose River, Yarramundi	1,650
Dismissal matter	1,738
Drainage issues - 22 Price Lane, Agnes Banks	4,968
EPA investigation of the pollution spill at the Sewer Treatment Facility	24,102
HCC & Marshall v Basscave LEC14/11052 & 14/11053	8
HCC ats Bentley & Bacic LEC15/11007 Grose Vale Rd	16,054
HCC ats M&B Investments LEC 15/10229 - DA0476/14 - 16-18 Kaldow Lane, Grose Vale	35,104
HCC ats Ogg 128 Grose River Rd LEC 15/10381	27,140
HCC ats Oneten-34 Oakford Pl-LEC16/154235(fmr15/11008)	20,047
HCC ats Planet Warriewood-LEC10959/15	31,979
HCC ats Pont - 3 Bowen Mountain Road	350
HCC ats PRJM P/L-Class 4 Enforce Proceeds 2016/158902	10,932
HCC v Basscave P/L - Unlawful use of land Dec14	20,610
HCC v Celik - Non compliance 402 Pitt Town Road	2,324
HCC v Dogramaci (402 Pitt Town Rd)	8,478
HCC v Flint - Unregistered Dog Penalty - Windsor Court	4,068
HCC v Montgomery Planning Solutions LEC 20783/14-33 Old Bells Line of Road	208

Matter	Amount
HCC v Murphy - Disobey Stop Sign	3,150
HCC v PRJM P/L-LEC 15/10790-66 Wattle Cres Glossodia	23,901
HCC v PRJM P/L-LEC 16/10220 (52 LOTS) - 67 Kurrajong Road Kurrajong DA0830/15	2,198
HCC v PRJM P/L-LEC 16/10221 (8 LOTS) - Kurrajong Road KURRAJONG DA0831/15	2,628
HCC v Urban City Consulting LEC 10142/13-69 Blacktown Rd	65
HCC&Croft Manor Farm v Turner&Whan LEC40304/15	4,927
Lease with WSU for waste disposal	2,944
Legal assistance contribution to Bathurst Regional Council	1,018
Merger Proposal and Council Amalgamation	26,378
Pitt Town Waste Water Infrastructure	754
Pitt Town Wastewater Infrastructure	754
Proposed sale of 128 Eather Lane, South Windsor	1,282
Proposed sale to Tutill - 155 Colonial Drive, Bligh Park	545
Reimbursement of costs - HCC v Ford & Portelli - Tree Removal Glossodia	-117
Right of Carriageway - 140A Ponderosa Place, Lower Portland	1,500
Right of Way over private land - Webbs Creek Road	875
Road on private land - Webbs Creek Road	1,475
Sale of 8 Yarwood Place, Bligh Park	1,986
Section 94 Pitt Town Acquisitions	2,452
Sponsorship Agreement with Windsor RSL	1,071
Various Property Matters including valuations and lease preparation	43,033
Voluntary Planning Agreements	2,821
	366,258
Legal Matters for 2016/2017	
Matter	Amount
Acquisition for Road Reserve - Pt Mount Tootie Road, Bilpin	6,581
Acquisition from Bailey - Pt 713 Upper Macdonald Road	1,426
Acquisition from Cotter - Pt 413 West Portland Road, Sackville	1,437
Acquisition from McGeown - Pt 441 West Portland Road, Sackville	1,470
Advice regarding Council Wards	650
Advice regarding Heritage Conservation Incentives and Development Applications	885
Advice regarding rehoming of aggressive dogs	1,175
Code of Conduct	26,047
Confirmation of existing uses	400
Court Election of Pollute Waters PIN	5,133
Deed of Variation - Cleanaway Kerbside Contract	1,751
Designated Development - Tennyson Road	1,150
Development Application - Recreational Facility Powells Lane, Richmond	750
Drainage issues - 22 Price Lane, Agnes Banks	3,095
Extension of Easement - 45 Bowen Mountain Road	421
Granting of Easement - Senior Citizens Centre Extension	834
HCC & Anor v Marshall Rural	2,800
HCC ats Bentley & Bacic - LEC15/11007 Grose Vale Rd	1,360
HCC ats Oneten - 34 Oakford Place - LEC16/154235 (formerly 15/11008)	479
HCC ats PRJM P/L - Class 4 Enforcement Proceedings 2016/158902	3,075
HCC ats Samual - LEC 16/165394	1,000
HCC from Thornton	1,555
HCC v AM Frosstrom - LEC Appeal 2016/330088	7,392
HCC v Basscave-Development without Consent - Local Court	4,986
HCC v BD NSW (MR) P4rojevts - LEC 16/271451 & 16/271460	2,997
HCC v Bennett Property - Development without Consent - Local Court	222
HCC v C Hawley -Tree Removal Penalty Appeal - Local Court	1,747
HCC v GMR Schembri Pty Ltd - LEC 10085/16 - 727 George Street South Windsor DA0681/15	6,417
HCC v GMR Schembri Pty Ltd - LEC 16/151609 - 727 George Street South Windsor DA0681/15	1,801
HCC v Innes - LEC 2017/90235 - DA0449/15 for Dual Occupancy	343
HCC v Kamatshi - Transporting Waste - Local Court	2,021
HCC v Lewis-Disable Parking without permit	1,294
HCC v M D Falzon - EPAA Order Appeal - Local Court	443
HCC v Mackintosh - Parking Infringement - Local Court	1,370
HCC v PRJM P/L - LEC 15/10790 - 66 Wattle Crescent Glossodia	860
HCC v PRJM Pty Ltd - LEC 16/162961 (37 lots) formerly LEC 10220/16 67 Kurrajong Road Kurrajong DA0830/15	6,020
HCC v PRJM Pty Ltd - LEC 162961/16 (52lots) formerly LEC 10220/16 67 Kurrajong Road Kurrajong DA0830/15	96,714
HCC v PRJM Pty Ltd - LEC 163076/16 (8 lots) formerly LEC 10221/16 67 Kurrajong Road Kurrajong DA0831/15	2,205
HCC v PRJM Pty Ltd - LEC 199641/16 S56A Appeal	3,424
HCC v Samuel - LEC 16/165394	7,719
HCC, Basscave & Argosy v Marshall - LEC 16/160454	7,870
HCCvBasscave P/L - Unlawful use of land Dec14	31,818
Kohacek & Anor v Alexator - Subpoena to attend Court	3,595
Lease and overpayment to the WSU for waste disposal	14,507
Legal assistance contribution to Cowra Council	555
Merger Proposal and Council Amalgamation	4,175
Plan of acquisition - 4 Parts Upper Macdonald Road, St Albans	500

Matter	Amount
Pollution spill at the Sewer Treatment Facility, including prosecution	46,209
Preparation of Deed of Agreement for Sewer - Redbank Development	1,994
Professional fees - Connection with the preparation of the SEPP65 Report	1,200
Purchase of 44 Mitchell Rd, Pitt Town for Stormwater	3,496
Reimbursement of costs - HCC v Dogramaci (402 Pitt Town Rd)	-3,161
Rescission Motions	1,443
Road Dedication - Lot 2 DP 1221138	1,288
Road Dedication - Lot 2 DP 1222864	654
Section 94 Pitt Town Acquisitions	7,067
SEPP interpretation regarding exempt and complying development	1,000
Stormwater drainage	2,000
Tripartite Loan Agreement	3,326
Unauthorised Buildings and Use - 106 Ridges and 1 Powells Lanes, Richmond	260
Various Property Matters including valuations and lease preparation	28,519
Voluntary Planning Agreement - Redbank Development	7,302
Works in Kind Agreements - Minchinbury Property Holdings	1,940
Works in Kind Agreements - Johnson Property Group	7,638
	386,639
Legal Matters for 2017/2018	
Matter	Amount
Advice regarding Council proposal to record all telephone calls	3,532
Advice regarding Development Application for Transitional Group Home - 617 Bells Line of Road, Kurmond	1,800
Advice regarding GIPA request	913
Advice regarding Maintenance of Roads Contract	945
Advice regarding non compliance of orders	1,267
Advice regarding Section 64 Contribution Plan	2,275
Advice regarding the policy application of the State of the Environment Plan	1,800
Advice regarding Tree Removal 10 Old Bells Line of Road, Kurrajong	3,606
Advice regarding various enforcement proceedings	12,184
Code of Conduct	21,316
Costs associated with the proposed sale of 155 Colonial Drive, Bligh Park to Chiarelli	1,365
Development Application - World Polo Championships	3,735
Dog attack - 805 Kurmond Rd, Freemans Reach	1,611
Hawkesbury War Memorial Criteria	2,753
HCC & Andonian 91 Salters Road, Wilberforce	457
HCC and Marshall - Nuisance for Stormwater Damage - 22 Price Lane, Agnes Banks	1,870
HCC ats 421 Tennyson Rd (Duck Farm Lt 21 DP 867467)	1,387
HCC ats Constantine - LEC 292737/17 - 61 Coromandel Rd	4,347
HCC ats Pont - Supreme Court Proceedings 2017/388000 - 3 Bowen Mountain Road	3,885
HCC ats PRJM P/L - Class 4 Enforce Proceeds 2016/158902	2,518
HCC purchase from Bona Vista	2,575
HCC v Basscave - Development without Consent - Local Court	1,210
HCC v Creel - Various LEC - 607 Settlers Rd	15,895
HCC v INA Operations - LEC 17/345848 DA0685/16	18,485
HCC v Isaac Property Developments - LEC 17/327958 - 752 George St, Windsor	9,617
HCC v Kanoona Enterprises - Parking infringement	1,378
HCC v Kara-Ali & Southern Chariot Stud	14,007
HCC v Lewis-Disable Parking without permit	73
HCC v Marshall Rural - LEC 169852/17 - Powells/Ridge Lane	5,062
HCC v Masterman - LEC 17/322823 DA S82A0011/17 - 584 Lower Colo Road Lower Portland	4,654
HCC v Pomeroy - LEC 2017/192890 DA0123/17 - 179 Windsor Street Richmond DA0123/17	39,132
HCC v PRJM Pty Ltd - LEC 163076/16 (8 lots) formerly LEC 10221/16 67 Kurrajong Road Kurrajong DA0831/15	2,070
HCC v Sorbello - LEC 17/356019 DA0018/17-28 Fitzroy Lane	13,511
HCC v Whittaker - Parking Offence	498
Interim Heritage Order - 108 Lennox Street Richmond	1,350
Put and Call Option Deed - proposed sale of 139 Colonial Drive, Bligh Park	1,872
Put and Call Option Deed - proposed sale of Tiningi Youth Centre	1,872
Rehoming of Aggressive Dogs Advice	2,100
Reimbursement of costs - HCC v Dogramaci (402 Pitt Town Rd)	-1,400
Reimbursement of costs - HCC v PRJM Pty Ltd - LEC 16/162961 (37 lots)	-2,372
Reimbursement of costs - Performance Deed HCC & Vermont Quays P/L (Cleary Precinct)	-6,993
Road Dedication - Lot 1 in Deposited Plan 1222864	667
Sale of Land for Easement - 35A Harris St, Windsor	1,984
SEPP65 Review - 122-132 Macquarie Street, Windsor	3,800
Various Property Matters including valuations and lease preparation	84,122
Various Rating advice	4,110
Voluntary Planning Agreement - Redbank Development	423
Windsor Bridge Replacement Project Inquiry	885
Works in Kind Agreement - Johnson Property Group	8,595
	302,741
Legal Matters for 2018/2019	
Matter	Amount
Acquisition from O'Shea - 74 Laws Farm Road, Lower Portland	3,219
Advice regarding Boarding House - 100 Mileham Street, South Windsor	2,750

Matter	Amount
Advice regarding Caravan Park Development Consent - Pitt Town Bottoms Road	5,405
Advice regarding certifier - 74 Mileham Street, South Windsor	1,485
Advice regarding Companion Animal Disclaimer	540
Advice regarding consent - 8 Lilly Place, Kurrajong	885
Advice regarding Container Deposit Scheme Refund Sharing Agreement with Visy	1,469
Advice regarding delegations and authorities	649
Advice regarding Development Application - 127 Pitt Town Dural Road, Pitt Town	3,200
Advice regarding Development Consent DA001/16	2,300
Advice regarding dog attack - 805 Kurmond Road Freemans Reach	5,403
Advice regarding Flow Systems - Sewer Management at Pitt Town	3,824
Advice regarding Hawkesbury Leisure Centre	1,450
Advice regarding land swap with Morris - Part 629 and 669 Upper Macdonald Road, St Albans	1,324
Advice regarding lapsed Development Consent - 871 Sackville Road, Sackville	1,093
Advice regarding Lapsed Development Consent DA 0444/07 - 307 Tizzana Road, Ebenezer	2,000
Advice regarding letter to Ghantous - 37 Sargents Rd and 355 Stannix Rd, Ebenezer	1,180
Advice regarding Recycling Contract with JJ Richards	1,583
Advice regarding Sewage Management Facility Fees	2,818
Advice regarding the acquisition of Crown Land	6,460
Advice regarding the Lease and Licence Agreements with Child Care Centres	1,495
Advice regarding the Tripartite Loan Agreement	950
Advice regarding the use of drone technology	2,232
Advice regarding Tourist and Visitor Accommodation	1,700
Advice regarding Ugly Mug, Kurrajong	1,918
Advice regarding Unauthorised Development - Kurmond Road	2,995
Advice regarding unauthorised use - 250 Gorricks Run, Upper Macdonald	7,872
Advice regarding unhealthy condition of 2 Lagoon Road	2,178
Advice regarding various enforcement proceedings	4,514
Advice regarding Windsor Bridge Approval	1,350
Application to install moveable dwelling - Hawkesbury Riverside Gardens	2,200
Code of Conduct	22,940
Contribution towards legal costs - Karimba Properties vs Sydney City, Bayside City & North Sydney Councils	3,219
Dog attack - 73 Willeroo Drive, Windsor Downs	980
Domestic Waste Incident DOI 20/8/18	8,839
Execution of Orders - 1-17 Reynolds Road, Londonderry	537
Failure to Comply - 1259 Bells Line of Road, Kurrajong Heights	6,946
Flood Planning and Development - Western City District Plan	2,500
HCC acquisition from Sternbeck-Part 2024 Upper Macdonald Rd	4,875
HCC and Andonian - 91 Salters Road, Wilberforce	420
HCC ats Chanthapanya - Local Court proceedings 2018/358061	3,036
HCC ats Gualtieri - unlawful development - Unit 10, 74 Mileham Street, South Windsor	2,845
HCC ats Klinsic - Commence building without Construction Certificate	4,627
HCC ats Newman - Alleged existing use rights for a vehicle repair station	1,480
HCC ats Pont - Supreme Court Proceedings 2017/388000 - 3 Bowen Mountain Road	42,007
HCC v Budeja 1182 Kurmond Rd LEC 2018/273827	9,975
HCC v Creel - Various LEC -607 Settlers Rd	11,560
HCC v Flaherty-LEC 2018/179643-86 Arthur Phillip Dr	2,791
HCC v Freehold Trevet Dev No1-LEC 2018/174321-Comm Rd	40,417
HCC v Goodridge & Goodridge-LEC 19/91138 DA0422/18- 292 Fair	3,234
HCC v Hargraves - Impact of Stormwater on 70 Wells St, Pitt Town	76,409
HCC v Hatt Pty Ltd-LEC 19/89309 DA0334/18- Redbank Neighbour	3,511
HCC v Huang Brothers - Unauthorised development	1,151
HCC v Isaac Property Developments LEC 17/327958 - 752 George	4,539
HCC v Jaloussis-LEC 19/108736 DA0286/16- 88 Godalla Road	778
HCC v JPG - LEC 2019/70674 - 43 Bootles Lane	2,579
HCC v Kavanagh-LEC 2019/78751-Bulga St	3,740
HCC v Plant Warriewood-LEC 168005/18	24,700
HCC v PRJM P/L-LEC 19/71321-66 Wattle Cres Glossodia	8,444
HCC v Tebbutt - Sewage Facility 2018 Bells Line of Road, Bilpin	4,082
HCC v Trevet Property 78 Menin Rd LEC 2018/293128	2,611
HCC v Trevet Prop-LEC 2018/174310-HarknessRdO'ville	26,722
HCC v Vella-LEC 2019/54064-163 Glenidol Road	4,018
HCCvKara-Alii & Sthn Chariot Stud LEC Class 4 18/19712	113,741
INA Operations-LEC 17/345848 DA0685/16	20,054
Land and Environment Court proceedings - Broos Road	2,253
Land and Environment Court Proceedings - Terrace Wharf Reserve and Thompson Square	24,044
Memorandum of Understanding and Lease - PCYC	5,795
Pitt Town Works in Kind Agreements	13,631
Processing fees for Penalty Notices - Compliance	119
Prosecution of Wright and Mahboub - Lochiel House	1,918

Matter	Amount
Rio Music Event, Riverside Resort	5,351
RMS Land Acquisition-New Windsor Bridge	31,074
Section 94 Pitt Town Acquisitions	2,030
Trade Waste Agreement with Evoqua	2,395
Unlawful development - 128 Mountain Avenue	213
Various Property Matters including valuations and lease preparation	113,282
Various Rating advice	10,500
	761,349
Legal Matters for 2019/2020	
Matter	Amount
Acquisition costs - Road Reserve Realignment	1,829
Acquisition of Land associated with Jurd's Bridge	13,317
Advice concerning definition of a truck depot - regarding 436 Bells Line of Road	3,068
Advice on CDS Refund Sharing Agreement with Visy	1,331
Advice regarding Assessment of DAs for Subdivision and Road Work Prior to Contributions Plan	2,525
Advice regarding continuation of the Extraordinary Meeting of Council February 2020 that was unable to be completed	2,212
Advice regarding proposed amnesty on enforcement action for a minimum period of 12 months in relation to existing unauthorised dwellings, buildings and structures located on land classified as either significantly flood affected or bushfire prone	2,000
Advice regarding Stop Work Orders and how it relates to earthworks	1,210
Advice regarding the continuation of the joint internal audit process with Blue Mountain City Council	1,501
Advice regarding the Hawkesbury Civic and Citizenship Advisory Committee	900
Advice regarding the Section 377 delegations between Council and Peppercorn Services	2,133
Advice regarding Voluntary Planning Agreement for Redbank Community Centre	2,038
Awarding of tenders and contracts	5,968
Boarding House - 19 Francis Street, Richmond	1,623
Code of Conduct	17,415
Deed of Agreement - Cleary DA0832/14	1,800
Development Application - DA0113/18 - 25 Chapel Street, Richmond	2,005
Development without consent - 487 and 505 Pitt Town Bottoms Road	2,082
Disclosure of information in relation to contaminated land	2,750
Examination Process - Hawkesbury House Pty Ltd (In Liquidation)	81,322
Extension to Waste Servie Contract	1,761
HCC and Sena Lee - Orders regarding 2 Lagoon Road, Pitt Town	1,905
HCC ats Galea - Characterisation of Development	2,563
HCC ats Haskell and Anor - Subpoena	1,418
HCC ats MJSD Investments - Unauthorised clearing of vegetation - 105 Kurrajong Road	2,293
HCC ats Newman - Alleged existing use rights for a vehicle repair station	4,498
HCC ats Norgate Haulage - Non-compliance development consent - 135 Mountain Avenue	2,609
HCC ats Pont - Supreme Courts Proceedings - 3 Bowen Mountain Road, Grose Vale	26,953
HCC ats Sant - LEC 2019/106539 - 74 Broos Road, Oakville	1,103
HCC ats Succar LEC 2020/38168 - 84 Livingston Street Windsor (Development without consent)	8,132
HCC v Camilleri-LEC 114195/20-15 Box Ave,W'force S96091/19	1,770
HCC v Clarendon Pub-LEC 19/391831-244 H'bury Valley	2,695
HCC v Flaherty-LEC 2019/100819-382 Grose Vale Rd North Richmond	13,805
HCC v Goodridge & Goodridge - LEC 19/91138 DA0422/18 - 292 Fairey Road	469
HCC v Hadden - LEC 2019/365266 & 365226 - DA0308/19 - 35 Haddens Road, Wilberforce	2,274
HCC v Hargraves - Impact of Stormwater on 70 Wells St, Pitt Town	1,121
HCC v Hargraves - Impact of Stormwater on 44 Mitchell Road, Pitt Town	3,157
HCC v Hatt Pty Ltd-LEC 19/89309 DA0334/18- Redbank Neighbour	8,186
HCC v Iontaobhas, MOC, O'Connor-LEC 2019/365226 DA0307/19	3,170
HCC v Iontaobhas, MOC, O'Connor-LEC 2019/365266 DA0308/19	32,432
HCC v JPG - LEC 2019/70674 - 43 Bootles Lane	17,423
HCC v Kavanagh-LEC 2019/78751-Bulga Street	61,388
HCC v Micallef-LEC 20/114195-DA0580/15 - 15 Box Avenue Wilberforce S96091/19	1,811
HCC v Micallef-LEC 20/80125-DA0540/19 - 542 Windsor Road Vineyard DA540/19	3,295
HCC v MS Windsor St-LEC 20/85835-DA0547/19 - 197 Windsor Street Richmond DA0547/19	3,593
HCC v PRJM P/L-LEC 19/71321-66 Wattle Crescent, Glossodia	83,251
HCC v PRJM Pty Ltd-LEC 162961/16 (52lots)	14,275
HCC v RMS - Acquisition of Windsor Bridge	81,157
HCC V Smith - Devleopment without Consent - 286 Carters Road, Grose Vale	6,727
HCC v Vella-LEC 2019/32980-163 Glenidol Road	17,927
HCC v Vella-LEC 2019/54064-163 Glenidol Road	1,358
HCCvKara-Alii & Sthn Chariot Stud LEC Class4 18/19712	13,544
Interpreter services - HCC ats Huang Brothers	762
Law Enforcement Liaison Fee	18
Londonderry Planning Proposal - reclassification of Land at The Driftway	1,700
Management and Operation of Hawkesbury Leisure Centre	16,143
Proposed enforcement proceedings - 1 Powells Lane & 2 Ridges Lane, Richmond	354
Public Domain CCTV footage on private camera	295
Registration of Business Names	5,574
Section 88B Instrument - DP830425 Windsor Downs	437

Matter	Amount
Sewage Mangement Inspection Program	1,600
Surveillance investigation - 3 major organisations for compliance action	12,940
Unauthorised development of structure for dog kennels	1,888
Various Property Matters including valuations and lease preparation	60,443
Voluntary Planning Agreement - Redbank Community Centre	3,431
	682,671

Appendix 1 - Detailed information regarding all Land and Environment Court matters

Project	Description	Appellant	Reason	DA Notes if applicable	Appeal Outcome	2019/20 Actual	2018/19 Actual	2017/18 Actual	2016/17 Actual	2015/16 Actual	2014/15 Actual
003557	HCC v Huang Brothers LEC 10142/14 69 Blacktown Road Freemans Reach DA0280/13 & DA0002/14 S82A Review	Applicant	Appeal against Council's refusal	DA - Officer recommended refusal, elected Council refused the DA. S82A - Officer recommended refusal, elected Council refused the S82A. At appeal Consent Orders entered into by Council.	Upheld	-	-	-	-	65	1,980
003566	HCC v Urban City Consulting LEC 10872/13 446 Wilberforce Rd Wilberforce DA0366/12	Applicant	Appeal against Council's refusal	Delegated (Officer) refusal	Dismissed	-	-	-	-	-	74,771
003741	HCC v Montgomery Planning Solutions LEC 10749/14 33 Old Bells Line of Road Kurrajong DA0466/14	Applicant	Appeal against deemed refusal	Approved by elected Council-appeal to LEC unnecessary.	Discontinued	-	-	-	-	208	4,523
003847	Marshall v Basscave P/L and HCC LEC 40313/15 1 Powells Lane & 106 Ridges Lane Richmond Lowlands (development without consent)	Marshall Rural P/L	Initiated by other party (Class 4)	N/A	Ordered to cease use as function centre	-	-	-	-	20,610	11,084
003857	HCC v MB Investments LEC 10229/15 16-18 Kaldow Lane Grose Vale DA0476/14	Applicant	Appeal against Council's refusal	Delegated (Officer) refusal. At appeal, Consent Orders entered into by Council.	Upheld	-	-	-	-	35,104	12,810
003921	HCC & Marshall v Basscave P/L LEC 11052/14 & LEC 11053/14 1 Powells Lane & 106 Ridges Lane Richmond Lowlands DA0429/14 & DA 0430/14	Applicant	Appeal against deemed refusal	At appeal Consent Orders entered into by Council.	Upheld	-	-	-	-	8	10,813
003930	Turner & Whan v Croft Manor Farm and anors LEC 40304/15 67 Browns Road Kurrajong DA0183/14 (challenge to consent)	Turner & Whan	Initiated by another party (Class 4)	Applicant decision not to proceed.	Discontinued	-	-	-	-	4,927	6,044
003960	HCC v North Richmond Joint Venture LEC 10213/15 & LEC 10214/15 98 Grose Vale Road North Richmond DA0451/2014 & DA0452/14	Applicant	Appeal against deemed refusal	Approved by Officer. Appeal to LEC unnecessary.	Discontinued	-	-	-	-	-	4,428
004015	HCC v Ogg LEC 10381/15 128 Grose River Rd Grose Wold DA 0716/14	Applicant	Appeal against deemed refusal	At appeal Consent Orders entered into by Council.	Upheld	-	-	-	-	27,140	1,963
004035	HCC v PRIM P/L LEC LEC 154471/16 formerly LEC 10790/15 66 Wattle Cres Glossodia DA0591/14	Applicant	Appeal against Council's refusal	Officer recommended refusal, elected Council refused the DA.	Dismissed	-	-	-	-	23,901	-
004073	HCC v Oneten LEC 154235/16 formerly LEC 11008/15 34 Oakford Place Grose Wold DA0239/15	Applicant	Appeal against Council's refusal	Delegated (Officer) refusal. At appeal, Consent Orders entered into by Council.	Upheld	-	-	-	-	20,047	-
004112	HCC v Bentley & Bacic LEC154259/16 formerly LEC 11007/15 317 Grose Vale Rd Grose Vale DA0179/15	Applicant	Appeal against Council's refusal	Delegated (Officer) refusal. At appeal, Consent Orders entered into by Council.	Upheld	-	-	-	-	16,054	-
004157	HCC v Planet Warriewood LEC 10959/15 8 Groves Ave Mulgrave DA0703/13	Applicant	Appeal against JRPP refusal	JRPP refusal. At appeal, Consent Orders entered into by Council.	Upheld	-	-	-	-	31,979	-
004203	HCC v PRIM P/L LEC 162961/16 formerly LEC 10220/16 67 Kurrajong Road Kurrajong DA0830/15	Applicant	Appeal against Council's refusal	Officer recommended refusal, elected Council refused the DA. At appeal, Consent Orders entered into by Council.	Upheld	-	-	-	-	2,198	-
004204	HCC v PRIM P/L LEC 163076/16 formerly LEC 10221/16 67 Kurrajong Road KURRAJONG DA0831/15	Applicant	Appeal against Council's refusal	Applicant decision not to proceed	Discontinued	-	-	-	-	2,628	-
004205	HCC v PRIM P/L LEC 158902/16 67 Kurrajong Kurrajong (Unauthorised Vegetation Removal)	Council	Council initiated- illegal works	Resolved as part of DA0830/15 appeal	Interim Order not proceeded with	-	-	-	-	10,932	-
003847	Marshall Rural v HCC & anors LEC 160454/16 formerly LEC 40644/15 1 Powells Lane & 106 Ridges Lane Richmond Lowlands (Challenge to validity of DA156/15 and DA157/15)	Marshall Rural P/L	Initiated by other party (Class 4)	DA - Officer recommended approval, elected Council approved the DAs. Both consents declared void.	Upheld	-	-	-	31,818	-	-
004279	HCC v GMR Schembri Pty Ltd LEC 151609/16 formerly LEC 10085/16 727 George Street South Windsor DA0681/15	Applicant	Appeal against deemed refusal	At appeal, Consent Orders entered into by Council.	Upheld	-	-	-	6,417	-	-
004280	HCC v PRIM Pty Ltd LEC 199641/16 S56A Appeal. 66 Wattle Cres Glossodia DA0591/14	Applicant	Appeal against LEC Court decision	Applicant decision not to proceed	Discontinued	-	-	-	3,424	-	-
004281	HCC v PRIM P/L LEC 162961/16 formerly LEC 10220/16 67 Kurrajong Road Kurrajong DA0830/15	Applicant	Appeal against Council's refusal	Officer recommended refusal, elected Council refused the DA. At appeal, Consent Orders entered into by Council.	Upheld	-	-	14,275	96,714	-	-
004282	HCC v PRIM P/L LEC 163076/16 formerly LEC 10221/16 67 Kurrajong Road Kurrajong DA0831/15	Applicant	Appeal against Council's refusal	Applicant decision not to proceed.	Discontinued	-	-	2,070	2,205	-	-
004295	Samuel v HCC LEC 40453/16 (case 165394) Remedy of breach of Section 309 POEO Act	Samuel	Initiated by other party (Class 4)	Register sought was provided.	Discontinued	-	-	-	7,719	-	-
004310	HCC v GMR Schembri Pty Ltd LEC 151609/16 formerly LEC 10085/16 727 George Street South Windsor DA0681/15	Applicant	Appeal against deemed refusal	At appeal, Consent Orders entered into by Council.	Upheld	-	-	-	1,801	-	-
004311	Marshall Rural v HCC & anors LEC 160454/16 formerly LEC 40644/15 1 Powells Lane & 106 Ridges Lane Richmond Lowlands (costs hearing)	Marshall Rural P/L	Initiated by other party (Class 4)	N/A	Upheld	-	-	-	7,870	-	-
004312	HCC v BD NSW (MR) Projects LEC 271451/16 to LEC 271460/16 86 Arthur Phillip Drive North Richmond DA094/16 to DA104/16 inclusive	Applicant	Appeal against deemed refusal	Officer recommended approval, elected Council approved the DAs. Appeal to LEC unnecessary.	Discontinued	-	-	-	2,997	-	-
004313	HCC v PRIM P/L LEC 162961/16 formerly LEC 10220/16 67 Kurrajong Road Kurrajong DA0830/15	Applicant	Appeal against Council's refusal	Officer recommended refusal, elected Council refused the DA. At appeal, Consent Orders entered into by Council.	Upheld	-	-	(2,372)	6,020	-	-
004454	Marshall Rural P/L v Basscave & anors LEC 169851/17 1 Powells Lane & 106 Ridges Lane Richmond Lowlands (Development without consent)	Marshall Rural P/L	Initiated by other party (Class 4)	N/A	Dismissed in part/Declarations and orders made	-	-	1,210	4,986	-	-
004471	HCC v AM Forsstrom LEC 330088/16 6 Lieutenant Bowen Road Bowen Mountain (Development without consent)	Applicant	Appeal against Order to demolish structure	Applicant decision not to proceed-logged a Building Certificate Application.	Discontinued	-	-	-	7,392	-	-
004523	HCC v Pomeroy LEC 192890/17 - 179 Windsor Street Richmond DA0123/17	Applicant	Appeal against Council's refusal	Officer recommended refusal, elected Council refused the DA. At appeal, Consent Orders entered into by Council.	Upheld	-	2,745	39,132	-	-	-
004543	HCC v Creel LEC 264023/17 and others 607 Settlers Rd Lower Macdonald DA020/17 (incorporates 3 additional discontinued appeals for same address)	Applicant	Appeal against deemed refusal	At appeal Consent Orders entered into by Council.	Upheld	-	8,815	15,895	-	-	-
004552	Marshall Rural v Minister for Planning & anors LEC 169852/17 - Powells/Ridge Lane (Challenge to validity of LEP amendment)	Marshall Rural P/L	Initiated by other party (Class 4)	Applicant decision not to proceed.	Discontinued	-	-	5,062	-	-	-
004553	HCC v Constantine LEC 292737/17 153 Coromandel Rd Ebenezer (Unauthorised Works & Use)	Applicant	Appeal against Order to demolish works	Council revoked Order.	Discontinued	-	-	4,347	-	-	-
004567	HCC v INA Operations LEC 345848/17 213-227 Commercial Road Vineyard DA0685/16	Applicant	Appeal against JRPP refusal	Officer recommended approval. JRPP refused the DA.	Dismissed	-	20,054	18,485	-	-	-
004568	HCC v Sorbello LEC 356019/17 28 Fitzroy Lane Windsor Downs DA0018/17	Applicant	Appeal against Council's refusal	Officer recommended refusal. At appeal, Consent Orders entered into by Council.	Upheld	-	-	13,511	-	-	-

Project	Description	Appellant	Reason	DA Notes if applicable	Appeal Outcome	2019/20 Actual	2018/19 Actual	2017/18 Actual	2016/17 Actual	2015/16 Actual	2014/15 Actual
004572	HCC v Isaac Property Developments LEC 327958/17 752 George Street South Windsor DA078/17	Applicant	Appeal against deemed refusal	At appeal, Consent Orders entered into by Council.	Upheld	(7,500)	4,539	9,617	-	-	-
004703	HCC v Masterman LEC 322823/17 - 584 Lower Colo Road Lower Portland DA0860/16 & S82A0011/17	Applicant	Appeal against Council's refusal (of the DA)	At appeal, Consent Orders entered into by Council.	Upheld	-	-	4,654	-	-	-
005020	HCC v Kara-Ali & Sthn Chariot Stud LEC 197129/18 1855 Putty Road Colo (Development without consent)	Council	Council initiated - illegal works	N/A	Orders issued, convicted and fined	13,544	113,741	-	-	-	-
005031	HCC v Planet Warriewood P/L LEC 168005/18 8 Groves Ave Mulgrave DA0703/13 & S960029/19	Applicant	Modification application lodged directly with LEC	No officer decision required.	Modification application approved	-	24,700	-	-	-	-
005045	HCC v Budeja LEC 273827/18 1182 Kurmond Rd Kurmond DA0027/18	Applicant	Appeal against deemed refusal	At appeal, Consent Orders entered into by Council.	Upheld	-	9,975	-	-	-	-
005046	HCC v Trevet Property LEC 293128/18 78 Menin Rd Oakville DA0314/18	Applicant	Appeal against deemed refusal	Applicant decision not to proceed.	Discontinued	-	2,611	-	-	-	-
005052	HCC v Trevet Property LEC 174310/18 -56 Harkness Rd Oakville DA0119/18	Applicant	Appeal against deemed refusal	Applicant decision not to proceed.	Discontinued	-	26,722	-	-	-	-
005053	HCC v Freehold Trevet Development No 1 LEC 174321/18 274 Commercial Rd Vineyard DA0133/18	Applicant	Appeal against deemed refusal	Applicant decision not to proceed.	Discontinued	-	40,417	-	-	-	-
005054	HCC v Flaherty LEC 179643/18 86 Arthur Phillip Dr North Richmond DA0412/17	Applicant	Appeal against deemed refusal	Applicant decision not to proceed.	Discontinued	-	2,791	-	-	-	-
005240	HCC v Johnson Property Group LEC 70674/19 43 Bootles Lane Pitt Town DA0474/18	Applicant	Appeal against deemed refusal	At appeal, Consent Orders entered into by Council.	Upheld	17,423	2,579	-	-	-	-
005246	HCC v Kavanagh LEC 78751/19 30 Bulga St St Albans DA0187/17	Applicant	Appeal against Council's refusal	Delegate (Officer) refusal.	Dismissed	61,388	3,740	-	-	-	-
005253	HCC v PRJM P/L LEC 71321/19 66 Wattle Cres Glossodia DA0560/18	Applicant	Appeal against deemed refusal	Court agreed to refuse.	Dismissed	83,251	8,444	-	-	-	-
005257	HCC v Vella LEC 32980/19 163 Glenidol Rd Oakville DA0028/18	Applicant	Appeal against Council's refusal	Delegate (Officer) refusal.	Dismissed	17,793	2,110	-	-	-	-
005258	HCC v Vella LEC 54064/19 163 Glenidol Rd Oakville BC0057/18	Applicant	Appeal against Council's refusal	Delegate (Officer) refusal.	Dismissed	1,224	1,909	-	-	-	-
005265	HCC v Jaloussis LEC 108736/19 88 Godalla Road Freemans Reach DA0286/18	Applicant	Appeal against Council's refusal	Applicant decision not to proceed.	Discontinued	-	778	-	-	-	-
005266	HCC v Goodridge & Goodridge LEC 91138/19 292 Fairey Road South Windsor DA0422/18	Applicant	Appeal against deemed refusal	Applicant decision not to proceed.	Discontinued	469	3,234	-	-	-	-
005279	HCC v Hatt Pty Ltd & anors trading as Redbank Communities LEC 89309/19 86 Arthur Phillip Drive North Richmond DA0334/18	Applicant	Appeal against deemed refusal	At appeal, Consent Orders entered into by Council.	Upheld	8,186	3,511	-	-	-	-
005291	HCC v Flaherty LEC 200819/19 382 Grose Vale Rd North Richmond DA0498/18	Applicant	Appeal against deemed refusal	Council is prepared to enter into Consent Orders, however Heritage Council contentions to be resolved.	Current	13,805	-	-	-	-	-
005422	HCC v The Clarendon Pub P/L LEC 391831/19 244 Hawkesbury Valley Way Clarendon DA0155/19	Applicant	Appeal against deemed refusal	Delegated (Officer) approval. Appeal to LEC unnecessary.	Discontinued	2,695	-	-	-	-	-
005430	HCC v Iontaobhas P/L & anors LEC 365266/19 35 Hadden Ridge Road Wilberforce DA0308/19	Applicant	Appeal against deemed refusal	N/A	Current	32,432	-	-	-	-	-
005431	HCC v Iontaobhas P/L & anors LEC 365226/19 35 Hadden Ridge Road Wilberforce DA0307/19	Applicant	Appeal against deemed refusal	N/A	Current	3,170	-	-	-	-	-
005444	HCC v Succar LEC 88676/20 formerly LEC 38168/20 84 Livingston Street Windsor (Development without consent)	Applicant	Appeal against Order to demolish works	N/A	Current	8,132	-	-	-	-	-
005498	HCC v Victor Micallef LEC 81025/20 542 Windsor Road Vineyard DA540/19	Applicant	Appeal against deemed refusal	N/A	Current	3,295	-	-	-	-	-
005499	HCC v MS Windsor P/L LEC 85835/20 197 Windsor Street Richmond DA0547/19	Applicant	Appeal against deemed refusal	N/A	Current	3,593	-	-	-	-	-
00030	HCC v John Camilleri LEC114195/20 15 Box Avenue Wilberforce S96091/19	Applicant	Appeal against deemed refusal	Delegated (Officer) approval. Appeal to LEC unnecessary.	Discontinued	1,770	-	-	-	-	-
						264,699	283,415	125,886	179,363	195,801	128,416
005049	Hargraves - Impact of Stormwater on 70 Wells St, Pitt Town (Legal Advice and modelling) PT50003/17	Applicant	Legal Advice and Modelling-not an appeal matter	Due diligence in relation to Part 5 determination.	N/A	1,121	76,409	-	-	-	1,980
						265,790	359,824	128,886	179,363	195,801	130,396

Appendix 2 - Reconciliation to Annual Financial Statements

Legal Matters for 2014/2015	
Total included in Detailed Report - Legal Costs	254,735
Reconciliation to Financial Statements	
Amount reported above in '000's	255
Amount reported in Financial Statements	466
Variance	-211
Legal cost recovery included in income in Financial Statements	62
Costs associated with legal matters, captured as other operating expenditure in Income Statement	-43
Costs accounted for as capital expenditure, captured in Infrastructure, Property, Plant and Equipment	-4
Legal Expenses: Debt Recovery - not included as a Legal Matter, as provided by Debt Recovery Agent	197
Remaining Variance	0
Legal Matters for 2015/2016	
Total included in Detailed Report - Legal Costs	366,258
Reconciliation to Financial Statements	
Amount reported above in '000's	366
Amount reported in Financial Statements	507
Variance	-141
Legal cost recovery included in income in Financial Statements	1
Costs associated with legal matters, captured as other operating expenditure in Income Statement	-3
Costs reported as legal costs in Financial Statements, that related to other operating expenditure	5
Costs accounted for as capital expenditure, captured in Infrastructure, Property, Plant and Equipment	-19
Legal Expenses: Debt Recovery - not included as a Legal Matter, as provided by Debt Recovery Agent	157
Remaining Variance	0
Legal Matters for 2016/2017	
Total included in Detailed Report - Legal Costs	386,639
Reconciliation to Financial Statements	
Amount reported above in '000's	387
Amount reported in Financial Statements	504
Variance	-117
Legal cost recovery included in income in Financial Statements	5
Costs associated with legal matters, captured as other operating expenditure in Income Statement	-32
Costs reported as legal costs in Financial Statements, that related to other operating expenditure	95
Costs accounted for as capital expenditure, captured in Infrastructure, Property, Plant and Equipment	-19
Legal Expenses: Debt Recovery - not included as a Legal Matter, as provided by Debt Recovery Agent	68
Remaining Variance	0
Legal Matters for 2017/2018	
Total included in Detailed Report - Legal Costs	302,741
Reconciliation to Financial Statements	
Amount reported above in '000's	303
Amount reported in Financial Statements	449
Variance	-146
Legal cost recovery included in income in Financial Statements	11
Costs associated with legal matters, captured as other operating expenditure in Income Statement	-7
Costs reported as legal costs in Financial Statements, that related to other operating expenditure	7
Costs accounted for as capital expenditure, captured in Infrastructure, Property, Plant and Equipment	-4
Legal Expenses: Debt Recovery - not included as a Legal Matter, as provided by Debt Recovery Agent	138
Remaining Variance	0
Legal Matters for 2018/2019	
Total included in Detailed Report - Legal Costs	761,349
Reconciliation to Financial Statements	
Amount reported above in '000's	761
Amount reported in Financial Statements	794
Variance	-33
Costs associated with legal matters, captured as other operating expenditure in Income Statement	-40
Costs reported as legal costs in Financial Statements, that related to other operating expenditure	-11
Costs accounted for as capital expenditure, captured in Infrastructure, Property, Plant and Equipment	-44
Legal Expenses: Debt Recovery - not included as a Legal Matter, as provided by Debt Recovery Agent	119
Remaining Variance (rounding)	-8
Legal Matters for 2019/2020	
Matter	Amount
Total included in Detailed Report - Legal Costs	682,671
Reconciliation to Financial Statements	
Amount reported above in '000's	683
Amount reported in Financial Statements	678
Variance	5
Costs associated with legal matters, captured as other operating expenditure in Income Statement	0
Costs reported as legal costs in Financial Statements, that related to other operating expenditure	0
Costs accounted for as capital expenditure, captured in Infrastructure, Property, Plant and Equipment	-44
Legal Expenses: Debt Recovery - not included as a Legal Matter, as provided by Debt Recovery Agent	39
Remaining Variance (rounding)	0

Appendix 3 – Code of Conduct matters

Period	Number of Code of Conduct Complaints Received against Councillors and General Manager	Referred to Another Agency	Dealt with by General Manager or Mayor	Referred to Conduct Reviewers	Conduct Reviewer Findings	Amount Spent including Staff costs (excl. GST)
1 September 2014 to 31 August 2015	5	1	2	2	1. • Breach of Code of Conduct found. • Councillor counselled. 2. • Discontinued investigation. • Take no further action.	\$11,090
1 September 2015 to 31 August 2016	0	0	0	0	Not applicable.	\$3,878
1 September 2016 to 31 August 2017	6	2	1	3	1. • Did not breach Code of Conduct. • General Manager to receive and note. 2. • Take no action. 3. • Take no action.	\$13,051
1 September 2017 to 31 August 2018	10	0	3	7	1. • Take no action. 2. • Take no action. 3. • Take no action. 4. • Take no action. 5. • Not Code of Conduct Complaint. • No further action to be taken. 6. • Not Code of Conduct Complaint. • No further action to be taken. 7. • Not Code of Conduct Complaint. • No further action to be taken.	\$14,820

Period	Number of Code of Conduct Complaints Received against Councillors and General Manager	Referred to Another Agency	Dealt with by General Manager or Mayor	Referred to Conduct Reviewers	Conduct Reviewer Findings	Amount Spent including Staff costs (excl. GST)
1 September 2018 to 31 August 2019	7	1	1	5	<ol style="list-style-type: none"> 1. • Not Code of Conduct Complaint. • No further action to be taken. 2. • Resolved by alternate and appropriate strategies. • Conduct Reviewer explained, counselled and discussed with Councillor. 3. • Resolved by alternate and appropriate strategies. • Conduct Reviewer counselled and discussed with Councillor. 4. • Resolved by alternate and appropriate strategies. • Conduct Reviewer counselled and discussed with Councillor. 5. • Resolved by alternate and appropriate strategies. • Conduct Reviewer met with Councillor. 	\$12,378

Period	Number of Code of Conduct Complaints Received against Councillors and General Manager	Referred to Another Agency	Dealt with by General Manager or Mayor	Referred to Conduct Reviewers	Conduct Reviewer Findings	Amount Spent including Staff costs (excl. GST)
1 September 2019 to 31 August 2020	8 Note: 6 Complaints on going as at 31 August 2020.	2	2	6	1. • Take no action. 2. • Resolved by alternate and appropriate strategies. • Conduct Reviewer discussed with Councillor. 3. • Resolved by alternate and appropriate strategies. • Conduct Reviewer discussed with Councillor. 4. • Resolved by alternate and appropriate strategies. • Conduct Reviewer discussed with Councillor 5. • Resolved by alternate and appropriate strategies. • Conduct Reviewer met with Councillor	\$26,988



ECO LOGICAL AUSTRALIA PTY LTD
ABN 87 096 512 088
www.ecoaus.com.au

Michael Pattison
Land Management Officer Hawkesbury City Council

16SYD 3857

Friday 13th January 2017

Dear Michael,

Re: Desktop Biobank Site Feasibility Assessment for Land owned by Hawkesbury City Council

Eco Logical Australia (ELA) was engaged by Hawkesbury City Council (HCC) to undertake a desktop assessment of Council owned land to provide an indication of the number and types of biodiversity credits (ecosystem credits and species credits) that could be generated from Council reserves. This desktop assessment provides an estimate of the in-perpetuity management costs (credit Part A) to manage these sites as biobank sites and a range of potential credit sale prices based on recent market demand. Recommendations are made for future steps.

Introduction:

Following the introduction of the NSW BioBanking Scheme in 2006, a biodiversity offset market was established whereby landowners (including Councils) are able to register a biobanking agreement on their land and sell the biodiversity credits generated. The sale of the credits provides the resources for the biodiversity management of the land in perpetuity, and subject to market demand, additional returns can also be obtained. The credit sale price includes two components: a Credit Part A (the funds required for in perpetuity management held in the BioBanking Trust Fund) and Credit Part B (the funds returned to the landholder such as site establishment costs and risk or profit margins - subject to prevailing taxation issues including capital tax provisions).

Since the commencement of this project the new *Biodiversity Conservation Bill 2016* has been passed which repeals the *Threatened Species Conservation Act 1997* (TSC Act). The new Act will not become operational until regulations have been adopted which according to the government timeframe will be around July 2017. Although additional detail will be provided in the regulations, the arrangements for the eligibility and management of biobank sites under the TSC Act appear to be fundamentally unchanged under the *Biodiversity Conservation Act* (BC Act) which refers to biobank sites as *biodiversity stewardship sites*.

Of particular relevance to Council is that Section 5.9(2) of the BC Act and section 127F(2) of the TSC Act states that the Minister may enter into a biodiversity stewardship agreement relating to land that is Crown land with a public authority that owns or has the control and management of the land with the consent of the Minister administering the *Crown Lands Act 1989* (CL Act). Accordingly it is inferred that Crown land under the management control of HCC may be eligible as a biodiversity stewardship site to be administered by Council providing there is approval from the Department of Industry – Lands. Although the scope of this desktop assessment covered only Council owned land, initial investigations have identified a number of large vegetated Crown land parcels which Council currently manages. Accordingly, in addition to Council owned land, this assessment includes a brief review of some key council managed Crown land parcels.

Approach and Results:

Identification of potential biobank sites:

ELA used the spatial cadastral and ownership shapefile data provided by Council to identify a subset of land areas for further analysis. Potential biobank sites are referred to as “assessment areas”. The criteria used to identify the assessment areas were:

- greater than 5 ha of mapped remnant vegetation
- Council owned land
- Crown land under council management control

A minimum area of greater than 5 ha of remnant vegetation was chosen because this was regarded to be the minimum size threshold for a viable biobank site and only if the estimated credit sale price relative to the cost of managing the site is high e.g. the credits generated are in demand and can be sold at a price that covers the in perpetuity management costs (such as for an EEC) and the site is intact and unlikely to suffer disturbance (lower management costs). In general the larger the biobank site the lower the management cost per ha due to economies of scale.

Providing the land is owned by the same entity (e.g. Council) a biobank site may comprise of separate parcels of land even if the parcels are not immediately adjacent. Accordingly the assessment areas are made up of one or more land parcels. Some assessment areas include both Council land and Crown land with council management control. For the Council owned land the classification of either operational land or community land under the *Local Government Act 1993* (LG Act) was identified. In accordance with section 12.10 of the *Biobanking Assessment Methodology 2014* (BBAM 2014) the number of credits generated by land may be discounted where there are existing conservation obligations attached to land such as a:

- Plan of Management for community classified land prepared under the LG Act
- Plan of Management authorising a Crown reserve to be used for an additional purpose of conservation under the CL Act

This assessment has discounted the number of credits generated by 22.5% for Council owned land classified as community land but not for Crown land under council management control because it has assumed that the Crown land has not been authorised to be used for an additional conservation purpose through a plan of management.

There are 26 assessment areas comprising of a total of 69 lots. The assessment area details including ownership (Council or the Crown), Lot and DP and street address are provided in **Table 1**. Rows are shaded pink for five assessment areas which comprise only of Council owned land and the operational or community classification is identified. The location of the assessment areas is shown in **Figure 1**.

Table 1: Assessment area details

Assessment Area	Area of vegetation ha	Reserve name	Location	Ownership	Lot and DP details	Classification of Council owned land
1.	5.36	The Driftway Crown Reserve	The Driftway, SOUTH WINDSOR	Crown	Lot 338 DP 752061	-
2.	5.87	Part Bilpin Park	Bells Line Of Road, BILPIN	Crown	Lot 42 DP 751626 Lot 54 DP 751626	-
3.	5.2	Old Cattai Oval	Cattai Road, MARAYLYA	Crown	Lot 279 DP 752050	-
4.	6.85	Part Matheson Park	Mill Road, KURRAJONG	Crown	Lot 331 DP 725699 Lot 332 DP 725699	-
5.	6.96	-	Ti-Tree Place & Sackville Road, WILBERFORCE	Council	Lot 38 DP 261756 Lot 39 DP 261756 Lot 252 DP 1004592	Operational
6.	7.9	West Portland Road Reserve	West Portland Road, LOWER PORTLAND	Crown	Lot 7006 DP 93492	-
7.	9.53	Lower Portland Crown Reserve	Hebron Road & Wheelbarrow Ridge Road, LOWER PORTLAND	Crown	Lot 50 DP 753784 Lot 58 DP 753784 Lot 7007 DP 1053315	-
8.	5.46	-	Wilberforce Road, WILBERFORCE	Council	Lot 22 DP 829589	Operational
9.	11.3	Kent Beach	West Portland Road, SACKVILLE	Crown	Lot 7004 DP 93551	-
10.	11.52	Part Kurrajong Heights Park	Bells Line Of Road & Warks Hill Road, KURRAJONG HEIGHTS	Council & Crown	Lot 10 DP 746825	Community

Assessment Area	Area of vegetation ha	Reserve name	Location	Ownership	Lot and DP details	Classification of Council owned land
					Lot 1 DP 1007671 Lot 7002 DP 1057303 Lot 7007 DP 1059294	
11.	11.61	Kurrajong Heights Park	Bells Line Of Road, KURRAJONG HEIGHTS	Crown	Lot 7017 DP 1059293	-
12.	12.07	Bellbird Hill Reserve	Bells Line Of Road, KURRAJONG HEIGHTS	Council	Lot 10 DP 719776 Lot 1 DP 1172756	Community
13.	10.95	Part Oakville Park	Oakville Road & Old Stock Route Road, OAKVILLE	Crown	Lot 106 DP 752050 Lot 7006 DP 1027993	-
14.	5.56	Berger Road Lake Reserve	Berger Road, SOUTH WINDSOR	Council & Crown	Lot 25 DP 27136 Lot 29 DP 27136 Lot 45 DP 27136 Lot 1 DP 801019 Lot 2 DP 801019 Lot 3 DP 801019 Lot 7302 DP 1154417	Community & Operational
15.	16.84	Turnbulls Hill Crown Reserve	West Portland Road, LOWER PORTLAND	Crown	Lot 181 DP 751656	-
16.	9.14	Part Woodbury Reserve	Golden Valley Drive, Kentucky Drive & Spinks Road	Council	Lot 457 DP 214756 Lot 464 DP 214756 Lot 484 DP 214756 Lot 514 DP 214756	Community & Operational

Assessment Area	Area of vegetation ha	Reserve name	Location	Ownership	Lot and DP details	Classification of Council owned land
17.	20.93	Chain of Ponds	Stannix Park Road, EBENEZER	Crown	Lot 7004 DP 1029117	-
18.	21.12	Charles Kemp Recreational Reserve	Tizzana Road, EBENEZER	Council	Lot 9 DP 881972	Community
19.	32.72	Diamond Hill Drive Reserve & Singletons Reserve	Diamond Hill Drive, KURRAJONG HILLS Mill Road, KURRAJONG	Council & Crown	Lot 41 DP 809616 Lot 285 DP 751649 Lot 286 DP 751649	Community
20.	18.41	Yarramundi Reserve	Springwood Road, AGNES BANKS & YARRAMUNDI	Crown	Lot 57 DP 751660 Lot 90 DP 786549 Lot 7300 DP 1140672	-
21.	54.73	Devils Hole Creek Reserve	Lieutenant Bowen Road, BOWEN MOUNTAIN	Crown	Lot 7303 DP 1141207	-
22.	62.11	Lower Portland Crown Reserve	Wheelbarrow Ridge Road, LOWER PORTLAND	Crown	Lot 45 DP 753784 Lot 65 DP 753784 Lot 7005 DP 1053316	-
23.	62.37	Part Colo Heights Reserve	Putty Road, COLO HEIGHTS	Crown	Lot 1 DP 1134606 Lot 2 DP 1134606 Lot 7002 DP 1055569 Lot 7003 DP 1055569	-
24.	73.46	Part Powell Park	Bells Line Of Road, BILPIN	Crown	Lot 7001 DP 93274 Lot 7002 DP 93274	-

Assessment Area	Area of vegetation ha	Reserve name	Location	Ownership	Lot and DP details	Classification of Council owned land
25.	128.88	Part Unnamed Reserve	Lieutenant Bowen Drive & Lieutenant Bowen Road, BOWEN MOUNTAIN	Council & Crown	Lot 11 DP 261139 Lot 140 DP 205986 Lot 200 DP 206301 Lot 7011 DP 1073187 Lot 7012 DP 1073186 Lot 7013 DP 1073211	Community & Operational
26.	727.68	Part Colo Park & Morans Rock Reserve	Putty Road, COLO & BLAXLANDS RIDGE Lower Colo Road, LOWER PORTLAND	Council & Crown	Lot 1 DP 924097 Lot 32 DP 838454 Lot 74 DP 751656 Lot 158 DP 751656 Lot 182 DP 751656 Lot 7012 DP 93494 Lot 7317 DP 1164885 Lot 7319 DP 1169513	Community

Disclaimer: Information presented has been based off data provided to ELA. Where gaps exist, the 2008 Digital Cadastral Database has been used and may be out of date, or land has been assumed to be owned by Council.

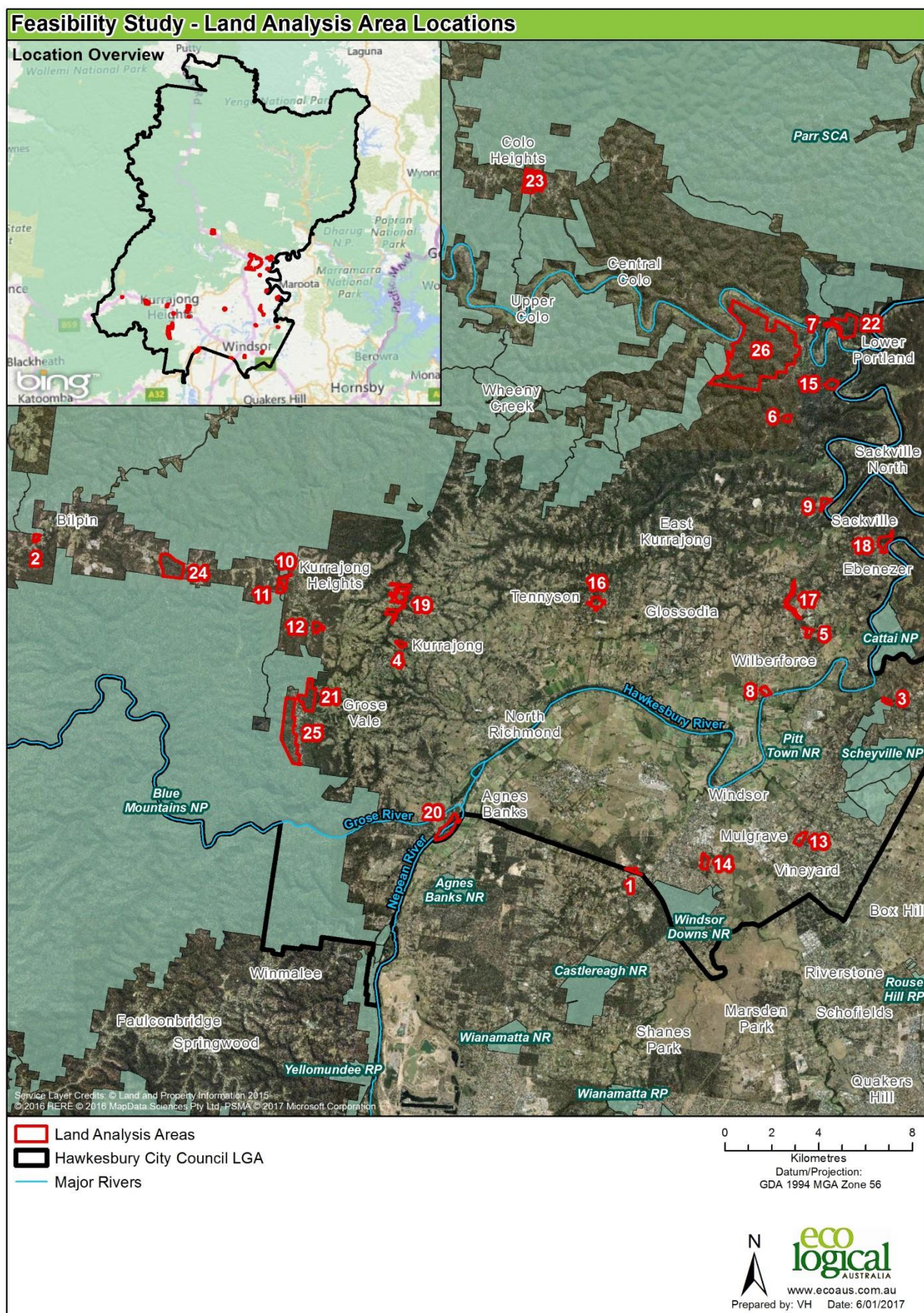


Figure 1: Location of assessment areas

Vegetation Type Correlation:

ELA used existing Council vegetation mapping to correlate each vegetation community to a “best fit” plant community type (PCT) which is further split into a biometric vegetation type (BVT) according to the estimated area of the BVT cleared within the catchment management area (CMA). The entire Hawkesbury local government area occurs within the Hawkesbury Nepean CMA. Correlating the vegetation communities with a best fit BVT was relatively straight forward for vegetation communities which are endangered ecological communities (EECs) however there was more subjectivity for some of the sandstone derived vegetation. Due to the absence of descriptive vegetation community information, for some communities, there was more than one PCT that could be applied. Our ‘best fit’ PCT is therefore a professional judgement based on incomplete data. Field survey will be necessary to confirm PCTs. Eleven correlated PCTs including six EECs were identified. These are provided in **Table 2** below with the EECs shaded pink.

Table 2: Correlated PCTs

PCTID	BVTID	Correlated Plant Community Type	EEC	Percent cleared in CMA	Vegetation Formation	Vegetation Class
724	HN512	Broad-leaved Ironbark - Grey Box - Melaleuca decora grassy open forest on clay/gravel soils of the Cumberland Plain, Sydney Basin Bioregion	Shale/Gravel Transition Forest (SGTF)	75	Dry Sclerophyll Forests (Shrub/grass sub-formation)	Cumberland Dry Sclerophyll Forests
835	HN526	Forest Red Gum - Rough-barked Apple grassy woodland on alluvial flats of the Cumberland Plain, Sydney Basin Bioregion	River-flat eucalypt forest (RF)	95	Forested Wetlands	Coastal Floodplain Wetlands
849	HN528	Grey Box - Forest Red Gum grassy woodland on flats of the Cumberland Plain, Sydney Basin Bioregion	Cumberland Plain Woodland (CPW)	95	Grassy Woodlands	Coastal Valley Grassy Woodlands
877	HN538	Grey Myrtle dry rainforest of the Sydney Basin Bioregion and South East Corner Bioregion	Western Sydney Dry Rainforest (WSDR)	25	Rainforests	Dry Rainforests
1081	HN564	Red Bloodwood - Grey Gum woodland on the edges of the Cumberland Plain, Sydney Basin Bioregion		40	Dry Sclerophyll Forests (Shrubby sub-formation)	Sydney Hinterland Dry Sclerophyll Forests
1083	HN566	Red Bloodwood - scribbly gum heathy woodland on sandstone plateaux of the Sydney Basin Bioregion		25	Dry Sclerophyll Forests (Shrubby sub-formation)	Sydney Coastal Dry Sclerophyll Forests
1181	HN586	Smooth-barked Apple - Red Bloodwood - Sydney Peppermint		20	Dry Sclerophyll Forests	

PCTID	BVTID	Correlated Plant Community Type	EEC	Percent cleared in CMA	Vegetation Formation	Vegetation Class
		heathy open forest on slopes of dry sandstone gullies of western and southern Sydney, Sydney Basin Bioregion			(Shrubby sub-formation)	Sydney Coastal Dry Sclerophyll Forests
1250	HN561	Sydney Peppermint - Smooth-barked Apple - Red Bloodwood shrubby open forest on slopes of moist sandstone gullies, eastern Sydney Basin Bioregion		30	Dry Sclerophyll Forests (Shrubby sub-formation)	Sydney Coastal Dry Sclerophyll Forests
1281	HN604	Turpentine - Grey Ironbark open forest on shale in the lower Blue Mountains, Sydney Basin Bioregion	Sydney Turpentine Ironbark Forest (STIF)	90	Wet Sclerophyll Forests (Grassy sub-formation)	Northern Hinterland Wet Sclerophyll Forests
1327	HN612	Yellow Bloodwood - ironbark shrubby woodland of the dry hinterland of the Central Coast, Sydney Basin Bioregion		30	Dry Sclerophyll Forests (Shrubby sub-formation)	Sydney Hinterland Dry Sclerophyll Forests
1395	HN556	Narrow-leaved Ironbark - Broad-leaved Ironbark - Grey Gum open forest of the edges of the Cumberland Plain, Sydney Basin Bioregion	Shale Sandstone Transition Forest (SSTF)	80	Grassy Woodlands	Coastal Valley Grassy Woodlands

Estimating the number of ecosystem credits generated, in perpetuity management costs and credit sale prices

The number of ecosystem credits generated for each assessment area has been estimated at 10 credits per ha except where there is a strategic location score of 18 or 15 (being a riparian buffer of a higher order stream or estuarine area) occurring on the site, in which case 12 credits per ha have been estimated (Appendix 6 BBAM 2014). It has been assumed that all vegetation is in moderate to good condition. As discussed above, a 22.5% credit discount rate has been applied to the number of credits generated from Council owned land classified as community land due to the existing obligations under the LG Act to manage the land for its biodiversity values.

A very broad indicative estimate has been provided in **Table 3** for the in perpetuity management costs (Credit Part A) based on the area (ha) of the potential biobank site. As mentioned above, smaller sites are significantly more expensive to manage in terms of administrative costs and more potential deterioration to biodiversity values such as increased edge effects, fragmentation and historical disturbance. The costs provided are conservative and may be higher. A more accurate estimate would require a site inspection, discussion with Council land managers and the use of the Office of Environment and Heritage (OEH) 'in perpetuity cost of management spreadsheet' otherwise known as the minimum Trust Fund Deposit (TFD) spreadsheet. The estimates in **Table 3** are based on ELA's experience with calculating management costs for biobank sites in a range of sizes and public registers on the OEH biobanking website which lists the size and minimum TFD for biobanking agreements.

Table 3: Conservative estimates for indicative in perpetuity management costs (Part A)

Assessment area size (ha)	Broad indicative estimate of management costs per credit for vegetation in moderate to good condition
5 – 10	\$12,000
10 – 20	\$7,000
20 – 70	\$5,000
> 70	\$3,000

Indicative credit sale prices for each BVT have been estimated in **Table 4**. These estimates are based on information from public registers on the OEH biobanking website which provides detail on credit transactions and sales and ELA experience with undertaking assessments for clients seeking to:

- offset their development through the purchase and retirement of credits
- establish biobank sites to generate and sell credits.

When purchasing credits a number of factors will affect the price paid. This includes the size of the transaction as in general, the price/ecosystem credit is lower when a larger number of credits is purchased in one transaction, but this is often limited by the landholder's ability to supply the required credit type(s) based on the biodiversity values occurring on their land.

It is considered likely that the demand and price of ecosystem and species credits from the Cumberland Plain region will increase over time in response to development pressures associated with the Western Sydney Airport at Badgerys Creek, Broader Western Sydney Employment Area, and South West Growth Centre. For the ecosystem credits in most demand the prices are around \$7,000 – \$13,000 per credit with prices for the Cumberland Plain Woodland BVTs (HN529) up to \$17,000 per credit. Credits for the endangered Sydney Turpentine Ironbark Forest (HN 604) are very scarce and should there be a demand, likely to fetch a high sale price.

Table 4: Indicative credit sale price

BVT	Plant Community Type	EEC	Estimated credit sale price per credit
HN512	Broad-leaved Ironbark - Grey Box - Melaleuca decora grassy open forest on clay/gravel soils of the Cumberland Plain, Sydney Basin Bioregion	Shale/Gravel Transition Forest (SGTF)	No transaction records on the public register \$5,000
HN526	Forest Red Gum - Rough-barked Apple grassy woodland on alluvial flats of the Cumberland Plain, Sydney Basin Bioregion	River-flat eucalypt forest (RF)	\$10,000
HN528	Grey Box - Forest Red Gum grassy woodland on flats of the Cumberland Plain, Sydney Basin Bioregion	Cumberland Plain Woodland (CPW)	\$16,000
HN538	Grey Myrtle dry rainforest of the Sydney Basin Bioregion and South East Corner Bioregion	Western Sydney Dry Rainforest (WSDF)	\$5,000
HN564	Red Bloodwood - Grey Gum woodland on the edges of the Cumberland Plain, Sydney Basin Bioregion		\$5,000
HN566	Red Bloodwood - scribbly gum heathy woodland on sandstone plateaux of the Sydney Basin Bioregion		\$5,000
HN586	Smooth-barked Apple - Red Bloodwood - Sydney Peppermint heathy open forest on slopes of dry sandstone gullies of western and southern Sydney, Sydney Basin Bioregion		\$5,000
HN561	Sydney Peppermint - Smooth-barked Apple - Red Bloodwood shrubby open forest on slopes of moist sandstone gullies, eastern Sydney Basin Bioregion		\$5,000
HN604	Turpentine - Grey Ironbark open forest on shale in the lower Blue Mountains, Sydney Basin Bioregion	Sydney Turpentine Ironbark Forest (STIF)	\$31,500
HN612	Yellow Bloodwood - ironbark shrubby woodland of the dry hinterland of the Central Coast, Sydney Basin Bioregion		\$5,000
HN556	Narrow-leaved Ironbark - Broad-leaved Ironbark - Grey Gum open forest of the edges of the Cumberland Plain, Sydney Basin Bioregion	Shale Sandstone Transition Forest (SSTF)	\$8,000

Estimates of the number of ecosystem credits that could be generated from each assessment area, a broad estimate of the in perpetuity management costs and credits prices for the entire potential biobank site and the resulting Part B funds returned to the landowner are provided in **Table 5**. Rows shaded in pink identify those sites where the estimated credit sale price would cover or exceed the in perpetuity management costs indicating that these sites may be further considered as a potential biobank site.

A discount of 22.5% has been applied to Council owned land classified as community land under the LG Act.

Table 5: Estimate of ecosystem credits generated, management costs and likely returns for each potential biobank site

Assessment Area no	Reserve Name	Ownership (Council, Crown or both)	Area ha	Ecosystem credits generated	Estimated management costs	Estimated credit sales	Estimated part B
1.	The Driftway Crown Reserve	Crown	5.36	HN526 – 40 HN528 – 14	\$648,000	\$624,000	-\$24,000
2.	Part Bilpin Park	Crown	5.87	HN586 – 2 HN604 – 4 HN612 – 53	\$708,000	\$401,000	-\$307,000
3.	Old Cattai Oval	Crown	5.2	HN528 – 62	\$744,000	\$992,000	\$248,000
4.	Part Matheson Park	Crown	6.85	HN556 – 69	\$828,000	\$552,000	-\$276,000
5.	-	Council	6.96	HN526 – 6 HN528 – 51 HN556 – 13	\$840,000	\$980,000	\$140,000
6.	West Portland Road Reserve	Crown	7.9	HN586 – 22 HN612 – 57	\$948,000	\$395,000	-\$553,000
7.	Lower Portland Crown Reserve	Crown	9.53	HN586 – 96 HN612 – 18	\$1,368,000	\$570,000	-\$798,000
8.	-	Council	5.46	HN526 – 63 HN528 – 3	\$792,000	\$678,000	-\$114,000
9.	Kent Beach	Crown	11.3	HN566 – 113 HN586 – 22 HN556 – 1	\$952,000	\$683,000	-\$269,000
10.	Part Kurrajong Heights Park	Council & Crown	11.53	HN566 – 8 HN612 – 106	\$798,000	\$570,000	-\$228,000
11.	Kurrajong Heights Park	Crown	11.61	HN566 – 5 HN586 – 66	\$812,000	\$580,000	-\$232,000

Assessment Area no	Reserve Name	Ownership (Council, Crown or both)	Area ha	Ecosystem credits generated	Estimated management costs	Estimated credit sales	Estimated part B
				HN612 – 45			
12.	Bellbird Hill Reserve	Council	12.07	HN604 – 93	\$651,000	\$2,929,500	\$2,278,500
13.	Part Oakville Park	Crown	10.95	HN512 – 22 HN528 – 87	\$763,000	\$1,502,000	\$739,000
14.	Berger Road Lake Reserve	Council & Crown	5.56	HN512 – 49 HN526 – 2	\$612,000	\$265,000	-\$347,000
15.	Turnbulls Hill Crown Reserve	Crown	16.84	HN586 – 106 HN612 – 96	\$1,414,000	\$1,010,000	-\$404,000
16.	Part Woodbury Reserve	Council	9.14	HN528 – 44 HN586 – 18 HN556 – 9	\$852,000	\$866,000	\$14,000
17.	Chain of Ponds	Crown	20.93	HN526 – 117 HN586 – 19 HN556 – 73	\$1,045,000	\$1,849,000	\$804,000
18.	Charles Kemp Recreation al Reserve	Council	21.12	HN538 – 22 HN566 – 84 HN612 – 78 HN556 – 13	\$985,000	\$1,024,000	\$39,000
19.	Diamond Hill Drive Reserve & Singletons Reserve	Council & Crown	32.72	HN526 – 12 HN586 – 139 HN556 – 184	\$1,675,000	\$2,287,000	\$612,000
20.	Yarramundi Reserve	Crown	18.41	HN526 – 221	\$1,547,000	\$2,210,000	\$663,000
21.	Devils Hole Creek Reserve	Crown	54.73	HN586 – 115 HN604 – 427 HN612 – 5	\$2,735,000	\$14,050,500	\$11,315,500
22.	Lower Portland	Crown	62.11	HN586 – 265 HN612 – 356	\$3,105,000	\$3,105,000	\$0

Assessment Area no	Reserve Name	Ownership (Council, Crown or both)	Area ha	Ecosystem credits generated	Estimated management costs	Estimated credit sales	Estimated part B
	Crown Reserve						
23.	Part Colo Heights Reserve	Crown	62.37	HN566 – 89 HN586 – 461 HN612 – 74	\$3,120,000	\$3,120,000	\$0
24.	Part Powell Park	Crown	73.46	HN586 – 169 HN612 – 565	\$2,202,000	\$3,670,000	\$1,468,000
25.	Part Unnamed Reserve	Council & Crown	128.88	HN564 – 10 HN566 – 69 HN586 – 667 HN604 – 7 HN612 - 534	\$3,861,000	\$6,620,500	\$2,759,500
26.	Part Colo Park & Morans Rock Reserve	Council & Crown	727.68	HN564 – 562 HN586 – 2876 HN561 – 21 HN612 – 5271	\$26,190,000	\$43,650,000	\$17,460,000

Species Credits

Wildlife Atlas records dating back to the previous 20 years were checked for records of threatened species that are species credit species (all threatened flora species and approximately half of all threatened fauna species) within 500 metres of each assessment area. The results are presented in **Table 6**.

Without a site inspection or accurately mapped known habitat, the quantum of the species credits present on the potential biobank site is not possible to estimate. However as a guide, approximately 7.1 species credits may be generated per threatened plant individual or ha of habitat for threatened fauna.

Ecosystem and species credits are calculated and scaled in different ways by the methodology, and consequently the price of most species credits would be expected to be lower than for ecosystem credits. However, there can be notable exceptions, such as has occurred for Green and Golden Bell Frog. Species credits from the Cumberland Plain can fetch prices of \$250 - \$500/credit

Table 6: Species credit species records within 500m of each assessment area

Assessment Area no	Reserve Name	Ownership	Area ha	Species credit species within 500m
2	Part Bilpin Park	Crown	5.87	<i>Myotis macropus</i> (Southern Myotis)- note breeding habitat only
3	Old Cattai Oval	Crown	5.2	<i>Myotis macropus</i> (Southern Myotis)- note breeding habitat only
4	Part Matheson Park	Crown	6.85	<i>Leucopogon fletcheri</i> subsp. <i>fletcheri</i>
5	-	Council	6.96	<i>Dillwynia tenuifolia</i> <i>Pultenaea parviflora</i>
7	Lower Portland Crown Reserve	Crown	9.53	<i>Dillwynia tenuifolia</i> <i>Phascolarctos cinereus</i> (Koala)
8	-	Council	5.46	<i>Petaurus norfolcensis</i> (Squirrel Glider) <i>Pseudophryne australis</i> (Red-crowned Toadlet)
11	Kurrajong Heights Park	Crown	11.61	<i>Zieria involucreata</i>
12	Bellbird Hill Reserve	Council	12.07	<i>Phascolarctos cinereus</i> (Koala)
13	Part Oakville Park	Crown	10.95	<i>Acacia pubescens</i> (Downy Wattle) <i>Dillwynia tenuifolia</i> <i>Pultenaea parviflora</i>
17	Chain of Ponds	Crown	20.93	<i>Dillwynia tenuifolia</i> <i>Pultenaea parviflora</i> <i>Meridolum corneovirens</i> (Cumberland Plain Land Snail) <i>Myotis macropus</i> (Southern Myotis)
19	Diamond Hill Drive Reserve & Singletons Reserve	Council & Crown	32.72	<i>Phascolarctos cinereus</i> (Koala)

Assessment Area no	Reserve Name	Ownership	Area ha	Species credit species within 500m
20	Yarramundi Reserve	Crown	18.41	<i>Dillwynia tenuifolia</i> <i>Myotis macropus</i> (Southern Myotis)
21	Devils Hole Creek Reserve	Crown	54.73	<i>Grammitis stenophylla</i> (Narrow-leaf Finger Fern)
22	Lower Portland Crown Reserve	Crown	62.11	<i>Keraudrenia corollata</i> var. <i>denticulate</i> in the Hawkesbury local government area <i>Petaurus norfolcensis</i> (Squirrel Glider) <i>Phascolarctos cinereus</i> (Koala)
23	Part Colo Heights Reserve	Crown	62.37	<i>Phascolarctos cinereus</i> (Koala)
24	Part Powell Park	Crown	73.46	<i>Phascolarctos cinereus</i> (Koala)
25	Part Unnamed Reserve	Council & Crown	128.88	<i>Grammitis stenophylla</i> (Narrow-leaf Finger Fern) <i>Pseudophryne australis</i> (Red-crowned Toadlet)
26	Part Colo Park & Morans Rock Reserve	Council & Crown	727.68	<i>Acacia bynoeana</i> (Bynoe's Wattle) <i>Asterolasia elegans</i> <i>Dillwynia tenuifolia</i> <i>Phascolarctos cinereus</i> (Koala) <i>Pseudophryne australis</i> (Red-crowned Toadlet)

Discussion and recommendations:

The results in **Table 5** indicate that due to high management costs many of the smaller sized assessment areas i.e. sites of < 20 ha are not considered financially viable options for establishing biobank sites. For those potentially financially viable sites (i.e. where the estimated credit sale price would cover or exceed the in perpetuity management costs) which are under 20 ha, careful consideration should be given to the likely in perpetuity management costs i.e. existing and ongoing disturbance to biodiversity values as this assessment has taken a conservative approach to estimating in perpetuity costs.

It is assumed that because of the likely time consuming and uncertain negotiation outcomes regarding options to biobank council managed Crown land, that Council would prioritise consideration of Council owned land as potential biobank sites. However, most of the larger most financially viable sites are Crown land with council management control (Chain of Ponds 17, Yarramundi Reserve 20, Devils Hole Creek Reserve 21, Lower Portland Crown Reserve 22, Colo Heights Reserve 23, Powell Park 24) or a mixture of both Crown and Council land (Diamond Hill Drive Reserve & Singletons Reserve 19, assessment area 25 and Colo Park & Morans Rock Reserve 26).

The very high estimated credit price for the endangered Sydney Turpentine Ironbark Forest vegetation HN604 (\$31,500/credit) significantly increases the financial viability of the Council reserve Bellbird Hill and Crown reserve Devils Hole Creek Reserve.

Four Council owned assessment areas shown in **Table 7** should be given further consideration as potential biobank sites. These areas range in size from 6.96 ha to 21.12 ha. Of particular interest is Bellbird Hill (assessment area 12) which is comprised entirely of the mapped vegetation community Sydney Turpentine Ironbark Forest; the sale of credits for this vegetation community could provide Council with a substantial financial gain in addition to covering the in perpetuity management costs. Further consideration could also be given to areas which are a mixture of Council and Crown land where the proportion of Council owned land is relatively large, or if initial negotiations with the Crown about biobanking this land are generally supportive. Assessment areas 5 and 12 (Bellbird Hill Reserve) may also provide habitat for the species credit species *Dillwynia tenuifolia*, *Pultenaea parviflora* and Koala (**Table 6**) which are likely to have high market demand.

Table 7: Council owned land recommended for further consideration as proposed biobank sites

Assessment Area no	Reserve Name	Ownership (Council, Crown or both)	Area ha	Ecosystem credits generated	Estimated management costs	Estimated credit sales	Estimated part B
5	-	Council	6.96	HN526 – 6 HN528 – 51 HN556 – 13	\$840,000	\$980,000	\$140,000
12	Bellbird Hill Reserve	Council	12.07	HN604 – 93	\$651,000	\$2,929,500	\$2,278,500
16	Part Woodbury Reserve	Council	9.14	HN528 – 44 HN586 – 18 HN556 – 9	\$852,000	\$866,000	\$14,000

Assessment Area no	Reserve Name	Ownership (Council, Crown or both)	Area ha	Ecosystem credits generated	Estimated management costs	Estimated credit sales	Estimated part B
18	Charles Kemp Recreation al Reserve	Council	21.12	HN538 – 22 HN566 – 84 HN612 – 78 HN556 – 13	\$985,000	\$1,024,000	\$39,000

It is recommended that the type, extent and condition of the vegetation on the four sites be validated during a rapid site assessment and following the validation that Council register all potential credits generated on the OEH Biobanking website Expression of Interest register. Registering on this EOI places no obligation on Council and will provide Council with an indication of credit demand and confidence moving forward as costs to establish Biobank sites are high (\$20, 000 - \$34,000 per site) and can take 6 to 12 months to complete.

The passing of the Biodiversity Conservation Bill in November 2016 will lead to changes to the BioBanking Assessment Methodology and credit calculator. These changes may include changes to 'strategic locations' and 'averted loss', which will have implications for the number of credits that will be generated by biobank sites.

Yours sincerely,



Jennie Powell

Senior Consultant and Accredited BioBanking Assessor



Level 3
101 Sussex Street
Sydney NSW 2000
t: (02) 9259 3800

Date 28 April 2020

Our ref: 20SYD/15893_v2

Michael Pattison

Land Management Officer
Hawkesbury City Council

Dear Michael,

Re Desktop Biodiversity Stewardship Site Assessment for land owned by Hawkesbury City Council

In 2017 Eco Logical Australia (ELA) was engaged by Hawkesbury City Council (HCC) to undertake a desktop assessment of Council owned land to provide an indication of the number and types of biodiversity credits (ecosystem credits and species credits) that could be generated from Council reserves. This estimation was undertaken using data from the previous Biobanking scheme.

In 2020 HCC requested an update to this desktop assessment to align with the Biodiversity Assessment Method under the NSW *Biodiversity Conservation Act 2016*.

This updated desktop assessment provides an estimate of the in-perpetuity management costs (Credit Part A) to manage these sites as Biodiversity Stewardship Sites and a range of potential credit sale prices based on the credit prices in the new Biodiversity Offset Payment Calculator (BOPC) public tool.

Yours Sincerely,

A handwritten signature in blue ink, appearing to read 'N McVicar'.

Nicole McVicar

Senior Ecologist and Accredited BAM Assessor

INTRODUCTION

Following the introduction of the NSW Biobanking Scheme in 2006, a biodiversity offset market was established whereby landowners (including Councils) are able to register a Biobanking agreement on their land and sell the biodiversity credits generated. The sale of the credits provides the resources for the biodiversity management of the land in perpetuity, and subject to market demand, additional returns can also be obtained. The credit sale price includes two components: a Credit Part A (the funds required for in perpetuity management held in the Biobanking Trust Fund) and Credit Part B (the funds returned to the landholder such as site establishment costs and risk or profit margins - subject to prevailing taxation issues including capital tax provisions).

The new *Biodiversity Conservation Act 2016* (BC Act) was passed in 2016 which repealed the *Threatened Species Conservation Act 1997* (TSC Act). The eligibility and management of Biobank sites under the TSC Act appear to be fundamentally unchanged under the BC Act which refers to Biobank sites as *Biodiversity Stewardship Sites*.

Of particular relevance to Council is that Section 5.9(2) of the BC Act states that the Minister may enter into a biodiversity stewardship agreement relating to land that is Crown land with a public authority that owns or has the control and management of the land with the consent of the Minister administering the *Crown Lands Act 1989* (CL Act). Accordingly, it is inferred that Crown land under the management control of HCC may be eligible as a Biodiversity Stewardship Site to be administered by Council providing there is approval from the Department of Planning Industry and Environment – Crown Lands. Although the scope of this desktop assessment covered only Council owned land, initial investigations have identified a number of large vegetated Crown land parcels which Council currently manages. Accordingly, in addition to Council owned land, this assessment includes a brief review of some key council managed Crown land parcels.

APPROACH AND RESULTS

Identification of potential Biobank/Biodiversity Stewardship Sites

ELA used the spatial cadastral and ownership shapefile data provided by Council to identify a subset of land areas for further analysis. Potential Biodiversity Stewardship Sites are referred as “assessment areas”. The criteria used to identify the assessment areas were:

- greater than 5 ha of mapped remnant vegetation
- Council owned land
- Crown land under council management control

A minimum area of greater than 5 ha of remnant vegetation was chosen because this was regarded to be the minimum size threshold for a viable Biodiversity Stewardship Site and only if the estimated credit sale price relative to the cost of managing the site is high e.g. the credits generated are in demand and can be sold at a price that covers the in perpetuity management costs (such as for a threatened ecological community (TEC)) and the site is intact and unlikely to suffer disturbance (lower management costs). In general, the larger the Biodiversity Stewardship Site the lower the management cost per ha due to economies of scale.

Providing the land is owned by the same entity (e.g. Council), a Biodiversity Stewardship Site may comprise of separate parcels of land even if the parcels are not immediately adjacent. Accordingly, the assessment areas are made up of one or more land parcels. Some assessment areas include both Council land and Crown land with council management control. For the Council owned land, the classification of either operational land or community land under the *Local Government Act 1993* (LG Act) was identified. In accordance with section 13.11 of the Biodiversity Assessment Method 2017 (BAM 2017) this assessment has discounted the number of credits

generated by 20% for Council owned land classified as community land but not for Crown land under council management control because it has assumed that the Crown land has not been authorised to be used for an additional conservation purpose through a plan of management.

There are 26 assessment areas comprising of a total of 69 lots. The assessment area details including ownership (Council or the Crown), Lot and DP and street address are provided in **Table 1**. The location of the assessment areas is shown in **Figure 1**.

Table 1: Assessment area details

Assessment Area	Area of vegetation ha	Reserve name	Location	Ownership	Lot and DP details	Classification of Council owned land
1.	5.36	The Driftway Crown Reserve	The Driftway, SOUTH WINDSOR	Crown	Lot 338 DP 752061	-
2.	5.87	Part Bilpin Park	Bells Line Of Road, BILPIN	Crown	Lot 42 DP 751626 Lot 54 DP 751626	-
3.	5.2	Old Cattai Oval	Cattai Road, MARAYLYA	Crown	Lot 279 DP 752050	-
4.	6.85	Part Matheson Park	Mill Road, KURRAJONG	Crown	Lot 331 DP 725699 Lot 332 DP 725699	-
5.	6.96	-	Ti-Tree Place & Sackville Road, WILBERFORCE	Council	Lot 38 DP 261756 Lot 39 DP 261756 Lot 252 DP 1004592	Operational
6.	7.9	West Portland Road Reserve	West Portland Road, LOWER PORTLAND	Crown	Lot 7006 DP 93492	-
7.	9.53	Lower Portland Crown Reserve	Hebron Road & Wheelbarrow Ridge Road, LOWER PORTLAND	Crown	Lot 50 DP 753784 Lot 58 DP 753784 Lot 7007 DP 1053315	-
8.	5.46	-	Wilberforce Road, WILBERFORCE	Council	Lot 22 DP 829589	Operational
9.	11.3	Kent Beach	West Portland Road, SACKVILLE	Crown	Lot 7004 DP 93551	-
10.	11.52	Part Kurrajong Heights Park	Bells Line Of Road & Warks Hill Road, KURRAJONG HEIGHTS	Council & Crown	Lot 10 DP 746825 Lot 1 DP 1007671 Lot 7002 DP 1057303 Lot 7007 DP 1059294	Community
11.	11.61	Kurrajong Heights Park	Bells Line Of Road, KURRAJONG HEIGHTS	Crown	Lot 7017 DP 1059293	-

Assessment Area	Area of vegetation ha	Reserve name	Location	Ownership	Lot and DP details	Classification of Council owned land
12.	12.07	Bellbird Hill Reserve	Bells Line Of Road, KURRAJONG HEIGHTS	Council	Lot 10 DP 719776 Lot 1 DP 1172756	Community
13.	10.95	Part Oakville Park	Oakville Road & Old Stock Route Road, OAKVILLE	Crown	Lot 106 DP 752050 Lot 7006 DP 1027993	-
14.	5.56	Berger Road Lake Reserve	Berger Road, SOUTH WINDSOR	Council & Crown	Lot 25 DP 27136 Lot 29 DP 27136 Lot 45 DP 27136 Lot 1 DP 801019 Lot 2 DP 801019 Lot 3 DP 801019 Lot 7302 DP 1154417	Community & Operational
15.	16.84	Turnbulls Hill Crown Reserve	West Portland Road, LOWER PORTLAND	Crown	Lot 181 DP 751656	-
16.	9.14	Part Woodbury Reserve	Golden Valley Drive, Kentucky Drive & Spinks Road	Council	Lot 457 DP 214756 Lot 464 DP 214756 Lot 484 DP 214756 Lot 514 DP 214756	Community & Operational
17.	20.93	Chain of Ponds	Stannix Park Road, EBENEZER	Crown	Lot 7004 DP 1029117	-
18.	21.12	Charles Kemp Recreational Reserve	Tizzana Road, EBENEZER	Council	Lot 9 DP 881972	Community
19.	32.72	Diamond Hill Drive Reserve & Singletons Reserve	Diamond Hill Drive, KURRAJONG HILLS Mill Road, KURRAJONG	Council & Crown	Lot 41 DP 809616 Lot 285 DP 751649 Lot 286 DP 751649	Community
20.	18.41	Yarramundi Reserve	Springwood Road, AGNES BANKS & YARRAMUNDI	Crown	Lot 57 DP 751660 Lot 90 DP 786549 Lot 7300 DP 1140672	-

Assessment Area	Area of vegetation ha	Reserve name	Location	Ownership	Lot and DP details	Classification of Council owned land
21.	54.73	Devils Hole Creek Reserve	Lieutenant Bowen Road, BOWEN MOUNTAIN	Crown	Lot 7303 DP 1141207	-
22.	62.11	Lower Portland Crown Reserve	Wheelbarrow Ridge Road, LOWER PORTLAND	Crown	Lot 45 DP 753784 Lot 65 DP 753784 Lot 7005 DP 1053316	-
23.	62.37	Part Colo Heights Reserve	Putty Road, COLO HEIGHTS	Crown	Lot 1 DP 1134606 Lot 2 DP 1134606 Lot 7002 DP 1055569 Lot 7003 DP 1055569	-
24.	73.46	Part Powell Park	Bells Line Of Road, BILPIN	Crown	Lot 7001 DP 93274 Lot 7002 DP 93274	-
25.	128.88	Part Unnamed Reserve	Lieutenant Bowen Drive & Lieutenant Bowen Road, BOWEN MOUNTAIN	Council & Crown	Lot 11 DP 261139 Lot 140 DP 205986 Lot 200 DP 206301 Lot 7011 DP 1073187 Lot 7012 DP 1073186 Lot 7013 DP 1073211	Community & Operational
26.	727.68	Part Colo Park & Morans Rock Reserve	Putty Road, COLO & BLAXLANDS RIDGE Lower Colo Road, LOWER PORTLAND	Council & Crown	Lot 1 DP 924097 Lot 32 DP 838454 Lot 74 DP 751656 Lot 158 DP 751656 Lot 182 DP 751656 Lot 7012 DP 93494 Lot 7317 DP 1164885 Lot 7319 DP 1169513	Community

Disclaimer: Information presented has been based off data provided to ELA. Where gaps exist, the 2008 Digital Cadastral Database has been used and may be out of date, or land has been assumed to be owned by Council.

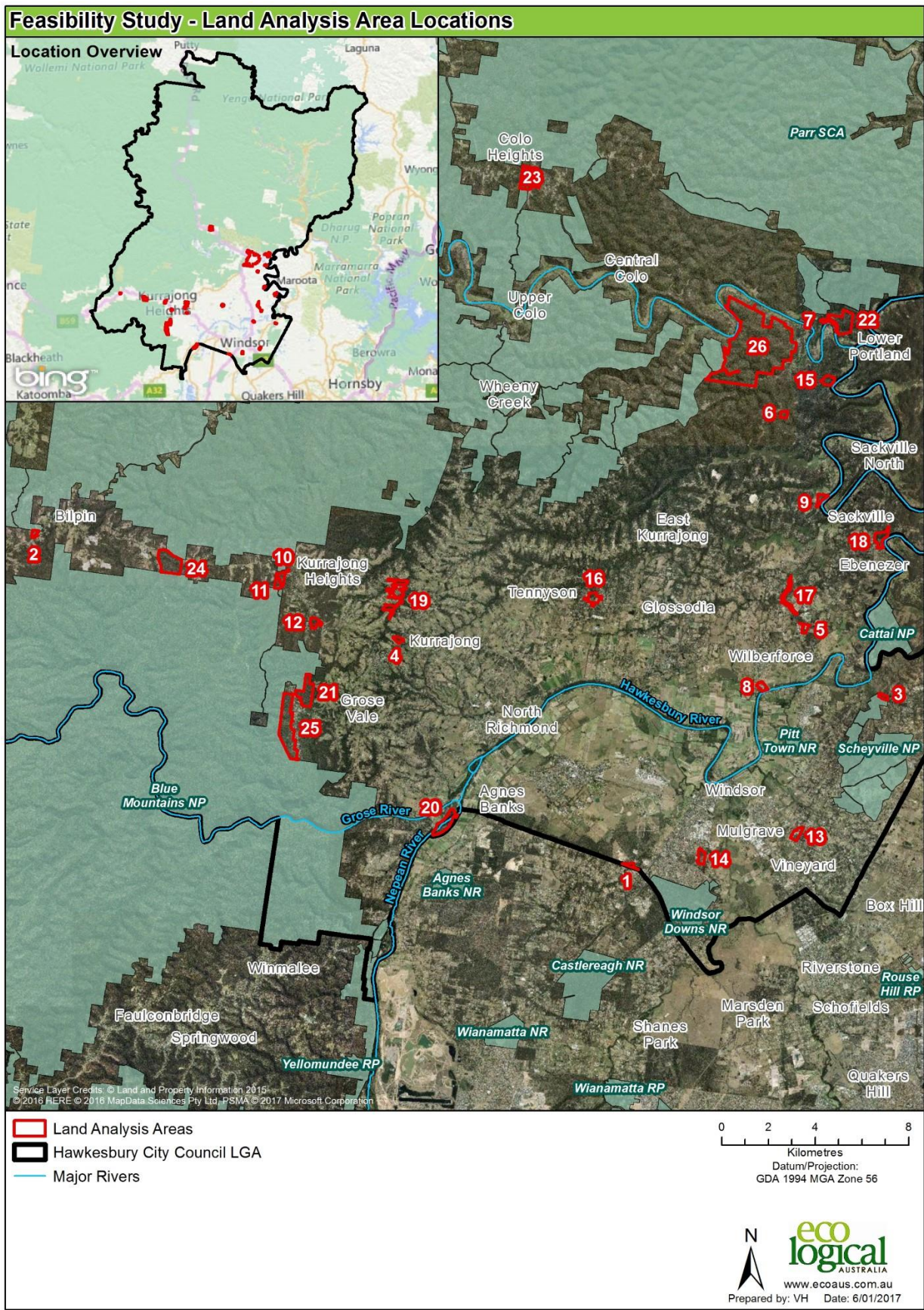


Figure 1: Location of assessment areas

Vegetation Type Correlation

ELA used existing Council vegetation mapping to correlate each vegetation community to a “best fit” Plant Community Type (PCT). Due to the absence of descriptive vegetation community information, for some communities, there was more than one PCT that could be applied. Our ‘best fit’ PCT is therefore a professional judgement based on incomplete data. Field survey will be necessary to confirm PCTs. Eleven correlated PCTs including six TECs were identified. These are provided in **Table 2** below with the TECs in bold type.

Table 2: Correlated PCTs

PCTID	Correlated Plant Community Type	EEC	Percent cleared in CMA	Vegetation Formation	Vegetation Class
724	Broad-leaved Ironbark - Grey Box - Melaleuca decora grassy open forest on clay/gravel soils of the Cumberland Plain, Sydney Basin Bioregion	Shale/Gravel Transition Forest (SGTF)	75	Dry Sclerophyll Forests (Shrub/grass sub-formation)	Cumberland Dry Sclerophyll Forests
835	Forest Red Gum - Rough-barked Apple grassy woodland on alluvial flats of the Cumberland Plain, Sydney Basin Bioregion	River-flat eucalypt forest (RF)	95	Forested Wetlands	Coastal Floodplain Wetlands
849	Grey Box - Forest Red Gum grassy woodland on flats of the Cumberland Plain, Sydney Basin Bioregion	Cumberland Plain Woodland (CPW)	95	Grassy Woodlands	Coastal Valley Grassy Woodlands
877	Grey Myrtle dry rainforest of the Sydney Basin Bioregion and South East Corner Bioregion	Western Sydney Dry Rainforest (WSDR)	25	Rainforests	Dry Rainforests
1081	Red Bloodwood - Grey Gum woodland on the edges of the Cumberland Plain, Sydney Basin Bioregion		40	Dry Sclerophyll Forests (Shrubby sub-formation)	Sydney Hinterland Dry Sclerophyll Forests
1083	Red Bloodwood - scribbly gum heathy woodland on sandstone plateaux of the Sydney Basin Bioregion		25	Dry Sclerophyll Forests (Shrubby sub-formation)	Sydney Coastal Dry Sclerophyll Forests
1181	Smooth-barked Apple - Red Bloodwood - Sydney Peppermint heathy open forest on slopes of dry sandstone gullies of western and		20	Dry Sclerophyll Forests (Shrubby sub-formation)	Sydney Coastal Dry Sclerophyll Forests

PCTID	Correlated Plant Community Type	EEC	Percent cleared in CMA	Vegetation Formation	Vegetation Class
	southern Sydney, Sydney Basin Bioregion				
1250	Sydney Peppermint - Smooth-barked Apple - Red Bloodwood shrubby open forest on slopes of moist sandstone gullies, eastern Sydney Basin Bioregion		30	Dry Sclerophyll Forests (Shrubby sub-formation)	Sydney Coastal Dry Sclerophyll Forests
1281	Turpentine - Grey Ironbark open forest on shale in the lower Blue Mountains, Sydney Basin Bioregion	Sydney Turpentine Ironbark Forest (STIF)	90	Wet Sclerophyll Forests (Grassy sub-formation)	Northern Hinterland Wet Sclerophyll Forests
1327	Yellow Bloodwood - ironbark shrubby woodland of the dry hinterland of the Central Coast, Sydney Basin Bioregion		30	Dry Sclerophyll Forests (Shrubby sub-formation)	Sydney Hinterland Dry Sclerophyll Forests
1395	Narrow-leaved Ironbark - Broad-leaved Ironbark - Grey Gum open forest of the edges of the Cumberland Plain, Sydney Basin Bioregion	Shale Sandstone Transition Forest (SSTF)	80	Grassy Woodlands	Coastal Valley Grassy Woodlands

Estimating the number of ecosystem credits generated, in perpetuity management costs and credit sale prices

The number of ecosystem credits generated for each assessment area has been estimated at 3 credits per ha. It has been assumed that all vegetation is in moderate to good condition. As discussed above, a 20% credit discount rate has been applied to the number of credits generated from Council owned land classified as community land due to the existing obligations under the LG Act to manage the land for its biodiversity values.

A very broad indicative estimate has been provided in **Table 3** for the in perpetuity management costs (Credit Part A) based on the area (ha) of the potential Biodiversity Stewardship Site. As mentioned above, smaller sites are significantly more expensive to manage in terms of administrative costs and more potential deterioration to biodiversity values such as increased edge effects, fragmentation and historical disturbance. The costs provided are conservative and may be higher. A more accurate estimate would require a site inspection, discussion with Council land managers and the use of the DPIE in perpetuity cost of management spreadsheet otherwise known as the Total Fund Deposit (TFD) worksheet. The estimates in **Table 3** are based on ELA's experience with calculating management costs for BioBank and Biodiversity Stewardship Sites in a range of sizes and public registers on the DPIE BioBanking website which lists the size and minimum TFD for Biobanking agreements.

Table 3: Conservative estimates for indicative in perpetuity management costs (Part A)

Assessment area size (ha)	Broad indicative estimate of management costs per credit for vegetation in moderate to good condition
5 – 10	\$12,000
10 – 20	\$7,000
20 – 70	\$5,000
> 70	\$3,000

Indicative credit sale prices for each PCT have been estimated in **Table 4**. These estimates are based on information from the BOPC and ELA experience with undertaking assessments for clients seeking to:

- offset their development through the purchase and retirement of credits
- establish Biobank and Biodiversity Stewardship sites to generate and sell credits.

The establishment of the BC Act lead to changes to the and credit calculator which had implications for the number of credits that will be generated by Biodiversity Stewardship Sites. The Department of Planning, Industry and Environment (DPIE) administers and maintains the Biodiversity Offsets Payment Calculator (BOPC) which has indicative credit pricing for each PCT, but this credit pricing is used for proponents to offset their development credit obligations with through payment into the Biodiversity Offsets Payment Fund. The BOPC prices provide a ceiling price per credit for each PCT, so any credits generated on a Stewardship Site are likely to have prices lower than these on the open credit market. It should also be noted that credit prices fluctuate with changes in credit supply and demand in the credit market for PCTs and can change on a daily basis.

When purchasing credits, a number of factors will affect the price paid. This includes the size of the transaction as generally, the price/ecosystem credit is lower when a larger number of credits is purchased in one transaction, but this is often limited by the landholder's ability to supply the required credit type(s) based on the biodiversity values occurring on their land.

It is considered likely that the demand and price of ecosystem and species credits from the Cumberland Plain region will increase over time in response to development pressures associated with the Western Sydney Airport at Badgerys Creek, Broader Western Sydney Employment Area, and South West Growth Centre. For the ecosystem credits in most demand the prices are around \$16,000 - \$40,000 per credit with prices for the Cumberland Plain Woodland around \$40,000 per credit in the BOPC. Credits for the endangered Sydney Turpentine Ironbark Forest (PCT 1281) are very scarce and should there be a demand, likely to fetch a high sale price. Please note there is an error in the BOPC with regards to PCT 1281 whereby price per credit is around \$7,500 excl. GST. Due to this error we have estimated the credit value to be the same as the credit price under Biobanking as \$31,500 per credit.

Table 4: Indicative credit sale price

PCT ID	Plant Community Type	TEC	Estimated credit sale price based on BOPC prices 22 April 2020 (excl. GST)
724	Broad-leaved Ironbark - Grey Box - Melaleuca decora grassy open forest on clay/gravel soils of the Cumberland Plain, Sydney Basin Bioregion	Shale/Gravel Transition Forest (SGTF)	\$23,525.41
835	Forest Red Gum - Rough-barked Apple grassy woodland on alluvial flats of the Cumberland Plain, Sydney Basin Bioregion	River-flat eucalypt forest (RF)	\$16,487.13
849	Grey Box - Forest Red Gum grassy woodland on flats of the Cumberland Plain, Sydney Basin Bioregion	Cumberland Plain Woodland (CPW)	\$41,282.49
877	Grey Myrtle dry rainforest of the Sydney Basin Bioregion and South East Corner Bioregion	Western Sydney Dry Rainforest (WSDF)	\$37,346.59
1081	Red Bloodwood - Grey Gum woodland on the edges of the Cumberland Plain, Sydney Basin Bioregion		\$12,791.81
1083	Red Bloodwood - scribbly gum heathy woodland on sandstone plateaux of the Sydney Basin Bioregion		\$10,714.30
1181	Smooth-barked Apple - Red Bloodwood - Sydney Peppermint heathy open forest on slopes of dry sandstone gullies of western and southern Sydney, Sydney Basin Bioregion		\$10,714.30
1250	Sydney Peppermint - Smooth-barked Apple - Red Bloodwood shrubby open forest on slopes of moist sandstone gullies, eastern Sydney Basin Bioregion		\$10,714.30
1281	Turpentine - Grey Ironbark open forest on shale in the lower Blue Mountains, Sydney Basin Bioregion	Sydney Turpentine Ironbark Forest (STIF)	\$7,787.85* BOPC price which is an error. \$31,500 ELA estimated price based on old BioBanking price.
1327	Yellow Bloodwood - ironbark shrubby woodland of the dry hinterland of the Central Coast, Sydney Basin Bioregion		\$12,791.81
1395	Narrow-leaved Ironbark - Broad-leaved Ironbark - Grey Gum open forest of the edges of the Cumberland Plain, Sydney Basin Bioregion	Shale Sandstone Transition Forest (SSTF)	\$21,746.99

Table 5: Estimate of ecosystem credits generated, management costs and likely returns for each potential biobank site

Assessment Area no	Reserve Name	Ownership (Council, Crown or both)	Area ha	Ecosystem credits generated	Estimated management costs	Estimated credit sales	Estimated part B
1.	The Driftway	Crown	5.36	PCT 835– 12 PCT 849 – 4	\$648,000	\$362,976	-\$285,024

Assessment Area no	Reserve Name	Ownership (Council, Crown or both)	Area ha	Ecosystem credits generated	Estimated management costs	Estimated credit sales	Estimated part B
	Crown Reserve						
2.	Part Bilpin Park	Crown	5.87	PCT 1181 – 0.5 PCT 1281 – 1 PCT 1327 – 16	\$708,000	\$241,526	-\$466,474 estimation for PCT 1281 based on BioBank price discussed in Table 4
3.	Old Cattai Oval	Crown	5.2	PCT 849 – 15.5	\$744,000	\$639,879	-\$104,121
4.	Part Matheson Park	Crown	6.85	PCT 1395 – 20.5	\$828,000	\$445,813	-\$382,187
5.	-	Council	6.96	PCT 835 – 1.5 PCT 849 – 15 PCT 1083 – 4	\$840,000	\$730,956	-\$109,044
6.	West Portland Road Reserve	Crown	7.9	PCT 1181 – 6.5 PCT 1327 – 17	\$948,000	\$285,880	-\$662,120
7.	Lower Portland Crown Reserve	Crown	9.53	PCT 1181 – 24 PCT 1327 – 4.5	\$1,368,000	\$314,706	-\$1,053,293
8.	-	Council	5.46	PCT 835 – 15.5 PCT 849 – 1	\$792,000	\$296,831	-\$495,169
9.	Kent Beach	Crown	11.3	PCT 1083 – 28 PCT 1181 – 5.5 PCT 1395 – 0.2	\$952,000	\$363,278	-\$588,722
10.	Part Kurrajong Heights Park	Council & Crown	11.53	PCT 1083 – 2.5 PCT 1327 – 11	\$798,000	\$167,496	-\$630,504
11.	Kurrajong Heights Park	Crown	11.61	PCT 1083 – 1.5 PCT 1181 – 20 PCT 1327 – 13.5	\$812,000	\$403,046	-\$408,954
12.	Bellbird Hill Reserve	Council	12.07	PCT 1281 – 36	\$651,000	\$1,134,000	\$483,000* estimation for PCT 1281 based on BioBank price

Assessment Area no	Reserve Name	Ownership (Council, Crown or both)	Area ha	Ecosystem credits generated	Estimated management costs	Estimated credit sales	Estimated part B
							discussed in Table 4
13.	Part Oakville Park	Crown	10.95	PCT 724– 6.5 PCT 849 – 26	\$763,000	\$1,226,260	\$463,260
14.	Berger Road Lake Reserve	Council & Crown	5.56	PCT 724 – 16 PCT 835 – 1	\$612,000	\$392,894	-\$219,106
15.	Turnbulls Hill Crown Reserve	Crown	16.84	PCT 1181 – 27 PCT 1327 – 24	\$1,414,000	\$596,289	-\$817,710
16.	Part Woodbury Reserve	Council	9.14	PCT 849 – 17 PCT 1181 – 6 PCT 1395 – 3	\$852,000	\$831,329	-\$20,671
17.	Chain of Ponds	Crown	20.93	PCT 835 – 35 PCT 1181 – 5.5 PCT 1395 – 22	\$1,045,000	\$1,115,808	\$70,808
18.	Charles Kemp Recreation al Reserve	Council	21.12	PCT 877 – 7 PCT 1083 – 27 PCT 1327 – 25 PCT 1395 – 4	\$985,000	\$957,495	-\$27,505
19.	Diamond Hill Drive Reserve & Singletons Reserve	Council & Crown	32.72	PCT 835 – 3 PCT 1181 – 45 PCT 1395 – 50	\$1,675,000	\$1,663,415	-\$11,584
20.	Yarramundi Reserve	Crown	18.41	PCT 835 – 55	\$1,547,000	\$906,792	-\$640,208
21.	Devils Hole Creek Reserve	Crown	54.73	PCT 1181– 34.5 PCT 1281 – 128 PCT 1327 – 1.5	\$2,735,000	\$4,420,830	\$1,685,831 *estimation for PCT 1281 based on BioBank price discussed in Table 4.
22.	Lower Portland Crown Reserve	Crown	62.11	PCT 1181 – 80 PCT 1327 – 107	\$3,105,000	\$2,225,868	-\$879,132
23.	Part Colo Heights Reserve	Crown	62.37	PCT 1083 – 27 PCT 1181 – 138 PCT 1327 – 22	\$3,120,000	\$2,049,279	-\$1,070,721

Assessment Area no	Reserve Name	Ownership (Council, Crown or both)	Area ha	Ecosystem credits generated	Estimated management costs	Estimated credit sales	Estimated part B
24.	Part Powell Park	Crown	73.46	PCT 1181 – 51 PCT 1327 – 170	\$2,202,000	\$2,721,037	\$519,037
25.	Part Unnamed Reserve	Council & Crown	128.88	PCT 1081– 3 PCT 1083 -22 PCT 1181 – 200 PCT 1281 – 2 PCT 1327- 160	\$3,861,000	\$4,526,640	\$664,640 *estimation for PCT 1281 based on BioBank price discussed in Table 4.
26.	Part Colo Park & Morans Rock Reserve	Council & Crown	727.68	PCT 1081 – 140 PCT 1181 – 719 PCT 1250 – 5 PCT 1327-1318	\$26,190,000	\$26,407,612	\$217,612

Species Credits

Wildlife Atlas records dating back to the previous 20 years were checked during the 2017 assessment for records of threatened species that are species credit species (all threatened flora species and approximately half of all threatened fauna species) within 500 metres of each assessment area. The results are presented in **Table 6**.

Without a site inspection or accurately mapped known habitat, the quantum of the species credits present on the potential biobank site is not possible to estimate. However, as a guide and taking a conservative approach, approximately 3 species credits may be generated per threatened plant individual or hectares of habitat for threatened fauna.

Ecosystem and species credits are calculated and scaled in different ways by the methodology, and consequently the price of most species credits would be expected to be lower than for ecosystem credits. On average species credits from the Cumberland Plain can fetch prices of \$500 - \$1000/credit. However, there can be notable exceptions, such as has occurred for Green and Golden Bell Frog with a price per credit of \$8,263.15 in the BOPC.

Table 6: Species credit species records within 500m of each assessment area

Assessment Area no	Reserve Name	Ownership	Area ha	Species credit species within 500m
2	Part Bilpin Park	Crown	5.87	<i>Myotis macropus</i> (Southern Myotis)- note breeding habitat only
3	Old Cattai Oval	Crown	5.2	<i>Myotis macropus</i> (Southern Myotis)- note breeding habitat only
4	Part Matheson Park	Crown	6.85	<i>Leucopogon fletcheri</i> subsp. <i>fletcheri</i>
5	-	Council	6.96	<i>Dillwynia tenuifolia</i>

Assessment Area no	Reserve Name	Ownership	Area ha	Species credit species within 500m
				<i>Pultenaea parviflora</i>
7	Lower Portland Crown Reserve	Crown	9.53	<i>Dillwynia tenuifolia</i> <i>Phascolarctos cinereus</i> (Koala)
8	-	Council	5.46	<i>Petaurus norfolcensis</i> (Squirrel Glider) <i>Pseudophryne australis</i> (Red-crowned Toadlet)
11	Kurrajong Heights Park	Crown	11.61	<i>Zieria involucrata</i>
12	Bellbird Hill Reserve	Council	12.07	<i>Phascolarctos cinereus</i> (Koala)
13	Part Oakville Park	Crown	10.95	<i>Acacia pubescens</i> (Downy Wattle) <i>Dillwynia tenuifolia</i> <i>Pultenaea parviflora</i>
17	Chain of Ponds	Crown	20.93	<i>Dillwynia tenuifolia</i> <i>Pultenaea parviflora</i> <i>Meridolum corneovirens</i> (Cumberland Plain Land Snail) <i>Myotis macropus</i> (Southern Myotis)
19	Diamond Hill Drive Reserve & Singletons Reserve	Council & Crown	32.72	<i>Phascolarctos cinereus</i> (Koala)
20	Yarramundi Reserve	Crown	18.41	<i>Dillwynia tenuifolia</i> <i>Myotis macropus</i> (Southern Myotis)
21	Devils Hole Creek Reserve	Crown	54.73	<i>Grammitis stenophylla</i> (Narrow-leaf Finger Fern)
22	Lower Portland Crown Reserve	Crown	62.11	<i>Keraudrenia corollata</i> var. <i>denticulate</i> in the Hawkesbury local government area <i>Petaurus norfolcensis</i> (Squirrel Glider) <i>Phascolarctos cinereus</i> (Koala)
23	Part Colo Heights Reserve	Crown	62.37	<i>Phascolarctos cinereus</i> (Koala)
24	Part Powell Park	Crown	73.46	<i>Phascolarctos cinereus</i> (Koala)
25	Part Unnamed Reserve	Council & Crown	128.88	<i>Grammitis stenophylla</i> (Narrow-leaf Finger Fern) <i>Pseudophryne australis</i> (Red-crowned Toadlet)
26	Part Colo Park & Morans Rock Reserve	Council & Crown	727.68	<i>Acacia bynoeana</i> (Bynoe's Wattle) <i>Asterolasia elegans</i> <i>Dillwynia tenuifolia</i> <i>Phascolarctos cinereus</i> (Koala) <i>Pseudophryne australis</i> (Red-crowned Toadlet)

DISCUSSION AND RECOMMENDATIONS

The results in **Table 5** indicate that due to high management costs many of the smaller sized assessment areas i.e. sites of < 20 ha are not considered financially viable options for establishing Biodiversity Stewardship sites. For those potentially financially viable sites (i.e. where the estimated credit sale price would cover or exceed the in perpetuity management costs) which are under 20 ha, careful consideration should be given to the likely in perpetuity management costs i.e. existing and ongoing disturbance to biodiversity values as this assessment has taken a conservative approach to estimating in perpetuity costs.

It is assumed that because of the likely time consuming and uncertain negotiation outcomes regarding options to set up Stewardship Sites on Council managed Crown land, that Council would prioritise consideration of Council owned land as potential Biodiversity Stewardship Sites. However, most of the larger most financially viable sites are Crown land with Council management control (Oakville Park (13), Chain of Ponds (17), Devils Hole Creek Reserve (21), Powell Park (24) or a mixture of both Crown and Council land (Diamond Hill Drive Reserve & Singletons Reserve (19), unnamed assessment area (25) and Colo Park & Morans Rock Reserve (26)).

The potentially very high estimated credit price for the endangered Sydney Turpentine Ironbark Forest vegetation HN604 (\$31,500/credit) significantly increases the financial viability of the Council reserve Bellbird Hill (12) and Crown reserve Devils Hole Creek Reserve (21) and the unnamed assessment area (22).

One Council owned assessment area shown in **Table 7** and six Crown owned assessment areas shown in Table 8 should be given further consideration as potential Biodiversity Stewardship Sites.

Table 7: Council owned land recommended for further consideration as proposed biobank sites

Assessment Area no	Reserve Name	Ownership (Council, Crown or both)	Area ha	Ecosystem credits generated	Estimated management costs	Estimated credit sales	Estimated part B
12	Bellbird Hill Reserve	Council	12.07	PCT 1281 – 36	\$651,000	\$1,134,000	\$483,000

Table 8: Crown owned land recommended for further consideration as proposed biobank sites

Assessment Area no	Reserve Name	Ownership (Council, Crown or both)	Area ha	Ecosystem credits generated	Estimated management costs	Estimated credit sales	Estimated part B
13	Part Oakville Park	Crown	10.95	PCT 724– 6.5 PCT 849 – 26	\$763,000	\$1,226,260	\$463,260
17	Chain of Ponds	Crown	20.93	PCT 835 – 35 PCT 1181 – 5.5 PCT 1395 – 22	\$1,045,000	\$1,115,808	\$70,808
21	Devils Hole Creek Reserve	Crown	54.73	PCT 1181– 34.5 PCT 1281 – 128 PCT 1327 – 1.5	\$2,735,000	\$4,420,830	\$1,685,831 *estimation for PCT 1281 based on BioBank price discussed in Table 4.
24	Part Powell Park	Crown	73.46	PCT 1181 – 51 PCT 1327 – 170	\$2,202,000	\$2,721,037	\$519,037
25	Part Unnamed Reserve	Council & Crown	128.88	PCT 1081– 3 PCT 1083 -22 PCT 1181 – 200 PCT 1281 – 2 PCT 1327- 160	\$3,861,000	\$4,526,640	\$664,640 *estimation for PCT 1281 based on BioBank price discussed in Table 4.
26	Part Colo Park & Morans Rock Reserve	Council & Crown	727.68	PCT 1081 – 140 PCT 1181 – 719 PCT 1250 – 5 PCT 1327-1318	\$26,190,000	\$26,407,612	\$217,612

It is recommended that the type, extent and condition of the vegetation on these sites be validated during a rapid site assessment and following the validation that Council register all potential credits generated on the DPIE Biodiversity Offsets Scheme Expressions of Interest public register. Registering on the register places no obligation on Council and will provide Council with an indication of credit demand and confidence moving forward as costs to establish Biodiversity Stewardship Sites are high (\$50, 000 - \$150,000 per site) and can take 6 to 12 months to complete.