

## **Hawkesbury Waste Management Facility - Yearly Summary for 2023/24**

**Licence number** - 5293

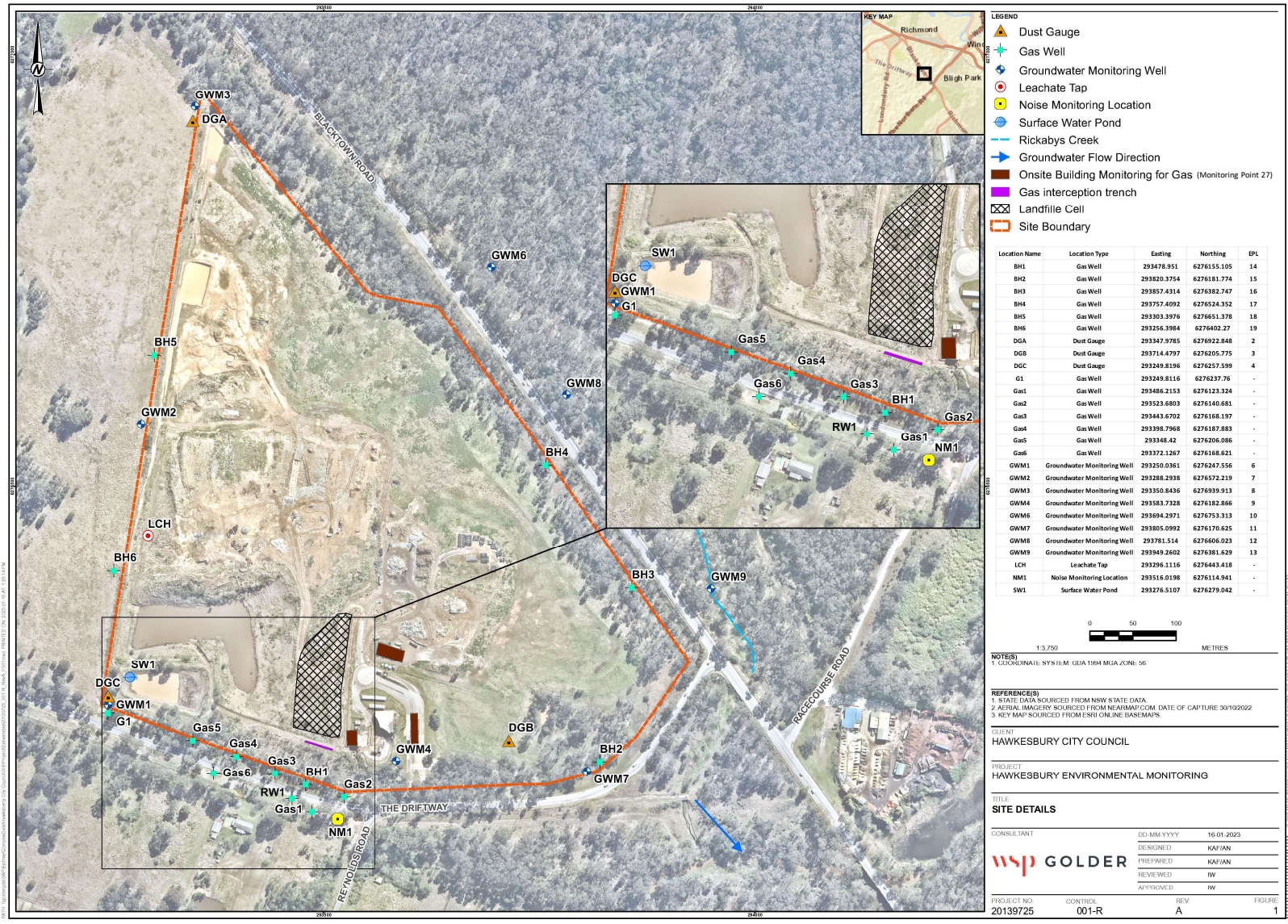
**Hawkesbury Waste Management Facility - The Driftway, South Windsor NSW 2756 Licencee** - Hawkesbury City Council

**Public Register** : <https://www.epa.nsw.gov.au/licensing-and-regulation/public-registers>

**Licence Period** - 25th July - 24th July

**LOR** = Limit of Reporting

**NT** = Not Tested



## Waste Managment Facility - 5293

### Monitoring Point 14 - BH1

Pollutant	Unit	Monitoring Frequency	Date Sampled	Date Sampled	Date Sampled	Date Sampled	Date Sampled	Date Sampled
			29/06/2023	31/07/2023	3/08/2023	29/09/2023	30/10/2023	29/11/2023
			Date Obtained	Date Obtained	Date Obtained	Date Obtained	Date Obtained	Date Obtained
			29/06/2023	31/07/2023	2/11/2023	22/10/2023	31/10/2023	30/11/2023
			Sample Code	Sample Code	Sample Code	Sample Code	Sample Code	Sample Code
Carbon Dioxide	% v/v	Monthly	10.7	11.7	12.1	10.4	18.1	23.1
Methane	% v/v	Monthly	0.1	0.8	7.8	0.7	0.9	8.4

			Date Sampled	Date Sampled	Date Sampled	Date Sampled	Date Sampled	Date Sampled
			Date Obtained	Date Obtained	Date Obtained	Date Obtained	Date Obtained	Date Obtained
			Sample Code	Sample Code	Sample Code	Sample Code	Sample Code	Sample Code
Carbon Dioxide	% v/v	Monthly						
Methane	% v/v	Monthly						

### Monitoring Point 15 - BH2

Pollutant	Unit	Monitoring Frequency	Date Sampled	Date Sampled
			Date Obtained	Date Obtained
			Sample Code	Sample Code
Carbon Dioxide	% v/v	Every 6 Months		
Methane	% v/v	Every 6 Months		

### Monitoring Point 16 - BH3

Pollutant	Unit	Monitoring Frequency	Date Sampled	Date Sampled
			Date Obtained	Date Obtained
			Sample Code	Sample Code
Carbon Dioxide	% v/v	Every 6 Months		
Methane	% v/v	Every 6 Months		

## Waste Managment Facility - 5293

### Monitoring Point 17 - BH4

Pollutant	Unit	Monitoring Frequency	Date Sampled	Date Sampled
			Date Obtained	Date Obtained
			Sample Code	Sample Code
Carbon Dioxide	% v/v	Every 6 Months		
Methane	% v/v	Every 6 Months		

### Monitoring Point 18 - BH5

Pollutant	Unit	Monitoring Frequency	Date Sampled	Date Sampled	Date Sampled	Date Sampled	Date Sampled	Date Sampled
			29/06/2023	31/07/2023	3/08/2023	29/09/2023	30/10/2023	29/11/2023
			Date Obtained	Date Obtained	Date Obtained	Date Obtained	Date Obtained	Date Obtained
			29/06/2023	31/07/2023	2/11/2023	22/10/2023	31/10/2023	30/11/2023
			Sample Code	Sample Code	Sample Code	Sample Code	Sample Code	Sample Code
Carbon Dioxide	% v/v	Monthly	2.1	1	1.2	0.4	0.3	5.3
Methane	% v/v	Monthly	0.1	0.2	0.1	0.1	0	3.8

			Date Sampled	Date Sampled	Date Sampled	Date Sampled	Date Sampled	Date Sampled
			Date Obtained	Date Obtained	Date Obtained	Date Obtained	Date Obtained	Date Obtained
			Sample Code	Sample Code	Sample Code	Sample Code	Sample Code	Sample Code
Carbon Dioxide	% v/v	Monthly						
Methane	% v/v	Monthly						

### Monitoring Point 19 - BH6

Pollutant	Unit	Monitoring Frequency	Date Sampled	Date Sampled	Date Sampled	Date Sampled	Date Sampled	Date Sampled
			29/06/2023	31/07/2023	3/08/2023	29/09/2023	30/10/2023	29/11/2023
			Date Obtained	Date Obtained	Date Obtained	Date Obtained	Date Obtained	Date Obtained
			29/06/2023	31/07/2023	2/11/2023	22/10/2023	31/10/2023	30/11/2023
			Sample Code	Sample Code	Sample Code	Sample Code	Sample Code	Sample Code
Carbon Dioxide	% v/v	Monthly	12.1	15.3	1	3.1	2.5	1.6
Methane	% v/v	Monthly	17.1	19.3	0.6	6.5	8.3	0

## Waste Managment Facility - 5293

			Date Sampled	Date Sampled	Date Sampled	Date Sampled	Date Sampled	Date Sampled
			Date Obtained	Date Obtained	Date Obtained	Date Obtained	Date Obtained	Date Obtained
			Sample Code	Sample Code	Sample Code	Sample Code	Sample Code	Sample Code
Carbon Dioxide	% v/v	Monthly						
Methane	% v/v	Monthly						

### Monitoring Point 20 - G1

Pollutant	Unit	Monitoring Frequency	Date Sampled	Date Sampled	Date Sampled	Date Sampled	Date Sampled	Date Sampled
			29/06/2023	31/07/2023	3/08/2023	29/09/2023	30/10/2023	29/11/2023
			Date Obtained	Date Obtained	Date Obtained	Date Obtained	Date Obtained	Date Obtained
			29/06/2023	31/07/2023	2/11/2023	22/10/2023	31/10/2023	30/11/2023
			Sample Code	Sample Code	Sample Code	Sample Code	Sample Code	Sample Code
Carbon Dioxide	% v/v	Monthly	0.2	0.2	12.4	6.1	4.2	5.4
Methane	% v/v	Monthly	0	0	0	0	0	0

			Date Sampled	Date Sampled	Date Sampled	Date Sampled	Date Sampled	Date Sampled
			Date Obtained	Date Obtained	Date Obtained	Date Obtained	Date Obtained	Date Obtained
			Sample Code	Sample Code	Sample Code	Sample Code	Sample Code	Sample Code
Carbon Dioxide	% v/v	Monthly						
Methane	% v/v	Monthly						

### Point 21 - Gas2

Pollutant	Unit	Monitoring Frequency	Date Sampled	Date Sampled	Date Sampled	Date Sampled	Date Sampled	Date Sampled
			29/06/2023	31/07/2023	3/08/2023	29/09/2023	30/10/2023	29/11/2023
			Date Obtained	Date Obtained	Date Obtained	Date Obtained	Date Obtained	Date Obtained
			29/06/2023	31/07/2023	2/11/2023	22/10/2023	31/10/2023	30/11/2023
			Sample Code	Sample Code	Sample Code	Sample Code	Sample Code	Sample Code
Carbon Dioxide	% v/v	Monthly	0.6	1.4	1.1	0.1	0.1	8.5
Methane	% v/v	Monthly	0	0.5	0.1	0.1	0	0



### Waste Managment Facility - 5293

			Date Sampled	Date Sampled	Date Sampled	Date Sampled	Date Sampled	Date Sampled
			Date Obtained	Date Obtained	Date Obtained	Date Obtained	Date Obtained	Date Obtained
			Sample Code	Sample Code	Sample Code	Sample Code	Sample Code	Sample Code
Carbon Dioxide	% v/v	Monthly						
Methane	% v/v	Monthly						

#### Point 22 - Gas3

Pollutant	Unit	Monitoring Frequency	Date Sampled	Date Sampled	Date Sampled	Date Sampled	Date Sampled	Date Sampled
			29/06/2023	31/07/2023	3/08/2023	29/09/2023	30/10/2023	29/11/2023
			Date Obtained	Date Obtained	Date Obtained	Date Obtained	Date Obtained	Date Obtained
			29/06/2023	31/07/2023	2/11/2023	22/10/2023	31/10/2023	30/11/2023
			Sample Code	Sample Code	Sample Code	Sample Code	Sample Code	Sample Code
Carbon Dioxide	% v/v	Monthly	0.5	1.3	1.2	2.2	2.1	2.1
Methane	% v/v	Monthly	0	0	0	0	0	0

			Date Sampled	Date Sampled	Date Sampled	Date Sampled	Date Sampled	Date Sampled
			Date Obtained	Date Obtained	Date Obtained	Date Obtained	Date Obtained	Date Obtained
			Sample Code	Sample Code	Sample Code	Sample Code	Sample Code	Sample Code
Carbon Dioxide	% v/v	Monthly						
Methane	% v/v	Monthly						

#### Point 23 - Gas4

Pollutant	Unit	Monitoring Frequency	Date Sampled	Date Sampled	Date Sampled	Date Sampled	Date Sampled	Date Sampled
			29/06/2023	31/07/2023	3/08/2023	29/09/2023	30/10/2023	29/11/2023
			Date Obtained	Date Obtained	Date Obtained	Date Obtained	Date Obtained	Date Obtained
			29/06/2023	31/07/2023	2/11/2023	22/10/2023	31/10/2023	30/11/2023
			Sample Code	Sample Code	Sample Code	Sample Code	Sample Code	Sample Code
Carbon Dioxide	% v/v	Monthly	0.4	0.7	0.9	1.6	1.9	8.5
Methane	% v/v	Monthly	0	0	0	0	0	0

## Waste Management Facility - 5293

			Date Sampled	Date Sampled	Date Sampled	Date Sampled	Date Sampled	Date Sampled
			Date Obtained	Date Obtained	Date Obtained	Date Obtained	Date Obtained	Date Obtained
			Sample Code	Sample Code	Sample Code	Sample Code	Sample Code	Sample Code
Carbon Dioxide	% v/v	Monthly						
Methane	% v/v	Monthly						

### Point 24- Gas 6

Pollutant	Unit	Monitoring Frequency	Date Sampled	Date Sampled	Date Sampled	Date Sampled	Date Sampled	Date Sampled
			29/06/2023	31/07/2023	3/08/2023	29/09/2023	30/10/2023	29/11/2023
			Date Obtained	Date Obtained	Date Obtained	Date Obtained	Date Obtained	Date Obtained
			29/06/2023	31/07/2023	2/11/2023	22/10/2023	31/10/2023	30/11/2023
			Sample Code	Sample Code	Sample Code	Sample Code	Sample Code	Sample Code
Carbon Dioxide	% v/v	Monthly	0.3	0.8	0.9	0.5	0.9	6.1
Methane	% v/v	Monthly	0	0	0.1	0	0	0

			Date Sampled	Date Sampled	Date Sampled	Date Sampled	Date Sampled	Date Sampled
			Date Obtained	Date Obtained	Date Obtained	Date Obtained	Date Obtained	Date Obtained
			Sample Code	Sample Code	Sample Code	Sample Code	Sample Code	Sample Code
Carbon Dioxide	% v/v	Monthly						
Methane	% v/v	Monthly						

### Point 25 - Gas interception trench

Pollutant	Unit	Monitoring Frequency	Date Sampled	Date Sampled	Date Sampled	Date Sampled	Date Sampled	Date Sampled
			29/06/2023	31/07/2023	3/08/2023	29/09/2023	30/10/2023	29/11/2023
			Date Obtained	Date Obtained	Date Obtained	Date Obtained	Date Obtained	Date Obtained
			29/06/2023	31/07/2023	2/11/2023	22/10/2023	31/10/2023	30/11/2023
			Sample Code	Sample Code	Sample Code	Sample Code	Sample Code	Sample Code
Carbon Dioxide	% v/v	Monthly	0.5	0.1	0.2	0.2	0.3	0.2
Methane	% v/v	Monthly	0.1	0.9	0.4	0.5	0.3	0.3

# Waste Managment Facility - 5293

			Date Sampled	Date Sampled	Date Sampled	Date Sampled	Date Sampled	Date Sampled
			Date Obtained	Date Obtained	Date Obtained	Date Obtained	Date Obtained	Date Obtained
			Sample Code	Sample Code	Sample Code	Sample Code	Sample Code	Sample Code
Carbon Dioxide	% v/v	Monthly						
Methane	% v/v	Monthly						

## RW1

			Date Sampled	Date Sampled	Date Sampled	Date Sampled	Date Sampled	Date Sampled
			29/06/2023	31/07/2023	3/08/2023	29/09/2023	30/10/2023	29/11/2023
			Date Obtained	Date Obtained	Date Obtained	Date Obtained	Date Obtained	Date Obtained
			29/06/2023	31/07/2023	2/11/2023	22/10/2023	31/10/2023	30/11/2023
			Sample Code	Sample Code	Sample Code	Sample Code	Sample Code	Sample Code
Carbon Dioxide	% v/v	Monthly	Well no installed yet			1.4	2.3	1.7
Methane	% v/v	Monthly				0	0	0.3

			Date Sampled	Date Sampled	Date Sampled	Date Sampled	Date Sampled	Date Sampled
			Date Obtained	Date Obtained	Date Obtained	Date Obtained	Date Obtained	Date Obtained
			Sample Code	Sample Code	Sample Code	Sample Code	Sample Code	Sample Code
Carbon Dioxide	% v/v	Monthly						
Methane	% v/v	Monthly						



# Waste Managment Facility - 5293

## Gas1

Pollutant	Unit	Monitoring Frequency	Date Sampled	Date Sampled	Date Sampled	Date Sampled	Date Sampled	Date Sampled
			29/06/2023	31/07/2023	3/08/2023	29/09/2023	30/10/2023	29/11/2023
			Date Obtained	Date Obtained	Date Obtained	Date Obtained	Date Obtained	Date Obtained
			29/06/2023	31/07/2023	2/11/2023	22/10/2023	31/10/2023	30/11/2023
			Sample Code	Sample Code	Sample Code	Sample Code	Sample Code	Sample Code
Carbon Dioxide	% v/v	Monthly	Unable to be located			2.7	3.1	7.6
Methane	% v/v	Monthly				0.1	0.1	0

			Date Sampled	Date Sampled	Date Sampled	Date Sampled	Date Sampled	Date Sampled
			Date Obtained	Date Obtained	Date Obtained	Date Obtained	Date Obtained	Date Obtained
			Sample Code	Sample Code	Sample Code	Sample Code	Sample Code	Sample Code
Carbon Dioxide	% v/v	Monthly						
Methane	% v/v	Monthly						

## Gas6

Pollutant	Unit	Monitoring Frequency	Date Sampled	Date Sampled	Date Sampled	Date Sampled	Date Sampled	Date Sampled
			29/06/2023	31/07/2023	3/08/2023	29/09/2023	30/10/2023	29/11/2023
			Date Obtained	Date Obtained	Date Obtained	Date Obtained	Date Obtained	Date Obtained
			29/06/2023	31/07/2023	2/11/2023	22/10/2023	31/10/2023	30/11/2023
			Sample Code	Sample Code	Sample Code	Sample Code	Sample Code	Sample Code
Carbon Dioxide	% v/v	Monthly	Unable to be located			0.5	0.8	7.3
Methane	% v/v	Monthly				0	0	0

			Date Sampled	Date Sampled	Date Sampled	Date Sampled	Date Sampled	Date Sampled
			Date Obtained	Date Obtained	Date Obtained	Date Obtained	Date Obtained	Date Obtained
			Sample Code	Sample Code	Sample Code	Sample Code	Sample Code	Sample Code
Carbon Dioxide	% v/v	Monthly						
Methane	% v/v	Monthly						

Point 27 - Inside all buildings	Unit	Monitoring Frequency	Date Sampled	Date Sampled	Date Sampled	Date Sampled
			Aug-23			
			Date Data Obtained	Date Data Obtained	Date Data Obtained	Date Data Obtained
			Aug-23			
			Sample Code	Sample Code	Sample Code	Sample Code
HCC Lunch Room Demountable						
Methane	% v/v	Quarterly	<0.0005			
HCC Toliet Demountable						
Methane	% v/v	Quarterly	<0.0005			
Recycling Shed						
Methane	% v/v	Quarterly	<0.0005			
Gatehouse/ Weighbridge						
Methane	% v/v	Quarterly	<0.0005			
Tools Storage Shed						
Methane	% v/v	Quarterly	<0.0005			
Equipment Shed						
Methane	% v/v	Quarterly	<0.0005			

## Waste Managment Facility - 5293

### Monitoring Point 2 - DGA

Pollutant	Unit	Monitoring Frequency	Start Date	Start Date	Start Date	Start Date
			24/05/2023	29.08.23		
			Data Collection Date	Data Collection Date	Data Collection Date	Data Collection Date
			29/08/2023	29.11.23		
			Sample Code	Sample Code	Sample Code	Sample Code
Particulates deposited Matter	g/m <sup>2</sup> /month	Quarterly	0.1	<0.3		

### Monitoring Point 3 - DGB

Pollutant	Unit	Monitoring Frequency	Start Date	Start Date	Start Date	Start Date
			24/05/2023	29.08.23		
			Data Collection Date	Data Collection Date	Data Collection Date	Data Collection Date
			29/08/2023	29.11.23		
			Sample Code	Sample Code	Sample Code	Sample Code
Particulates deposited Matter	g/m <sup>2</sup> /month	Quarterly	0.5	1.2		

### Monitoring Point 4 - DGC

Pollutant	Unit	Monitoring Frequency	Start Date	Start Date	Start Date	Start Date
			24/05/2023	29.08.23		
			Data Collection Date	Data Collection Date	Data Collection Date	Data Collection Date
			29/08/2023	29.11.23		
			Sample Code	Sample Code	Sample Code	Sample Code
Particulates deposited Matter	g/m <sup>2</sup> /month	Quarterly	1.5	0.9		

# Waste Managment Facility - 5293

## Monitoring Point 1 - LCH

Pollutant	Unit	Monitoring Frequency	Date Sampled	Date Sampled	Date Sampled	Date Sampled
			30/08/2023	29.11.23		
			Date Data Obtained	Date Data Obtained	Date Data Obtained	Date Data Obtained
			2/11/2023			
			Sample Code	Sample Code	Sample Code	Sample Code
			SE253182			
Alkalinity (as calcium carbonate)	mg/L	Quarterly	1900	1800		
Aluminium	mg/L	Yearly				
Arsenic	mg/L	Yearly				
Barium	mg/L	Yearly				
Benzene	mg/L	Yearly				
Biochemical oxygen demand	mg/L	Yearly				
Cadmium	mg/L	Yearly				
Calcium	mg/L	Quarterly	63	69		
Chemical oxygen demand	mg/L	Yearly				
Chloride	mg/L	Quarterly	1100	1300		
Chromium (hexavalent)	mg/L	Yearly				
Cobalt	mg/L	Yearly				
Conductivity	µS/cm	Quarterly	NT			
Copper	mg/L	Yearly				
Ethyl benzene	mg/L	Yearly				
Fluoride	mg/L	Yearly				
Lead	mg/L	Yearly				
Magnesium	mg/L	Quarterly	100	100		
Manganese	mg/L	Yearly				
Mercury	mg/L	Yearly				
Nitrate	mg/L	Quarterly	<0.1	<0.05		
Nitrite	mg/L	Quarterly	<0.005	<0.005		
Nitrogen (ammonia)	mg/L	Quarterly	NT			
Organochlorine pesticides	mg/L	Yearly				
Orgnochlorine pesticides	mg/L	Yearly				
pH	pH	Quarterly	7.10	7.04		
Phosphate	mg/L	Yearly				
Phosphorus (total)	mg/L	Quarterly	4.2	1.8		
Potassium	mg/L	Quarterly	120	110		
Sodium	mg/L	Quarterly	860	960		
Sulfate	mg/L	Quarterly	45	29		
Toluene	mg/L	Yearly				
Total chromium	mg/L	Yearly				
Total dissolved solids	mg/L	Quarterly	3200	4000		
Total Iron	mg/L	Yearly				
Total organic carbon	mg/L	Yearly				
Total petroleum hydrocarbons C6-C9	mg/L	Yearly				
C10-C14	mg/L	Yearly				
C15-C28	mg/L	Yearly				
C29-C36	mg/L	Yearly				
C10-C36 (Sum)	mg/L	Yearly				
Total Phenolics	mg/L	Yearly				
Xylene	mg/L	Yearly				
Zinc	mg/L	Yearly				

## Waste Managment Facility - 5293

### Monitoring Point 5 - SW1

Pollutant	Unit	Monitoring Frequency	Date Sampled	Date Sampled	Date Sampled	Date Sampled
			30/08/2023			
			Date Data Obtained	Date Data Obtained	Date Data Obtained	Date Data Obtained
			2/11/2023			
			Sample Code	Sample Code	Sample Code	Sample Code
Alkalinity (as calcium carbonate)	mg/L	Quarterly	Point no longer exsits			
Ammonia	mg/L	Quarterly				
Biochemical oxygen demand	mg/L	Quarterly				
Sulfate	mg/L	Quarterly				
Total Phenolics	mg/L	Yearly				

**Waste Managment Facility - 5293**

**Monitoring Point 6 - GWM1**

Pollutant	Unit	Monitoring frequency	Date Sampled	Date Sampled	Date Sampled	Date Sampled
			30/08/2023	29.11.23		
			Date Data Obtained	Date Data Obtained	Date Data Obtained	Date Data Obtained
			2/11/2023			
			Sample Code	Sample Code	Sample Code	Sample Code
			SE253182			
Alkalinity (as calcium carbonate)	mg/L	Quarterly	290	290		
Aluminium	mg/L	Yearly				
Ammonia	mg/L	Quarterly	0.03	0.01		
Arsenic	mg/L	Yearly				
Barium	mg/L	Yearly				
Benzene	mg/L	Yearly				
Biochemical oxygen demand	mg/L	Yearly				
Cadmium	mg/L	Yearly				
Calcium	mg/L	Quarterly	85	97		
Carbonate	mg/L	Quarterly	<1	<1		
Chemical oxygen demand	mg/L	Yearly				
Chloride	mg/L	Quarterly	4300	4100		
Chlorinated volatile compound	mg/L	Yearly				
Chromium (hexavalent)	mg/L	Yearly				
Cobalt	mg/L	Yearly				
Conductivity	µS/cm	Quarterly	13000	13000		
Copper	mg/L	Yearly				
Ethyl benzene	mg/L	Yearly				
Fluoride	mg/L	Yearly				
Lead	mg/L	Yearly				
Magnesium	mg/L	Quarterly	290	300		
Manganese	mg/L	Yearly				
Mercury	mg/L	Yearly				
Nitrogen Oxides	mg/L	Yearly				
Organochlorine pesticides	mg/L	Yearly				
Organophosphate pesticides	mg/L	Yearly				
pH	pH	Quarterly	6.51	6.59		
Phosphate	mg/L	Yearly				
Phosphorus (Total)	mg/L	Quarterly	0.97	1		
Potassium	mg/L	Quarterly	3	2.9		
Salinity	mg/L	Quarterly	8300	8300		
Sodium	mg/L	Quarterly	2000	2100		
Sulfate	mg/L	Quarterly	300	260		
Toluene	mg/L	Yearly				
Total chromium	mg/L	Yearly				
Total dissolved solids	mg/L	Quarterly	7000	8800		
Total organic carbon	mg/L	Yearly				
Total petroleum hydrocarbons C6-C9	mg/L	Yearly				
C10-C14	mg/L	Yearly				
C15-C28	mg/L	Yearly				
C29-C36	mg/L	Yearly				
C10-C36 (Sum)	mg/L	Yearly				
Total Phenolics	mg/L	Yearly				
Xylene	mg/L	Yearly				
Zinc	mg/L	Yearly				



**Waste Managment Facility - 5293**

**Monitoring Point 7 - GWM2**

Pollutant	Unit	Monitoring frequency	Date Sampled	Date Sampled	Date Sampled	Date Sampled
			30/08/2023	29.11.23		
			Date Data Obtained	Date Data Obtained	Date Data Obtained	Date Data Obtained
			2/11/2023			
			Sample Code	Sample Code	Sample Code	Sample Code
			SE253182			
Alkalinity (as calcium carbonate)	mg/L	Quarterly	300	290		
Aluminium	mg/L	Yearly				
Ammonia	mg/L	Quarterly	0.02	<0.01		
Arsenic	mg/L	Yearly				
Barium	mg/L	Yearly				
Benzene	mg/L	Yearly				
Biochemical oxygen demand	mg/L	Yearly				
Cadmium	mg/L	Yearly				
Calcium	mg/L	Quarterly	100	97		
Carbonate	mg/L	Quarterly	<1	<1		
Chemical oxygen demand	mg/L	Yearly				
Chloride	mg/L	Quarterly	4700	4600		
Chlorinated volatile compound	mg/L	Yearly				
Chromium (hexavalent)	mg/L	Yearly				
Cobalt	mg/L	Yearly				
Conductivity	µS/cm	Quarterly	14000	14000		
Copper	mg/L	Yearly				
Ethyl benzene	mg/L	Yearly				
Fluoride	mg/L	Yearly				
Lead	mg/L	Yearly				
Magnesium	mg/L	Quarterly	290	310		
Manganese	mg/L	Yearly				
Mercury	mg/L	Yearly				
Nitrogen Oxides	mg/L	Yearly				
Organochlorine pesticides	mg/L	Yearly				
Organophosphate pesticides	mg/L	Yearly				
pH	pH	Quarterly	6.51	6.32		
Phosphate	mg/L	Yearly				
Phosphorus (Total)	mg/L	Quarterly	0.61	2.4		
Potassium	mg/L	Quarterly	1.3	1.4		
Salinity	mg/L	Quarterly	9000	9100		
Sodium	mg/L	Quarterly	2100	3700		
Sulfate	mg/L	Quarterly	290	270		
Toluene	mg/L	Yearly				
Total chromium	mg/L	Yearly				
Total dissolved solids	mg/L	Quarterly	9100	9800		
Total organic carbon	mg/L	Yearly				
Total petroleum hydrocarbons C6-C9	mg/L	Yearly				
C10-C14	mg/L	Yearly				
C15-C28	mg/L	Yearly				
C29-C36	mg/L	Yearly				
C10-C36 (Sum)	mg/L	Yearly				
Total Phenolics	mg/L	Yearly				
Xylene	mg/L	Yearly				
Zinc	mg/L	Yearly				

**Waste Managment Facility - 5293**

**Monitoring Point 8 - GWM3**

Pollutant	Unit	Monitoring frequency	Date Sampled	Date Sampled	Date Sampled	Date Sampled
			30/08/2023	29.11.23		
			Date Data Obtained	Date Data Obtained	Date Data Obtained	Date Data Obtained
			2/11/2023			
			Sample Code	Sample Code	Sample Code	Sample Code
			SE253182			
Alkalinity (as calcium carbonate)	mg/L	Quarterly	530	290		
Aluminium	mg/L	Yearly				
Ammonia	mg/L	Quarterly	0.03	<0.01		
Arsenic	mg/L	Yearly				
Barium	mg/L	Yearly				
Benzene	mg/L	Yearly				
Biochemical oxygen demand	mg/L	Yearly				
Cadmium	mg/L	Yearly				
Calcium	mg/L	Quarterly	120	110		
Carbonate	mg/L	Quarterly	<1	<1		
Chemical oxygen demand	mg/L	Yearly				
Chloride	mg/L	Quarterly	7100	7300		
Chlorinated volatile compound	mg/L	Yearly				
Chromium (hexavalent)	mg/L	Yearly				
Cobalt	mg/L	Yearly				
Conductivity	µS/cm	Quarterly	21000	21000		
Copper	mg/L	Yearly				
Ethyl benzene	mg/L	Yearly				
Fluoride	mg/L	Yearly				
Lead	mg/L	Yearly				
Magnesium	mg/L	Quarterly	570	550		
Manganese	mg/L	Yearly				
Mercury	mg/L	Yearly				
Nitrogen Oxides	mg/L	Yearly				
Organochlorine pesticides	mg/L	Yearly				
Organophosphate pesticides	mg/L	Yearly				
pH	pH	Quarterly	6.11	6.2		
Phosphate	mg/L	Yearly				
Phosphorus (Total)	mg/L	Quarterly	0.49	0.67		
Potassium	mg/L	Quarterly	3.4	3.1		
Salinity	mg/L	Quarterly	14000	14000		
Sodium	mg/L	Quarterly	3500	3700		
Sulfate	mg/L	Quarterly	570	560		
Toluene	mg/L	Yearly				
Total chromium	mg/L	Yearly				
Total dissolved solids	mg/L	Quarterly	12000	16000		
Total organic carbon	mg/L	Yearly				
Total petroleum hydrocarbons C6-C9	mg/L	Yearly				
C10-C14	mg/L	Yearly				
C15-C28	mg/L	Yearly				
C29-C36	mg/L	Yearly				
C10-C36 (Sum)	mg/L	Yearly				
Total Phenolics	mg/L	Yearly				
Xylene	mg/L	Yearly				
Zinc	mg/L	Yearly				

**Waste Managment Facility - 5293**

**Monitoring Point 9 - GWM4**

Pollutant	Unit	Monitoring frequency	Date Sampled	Date Sampled	Date Sampled	Date Sampled
			30/08/2023	29.11.2023		
			Date Data Obtained	Date Data Obtained	Date Data Obtained	Date Data Obtained
			2/11/2023			
			Sample Code	Sample Code	Sample Code	Sample Code
			SE253182			
Alkalinity (as calcium carbonate)	mg/L	Quarterly	92	94		
Aluminium	mg/L	Yearly				
Ammonia	mg/L	Quarterly	0.02	<0.01		
Arsenic	mg/L	Yearly				
Barium	mg/L	Yearly				
Benzene	mg/L	Yearly				
Biochemical oxygen demand	mg/L	Yearly				
Cadmium	mg/L	Yearly				
Calcium	mg/L	Quarterly	20	21		
Carbonate	mg/L	Quarterly	<1	<1		
Chemical oxygen demand	mg/L	Yearly				
Chloride	mg/L	Quarterly	4000	4000		
Chlorinated volatile compound	mg/L	Yearly				
Chromium (hexavalent)	mg/L	Yearly				
Cobalt	mg/L	Yearly				
Conductivity	µS/cm	Quarterly	12,000	12,000		
Copper	mg/L	Yearly				
Ethyl benzene	mg/L	Yearly				
Fluoride	mg/L	Yearly				
Lead	mg/L	Yearly				
Magnesium	mg/L	Quarterly	270	310		
Manganese	mg/L	Yearly				
Mercury	mg/L	Yearly				
Nitrogen Oxides	mg/L	Yearly				
Organochlorine pesticides	mg/L	Yearly				
Organophosphate pesticides	mg/L	Yearly				
pH	pH	Quarterly	6.21	6.37		
Phosphate	mg/L	Yearly				
Phosphorus (Total)	mg/L	Quarterly	0.13	0.06		
Potassium	mg/L	Quarterly	1.4	1.2		
Salinity	mg/L	Quarterly	7600	7700		
Sodium	mg/L	Quarterly	1700	1900		
Sulfate	mg/L	Quarterly	150	130		
Toluene	mg/L	Yearly				
Total chromium	mg/L	Yearly				
Total dissolved solids	mg/L	Quarterly	7500	7800		
Total organic carbon	mg/L	Yearly				
Total petroleum hydrocarbons C6-C9	mg/L	Yearly				
C10-C14	mg/L	Yearly				
C15-C28	mg/L	Yearly				
C29-C36	mg/L	Yearly				
C10-C36 (Sum)	mg/L	Yearly				
Total Phenolics	mg/L	Yearly				
Xylene	mg/L	Yearly				
Zinc	mg/L	Yearly				

**Waste Managment Facility - 5293**

**Monitoring Point 10 - GWM6**

Pollutant	Unit	Monitoring frequency	Date Sampled	Date Sampled	Date Sampled	Date Sampled
			30/08/2023	29.11.23		
			Date Data Obtained	Date Data Obtained	Date Data Obtained	Date Data Obtained
			2/11/2023			
			Sample Code	Sample Code	Sample Code	Sample Code
			SE253182			
Alkalinity (as calcium carbonate)	mg/L	Quarterly	91	81		
Aluminium	mg/L	Yearly				
Ammonia	mg/L	Quarterly	0.05	<0.01		
Arsenic	mg/L	Yearly				
Barium	mg/L	Yearly				
Benzene	mg/L	Yearly				
Biochemical oxygen demand	mg/L	Yearly				
Cadmium	mg/L	Yearly				
Calcium	mg/L	Quarterly	23	180		
Carbonate	mg/L	Quarterly	<1	<1		
Chemical oxygen demand	mg/L	Yearly				
Chloride	mg/L	Quarterly	94	850		
Chlorinated volatile compound	mg/L	Yearly				
Chromium (hexavalent)	mg/L	Yearly				
Cobalt	mg/L	Yearly				
Conductivity	µS/cm	Quarterly	500	2,900		
Copper	mg/L	Yearly				
Ethyl benzene	mg/L	Yearly				
Fluoride	mg/L	Yearly				
Lead	mg/L	Yearly				
Magnesium	mg/L	Quarterly	11	100		
Manganese	mg/L	Yearly				
Mercury	mg/L	Yearly				
Nitrogen Oxides	mg/L	Yearly				
Organochlorine pesticides	mg/L	Yearly				
Organophosphate pesticides	mg/L	Yearly				
pH	pH	Quarterly	7.75	6.89		
Phosphate	mg/L	Yearly				
Phosphorus (Total)	mg/L	Quarterly	0.17	2.6		
Potassium	mg/L	Quarterly	0.5	2		
Salinity	mg/L	Quarterly	330	1900		
Sodium	mg/L	Quarterly	59	380		
Sulfate	mg/L	Quarterly	17	30		
Toluene	mg/L	Yearly				
Total chromium	mg/L	Yearly				
Total dissolved solids	mg/L	Quarterly	290	2300		
Total organic carbon	mg/L	Yearly				
Total petroleum hydrocarbons C6-C9	mg/L	Yearly				
C10-C14	mg/L	Yearly				
C15-C28	mg/L	Yearly				
C29-C36	mg/L	Yearly				
C10-C36 (Sum)	mg/L	Yearly				
Total Phenolics	mg/L	Yearly				
Xylene	mg/L	Yearly				
Zinc	mg/L	Yearly				

**Waste Managment Facility - 5293**

**Monitoring Point 11 - GWM7**

Pollutant	Unit	Monitoring frequency	Date Sampled	Date Sampled	Date Sampled	Date Sampled
			30/08/2023	29.11.23		
			Date Data Obtained	Date Data Obtained	Date Data Obtained	Date Data Obtained
			2/11/2023			
			Sample Code	Sample Code	Sample Code	Sample Code
			SE253182			
Alkalinity (as calcium carbonate)	mg/L	Quarterly	200	210		
Aluminium	mg/L	Yearly				
Ammonia	mg/L	Quarterly	0.02	<0.01		
Arsenic	mg/L	Yearly				
Barium	mg/L	Yearly				
Benzene	mg/L	Yearly				
Biochemical oxygen demand	mg/L	Yearly				
Cadmium	mg/L	Yearly				
Calcium	mg/L	Quarterly	37	38		
Carbonate	mg/L	Quarterly	<1	<1		
Chemical oxygen demand	mg/L	Yearly				
Chloride	mg/L	Quarterly	3600	3600		
Chlorinated volatile compound	mg/L	Yearly				
Chromium (hexavalent)	mg/L	Yearly				
Cobalt	mg/L	Yearly				
Conductivity	µS/cm	Quarterly	11,000	11,000		
Copper	mg/L	Yearly				
Ethyl benzene	mg/L	Yearly				
Fluoride	mg/L	Yearly				
Lead	mg/L	Yearly				
Magnesium	mg/L	Quarterly	160	160		
Manganese	mg/L	Yearly				
Mercury	mg/L	Yearly				
Nitrogen Oxides	mg/L	Yearly				
Organochlorine pesticides	mg/L	Yearly				
Organophosphate pesticides	mg/L	Yearly				
pH	pH	Quarterly	5.98	6.15		
Phosphate	mg/L	Yearly				
Phosphorus (Total)	mg/L	Quarterly	0.1	0.13		
Potassium	mg/L	Quarterly	0.8	0.9		
Salinity	mg/L	Quarterly	7200	7200		
Sodium	mg/L	Quarterly	1900	2000		
Sulfate	mg/L	Quarterly	110	90		
Toluene	mg/L	Yearly				
Total chromium	mg/L	Yearly				
Total dissolved solids	mg/L	Quarterly	6300	7100		
Total organic carbon	mg/L	Yearly				
Total petroleum hydrocarbons C6-C9	mg/L	Yearly				
C10-C14	mg/L	Yearly				
C15-C28	mg/L	Yearly				
C29-C36	mg/L	Yearly				
C10-C36 (Sum)	mg/L	Yearly				
Total Phenolics	mg/L	Yearly				
Xylene	mg/L	Yearly				
Zinc	mg/L	Yearly				

**Waste Managment Facility - 5293**

**Monitoring Point 12 - GWM8**

Pollutant	Unit	Monitoring frequency	Date Sampled	Date Sampled	Date Sampled	Date Sampled
			30/08/2023	29.11.2023		
			Date Data Obtained	Date Data Obtained	Date Data Obtained	Date Data Obtained
			2/11/2023			
			Sample Code	Sample Code	Sample Code	Sample Code
			SE253182			
Alkalinity (as calcium carbonate)	mg/L	Quarterly	200	470		
Aluminium	mg/L	Yearly				
Ammonia	mg/L	Quarterly	0.02	0.04		
Arsenic	mg/L	Yearly				
Barium	mg/L	Yearly				
Benzene	mg/L	Yearly				
Biochemical oxygen demand	mg/L	Yearly				
Cadmium	mg/L	Yearly				
Calcium	mg/L	Quarterly	37	130		
Carbonate	mg/L	Quarterly	<1	<1		
Chemical oxygen demand	mg/L	Yearly				
Chloride	mg/L	Quarterly	3600	5400		
Chlorinated volatile compound	mg/L	Yearly				
Chromium (hexavalent)	mg/L	Yearly				
Cobalt	mg/L	Yearly				
Conductivity	µS/cm	Quarterly	11,000	16,000		
Copper	mg/L	Yearly				
Ethyl benzene	mg/L	Yearly				
Fluoride	mg/L	Yearly				
Lead	mg/L	Yearly				
Magnesium	mg/L	Quarterly	160	360		
Manganese	mg/L	Yearly				
Mercury	mg/L	Yearly				
Nitrogen Oxides	mg/L	Yearly				
Organochlorine pesticides	mg/L	Yearly				
Organophosphate pesticides	mg/L	Yearly				
pH	pH	Quarterly	7.09	6.52		
Phosphate	mg/L	Yearly				
Phosphorus (Total)	mg/L	Quarterly	0.1	0.61		
Potassium	mg/L	Quarterly	0.8	4.1		
Salinity	mg/L	Quarterly	7200	10000		
Sodium	mg/L	Quarterly	1900	2700		
Sulfate	mg/L	Quarterly	110	200		
Toluene	mg/L	Yearly				
Total chromium	mg/L	Yearly				
Total dissolved solids	mg/L	Quarterly	6300	11000		
Total organic carbon	mg/L	Yearly				
Total petroleum hydrocarbons C6-C9	mg/L	Yearly				
C10-C14	mg/L	Yearly				
C15-C28	mg/L	Yearly				
C29-C36	mg/L	Yearly				
C10-C36 (Sum)	mg/L	Yearly				
Total Phenolics	mg/L	Yearly				
Xylene	mg/L	Yearly				
Zinc	mg/L	Yearly				



# Waste Managment Facility - 5293

## Monitoring Point 13 - GWM9

Pollutant	Unit	Monitoring frequency	Date Sampled	Date Sampled	Date Sampled	Date Sampled
			30/08/2023	29.11.23		
			Date Data Obtained	Date Data Obtained	Date Data Obtained	Date Data Obtained
			2/11/2023			
			Sample Code	Sample Code	Sample Code	Sample Code
			SE253182			
Alkalinity (as calcium carbonate)	mg/L	Quarterly	240	290		
Aluminium	mg/L	Yearly				
Ammonia	mg/L	Quarterly	0.62	0.25		
Arsenic	mg/L	Yearly				
Barium	mg/L	Yearly				
Benzene	mg/L	Yearly				
Biochemical oxygen demand	mg/L	Yearly				
Cadmium	mg/L	Yearly				
Calcium	mg/L	Quarterly	18	58		
Carbonate	mg/L	Quarterly	<1	<1		
Chemical oxygen demand	mg/L	Yearly				
Chloride	mg/L	Quarterly	2200	2500		
Chlorinated volatile compound	mg/L	Yearly				
Chromium (hexavalent)	mg/L	Yearly				
Cobalt	mg/L	Yearly				
Conductivity	µS/cm	Quarterly	7,300	8,200		
Copper	mg/L	Yearly				
Ethyl benzene	mg/L	Yearly				
Fluoride	mg/L	Yearly				
Lead	mg/L	Yearly				
Magnesium	mg/L	Quarterly	38	140		
Manganese	mg/L	Yearly				
Mercury	mg/L	Yearly				
Nitrogen Oxides	mg/L	Yearly				
Organochlorine pesticides	mg/L	Yearly				
Organophosphate pesticides	mg/L	Yearly				
pH	pH	Quarterly	7.28	6.52		
Phosphate	mg/L	Yearly				
Phosphorus (Total)	mg/L	Quarterly	5.2	6.5		
Potassium	mg/L	Quarterly	6.9	9.1		
Salinity	mg/L	Quarterly	4800	5300		
Sodium	mg/L	Quarterly	780	1700		
Sulfate	mg/L	Quarterly	110	120		
Toluene	mg/L	Yearly				
Total chromium	mg/L	Yearly				
Total dissolved solids	mg/L	Quarterly	3100	4900		
Total organic carbon	mg/L	Yearly				
Total petroleum hydrocarbons C6-C9	mg/L	Yearly				
C10-C14	mg/L	Yearly				
C15-C28	mg/L	Yearly				
C29-C36	mg/L	Yearly				
C10-C36 (Sum)	mg/L	Yearly				
Total Phenolics	mg/L	Yearly				
Xylene	mg/L	Yearly				
Zinc	mg/L	Yearly				

## Pollutant Monitoring - Correction Log

EPL No: 5293

Sample Point	Pollutant	Sample Date and Time	Original Data	Corrected Data	Date Originally Published	Reason
27- Lunch Room	Methane	Aug-23	NIL	<0.0005	16/10/2023	Data previously not included in publishing document
27-Toliet	Methane	Aug-23	NIL	<0.0005	16/10/2023	Data previously not included in publishing document
27- Recycling Shed	Methane	Aug-23	NIL	<0.0005	16/10/2023	Data previously not included in publishing document
27- Gatehouse/weighbridge	Methane	Aug-23	NIL	<0.0005	16/10/2023	Data previously not included in publishing document
27- Tools storage shed	Methane	Aug-23	NIL	<0.0005	16/10/2023	Data previously not included in publishing document
27- Equipment shed	Methane	Aug-23	NIL	<0.0005	16/10/2023	Data previously not included in publishing document

## Pollutant Monitoring - notes

EPL No: 5293

Sample Point	Pollutant	Note
5 - SW1	All	Sampling and analysis of surface water from a sedimentation dam was not conducted at SW1 has been destroyed during the current civil works of a new landfill cell.