

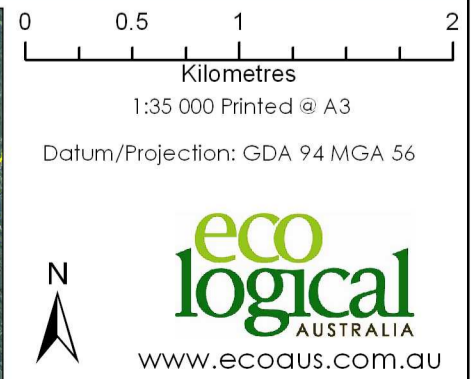
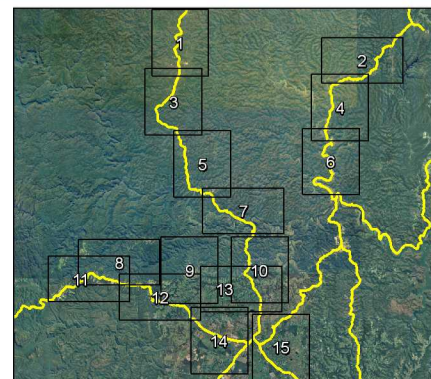


## Conservation Priority and Vegetation Condition - Map 14

Hawkesbury City Council

### Legend

Roads	Threatened Flora	Conservation Priority	Condition
Surveilled	Acacia pubescens (ELA)	High	Good
Not Surveilled	Grevillea juniperina subspecies juniperina (ELA)	Medium	Medium
	Acacia pubescens (DECCW)	Low	Poor
	Grevillea juniperina subsp. juniperina (DECCW)		
	Other (DECCW)		



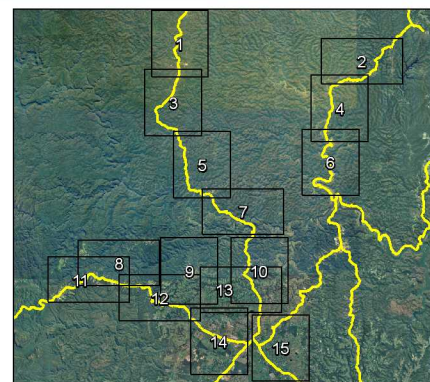


## Conservation Priority and Vegetation Condition - Map 15

Hawkesbury City Council

### Legend

<b>Roads</b>		<b>Threatened Flora</b>		<b>Conservation Priority</b>		<b>Condition</b>	
—	Surveyed	■	Acacia pubescens (ELA)	—	High	G	Good
- - -	Not Surveyed	■	Grevillea junipera subspecies junipera (ELA)	—	Medium	M	Medium
■	Significant Weeds Present	●	Acacia pubescens (DECCW)	—	Low	P	Poor
■	<i>Cinnamomum camphora</i>	●	Grevillea juniperina subsp. juniperina (DECCW)				
		●	Other (DECCW)				



0 0.5 1 2  
Kilometres  
1:35 000 Printed @ A3  
Datum/Projection: GDA 94 MGA 56

**eco logical**  
AUSTRALIA  
www.ecoaus.com.au