

HAWKESBURY CITY COUNCIL

OPERATIONAL PLAN

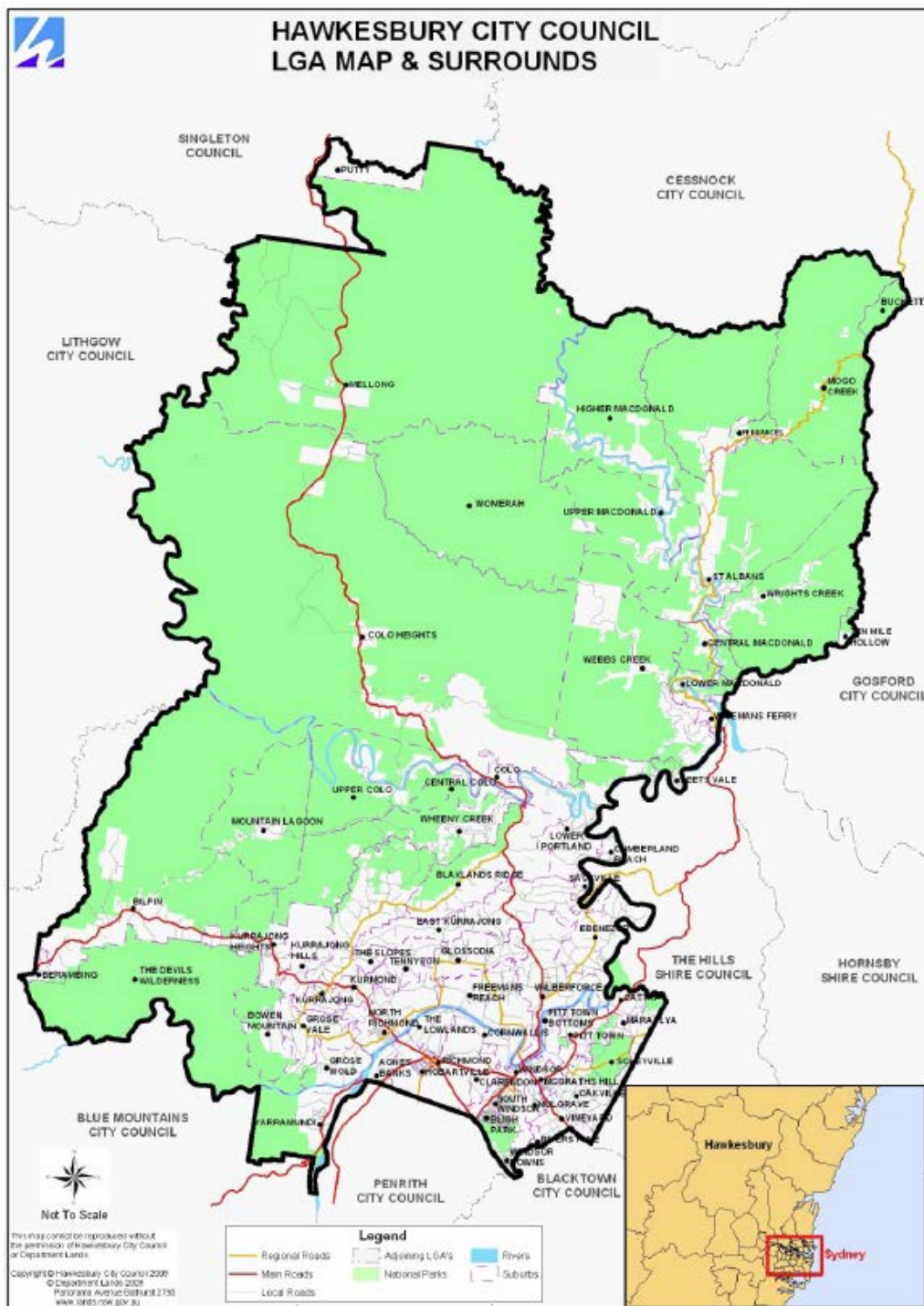
2014/2015

Part 2

Rates
Pricing Methodology
Borrowings
Fees & Charges



SHAPING OUR FUTURE



Hawkesbury City Council

Address: 366 George Street
WINDSOR NSW 2756

Mailing Address: PO Box 146
WINDSOR NSW 2756

Phone: (02)4560 4444

Fax: (02) 4587 7740

Email: council@hawkesbury.nsw.gov.au

Office Hours: Monday to Friday 8:30am – 5:00pm

Council Website: www.hawkesbury.nsw.gov.au

Table of Contents

About this Operational Plan	ii
How will progress on this Plan be reported?	ii
How our Plans work together	iii
Revenue Policy, Rates and Charges, Fees and Charges and Proposed Borrowings	1
Statement of Revenue Policy	3
Types of Revenue	3
Rates and Charges – 2014/2015	4
Revenue Policy – Rating	4
Ordinary Rates 2014/2015.....	6
Special Rates	7
Annual Charges.....	8
Pensioner Concessions	11
Fees and Charges	12
Fee Pricing Policy.....	12
Community Rooms – Deerubbin Centre	13
Financial Assistance given by Council	14
Goods and Services Tax (GST).....	15
Kerbing and Guttering Contributions by Adjoining Owners	15
Interest on Overdue Rates.....	15
Interest on Overdue Sundry Debts.....	15
Legal Charges	15
Payment of Interest on Securities	15
Review of Development Contribution Rates.....	16
Proposed Borrowings.....	16
Fees and Charges	17

About this Operational Plan

The Operational Plan supports Council's Delivery Program 2013 - 2017. It identifies the individual projects, programs and activities that will be undertaken for 2014/2015 to achieve the commitments made in the Delivery Program.

The main elements of this Operational Plan are:

1. Projects, Programs and Activities to be undertaken by Council throughout 2014/2015.
2. Estimated Income and Expenditure
3. A Statement of Revenue Policy. The Statement includes:
 - Ordinary rates and special rates
 - Council's pricing methodology
 - Financial assistance given by Council
 - Borrowings
 - Fees and Charges

The Operational Plan is divided in two parts:

Part 1

- **2014/2015 Highlights:** a snapshot of works and contributions included in the 2014/2015 Operational Plan.
- **Projects, Programs and Activities:** a list of actions for 2014/2015.
- **2014/2015 Operational Plan Project Funding:** a list of funding allocated to projects that will be undertaken as part of the actions included in the 2014/2015 Operational Plan.
- **Budgeted Income Statement:** a high level summary of the projected net result of Council.
- **CSP Theme Budget Estimates:** provides both summary and detailed breakdowns of the budget estimates for each of the Themes identified in the 2013-2032 Community Strategic Plan.
- **Capital Works Program:** itemises the capital works to be undertaken by Council in 2014/2015.
- **Infrastructure Renewal Program:** itemises the works to be undertaken by Council in 2014/2015 that are funded by an approved Special Rate Variation aimed at funding the renewal of roads, buildings and parks.

Part 2

Contains the ordinary rates and special rates, pricing methodology, financial assistance given by Council, borrowings and fees and charges component of the Statement of Revenue Policy.

How will progress on this Plan be reported?

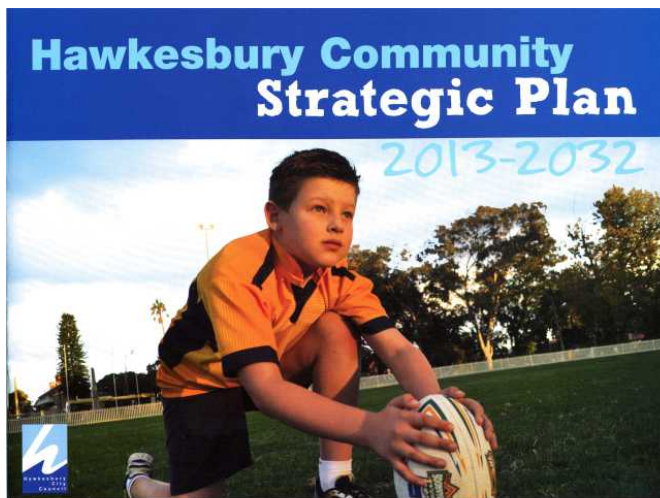
Reports will be prepared as follows:

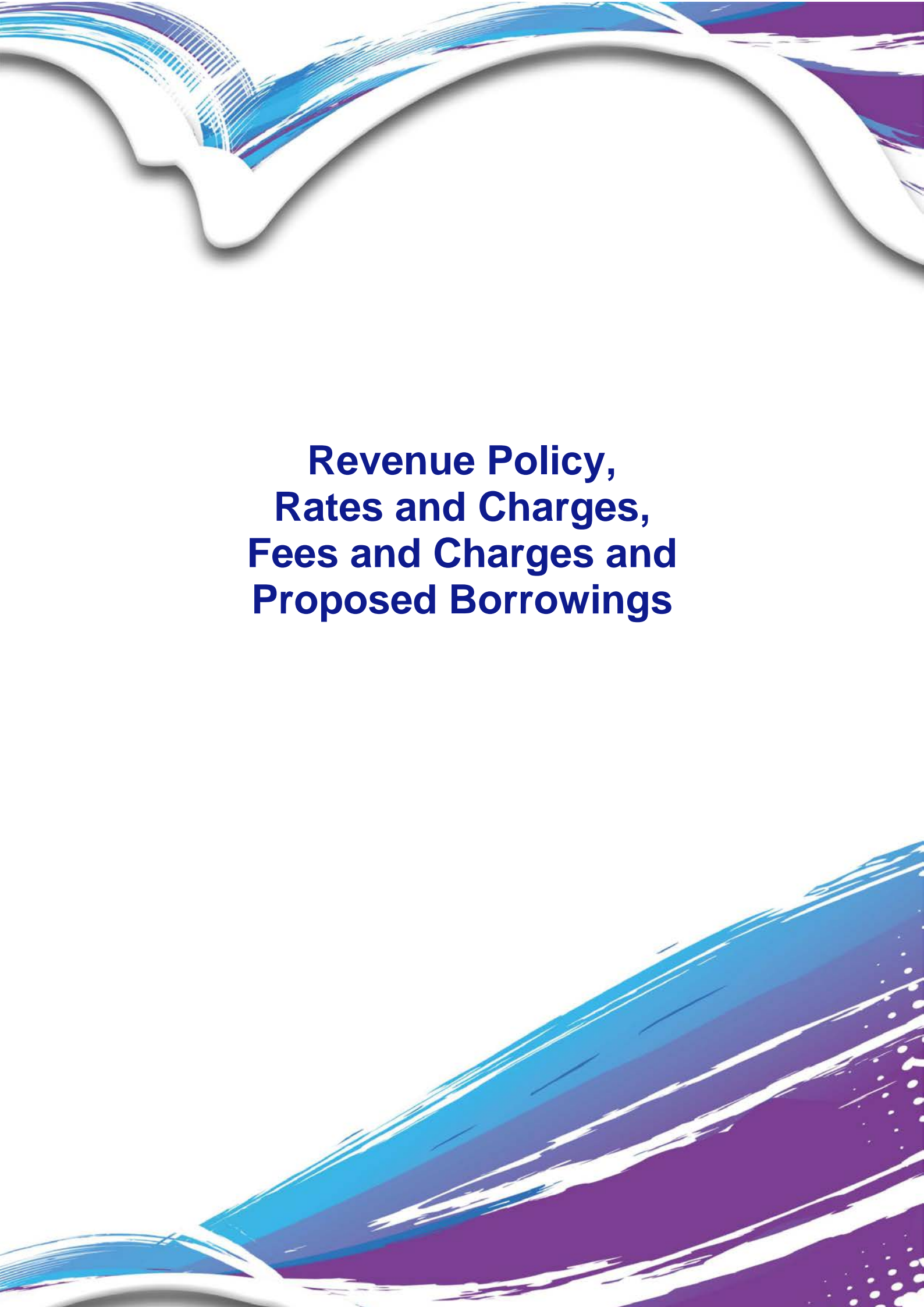
Every quarter: Budget Review Statements with respect to the Operational Plan will be reported to Council.

Every six months: Progress Reports with respect to the principle activities in the Delivery Program will be reported to Council. The projects, programs and activities of the relevant Operational Plan will be used as the basis of this report.

Annually: Annual Report on the achievements in implementing the Delivery Program and the Operational Plan regarding effectiveness of the principle activities undertaken in achieving the strategies in the Community Strategic Plan. Also includes copy of Council's audited financial reports. The Annual Report is provided to the Office of Local Government.

How our Plans work together





Revenue Policy, Rates and Charges, Fees and Charges and Proposed Borrowings

Statement of Revenue Policy

Local Government is the tier of Government which is closest to the people. Hawkesbury City Council exists to provide a wide range of services for the benefit of its local community. Council has to operate in a complex, legislative, economic and social framework. With participation of the community, services and facilities are provided in an efficient, effective and a businesslike manner.

The businesslike approach in the provision of these services and facilities, takes into consideration the following:

- A large part of Council's revenue comes from ratepayers who expect a certain level and quality of service for their contribution by rates.
- Council's pricing policies and budgets are developed by representatives of the community.
- Council receives grants from other spheres of Government, which may prescribe policies and pricing practices.
- Commonwealth and State legislation is often prescriptive in relation to certain areas of the power of Local Government.

The traditional role of councils to provide physical and property based services has evolved into a far more complex one, which involves the provision of a wide range of physical, social and recreational services and facilities. Communities are demanding both a wider range and higher quality of service. Operating in an economic environment of tight fiscal and financial constraint, the availability of additional funds from other levels of government has been restricted.

It is within this context that the Statement of Revenue Policy has been developed for the 2014/2015 Financial Year.

Types of Revenue

The sources of funds to enable Council to carry out its works and services and provision of facilities are from the following revenue categories:

- Rates;
- Annual charges for services;
- Fees for services;
- Federal and State Government grants;
- Borrowings; and
- Earnings from investments and entrepreneurial activities.

Critical to the development of the Statement of Revenue Policy is that the principles of efficiency, effectiveness and equity are demonstrated.

Efficiency ensures that resources are devoted to the most valuable ends as determined by Council, whilst using as few resources as possible. It relates to the cost at which services and facilities as desired by the community are delivered or provided.

Effectiveness relates to the satisfaction of stated objectives so that outcomes of decisions and the needs and demands of consumers are taken into consideration. Effectiveness is clearly demonstrated by the relative service standards or qualities to the satisfaction of a particular group's needs.

Equity ensures that services are provided to those who need them, even though they may be unable to pay for the particular service.

This document provides pricing policies for rates, annual charges for services and fees for specific services provided by Council.

Rates and Charges – 2014/2015

Revenue Policy – Rating

Rate Pegging

The NSW Government introduced rate pegging in 1987. Rate pegging limits the amount that Council can increase its rate revenue from one year to the next by a nominated percentage.

The Independent Pricing and Regulatory Tribunal has determined the rate pegging amount for 2014/2015 is 2.3%. Revenue figures quoted for general rates are prepared on the basis of this percentage increase plus an allowable increase to recover abandonments in line with the relevant provisions of the Act.

General income comprises income from ordinary rates and special rates, if applicable. It does not include income from Waste Management service charges, Windsor Sewer Scheme service charges or Sullage service charges.

Valuations

Rates are assessed on a rate in the dollar as a product of the land value supplied by the Valuer General. The Valuation of Land Act requires the Council to assess the rates on the most recent values provided by the Valuer General. A re-valuation of the Hawkesbury Local Government Area (LGA) took place in 2011. These valuations were used for the first time for rating purposes in 2012/2013, were used in 2013/2014 and will be used again in 2014/2015. The rates levied in the 2014/2015 year will be based on land values totalling \$8,222,663,968 as at 1 July 2014, as determined by the NSW Valuer General.

Rating Categories

In accordance with Section 514 of the Local Government Act 1993 (Act), each parcel of land within the LGA has been categorised for rating purposes and owners are notified on their annual rate notice.

Under Section 554 of the Act all land is rateable unless it is exempt from rating. Sections 555 and 556 of the Act define the categories under which a parcel of land must fall in order to be eligible for exemption from rating. Ratepayers that are eligible under these sections may apply to Council for exemption from rating.

The Act also provides for all rateable properties to be categorised into one of four categories of ordinary rates as follows:

- Farmland Category
- Mining Category
- Residential Category
- Business Category

For 2014/2015, Council will levy rates on the following categories and sub-categories:

Farmland Category

This Category includes any parcel of rateable land valued as one assessment and the dominant use of the land is for farming. The farming activity must have a significant and substantial commercial purpose or character and must be engaged in for the purpose of profit on a continuous or repetitive basis (whether or not a profit is actually made). Properties which meet these criteria are categorised as "Farmland".

Residential Category

This Category includes any rateable parcel of land valued as one assessment and the dominant use is for residential accommodation; or if vacant land is zoned or otherwise designated for use for residential purposes under an environmental planning instrument; or is rural residential land.

Rural Residential Sub - Category

Council has established a Sub-Category within its Residential Category to incorporate land which can be classified as Rural Residential in accordance with the provisions of the Act. This Sub-Category includes land that:

- a) is the site of a dwelling, and
- b) is not less than 2 hectares and not more than 40 hectares in area, and
- c) is either:
 - (i) not zoned or otherwise designated for use under an environmental planning instrument, or
 - (ii) zoned or otherwise designated for use under such an instrument for non-urban purposes, and
- d) does not have a significant and substantial commercial purpose or character.

Residential land falling outside the definition of Rural Residential land is classified as Residential.

Business Category

This Category includes rateable land that cannot be classified as farmland, residential or mining. Council has three sub-categories established within the Business Category as follows:

- **Business Area 1** – Business rated properties within defined areas in Richmond, Windsor, Vineyard and Mulgrave.

The defined area for Richmond is the area is bounded by Lennox Street, Bourke Street, Windsor Street, Hobart Street, Pitt Street, Francis Street, March Street and Castlereagh Road.

The defined area for Windsor is the area bounded by the Railway Line, Rickaby's Creek, Hawkesbury River, Bridge Street and South Creek.

The defined area for Vineyard and Mulgrave is the area is bounded by Windsor Road, South Creek, Railway Road South and Bandon Road.

- **Business Area 2** – Business rated properties within defined areas in North Richmond and South Windsor.

The defined area for North Richmond is the area is bounded by a Radius of 650m from the Centre Point of the intersection of Bells Line of Road, Beaumont Avenue and Grose Vale Road.

The defined area for South Windsor is the area bounded by Macquarie Street, Woods Road, South Creek and the Railway Line.

- **Business Area Other** – All other business rated properties not falling within any of the defined areas in Richmond, Windsor, Vineyard, Mulgrave, North Richmond and South Windsor.

Rating Method

Council determines by way of a resolution whether an ordinary rate that it levies in respect of any category or sub-category is subject to a minimum rate or whether it incorporates a base amount. A minimum rate or base amount is applied across all the relevant category or sub-category. Council may have a minimum rate for some categories or sub-categories, and a base amount for other categories or sub-categories.

Minimum Rate

If Council has resolved that a Minimum Rate applies to a category or sub-category, the minimum rate is applied to each respective property where the ordinary rates resulting from applying the ad valorem amount (rate in the dollar) to the land value of the property falls below a specified level, this being the Minimum Rate. In these cases, the Minimum Rate would be payable.

Base Amount

Council may levy up to 50% of its rating income (notional yield) within a category or sub-category by way of a Base Amount. If Council has resolved that a Base Amount applies to a category or sub-category, the applicable base amount is applied equally to all properties within the category or sub-category. After applying the Base Amount to a property, the remainder of ordinary rate applicable to that property is levied through the application of the relevant ad valorem rate (rate in the dollar) to the land value of that property.

A Base Amount is used to more equitably levy the total amount of rates across ratepayers where land values vary greatly within categories of ratepayers or there are disproportionate variations in valuations arising from a new valuation. Essentially the application of a Base Amount reduces the effect of land valuations on the rates payable.

Where a Base Amount is applied, it does not impact on the total overall rating income levied from that category or sub-category but merely results in a redistribution of the rates burden within that category or sub-category.

Section 536 of the Act stipulates the criteria that are relevant in determining the Base Amount. In determining the proportion of rating income to be levied through a Base Amount for the respective relevant categories and sub-categories, Council has had regard to the extent to which projected ad valorem rates on individual properties do not reflect the cost of providing necessary services and facilities and the degree of congruity and homogeneity between the values of properties that would be subject to the rate and their spread throughout the area. For the relevant categories and sub-categories, a rate that is wholly an ad valorem rate would result in an uneven distribution of the rate burden because a comparatively high proportion of assessments would bear a comparatively low share of the total rate burden.

Taking into account these factors, rates from the Residential and Business categories, and Rural Residential sub-category are levied on the basis of the highest proportion of the rating income (notional yield) allowed to be levied through a Base Amount, this being approximately 50%, applicable to the respective category or sub-category.

Ordinary Rates 2014/2015

For 2014/2015, Council will collect its rating revenue from determined categories and sub-categories thereof predominantly through an ad valorem rate in the dollar, with a minimum rate or base rate being applicable as shown in Table 1.

Table 1

Rate Category / Sub - Category	No. of Properties	Rateable Land Value	% Land Value	Notional Yield	% of Notional Yield	Ad valorem Rate in \$	Minimum Rate	Base Amount	Base Amount % of Yield
Residential	18,590	\$4,692,612,377	57%	\$18,769,562	65%	0.201903	-	\$500	49.52%
Residential-Rural Residential	4,287	\$2,290,718,000	28%	\$5,775,250	20%	0.126727	-	\$670	49.73%
Business Area 1	752	\$354,942,731	4%	\$1,434,583	5%	0.207138	-	\$930	48.75%
Business Area 2	329	\$162,104,401	2%	\$641,750	2%	0.207138	-	\$930	47.68%
Business Area Other	434	\$196,811,759	2%	\$811,292	3%	0.207138	-	\$930	49.75%
Farmland	622	\$525,474,700	6%	\$1,443,812	5%	0.274449	\$512	-	
Total	25,014	\$8,222,663,968	100%	\$28,876,249	100%				

Notes:

Variations will occur throughout the budget year between the estimated rate revenue indicated above and the actual income received. Reasons for variations between estimated income and actual income received include:

- Previously non-rateable properties becoming rateable during the year.
- Properties being withheld from rating, pending revised valuation particulars from the Valuer General's Office. This occurs when properties are subdivided and new valuation particulars are requested for the newly created lots. This usually results in an increase in the valuation base for the following year.
- Properties being rated for previous years upon receipt of new valuation particulars. There is a time delay associated with requesting new valuation particulars. This may result in some properties not being rated for a particular year until subsequent rating periods. This artificially inflates the rating revenue received for the year the rates are actually levied.
- Properties that are subdivided will have the new valuations used for rating from 1 July the following year from when the Plan was registered. This is also the case when part of a property is sold whereby the new valuations are to be used from 1 July the following year from when the sale took place.
- Any change in rating category is to take effect from the following quarter from when the application was received, should that application be successful.

Special Rates

In addition to the Ordinary Rates, the Act makes provision for a Special Rate. Special rates may be considered by Council if it wished to finance a project that will benefit either the whole of the City or part of the City. A project may be comprised of works, services, facilities or activities.

A special rate can be levied on any rateable land, which in the Council's opinion, benefits or will benefit from the project in question; or contributes to the need for the project; or has access to the project. Council may levy different special rates for various projects, or for similar projects in different parts of its area.

Council is not proposing any special rates for 2014/2015.

Annual Charges

In accordance with Section 501 of the Act, in addition to ordinary rates and special rates, Council may levy an annual charge for any of the following services:

- Waste management services
- Sewerage services;
- Water supply services
- Drainage services;
- Any services prescribed by the regulations.

Waste Management Services

Waste Management services for which an annual charge may be charged under Section 501 includes trade waste and commercial waste. Annual charges for Domestic Waste Management services are charged under Section 504 of the Act.

For 2014/2015, the Office of Environment and Heritage has increased the Section 88 Waste Levy from \$107.80 to \$120.69 per tonne, representing an increase of \$12.89 per tonne or 11.95%. This increase has been incorporated into the determination of various relevant Waste Management charges for 2014/2015.

Domestic Waste Management

Domestic Waste Management (DWM) Services generally means waste of a kind and quantity ordinarily generated on domestic premises and includes waste that may be recycled and garden organics.

In accordance with Section 504 of the Act, income obtained from charges for domestic waste management has been calculated so as to not exceed the reasonable cost to the council of providing the service. Council separately accounts for income raised through an annual charge for the provision of the DWM service and applies this revenue towards the cost of providing the service.

The DWM service for 2014/2015 includes the applicable bin service, the recycling bin service, the garden organics waste bin service and the kerbside collection service. Council is required to levy a DWM service availability charge on properties that do not utilise the service but are located within the service area, to reflect the cost of the availability of the service to those properties.

Table 2 illustrates the Waste Management charges for 2014/2015.

Table 2

Charge 2013/2014	Description	Charge 2014/2015	% Increase
DOMESTIC			
Without Garden Organics Service			
\$419.11	240 litre bin - Weekly	\$446.19	6.46%
\$265.11	140 litre bin - Weekly	\$282.24	6.46%
\$265.11	240 litre bin - Fortnightly	\$282.24	6.46%
\$186.15	140 litre bin – Fortnightly	\$198.18	6.46%
With Garden Organics Service			
\$464.11*	240 litre bin - Weekly	\$510.06	6.46%
\$310.11*	140 litre bin - Weekly	\$346.11	6.46%
\$121.14	Availability - Weekly	\$128.97	6.46%
\$60.57	Availability - Fortnightly	\$64.48	6.46%
\$70.31	240 litre additional garden organics bin	\$74.85	6.46%
\$70.31	240 litre additional recycling bin	\$74.85	6.46%
POA	Multiple waste collection service	POA	
BUSINESS			
\$578.40	240 litre bin - Weekly	\$615.77	6.46%
\$353.94	140 litre bin - Weekly	\$376.81	6.46%
\$70.31	240 litre additional garden organics bin	\$74.85	6.46%
\$70.31	240 litre additional recycling bin	\$74.85	6.46%
POA	Multiple waste collection service	POA	

* The Garden Organics Service full year component applicable to 2013/2014 was \$60.

Due to the service starting in September 2013, the full charge for 2013/2014 was a pro-rate amount of \$45.

Sewerage Service

Council provides reticulated sewerage services to the areas of:

- Bligh Park;
- Clarendon;
- McGraths Hill and Mulgrave Industrial Area;
- Pitt Town;
- South Windsor and South Windsor Industrial Area;
- Windsor;
- Windsor Downs; and
- Other minor extensions

Residential Sewerage Charge

Council levies an annual charge for sewerage services provided to residential premises, whether by way of mixed development, single dwelling, dual occupancy, strata or non-strata units/flats. The residential sewer rate is calculated on the basis that revenue raised is sufficient to fund the cost of providing the service, the ongoing sewerage network maintenance and renewal, and major capital works planned for future years.

Business Sewerage Charge

Businesses pay a sewerage charge rate based on usage. Five categories have been derived for volume discharges ranging from less than 1,000 litres per day (Category 1) to greater than 20,000 litres per day (Category 5).

Additionally, a Trade Waste Excess Volume Charge applies to the Category 5 discharges. Those businesses with volumes exceeding 20,000 litres per day (Category 5) will attract the excess volume charge for each kilolitre in excess of 20KL per day.

In addition to the excess volume charge, a trade waste mass loading charge may be levied, based on the strength of pollutants in the waste stream in Categories 2, 3, 4 and 5. The mass load will be calculated on the entire volume discharge, not just the excess, and charged according to pre-determined rates. Mass loading content may include Biochemical Oxygen Demand (BOD); Suspended Solids, Total Grease and Oil and other pollutant groups.

Volumes of waste generated consistently above the initial assessed categorisation will result in a review of the nominated category. An appeal mechanism will also enable the category to be reviewed when a property owner feels the assessed volume is too high.

Where industrial or commercial premises contain strata or non-strata units constructed under current planning laws these units are self-contained and considered separate entities; that is each unit contains its own amenities (toilets, showers, sink, canteen etc.). In these cases, a sewerage rate is calculated based on volume discharged to the sewerage system and applied to each unit.

Where industrial or commercial premises contain non-strata units constructed under older planning laws and may not be self-contained, that is where several units share amenities; these units can be aggregated to a single annual charge based on a combined volume discharge to the sewerage system.

Council levies an Unconnected Annual Charge (availability charge) on properties that do not utilise the sewerage service but are located within the service area, to reflect the cost of the availability of the service to those properties.

Table 3 shows the Sewerage charges for 2014/2015.

Table 3

Charge 2013/2014	Type of Service	Charge 2014/2015	% Increase
RESIDENTIAL			
\$584.25	Residential Connected	\$601.78	3%
\$389.09	Residential Unconnected	\$400.76	3%
BUSINESS			
\$680.09	Category 1 (<1,000 litres per day)	\$700.49	3%
\$3,409.97	Category 2 (1,001 to 5,000 litres per day)	\$3,512.27	3%
\$6,792.83	Category 3 (5,001 to 10,000 litres per day)	\$6,996.62	3%
\$13,544.20	Category 4 (10,001 to 20,000 litres per day)	\$13,950.53	3%
\$13,544.20 (plus volumetric)	Category 5 (>20,000 litres per day)*	\$13,950.53 (plus volumetric)	3%
\$392.06	Business - Unconnected	\$403.82	3%

** Plus Trade Waste Excess Volume Charge of \$2.51 per kilolitre for Category 5 properties.*

Sullage Service

Council provides a sullage pump-out service to properties that are not serviced by Sydney Water or the Windsor Sewer Scheme and do not have an on-site sewerage management facility. An annual charge is levied for the Sullage service.

In 2012/2013, Council introduced a differential pricing structure to encourage sewerage connection within the sewerage area. As the number of properties connected has now reached near capacity, there is no scope for continuing the differential pricing structure for 2014/2015.

Extra services and Emergency Services may be requested at any time during the financial year at an additional fee per service.

The sullage service charges are calculated on the basis that revenue raised is sufficient to fund the cost of providing the service and future rehabilitation works.

Table 4 shows the Sullage service charges for 2014/2015.

Table 4

Charge 2013/2014	Type of Service	Charge 2014/2015	% Increase
RESIDENTIAL			
\$1,534.79 *	Fortnightly Residential	\$1,626.57	5.98%
\$3,069.60 *	Weekly Residential	\$3,253.16	5.98%
\$123.49 *	Emergency Service	\$130.87	5.98%
\$98.34 *	Extra Service	\$104.22	5.98%
BUSINESS			
\$16.90 *	Commercial per 1000 litre (min volume 2500litre)	\$17.91	5.98%

** 2013/2014 Outside Sewerage Area Charge*

Pensioner Concessions

Concession on the rates and charges levied are available to eligible pensioners. Council has in excess of 3,100 eligible pensioners who receive concessions on their annual rates and charges. Different concessions are available for the varying charges.

Council offers a number of rating concessions to pensioners over and above the mandatory concessions. No State Government subsidy is received against these additional concessions.

In September 2007, the Federal Government amended the asset requirements for pensioner applications which have resulted in an increase in the number of pensioners eligible for a pensioner rebate which in turn has increased the cost in this area to Council.

Pensioner Rebates are only available to eligible pensioners from 1 July in the rating year in which they apply (or from the applicable quarter in the same year).

Ordinary Rates and Domestic Waste Management Service Charge

The Act provides for pension rebates of up to 50% of the aggregated ordinary rates and domestic waste management service charges, to a maximum of \$250.

Under the State's mandatory Pensioner Concession Scheme, the State Government reimburses Council 55% (up to \$137.50 per property) of the rates and charges written off under the provisions of the Act. Council funds the remaining 45% (up to \$112.50).

Sewerage Service Charge

A concession is available to eligible pensioners who are subject to the residential connected charge under the Windsor Sewerage Scheme. The mandatory concession in respect to Sewerage charges is \$87.50 of which the State Government provides a reimbursement to Council of 55% (\$48.13). This amount has remained unchanged since 1989. The total concession provided has traditionally been in excess of this, being based on 50% of the applicable charge. The additional concession amount is fully funded by Council.

Council funds the difference between the total concession and the mandatory concession less the reimbursement, which for 2014/2015 will be \$252.76 per property.

Sullage Service Charge

Council provides eligible pensioners receiving a sullage pump-out service with a pensioner concession additional to that received for rates and garbage. This subsidy is not available to pensioners who have non-eligible adult residents living at their property.

This rebate is fully funded by Council and is based on 50% of the applicable charge. The State Government provides no assistance towards pensioners on the sullage service.

Fees and Charges

Fee Pricing Policy

Council provides a wide range of services to the community and applies fees and charges accordingly. Each fee has been based on the pricing policy relevant and applicable to the fee and in line with competitive neutrality principles.

Code	Pricing Policy	Description
S	Statutory Fee	Price set to comply with statutory legislation
E	External Cost	Price determined by external parties
N	Nil Cost Recovery	No fee charged
P	Partial Cost Recovery	Price partially recovers costs
F	Full Cost Recovery	Price recovers costs attributable to good or service
R	Rate of Return	Price recovers all costs plus a set return
M	Market Rate	Price based on relevant market rate

Section 610E of the Local Government Act, 1993, allows Council to waive payment of, or reduce a fee in a particular case if it is satisfied that the case falls within a category of hardship or any other category that Council has determined it may consider waiving payment, or reducing a fee for this category. This does not apply to statutory, or otherwise regulated fees and charges.

Council has determined the following categories:

Category	Description
Hardship	Where there is evidence that the payment of the fee or charge will impose unreasonable financial hardship on the applicant given their particular circumstances
Charity	Where the applicant is a registered charity and the fee is for a service that will enable the provision of charitable services
Not For Profit	Where the applicant is an organisation that holds "not for profit" status and the fee is for a service that will enable the achievement of their objectives and betterment for the Hawkesbury community
Commercial	To attract functions or activities to the Hawkesbury Local Government Area, where there is a longer term benefit to the Hawkesbury community

The following principles will be considered when applying any reduction or waiver of a fee or charge:

- Compliance with statutory requirements
- Fairness and consistency
- Integrity
- Equity
- Transparency

The Council will directly, or through delegated authority, assess and make determinations on requests for reduction or waiver of fees in accordance with the above Categories.

Community Rooms – Deerubbin Centre

The community rooms in the Deerubbin Centre are available for hire or for free use. Hirers/Users are categorised as follows:

Group Category	Description of Group/Individual	Subject to Hire Fee?
A	Category A includes:	No
	<ol style="list-style-type: none"> 1. Local political party entities whose members are volunteers and which do not charge attendees any entry fee, and 2. Local Government Area (LGA) Community Groups. To be defined as an LGA or Local Community Group (for the purposes of Hawkesbury City Council's fees and charges), and therefore be eligible for free use of community rooms, <i>all of the following six criteria</i> must be met (supportive documentation may be required): <ol style="list-style-type: none"> a) An organised, volunteer, membership-based group whose objective is to support or engage in activities of public interest and; b) Operates on a non-profit basis and; c) Is located within the Hawkesbury Local Government Area (LGA) or can provide documented evidence that at least 50% of their membership base resides in the Hawkesbury LGA and; d) Provides community or cultural benefits to the residents of the Hawkesbury LGA and; e) Charges no entry fee when using the community room/s and; f) Charges no fees for services rendered when using the community room/s. <p>Notes:</p> <ul style="list-style-type: none"> • Goods, which are hand made by the local community group members, such as art, craft and design and their associated publications, may be sold when Local Community Groups use community room/s. • Not all non-profit organisations meet Category A criteria. • Category A excludes: consortiums or organised groups of businesses where the primary purpose of coming together is to promote goods and services and develop for-profit activities. 	
B	Category B includes	Yes
	<ol style="list-style-type: none"> 1. Non LGA community groups that are organised, volunteer and membership-based and operate on a non-profit basis. 2. Self-employed persons for the purpose of providing service to the community on a cost recovery basis only. 3. Non-profit organisations with reasonable means, for example lease of own facilities, or ownership of assets including money and property. 	
C	Category C includes	Yes
	<ol style="list-style-type: none"> 1. Commercial, for profit businesses. 2. Groups or organisations that distribute money that it makes to its members. 3. Consortiums or organised groups of businesses where the primary purpose of coming together is to promote goods and services and develop for-profit activities, for example: product launches and demonstrations; luncheons; tradeshows; swap meets. 	

Group Category	Description of Group/Individual	Subject to Hire Fee?
	4. Self-employed persons for the purpose of providing services to the public for personal profit.	
	5. State, Federal and Local Government (except Hawkesbury City Council) departments or agencies.	
	6. Non-Government Organisations operating under State, Federal and Local government auspices or funding arrangements.	
	7. Non-profit organisations with substantial means, for example ownership of assets or paid staff.	

Category A hirers have free use of the community rooms within the Deerubbin Centre. Category B and C hirers are subject to hire fees as outlined in the Fees and Charges.

Financial Assistance given by Council

Council may seek to advance its strategic and operational objectives by providing financial and other support to individuals, community groups and business entities. In line with Section 356 of the Act, Council may by way of resolution, contribute money or otherwise grant financial assistance.

To facilitate the provision of financial assistance to individuals, community groups and business entities, Council has adopted a Sponsorship Policy and established a Community Sponsorship Program. The Program provides for the following categories of financial assistance:

- a) **3 Year Event Sponsorship** – where community groups or business entities can apply for financial assistance to stage not-for-profit civic, community or cultural events which addresses a community need or objective identified in Council's adopted strategic and other plans;
- b) **Access to Community Facilities** – where members of the public or community groups can apply for financial assistance to meet a portion of the costs of hiring a Council or community facility to conduct social, recreational, cultural or other not-for-profit activities;
- c) **Program or Activity Seeding Grant** – where members of the public or community groups can apply for financial assistance to conduct community and cultural programs and activities; or to purchase community resources and complete minor capital works; or to undertake public education and awareness programs. To be eligible for funding under this category, the applicant's proposal must address a need or objective identified in Council's adopted strategic and other plans;
- d) **Minor Assistance** – where individuals and community groups can apply for a donation or financial assistance for requests which may fall outside the scope of activities identified above. These requests can involve donations which deliver an "individual gain" to a member of the public – as outlined in Section 356 of the Act – where the donation enables an individual or community group to compete in a civic, cultural, philanthropic, or sporting events or competitions in a representative capacity.
- e) **Accessibility Improvements** - where community agencies and business owners who operate retail or service outlets which are open to the public on a daily basis and have completed an access audit undertaken in conjunction with the Hawkesbury Access and Inclusion Advisory Committee. These requests are to fund specific accessibility improvements, which have been identified following the completion of an access audit. A maximum of \$3,000 provided on a 50:50 basis – where the applicant provides a co-contribution of the same value as the amount applied for. Applicants would be required to provide two quotes for the proposed accessibility improvements.
- f) Council may provide funding to enable not-for-profit community groups to apply for a refund of Development Application fees for renovations or additions to Council owned buildings or facilities.

In addition to these categories of financial assistance, Council also sponsors the Hawkesbury Sister Cities Program and will provide financial assistance of up to \$500 as a contribution to the cost of individual students participating in the Sister City Student Exchange Program. Council also contributes funding towards the staging of the Hawkesbury City Eisteddfod.

Council provides a range of in kind services through the provision of staff and the use free of charge of community rooms and other Council owned buildings.

Goods and Services Tax (GST)

Hawkesbury City Council has registered for GST. The ABN of Council is 54 659 038 834.

The Federal Treasury announced within the 2010/2011 Commonwealth Budget that the Treasurer's Division 81 Determination (which listed the Treasurers' determinations on GST exempt items) would be replaced with a new 'principles based regime' from 1 July 2011. Effective 1 July 2013, Local Governments are required to assessing all (new and existing) their taxes, fees and charges for their GST status.

For the 2014/2015 rates, fees and charges Council has undertaken this assessment in line with class rulings issued by the Australian Taxation Office.

Kerbing and Guttering Contributions by Adjoining Owners

The Act provides that recovery from the adjoining owner of a property may be made for up to 50% of the costs of the construction of kerbing and guttering. This applies for all future works, upon completion, with 50% of costs recovered for the adjoining front boundary and 25% of the costs recovered for the side boundary constructions on corner blocks.

Interest on Overdue Rates

In accordance with Section 566 of the Local Government Act 1993, the interest rate charged on overdue rates and charges for 2014/2015 by Council, is 8.5%, being the maximum permitted by the Minister for Local Government.

Interest on Overdue Sundry Debts

Sundry Debts greater than 180 days incur interest charges at the same rate which is applicable to overdue rates.

Legal Charges

Legal fees charged on applicable outstanding Rates and Charges are levied in accordance with the Schedule provided by NSW Courts.

Payment of Interest on Securities

Upon application, interest is paid on security deposits due for refund. Interest payable is calculated at the equivalent rate achieved on investments less the administration charge.

Review of Development Contribution Rates

Contribution rates in Council's Development Contributions Plan made under Section 94 of the *Environmental Planning and Assessment Act 1979*, and *Section 64 Contribution Plan – Stormwater Infrastructure for Pitt Town – Bona Vista and Fernadell Precincts* will be periodically reviewed with reference to the following indexes.

- Australian Bureau of Statistics Consumer Price Index (All Groups Index) for Sydney for all contributions excluding those related to the acquisition of land
- Australian Bureau of Statistics Consumer Price Index (All Groups Index) for Sydney for contributions related to the preparation and administration of the plan
- Land Value Index, as published by Council on its website, for contributions related to the acquisition of land. The land to be acquired by Council is shown in the above mentioned plans and the Base Land Value index for land is 100.

The actual or estimated costs of studies and other preparatory plans and investigations, proposed works and proposed land acquisitions can be found in the above mentioned plans.

The above mentioned plans, relevant Base Indexes, Current Indexes and contribution rates can be found on Council's website.

Proposed Borrowings

In accordance with Section 405(2) of Act and Clause 201 of the Local Government (General) Regulation 2005, Council is required to provide a statement of:

- The amounts of any proposed borrowings (other than internal borrowing);
- The sources from which they are proposed to be borrowed; and
- The means by which they are proposed to be secured.

In March 2013, Council entered into a Loan Agreement with the Commonwealth Bank in relation to a loan in the amount of \$5,260,000.

The loan is secured by Council's income in accordance with Clause 23 of the Local Government Financial Management Regulation 2005 which requires that *"the repayment of money borrowed by a council (whether by way of overdraft or otherwise), and the payment of any interest on that money, is a charge on the income of the Council"*.

The loan has been undertaken as part of Council's participation in the Local Infrastructure Renewal Scheme (LIRS) administered by the Office of Local Government. The LIRS provides for subsidised interest loans to be utilised for accelerated infrastructure works. The loan funds will be utilised to fund an accelerated timber bridge replacement program.

There are no additional borrowings proposed for 2014/2015, however Council may consider the opportunity to borrow funds where financially viable.



Fees and Charges

2014/2015 Fees and Charges

Table of Contents

Notes	22
Strategic Activities.....	23
Local Economic Development.....	23
Corporate Communications.....	23
Events.....	23
Advertising and Promotion	26
Community Services	26
Family Day Care (Peppercorn Services Inc)	26
Long Day Child Care (Various Community Organisations).....	26
Occasional Child Care (Peppercorn Services Inc)	26
Pre-School Services (Peppercorn Services Inc).....	26
Community Facility Hire	26
S377 Committees	27
Peppercorn Services Transport and Community Support Services Division	33
Home and Community Care.....	33
Environment and Regulatory Services	34
Caravan Parks, Camping Grounds and Manufactures Home Estates	34
Companion Animals.....	35
Health Services.....	38
Regulation and Enforcement.....	40
Sewerage Management Facilities	42
Waste Collection.....	43
Other	43
Development Services	44
Construction and Development.....	44
Subdivision and Civil Works.....	49
Additional Application Fees.....	51
Modification and Review of Development Consent	52
Certificates and Documents	54
Miscellaneous Fees	57
Strategic Planning Services	57
Additional Application Fees.....	57
Certificates and Documents.....	57
Miscellaneous Fees	58
Construction and Maintenance.....	58
Construction and Maintenance	58

Irrigation Licence Fee	60
Other Fees.....	60
Design and Mapping	61
Sales	61
Deposited Plans.....	62
Special Events	62
Road Naming - New Road	62
Parks and Recreation - Hawkesbury Sports Council	62
Player Fee	62
Ground and Facility Fees.....	62
Bensons Sports Fields	62
Owen Earle Oval.....	62
Canteen Hire Fees.....	62
Call Out Fees.....	62
Floodlighting/Electricity Charges	63
Keys	63
Security/Cleaning Bond/Administration Fee	63
Tennis and Netball Court Hire.....	63
School Hirers	63
Event Bin Hire.....	63
Commercial Organisations - Hire Fees	64
Parks and Recreation - McMahons Park.....	64
Player Fee	64
Ground and Facility Fees.....	64
Floodlighting/Electricity Charges	64
Keys	64
Call Outs.....	64
Security/Cleaning Bond	64
Casual School Hire	65
School Athletics Carnivals.....	65
Hawkesbury Outreach Community Services	65
Parks and Recreation - Hawkesbury Leisure Centres	65
Aquatics.....	65
Health and Fitness Membership	66
Indoor Stadium	67
Kidz Moves	68
Vacation Care.....	68
Parks And Recreation – Recreation	68
Park Bookings.....	68
Camping Fees - Upper Colo	70
Tree Preservation	70
Cemetery Fees	71

Miscellaneous	72
Richmond Pool	73
Tennis Court Hire.....	74
Bowen Mountain Park Hall.....	75
Waste Management - Sewer and Waste	75
Council Sewer Catchments Area Charges	75
S64 Pitt Town Development Area - Sewerage Infrastructure	76
S64 Pitt Town Development Area - Stormwater Infrastructure	77
Trade Waste Disposal In Council's Sewers.....	77
Sewerage	78
Sales	78
Waste Management Facility.....	78
Waste Management Sales.....	81
Non-Potable Water Sales	81
Corporate Services And Governance.....	81
General.....	81
Access To Information	81
Windsor Mall Fees	82
Footpath Usage	83
Printing and Signwriting Fees	84
Sale of Documents	84
Cultural Services - Gallery and Museum	85
Regional Gallery	85
Regional Gallery Room Hire	86
Regional Museum.....	87
Regional Museum Room Hire	88
Cultural Services - Library Services	89
Library Sales.....	89
Library Activities.....	89
Community Rooms Fees and Charges	91
Cultural Services - Visitor Information Centre.....	93
Merchandise Sales	93
Financial Services - Operations	94
Accounting Services	94
Rating Services.....	94
Information Services	95
Extraction and Collation of Information from Databases.....	95
Web Services - Related Organisations.....	95



Notes

Fees listed are inclusive of GST where applicable.

Conditions apply to 2013/2014 fees listed with an asterisk (*). Please refer to the 2013/2014 Operational Plan Part 1 for further details. This document is available on Council's website, www.hawkesbury.nsw.gov.au.

Index	Fee Description	Conditions	2013/2014 Fees	Pricing Policy	GST	2014/2015 Fees
STRATEGIC ACTIVITIES						
LOCAL ECONOMIC DEVELOPMENT						
SA.1	Professional and Administration Fees					
SA.1.1	Staff technical/professional project services-General Manager, Directors, Managers	Per hour or part thereof (min \$150.00)	\$125.00*	M	Y	\$150.00
SA.1.2	Staff technical/professional project services-General	Per hour or part thereof (min \$100.00)	\$95.00*	M	Y	\$100.00
SA.1.3	Staff technical/professional project services-Administrative/Clerical	Per hour or part thereof (min \$75.00)	\$65.00*	M	Y	\$75.00
SA.2	Sale of Merchandise		POA	P	Y	POA
SA.3	Signage Policy (Directional)					
SA.3.1	Signs - Adopt a sign		POA	P	Y	POA
SA.3.2	Signs - Commercial on Public Land	Per sign	\$1,100.00	F	Y	\$1,100.00
SA.4	Business Development Promotions and Projects (incl. Marketing, Communication, Skills Development and Training)		POA	M	Y	POA
SA.5	Tourism Promotion and Projects (incl. Marketing, Communication)		POA	M	Y	POA
SA.6	Conference Room Hire			M	Y	POA
CORPORATE COMMUNICATIONS						
EVENTS						
CC.1	Event Application Fees					
CC.1.1	Application Fee			N		Free
CC.1.2	Late Application Fee (2 months or less)			P	X	\$100.00
CC.2	Traffic and Transport Management for Events					
CC.2.1	Late Application Fee - Special Events - Traffic Management		\$115.00	P	X	\$115.00
CC.3	Non Exclusive use events					
CC.3.1	Administration/Booking Fee					
CC.3.2	Events in Parks	Included but not limited to the following activities: Weddings, Events, Parties, Large gatherings, Markets or Activities involving temporary structures				
CC.3.3	Small to Medium Events	Up to 200 people Excluding War Memorial Events	\$56.00	P	Y	\$58.00
CC.3.4	Large Events	Over 200 people		F	Y	\$100.00

Index	Fee Description	Conditions	2013/2014 Fees	Pricing Policy	GST	2014/2015 Fees
CC.3.5	Personal trainers/Boot camps	Per season Summer (September - March), Winter (April - August)	\$703.00*	F	Y	\$725.00
CC.3.6	Personal trainers/Boot camps/Other Commercial users	Casual hourly rate	\$21.00	F	Y	\$22.35
CC.3.7	Wedding at McQuade Park	Per hour (Maximum 2 hours), includes Booking Fee	\$104.00*	F	Y	\$110.00
CC.3.8	Refundable Bond					
CC.3.9	Sporting/Community event	Minimum Fee	\$200.00*	P	X	\$200.00
CC.3.10	Corporate/Business event	Minimum Fee	\$1,000.00*	P	X	\$1,000.00
CC.4	Exclusive use events	Exclusive use is where the activity/event takes over the whole or part of a park and restricts usage to that area				
CC.4.1	Administration/Booking Fee					
CC.4.2	Community organisation event (not for profit)	Where the event is no more than three consecutive days				
CC.4.3	Set up - Prior to Event	Per day	\$508.00	P	Y	\$300.00
CC.4.4	Event days	Per day	\$1,017.50	P	Y	\$800.00
CC.4.5	Removal/Clean up - Post Event	Per day	\$508.00	P	Y	\$300.00
CC.4.6	Corporate/Business organisation event	Where the event is no more than 3 consecutive days				
CC.4.7	Set up - Prior to Event	Per day	\$824.00	F	Y	\$500.00
CC.4.8	Event days	Per day	\$1,648.00	F	Y	\$1,000.00
CC.4.9	Removal/Clean up - Post Event	Per day	\$824.00	F	Y	\$500.00
CC.4.10	Community/Corporate/Business organisation event	Where the event is more than 3 consecutive days	\$1,035.00	F	Y	POA
	Exclusive use events For areas less than 1000m2 or less than 40% of the park, a reduced fee of 50% applies					
CC.4.11	Refundable Bond					
CC.4.12	Sporting/Community event	Minimum Fee	\$200.00*	P	X	\$200.00
CC.4.13	Corporate/business event	Minimum Fee	\$1,000.00*	P	X	\$1,000.00
CC.5	Events Services					
CC.5.1	Electricity					
CC.5.2	Corporate/business organisation	Per day	\$11.00	P	Y	\$88.00
CC.5.3	Garbage Service					
CC.5.4	Delivery and Pick-up of bins					
CC.5.5	1 to 10 bins		\$150.00	F	Y	\$155.00
CC.5.6	11 to 25 bins		\$300.00	F	Y	\$310.00
CC.5.7	Emptying Fee	Per bin	\$14.00	F	Y	\$14.50

Index	Fee Description	Conditions	2013/2014 Fees	Pricing Policy	GST	2014/2015 Fees
CC.5.8	Replacement bin due to vandalism or theft		\$95.00	F	Y	\$98.00
CC.5.9	Toilet cleaning	Prior to event	\$73.00	P	Y	\$75.00
CC.6	Casual Use of Parks and Reserves					
CC.6.1	Park Access					
CC.6.2	Establishment fee for use of parks as compounds by Contractors		\$240.00	F	X	\$250.00
CC.6.3	Rental per week for compound site	Per m ²	\$1.14	F	X	\$1.20
CC.6.4	Parks access administration fee		\$56.00	F	Y	\$58.00
CC.6.5	Use of Parks and Reserves by Hot Air Balloons					
CC.6.6	Annual administration booking fee		\$56.00	P	Y	\$56.00
CC.6.7	Fee per launch, landing or tether	For annual bookings	\$23.00	R	Y	\$23.00
CC.6.8	Casual hire fee	Per launch, landing or tether	\$107.00	R	Y	\$107.00
CC.6.9	Circuses/Fairs/Carnivals and other similar size events					
CC.6.10	Set up/Removal/Non-Show days	Per day	\$400.00	F	Y	\$400.00
CC.6.11	Show days		\$800.00	F	Y	\$800.00
CC.6.12	Markets and Fetes (Excluding Windsor Mall)	Rate per day				
CC.6.13	Application Fee - Community			F	Y	\$100.00
CC.6.14	Application Fee - Commercial			F	Y	\$500.00
CC.6.15	Markets	Per Stall, per day		F	Y	\$29.00
CC.6.16	Use of park to access private property for building/landscape works					
CC.6.17	Administration fee		\$50.91	P	X	\$58.00
CC.6.18	Inspection fee		\$109.91	F	X	\$113.00
CC.6.19	Refundable Bond	Minimum	\$2,000*	P	X	\$2,000.00
CC.7	Food Premises Registration and Inspection	Temporary and/or Mobile Food Vending Equipment				
CC.7.1	Temporary and/or mobile food vending equipment registration and inspection fee	Fee paid 30 days prior to event				
CC.7.2	Temporary Food Premises Category 1	Per annum (fee paid 30 days prior to event)	\$117.40*	P	X	\$122.00
CC.7.3	Temporary Food Premises Category 2	Per annum (fee paid 30 days prior to event)	\$88.00*	P	X	\$90.50
CC.7.4	Temporary Food Premises Category 3	Per annum (fee paid 30 days prior to event)	\$58.65*	P	X	\$60.50

Index	Fee Description	Conditions	2013/2014 Fees	Pricing Policy	GST	2014/2015 Fees
CC.7.5	Temporary and/or mobile food vending equipment registration and inspection fee					
CC.7.6	Temporary Food Premises Category 1	Per annum	\$152.65	P	X	\$158.00
CC.7.7	Temporary Food Premises Category 2	Per annum	\$114.40	P	X	\$118.00
CC.7.8	Temporary Food Premises Category 3	Per annum	\$76.30	P	X	\$79.00
ADVERTISING AND PROMOTION						
CC.8	Banner Pole Hire					
CC.8.1	Application Fee	Covers a period of 2 weeks	\$17.15	P	Y	\$18.00
CC.8.2	Removal of overdue banner		\$118.00	F	Y	\$122.00
CC.8.3	Refundable key bond		\$30.00	P	X	\$30.00
CC.8.4	Late return of key		\$10.91	P	X	\$12.00
CC.9	Banner Production	External Organisations				
CC.9.1	Supply of completed banner	Per linear metre	\$100.00	P	Y	\$103.00
CC.10	Professional and Administration Fees					
CC.10.1	Staff technical/professional project services-General Manager, Directors, Managers	Per hour or part thereof (Min \$150.00)	\$125.00*	M	Y	\$150.00
CC.10.2	Staff technical/professional project services-General	Per hour or part thereof (Min \$100.00)	\$95.00*	M	Y	\$100.00
CC.10.3	Staff technical/professional project services-Administrative/Clerical	Per hour or part thereof (Min \$75.00)	\$65.00*	M	Y	\$75.00
CC.11	Sale of Promotional Items		POA	P	Y	POA
COMMUNITY SERVICES						
FAMILY DAY CARE (PEPPERCORN SERVICES INC)						
CS.1	As determined by Peppercorn Services Inc.					
LONG DAY CHILD CARE (VARIOUS COMMUNITY ORGANISATIONS)						
CS.2	As determined by Child Care Service					
OCCASIONAL CHILD CARE (PEPPERCORN SERVICES INC)						
CS.3	As determined by Peppercorn Services Inc.					
PRE-SCHOOL SERVICES (PEPPERCORN SERVICES INC)						
CS.4	As determined by Peppercorn Services Inc.					
COMMUNITY FACILITY HIRE						
CS.5	Hall 3 Richmond Neighbourhood Centre (The Annex)	Per hour	\$11.00	P	Y	\$11.00
CS.6	McGraths Hill Community Centre	Per hour	\$11.00	P	Y	\$11.00
CS.7	Yarramundi Community Centre	Per hour	\$11.00	P	Y	\$11.00

Index	Fee Description	Conditions	2013/2014 Fees	Pricing Policy	GST	2014/2015 Fees
CS.8	Hire of hall for function		\$165.00	P	Y	\$165.00
CS.9	Function bond		\$220.00	P	X	\$220.00
CS.10	Key bond - Hire of hall		\$50.00	P	X	\$50.00
S377 COMMITTEES						
CS.11	Bilpin District Hall					
CS.11.1	Corporate hire of main hall for functions		\$120.00	E	Y	\$300.00
CS.11.2	Hire of main hall for functions	Per day	\$180.00	E	Y	\$250.00
CS.11.3	Hire of main hall for meetings	Per hour	\$15.00	E	Y	\$15.00
CS.11.4	Corporate hire of main hall for meetings		\$18.00	E	Y	\$18.00
CS.11.5	Hire of meeting room	Per hour (Local)	\$15.00	E	Y	\$15.00
CS.11.6	Hire of meeting room	Per hour (Non-local)	\$18.00	E	Y	\$18.00
CS.11.7	Hire of chairs	Per chair	\$1.00	E	Y	\$1.00
CS.11.8	Hire of kitchen appliances for function	Per appliance Per hour	\$15.00*	E	Y	\$15.00
CS.11.9	Use of heating	Per hour	\$10.00	E	Y	\$15.00
CS.11.10	Function Bond		\$500.00	E	X	\$500.00
CS.12	Blaxlands Ridge Community Centre					
CS.12.1	Hire of hall for functions	Per day	\$225.00	E	Y	\$250.00
CS.12.2	Hire of hall for meeting or child's party	Per hour (Minimum three hour booking)	\$15.00*	E	Y	\$20.00
CS.12.3	Hire of hall for community groups	Per person (Minimum \$10.00)	\$2.00*	E	Y	\$3.00
CS.12.4	Hire of tennis court (without lights)	Per hour	\$5.00	E	Y	\$6.00
CS.12.5	Hire of tennis court (with lights)	Per hour	\$6.00	E	Y	\$10.00
CS.12.6	Hire of Old School House to Comleroy-Kurrajong Historical Society	Per year	\$300.00	E	Y	\$320.00
CS.12.7	Hire of hall to HCOS for Preschool	Per day	\$50.00	E	Y	\$55.00
CS.12.8	Hire of hall to HCOS for Occasional Childcare	Per day	\$35.00	E	Y	\$40.00
CS.12.9	Hire of hall to HCOS - Additional hire	Per hour	\$10.00	E	Y	\$15.00
CS.12.10	Hire of hall to HCOS - Extra Storeroom	Per term	\$50.00	E	Y	\$55.00
CS.12.11	Hire of hall to HCOS - Floor levy	Per term	\$50.00	E	Y	\$50.00
CS.12.12	Equipment hire - Tables	Each	\$10.00	E	Y	\$10.00
CS.12.13	Equipment hire - Chairs	Each	\$0.50	E	Y	\$0.50
CS.12.14	Function Bond			E	X	\$200.00
CS.13	Bligh Park Community Centre					
CS.13.1	Tiningi Hall - Regular hire	Per hour	\$16.00	E	Y	\$16.00
CS.13.2	Tiningi Hall - Regular hire (concessional rate)	Per hour	\$10.50	E	Y	\$10.50

Index	Fee Description	Conditions	2013/2014 Fees	Pricing Policy	GST	2014/2015 Fees
CS.13.3	Tiningi Hall - Casual Hire (Saturday)		\$395.00	E	Y	\$395.00
CS.13.4	Tiningi Hall - Casual Hire (Sunday)		\$310.00	E	Y	\$310.00
CS.13.5	Tiningi Hall - Casual Hire - (other days)	Per hour (minimum 2 hour booking)	\$45.00*	E	Y	\$45.00
CS.13.6	Tiningi Hall - Key bond for casual hire (Saturday)		\$200.00	E	X	\$200.00
CS.13.7	Tiningi Hall - Key bond for casual hire (Sunday)		\$200.00	E	X	\$200.00
CS.13.8	Tiningi Hall - Key bond for casual hire (other days)		\$100.00	E	X	\$100.00
CS.13.9	Tiningi Meeting Room - Regular Hire	Per hour	\$12.00	E	Y	\$12.00
CS.13.10	Tiningi Meeting Room - Regular Hire (Concessional rate)	Per hour	\$9.00	E	Y	\$9.00
CS.13.11	Tiningi Meeting Room - Casual Hire (Saturday or Sunday)		\$126.00	E	Y	\$126.00
CS.13.12	Tiningi Meeting Room - Casual Hire (other days)	Per hour (minimum 2 hour booking)	\$21.00*	E	Y	\$21.00
CS.13.13	Tiningi Meeting Room - Key bond for casual hire (Saturday or Sunday)		\$100.00	E	X	\$100.00
CS.13.14	Tiningi Meeting Room - Key bond for casual hire (other days)		\$100.00	E	X	\$100.00
CS.13.15	Neighbourhood Centre Hall - Regular hire	Per hour	\$12.50	E	Y	\$12.50
CS.13.16	Neighbourhood Centre Hall - Regular hire (Concessional rate)	Per hour	\$9.50	E	Y	\$9.50
CS.13.17	Neighbourhood Centre Hall - Casual Hire (Saturday)		\$310.00	E	Y	\$310.00
CS.13.18	Neighbourhood Centre Hall - Casual Hire (Sunday)		\$225.00	E	Y	\$225.00
CS.13.19	Neighbourhood Centre Hall - Casual Hire (other days)	Per hour (minimum 2 hour booking)	\$32.00*	E	Y	\$32.00
CS.13.20	Neighbourhood Centre Hall - Key bond for casual hire (Saturday)		\$200.00	E	X	\$200.00
CS.13.21	Neighbourhood Centre Hall - Key bond for casual hire (Sunday)		\$200.00	E	X	\$200.00
CS.13.22	Neighbourhood Centre Hall - Key bond for casual hire (other days)		\$100.00	E	X	\$100.00
CS.13.23	Neighbourhood Centre Meeting Lounge - Regular Hire	Per hour	\$6.50	E	Y	\$6.50
CS.13.24	Neighbourhood Centre Meeting Lounge - Regular hire (Concessional rate)	Per hour	\$5.50	E	Y	\$5.50
CS.13.25	Youth Hall - Regular hire	Per hour	\$10.50	E	Y	\$10.50

Index	Fee Description	Conditions	2013/2014 Fees	Pricing Policy	GST	2014/2015 Fees
CS.13.26	Youth Hall - Regular hire (Concessional rate)	Per hour	\$9.50	E	Y	\$9.50
CS.13.27	Youth Hall - Casual Hire (Saturday or Sunday)		\$131.00	E	Y	\$131.00
CS.13.28	Youth Hall - Casual Hire (other days)	Per hour (minimum 2 hour booking)	\$26.00*	E	Y	\$26.00
CS.13.29	Youth Hall - Key bond for casual hire (Saturday or Sunday)		\$100.00	E	X	\$100.00
CS.13.30	Youth Hall - Key bond for casual hire (other days)		\$100.00	E	X	\$100.00
CS.13.31	Polishing fee for all dance groups	Per month	\$6.50	E	Y	\$6.50
CS.13.32	Hire of large cupboards	Per month	\$13.50	E	Y	\$13.50
CS.13.33	Hire of large cupboards (concessional rate)	Per month	\$6.00	E	Y	\$6.00
CS.13.34	Hire of small cupboards	Per month	\$4.50	E	Y	\$4.50
CS.13.35	Hire of crockery and cutlery (0 - 50 people)		\$50.00	E	Y	\$50.00
CS.13.36	Hire of crockery and cutlery (51 - 80 people)		\$60.00	E	Y	\$60.00
CS.13.37	Hire of crockery and cutlery (81 - 100 people)		\$90.00	E	Y	\$90.00
CS.13.38	Hire of crockery and cutlery (100 - 120 people)		\$100.00	E	Y	\$100.00
CS.13.39	Hire of crockery and cutlery (120+ people)		\$120.00	E	Y	\$120.00
CS.13.40	Hire of tables (6 adults)	Each	\$15.00	E	Y	\$15.00
CS.13.41	Hire of tables (child)	Each	\$2.00	E	Y	\$2.00
CS.13.42	Hire of chair (adult)	Each	\$3.00	E	Y	\$3.00
CS.13.43	Hire of chair (child)	Each	\$2.00	E	Y	\$2.00
CS.13.44	Hire of tables and chairs - Deposit		\$100.00	E	X	\$100.00
CS.13.45	Non-refundable booking fee	All halls for all casual hire	\$55.00	E	Y	\$55.00
CS.13.46	Key bond	All regular hirers	\$100.00	E	X	\$100.00
CS.13.47	Booking fee	All Halls for all casual hires	\$55.00	E	Y	\$55.00
CS.14	Glossodia Community Centre					
CS.14.1	F4.1 Hall Hire for a function		\$275.00	E	Y	\$275.00
CS.14.2	F4.2 Hall Hire - For-profit groups - Per hour	Per hour	\$11.00	E	Y	\$11.00
CS.14.3	F4.3 Function bond		\$200.00	E	X	\$200.00
CS.15	Maraylya Hall					
CS.15.1	F5.1 Hall Hire for a function		\$220.00	E	Y	\$220.00
CS.15.2	F5.2 Hall Hire Deposit		\$200.00	E	X	\$200.00
CS.15.3	F5.3 Hire of cutlery and crockery		\$33.00	E	Y	\$33.00

Index	Fee Description	Conditions	2013/2014 Fees	Pricing Policy	GST	2014/2015 Fees
CS.16	North Richmond Community Centre					
CS.16.1	Party Hire of entire centre including Youth hall (Saturday only)		\$600.00	E	Y	\$600.00
CS.16.2	Party Hire of community centre Hall 1 and Hall 2 (Saturday)		\$500.00	E	Y	\$500.00
CS.16.3	Party Hire of community centre Hall 1 and Hall 2 (Friday)		\$450.00	E	Y	\$450.00
CS.16.4	Party Hire of community centre Hall 1 and Hall 2 (Sunday)		\$400.00	E	Y	\$400.00
CS.16.5	Party Hire of Hall 1 only (Saturday)		\$400.00	E	Y	\$400.00
CS.16.6	Party Hire of Hall 1 (Friday)		\$350.00	E	Y	\$350.00
CS.16.7	Party Hire of Hall 1 (Sunday)		\$300.00	E	Y	\$300.00
CS.16.8	Party Hire of Hall 2 only (Saturday)		\$350.00	E	Y	\$350.00
CS.16.9	Party Hire of Hall 2 (Friday)		\$300.00	E	Y	\$300.00
CS.16.10	Party Hire of Hall 2 (Sunday)		\$250.00	E	Y	\$250.00
CS.16.11	Party Hire of Youth Hall only (Saturday)		\$250.00	E	Y	\$250.00
CS.16.12	Party Hire of Youth Hall (Friday)		\$250.00	E	Y	\$250.00
CS.16.13	Party Hire of Youth Hall (Sunday)		\$250.00	E	Y	\$250.00
CS.16.14	Permanent Hire of hall - 'for profit' groups rate	Per hour	\$21.00	E	Y	\$21.00
CS.16.15	Permanent Hire of hall (for groups) - concessional rate	Per hour	\$15.00	E	Y	\$15.00
CS.16.16	Hire of hall (for groups) - casual	Per hour (during the week)	\$30.00	E	Y	\$30.00
CS.16.17	Hire of hall (for groups) (Weekends)	Per hour - casual rate	\$35.00	E	Y	\$35.00
CS.16.18	Hire of Meeting Room or Foyer	Per hour - for profit group rate	\$14.00	E	Y	\$14.00
CS.16.19	Hire of Meeting Room or Foyer	Per hour - concessional rate	\$9.00	E	Y	\$9.00
CS.16.20	Hire of Meeting Room or Foyer	Per hour - casual rate	\$18.00	E	Y	\$18.00
CS.16.21	Hire of large storage cupboard	Per month	\$6.00	E	Y	\$6.00
CS.16.22	Hire of kitchen cupboard	Per month	\$3.00	E	Y	\$3.00
CS.16.23	Refundable deposit for party hire	Other than 16th, 18th and 21st Birthdays	\$250.00*	E	X	\$250.00
CS.16.24	Refundable deposit for party hire	16th, 18th and 21st Birthdays	\$500.00*	E	X	\$500.00
CS.16.25	Hall hire - Not for Profit Organisations (Weekdays)	Per hour - casual rate	\$21.00	E	Y	\$21.00
CS.16.26	Hall hire - Not for Profit Organisations (Weekends)	Per hour - casual rate	\$30.00	E	Y	\$30.00

Index	Fee Description	Conditions	2013/2014 Fees	Pricing Policy	GST	2014/2015 Fees
CS.16.27	Meeting Room hire - Not for Profit Organisations (Weekdays)	Per hour - casual rate	\$15.00	E	Y	\$15.00
CS.16.28	Meeting Room hire - Not for Profit Organisations (Weekends)	Per hour - casual rate	\$18.00	E	Y	\$18.00
CS.16.29	Key deposit		\$20.00	E	X	\$20.00
CS.16.30	Additional hall hire fee to allow finish at 1am		\$40.00	E	Y	\$40.00
CS.16.31	Additional fee for Friday night set up (If available)		\$60.00	E	Y	\$60.00
CS.17	Richmond Community Centre					
CS.17.1	Hire of hall - Function hire		\$18.00	E	Y	\$200.00
CS.17.2	Hire of hall - Casual users	Per hour - for profit group rate	\$18.00	E	Y	\$18.00
CS.17.3	Hire of hall - Casual users	Per hour - concessional rate	\$15.00	E	Y	\$15.00
CS.17.4	Hire crockery and glass		\$50.00	E	Y	\$50.00
CS.17.5	Refundable deposit (party hire)		\$200.00	E	X	\$200.00
CS.17.6	Refundable key deposit		\$35.00	E	X	\$35.00
CS.18	St Albans School of Arts					
CS.18.1	Hire of hall - with PA	Up to 4 hours (Day only)	\$85.00*	E	Y	\$85.00
CS.18.2	Hire of hall - without PA	Up to 4 hours (Day only)	\$45.00*	E	Y	\$45.00
CS.18.3	Hire of hall - Charity/ Community/ Volunteer/ Residents / Ex-Residents	Up to 8 hours (Day only) - including set up/clean up				
CS.18.4	Whole Kitchen/Hall Facilities with PA		\$140.00	E	Y	\$140.00
CS.18.5	Hall Facilities with PA (without kitchen)		\$115.00	E	Y	\$115.00
CS.18.6	Whole Kitchen/Hall Facilities without PA		\$90.00	E	Y	\$90.00
CS.18.7	Hall only (including Tea/Coffee/Urn facilities)		\$65.00	E	Y	\$65.00
CS.18.8	Hire of hall - Non-residents/Enterprise	Up to 8 hours (Day only) - including set up/clean up				
CS.18.9	Whole Kitchen/Hall Facilities with PA		\$170.00	E	Y	\$170.00
CS.18.10	Hall Facilities with PA (without kitchen)		\$145.00	E	Y	\$145.00
CS.18.11	Whole Kitchen/Hall Facilities without PA		\$120.00	E	Y	\$120.00
CS.18.12	Hall only (including Tea/Coffee/Urn facilities)		\$95.00	E	Y	\$95.00
CS.18.13	Day/Night hire - Charity/ Community/ Volunteer/ Residents/ Ex-Residents	Up to 24 hours - including set up/clean up				
CS.18.14	Whole Kitchen/Hall Facilities with PA		\$165.00	E	Y	\$165.00
CS.18.15	Hall Facilities with PA (without kitchen)		\$140.00	E	Y	\$140.00

Index	Fee Description	Conditions	2013/2014 Fees	Pricing Policy	GST	2014/2015 Fees
CS.18.16	Whole Kitchen/Hall Facilities without PA		\$115.00	E	Y	\$115.00
CS.18.17	Hall only (including Tea/Coffee/Urn facilities)		\$90.00	E	Y	\$90.00
CS.18.18	Day/Night hire - Non-residents/Enterprise	Up to 24 hours - including set up/clean up				
CS.18.19	Whole Kitchen/Hall Facilities with PA		\$220.00	E	Y	\$220.00
CS.18.20	Hall Facilities with PA (without kitchen)		\$195.00	E	Y	\$195.00
CS.18.21	Whole Kitchen/Hall Facilities without PA		\$175.00	E	Y	\$175.00
CS.18.22	Hall only (including Tea/Coffee/Urn facilities)		\$145.00	E	Y	\$145.00
CS.19	Bond/Key Deposit	For all categories	\$500.00	E	X	\$500.00
CS.20	Wilberforce School of Arts					
CS.20.1	Hire of hall (for function)		\$220.00	E	Y	\$220.00
CS.20.2	Hire of hall - For groups	Per hour (min \$55.00)	\$12.00	E	Y	\$12.00
CS.20.3	Refundable key deposit		\$50.00	E	X	\$50.00
CS.21	Kurrajong Community Centre	Includes use of kitchen				
CS.21.1	Permanent hall bookings					
CS.21.2	Small part of hall	Per hour (minimum 2 hour booking)	\$10.00*	E	Y	\$10.00
CS.21.3	Large part of hall	Per hour (minimum 2 hour booking)	\$14.00*	E	Y	\$14.00
CS.21.4	Whole hall	Per hour (minimum 2 hour booking)	\$20.00*	E	Y	\$20.00
CS.21.5	Casual hall bookings					
CS.21.6	Small part of hall	Half day (4 hours)	\$50.00	E	Y	\$50.00
CS.21.7	Large part of hall	Half day (4 hours)	\$100.00	E	Y	\$100.00
CS.21.8	Entire hall	Half day (4 hours)	\$135.00	E	Y	\$135.00
CS.21.9	Entire hall	Full day	\$200.00	E	Y	\$200.00
CS.21.10	Casual Canteen hire	Per day	\$138.00	E	Y	\$138.00
CS.21.11	Storage rate	Per m2	\$150.00	E	Y	\$150.00
CS.22	Colo Heights Hall					
CS.22.1	Hire of hall (Playgroup)	Per session	\$5.00	E	Y	\$5.00
CS.22.2	Casual hire	Per hour	\$10.00	E	Y	\$10.00
CS.22.3	Function (Weeknights)	Per night (Weeknights)	\$50.00	E	Y	\$50.00
CS.22.4	Function hire (Weekends)	Per day (weekends)	\$100.00	E	Y	\$100.00
CS.22.5	Tennis court hire	Per hour	\$5.00	E	Y	\$5.00
CS.22.6	Refundable deposit for party hire		\$200.00	E	X	\$300.00

Index	Fee Description	Conditions	2013/2014 Fees	Pricing Policy	GST	2014/2015 Fees
PEPPERCORN SERVICES TRANSPORT AND COMMUNITY SUPPORT SERVICES DIVISION						
HOME AND COMMUNITY CARE						
	Note - Fees and charges for eligible Home and Community Care customers are a recommended fee only. In accordance with HACC funding guidelines - HACC customers cannot be refused a service because of inability to pay the full recommended fee					
PS.1	Eligible HACC funded Groups					
PS.1.1	Seniors to local access and shopping	\$5.00 to \$10.00	POA*	E	F	POA
PS.2	Day Care and Outings					
PS.2.1	Charge per km - first 100 km	Per km for first 100 kms, Plus Fee PS.2.2	\$0.55*	E	F	\$0.60
PS.2.2	Charge per km	After the first 100 km, thereafter	\$0.30*	E	F	\$0.35
PS.3	Senior Friendship Groups - Not for Profit Groups					
PS.3.1	Bus Hire for Outings					
PS.3.2	Charge per km - First 100 km	Per km for first 100 kms, Plus Fee PS.3.3 Plus Fee PS.3.4	\$0.80*	E	Y	\$0.85
PS.3.3	Charge per km	After the first 100 km, thereafter	\$0.55*	E	Y	\$0.60
PS.3.4	Drivers wages		POA*	E		POA
PS.4	Individual HACC Medical Related Transport Services (Indicative Fees, subject to negotiation)					
PS.4.1	0 to 15 kms	Flat charge	\$8.00	E	F	\$10.00
PS.4.2	16 to 25 kms	Flat charge	\$16.00	E	F	\$16.00
PS.4.3	26 to 45 kms	Flat charge	\$30.00	E	F	\$20.00
PS.4.4	46 to 70 kms	Flat charge	\$35.00	E	F	\$30.00
PS.4.5	71 to 120 kms	Flat charge	\$40.00	E	F	\$40.00
PS.4.6	121 to 200 kms	Flat charge	\$45.00	E	F	\$50.00
PS.4.7	Over 200 kms	Flat charge	\$50.00	E	F	POA
PS.5	Youth Groups Bus Hire	Plus Petrol and Tolls	\$55.00*	E	Y	\$65.00
PS.6.1	Commercial Bus Hire					
PS.6.2	Charge per km - First 100 km	Per km for first 100 kms, Plus Fee PS.6.3 Plus Fee PS.6.4	\$1.48*	E	Y	\$1.77
PS.6.3	Charge per km	After the first 100 km, thereafter	\$0.60*	E	Y	\$0.66
PS.6.4	Drivers wages, petrol and road tolls		POA*	E	Y	POA
PS.7	Subsidised Community Bus Hire	Not for profit groups not in receipt of government funding				
PS.7.1	Depending upon vehicle size. Rates includes drivers wages, petrol and tolls	\$10.00 per seat From \$90.00 to \$210.00, according to size of vehicle	POA*	E	Y	POA

Index	Fee Description	Conditions	2013/2014 Fees	Pricing Policy	GST	2014/2015 Fees
PS.8	Donations for Shopping outings					
PS.8.1	Windsor to Windsor shops		\$4.00	E	X	\$5.00
PS.8.2	Richmond to Richmond shops		\$4.00	E	X	\$5.00
PS.8.3	Nth Richmond to Nth Richmond shops		\$4.00	E	X	\$5.00
PS.8.4	Windsor to Richmond shops		\$8.00	E	X	\$5.00
PS.8.5	Kurrajong and Bilpin to Richmond shops		\$10.00	E	X	\$10.00
PS.8.6	Sackville to Windsor and Richmond shops		\$10.00	E	X	\$10.00
PS.8.7	Wisemans Ferry to Windsor and Richmond shops		\$10.00	E	X	\$10.00
PS.9	Centre Based Meals Program					
PS.9.1	Subsidised meal program	\$6.00 to \$8.50 depending on category	POA*	E	F	POA
PS.9.2	Centre-based Meals Program - Transport	\$1.00 to \$6.00 depending on category	POA*	E	F	POA
ENVIRONMENT AND REGULATORY SERVICES						
CARAVAN PARKS, CAMPING GROUNDS and MANUFACTURES HOME ESTATES						
RS.1	Application for approval to operate	Per site (minimum \$100.00)	\$18.10*	P	X	\$18.64
RS.2	Reinspection of application for approval to operate	Per site (minimum \$100.00)	\$18.10*	P	X	\$18.64
RS.3	Periodic inspection	Per site (minimum \$100.00)	\$18.10*	P	X	\$18.64
RS.4	Reinspection required due to non-compliance in periodic inspection	Per site (minimum \$80.00)	\$14.70*	P	Y	\$16.65
RS.5	Issue replacement approval to new proprietor		\$67.15	P	X	\$69.50
RS.6	Application and Inspection of Installations on Caravan Parks		\$123.30	P	X	\$127.00
RS.7	Reinspection required for Installations on Caravan Parks		\$79.75	P	X	\$82.50
RS.8	Application and Inspection of structure associated with manufactured home and completion certificate		\$123.30	P	X	\$127.00
RS.9	Reinspection of structure associated with manufactured home and completion certificate		\$79.75	P	X	\$82.50

Index	Fee Description	Conditions	2013/2014 Fees	Pricing Policy	GST	2014/2015 Fees
COMPANION ANIMALS						
	Charges for the following animals: 1) Hawkesbury City Council Dogs 2) Hawkesbury City Council Cats 3) Penrith City Council Dogs 4) Penrith City Council Cats 5) The Hills Shire Council Dogs 6) The Hills Shire Council Cats 7) Other Councils (Dogs and Cats)					
RS.10	Companion Animals Registration Fees	Companion Animals Amendment Bill 2013 (NSW) Schedule 2 Amendment of Companion Animals Regulation 2008				
RS.10.1	Desexed Animal (Cats and Dogs)	or as determined by Legislation	\$40.00	S	X	\$49.00
RS.10.2	Animal not desexed (Cats and Dogs)	or as determined by Legislation	\$150.00	S	X	\$182.00
RS.10.3	Pensioner (desexed animal) (Cats and Dogs)	or as determined by Legislation	\$15.00	S	X	\$19.00
RS.10.4	Breeder (Cats and Dogs)	Per animal, or as determined by Legislation	\$40.00	S	X	\$49.00
	A recognised Breeder means a person who is a prefix endorsed member of the following: - Royal NSW Canine Council Ltd - NSW Cat Fanciers Assoc Inc - Waratah State Cat Alliance Inc					
RS.11	Micro-chipping (Cats and Dogs)	Per animal	\$45.75	P	Y	\$47.50
RS.12	Micro-chipping Cat/Dog for Animal Welfare Groups that have Section 16D exemption under the NSW Companion Animals Act 1998	Per animal	\$7.00	P	Y	\$7.20
RS.13	Vaccinating Cat/Dog for Animal Welfare Groups that have Section 16D exemption under the NSW Companion Animals Act 1998	Per animal	\$10.00	P	Y	\$10.30
	Note: A dog formerly registered with the Greyhound Racing Act (1985), will have the applicable registration fee reduced by \$15.00					
RS.13	Compliance Certificates					
RS.13.1	Certificate of compliance with enclosure requirements for dangerous, menacing or restricted dog, including inspection		\$100.00	S	X	\$150.00

Index	Fee Description	Conditions	2013/2014 Fees	Pricing Policy	GST	2014/2015 Fees
RS.14	Hire of Animal Control Goods					
RS.14.1	Traps					
RS.14.2	Cats - Hire of Traps	Per fortnight Plus Fee RS.14.3	\$29.20*	P	Y	\$30.00
RS.14.3	Cats - Deposit on Trap Hire	Refundable on return of trap	\$140.00	P	X	\$145.00
RS.14.4	Dogs - Hire of Traps	Per fortnight Plus Fee RS.14.5	\$35.10*	P	Y	\$36.20
RS.14.5	Dogs - Deposit on Trap Hire	Refundable on return of trap	\$267.30	P	X	\$275.30
RS.15	Impounding					
RS.15.1	Cats Impounding					
RS.15.2	Release fee		\$23.15	P	X	\$23.90
RS.15.3	Maintenance	Per day	\$35.10	P	X	\$36.20
RS.15.4	Subsequent releases - same owner/same cat within 12 months period		\$99.50	R	X	\$102.50
RS.15.5	Dogs Impounding					
RS.15.6	Release fee		\$38.00	P	X	\$39.20
RS.15.7	Maintenance	Per day	\$38.00	P	X	\$39.20
RS.15.8	Subsequent releases - same owner/same dog within 12 months period		\$106.35	R	X	\$109.60
RS.16.9	Stock Impounding					
	Driving Fees - under clause 2(4) of the Impounding Act 1993					
RS.16.10	Every horse, ass, mule, cow					
RS.16.11	1st animal	Per km	\$8.20	F	X	\$8.50
RS.16.12	2nd and subsequent animals owned by same person and impounded at the same time.	Per km	\$5.90	F	X	\$6.10
RS.16.13	Sheep					
RS.16.16	1st 100 or number less than 100	Per km	\$8.20	F	X	\$8.50
RS.16.16	2nd 100 and subsequent 100	Per km	\$5.90	F	X	\$6.10
RS.16.16	Goat or Pig	Per animal Per km	\$5.90*	F	X	\$6.10
RS.16.17	Birds and Fowl Impounding					
RS.16.18	Bird and Fowl - every bird or fowl	Per km	\$5.90	F	X	\$6.10
RS.17	Advertisements					
RS.17.1	Fee	Plus Fee RS.17.2	\$99.50*	F	X	\$102.50
RS.17.2	Advertisement Costs	Plus Fee RS.17.1	POA*	F	Y	POA
RS.17.3	Each notice by post		\$41.85	F	X	\$43.10

Index	Fee Description	Conditions	2013/2014 Fees	Pricing Policy	GST	2014/2015 Fees
RS.18	Sales of animals					
RS.18.1	Sale of Cats					
RS.18.2	Sale of Cats	Per animal Includes registration, micro-chipping and desexing	\$230.00	P	Y	\$240.00
RS.18.3	Sale of Cats Pensioner Concession Sale Fee	Per animal Includes registration, micro-chipping and desexing	\$205.00	P	Y	\$210.00
RS.18.4	Sale of dogs					
RS.18.5	Sale of dogs	Per animal Includes registration, micro-chipping and desexing	\$325.00	P	Y	\$340.00
RS.18.6	Sale of dogs Pensioner Concession Sale Fee	Per animal Includes registration, micro-chipping and desexing	\$300.00	P	Y	\$310.00
RS.19	Surrender and Collection of Animals					
RS.19.1	Surrender of cats to pound - Hawkesbury residents ONLY	Per animal	\$17.50	P	X	\$18.00
RS.19.2	Surrender of cats to pound - Non-Hawkesbury residents	Per animal	\$77.50	R	X	\$80.00
RS.19.3	Surrender of dogs to pound - Hawkesbury residents ONLY	Per animal	\$35.00	P	X	\$36.00
RS.19.4	Surrender of dogs to pound - Non-Hawkesbury residents	Per animal	\$98.50	R	X	\$102.00
RS.20	Collection of surrendered cat or dog from private premises					
RS.20.1	Within 30 km of the animal shelter	Per animal Plus Fees RS.19.1 to RS.19.4	\$76.30	F	X	\$80.00
RS.20.2	Between 30 km and 60 km of the animal shelter	Per animal Plus Fees RS.19.1 to RS.19.4	\$99.50	F	X	\$105.00
RS.20.3	Greater than 60 km of the animal shelter	Per animal Plus Fees RS.19.1 to RS.19.4	\$123.30	F	X	\$130.00
RS.21	Pound Keepers Fees for Sustenance					
RS.21.1	Horses	Per head, per day	\$23.00*	F	X	\$24.00
RS.21.2	Cattle	Per head, per day	\$26.00*	F	X	\$27.00
RS.21.3	Sheep	Per head, per day	\$10.50*	F	X	\$11.00
RS.21.4	Pigs	Per head, per day	\$10.50*	F	X	\$11.00
RS.21.5	Goats	Per head, per day	\$10.50*	F	X	\$11.00
RS.21.6	Birds and Fowl	Per head, per day	\$3.15*	F	X	\$3.25

Index	Fee Description	Conditions	2013/2014 Fees	Pricing Policy	GST	2014/2015 Fees
HEALTH SERVICES						
RS.22	Food Premises Annual Administration Charge	Food Regulation 2004, Part 10 Clause 183				
	This administration fee does not apply to School Canteens and Not for Profit Organisations					
RS.22.1	5 or less FTE Food Handlers at premises		\$137.80	P	X	\$142.00
RS.22.2	6-50 FTE Food Handlers at premises		\$275.55	P	X	\$285.00
RS.22.3	51+ FTE Food Handlers at premises		\$1,102.30	P	X	\$1,135.00
RS.23	Food Premises Inspection Fees					
RS.23.1	Category 1 (Food Authority P3)	Per annum for each inspection	\$117.60*	P	X	\$122.00
RS.23.2	Category 2 (Food Authority P1 or P2)	Per annum for each inspection	\$152.70*	P	X	\$158.00
RS.23.3	Category 3 (Food Authority P1 or P2)	Per annum for each inspection	\$199.65*	P	X	\$206.00
RS.23.4	Reinspection after non-compliance		\$105.85	P	X	\$110.00
RS.24	Temporary and/or mobile food vending equipment registration and inspection fee - Fee paid 30 days prior to event					
RS.24.1	Temporary Food Premises Category 1	Per annum (fee paid 30 days prior to event)	\$117.40*	P	X	\$122.00
RS.24.2	Temporary Food Premises Category 2	Per annum (fee paid 30 days prior to event)	\$88.00*	P	X	\$90.50
RS.24.3	Temporary Food Premises Category 3	Per annum (fee paid 30 days prior to event)	\$58.65*	P	X	\$60.50
RS.25	Temporary and/or mobile food vending equipment registration and inspection fee					
RS.25.1	Temporary Food Premises Category 1	Per annum	\$152.65	P	X	\$158.00
RS.25.2	Temporary Food Premises Category 2	Per annum	\$114.40	P	X	\$118.00
RS.25.3	Temporary Food Premises Category 3	Per annum	\$76.30	P	X	\$79.00
RS.26	Reinspection after non-compliance for temporary and/or mobile food vending equipment		\$95.00	P	X	\$98.00
RS.27	Code for the construction of food premises	Per booklet	\$13.55	R	X	\$14.00
RS.28	Waste Water warning signs	Per sign	\$18.70	F	Y	\$19.30
RS.29	Issuing of notices under the Food Act		\$330.00	S	X	\$330.00
RS.30	Pre-purchase inspection of food premises and written report		\$229.00	R	X	\$236.00

Index	Fee Description	Conditions	2013/2014 Fees	Pricing Policy	GST	2014/2015 Fees
RS.31	Inspection/Reinspections of low risk food business (Food Authority P4)		\$35.10	P	X	\$36.20
RS.32	Voluntary food safety audit		\$97.68	P	Y	\$110.65
RS.33	Inspection of Other Premises					
RS.33.1	Brothels		\$107.45	P	X	\$110.60
RS.33.2	Legionella Control		\$107.45	P	X	\$110.60
RS.33.3	Hairdressing		\$107.45	P	X	\$110.60
RS.33.4	Skin penetration		\$107.45	P	X	\$110.60
RS.33.5	Public and Semi Public Swimming Pools		\$107.45	P	X	\$110.60
RS.34	Annual Registration of Premises					
RS.34.1	Brothels		\$32.10	P	X	\$33.10
RS.34.2	Legionella Control		\$32.10	P	X	\$33.10
RS.34.3	Hairdressing		\$32.10	P	X	\$33.10
RS.34.4	Skin penetration		\$32.10	P	X	\$33.10
RS.34.5	Public and Semi Public Swimming Pools		\$32.10	P	X	\$33.10
RS.35	Water carting		\$32.10	P	X	\$33.10
RS.36	Registration of Portable Water Suppliers		\$32.10	P	X	\$33.10
RS.37	Undertakers Premises/Mortuary					
RS.37.1	Application for approval to operate an undertakers premises		\$139.60	F	X	\$144.00
RS.37.2	Periodic inspection of undertakers premises		\$107.45	P	X	\$110.60
RS.37.3	Application for approval to operate a mortuary		\$139.60	F	X	\$143.80
RS.37.4	Periodic inspection of mortuary		\$153.20	F	X	\$158.00
RS.38	Water Sampling					
RS.38.1	Bacteriological water sampling for public swimming pools		\$82.15	P	X	\$84.60
RS.38.2	Chemical and bacteriological water sampling and investigation for on-site water tanks including annual sampling of commercial premises and supplies		\$152.20	F	X	\$157.00
RS.38.3	Cryptosporidium Analysis		POA	M	X	POA
RS.38.4	Inspection of water carting vehicle/tanks		\$86.32	P	X	\$89.00
RS.39	Education Courses run by Council					
RS.39.1	Skin penetration, beauty treatment and hairdressing training courses		\$40.00	F	Y	\$45.00

Index	Fee Description	Conditions	2013/2014 Fees	Pricing Policy	GST	2014/2015 Fees
RS.39.2	Pool maintenance training courses		\$40.00	F	Y	\$45.00
RS.39.3	Food handling education course (No charge for non-profit organisations)		\$40.00	F	Y	\$45.00
RS.39.4	Not-for-profit organisations		Free	N		Free
RS.40	Public Health Act 2010 and Regulations 2012					
RS.40.1	Improvement Notices and Prohibition Orders under the Public Health Regulations 2012 - Prescribed Fee		\$515.00	S	X	\$530.00
RS.40.2	Improvement Notices and Prohibition Orders under the Public Health Regulations 2012 - In any other case		\$225.00	S	X	\$260.00
RS.40.3	Re-inspection of premises subject of prohibition order	Per hour (Minimum charge 1/2 hour to a maximum charge of 2 hours - excluding travel time)	\$227.27	S	X	\$250.00
RS.40.4	Notification of installation or carrying out a function under Public Health Act and Regulations Issue notice or order for Regulated Systems		\$100.00	S	X	\$100.00
REGULATION AND ENFORCEMENT						
RS.41	Location Costs for Stolen and Abandoned Vehicles					
RS.41.1	Zone 1 - Richmond, Windsor, Pitt Town, Cattai		\$158.35	F	X	\$163.10
RS.41.2	Zone 2 - Kurrajong, Kurrajong Heights, East Kurrajong, Glossodia, Blaxland Ridge and Ebenezer area		\$164.40	F	X	\$170.00
RS.41.3	Zone 3 - Bilpin, Colo Heights, Upper Colo areas		\$221.00	F	X	\$227.60
RS.41.4	Zone 4 - MacDonald Valley, St Albans and to the northern and north eastern boundaries		\$221.00	F	X	\$227.60
RS.42	Stationery, typing and the like involved in advice to Police and contractor including appropriate photographs		\$50.95	F	X	\$52.50
RS.43	Notification letter to owner, if applicable		\$37.30	F	X	\$38.50
RS.44	Storage charges for keeping vehicle in custody	At Contractors' Costs	POA*	F	X	POA
RS.45	Towing and removal (by Contractor)		\$91.45	F	X	\$94.20

Index	Fee Description	Conditions	2013/2014 Fees	Pricing Policy	GST	2014/2015 Fees
RS.46	Advertising Costs of abandoned vehicles					
RS.46.1	Advertising Cost	Advertising cost, Plus administration fee	POA*	M	Y	POA
RS.46.2	Administration Fee	Plus Advertising cost	\$106.90*	F	Y	\$110.10
RS.47	Other Impounding and Retrieval Fees					
RS.47.1	Retrieval of confiscated shopping trolleys		\$158.35	R	X	\$163.10
RS.47.2	Retrieval of confiscated charity bins		\$267.40	R	X	\$275.40
RS.48	Environmental Protection Inspections					
RS.48.1	Non-compliance reinspection of business after environmental review	Per hour	\$97.18	F	Y	\$110.20
RS.48.2	Request for voluntary environmental review of business	Per hour	\$97.18	F	Y	\$110.20
RS.48.3	Noise level reading and assessment	Per hour	\$97.18	F	X	\$100.20
RS.48.4	Noise level reading and assessment after normal business hours	Per hour	\$184.68	F	X	\$190.20
RS.48.5	Audit of industrial/commercial premises for environmental compliance	Per hour	\$97.18	F	X	\$100.20
RS.48.6	Research and preparation of report for site history of contamination	Per hour	\$97.18	F	X	\$100.20
RS.48.7	Intensive agriculture premises inspection (piggeries, poultry, cattle etc.)		\$126.55	F	X	\$130.50
RS.49	Environmental Protection Notices under POEO Act 1997					
RS.49.1	Issuing notice administration fee		\$466.00	S	X	\$492.00
RS.49.2	Monitoring compliance to notice issued	Per hour	\$97.18	F	X	\$100.20
RS.49.3	Outstanding notices or orders information in register		\$88.75	F	X	\$91.50
RS.50	Public Health Consultation and Investigation					
RS.50.1	Professional and Administration Fees					
RS.50.2	Staff technical/professional project services-General Manager, Directors, Managers	Per hour or part thereof (Min \$150.00)	\$120.00*	M	Y	\$150.00
RS.50.3	Staff technical/professional project services-General	Per hour or part thereof (Min \$100.00)	\$90.00*	M	Y	\$100.00

Index	Fee Description	Conditions	2013/2014 Fees	Pricing Policy	GST	2014/2015 Fees
RS.50.4	Staff technical/professional project services-Administrative/Clerical	Per hour or part thereof (Min \$75.00)	\$60.00*	M	Y	\$75.00
RS.50.5	Pollution control investigation charges to polluter	Per hour	\$106.90	F	Y	\$110.10
RS.51	Certificates/Documents Available-Regulatory Services					
RS.51.1	S735A LGA Certificate-Outstanding notices and orders		\$88.75	F	X	\$91.50
RS.51.2	S735A LGA Certificate-Urgency Fee (24hrs turnaround)	Plus Fee RS.49.1	\$55.50*	F	X	\$57.20
RS.51.3	S121ZP, EP and A Certificate-Outstanding notices and orders		\$88.75	F	X	\$91.50
RS.51.4	S121ZP, EP and A Certificate-Urgency Fee (24hrs turnaround)	Plus Fee RS.49.3	\$55.50*	F	X	\$57.20
RS.52	Registration Fees					
RS.52.1	A' Framed sign on Council land	Annual administration fee	\$139.60	F	X	\$143.80
SEWERAGE MANAGEMENT FACILITIES						
RS.53	Sales					
RS.53.1	Sale of septic irrigation warning signs		\$18.70	F	Y	\$19.25
RS.54	Certificates/Documents available					
RS.54.1	Copy of approval to operate septic system		\$23.14	F	X	\$23.85
RS.55	Septic Tanks Inspections					
RS.55.1	Licence Fee - "Approval to operate a Sewerage Management Facility"		\$128.35	F	X	\$132.20
RS.55.2	Pre-purchase inspection of Sewerage Management Facility and written report		\$128.35	F	X	\$132.20
RS.55.3	Sewerage Management Facility re-inspection Fee where 'still failing' OR 'not ready'		\$95.00	F	X	\$97.85
RS.55.4	Application to install a centralised Sewage Management Facility (e.g. Community Title)	Plus \$193.40 per allotment	\$279.30*	F	X	\$287.70
RS.55.5	Inspection of Decommissioned Sewerage Management Facility		\$67.75	P	X	\$69.80
RS.55.6	Septic tank application fee to install a Domestic System	Including assessment, 2 inspections and approval to operate for first year	\$454.50*	M	X	\$468.20

Index	Fee Description	Conditions	2013/2014 Fees	Pricing Policy	GST	2014/2015 Fees
RS.56	Septic tank application fee to install a Commercial System					
RS.56.1	Commercial septic systems less than \$20,000	Includes assessment and 2 inspections	\$454.50*	M	X	\$468.20
RS.56.2	Commercial septic systems greater than or equal to \$20,000	Includes assessment and 4 inspections	\$1,033.00*	M	X	\$1,064.00
RS.56.3	Application to alter a Sewerage Management System	50% of current application fee for same system	POA*	M	X	POA
RS.56.4	Application fee to install a Greywater System	Including assessment, 2 inspections and approval to operate for first year	\$454.50*	M	X	\$468.20
RS.57	Inspection of Private Water Scheme plumbing and drainage					
RS.57.1	Inspection of private water scheme plumbing and drainage	Per inspection	\$165.30	M	X	\$171.00
RS.58	Plumbing and Drainage Inspections					
RS.58.1	Single Inspection	Internal and external	\$130.27	M	X	\$135.00
WASTE COLLECTION						
RS.59	Waste Bins					
RS.59.1	120/140L size		\$58.59	R	X	\$60.35
RS.59.2	240L size		\$86.32	R	X	\$88.90
RS.59.3	Second hand 240L		\$39.05	R	X	\$40.20
RS.59.4	Recycle bins		\$83.32	R	X	\$85.80
RS.59.5	Educational stickers for Waste and Recycling Bins		\$5.50	R	Y	\$5.70
OTHER						
RS.60	Advertising Structures/Signs					
RS.60.1	Sandwich Board Annual fee		\$139.60	R	X	\$143.80
RS.60.2	Retrieval of confiscated unauthorised sign on public land		\$199.50	R	X	\$205.50
RS.61	Land Clearing - Hazard reduction (S66 Rural Fires Act)					
RS.61.1	Contractor's cost for land clearing	Contractors' Fee, Plus Fee RS.58.2	POA*	M	Y	POA
RS.61.2	Administration Charge	Plus Fee RS.58.1	\$363.60*	R	Y	\$374.50
RS.62	Sale of Tender Documents					
RS.62.1	Sale of Tender documents (printing, paper, expertise, overheads)		POA	F	Y	POA

Index	Fee Description	Conditions	2013/2014 Fees	Pricing Policy	GST	2014/2015 Fees
DEVELOPMENT SERVICES						
CONSTRUCTION and DEVELOPMENT						
DS.1	Development Applications					
DS.1.1	General Development	See Clause 246B EPA Regulation 2000				
DS.1.2	Not exceeding \$5,000		\$110.00	S	X	\$110.00
DS.1.3	\$5,001 - \$50,000	Plus \$3.00 each \$1,000 above \$5,000	\$170.00*	S	X	\$170.00
DS.1.4	\$50,001 - \$250,000	Plus \$3.64 each \$1,000 above \$50,000	\$352.00*	S	X	\$352.00
DS.1.5	\$250,001 - \$500,000	Plus \$2.34 each \$1,000 above \$250,000	\$1,160.00*	S	X	\$1,160.00
DS.1.6	\$500,001 - \$1,000,000	Plus \$1.64 each \$1,000 above \$500,000	\$1,745.00*	S	X	\$1,745.00
DS.1.7	\$1,000,001 - \$10,000,000	Plus \$1.44 each \$1,000 above \$1,000,000	\$2,615.00*	S	X	\$2,615.00
DS.1.8	More than \$10,000,000	Plus \$1.19 each \$1,000 above \$10,000,000	\$15,875*	S	X	\$15,875.00
DS.1.9	Change of Use (where no cost of works)	See Clause 250 EPA Regulations 2000	\$285.00	S	X	\$285.00
DS.2	Dwelling-houses					
DS.2.1	Dwelling-houses not exceeding \$100,000	See Clause 247 EPA Regulations 2000	\$455.00	S	X	\$455.00
DS.2.2	Dwelling-houses exceeding \$100,000	Fee calculated according to General Development Refer to Fees DS.1	POA*	S	X	POA
DS.3	Development Application for Tree Removal					
DS.3.1	1 to 5 trees		\$113.53	P	X	\$116.94
DS.3.2	6 to 25 trees		\$251.33	P	X	\$258.87
DS.3.3	More than 25 trees	Fee calculated according to General Development Refer to Fees DS.1	POA*	S	X	POA
DS.4	Development Application for Tree Pruning					
DS.4.1	1 to 5 trees		\$82.64	P	X	\$85.12
DS.4.2	6 to 25 trees		\$192.86	P	X	\$198.65
DS.4.3	More than 25 trees	Fee calculated according to General Development Refer to Fees DS.1	POA*	S	X	POA
DS.5	Development Application for Pools					
DS.5.1	Pool - Permanent	Fee calculated according to General Development Refer to Fees DS.1	POA*	S	X	POA
DS.5.2	Pool - Temporary (e.g. inflatable, self-supporting)	Minimum charge under General Development Refer to Fees DS.1	\$110.00	S	X	\$110.00
DS.6	Notification of Development Applications (Hawkesbury DCP)					
DS.6.1	Requiring adjoining owners letters only (up to 20 properties)		\$144.41	P	X	\$151.00

Index	Fee Description	Conditions	2013/2014 Fees	Pricing Policy	GST	2014/2015 Fees
DS.6.2	Requiring adjoining owners letters only (21 to 100 properties)		\$254.63	P	X	\$273.00
DS.6.3	Requiring adjoining owners letters only (more than 100 properties)		\$364.86	P	X	\$386.00
DS.6.4	Requiring adjoining owners' letters and advertisement		\$363.72	P	X	\$385.00
DS.7	Building Construction Certificates					
DS.7.1	Dwelling (Class 1,4)		\$1,102.31	M	Y	\$1,135.38
DS.7.2	Dwelling Additions - Minor	Works < or equal to \$100,000	\$881.87	M	Y	\$700.00
DS.7.3	Dwelling Additions - Major	Works > \$100,001	\$881.87	M	Y	\$881.87
DS.7.4	Dual Occupancy		\$2,204.63	M	Y	\$2,270.77
DS.7.5	Residential Flat Building (Class 2)	Plus \$380.35 per unit	\$1,102.31*	M	Y	\$1,135.38
DS.7.6	Commercial (Class 3,5,6 and 9)	Per 500m ² floor area, Or \$551.00 per unit (whichever is greater)	\$1,102.31*	M	Y	\$1,135.38
DS.7.7	Industrial (Class 7 and 8)	Per 500m ² floor area, Or \$551.00 per unit (whichever is greater)	\$1,102.31*	M	Y	\$1,135.38
DS.7.8	Pools		\$529.10	M	Y	\$544.97
DS.7.9	Other (Class 10) (sheds, garages etc.)	Or \$3.31 per m ² floor area (whichever is greater)	\$220.44*	M	Y	\$227.05
DS.7.10	Demolition	Or \$3.31 per m ² floor area (whichever is greater)	\$220.44*	M	Y	\$227.05
DS.8	Certifiers' review (Engineering or Building) of works (not covered by above or elsewhere) - rate per hour	\$300 for first hour, then \$150 per hour or part thereof	\$154.95	M	Y	POA
DS.9	Amended Building Construction Certificate (Minor change)	25% of original CC Fee	POA*	M	Y	POA
DS.10	Amended Building Construction Certificate (Major change)	50% of original CC Fee	POA*	M	Y	POA
DS.11	Additional Fees					
DS.11.1	Bushfire Assessment Level (BAL) - Risk assessment	Includes inspection	\$337.38	M	Y	\$382.25
DS.11.2	Hoarding application fee	Plus Fee DS.11.3 or Fee DS.11.4		M	X	\$200.00
DS.11.3	Type "A" Hoarding weekly rate	Per m ² up to 4 weeks, \$16.00 per m ² thereafter Plus Fee DS.11.2		M	X	\$20.00
DS.11.4	Type "B" Hoarding weekly rate	Per linear metre Plus Fee DS.11.2		M	X	\$15.00
DS.11.5	Mandatory inspection prior to release of Construction Certificate		\$154.95	M	Y	\$159.60

Index	Fee Description	Conditions	2013/2014 Fees	Pricing Policy	GST	2014/2015 Fees
DS.12	Scanning of hard copy documents and conversion into electronic format					
DS.12.1	Documents (except DA form) are provided in electronic format (e.g. PDF)	File conversion fee may still apply see below	Free	N		Free
DS.12.2	S96(1) Applications			N		Free
DS.12.3	Applications (Value of works less than \$100,000)		\$21.38	M	Y	\$22.02
DS.12.4	Applications (Value of works between \$100,001 and \$500,000)		\$42.77	M	Y	\$44.05
DS.12.5	Applications (Value of works between \$500,001 and \$1,000,000)		\$85.53	M	Y	\$88.10
DS.12.6	Applications (Value of works between \$1,000,001 and \$2,000,000)		\$267.34	M	Y	\$275.36
DS.12.7	Applications (Value of works greater than \$2,000,000)		\$588.00	M	Y	\$605.64
DS.12.8	Applications (Any value) - Not for Profit Organisations		Free	N		Free
DS.12.9	Subdivision - DA, Eng., CC and Sub Cert (3 Lots or less)		\$42.77	M	Y	\$44.05
DS.12.10	Subdivision - DA, Eng., CC and Sub Cert (4-19 Lots)		\$133.67	M	Y	\$137.68
DS.12.11	Subdivision - DA, Eng., CC and Sub Cert (20 lots or more and/or incorporating a road)		\$609.47	M	Y	\$627.75
DS.12.12	Subdivision - Boundary adjustment under LEP 2012		\$133.67	M	Y	\$137.68
DS.13	Miscellaneous Documents					
DS.13.1	Minimum Charge		\$26.75	M	Y	\$27.55
DS.13.2	Up to A4	Per page	\$2.69	M	Y	\$2.77
DS.13.3	A3	Per page	\$5.37	M	Y	\$5.53
DS.13.4	Documents greater than A3		\$21.38	M	Y	\$22.02
DS.14	File conversion of electronic documents					
DS.14.1	Documents (except application or certificate form) are provided in digital format consistent with Council naming conventions and file format requirements		Free	N		Free
DS.14.2	S96(1) Applications			N		Free
DS.14.3	Applications (Value of works less than \$100,000)		\$10.69	M	Y	\$11.01
DS.14.4	Applications (Value of works between \$100,001 and \$500,000)		\$21.38	M	Y	\$22.02

Index	Fee Description	Conditions	2013/2014 Fees	Pricing Policy	GST	2014/2015 Fees
DS.14.5	Applications (Value of works between \$500,001 and \$1,000,000)		\$42.77	M	Y	\$44.05
DS.14.6	Applications (Value of works between \$1,000,001 and \$2,000,000)		\$133.67	M	Y	\$137.68
DS.14.7	Applications (Value of works greater than \$2,000,000)		\$294.04	M	Y	\$302.86
DS.14.8	Applications (Any value) - Not for Profit Organisations		Free	N		Free
DS.15	Subdivision (DA, Eng., CC and Sub Cert)					
DS.15.1	Subdivision - DA, Eng., CC and Sub Cert (3 Lots or less)		\$21.38	M	Y	\$22.02
DS.15.2	4 - 19 Lots		\$66.84	M	Y	\$68.85
DS.15.3	20 lots or more and/or incorporating a road		\$304.74	M	Y	\$313.88
DS.15.4	Boundary adjustments under LEP 2012		\$66.84	M	Y	\$68.85
DS.16	Stamping additional hard copy plans	When in excess of 1 set for applicant	\$21.80	M	Y	\$22.45
	Building projects (other than dwellings and residential additions) which involve civil works, e.g. car parks, drainage, etc. will be subject to the additional CC fees in the Subdivision and Civil Works section of this document					
DS.17	Building Compliance Certificates	Includes all inspections				
DS.17.1	Residential (Class 1,4)		\$925.88	M	Y	\$953.66
DS.17.2	Residential Additions		\$925.88	M	Y	\$953.66
DS.17.3	Residential Flat Building (Class 2)	Per unit	\$925.88	M	Y	\$953.66
DS.17.4	Commercial (Class 3,5,6 and 9)	Per unit Or \$925.88 per 500m ² floor area (whichever is greater)	\$925.88*	M	Y	\$953.66
DS.17.5	Industrial (Class 7 and 8)	Per unit Or \$925.88 per 500m ² floor area (whichever is greater)	\$925.88*	M	Y	\$953.66
DS.17.6	Other Class 10 structures		\$286.55	M	Y	\$295.15
DS.17.7	Demolition		\$286.55	M	Y	\$295.15
DS.18	Pools					
DS.18.1	In ground	Permanent	\$286.55	M	Y	\$295.15
DS.18.2	Above ground	Permanent	\$143.28	M	Y	\$147.58
DS.18.3	Temporary	e.g. inflatable, self-supporting	\$70.00	M	Y	\$72.10
DS.18.4	Re-inspection where failed or not ready		\$143.28	M	Y	\$147.58
DS.18.5	Single Inspection		\$143.28	M	Y	\$147.58
DS.18.6	Single inspection (Swimming Pools only - for portable/inflatable pools or where Swimming Pool Compliance Certificate is required) - First Year		Free	N		Free

Index	Fee Description	Conditions	2013/2014 Fees	Pricing Policy	GST	2014/2015 Fees
DS.18.7	Single inspection (Swimming Pools only - for portable/inflatable pools or where Swimming Pool Compliance Certificate is required) - Subsequent years		\$100.00	M	Y	\$103.00
DS.19	Occupation Certificates					
DS.19.1	Occupation Certificate - Class 1 (or combined Class 1 and 10)		\$178.61	M	Y	\$183.97
DS.19.2	Occupation Certificate - Class 10 (50% of Class 1)		\$89.30	M	Y	\$91.98
DS.19.3	Occupation Certificate - Class 2-9		\$357.21	M	Y	\$367.93
DS.19.4	Re-inspection where failed		\$154.95	M	Y	\$159.60
DS.20	Septic Tanks					
DS.20.1	Septic tank application fee to install a Domestic System	Including assessment, two inspections and approval to operate for first year	\$454.50*	M	X	\$468.20
DS.21	Septic tank application fee to install a Commercial System					
DS.21.1	Commercial septic systems less than \$20,000	Includes assessment and two inspections	\$454.50*	M	X	\$468.20
DS.21.2	Commercial septic systems greater than or equal to \$20,000	Includes assessment and four inspections	\$1,033.00*	M	X	\$1,064.00
DS.21.3	Licence Fee - "Approval to operate a Sewerage Management Facility".		\$128.35	F	X	\$132.20
DS.21.4	Application to alter a Sewerage Management System	50% of current application fee for same system	POA*	M	X	POA
DS.21.5	Application fee to install a Greywater System	Including assessment, two inspections and approval to operate for first year	\$454.50*	M	X	\$468.20
DS.22	Plumbing and Drainage Inspections					
DS.22.1	Single Inspection	Internal and external	\$130.28	M	X	\$135.00
DS.23	Resited Dwellings					
DS.23.1	Refundable Deposit - Transit Damage		\$1,264.29	M	X	\$1,302.22
DS.23.2	Route inspection fee		\$140.86	M	X	\$145.09
DS.24	Inspection of building	Where it is proposed to have it removed and re-erected				
DS.24.1	Up to distance of 100km		\$459.40	M	X	\$473.18
DS.24.2	In excess of 100km		POA	M	X	POA

Index	Fee Description	Conditions	2013/2014 Fees	Pricing Policy	GST	2014/2015 Fees
DS.25	Complying Development Certificate					
DS.25.1	CDC pre-certificate review (all development types)	\$250 for development up to the value of \$500,000 Or 30% of relevant CDC Fee (Fees DS.25.3 to DS.25.9), whichever is greater		M	Y	POA
DS.25.2	New dwellings, alterations and additions (Class 1)					
DS.25.3	New Dwellings		\$881.37	M	Y	\$907.81
DS.25.4	Dwelling Additions		\$733.02	M	Y	\$755.01
DS.25.5	Pools		\$440.88	M	Y	\$454.11
DS.25.6	Decks, pergolas, carports, garages, (Class 10)	Or \$3.31 per m ² floor area (whichever is greater)	\$220.44*	M	Y	\$227.05
DS.25.7	Boundary Adjustments, Shop fit outs		\$440.88	M	Y	\$454.11
DS.25.8	Advertising Signs		\$363.72	M	Y	\$374.63
DS.25.9	New industrial buildings and additions	Per 500m2 floor area, Or \$440.88 per unit (whichever is greater)	\$881.87*	M	Y	\$908.33
DS.25.10	Demolition		\$213.40	M	Y	\$219.80
DS.25.11	Mandatory inspection prior to release of Complying Development Certificate		\$154.95	M	Y	\$159.60
To ensure that Council's prices for building certification services are competitive, Council will match the price of any genuine written quotation from a private certifier						
SUBDIVISION AND CIVIL WORKS						
DS.26	Development Application Fees					
DS.26.1	New public road (See Clause 249(a)(i) EPA Regulations 2000)	Plus \$65.00 per additional lot	\$665.00*	S	X	\$665.00
DS.26.2	No new road (See Clause 249(a)(i) EPA Regulations 2000)	Plus \$53.00 per additional lot	\$330.00*	S	X	\$330.00
DS.26.3	Strata (See Clause 249(b) EPA Regulations 2000)	Plus \$65.00 per additional lot	\$330.00*	S	X	\$330.00
DS.27	Design Compliance Certificate (Civil Works) or Subdivision Construction Certificate	See Clause 109C EPA Act				
DS.27.1	Full width road construction					
DS.27.2	Residential, commercial and industrial					
DS.27.3	Charge per linear metre	Per linear metre	\$16.53	M	Y	\$17.03
DS.27.4	Minimum Charge		\$703.27	M	Y	\$724.37
DS.27.5	Rural Road					
DS.27.6	Charge per linear metre	Per linear metre	\$7.75	M	Y	\$7.98
DS.27.7	Minimum Charge		\$534.58	M	Y	\$550.62

Index	Fee Description	Conditions	2013/2014 Fees	Pricing Policy	GST	2014/2015 Fees
DS.27.8	Half width road construction					
DS.27.9	Residential, commercial and industrial					
DS.27.10	Charge per linear metre	Per linear metre	\$12.40	M	Y	\$12.77
DS.27.11	Minimum Charge		\$509.27	M	Y	\$524.55
DS.27.12	Access Ways (includes crossings)					
DS.27.13	Residential	Per driveway	\$194.00	M	Y	\$199.82
DS.27.14	Rural	Per driveway	\$315.27	M	Y	\$324.73
DS.27.15	Drainage where no road or access works					
DS.27.16	Charge per linear metre	Per linear metre	\$1.55	M	Y	\$1.60
DS.27.17	Minimum Charge		\$229.33	M	Y	\$236.21
DS.28	Car Parking Areas		\$189.56	M	Y	\$195.25
DS.29	On site stormwater detention		\$305.35	M	Y	\$314.51
DS.30	Certifiers' review (Engineering or Building) of works	\$300 for first hour, then \$150 per hour or part thereof	\$154.95	M	Y	POA
DS.31	Amended Design Compliance Certificate (Civil Works) or Subdivision Construction Certificate - Minor change to CC	25% of original CC Fee	POA *	M	Y	POA
DS.32	Amended Design Compliance Certificate (Civil Works) or Subdivision Construction Certificate - Major change to CC	50% of original CC Fee	POA*	M	Y	POA
DS.33	Issue 88B signing of Plan (and related documents)		\$154.95	M	Y	\$159.60
DS.34	Compliance Certificate fees (Civil Works) or Subdivision Works Inspection	See Clause 109C EPA Act				
DS.34.1	Full width road construction					
DS.34.2	Residential, commercial and industrial					
DS.34.3	Charge per linear metre	Per linear metre	\$33.06	M	Y	\$34.05
DS.34.4	Minimum Charge		\$1,364.59	M	Y	\$1,405.53
DS.34.5	Rural Road					
DS.34.6	Charge per linear metre	Per linear metre	\$15.39	M	Y	\$15.85
DS.34.7	Minimum Charge		\$1,066.47	M	Y	\$1,098.46
DS.34.8	Half width road construction					
DS.34.9	Residential, commercial and industrial					
DS.34.10	Charge per linear metre	Per linear metre	\$24.79	M	Y	\$25.53
DS.34.11	Minimum Charge		\$1,018.43	M	Y	\$1,048.98
DS.34.12	Access Ways (includes crossings)					
DS.34.13	Residential	Per driveway	\$395.74	M	Y	\$407.61

Index	Fee Description	Conditions	2013/2014 Fees	Pricing Policy	GST	2014/2015 Fees
DS.34.14	Rural	Per driveway	\$640.46	M	Y	\$659.67
DS.34.15	Drainage where no Road or access works					
DS.34.16	Charge per linear metre	Per linear metre	\$1.76	M	Y	\$1.81
DS.34.17	Minimum Charge		\$172.51	M	Y	\$177.69
DS.35	Car Parking Areas Compliance Certificate		\$331.90	M	Y	\$341.86
DS.36	On-site stormwater detention		\$508.13	M	Y	\$523.37
DS.37	Certifiers' review (Engineering or Building) of works	\$300 for first hour, then \$150 per hour or part thereof	\$250.00	M	Y	POA
DS.38	Re-inspection fee (where job not ready)		\$240.28	M	Y	\$247.49
DS.39	Subdivision Certificate Fees					
DS.39.1	Subdivision Certificate					
DS.39.2	Torrens Title					
DS.39.3	Torrens Title	Plus Fee DS.39.4	\$309.69*	M	X	\$318.98
DS.39.4	Charge Per Lot as shown on plan	Plus Fee DS.39.3	\$154.33*	M	X	\$158.96
DS.39.5	Community Title					
DS.39.6	Community Title	Plus Fee DS.39.7	\$600.00*	M	X	\$618.00
DS.39.7	Charge Per Lot as shown on plan	Plus Fee DS.39.6	\$154.33*	M	X	\$158.96
DS.39.8	Strata title					
DS.39.9	Strata title	Plus Fee DS.39.10 Plus Fee DS.40	\$494.91*	M	X	\$509.76
DS.39.10	Charge Per Lot as shown on plan	Plus Fee DS.39.9 Plus Fee DS.40	\$154.33*	M	X	\$158.96
DS.40	Mandatory inspection prior to release of Strata Certificate		\$140.86	M	X	\$145.09
DS.41	Re-certification of previously approved plan/Subdivision Certificate		\$190.18	M	X	\$195.89
DS.42	Performance Security Application and Administration Fee					
DS.42.1	Administration Fee - Security for works with a value of less than \$10,000		\$305.35	M	Y	\$314.51
DS.42.2	Administration Fee - Security for works with a value of \$10,000 or more		\$1,065.85	M	Y	\$1,097.83
ADDITIONAL APPLICATION FEES						
DS.43	Integrated Development					
DS.43.1	Administration fee payable to Council in addition to DA Fee	See Clause 253 (1) EPA Reg. 2000	\$140.00	S	X	\$140.00
DS.43.2	Fee payable to each approval body in addition to DA fee	See Clause 253 (4) EPA Reg. 2000	\$320.00	S	X	\$320.00

Index	Fee Description	Conditions	2013/2014 Fees	Pricing Policy	GST	2014/2015 Fees
DS.44	Development Requiring Concurrence					
DS.44.1	Administration fee payable to Council in addition to DA Fee	See Clause 252A (1) EPA Reg. 2000	\$140.00	S	X	\$140.00
DS.44.2	Fee payable to each concurrence authority in addition to DA Fee	See Clause 252A (5) EPA Reg. 2000	\$320.00	S	X	\$320.00
DS.45	Designated Development					
DS.45.1	Administration fee payable to Council in addition to DA Fee	See Clause 251 EPA Reg. 2000	\$920.00	S	X	\$920.00
DS.45.2	Notice and advertising of designated development	See Clause 252 EPA Regulations 2000	\$2,220.00	S	X	\$2,220.00
MODIFICATION AND REVIEW OF DEVELOPMENT CONSENT						
DS.46	Modification of Consent Section 96 EPA Act	See Clause 258 EPA Reg. 2000				
DS.46.1	Minor error, misdescription or miscalculation only (by Applicant) - Section 96(1)		\$71.00	S	X	\$71.00
DS.46.2	Modification involving minimal environmental impact- Section 96(1A) or Section 96AA(1)	50% of original DA fee, OR \$645.00 (whichever is less), Plus Fee DS.6 Notification Fee where required	POA*	S	X	POA
DS.47	Modification not of minimal environmental impact- Section 96(2) or Section 96AA(1)					
DS.47.1	Original DA fee less than \$100	50% of original DA fee, Plus Fee DS.6 Notification Fee	POA*	S	X	POA
DS.47.2	Original DA fee \$100 or more, but no building, demolition or work	50% of original DA fee, Plus Fee DS.6 Notification Fee	POA*	S	X	POA
DS.47.3	Dwelling \$100,000 or less	\$190.00 Plus Fee DS.6 Notification Fee	\$190.00*	S	X	POA
DS.47.4	Other Development up to \$5,000	\$55.00 Plus Fee DS.6 Notification Fee	\$55.00*	S	X	POA
DS.47.5	Other Development \$5,001 - \$250,000	\$85.00 Plus \$1.50 each \$1,000, Plus Fee DS.6 Notification Fee	\$85.00*	S	X	POA
DS.47.6	Other Development \$250,001 - \$500,000	\$500.00 Plus \$0.85 each \$1,000 above \$250,000 Plus Fee DS.6 Notification Fee	\$500.00*	S	X	POA
DS.47.7	Other Development \$500,001 - \$1,000,000	\$712.00 Plus \$0.50 each \$1,000 above \$500,000 Plus Fee DS.6 Notification Fee	\$712.00*	S	X	POA

Index	Fee Description	Conditions	2013/2014 Fees	Pricing Policy	GST	2014/2015 Fees
DS.47.8	Other Development \$1,000,001 - \$10,000,000	\$987.00 Plus \$0.40 each \$1,000 above \$1,000,000 Plus Fee DS.6 Notification Fee	\$987.00*	S	X	POA
DS.47.9	Other Development more than \$10,000,000	\$4,737.00 Plus \$0.27 each \$1,000 above \$10,000,000 Plus Fee DS.6 Notification Fee	\$4,737.00*	S	X	POA
DS.48	Review of Determination DA - Under Section 82A of EPA Act 1979	See Clause 257 EPA Regulations 2000				
DS.48.1	Does not involve erecting a building, demolition or work	50% of original DA fee, Plus Fee DS.6 Notification Fee	POA*	S	X	POA
DS.48.2	Dwelling house \$100,000 or less		\$190.00	S	X	\$190.00
DS.49	Other Development based on estimated value					
DS.49.1	Up to \$5,000		\$55.00	S	X	\$55.00
DS.49.2	\$5,001 - \$250,000	\$85.00 Plus \$1.50 each \$1,000 above \$5,000	\$85.00*	S	X	POA
DS.49.3	\$250,001 - \$500,000	\$500.00 Plus \$0.85 each \$1,000 above \$250,000	\$500.00*	S	X	POA
DS.49.4	\$500,001 - \$1,000,000	\$712.00 Plus \$0.50 each \$1,000 above \$500,000	\$712.00*	S	X	POA
DS.49.5	\$1,000,001 - \$10,000,000	\$987.00 Plus \$0.40 each \$1,000 above \$1,000,000	\$987.00*	S	X	POA
DS.49.6	More than \$10,000,000	\$4,737.00 Plus \$0.27 each \$1,000 above \$10,000,000	\$4,737.00*	S	X	POA
DS.50	Review of Determination S96 - under Section 96AB of EPA Act 1979	See Clause 258(a) EPA Regulations 2000				
DS.50.1	Review of S96 where modification application refused or conditions imposed	50% of original DA fee, Plus Fee DS.6 Notification Fee	POA*	S	X	POA
DS.51	Amend Development, Section 96 or Section 82A application prior to determination					
DS.51.1	Administration fee	10% of DA Fee Plus Fee DS.6 Notification Fee (if required)	POA*	M	X	POA
DS.52	Advertising/notification fee as per original application if required					
DS.52.1	Requiring adjoining owners letters only (up to 20 properties)		\$144.41	M	X	\$151.00

Index	Fee Description	Conditions	2013/2014 Fees	Pricing Policy	GST	2014/2015 Fees
DS.52.2	Requiring adjoining owners letters only (21 to 100 properties)		\$254.63	M	X	\$273.00
DS.52.3	Requiring adjoining owners letters only (more than 100 properties)		\$364.86	M	X	\$386.00
DS.52.4	Requiring adjoining owners' letters and advertisement		\$363.72	M	X	\$385.00
CERTIFICATES AND DOCUMENTS						
DS.53	Certificates/Reports					
DS.53.1	S149 Planning Certificate	See Clause 259 of EPA Regulations 2000				
DS.53.2	S149 (2) Planning Certificate		\$53.00	S	X	\$53.00
DS.53.3	S149 (2) Complying Development Certificate		\$40.00	S	X	\$40.00
DS.53.4	S149 (2) and (5) Planning Certificate		\$133.00	S	X	\$133.00
DS.53.5	Certified copy of S149 Planning Certificate	See Clause 259 EPA Reg. 2000	\$53.00	S	X	\$53.00
DS.53.6	Fax or email of certified copy of S149 Planning Certificate	See Clause 259 EPA Reg. 2000	\$53.00	S	X	\$53.00
DS.54	S149D Building Certificates	See Clause 260 of EPA Regulations 2000				
DS.54.1	Class 1 (fee per dwelling) and Class 10 Buildings		\$250.00	S	X	\$250.00
DS.54.2	Additional Inspections		\$90.00	S	X	\$90.00
DS.55	Class 2-9 Buildings					
DS.55.1	Not Exceeding 200 square metres		\$250.00	S	X	\$250.00
DS.55.2	Exceeding 200 square metres but not exceeding 2,000 square metres	\$250.00 Plus \$0.50 per m ² , over 200 m ²	\$250.00*	S	X	POA
DS.55.3	Exceeding 2,000 square metres	\$1,165.00 Plus \$0.075 per m ² , over 2,000 m ²	\$1,165.00*	S	X	POA
DS.56	Unapproved buildings as described in Clause 260 (3A), (3B) and (3C) of EPA Regulations 2000	As per the EPA Regulations	POA	S	X	POA
DS.56.1	Copy of Building Certificate	See Clause 261 EPA Regulations 2000	\$13.00	S	X	\$13.00
DS.57	Professional and Administration Fees					
DS.57.1	Staff technical/professional project services-General Manager, Directors, Managers	Per hour or part thereof (Min \$150.00)	\$125.00*	M	Y	\$150.00
DS.57.2	Staff technical/professional project services-General	Per hour or part thereof (Min \$100.00)	\$95.00*	M	Y	\$100.00
DS.57.3	Staff technical/professional project services-Administrative/Clerical	Per hour or part thereof (Min \$75.00)	\$65.00*	M	Y	\$75.00
DS.58	Drainage Diagram		\$22.62	S	X	\$23.30

Index	Fee Description	Conditions	2013/2014 Fees	Pricing Policy	GST	2014/2015 Fees
DS.59	S 150 Map Extract Certificate	See Clause 262 EPA Regulations 2000	\$48.18	S	X	\$48.18
DS.60	Registration of all Part 4A or Complying Development Certificates (incl. Construction, Compliance, Occupation, Subdivision and Fire Safety Certificates)	See Clause 263 EPA Regulations 2000	\$36.00	S	X	\$36.00
DS.61	Registration of Essential Services Certificate Annual Fee		\$85.95	S	X	\$85.95
DS.62	Certificate of Stage of Building Work		\$152.06	M	Y	\$156.62
DS.63	Swimming Pools Act					
DS.63.1	Certificate of Compliance - no inspection	See Clause 18 (a) Swimming Pools Regulation 2013	\$70.00	S	X	\$70.00
DS.63.2	Application for Exemption	See Clause 13 Swimming Pools Regulation 2013	\$70.00	S	X	\$70.00
DS.63.3	Swimming Pool Safety Inspection by accredited certifier - first inspection including Certificate of Compliance	See Clause 18 (a) Swimming Pools Regulation 2013	\$150.00	S	X	\$150.00
DS.63.4	Swimming Pool Safety Inspection by accredited certifier - follow up inspection including Certificate of Compliance	See Clause 18 (a) Swimming Pools Regulation 2013	\$100.00	S	X	\$100.00
DS.63.5	Register a swimming pool	See Clause 18 (d) Swimming Pools Regulation 2013	\$10.00	S	X	\$10.00
DS.63.6	Provision of Pool Register information - To owner or tenant or their agent only	See Clause 18 (d) Swimming Pools Regulation 2013	\$10.00	S	X	\$10.00
DS.63.7	Swimming Pool Resuscitation Sign		\$22.52		Y	\$22.52
DS.64	S88G Certificate	See Clause 48 Conveyancing (General) Regulations 2008				
DS.64.1	S88G Certificate - no inspection required	See Clause 48 Conveyancing (General) Regulations 2008	\$10.00	S	X	\$10.00
DS.64.2	S88G Certificate - inspection required	See Clause 48 Conveyancing (General) Regulations 2008	\$35.00	S	X	\$35.00
DS.65	Endorsement of Legal Documents relating to development and subdivision					
DS.65.1	Section 88B - includes inspection		\$181.82	M	X	\$187.27
DS.65.2	Section 88E, positive covenant and restrictions-as-to-user (RATU) - includes inspection		\$181.82	M	X	\$187.27

Index	Fee Description	Conditions	2013/2014 Fees	Pricing Policy	GST	2014/2015 Fees
DS.65.3	Endorsement of amended 88E or 88B - includes inspection		\$90.91	M	X	\$93.64
DS.65.4	Endorsement of Legal Documents by Council Resolution and Seal (where required)		\$454.55	M	X	\$468.19
DS.66	Maps, Plans and Documents					
DS.66.1	Copies of Building Plans					
DS.66.2	Customer printing approved plans from DA Tracker		Free	N		Free
DS.66.3	Copy of Approved Plans (per DA or CC approval) - Class 1 and 10		\$72.72	M	X	\$74.90
DS.66.4	Copy of Approved Plans (per DA or CC approval) - Class 2 - 9		\$144.62	M	X	\$148.96
DS.67	Other Plans					
DS.67.1	B1 sheet		\$11.05	M	X	\$11.38
DS.67.2	A1 sheet		\$8.47	M	X	\$8.72
DS.67.3	A2 sheet		\$4.55	M	X	\$4.69
DS.67.4	A3 sheet		\$1.14	M	X	\$1.17
DS.67.5	A4 sheet		\$0.62	M	X	\$0.64
DS.68	Photocopies					
DS.68.1	Black and white - A4	Per copy	\$0.60	P	X	\$0.60
DS.68.2	Black and white - A3	Per copy	\$1.20	P	X	\$1.20
DS.68.3	Studies, reports and other documents	Cost Plus 50%	POA*	M	X	POA
DS.69	Administration Fees for Withdrawn Applications and Certificates					
DS.69.1	Administration Fee: Cancelled or withdrawn applications for certificates, diagrams, etc. (deducted from refund)		\$32.12	M	X	\$33.08
DS.69.2	Administration Fee: Cancelled or withdrawn applications for DA, CC (building and engineering), S96, S82A applications (deducted from refund)		\$64.24	M	X	\$66.17
DS.70	Refunds for Withdrawn Applications and Certificates- (DA, CC, CDC, SC, S96, S82A only)					
DS.70.1	Withdrawn within 3 days of lodgement - 100% of DA	100% of DA Fee, Admin, Scanning	POA*	M	X	POA
DS.70.2	Withdrawn/Refund (after 7 day letter issued) - 50% of DA Fee (excluding Scanning, Admin Fee and PlanFirst levy)	50% of DA Fee only	POA*	M	X	POA

Index	Fee Description	Conditions	2013/2014 Fees	Pricing Policy	GST	2014/2015 Fees
MISCELLANEOUS FEES						
DS.71	Flood level advice - Basic	Letter confirming 1:100 level only		M	X	\$100.00
DS.72	Flood level advice - Detailed	Letter confirming 1:100 level, likely velocity, site specific matters etc.		M	X	\$500.00
DS.73	Amusement devices	Defined Sec 3 of Const Safety Act	\$46.90	M	X	\$48.31
DS.74	Solid fuel heater Approval (S68 Activity under the Local Govt Act 1993)			M	X	\$85.00
DS.75	Fees, Charges or Penalties permitted under legislation other than LGA	As specified in relevant legislation	POA	S	X	POA
STRATEGIC PLANNING SERVICES						
ADDITIONAL APPLICATION FEES						
SP.1	Application to Prepare Local Environmental Plans (LEP's) or Preparation/Amendment of Development Control Plan (DCP)					
SP.1.1	Planning proposals relating to Section 73A of the Environment Planning and Assessment Act 1979 matters	Subject to agreement of Department of Planning and Infrastructure	\$2,066.00	M	X	\$2,150.00
SP.1.2	Planning proposal relating to LEP Definitions, Clauses, Heritage items, Reclassification of land or minor additional permitted uses within existing zone	Refund of 50% of fee if Council resolves not to proceed to Department of Planning and Infrastructure Gateway Process. In all other circumstances there will be no refund	\$7,747.50*	M	X	\$8,000.00
SP.1.3	Planning proposal relating to a change of zoning and/or minimum allotment size provisions	Refund of 50% of fee if Council resolves not to proceed to Department of Planning and Infrastructure Gateway Process. In all other circumstances there will be no refund	\$15,495*	M	X	\$16,000.00
SP.1.4	Preparation or variation to DCP	Quotation on application - written response will be quoted at professional rate per hour	POA	M	X	POA
SP.1.5	Advertising for all applications	As per Fee DS.6.4 Notification of Development Applications	\$363.72*	M	X	\$385.00
CERTIFICATES AND DOCUMENTS						
SP.2	Hawkesbury Development Control Plan					
SP.2.1	Hard Copy - DCP and Specs		\$121.27	M	X	\$124.91
SP.2.2	Hard Copy - DCP only		\$85.95	M	X	\$88.53
SP.2.3	Hard Copy - Specs only		\$61.77	M	X	\$63.62
SP.2.4	Yearly Update subscription		\$119.10	M	X	\$122.67

Index	Fee Description	Conditions	2013/2014 Fees	Pricing Policy	GST	2014/2015 Fees
SP.2.5	CD Rom		\$29.75	M	X	\$30.64
SP.2.6	Download from Council's website		Free	N		Free
SP.2.7	Local Environmental Plan 1989 or 2012					
SP.2.8	Written document		\$14.36	M	X	\$14.79
SP.2.9	Coloured map set		\$400.18	M	X	\$412.19
SP.2.10	Single colour map		\$52.89	M	X	\$54.48
SP.2.11	S94 Plan and S94a Plan					
SP.2.12	Hardcopy of Plan	See Clause 29 EPA Reg 2000	\$8.00	M	X	\$8.24
SP.2.13	Internet download		Free	N		Free
MISCELLANEOUS FEES						
SP.3	Section 94/94a Contribution for					
SP.3.1	Community Facilities, Recreational Buildings	As Per current Section 94/94a Plan Adopted by Council	POA	M	X	POA
SP.3.2	Park Improvements	As Per current Section 94/94a Plan Adopted by Council	POA	M	X	POA
SP.3.3	Intersection Improvements	As Per current Section 94/94a Plan Adopted by Council	POA	M	X	POA
SP.3.4	Car Parking, Investigations/Plans, Land Acquisitions, Regional Works, Roadworks etc.	As Per current Section 94/94a Plan Adopted by Council	POA	M	X	POA
CONSTRUCTION AND MAINTENANCE						
CONSTRUCTION AND MAINTENANCE						
CM.1	Road Opening Permit		\$187.39	F	X	\$200.00
	Restoration charges below must be paid in addition to the Road Opening Permit. Unless otherwise stated, all charges are per m² and minimum area charged is 2m² Also, any work performed adjacent to a state road or town centre, will incur an additional charge for traffic control to RMS standards, based on actual cost plus 5%					
CM.2	Driveways- Restoration					
CM.2.1	Concrete					
CM.2.2	Residential driveways 100mm thick	Per m ² (Minimum area 2m ²)	\$257.03*	F	X	\$275.00
CM.2.3	Industrial driveways 150mm thick concrete	Per m ² (Minimum area 2m ²)	\$295.63*	F	X	\$335.00
CM.2.4	Pavers (concrete/clay)					
CM.2.5	Returned to Council's works depot in good order	Per m ² (Minimum area 2m ²)	\$347.18*	F	X	\$357.60
CM.2.6	Where Council is required to supply pavers	Per m ² (Minimum area 2m ²)	\$418.06*	F	X	\$430.60
CM.2.7	Driveway Inspections Fees (Residential)					
CM.2.8	First two inspections		\$117.39	F	X	\$130.00
CM.2.9	Subsequent inspections		\$66.11	F	X	\$70.00

Index	Fee Description	Conditions	2013/2014 Fees	Pricing Policy	GST	2014/2015 Fees
CM.2.10	Driveway Inspections Fees (Commercial/Industrial)					
CM.2.11	Inspection - Commercial/Industrial		\$234.77	F	X	\$270.00
CM.3	Footpaths - Restoration					
CM.3.1	Concrete path	Per m ² (Minimum area 2m ²)	\$230.93*	F	X	\$237.86
CM.3.2	Concrete with bitumen/asphalt surface paths	Per m ² (Minimum area 2m ²)	\$243.58*	F	X	\$250.89
CM.3.3	Pavers (concrete/clay)					
CM.3.4	Returned to Council's works depot in good order	Per m ² (Minimum area 2m ²)	\$215.17*	F	X	\$221.63
CM.3.5	Where Council is required to supply pavers	Per m ² (Minimum area 2m ²)	\$251.33*	F	X	\$258.87
CM.3.6	Bitumen surfaces/paths	Per m ² (Minimum area 2m ²)	\$163.16*	F	X	\$168.05
CM.3.7	Formed paths - earth, grassed or gravel	Up to 15m ² Per m ² (Minimum area 2m ²)	\$127.89*	F	X	\$135.00
CM.3.8	Formed paths - earth, grassed or gravel	For areas greater than 15m ² , the first 15m ² is charged as per Fee CM.3.7 Plus \$25.75 per m ² per additional m ²	\$25.00*	F	X	POA
CM.3.9	Non-Formed paths (All rural areas)	Per m ² (Minimum area 2 m ²)	\$12.00*	F	X	\$12.36
CM.4	Kerbing and Guttering - Restoration	Per linear metre				
CM.4.1	Concrete kerb and gutter	Per metre (Minimum length 2m)	\$305.20*	M	X	\$314.36
CM.5	Roads - Restoration					
CM.5.1	Formed roads (earth or gravel)	Per m ² (Minimum area 2m ²)	\$180.78*	M	X	\$186.20
CM.5.2	Bitumen or asphalt surface (max 23mm thick A.C.)					
CM.5.3	Per opening up to 50m ²	Per m ² (Minimum area 2 m ²)	\$243.63*	M	X	\$250.94
CM.5.4	Per opening after the first 50m ²	Fee CM.5.3 per m ² Plus \$199.82 per m ² over 50 m ²	\$194.00*	M	X	POA
CM.5.5	Asphaltic concrete pavement (deep lift)					
CM.5.6	Per opening up to 35m ² (Minimum 2m ²)	Up to 35m ² (Minimum area 2m ²)	\$323.02*	M	X	\$332.71
CM.5.7	Per opening after the first 35m ²	For areas greater than 35m ² , the first 35m ² is charged as per Fee CM.3.7 Plus \$291.79 per m ² per additional m ²	\$283.30*	M	X	\$291.80
CM.5.8	Concrete pavement roads	Per m ² (Minimum area 2m ²)	\$467.33*	M	X	\$481.35

Index	Fee Description	Conditions	2013/2014 Fees	Pricing Policy	GST	2014/2015 Fees
CM.6	Kerbing and Guttering - New Construction					
CM.6.1	Kerbing and guttering construction					
CM.6.2	50% of the cost of the work		POA	F	Y	POA
CM.6.3	25% for side boundary on corner block		POA	F	Y	POA
CM.7	Drainage Works	S64 Local Government Act 1993				
CM.7.1	Drainage Catchment 1	Per m ² of site area	\$12.09	F	X	\$12.45
CM.7.2	Drainage Catchment 2	Per m ² of site area	\$6.71	F	X	\$6.91
CM.7.3	Drainage Catchment 3	Per m ² of site area	\$4.44	F	X	\$4.57
CM.7.4	Drainage Catchment 4	Per m ² of site area	\$15.13	F	X	\$15.58
CM.7.5	Drainage Catchment 5	Per m ² of site area	\$5.63	F	X	\$5.80
CM.7.6	Drainage Catchment 6	Per m ² of site area	\$2.32	F	X	\$2.39
CM.8	Private Works / Advertising Signs					
CM.8.1	Industrial Area Advertising Boards					
CM.8.2	Name and Address only		\$157.58	R	Y	\$162.31
CM.8.3	Annual charge for maintaining Name and Address only sign		\$110.00	R	Y	\$113.30
CM.8.4	Name, Address with Logo		\$234.80	R	Y	\$241.84
CM.8.5	Annual charge for maintaining Name, Address with Logo sign		\$165.00	R	Y	\$169.95
CM.9	Traffic Control Barrier Fee					
CM.9.1	Barricades on footways, emergency barricades and lights and temporary footway crossings		POA	F	X	POA
IRRIGATION LICENCE FEE						
CM.10	Permit to Irrigate Fee		\$346.11	M	X	\$356.49
CM.10.1	Annual Licence Fee			M	X	\$150.00
OTHER FEES						
CM.11	Road Occupancy	Events, Crane, Mini Skip etc. must be accompanied by a Traffic Management Plan				
CM.11.1	Permit to close road/footpath/to stand crane/vehicle or for construction	Per day or part thereof		M	X	\$200.00
CM.11.2	Construction Establishment Fee			M	X	\$800.00
CM.11.3	Construction Zone	Per Week Per 12.5m (truck length)		M	X	\$100.00
CM.11.4	Hoarding application fee	Plus Fee CM.11.5 or Fee CM.11.6		M	X	\$200.00

Index	Fee Description	Conditions	2013/2014 Fees	Pricing Policy	GST	2014/2015 Fees
CM.11.5	Type "A" Hoarding weekly rate	Per m ² up to four weeks, \$16.00 per m ² thereafter Plus Fee CM.11.4		M	X	\$20.00
CM.11.6	Type "B" Hoarding weekly rate	Per linear metre Plus Fee CM.11.4		M	X	\$15.00
CM.12	Sale of Tender Documents					
CM.12.1	Sale of Tender documents (printing, paper, expertise, overheads)		POA*	R	Y	POA
CM.13	Road Closures					
CM.13.1	Assess Traffic Management Plan		POA	F	X	POA
DESIGN AND MAPPING						
SALES						
DM.1	Sale of Maps	Supplied from Geographical Information System				
DM.1.1	Category 1: Basic map displaying cadastral information, topographic data such as creeks, rivers and contours	Prices for 1-10 sheets Price for 11 copies or more on application				
DM.1.2	A0 sheet		\$51.00	F	X	\$52.50
DM.1.3	A1 sheet		\$48.50	F	X	\$49.95
DM.1.4	A2 sheet		\$31.75	F	X	\$32.70
DM.1.5	A3 sheet		\$23.75	F	X	\$24.45
DM.1.6	A4 sheet		\$17.25	F	X	\$17.75
DM.1.7	Category 2: Maps containing aerial photography, or maps created from existing data requiring minor manipulation and composition	Prices for 1-10 sheets Price for 11 copies or more on application				
DM.1.8	A0 sheet		\$89.35	F	X	\$92.00
DM.1.9	A1 sheet		\$84.85	F	X	\$87.40
DM.1.10	A2 sheet		\$71.90	F	X	\$74.00
DM.1.11	A3 sheet		\$49.30	F	X	\$50.75
DM.1.12	A4 sheet		\$44.50	F	X	\$45.80
DM.1.13	Category 3: Maps using existing and third party data requiring digitising, manipulation and composition	Maps in Category 3 will be priced on quotation				
DM.1.14	A0 sheet		POA	F	X	POA
DM.1.15	A1 sheet		POA	F	X	POA
DM.1.16	A2 sheet		POA	F	X	POA
DM.1.17	A3 sheet		POA	F	X	POA
DM.1.18	A4 sheet		POA	F	X	POA
DM.1.19	Sale of Tender Documents					
DM.1.20	Sale of Tender Documents (printing, paper, expertise, overheads)	At cost	POA	F	Y	POA

Index	Fee Description	Conditions	2013/2014 Fees	Pricing Policy	GST	2014/2015 Fees
DEPOSITED PLANS						
DM.2	Copy of Deposited Plan (A4)	Purchase of Deposited Plans in not available from Council. Deposited Plans are to be purchased and downloaded from the NSW Land and Property Information (LPI) web site, at their nominated fee. www.lpi.nsw.gov.au	\$10.00		X	N/A
SPECIAL EVENTS						
DM.3	Late Application Fee - Special Events - Traffic Management		\$115.00	P	X	\$115.00
ROAD NAMING - NEW ROAD						
DM.4	Road Naming Application Fee per Road	Naming of a newly created road - Fee excludes the sign and erection of the sign, which is to be priced on application	\$775.00	F	X	\$727.25
PARKS AND RECREATION - HAWKESBURY SPORTS COUNCIL						
PLAYER FEE						
SC.1	Registered Player Fee	Per player	\$6.75	P	Y	\$6.75
GROUND and FACILITY FEES						
SC.2	Basic Ground booking fee	Per field per discipline season	\$624.00*	P	Y	\$643.00
SC.3	Casual Ground Hire	Full day	\$192.00	P	Y	\$198.00
BENSONS SPORTS FIELDS						
SC.4	Casual Turf Wicket Hire	Not including preparation fee	\$383.50*	P	Y	\$383.50
SC.5	Casual Turf Wicket Preparation Fee		\$219.00	P	Y	\$219.00
SC.6	Casual Synthetic Wicket Hire		\$356.50	P	Y	\$356.50
SC.7	Casual Bensons Other Ground Hire		\$356.50	P	Y	\$356.50
OWEN EARLE OVAL						
SC.8	Owen Earle Oval	Not including preparation fee	\$483.00*	P	Y	\$483.00
SC.9	Owen Earle Turf Wicket Preparation		\$254.00	P	Y	\$254.00
CANTEEN HIRE FEES						
SC.10	Per discipline season		\$288.00	P	Y	\$297.00
SC.11	Casual Hire	Per day Plus Fee SC.12	\$148.00*	P	Y	\$152.00
SC.12	Casual Hire - Refundable deposit		\$104.00	P	X	\$107.00
CALL OUT FEES						
SC.13	After hours call out fee for failing to secure buildings or turn off lights		\$143.00	P	Y	\$147.00

Index	Fee Description	Conditions	2013/2014 Fees	Pricing Policy	GST	2014/2015 Fees
FLOODLIGHTING/ELECTRICITY CHARGES						
SC.14	Casual hire	Per hour	\$39.00	P	Y	\$39.00
SC.14.1	1 night	Per week, per season	\$147.00*	P	Y	\$151.00
SC.14.2	2 nights	Per week, per season	\$293.00*	P	Y	\$302.00
SC.14.3	3 nights	Per week, per season	\$440.00*	P	Y	\$453.00
SC.14.4	4 nights	Per week, per season	\$587.00*	P	Y	\$605.00
SC.14.5	5 nights	Per week, per season	\$733.00*	P	Y	\$755.00
SC.14.6	6 nights	Per week, per season	\$880.00*	P	Y	\$906.00
SC.14.7	7 nights	Per week, per season	\$1,027.00*	P	Y	\$1,058.00
KEYS						
SC.15	Refundable key deposit	Per key	\$25.00*	F	X	\$25.00
SC.16	Replacement keys		\$25.00	F	Y	\$25.00
	Each user is required to pay \$25 per key per season. The deposit will be refunded upon the return of the key at the completion of the season To assist in the ground and facility security, every effort will be made to limit the number of keys issued to each ground user. Users are required to return keys at the end of each season Additional or replacement keys, over and above the original key, will only be granted upon written application from the club, justifying why the key is required Associations using various fields must arrange for access to grounds through the home team of each particular ground					
SECURITY/CLEANING BOND/ADMINISTRATION FEE						
SC.17	Casual Bookings refundable security deposit					
SC.17.1	Small Events		\$204.00	P	X	\$204.00
SC.17.2	Large Events		\$1,013.00	P	X	\$1,013.00
SC.18	Casual Administration fee		\$142.00	P	Y	\$142.00
TENNIS AND NETBALL COURT HIRE						
SC.21	North Richmond Tennis Courts					
SC.19.1	Permanent Bookings					
SC.19.2	Per night hour		\$14.00	P	Y	\$14.00
SC.19.3	Per day hour		\$11.50	M	Y	\$11.50
SC.19.4	Casual Bookings					
SC.19.5	Per night hour		\$18.00	P	Y	\$18.00
SC.19.6	Per day hour		\$12.50	M	Y	\$12.50
SCHOOL HIRERS						
SC.20	Primary School	Per field, per school year	\$186.00*	P	Y	\$200.00
SC.21	High School	Per field, per school year	\$284.00*	P	Y	\$305.00
SC.22	Tennis Courts	Per field, per school year	\$90.00*	P	Y	\$97.00
SC.23	Netball Courts	Per field, per school year	\$90.00*	P	Y	\$97.00
SC.24	Primary School Sports Association (P.S.S.A.)	Per competitor, per sport	\$2.50*	P	Y	\$2.50
SC.25	School carnival and/or school event hire	Per day	\$99.00*	P	Y	\$110.00
EVENT BIN HIRE						
SC.26	Supply, Hire and Emptying of Bins	Per bin, per day	\$22.00*	P	Y	\$22.00

Index	Fee Description	Conditions	2013/2014 Fees	Pricing Policy	GST	2014/2015 Fees
COMMERCIAL ORGANISATIONS - HIRE FEES						
SC.27	Commercial hire fees for organisations	Charged at the above rates Plus 25% commercial levy	POA*	P	Y	POA
PARKS AND RECREATION - MCMAHONS PARK						
PLAYER FEE						
MP.1	Registered Player Fee	Per player	\$6.75	E	Y	\$6.75
GROUND and FACILITY FEES						
MP.2	Basic Ground booking fee					
MP.2.1	Sports Oval per discipline season		\$624.00	E	Y	\$643.00
MP.2.2	Per discipline season	Community Groups	\$251.00	E	Y	\$258.00
MP.3	Casual Ground Hire					
MP.3.1	Full day		\$192.00	E	Y	\$198.00
MP.3.2	Kurrajong Community Centre	Includes use of the kitchen				
MP.4	Casual Hall bookings					
MP.4.1	Hall - Half day	4 hours	\$135.00*	E	Y	\$140.00
MP.4.2	Hall - Full day		\$200.00	E	Y	\$206.00
MP.4.3	PA Hire	Per half or full day	\$40.00	E	Y	\$40.00
MP.5	Storage Rate	Per m ² , per season	\$155.00*	E	Y	\$160.00
MP.6	Casual Canteen hire					
MP.6.1	Per day		\$148.00	E	Y	\$152.00
FLOODLIGHTING/ELECTRICITY CHARGES						
MP.7	Casual hire	Per hour	\$39.00	E	Y	\$39.00
MP.7.1	1 night	Per week, per season	\$147.00*	E	Y	\$151.00
MP.7.2	2 nights	Per week, per season	\$293.00*	E	Y	\$302.00
MP.7.3	3 nights	Per week, per season	\$440.00*	E	Y	\$453.00
MP.7.4	4 nights	Per week, per season	\$587.00*	E	Y	\$605.00
MP.7.5	5 nights	Per week, per season	\$733.00*	E	Y	\$755.00
KEYS						
MP.8	Refundable deposit	Per key	\$50.00	E	X	\$50.00
CALL OUTS						
MP.9	Failing to switch off floodlighting		\$143.00	E	Y	\$143.00
MP.10	Failing to secure Canteen/Hall building		\$143.00	E	Y	\$143.00
SECURITY/CLEANING BOND						
MP.11	Casual Bookings refundable security deposit	Minimum charge				
MP.11.1	Small Events		\$204.00	E	X	\$204.00
MP.11.2	Large Events		\$1,013.00	E	X	\$1,013.00
MP.12	Casual Canteen/Hall hire					
MP.12.1	Refundable security deposit		\$200.00	E	X	\$200.00

Index	Fee Description	Conditions	2013/2014 Fees	Pricing Policy	GST	2014/2015 Fees
CASUAL SCHOOL HIRE						
MP.13	Primary School - 1 day	Per week Per term	\$67.00*	E	Y	\$69.00
MP.14	Primary School - 2 days	Per week Per term	\$83.00*	E	Y	\$85.00
MP.15	High School		POA	E	Y	POA
SCHOOL ATHLETICS CARNIVALS						
MP.16	Ground hire		\$110.00	E	Y	\$110.00
MP.17	Canteen/Hall hire		\$62.00	E	Y	\$64.00
MP.18	Ground marking		\$75.00	E	Y	\$77.00
HAWKESBURY OUTREACH COMMUNITY SERVICES						
MP.19	Office Hire	2 offices per year Indexed annually as per Contract, using CPI released by ABS	\$19,206*	E	Y	POA
All hire users (not casual) are required to lodge a key deposit refundable on return of all issued keys						
All hire users are required to leave building premises and amenities clean and tidy						
PARKS AND RECREATION - HAWKESBURY LEISURE CENTRES						
AQUATICS						
LC.1	General					
LC.1.1	Adult		\$5.00	M	Y	\$5.15
LC.1.2	Child		\$3.80	M	Y	\$3.90
LC.1.3	Concession		\$3.80	M	Y	\$3.90
LC.1.4	Family		\$16.50	M	Y	\$17.00
LC.1.5	Spectators		\$2.00	M	Y	\$2.00
LC.2	Vouchers	10 visit passes				
LC.2.1	Adult		\$42.00	M	Y	\$43.00
LC.2.2	Child		\$32.00	M	Y	\$33.00
LC.2.3	Pensioner		\$32.00	M	Y	\$33.00
LC.3	Spa, Sauna, Steamroom	Including swim				
LC.3.1	Casual		\$8.00	M	Y	\$8.20
LC.3.2	Concession		\$5.50	M	Y	\$5.65
LC.3.3	After activity spa		\$7.00	M	Y	\$7.20
LC.4	10 visit spa					
LC.4.1	Casual		\$69.00	M	Y	\$71.00
LC.4.2	Concession		\$48.00	M	Y	\$49.50
LC.5	Birthday parties	Rate per catered person, Plus Fee LC.6 Plus Fee LC.7	\$24.00*	M	Y	\$24.50
LC.6	Birthday parties - Non-catered person		\$15.00	M	Y	\$15.50
LC.7	Birthday parties where number of children exceeds 15	Flat rate	\$35.00	M	Y	\$36.00
LC.8	Fun Days		\$6.00	M	Y	\$6.20
LC.9	Aquatic Facility Hire					
LC.9.1	Carnivals					
LC.9.2	Pool hire	Per hour	\$40.00	M	Y	\$41.00
LC.9.3	Student		\$3.50	M	Y	\$3.60

Index	Fee Description	Conditions	2013/2014 Fees	Pricing Policy	GST	2014/2015 Fees
LC.9.4	Facilities					
LC.9.5	Inflatable	Per 30 minutes	\$50.00	M	Y	\$51.50
LC.9.6	Water Slide	Per 30 minutes	\$30.00	M	Y	\$31.00
LC.9.7	Lagoon	Per hour	\$20.00	M	Y	\$20.50
LC.9.8	Crèche Hire	Per hour	\$50.00	M	Y	\$51.50
LC.9.9	Aerobics room hire	Per hour	\$50.00	M	Y	\$51.50
LC.9.10	Lane Hire					
LC.9.11	Lane hire 25m	Per hour	\$35.00	M	Y	\$36.00
LC.9.12	Lane hire 50m	Per hour	\$35.00	M	Y	\$36.00
LC.10	Learn to Swim Lessons	Personal Aquatic Survival Skills				
LC.10.1	Infants		\$11.00	M	F	\$11.00
LC.10.2	Pre School and School Age		\$13.00	M	F	\$13.00
LC.10.3	Private Swimming Lesson	30 minutes	\$45.00	M	F	\$45.00
LC.10.4	School lesson Swim		\$6.50	M	F	\$6.50
LC.10.5	Holiday Program	5 lessons a week	\$65.00	M	F	\$65.00
LC.11	Squad	Incl. Swimwest squad participants Swimwest to provide coaching				
LC.11.1	Gold/Silver Squad Swim Pass	3 monthly pass	\$225.00	M	Y	\$235.00
LC.11.2	Gold/Silver Squad Swim Pass	Direct debit per fortnight	\$35.00	M	Y	\$36.50
LC.11.3	Bronze Squad Swim Pass	3 monthly pass	\$195.00	M	Y	\$205.00
LC.11.4	Bronze Squad Swim Pass	Direct debit per fortnight	\$30.00	M	Y	\$31.50
LC.11.5	Shark Squad Swim Pass	3 monthly pass	\$180.00	M	Y	\$190.00
LC.11.6	Shark Squad Swim Pass	Direct debit per fortnight	\$28.00	M	Y	\$29.50
LC.11.7	Dolphin Squad Swim Pass	3 monthly pass	\$130.00	M	Y	\$136.00
LC.11.8	Dolphin Squad Swim Pass	Direct debit per fortnight	\$20.00	M	Y	\$21.00
LC.11.9	Casual Squads		\$9.50	M	Y	\$10.00
LC.12	Pool Membership	Includes spa and sauna				
LC.12.1	12 Months		\$480.00	M	Y	\$495.00
LC.12.2	Single	Per fortnight, by direct debit	\$18.50	M	Y	\$19.00
LC.12.3	Family	Per fortnight, by direct debit	\$61.50	M	Y	\$63.00
HEALTH AND FITNESS MEMBERSHIP						
LC.13	Membership					
LC.13.1	12 months - New		\$850.00	M	Y	\$875.00
LC.13.2	12 months Renewal	Paid in full	\$745.00	M	Y	\$765.00
LC.13.3	12 months - Off Peak		\$635.00	M	Y	\$655.00
LC.13.4	Easy pay - Peak	Per fortnight, by direct debit	\$36.00	M	Y	\$37.00
LC.13.5	Easy Pay - Off Peak	Per fortnight, by direct debit	\$26.00	M	Y	\$27.00
LC.13.6	Family membership	Per fortnight, by direct debit	\$75.00	M	Y	\$77.00
LC.13.7	PrYme Adults - per fortnight		\$19.00	M	Y	\$19.50

Index	Fee Description	Conditions	2013/2014 Fees	Pricing Policy	GST	2014/2015 Fees
LC.13.8	PrYme Adults - per 6 months		\$230.00	M	Y	\$235.00
LC.13.9	Joining Fee		\$79.00	M	Y	\$79.00
LC.13.10	Rehabilitation - 2 months		\$220.00	M	Y	\$225.00
LC.13.11	Rehabilitation - 3 months		\$330.00	M	Y	\$340.00
LC.13.12	Corporate membership		\$645.00	M	Y	\$665.00
LC.13.13	Corporate membership (fortnight by direct debit)		\$26.00	M	Y	\$27.00
LC.13.14	Aqua-aerobics		\$11.00	M	Y	\$11.00
LC.13.15	Teen Gym Membership	Per fortnight	\$16.00	M	Y	\$16.50
LC.13.16	Teen Gym Casual		\$10.00	M	Y	\$10.00
LC.13.17	Buddy Membership	Per fortnight	\$20.00	M	Y	\$20.50
LC.13.18	Personal Training - Half Hour		\$40.00	M	Y	\$40.00
LC.13.19	Personal training - Per Hour		\$55.00	M	Y	\$56.50
LC.13.20	Personal training - Per Hour (direct debit)		\$50.00	M	Y	\$50.00
LC.13.21	Personal training - 10 visit pack	Hourly sessions	\$500.00	M	Y	\$500.00
LC.13.22	Personal training 3 Visits	Half hour	\$99.00	M	Y	\$99.00
LC.14	Casual					
LC.14.1	Casual gym	Includes swim	\$18.00	M	Y	\$18.00
LC.14.2	Casual aerobics	Includes swim	\$18.00	M	Y	\$18.00
LC.14.3	After class gym		\$7.00	M	Y	\$7.00
LC.15	Crèche					
LC.15.1	Crèche (member)	Per hour	Free	N		Free
LC.15.2	Crèche (non-member)	Per hour	\$4.00	M	Y	\$4.10
LC.15.3	Multi-Visit Pass	40 visits	\$80.00	M	Y	\$82.00
INDOOR STADIUM						
LC.16	Sports Hall Hire Standard					
LC.16.1	Commercial Competition Hire		\$71.00	M	Y	\$73.00
LC.16.2	Not for Profit Competition Hire Senior (HDBA)		\$46.00	M	Y	\$50.00
LC.16.3	General Hire - Peak		\$50.00	M	Y	\$51.50
LC.16.4	General Hire - Off Peak		\$42.00	M	Y	\$43.50
LC.17	Badminton/Tennis					
LC.17.1	Badminton	Per hour, per court	\$15.00*	M	Y	\$15.50
LC.17.2	Tennis	Per hour, per court	\$11.00*	M	Y	\$11.50
LC.18	Casual user		\$3.00	M	Y	\$3.00
LC.19	Team Sports					
LC.19.1	Adults	Per game	\$55.00	M	Y	\$56.00
LC.19.2	Junior/Daytime	Per game	\$40.00	M	Y	\$41.00
LC.19.3	School use (9am - 5pm)					
LC.19.4	Per Court		\$37.00	M	Y	\$38.00
LC.19.5	Per Child/no instructor		\$5.00	M	Y	\$5.10
LC.19.6	Meeting Room	Per hour	\$30.00	M	Y	\$30.00
LC.19.7	Crèche	Per hour	\$3.50	M	Y	\$3.60
LC.19.8	Sports Membership Registration	Per person, per competition	\$14.00*	M	Y	\$15.00

Index	Fee Description	Conditions	2013/2014 Fees	Pricing Policy	GST	2014/2015 Fees
KIDZ MOVES						
LC.20	Kindergym	Per term	\$120.00	M	Y	\$124.00
LC.21	Recreational Gym	Per term	\$120.00	M	Y	\$124.00
LC.22	Learn-to-play	Per term	\$90.00	M	Y	\$93.00
VACATION CARE						
LC.23	Day camp	Per day	\$46.00	M	Y	\$46.00
LC.24	Day camp - plus clinic	Per day	\$60.00	M	Y	\$60.00
LC.25	Day camp - plus excursion	Per day	\$60.00	M	Y	\$60.00
PARKS AND RECREATION – RECREATION						
PARK BOOKINGS						
PR.1	Non-Exclusive use events					
PR.1.1	Administration/Booking Fee					
PR.1.2	Events in Parks	Included but not limited to the following activities: Weddings, Events, Parties, Large gatherings, Markets or Activities involving temporary structures				
PR.1.3	Small to Medium Events	Up to 200 people Excluding War Memorial Events	\$56.00	P	Y	
PR.1.4	Large Events	Over 200 people		F	Y	
PR.1.5	Personal trainers/Boot camps	Per season Summer (September - March), Winter (April - August)	\$703.00*	F	Y	
PR.1.6	Personal trainers/Boot camps/Other Commercial users	Casual hourly rate	\$21.70	F	Y	
PR.1.7	Wedding at McQuade Park	Per hour (Maximum 2 hours) Includes Booking Fee	\$104.00*	F	Y	
PR.1.8	Refundable Bond					
PR.1.9	Sporting/Community event	Minimum Fee	\$200.00*	P	X	
PR.1.10	Corporate/Business event	Minimum Fee	\$1,000.00*	P	X	
PR.2	Exclusive use events					
PR.2.1	Administration/Booking Fee					
PR.2.2	Community organisation event (not for profit)	Where the event is no more than three consecutive days				
PR.2.3	Set up - Prior to Event	Per day	\$508.00	P	Y	
PR.2.4	Event days	Per day	\$1,017.50	P	Y	
PR.2.5	Removal/Clean up - Post Event	Per day	\$508.00	P	Y	

Index	Fee Description	Conditions	2013/2014 Fees	Pricing Policy	GST	2014/2015 Fees
PR.2.6	Corporate/Business organisation event	Where the event is no more than three consecutive days				
PR.2.7	Set up - Prior to Event	Per day	\$824.00	F	Y	\$500.00
PR.2.8	Event days	Per day	\$1,648.00	F	Y	\$1,000.00
PR.2.9	Removal/Clean up - Post Event	Per day	\$824.00	F	Y	\$500.00
PR.2.10	Community/Corporate/Business organisation event	Where the event is more than three consecutive days		F	Y	POA
	Exclusive use events For areas less than 1000m2 or less than 40% of the park, a reduced fee of 50% applies					
PR.2.11	Refundable Bond					
PR.2.12	Sporting/Community event	Minimum Fee	\$200.00*	P	X	\$200.00
PR.2.13	Corporate/business event	Minimum Fee	\$1,000.00*	P	X	\$1,000.00
PR.3	Events Services					
PR.3.1	Electricity					
PR.3.2	Corporate/business organisation	Per day	\$11.00	P	Y	\$88.00
PR.3.3	Garbage Service					
PR.3.4	Delivery and Pick-up of bins					
PR.3.5	1 to 10 bins		\$150.00	F	Y	\$155.00
PR.3.6	11 to 25 bins		\$300.00	F	Y	\$310.00
PR.3.7	Emptying Fee	Per bin	\$14.00	F	Y	\$14.50
PR.3.8	Replacement bin due to vandalism or theft		\$95.00	F	Y	\$98.00
PR.3.9	Toilet cleaning	Prior to event	\$73.00	P	Y	\$75.00
PR.4	Casual Use of Parks and Reserves					
PR.4.1	Park Access					
PR.4.2	Establishment fee for use of parks as compounds by Contractors		\$240.91	F	X	\$250.00
PR.4.3	Rental per week for compound site	Per m ²	\$1.14	F	X	\$1.20
PR.4.4	Parks access administration fee		\$56.00	F	Y	\$58.00
PR.4.5	Use of Parks and Reserves by Hot Air Balloons					
PR.4.6	Annual administration booking fee		\$56.00	P	Y	\$56.00
PR.4.7	Fee per launch, landing or tether	For annual bookings	\$23.00	R	Y	\$23.00
PR.4.8	Casual hire fee	Per launch, landing or tether	\$107.00	R	Y	\$107.00
PR.4.9	Circuses/Fairs/Carnivals and other similar size events					
PR.4.10	Set up/Removal/Non-Show days	Per day	\$400.00	F	Y	\$500.00

Index	Fee Description	Conditions	2013/2014 Fees	Pricing Policy	GST	2014/2015 Fees
PR.4.11	Show days		\$800.00	F	Y	\$1,000.00
PR.4.12	Markets and Fetes (Excluding Windsor Mall)	Rate per day				
PR.4.13	Application Fee - Community			F	Y	\$100.00
PR.4.14	Application Fee - Commercial			F	Y	\$500.00
PR.4.15	Markets	Per Stall, Per day		F	Y	\$29.00
PR.4.16	Use of park to access private property for building/landscape works					
PR.4.17	Administration fee		\$50.91	P	X	\$58.00
PR.4.18	Inspection fee		\$109.91	F	X	\$113.00
PR.4.19	Refundable Bond	Minimum	\$2,000.00*	P	X	\$2,000.00
CAMPING FEES - UPPER COLO						
PR.5	Fee per person per night	Prepaid				
PR.5.1	Adult	12 - 17 years of age must be supervised by an adult 18 years and above	\$7.00	F	Y	\$8.00
PR.5.2	Children under 5 years of age		Free	N		Free
PR.5.3	Children age 5 years to 12 years		\$4.50	F	Y	\$5.00
PR.5.4	Family	2 adults and 2 children - children aged between 5 and 12 years	\$18.50	P	Y	\$21.00
PR.5.5	Booking Cancellation Fee - More than 7 days prior to arrival	50% of booking fee Or \$50.00 minimum If the amount paid is less than \$50.00, whole payment will be forfeited	POA*	P	Y	POA
PR.5.6	Booking Cancellation Fee - Within 7 days of arrival	100% of booking fee	POA*	P	Y	POA
	Campers can cancel and re-book their stay, at no additional charge, provided the booking date is within 6 months of the original reservation					
PR.6	Fee per person per night	Not Prepaid				
PR.6.1	Adult	12 - 17 years of age must be supervised by an adult 18 years and above	\$12.00	R	Y	\$15.00
PR.6.2	Children under 5 years of age		Free	N		Free
PR.6.3	Children age 5 years to 12 years		\$7.00	R	Y	\$10.00
TREE PRESERVATION						
PR.7	Street Trees					
PR.7.1	Administration fee for removal of street trees in township	On Council Land	\$194.00	R	Y	\$58.00
PR.7.2	Compensation for removal of tree on Council Land	Arising from approved development	\$375.00	F	X	\$387.00

Index	Fee Description	Conditions	2013/2014 Fees	Pricing Policy	GST	2014/2015 Fees
CEMETERY FEES						
PR.8	Richmond Lawn Cemetery/Wilberforce Cemetery/Pitt Town Cemetery					
PR.8.1	Plot Fees					
PR.8.2	Burial Plot	Includes perpetual maintenance	\$1,070.00	F	Y	\$1,800.00
PR.8.3	Administration Fee	When paying by instalments	\$104.00	F	Y	\$104.00
PR.8.4	Surcharge for Non-Residents (new sites)				Y	\$1,000.00
PR.8.5	First interment		\$909.00	F	Y	\$1,000.00
PR.8.6	Second interment		\$909.00	F	Y	\$940.00
PR.8.7	Fixing in concrete of inscribed stainless steel plaque		\$343.00	F	Y	\$343.00
PR.8.8	Additional inscription on existing plaque		\$182.00	F	Y	\$182.00
PR.8.9	Associated Fees					
PR.8.10	Interments after 2.30pm on weekdays		\$229.00	F	Y	\$235.00
PR.8.11	Interments on weekends/public holidays		\$535.00	F	Y	\$550.00
PR.8.12	Administration fee for relinquishing/reversing purchase of cemetery plots/niches	10% of plot cost	POA	F	Y	POA
PR.8.13	Placement of War Office plaque at Richmond Lawn Cemetery		\$56.00	F	Y	\$120.00
PR.8.14	Columbarium Walls/Rose Garden/Magnolia Garden/Burial Plots					
PR.8.15	Niche in Columbarium, Magnolia Garden, Rose Garden or Burial Plot	Maximum of 2 ashes in a burial plot	\$465.00	F	Y	\$480.00
PR.8.16	Ashes placed in coffin	Per Urn Maximum of 2 ashes in a burial plot	\$228.00	F	Y	\$235.00
PR.8.17	First Interment in the Magnolia Garden		\$230.00	F	Y	\$235.00
PR.8.18	Second Interment in the Magnolia Garden		\$172.00	F	Y	\$180.00
PR.8.19	Bronze plaque on sandstone base	Maximum 8 lines	\$354.00*	F	Y	\$365.00
PR.8.20	Laser cut steel plaque on sandstone base	Maximum 8 lines	\$233.00*	F	Y	\$240.00
PR.8.21	Insignias		POA	F	Y	POA
PR.9	Lower Portland Cemetery					
PR.9.1	Plot Fees					
PR.9.2	Single Plot		\$750.00	E	Y	\$750.00
PR.9.3	Single Niche		\$450.00	E	Y	\$450.00

Index	Fee Description	Conditions	2013/2014 Fees	Pricing Policy	GST	2014/2015 Fees
PR.9.4	Interment Fees					
PR.9.5	Interment Fee		\$65.00	E	Y	\$65.00
PR.10	St Albans Cemetery					
PR.10.1	Plot Fees					
PR.10.2	Single Plot - Resident		POA	E	Y	POA
PR.10.3	Single Plot - Non Resident		\$3,000.00	E	Y	\$3,000.00
PR.10.4	Interment Fees					
PR.10.5	Interment - Resident		POA	E	Y	POA
PR.10.6	Interment - Non Resident		\$1,000.00	E	Y	\$1,000.00
MISCELLANEOUS						
PR.11	Professional and Administration Fees					
PR.11.1	Staff technical/professional project services-General Manager, Directors, Managers	Per hour or part thereof (Min \$150.00)	\$125.00*	M	Y	\$150.00
PR.11.2	Staff technical/professional project services-General	Per hour or part thereof (Min \$100.00)	\$95.00*	M	Y	\$100.00
PR.11.3	Staff technical/professional project services-Administrative/Clerical	Per hour or part thereof (min \$75.00)	\$65.00*	M	Y	\$75.00
PR.12	Banners					
PR.12.1	Application Fee	Covers a period of two weeks	\$17.15	P	Y	\$18.00
PR.12.2	Removal of overdue banner		\$118.00	F	Y	\$122.00
PR.12.3	Refundable key bond		\$30.00	P	X	\$30.00
PR.12.4	Late return of key		\$10.91	P	X	\$12.00
PR.13	Community Nursery					
PR.13.1	Hyco cells					
PR.13.2	1 to 40	Each	\$1.10	P	Y	\$1.10
PR.13.3	41 or more	Each	\$1.00	P	Y	\$1.00
PR.13.4	Tubestock					
PR.13.5	Tubestock - Approx. 50mm x 50mm x 120mm 1 to 20	Each	\$2.20	P	Y	\$2.20
PR.13.6	Tubestock - Approx. 50mm x 50mm x 120mm 21 or more	Each	\$1.65	P	Y	\$1.65
PR.13.7	Super Tube - Approx. 65mm x 65mm x 160mm		\$2.75	P	Y	\$2.75
PR.13.8	Long stem- Approx. 50mm x 50mm x 120mm		\$2.75	P	Y	\$2.75
PR.13.9	2" Pot - 1 to 20	Each	\$1.10	P	Y	\$1.10
PR.13.10	2" Pot - 21 or more	Each	\$1.00	P	Y	\$1.00
PR.13.11	6" Pot		\$6.60	P	Y	\$6.60
PR.13.12	Tray Deposits		\$3.00	P	X	\$3.30
PR.13.13	Grow cells					
PR.13.14	Small grow cells - Approx. 20mm x 20mm x 20mm	Each	\$0.25	P	Y	\$0.25
PR.13.15	Large grow cells - Approx. 30mm x 30mm x 30mm	Each	\$0.45	P	Y	\$0.45

Index	Fee Description	Conditions	2013/2014 Fees	Pricing Policy	GST	2014/2015 Fees
PR.13.16	Planting Accessories					
PR.13.17	Bamboo canes 11-13mm x 750mm	Each	\$0.35	F	Y	\$0.35
PR.13.18	Frost bag tree sleeves 450mm x 350mm	Each	\$0.60	F	Y	\$0.55
PR.13.19	Delivery for plants or planting accessories	Price per courier Plus 10% administration fee	POA*	F	Y	POA
PR.14	Film and Television					
PR.14.1	Filming Application	Fees on application as per Local Government Filming Protocol Education facilities/students are exempt	POA	E	X	POA
PR.14.2	Filming Inspection	Fees on application as per Local Government Filming Protocol	POA	E	X	POA
PR.15	Opening of Gates	After hours				
PR.15.1	Minimum charge	Cost of staff/contractors to open the gates	\$130.00	F	Y	\$130.00
PR.16	Sale of Tender Documents					
PR.16.1	Sale of Tender documents (printing, paper, expertise, overheads)		POA	P	Y	POA
PR.17	Stage Hire					
PR.17.1	Community Events		POA	P	Y	\$350.00
PR.17.2	Private/Business Events		\$160.00*	F	Y	\$510.00
PR.17.3	Skate Ramp Hire		POA	F	Y	POA
PR.18	Supply of Keys					
PR.18.1	Supply of keys to Community Groups and Sports Bodies		\$25.00	F	Y	\$25.00
PR.18.2	Bond - Refundable deposit for keys on loan		\$30.00	P	X	\$30.00
RICHMOND POOL						
PR.19	Admission Charges					
PR.19.1	Adults		\$4.20	P	Y	\$4.30
PR.19.2	Pensioners, seniors, children and students		\$3.10	P	Y	\$3.20
PR.19.4	Accompanying parents/carers		\$1.00	P	Y	\$1.00
PR.19.5	School Accredited Learn to Swim Programs		\$1.90	P	Y	\$1.95
PR.19.6	Family - 2 adults and 3 children	Additional children incur entry charge	\$14.60	P	Y	\$15.00
PR.19.7	Exclusive use of the pool - Half day	On approval	POA	P	Y	POA
PR.19.8	Exclusive use of the pool - Full day	On approval	POA	P	Y	POA
PR.20	Entry Card	20 passes				
PR.20.1	Adult		\$58.80	P	Y	\$60.20
PR.20.2	Child/Concession		\$43.40	P	Y	\$44.80

Index	Fee Description	Conditions	2013/2014 Fees	Pricing Policy	GST	2014/2015 Fees
PR.21	Carnivals	Including school carnivals				
PR.21.1	Half Day Carnival		\$160.00	P	Y	\$165.00
PR.21.2	Full Day Carnival		\$240.00	P	Y	\$245.00
PR.22	Learn to Swim					
PR.22.1	Learn to Swim class					
PR.22.2	Learn to Swim class	Per person	\$10.00	P	F	\$10.30
PR.22.3	Private Learn to Swim Lesson		\$30.00	P	F	\$30.90
PR.22.4	Family Learn to Swim class	When full school term or full 2 week intensive program (minimum 9) are purchased, the 2nd child and subsequent children in the family receive \$10.00 off the full term/intensive fee	POA	P	F	POA
PR.22.5	Lane Hire		\$15.00	P	Y	\$15.00
PR.23	Season pass					
PR.23.1	Adult		\$235.00	P	Y	\$240.00
PR.23.2	Child		\$165.00	P	Y	\$170.00
PR.23.3	School survival class school class	Per child (Minimum 50 children)	\$7.00*	P	Y	\$7.50
PR.24	Squad Training					
PR.24.1	Casual visit		\$9.90	P	Y	\$10.20
PR.25	Birthday Parties/Functions					
PR.25.1	Minimum 10 children	Per person	\$17.00	P	Y	\$17.50
PR.25.2	Hire of Club Room		POA	P	Y	POA
TENNIS COURT HIRE						
PR.26	Non-Commercial Hire for the following tennis courts					
PR.26.1	Bligh Park					
PR.26.2	Day Hire	Per hour	\$6.00	P	Y	\$6.00
PR.26.3	Night Hire	Per hour	\$9.00	P	Y	\$9.00
PR.26.4	Blaxland's Ridge					
PR.26.5	Day Hire	Per hour	\$6.00	P	Y	\$6.00
PR.26.6	Night Hire	Per hour	\$9.00	P	Y	\$9.00
PR.26.7	Colo Heights					
PR.26.8	Day Hire	Per hour	\$6.00	P	Y	\$6.00
PR.26.9	Night Hire	Per hour	\$9.00	P	Y	\$9.00
PR.26.10	Freeman's Reach					
PR.26.11	Day Hire	Per hour	\$6.00	P	Y	\$6.00
PR.26.12	Night Hire	Per hour	\$9.00	P	Y	\$9.00
PR.26.13	Maraylya					
PR.26.14	Day Hire	Per hour	\$6.00	P	Y	\$6.00
PR.26.15	Night Hire	Per hour	\$9.00	P	Y	\$9.00
PR.26.16	Pitt Town					
PR.26.17	Day Hire	Per hour	\$6.00	P	Y	\$6.00
PR.26.18	Night Hire	Per hour	\$9.00	P	Y	\$9.00

Index	Fee Description	Conditions	2013/2014 Fees	Pricing Policy	GST	2014/2015 Fees
PR.26.19	St Albans					
PR.26.20	Day Hire	Per hour	\$6.00	P	Y	\$6.00
PR.26.21	Night Hire	Per hour	\$9.00	P	Y	\$9.00
PR.26.22	Club Members	Minimum 20 uses	POA	P	Y	POA
PR.26.23	Tennis Shed hire		POA	P	Y	POA
PR.26.24	South Windsor					
PR.26.25	Day Hire	Per hour	\$6.00	M	Y	\$6.00
PR.26.26	Night Hire	Per hour	\$9.00	M	Y	\$9.00
PR.26.27	Windsor - McQuade Park					
PR.26.28	Day Hire	Per hour	\$6.00	P	Y	\$6.00
PR.26.29	Night Hire	Per hour	\$9.00	P	Y	\$9.00
PR.26.30	Club Members	Minimum 20 uses	POA	P	Y	POA
PR.27	Commercial Hire for tennis courts	Charged at the above rates plus 25% commercial levy	POA*	P	Y	POA
BOWEN MOUNTAIN PARK HALL						
PR.28	Bowen Mountain Park Hall hire					
PR.28.1	Hire - per day		\$60.00	E	Y	\$70.00
PR.28.2	Hire - per hour	Kitchen not being used	\$20.00	E	Y	\$15.00
PR.28.3	Refundable Bond			E	X	\$100.00
WASTE MANAGEMENT - SEWER AND WASTE						
COUNCIL SEWER CATCHMENTS AREA CHARGES						
WM.1	Developers Charges S.64					
WM.1.1	Residential					
WM.1.2	Contribution for Pump Station carrier main and amplification of reticulation system	Per Lot as per adopted S64 Plan, indexed accordingly	\$4,123.83*	F	X	POA
WM.1.3	Contribution for treatment works	Per Lot as per adopted S64 Plan, indexed accordingly	\$4,123.83*	F	X	POA
WM.1.4	Industrial					
WM.1.5	Mulgrave	Per gross Ha as per Adopted S64 Plan, indexed accordingly	\$88,085*	F	X	POA
WM.1.6	Fairey Road	Per gross Ha as per Adopted S64 Plan, indexed accordingly	\$88,085*	F	X	POA
WM.1.7	Properties in serviced areas not previously subject to contribution	Per gross Ha as per Adopted S64 Plan, indexed accordingly	\$88,085*	F	X	POA
WM.1.8	Additional lots created on other services areas	Per gross Ha as per Adopted S64 Plan, indexed accordingly	\$225.20*	F	X	POA
WM.1.9	Commercial (floor area)	Per square metre as per Adopted S64 Plan, indexed accordingly	\$8.28*	F	X	POA

Index	Fee Description	Conditions	2013/2014 Fees	Pricing Policy	GST	2014/2015 Fees
WM.1.10	Residential Flat Buildings	Strata and Torrens				
WM.1.11	1 Bedroom	No charge for first residential flat Per additional flat as per Adopted S64 Plan, indexed accordingly	\$3,985.96*	F	X	POA
WM.1.12	2 Bedroom	No charge for first residential flat Per additional flat as per Adopted S64 Plan, indexed accordingly	\$5,097.78*	F	X	POA
WM.1.13	3 Bedroom	No charge for first residential flat Per additional flat as per Adopted S64 Plan, indexed accordingly	\$5,756.57*	F	X	POA
WM.1.14	Duplex/Villas (Strata/Torrens Title)	Per Duplex/Villa as per Adopted S64 Plan	\$7,751.93*	F	X	POA
WM.1.15	Examination of Plans and Specifications including inspections					
WM.1.16	Major Works	Minimum Charge \$297.67 Or Fee WM1.17, whichever is greater	POA*	F	X	POA
WM.1.17	Per linear metre	Per linear metre as per Adopted S64 Plan, indexed accordingly	\$2.31*	F	X	POA
WM.1.18	Minor Works (other than junctions)	\$237.57 Or as per Adopted S64 Plan	\$230.65*	F	X	POA
WM.1.19	Assessment for Construction Certificate		\$196.90	F	X	\$202.80
WM.1.20	Minor works	New junctions only				
WM.1.21	First		\$155.99	F	X	\$160.67
WM.1.22	Additional on same application		\$77.70	F	X	\$80.03
WM.1.23	Special Inspection		\$76.51	F	X	\$78.81
S64 PITT TOWN DEVELOPMENT AREA - SEWERAGE INFRASTRUCTURE						
WM.2	Pump station T – Pitt Town	Per additional allotment as per Adopted S64 Plan, indexed accordingly	\$2,566.97*	F	X	POA
WM.3	Rising Main T – Pitt Town to McGraths Hill	Per additional allotment as per Adopted S64 Plan, indexed accordingly	\$6,514.66*	F	X	POA
WM.4	Fernadell carrier – Pitt Town	Per additional allotment as per Adopted S64 Plan, indexed accordingly	\$1,569.94*	F	X	POA
WM.5	Blighton carrier (option 1) – Pitt Town	Per additional allotment as per Adopted S64 Plan, indexed accordingly	\$1,631.60*	F	X	POA
WM.6	Storage at T – Pitt Town	Per additional allotment as per Adopted S64 Plan, indexed accordingly	\$436.87 *	F	X	POA
WM.7	Pump Station C – Windsor	Per additional allotment as per Adopted S64 Plan, indexed accordingly	\$2,494.69*	F	X	POA

Index	Fee Description	Conditions	2013/2014 Fees	Pricing Policy	GST	2014/2015 Fees
WM.8	Rising Main C - Windsor to South Windsor	Per additional allotment as per Adopted S64 Plan, indexed accordingly	\$6,476.40*	F	X	POA
WM.9	Storage at Pump Station C - Windsor	Per additional allotment as per Adopted S64 Plan, indexed accordingly	\$673.90*	F	X	POA
WM.10	Easements for rising main from Pump Station C to South Windsor	Per additional allotment as per Adopted S64 Plan, indexed accordingly	\$344.39*	F	X	POA
WM.11	Replacement of rising main J	Per additional allotment as per Adopted S64 Plan, indexed accordingly	\$510.20*	F	X	POA
WM.12	Upgrade to South Windsor STP inlet	Per additional allotment as per Adopted S64 Plan, indexed accordingly	\$2,458.54*	F	X	POA
WM.13	Land dedication for Pump Station T at Pitt Town	Per additional allotment as per Adopted S64 Plan, indexed accordingly	\$51.02*	F	X	POA
S64 PITT TOWN DEVELOPMENT AREA - STORMWATER INFRASTRUCTURE						
WM.14	Preliminary Studies /Plans - Bona Vista and Fernadell Precincts	Per development As per Adopted Section 64 Plan, indexed accordingly	POA	R	X	POA
WM.15	Land Acquisition - Bona Vista and Fernadell Precincts	Per development As per Adopted Section 64 Plan, indexed accordingly	POA	R	X	POA
WM.16	Basin, Overland Flow Path and Wetland Construction - Bona Vista and Fernadell Precincts	Per development As per Adopted Section 64 Plan, indexed accordingly	POA	R	X	POA
TRADE WASTE DISPOSAL IN COUNCIL'S SEWERS						
WM.17	Volume discharge, conveyance and treatment					
WM.17.1	Trade Waste Excess Volume Charge	Per kilolitre	\$2.38	F	X	\$2.45
WM.18	Treatment charge only					
WM.18.1	Correctional Facility, etc.	Per kilolitre	\$1.19	F	X	\$1.23
WM.19	Mass loading					
WM.19.1	Biochemical Oxygen Demand (BOD)					
WM.19.2	Biochemical Oxygen Demand - Up to 100%	Per kilogram	\$2.62	F	X	\$2.70
WM.19.3	Biochemical Oxygen Demand - Over 100%	Per kilogram	\$5.25	F	X	\$5.41
WM.19.4	Suspended solids					
WM.19.5	Suspended solids - Up to 100%	Per kilogram	\$2.28	F	X	\$2.35
WM.19.6	Suspended solids - Over 100%	Per kilogram	\$4.57	F	X	\$4.71

Index	Fee Description	Conditions	2013/2014 Fees	Pricing Policy	GST	2014/2015 Fees
WM.19.7	Total grease and oil (G&O)					
WM.19.8	Total grease and oil (G&O) - Up to 100%	Per kilogram	\$3.21	F	X	\$3.31
WM.19.9	Total grease and oil (G&O) - Over 100%	Per kilogram	\$6.43	F	X	\$6.62
WM.19.10	Schedule A Charge Groups (mass)					
WM.19.11	Group 1 - 100% standard	Per kilogram	\$2.99	F	X	\$3.08
WM.19.12	Group 1 - Over 100%	Per kilogram	\$5.97	F	X	\$6.15
WM.19.13	Group 2 - 100% standard	Per kilogram	\$60.17	F	X	\$61.98
WM.19.14	Group 2 - Over 100%	Per kilogram	\$120.34	F	X	\$123.95
WM.19.15	Group 3 - 100% standard	Per kilogram	\$150.63	F	X	\$155.15
WM.19.16	Group 3 - Over 100%	Per kilogram	\$301.26	F	X	\$310.30
WM.19.17	Group 4 - 100% standard	Per kilogram	\$301.26	F	X	\$310.30
WM.19.18	Group 4 - Over 100%	Per kilogram	\$602.65	F	X	\$620.73
WM.20	Chemical analysis					
WM.20.1	Reimbursement to Council		POA	F	X	POA
WM.20.2	Sampling Fee		\$106.40	F	X	\$109.59
WM.21	Trade waste application		\$245.85	F	X	\$253.23
WM.22	Inspection fee		\$82.04	F	X	\$84.50
WM.23	Trade Waste Permission Renewal		\$61.87	F	X	\$63.73
WM.24	Trade Waste Formal Agreement Preparation		\$327.03	F	X	\$336.84
SEWERAGE						
WM.25	Junction Sheets		\$17.42	F	X	\$17.94
SALES						
WM.26	Hay bales	Prices variable - dependent on quality	POA	R	Y	POA
WM.27	Sale of Tender documents (printing, paper, expertise, overheads)		POA	F	Y	POA
WASTE MANAGEMENT FACILITY						
WM.28	Waste Disposal Tipping Fees					
WM.28.1	Recycling Centre Materials	Kerbside type materials	Free	N		Free
WM.28.2	Mattresses					
WM.28.3	Mattresses - Other		\$23.90	F	Y	\$25.00
WM.28.4	Mattresses - Double or larger		\$29.50	F	Y	\$30.00
WM.28.5	White Goods (Metal)		Free	N		Free
WM.28.6	Predominately metal items	Including car bodies and parts (excluding separate LPG gas tanks)	Free	N		Free
WM.28.7	Tyres					
WM.28.8	Tyres - Tyres on Rim	No heavy vehicle	\$9.90	F	Y	\$10.00
WM.28.9	Tyres - Tyres de-rimmed	No heavy vehicle	\$6.60	F	Y	\$7.00
WM.28.10	Truck		\$13.20	F	Y	\$13.60
WM.28.11	Super Single		\$39.59	F	Y	\$40.78

Index	Fee Description	Conditions	2013/2014 Fees	Pricing Policy	GST	2014/2015 Fees
WM.28.12	Tractor - Small up to 1m high		\$82.34	F	Y	\$84.81
WM.28.13	Tractor - Large 1m to 2m high		\$140.44	F	Y	\$144.65
WM.28.14	Grader		\$91.97	F	Y	\$94.73
WM.28.15	Earthmoving - Small up to 1m high		\$114.84	F	Y	\$118.29
WM.28.16	Earthmoving - Medium 1m to 1.5m high		\$224.48	F	Y	\$231.21
WM.28.17	Earthmoving - Large greater than 1.5m high		\$435.20	F	Y	\$448.26
WM.28.18	Difficult to handle or special waste					
WM.28.19	Base charge - Waste requiring separate/supervised burial, including security burials and commercial large animals	Plus Fee WM.28.20		F	Y	\$50.00
WM.28.20	Waste requiring separate/supervised burial, including security burials and commercial large animals	Only accepted with 24hrs prior booking with gate house Per tonne (Minimum \$120.00)	\$279.03*	F	Y	\$297.00
WM.28.21	Load containing Expanded plastic (e.g. polystyrene) and Synthetic Mineral fibre (e.g. insulation) when load is					
WM.28.22	Base charge - Load containing Expanded plastic (e.g. polystyrene) and Synthetic Mineral fibre (e.g. insulation)	Plus Fee WM.28.23		F	Y	\$175.00
WM.28.23	Load containing Expanded plastic (e.g. polystyrene) and Synthetic Mineral fibre (e.g. insulation)	Per tonne	\$415.46*	F	Y	\$438.00
WM.28.24	Mixed loads containing NO recyclable materials					
WM.28.25	Waste loads less than or equal to 20kg	Flat rate	\$10.00	F	Y	\$10.00
WM.28.26	Base charge - Waste loads more than 20kg	Plus Fee WM.28.27	\$10.00*	F	Y	\$10.00
WM.28.27	Waste loads more than 20kg (tonnage rate per tonne)	Per tonne (pro rata)	\$216.70	F	Y	\$233.00
WM.28.28	Mixed loads containing recyclable materials					
WM.28.29	Waste loads less than or equal to 20kg	Flat rate	\$44.66	F	Y	\$53.00
WM.28.30	Base charge - Waste loads more than 20kg	Plus Fee WM.28.31		F	Y	\$46.00
WM.28.31	Waste loads more than 20kg	Per tonne (pro rata)	\$44.66*	F	Y	\$362.00
WM.28.32	Other materials					
WM.28.33	Small animals - cat , dog, sheep , goat etc. <60kg	Per animal	\$19.24	F	Y	\$26.00

Index	Fee Description	Conditions	2013/2014 Fees	Pricing Policy	GST	2014/2015 Fees
WM.28.34	Base charge - Large animals - horse, alpaca, cow etc. >60kg	Plus Fee WM.28.35	\$27.41	F	Y	\$32.00
WM.28.35	Large animals - horse, alpaca, cow etc.	Per tonne	\$254.33	F	Y	\$272.00
WM.28.36	Plastic containers	Per Item Excl. DrumMuster and Australian Institute of Petroleum Scheme containers		F	Y	\$1.00
WM.28.37	Televisions and Computers	Per Item Product Stewardship Scheme items only		P	Y	\$12.00
WM.28.38	Building/Construction/Demolition/Renovation wastes	Separated and deposited to correct locations				
WM.28.39	Waste loads less than or equal to 20kg	Flat rate	\$10.00	F	Y	\$10.00
WM.28.40	Base charge - Waste loads more than 20kg	Plus Fee WM.28.41	\$10.00*	F	Y	\$10.00
WM.28.41	Waste loads more than 20kg (tonnage rate per tonne)	Per tonne	\$361.36	F	Y	\$382.00
WM.28.42	Separated bricks, concrete, terracotta pipes and tiles up to 100kg	Minimum charge (Delivered as separate loads only)	\$10.00	F	Y	\$14.00
WM.28.43	Separated bricks, concrete, terracotta pipes and tiles	Per tonne (Delivered as separate loads only)	\$67.15	F	Y	\$139.00
WM.28.44	Separated 100% vegetation loads free of any contamination	Excludes palm trees and fronds, bamboo, weeds and non-mulchable garden organics which are charged as per Fee WM.28.24				
WM.28.45	Waste loads less than or equal to 20kg	Flat rate	\$10.00	F	Y	\$10.00
WM.28.46	Base charge – Waste loads more than 20kg	Plus Fee WM.28.47 or Fee WM.28.48	\$10.00	F	Y	\$10.00
WM.28.47	Less than 300mm diameter	Per tonne (Minimum charge \$10.00)	\$105.85*	F	Y	\$128.00
WM.28.48	300mm diameter or greater (includes tree trunks, stumps and root balls)	Per tonne (Minimum charge \$10.00)	\$157.59*	F	Y	\$162.00
WM.28.49	9kg LPG bottles or smaller		\$5.00	F	Y	\$8.00
WM.28.50	Replacement of lost weighbridge card by the public		\$22.50	F	Y	\$23.00
WM.28.51	Reloading fee	For any misrepresented or unacceptable loads that require reloading for removal from the site	\$165.72	F	Y	\$170.00
All above prices that include the Section 88 Waste Levy will be reduced by the Levy amount, where exemption from the Levy has been granted by the Department of Environment and Climate Change						

Index	Fee Description	Conditions	2013/2014 Fees	Pricing Policy	GST	2014/2015 Fees
WASTE MANAGEMENT SALES						
WM.29	Sale of Goods					
WM.29.1	Mulch	Per tonne loaded Maximum	\$5.00	F	Y	\$7.00
WM.29.2	Fire wood / timber	Per tonne (when available)	POA	M	Y	POA
WM.29.3	Metal	Per tonne	POA	M	Y	POA
WM.29.4	Crushed concrete, brick and tile	When available	POA	M	Y	POA
WM.29.5	Soil	When available	POA	M	Y	POA
WM.29.6	Other miscellaneous items		POA	M	Y	POA
WM.29.7	Sand	Per tonne loaded (Maximum) when available	\$5.50	M	Y	\$15.00
NON-POTABLE WATER SALES						
WM.30	Sale of recycled water	Per kilolitre 75% of Sydney Water Potable Water Charge	POA*	P	F	POA
CORPORATE SERVICES AND GOVERNANCE						
GENERAL						
CG.1	Photocopies					
CG.1.1	Black and white - A4	Per copy	\$0.60	P	Y	\$0.60
CG.1.2	Black and white - A3	Per copy	\$1.20	P	Y	\$1.20
CG.2	Courier Fees		POA	F	Y	POA
CG.3	Road Closure Application Fee					
CG.3.1	Road vesting in Council		\$930.00	F	Y	\$955.00
CG.3.2	Unformed Council Public Road		\$1,550.00	F	Y	\$1,600.00
CG.4	Sale of Council Land - Road - Bond		\$5,670.00	F	X	\$5,840.00
CG.5	Leasing of Roads					
CG.5.1	Application for Lease - Road		\$843.55	F	X	\$870.00
CG.5.2	Lease of Road - Bond		\$2,750.00	F	X	\$2,830.00
CG.6	Australian Pioneer Village					
CG.6.1	Filming or use of	To be negotiated with Lessee	POA*	E	Y	POA
ACCESS TO INFORMATION						
CG.7	Government Information (Public Access) Act	The application fee counts as payment towards any processing charge payable				
CG.7.1	Access to records by natural persons regarding their personal information					
CG.7.1	Application Fee		\$30.00	S	X	\$30.00
CG.7.2	Processing Charge	Per hour after the first 20 hours	\$30.00*	S	X	\$30.00
CG.7.3	Financial hardship and/or special public benefit reasons	50% of charges	POA*	S	X	POA

Index	Fee Description	Conditions	2013/2014 Fees	Pricing Policy	GST	2014/2015 Fees
CG.8	All other requests					
CG.8.1	Application fee		\$30.00	S	X	\$30.00
CG.8.2	Processing Charge	Per hour	\$30.00	S	X	\$30.00
CG.8.3	Financial hardship and/ special public benefit reasons	50% of charges	POA*	S	X	POA
CG.9	Internal Review (all circumstances)	Application Fee	\$40.00	S	X	\$40.00
CG.10	Informal Access to Information under GIPA Act					
CG.10.1	Inspections of documents		Free	S		Free
CG.10.2	Provision of photocopies	Per copy				
CG.10.3	Black and white - A4	Per copy	\$0.60	S	X	\$0.60
CG.10.4	Black and white - A3	Per copy	\$1.20	S	X	\$1.20
CG.10.5	Colour - A4	Per copy	\$1.60	S	X	\$1.60
CG.10.6	Colour - A3	Per copy	\$3.20	S	X	\$3.20
CG.10.7	Provision of Recordings and/or CDs	Each				
CG.10.8	Supply of CD		\$40.00	S	X	\$40.00
CG.10.9	Processing Charge if applicable	Per hour	\$30.00	S	X	\$30.00
WINDSOR MALL FEES						
	Bond amount of \$1,000 is required or as otherwise determined by nominated Council Officer					
CG.11	Banners					
CG.11.1	Application fee		\$100.00	F	X	\$100.00
CG.11.2	Charge for Overdue Banner	One-off payment	\$100.00	F	X	\$100.00
CG.12	Busking					
CG.12.1	Adult	4 hours	\$20.00	F	X	\$20.00
CG.12.2	Child (under 18 years)	4 hours	\$10.00	F	X	\$10.00
CG.13	Display and Promotions					
CG.13.1	For Profit Organisations					
CG.13.2	Owners/Shopkeepers in the mall		\$200.00	F	X	\$200.00
CG.13.3	Owners/Shopkeepers in the LGA		\$350.00	F	X	\$350.00
CG.13.4	Owners/Shopkeepers - Other		\$500.00	F	X	\$500.00
CG.13.5	For Non Profit Organisations		Free	N		Free
CG.14	Entertainment and Events					
CG.14.1	Application Fee	Including 1 day Plus Fee CG.14.2	\$500.00*	F	X	\$500.00
CG.14.2	Fee for each subsequent day		\$500.00	F	X	\$500.00
CG.15	Fundraising					
CG.15.1	Application Fee	For Non Profit Organisations	Free	N		Free
CG.16	Retail					
CG.16.1	Wagons	By licence and market evaluation	POA	M	Y	POA

Index	Fee Description	Conditions	2013/2014 Fees	Pricing Policy	GST	2014/2015 Fees
CG.16.2	Other					
CG.16.3	Owners/Shopkeepers in the Mall		\$200.00	M	Y	\$200.00
CG.16.4	Owners/Shopkeepers in the LGA		\$350.00	M	Y	\$350.00
CG.16.5	Owners/Shopkeepers - Other		\$500.00	M	Y	\$500.00
CG.17	Markets					
CG.17.1	Windsor Mall Markets					
CG.17.2	Application Fee	Plus Fee CG.17.3	\$100.00*	F	Y	\$100.00
CG.17.3	Charge per stall	Per day	\$27.00	M	Y	\$29.00
CG.18	Outdoor Dining and Footpath Trading - In Windsor Mall	Excludes the use of the Use/Licensing of areas where specific facilities have been provided				
CG.18.1	Application Fee	Plus Fee CG.18.2	\$130.00*	F	X	\$130.00
CG.18.2	Annual fee	Per m ²	\$86.37	M	X	\$86.37
CG.18.3	Approval Variation Fee		\$65.00	F	X	\$65.00
CG.19	Public Research					
CG.19.1	For Profit including promotions organisations					
CG.19.2	Application Fee		\$45.45	F	X	\$45.45
CG.19.3	For Non Profit organisations					
CG.19.4	Application Fee		Free	N	X	Free
CG.20	Raffles or Lotteries					
CG.20.1	For Profit, including promotions, organisations					
CG.20.2	Application Fee		\$68.18	F	X	\$68.18
CG.20.3	For Non Profit Organisations					
CG.20.4	Application Fee		Free	N	X	Free
CG.21	Windsor Mall Rotunda					
CG.21.1	For Profit, including promotions, organisations					
CG.21.2	Application Fee	Including 1 day Plus Fee CG.21.3	\$127.27*	F	X	\$127.27
CG.21.3	Fee for each subsequent day	Per day	\$140.00	F	Y	\$140.00
CG.21.4	For Non Profit Organisations					
CG.21.5	Application Fee		Free	N		Free
FOOTPATH USAGE						
CG.22	Outdoor Dining and Footpath Trading					
CG.22.1	Fee on application		\$130.00	F	X	\$130.00
CG.22.2	Approval Variation fee		\$65.00	F	X	\$65.00

Index	Fee Description	Conditions	2013/2014 Fees	Pricing Policy	GST	2014/2015 Fees
CG.22.3	Annual Fee for occupation of footpath	Charge per m² Per annum				
CG.22.4	Thompson Square and Windsor Mall environs	With the exclusion of the use/licensing of areas where specific facilities have been provided by Council, Per m ²	\$95.00	M	X	\$95.00
CG.22.5	Elsewhere in Windsor, Richmond and North Richmond	Per m ²	\$75.00	M	X	\$75.00
CG.22.6	Elsewhere in the city	Per m ²	\$55.00	M	X	\$55.00
PRINTING AND SIGNWRITING FEES						
CG.23	Printing and Signwriting	External Organisations				
CG.23.1	Materials and machines costs	Plus wages costs, Plus up to 40% overheads fee	POA*	F	Y	POA
CG.23.2	Photocopies					
CG.23.3	Black and white - A4	Per copy	\$0.60	F	Y	\$0.60
CG.23.4	Black and white - A3	Per copy	\$1.20	F	Y	\$1.20
CG.23.5	Colour - A4	Per copy	\$1.60	F	Y	\$1.60
CG.23.6	Colour - A3	Per copy	\$3.20	F	Y	\$3.20
CG.23.7	Banners	External Organisations				
CG.23.8	Supply of completed banner	Per linear metre	\$100.00	P	Y	\$103.00
SALE OF DOCUMENTS						
CG.24	Operational Plan and Delivery Program					
CG.24.1	Internet		Free	N		Free
CG.24.2	Hard Copy - 2 part document		\$75.00	P	X	\$75.00
CG.24.3	Hard Copy - Per individual part		\$40.00	P	X	\$40.00
CG.25	Annual Report					
CG.25.1	Full report	Annual Report, State of the Environment Report and Financial Statements				
CG.25.2	Internet		Free	N		Free
CG.25.3	Hard copy	3 part document	\$46.00	F	X	\$46.00
CG.25.4	Annual Report only					
CG.25.5	Internet		Free	N		Free
CG.25.6	Hard copy (1 part document)	1 part document	\$22.00	F	X	\$22.00
CG.26	State of the Environment Report only					
CG.26.1	Internet		Free	N		Free
CG.26.2	Hard copy	1 part document	\$22.00	F	X	\$22.00
CG.27	Financial Statements only					
CG.27.1	Internet		Free	N		Free
CG.27.2	Hard copy	1 part document	\$12.50	F	X	\$12.50
CG.28	Minute Book					
CG.28.1	Copies of Minute Book	Per page	\$250.00	F	X	\$250.00

Index	Fee Description	Conditions	2013/2014 Fees	Pricing Policy	GST	2014/2015 Fees
CG.28.2	Postage and packaging		POA	F	Y	POA
CG.29	Council Meeting Business Paper					
CG.29.1	Internet		Free	N		Free
CG.29.2	Sale of Council Meeting Business Paper	Per annum	\$600.00	F	X	\$620.00
CG.29.3	Postage and packaging		POA	F	Y	POA
CG.30	Sale of Tender Documents					
CG.30.1	Sale of Tender documents	At cost Printing, paper, expertise, overheads	POA	F	Y	POA
SUBPOENAS						
CG.31	Photocopies					
CG.31.1	Black and white - A4	Per copy	\$0.60	F	X	\$0.60
CG.31.2	Black and white - A3	Per copy	\$1.20	F	X	\$1.20
CG.31.3	Colour - A4	Per copy	\$1.60	F	X	\$1.60
CG.31.4	Colour - A3	Per copy	\$3.20	F	X	\$3.20
CG.31.5	Provision of Tapes and/or Discs	Each	\$40.00	F	X	\$40.00
CG.31.6	Documents sent electronically	Charged at 50% of the applicable rates shown in Fees CG.35.1 to CG.35.5	POA *	F	X	POA
CG.32	Subpoenas served on council					
CG.32.1	Application Fee for Subpoenas		\$70.00	F	X	\$72.00
CG.32.2	Additional charge for Subpoenas served under seven days		\$130.00	F	X	\$134.00
CG.32.3	Processing charge after the 1st hour	1st hour free Per hour or part thereof	\$77.00 *	F	X	\$79.00
CULTURAL SERVICES - GALLERY AND MUSEUM						
REGIONAL GALLERY						
GM.1	Professional and Administration Fees					
GM.1.1	Staff technical/professional project services-General Manager, Directors, Managers	Per hour or part thereof (Min \$150.00)	\$125.00 *	M	Y	\$150.00
GM.1.2	Staff technical/professional project services-General	Per hour or part thereof (Min \$100.00)	\$95.00 *	M	Y	\$100.00
GM.1.3	Staff technical/professional project services-Administrative/Clerical	Per hour or part thereof (Min \$75.00)	\$65.00 *	M	Y	\$75.00
GM.2	Membership Program					
GM.2.1	Pearl Membership	Volunteers	Free	N		Free
GM.2.2	Jets Membership	Full time students at approved institutions	\$15.00	F	Y	\$15.00
GM.2.3	Opals Membership	Ordinary members	\$25.00	F	Y	\$25.00
GM.2.4	Rubies Membership	Families with up to 2 adults and all children under 18 living at home	\$35.00	F	Y	\$35.00

Index	Fee Description	Conditions	2013/2014 Fees	Pricing Policy	GST	2014/2015 Fees
GM.2.5	Diamonds Membership	Corporate	\$500.00	F	Y	\$500.00
GM.3	Gallery Merchandise					
GM.3.1	Postcards, books, souvenirs, etc.					
GM.3.2	Range- \$0.05 to POA	Per item	POA	R	Y	POA
GM.3.3	Commission Fee on consignment stock	Range - 20% to 50% Per item		R	Y	POA
GM.3.4	Commission Fee on sale of artworks	20% Commission Per item		R	Y	POA
GM.4	Gallery Activities					
GM.4.1	Activities range in complexity, amount of consumables and other resources	May be a basic activity or an activity involving e.g. an author, artist, performer, speaker, facilitator or a guided tour				
GM.4.2	Range: free to POA	Per person	POA	P	Y	POA
GM.4.3	Range: free to POA	Per family with up to 2 adults and all children under 18 living at home Age ranges may apply to activities	POA	P	Y	POA
GM.5	Gallery Education Programs					
GM.5.1	Basic activity or activity with facilitator, activity with materials etc.					
GM.5.2	Range: free to POA	Per student	POA	P	Y	POA
GM.5.3	Range: free to POA	Per school group	POA	P	Y	POA
GM.6	Gallery Exhibitions					
GM.6.1	Entry fee for special exhibitions					
GM.6.2	Range: free to POA	Per person	POA	M	Y	POA
GM.6.3	Range: free to POA	Per family with up to 2 adults and all children under 18 living at home	POA	M	Y	POA
REGIONAL GALLERY ROOM HIRE						
GM.7	Bond	Refundable	\$200.00	P	X	\$200.00
GM.8	Gallery Room Hire	Paid staff in attendance is a requirement of hire conditions				
GM.8.1	Between 8:30am - 10pm	Per hour	\$60.00	R	Y	\$60.00
GM.8	Cleaning Fee	As per Fees GM.1.1 - GM.1.3	POA	F	Y	POA
GM.9	Breakages, loss or damage	Where applicable cost recovery for replacement or repairs of community rooms and kitchen contents or building plant and equipment	POA	F	Y	POA
GM.10	Administration, staffing, after hours staffing, security or staff call-out fee	As per Fees GM.1.1 - GM.1.3	POA	M	Y	POA

Index	Fee Description	Conditions	2013/2014 Fees	Pricing Policy	GST	2014/2015 Fees
REGIONAL MUSEUM						
GM.11	Museum Merchandise					
GM.11.1	Postcards, books, souvenirs, etc.					
GM.11.2	Range- \$0.05 to POA	Per item	POA	R	Y	POA
GM.11.3	Commission Fee on consignment stock	Range - 20% to 50% Per item		R	Y	POA
GM.12	Museum Activities					
GM.12.1	Activities range in complexity, amount of consumables and other resources	May be a basic activity or an activity involving e.g. an author, artist, performer, speaker, facilitator or a guided tour				
GM.12.2	Range: free to POA	Per person	POA	P	Y	POA
GM.12.3	Range: free to POA	Per family with up to 2 adults and all children under 18 living at home Age ranges may apply to activities	POA	P	Y	POA
GM.13	Museum Education Programs					
GM.13.1	Basic activity or activity with facilitator; activity with materials, etc.					
GM.13.2	Range: free to POA	Per student	POA	P	Y	POA
GM.13.3	Range: free to POA	Per school group	POA	P	Y	POA
GM.14	Museum Exhibitions					
GM.14.1	Entry fee for special exhibitions					
GM.14.2	Range: free to POA	Per person	POA	M	Y	POA
GM.14.3	Range: free to POA	Per family with up to 2 adults and all children under 18 living at home	POA	M	Y	POA
GM.15	Access to Former Mortuary	Paid staff is a requirement of hire conditions				
GM.15.1	Range: free to POA	Per person Plus Fees GM.1.1 - GM.1.3		F	Y	POA
GM.16	Photographs and Images					
GM.16.1	Supply of digital files of photographs or images in the Museum collection					
GM.16.2	Low resolution digital images downloaded from website	For personal use only e.g. Private research or display, reference and study purposes, presentations Image/s not used for commercial purposes or reproduction		N		Free

Index	Fee Description	Conditions	2013/2014 Fees	Pricing Policy	GST	2014/2015 Fees
GM.16.3	General purpose digital files	For personal use only e.g. Private research or display, reference and study purposes, presentations Image/s not used for commercial purposes or reproduction		P	X	\$20.00
GM.16.4	High resolution digital files	For personal use only e.g. Private research or display, reference and study purposes, presentations Image/s not used for commercial purposes or reproduction		P	X	\$40.00
GM.16.5	Reproduction and commercial use of photographs and images	Reproduction rights are not granted with the download or purchase of any digital file of photographs or images				POA
GM.16.6	Reproduction and commercial use of photographs and images			R	Y	
GM.16.7	Photograph Delivery	General purpose digital files may be emailed. High resolution digital files must be delivered on USB and may be collected or posted				
GM.16.8	Email			N		
GM.16.9	USB and collection			F	Y	\$5.00
GM.16.10	USB plus postage and handling within Australia			F	Y	\$10.00
REGIONAL MUSEUM ROOM HIRE						
GM.17	Bond	Refundable	\$200.00	P	X	\$200.00
GM.18	Museum Room Hire	Paid staff in attendance is a requirement of hire conditions				\$40.00
GM.18.1	Hugh Williams Room - Room only	Per hour Between 8.30am - 10.00pm		R	Y	
GM.18.2	Hugh Williams Room and Museum exhibition areas	Per hour Between 8.30am - 10.00pm		R	Y	
GM.18.3	Howe House	Per hour Between 8.30am - 10.00pm		R	Y	
GM.18.4	Hugh Williams Room, Museum exhibition areas and Howe House	Per hour Between 8.30am - 10.00pm		R	Y	\$100.00
GM.19	Cleaning Fee	As per Fees GM.1.1 - GM.1.3	POA	F	Y	POA

Index	Fee Description	Conditions	2013/2014 Fees	Pricing Policy	GST	2014/2015 Fees
GM.20	Breakages, loss or damage	Where applicable cost recovery for replacement or repairs of community rooms and kitchen contents or building plant and equipment	POA	F	Y	POA
GM.21	Administration, staffing, after hours staffing, security or staff call-out fee	As per Fees GM.1.1 - GM.1.3	POA	M	Y	POA
CULTURAL SERVICES - LIBRARY SERVICES						
LIBRARY SALES						
LS.1	Merchandise	Library bags, maps, plastic, etc.				
LS.1.1	Range- \$0.05 to POA	Per item	POA	R	Y	POA
LS.1.2	Commission Fee on consignment stock	Range - 20% to 50% Per item		R	Y	POA
LIBRARY ACTIVITIES						
LS.2	Library Activities					
LS.2.1	Activities range in complexity, amount of consumables and other resources	May be a basic activity or an activity involving e.g. an author, artist, performer, speaker, facilitator or a guided tour or school program				
LS.2.2	Range: free to POA	Per person	POA	P	Y	POA
LS.2.3	Range: free to POA	Per group	POA	P	Y	POA
LS.3	Photographs and Images					
LS.3.1	Supply of digital files of photographs or images in the Local Studies collection					
LS.3.2	Low resolution digital images downloaded from the Library website	For personal use only e.g. Private research or display, reference and study purposes, presentations Image/s not used for commercial purposes or reproduction	Free	N		Free
LS.3.3	General purpose digital files	For personal use only e.g. Private research or display, reference and study purposes, presentations Image/s not used for commercial purposes or reproduction	\$20.00	P	X	\$20.00
LS.3.4	High resolution digital files	For personal use only e.g. Private research or display, reference and study purposes, presentations Image/s not used for commercial purposes or reproduction	\$40.00	P	X	\$40.00

Index	Fee Description	Conditions	2013/2014 Fees	Pricing Policy	GST	2014/2015 Fees
LS.3.5	Reproduction and commercial use of photographs or images	Reproduction rights are not granted with the download or purchase of any digital file of photographs or images				
LS.3.6	Reproduction and/or commercial use		POA	R	Y	POA
LS.3.7	Photograph Delivery	General purpose digital files may be emailed. High resolution digital files must be delivered on USB and may be collected or posted.				
LS.3.8	Email		Free	N		Free
LS.3.9	USB and collection		\$5.00	F	Y	\$5.00
LS.3.10	USB plus postage and handling within Australia		\$10.00	F	Y	\$10.00
LS.4	Card replacement	Borrower's cards - lost or damaged Original card is free	\$2.75	F	X	\$3.00
LS.5	Public Computer Visitor Card - One day	Cost per day Limit of 3 one hour internet sessions per day Wireless access is free of charge		R	Y	\$3.00
LS.6	Public Computer Visitor Card - Four days	Cost per day Limit of 3 one hour internet sessions per day Wireless access is free of charge		R	Y	\$10.00
LS.7	Public Computer Visitor Card - One week	Cost per day Limit of 3 one hour internet sessions per day Wireless access is free of charge		R	Y	\$15.00
LS.8	Visitor's temporary library membership bond	Refundable upon return of all loan items in an undamaged and satisfactory condition		P	X	\$50.00
LS.9	Card replacement	Community Room Access	\$27.00	R	X	\$24.55
LS.10	Ex-Library stock, donations including books and AV formats (poor/good condition) sales		POA	P	Y	POA
LS.11	Inter Library Loan from a Special or Uni Library	Where applicable, cost recovery of outsourced service Plus Fee LS.11.1				
LS.11.1	Inter Library Loan handling fee	Per item		P	Y	\$2.00
LS.11.2	Book or Journal Articles - Black and white	First 50 pages Plus Fee LS.11.3 where applicable	POA	E	Y	POA
LS.11.3	Additional 50 pages		POA	E	Y	POA
LS.11.4	Colour copies		POA	E	Y	POA
LS.11.5	Lost or damaged inter library loan items		POA	E	Y	POA

Index	Fee Description	Conditions	2013/2014 Fees	Pricing Policy	GST	2014/2015 Fees
LS.12	Damaged, Lost or Non repairable items					
LS.12.1	Non repairable or Lost item or component of a kit					
LS.12.2	Replacement cost	Plus Fee LS.12.3	POA*	F	X	POA
LS.12.3	Processing fee		\$4.55	P	X	\$5.00
LS.13	Repairable damaged item		\$9.09	P	X	\$10.00
LS.14	Laminating	24 hour turn around				
LS.14.1	Bus passes		\$2.00	R	Y	\$2.00
LS.14.2	A4 size - Up to 110	Each	\$3.00	R	Y	\$3.00
LS.14.3	A4 size - Over 110 bulk order	Each	\$2.00	R	Y	\$2.00
LS.14.4	A3 size		\$4.00	R	Y	\$4.00
LS.15	Photocopies and Printouts	Black and white				
LS.15.1	A4 size		\$0.20	F	Y	\$0.20
LS.15.2	A3 size		\$0.30	F	Y	\$0.30
LS.16	Photocopies and Printouts	Colour				
LS.16.1	A4 size		\$1.60	R	Y	\$1.00
LS.16.2	A3 size		\$3.20	R	Y	\$2.00
LS.17	Reader printer	Microfilm/Microfiche	\$0.60	R	Y	\$0.60
LS.18	Scanning	per page		P	Y	\$0.20
COMMUNITY ROOMS FEES AND CHARGES						
LS.19	Professional and Administration Fees					
LS.19.1	Staff technical/professional project services-General Manager, Directors, Managers	Per hour or part thereof (Min \$150.00)	\$125.00*	M	Y	\$150.00
LS.19.2	Staff technical/professional project services-General	Per hour or part thereof (Min \$100.00)	\$95.00*	M	Y	\$100.00
LS.19.3	Staff technical/professional project services-Administrative/Clerical	Per hour or part thereof (Min \$75.00)	\$65.00*	M	Y	\$75.00
LS.20	Bond	Refundable				
LS.20.1	Category A - Local Community Groups	Refer to Fees explanatory notes	\$100.00	P	X	\$100.00
LS.20.2	Categories B and C	Refer to Fees explanatory notes	\$200.00	P	X	\$200.00
LS.21	Community Rooms Hire					
LS.21.1	Category A - Free to Local Community Groups	Refer to Fees explanatory notes	Free	N		Free
LS.21.2	Category B	Refer to Fees explanatory notes				
LS.21.3	Tebbutt Room					
LS.21.4	Between 8:30am-10:30pm	Per hour	\$18.00	M	Y	\$18.00
LS.21.5	Half day hire	4hrs between 8:30am-10:30pm Per booking	\$63.00*	M	Y	\$63.00
LS.21.6	All day hire	8hrs between 8:30am-10:30pm Per booking	\$126.00*	M	Y	\$126.00

Index	Fee Description	Conditions	2013/2014 Fees	Pricing Policy	GST	2014/2015 Fees
LS.21.7	Stan Stevens Studio					
LS.21.8	Between 8:30am-10:30pm	Per hour	\$11.00	M	Y	\$11.00
LS.21.9	Half day hire	4hrs between 8:30am-10:30pm Per booking	\$39.00*	M	Y	\$39.00
LS.21.10	All day hire	8hrs between 8:30am-10:30pm Per booking	\$77.00*	M	Y	\$77.00
LS.21.11	Rozzoli Room					
LS.21.12	Between 8:30am-10:30pm	Per hour	\$6.00	M	Y	\$6.00
LS.21.13	Half day hire	4hrs between 8:30am-10:30pm Per booking	\$21.00*	M	Y	\$21.00
LS.21.14	All day hire	8hrs between 8:30am-10:30pm Per booking	\$42.00*	M	Y	\$42.00
LS.21.15	Category C	Refer to Fees explanatory notes				
LS.21.16	Tebbutt Room					
LS.21.17	Between 8:30am-10:30pm	Per hour	\$36.00	M	Y	\$36.00
LS.21.18	Half day hire	4hrs between 8:30am-10:30pm Per booking	\$126.00*	M	Y	\$126.00
LS.21.19	All day hire	8hrs between 8:30am-10:30pm Per booking	\$252.00*	M	Y	\$252.00
LS.21.20	Stan Stevens Studio					
LS.21.21	Between 8:30am-10:30pm	Per hour	\$26.00	M	Y	\$26.00
LS.21.22	Half day hire	4hrs between 8:30am-10:30pm Per booking	\$91.00*	M	Y	\$91.00
LS.21.23	All day hire	8hrs between 8.30am-10.30pm Per booking	\$182.00*	M	Y	\$182.00
LS.21.24	Rozzoli Room					
LS.21.25	Between 8:30am-10:30pm	Per hour	\$18.00	M	Y	\$18.00
LS.21.26	Half day hire	4hrs between 8:30am-10:30pm Per booking	\$63.00*	M	Y	\$63.00
LS.21.27	All day hire	8hrs between 8:30am-10:30pm Per booking	\$126.00*	M	Y	\$126.00
LS.22	Community Rooms and Kitchens Cleaning Fee	Categories A, B and C As per Fees LS.19.1 - LS.19.3	POA*	F	Y	POA
LS.23	After hours security or staff call-out Fee	As per Fees LS.19.1 - LS.19.3	POA*	M	Y	POA
LS.24	Equipment Hire					
LS.24.1	Refundable bond on equipment		POA	P	X	POA
LS.24.2	Electronic Whiteboard Hire	Categories A, B and C Per day	\$11.00	R	Y	\$11.00

Index	Fee Description	Conditions	2013/2014 Fees	Pricing Policy	GST	2014/2015 Fees
LS.25	Failure to pack up equipment and furniture Fee	Categories A, B and C As per Fees LS.19.1 - LS.19.3	POA*	M	Y	POA
LS.26	Breakages, loss or damage	Where applicable cost recovery for replacement or repairs of community rooms and kitchen contents or building plant and equipment	POA	F	Y	POA
CULTURAL SERVICES - VISITOR INFORMATION CENTRE						
MERCHANDISE SALES						
VC.1	Merchandise					
VC.1.1	Range- \$0.05 to POA	Per item	POA	R	Y	POA
VC.1.2	Commission Fee on consignment stock	Range - 10% to 50% Per item		R	Y	POA
VC.2	Commission on bookings	6% commission	POA	R	Y	POA
VC.3	Photographs and Images					
VC.3.1	Supply of digital files of photographs or images					
VC.3.2	Low resolution digital images downloaded from website	For personal use only e.g. Private research or display, reference and study purposes, presentations Image/s not used for commercial purposes or reproduction		N		Free
VC.3.3	General purpose digital files	For personal use only e.g. Private research or display, reference and study purposes, presentations Image/s not used for commercial purposes or reproduction		P	X	\$20.00
VC.3.4	High resolution digital files	For personal use only e.g. Private research or display, reference and study purposes, presentations Image/s not used for commercial purposes or reproduction		P	X	\$40.00
VC.3.5	Reproduction and commercial use of photographs or images	Reproduction rights are not granted with the download or purchase of any digital file of photographs or images				
VC.3.6	Reproduction and/or commercial use			R	Y	POA
VC.3.7	Photograph delivery	General purpose digital files may be emailed High resolution digital files must be delivered on USB and may be collected or posted				
VC.3.8	Email			N		Free

Index	Fee Description	Conditions	2013/2014 Fees	Pricing Policy	GST	2014/2015 Fees
VC.3.9	USB and collection			F	Y	\$5.00
VC.3.10	USB plus postage and handling within Australia			F	Y	\$10.00
FINANCIAL SERVICES - OPERATIONS						
ACCOUNTING SERVICES						
FS.1	Professional and Administration Fees					
FS.1.1	Staff technical/professional project services-General Manager, Directors, Managers	Per hour or part thereof (Min \$150.00)	\$125.00*	M	Y	\$150.00
FS.1.2	Staff technical/professional project services-General	Per hour or part thereof (Min \$100.00)	\$95.00*	M	Y	\$100.00
FS.1.3	Staff technical/professional project services-Administrative/Clerical	Per hour or part thereof (Min \$75.00)	\$65.00*	M	Y	\$75.00
FS.2	Administration Charges					
FS.2.1	Refunds	Excluding Rates	\$34.15	P	Y	\$38.65
FS.2.2	Administration Fee and Bank charges on Returned Cheques or EFT		\$43.45	F	Y	\$49.20
FS.2.3	Administration Fee and Bank charges on Cheque or EFT cancellation or Stop Payment request		\$37.25	F	Y	\$41.00
FS.2.4	Private Works Administration Charges	Up to 20% of cost	POA*	F	Y	POA
RATING SERVICES						
FS.3	Copy of Rate Notice		\$15.50	F	X	\$15.50
FS.4	Rates Administration Charges					
FS.4.1	Administration Fee on refund		\$34.15	P	X	\$35.15
FS.4.2	Administration Fee and Bank charges on Returned Cheques or Direct Debits		\$43.45	F	X	\$44.75
FS.4.3	Administration Fee and Bank charges on Cheque cancellation or Stop Payment request		\$37.25	F	X	\$37.25
FS.5	Section 603 Certificates					
FS.5.1	S.603 Certificate	or as determined by Legislation	\$70.00	S	X	\$70.00
FS.5.2	S.603 Certificate Urgency Fee	Plus Fee FS.5.1	\$48.59*	F	X	\$50.00
FS.5.3	S.603 Certificate Fax Copy Fee		\$15.50	F	Y	\$15.50
FS.5.4	S.603 Certificate Refunds Administration Fee		\$34.15	F	X	\$35.15
FS.6	Legal Charges					
FS.6.1	Court Fees	As per Court Fees Schedule	POA*	E	X	POA

Index	Fee Description	Conditions	2013/2014 Fees	Pricing Policy	GST	2014/2015 Fees
INFORMATION SERVICES						
EXTRACTION and COLLATION OF INFORMATION FROM DATABASES						
IS.1	Professional and Administration Fees					
IS.1.1	Staff technical/professional project services-General Manager, Directors, Managers	Per hour or part thereof (Min \$136.37)	\$113.64*	M	X	\$136.37
IS.1.2	Staff technical/professional project services-General	Per hour or part thereof (Min \$90.91)	\$86.36*	M	X	\$90.91
IS.1.3	Staff technical/professional project services-Administrative/Clerical	Per hour or part thereof (Min \$68.19)	\$59.09*	M	X	\$68.19
IS.1.4	Minimum Fee	Applicable for Fees IS.1.1 to IS.1.3	\$216.00	R	X	\$216.00
IS.1.5	Printout Paper- per 100 pages	Minimum fee of \$216.00	\$75.14	R	X	\$75.14
IS.1.6	Information provided - per Diskette	Minimum fee of \$216.00	\$2.82	R	X	\$2.82
IS.1.7	Information provided - per CD Rom	Minimum fee of \$216.00	\$2.82	R	X	\$2.82
WEB SERVICES - RELATED ORGANISATIONS						
IS.2	Mini Site Project Establishment	Minimum fee of \$1,500.00 applies	POA	R	Y	POA
IS.3	Hourly Rate for Mini Site Project Establishment	Per hour or part thereof (Min \$100.00) Minimum fee \$1,500.00	\$95.00*	R	Y	\$100.00
IS.4	Mini Site Hosting	Minimum fee of \$1,000.00 per annum applies Price negotiable dependent on size of site (e.g. amount of disk storage space required) Per annum	POA	R	Y	POA
IS.5	Web Development/Consultancy/Support	Per hour or part thereof (Min \$100.00)	\$95.00*	R	Y	\$100.00

