

Hawkesbury Waste Management Facility - Yearly Summary for 2024-25 (commencing September 2024)

Licence number - 5293

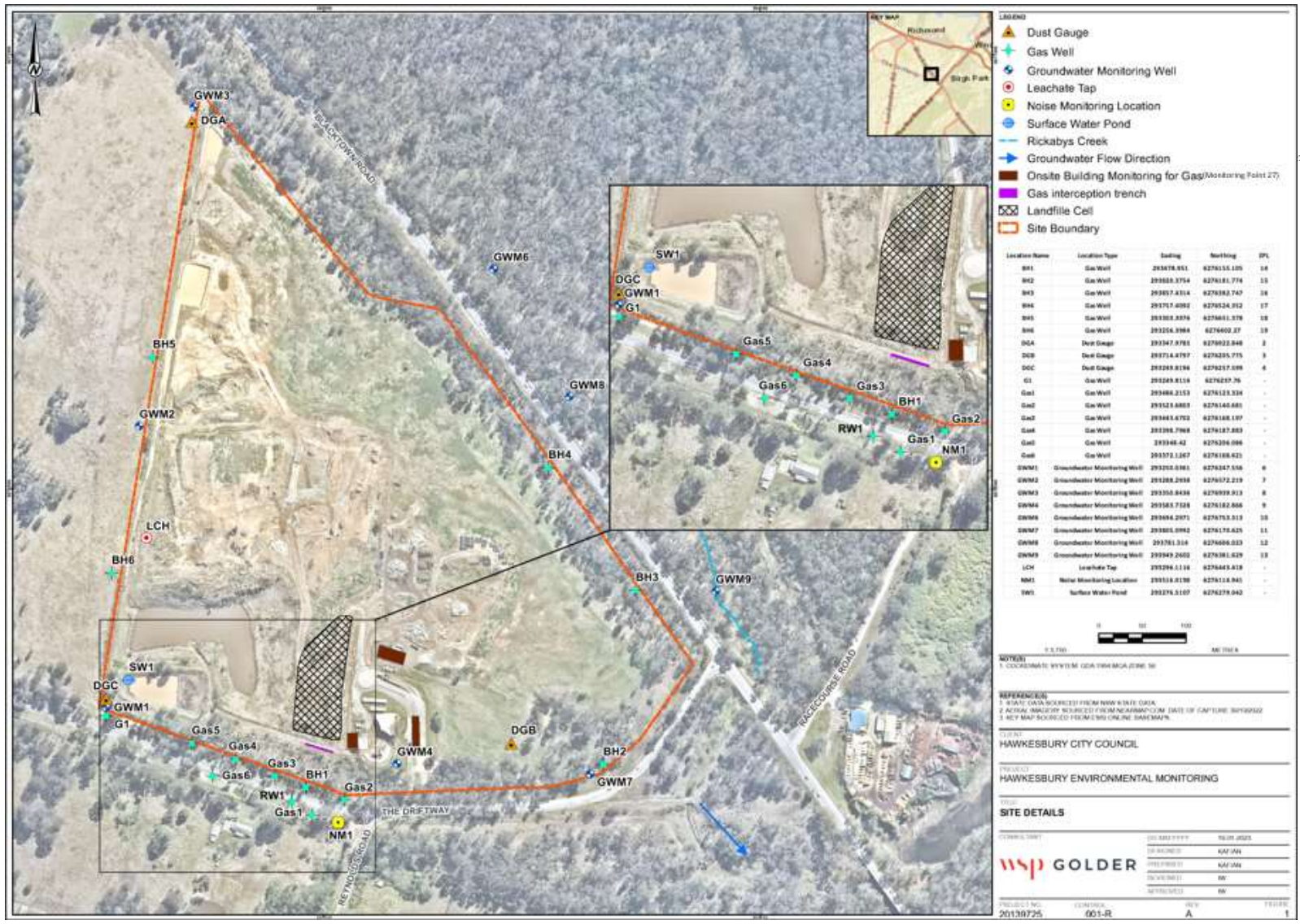
Hawkesbury Waste Management Facility - The Driftway, South Windsor NSW 2756 Licencee - Hawkesbury City Council

Public Register : <https://www.epa.nsw.gov.au/licensing-and-regulation/public-registers>

Licence Period - 25th July - 24th July

LOR = Limit of Reporting

NT = Not Tested



Waste Management Facility - 5293

Monitoring Point 14 - BH1

Pollutant	Unit	Monitoring Frequency	Date Sampled	Date Sampled	Date Sampled	Date Sampled	Date Sampled	Date Sampled	Date Sampled	
			30.09.2024	31.10.2024	26.11.2024	16.12.2024	23.01.2025	25.02.2025	31.03.2025	23.04.2025
			Date Obtained	Date Obtained	Date Obtained	Date Obtained	Date Obtained	Date Obtained	Date Obtained	Date Obtained
			Sample Code	Sample Code	Sample Code	Sample Code	Sample Code	Sample Code	Sample Code	Sample Code
Carbon Dioxide	% v/v	Monthly	0.5	18.7	20	1	1.4	0.2	0.2	0.2
Methane	% v/v	Monthly	0	5.4	4.4	0	0	0	0	0

Date Sampled	Date Sampled	Date Sampled	Date Sampled	Date Sampled	Date Sampled
Date Obtained	Date Obtained	Date Obtained	Date Obtained	Date Obtained	Date Obtained
Sample Code	Sample Code	Sample Code	Sample Code	Sample Code	Sample Code

Carbon Dioxide	% v/v	Monthly
Methane	% v/v	Monthly

Monitoring Point 15 - BH2

Pollutant	Unit	Monitoring Frequency	Date Sampled	Date Sampled
			Date Obtained	Date Obtained
			Sample Code	Sample Code
Carbon Dioxide	% v/v	Every 6 Months		
Methane	% v/v	Every 6 Months		

Monitoring Point 16 - BH3

Pollutant	Unit	Monitoring Frequency	Date Sampled	Date Sampled
			26.11.2024	27.02.2025
			Date Obtained	Date Obtained
			Sample Code	Sample Code
Carbon Dioxide	% v/v	Every 6 Months	3.5	0.6
Methane	% v/v	Every 6 Months	0	0

Monitoring Point 17 - BH4

Pollutant	Unit	Monitoring Frequency	Date Sampled	Date Sampled
			26.11.2024	27.02.2025
			Date Obtained	Date Obtained
			Sample Code	Sample Code

Waste Management Facility - 5293

Carbon Dioxide	% v/v	Every 6 Months	1.3	1
Methane	% v/v	Every 6 Months	0	0

Monitoring Point 18 - BH5

Pollutant	Unit	Monitoring Frequency	Date Sampled	Date Sampled	Date Sampled	Date Sampled	Date Sampled	Date Sampled	Date Sampled	Date Sampled
			30.09.2024	31.10.2024	26.11.2024	16.12.2024	23.01.2025	27.02.2025	31.03.2025	23.04.2025
			Date Obtained	Date Obtained	Date Obtained	Date Obtained	Date Obtained	Date Obtained	Date Obtained	Date Obtained
			Sample Code	Sample Code	Sample Code	Sample Code	Sample Code	Sample Code	Sample Code	Sample Code
Carbon Dioxide	% v/v	Monthly	0.3	9.5	0.2	0	0.2	0.1	0.2	3.2
Methane	% v/v	Monthly	0	7.1	0.1	0	0	0	0	0

Date Sampled	Date Sampled	Date Sampled	Date Sampled	Date Sampled	Date Sampled
Date Obtained	Date Obtained	Date Obtained	Date Obtained	Date Obtained	Date Obtained
Sample Code	Sample Code	Sample Code	Sample Code	Sample Code	Sample Code
Carbon Dioxide	% v/v	Monthly			
Methane	% v/v	Monthly			

Monitoring Point 19 - BH6

Pollutant	Unit	Monitoring Frequency	Date Sampled	Date Sampled	Date Sampled	Date Sampled	Date Sampled	Date Sampled	Date Sampled	Date Sampled
			30.09.2024	31.10.2024	26.11.2024	16.12.2024	23.01.2025	27.02.2025	31.03.2025	23.04.2025
			Date Obtained	Date Obtained	Date Obtained	Date Obtained	Date Obtained	Date Obtained	Date Obtained	Date Obtained
			Sample Code	Sample Code	Sample Code	Sample Code	Sample Code	Sample Code	Sample Code	Sample Code
Carbon Dioxide	% v/v	Monthly	0.2	1.5	0.4	0.2	0.3	0.1	0.2	0.3
Methane	% v/v	Monthly	0	0.2	0	0	0	0	0	0

Date Sampled	Date Sampled	Date Sampled	Date Sampled	Date Sampled	Date Sampled
Date Obtained	Date Obtained	Date Obtained	Date Obtained	Date Obtained	Date Obtained
Sample Code	Sample Code	Sample Code	Sample Code	Sample Code	Sample Code
Carbon Dioxide	% v/v	Monthly			
Methane	% v/v	Monthly			

Monitoring Point 20 - G1

Pollutant	Unit	Monitoring Frequency	Date Sampled	Date Sampled	Date Sampled	Date Sampled	Date Sampled	Date Sampled	Date Sampled	
			30.09.2024	31.10.2024	26.11.2024	16.12.2024	23.01.2025	27.02.2025	31.03.2025	23.04.2025
			Date Obtained	Date Obtained	Date Obtained	Date Obtained	Date Obtained	Date Obtained	Date Obtained	Date Obtained
			Sample Code	Sample Code	Sample Code	Sample Code	Sample Code	Sample Code	Sample Code	Sample Code

Waste Management Facility - 5293

Pollutant	Unit	Monitoring Frequency	Sample Code	Sample Code	Sample Code	Sample Code	Sample Code	Sample Code	Sample Code
Carbon Dioxide	% v/v	Monthly	0.3	12.3	6.8	0.1	0.1	0.1	0.1
Methane	% v/v	Monthly	0	0	0	0	0	0	0

Date Sampled	Date Sampled	Date Sampled	Date Sampled	Date Sampled	Date Sampled
Date Obtained	Date Obtained	Date Obtained	Date Obtained	Date Obtained	Date Obtained
Sample Code	Sample Code	Sample Code	Sample Code	Sample Code	Sample Code
Carbon Dioxide	% v/v	Monthly			
Methane	% v/v	Monthly			

Point 21 - Gas2

Pollutant	Unit	Monitoring Frequency	Date Sampled	Date Sampled	Date Sampled	Date Sampled	Date Sampled	Date Sampled	Date Sampled	
			30.09.2024	31.10.2024	26.11.2024	16.12.2024	23.01.2025	25.02.2025	31.03.2025	23.04.2025
			Date Obtained	Date Obtained	Date Obtained	Date Obtained	Date Obtained	Date Obtained	Date Obtained	Date Obtained
			Sample Code	Sample Code	Sample Code	Sample Code	Sample Code	Sample Code	Sample Code	Sample Code
Carbon Dioxide	% v/v	Monthly	0.3	5.5	7.1	0.1	0.1	0.1	0.2	
Methane	% v/v	Monthly	0	0	0	0	0	0	0	

Date Sampled	Date Sampled	Date Sampled	Date Sampled	Date Sampled	Date Sampled
Date Obtained	Date Obtained	Date Obtained	Date Obtained	Date Obtained	Date Obtained
Sample Code	Sample Code	Sample Code	Sample Code	Sample Code	Sample Code
Carbon Dioxide	% v/v	Monthly			
Methane	% v/v	Monthly			

Point 22 - Gas3

Pollutant	Unit	Monitoring Frequency	Date Sampled	Date Sampled	Date Sampled	Date Sampled	Date Sampled	Date Sampled	Date Sampled	
			30.09.2024	31.10.2024	26.11.2024	16.12.2024	23.01.2025	25.02.2025	31.03.2025	23.04.2025
			Date Obtained	Date Obtained	Date Obtained	Date Obtained	Date Obtained	Date Obtained	Date Obtained	Date Obtained
			Sample Code	Sample Code	Sample Code	Sample Code	Sample Code	Sample Code	Sample Code	Sample Code
Carbon Dioxide	% v/v	Monthly	0.6	0.5	0.4	0.9	0.9	0.3	1.5	
Methane	% v/v	Monthly	0	0	0	0	0	0	0	

Waste Management Facility - 5293

			Date Sampled	Date Sampled	Date Sampled	Date Sampled	Date Sampled	Date Sampled
			Date Obtained	Date Obtained	Date Obtained	Date Obtained	Date Obtained	Date Obtained
			Sample Code	Sample Code	Sample Code	Sample Code	Sample Code	Sample Code
Carbon Dioxide	% v/v	Monthly						
Methane	% v/v	Monthly						

Point 23 - Gas4

Pollutant	Unit	Monitoring Frequency	Date Sampled	Date Sampled	Date Sampled	Date Sampled	Date Sampled	Date Sampled	Date Sampled	
			30.09.2024	31.10.2024	26.11.2024	16.12.2024	23.01.2025	25.02.2025	31.03.2025	23.04.2025
			Date Obtained	Date Obtained	Date Obtained	Date Obtained	Date Obtained	Date Obtained	Date Obtained	Date Obtained
			Sample Code	Sample Code	Sample Code	Sample Code	Sample Code	Sample Code	Sample Code	
Carbon Dioxide	% v/v	Monthly	3.8	4.9	5.4	3.7	2.3	2.3	5.4	2.7
Methane	% v/v	Monthly	0	0	0	0	0	0	0	0

			Date Sampled	Date Sampled	Date Sampled	Date Sampled	Date Sampled	Date Sampled
			Date Obtained	Date Obtained	Date Obtained	Date Obtained	Date Obtained	Date Obtained
			Sample Code	Sample Code	Sample Code	Sample Code	Sample Code	Sample Code
Carbon Dioxide	% v/v	Monthly						
Methane	% v/v	Monthly						

Point 24- Gas 6

Pollutant	Unit	Monitoring Frequency	Date Sampled	Date Sampled	Date Sampled	Date Sampled	Date Sampled	Date Sampled	Date Sampled	
			30.09.2024	31.10.2024	26.11.2024	16.12.2024	23.01.2025	25.02.2025	31.03.2025	23.04.2025
			Date Obtained	Date Obtained	Date Obtained	Date Obtained	Date Obtained	Date Obtained	Date Obtained	Date Obtained
			Sample Code	Sample Code	Sample Code	Sample Code	Sample Code	Sample Code	Sample Code	
Carbon Dioxide	% v/v	Monthly	3.6	5	5	3.4	4.1	0.1	0.6	4.8
Methane	% v/v	Monthly	0	0	0	0	0	0	0	0

			Date Sampled	Date Sampled	Date Sampled	Date Sampled	Date Sampled	Date Sampled
			Date Obtained	Date Obtained	Date Obtained	Date Obtained	Date Obtained	Date Obtained
			Sample Code	Sample Code	Sample Code	Sample Code	Sample Code	Sample Code
Carbon Dioxide	% v/v	Monthly						

Waste Management Facility - 5293

Methane	% v/v	Monthly							
---------	-------	---------	--	--	--	--	--	--	--

Point 25 - Gas interception trench

Pollutant	Unit	Monitoring Frequency	Date Sampled	Date Sampled	Date Sampled	Date Sampled	Date Sampled	Date Sampled	Date Sampled	
			30.09.2024	31.10.2024	26.11.2024	16.12.2024	23.01.2025	25.02.2025	31.03.2025	23.04.2025
			Date Obtained	Date Obtained	Date Obtained	Date Obtained	Date Obtained	Date Obtained	Date Obtained	Date Obtained
			Sample Code	Sample Code	Sample Code	Sample Code	Sample Code	Sample Code	Sample Code	Sample Code
Carbon Dioxide	% v/v	Monthly	0	0	0.1	0	0	0.1	0.1	0
Methane	% v/v	Monthly	0	0	0	0	0	0	0	0

Date Sampled	Date Sampled	Date Sampled	Date Sampled	Date Sampled	Date Sampled
Date Obtained	Date Obtained	Date Obtained	Date Obtained	Date Obtained	Date Obtained
Sample Code	Sample Code	Sample Code	Sample Code	Sample Code	Sample Code

Carbon Dioxide	% v/v	Monthly							
Methane	% v/v	Monthly							

RW1

Pollutant	Unit	Monitoring Frequency	Date Sampled	Date Sampled	Date Sampled	Date Sampled	Date Sampled	Date Sampled	Date Sampled	
			30.09.2024	31.10.2024	26.11.2024	16.12.2024	23.01.2025	25.02.2025	31.03.2025	23.04.2025
			Date Obtained	Date Obtained	Date Obtained	Date Obtained	Date Obtained	Date Obtained	Date Obtained	Date Obtained
			Sample Code	Sample Code	Sample Code	Sample Code	Sample Code	Sample Code	Sample Code	Sample Code
Carbon Dioxide	% v/v	Monthly	5.4	15	17.9	0.2	0.4	0.2	3.3	0.1
Methane	% v/v	Monthly	0	0	0	0	0	0	0	0

Date Sampled	Date Sampled	Date Sampled	Date Sampled	Date Sampled	Date Sampled
Date Obtained	Date Obtained	Date Obtained	Date Obtained	Date Obtained	Date Obtained
Sample Code	Sample Code	Sample Code	Sample Code	Sample Code	Sample Code

Carbon Dioxide	% v/v	Monthly							
Methane	% v/v	Monthly							

Gas1

Date Sampled	Date Sampled	Date Sampled	Date Sampled	Date Sampled	Date Sampled	Date Sampled	Date Sampled
30.09.2024	31.10.2024	26.11.2024	16.12.2024	23.01.2025	25.02.2025	31.03.2025	23.04.2025

Waste Management Facility - 5293

Pollutant	Unit	Monitoring Frequency	Date Obtained	Date Obtained	Date Obtained	Date Obtained	Date Obtained	Date Obtained	Date Obtained	
			Sample Code	Sample Code	Sample Code	Sample Code	Sample Code	Sample Code	Sample Code	
			Carbon Dioxide	% v/v	Monthly	4.1	7.3	6.5	3.4	3
Methane	% v/v	Monthly	0	0	0	0	0	0	0	0

Date Sampled	Date Sampled	Date Sampled	Date Sampled	Date Sampled	Date Sampled
Date Obtained	Date Obtained	Date Obtained	Date Obtained	Date Obtained	Date Obtained
Sample Code	Sample Code	Sample Code	Sample Code	Sample Code	Sample Code

Carbon Dioxide	% v/v	Monthly
Methane	% v/v	Monthly

Gas5

Pollutant	Unit	Monitoring Frequency	Date Sampled	Date Sampled	Date Sampled	Date Sampled	Date Sampled	Date Sampled	Date Sampled	
			30.09.2024	31.10.2024	26.11.2024	16.12.2024	23.01.2025	25.05.2025	31.03.2025	23.04.2025
			Date Obtained	Date Obtained	Date Obtained	Date Obtained	Date Obtained	Date Obtained	Date Obtained	Date Obtained
			Sample Code	Sample Code	Sample Code	Sample Code	Sample Code	Sample Code	Sample Code	Sample Code
Carbon Dioxide	% v/v	Monthly	5.6	6.5	5.1	3.2	1.2	0.1	1.9	0.7
Methane	% v/v	Monthly	0	0	0	0	0	0	0	0

Date Sampled	Date Sampled	Date Sampled	Date Sampled	Date Sampled	Date Sampled
Date Obtained	Date Obtained	Date Obtained	Date Obtained	Date Obtained	Date Obtained
Sample Code	Sample Code	Sample Code	Sample Code	Sample Code	Sample Code

Carbon Dioxide	% v/v	Monthly
Methane	% v/v	Monthly

Point 27 - Inside all buildings	Unit	Monitoring Frequency	Date Sampled	Date Sampled	Date Sampled	Date Sampled
			26.11.2024			
			Date Data Obtained	Date Data Obtained	Date Data Obtained	Date Data Obtained
Sample Code	Sample Code	Sample Code	Sample Code			
HCC Lunch Room Demountable						
Methane	% v/v	Quarterly	0			
HCC Toliet Demountable						
Methane	% v/v	Quarterly	0			
Recycling Shed						
Methane	% v/v	Quarterly	0			
Gatehouse/ Weighbridge						
Methane	% v/v	Quarterly	0			
Tools Storage Shed						
Methane	% v/v	Quarterly	0			
Equipment Shed						
Methane	% v/v	Quarterly	0			

Waste Management Facility - 5293

Monitoring Point 2 - DGA

Pollutant	Unit	Monitoring Frequency	Start Date	Start Date	Start Date	Start Date	
			26.11.2024				
			Data Collection Date	Data Collection Date	Data Collection Date	Data Collection Date	
Sample Code	Sample Code	Sample Code	Sample Code				
Particules deposited Matter	g/m ² /month	Quarterly	<0.3				

Monitoring Point 3 - DGB

Pollutant	Unit	Monitoring Frequency	Start Date	Start Date	Start Date	Start Date	
			26.11.2024				
			Data Collection Date	Data Collection Date	Data Collection Date	Data Collection Date	
Sample Code	Sample Code	Sample Code	Sample Code				
Particules deposited Matter	g/m ² /month	Quarterly	0.7				

Monitoring Point 4 - DGC

Pollutant	Unit	Monitoring Frequency	Start Date	Start Date	Start Date	Start Date	
			26.11.2024				
			Data Collection Date	Data Collection Date	Data Collection Date	Data Collection Date	
Sample Code	Sample Code	Sample Code	Sample Code				
Particules deposited Matter	g/m ² /month	Quarterly	<0.3				

Waste Management Facility - 5293

Monitoring Point 1 - LCH

Pollutant	Unit	Monitoring Frequency	Date Sampled	Date Sampled	Date Sampled	Date Sampled
			26.11.2024			
			Date Data Obtained	Date Data Obtained	Date Data Obtained	Date Data Obtained
			Note: Unable to be sampled due to leachate pumps offline.			
Sample Code	Sample Code	Sample Code	Sample Code			
Alkalinity (as calcium carbonate)	mg/L	Quarterly	-			
Aluminium	mg/L	Yearly				
Arsenic	mg/L	Yearly				
Barium	mg/L	Yearly				
Benzene	mg/L	Yearly				
Biochemical oxygen demand	mg/L	Yearly				
Cadmium	mg/L	Yearly				
Calcium	mg/L	Quarterly	-			
Chemical oxygen demand	mg/L	Yearly				
Chloride	mg/L	Quarterly	-			
Chromium (hexavalent)	mg/L	Yearly				
Cobalt	mg/L	Yearly				
Conductivity	µS/cm	Quarterly	-			
Copper	mg/L	Yearly				
Ethyl benzene	mg/L	Yearly				
Fluoride	mg/L	Yearly				
Lead	mg/L	Yearly				
Magnesium	mg/L	Quarterly	-			
Manganese	mg/L	Yearly				
Mercury	mg/L	Yearly				
Nitrate	mg/L	Quarterly	-			
Nitrite	mg/L	Quarterly	-			
Nitrogen (ammonia)	mg/L	Quarterly	-			
Organochlorine pesticides	mg/L	Yearly				
Organochlorine pesticides	mg/L	Yearly				
pH	pH	Quarterly	-			
Phosphate	mg/L	Yearly				
Phosphorus (total)	mg/L	Quarterly	-			
Potassium	mg/L	Quarterly	-			
Sodium	mg/L	Quarterly	-			
Sulfate	mg/L	Quarterly	-			
Toluene	mg/L	Yearly				
Total chromium	mg/L	Yearly				
Total dissolved solids	mg/L	Quarterly	-			
Total Iron	mg/L	Yearly				
Total organic carbon	mg/L	Yearly				
Total petroleum hydrocarbons C6-C9	mg/L	Yearly				
C10-C14	mg/L	Yearly				
C15-C28	mg/L	Yearly				
C29-C36	mg/L	Yearly				
C10-C36 (Sum)	mg/L	Yearly				
Total Phenolics	mg/L	Yearly				
Xylene	mg/L	Yearly				
Zinc	mg/L	Yearly				

Waste Management Facility - 5293

Monitoring Point 5 - SW1

Pollutant	Unit	Monitoring Frequency	Date Sampled	Date Sampled	Date Sampled	Date Sampled
			26.11.2024			
			Date Data Obtained	Date Data Obtained	Date Data Obtained	Date Data Obtained
			Sample Code	Sample Code	Sample Code	Sample Code
Alkalinity (as calcium carbonate)	mg/L	Quarterly	320			
Ammonia	mg/L	Quarterly	0.6			
Biochemical oxygen demand	mg/L	Quarterly	5			
Sulfate	mg/L	Quarterly	51			
Total Phenolics	mg/L	Yearly				

Waste Management Facility - 5293

Monitoring Point 6 - GWM1

Pollutant	Unit	Monitoring frequency	Date Sampled	Date Sampled	Date Sampled	Date Sampled
			24.11.2024			
			Date Data Obtained	Date Data Obtained	Date Data Obtained	Date Data Obtained
			Sample Code	Sample Code	Sample Code	Sample Code
Alkalinity (as calcium carbonate)	mg/L	Quarterly	320			
Aluminium	mg/L	Yearly				
Ammonia	mg/L	Quarterly	<0.05			
Arsenic	mg/L	Yearly				
Barium	mg/L	Yearly				
Benzene	mg/L	Yearly				
Biochemical oxygen demand	mg/L	Yearly				
Cadmium	mg/L	Yearly				
Calcium	mg/L	Quarterly	92			
Carbonate	mg/L	Quarterly	<1			
Chemical oxygen demand	mg/L	Yearly				
Chloride	mg/L	Quarterly	4700			
Chlorinated volatile compound	mg/L	Yearly				
Chromium (hexavalent)	mg/L	Yearly				
Cobalt	mg/L	Yearly				
Conductivity	µS/cm	Quarterly	12000			
Copper	mg/L	Yearly				
Ethyl benzene	mg/L	Yearly				
Fluoride	mg/L	Yearly				
Lead	mg/L	Yearly				
Magnesium	mg/L	Quarterly	330			
Manganese	mg/L	Yearly				
Mercury	mg/L	Yearly				
Nitrogen Oxides	mg/L	Yearly				
Organochlorine pesticides	mg/L	Yearly				
Organophosphate pesticides	mg/L	Yearly				
pH	pH	Quarterly	-			
Phosphate	mg/L	Yearly				
Phosphorus (Total)	mg/L	Quarterly	0.12			
Potassium	mg/L	Quarterly	2.5			
Salinity	mg/L	Quarterly	8100			
Sodium	mg/L	Quarterly	2100			
Sulfate	mg/L	Quarterly	300			
Toluene	mg/L	Yearly				
Total chromium	mg/L	Yearly				
Total dissolved solids	mg/L	Quarterly	8900			
Total organic carbon	mg/L	Yearly				
Total petroleum hydrocarbons C6-C9	mg/L	Yearly				
C10-C14	mg/L	Yearly				
C15-C28	mg/L	Yearly				
C29-C36	mg/L	Yearly				
C10-C36 (Sum)	mg/L	Yearly				
Total Phenolics	mg/L	Yearly				
Xylene	mg/L	Yearly				
Zinc	mg/L	Yearly				

Waste Management Facility - 5293

Monitoring Point 7 - GWM2

Pollutant	Unit	Monitoring frequency	Date Sampled	Date Sampled	Date Sampled	Date Sampled
			24.11.2024			
			Date Data Obtained	Date Data Obtained	Date Data Obtained	Date Data Obtained
			Sample Code	Sample Code	Sample Code	Sample Code
Alkalinity (as calcium carbonate)	mg/L	Quarterly	210			
Aluminium	mg/L	Yearly				
Ammonia	mg/L	Quarterly	0.02			
Arsenic	mg/L	Yearly				
Barium	mg/L	Yearly				
Benzene	mg/L	Yearly				
Biochemical oxygen demand	mg/L	Yearly				
Cadmium	mg/L	Yearly				
Calcium	mg/L	Quarterly	100			
Carbonate	mg/L	Quarterly	<1			
Chemical oxygen demand	mg/L	Yearly				
Chloride	mg/L	Quarterly	3500			
Chlorinated volatile compound	mg/L	Yearly				
Chromium (hexavalent)	mg/L	Yearly				
Cobalt	mg/L	Yearly				
Conductivity	µS/cm	Quarterly	9200			
Copper	mg/L	Yearly				
Ethyl benzene	mg/L	Yearly				
Fluoride	mg/L	Yearly				
Lead	mg/L	Yearly				
Magnesium	mg/L	Quarterly	290			
Manganese	mg/L	Yearly				
Mercury	mg/L	Yearly				
Nitrogen Oxides	mg/L	Yearly				
Organochlorine pesticides	mg/L	Yearly				
Organophosphate pesticides	mg/L	Yearly				
pH	pH	Quarterly	-			
Phosphate	mg/L	Yearly				
Phosphorus (Total)	mg/L	Quarterly	0.19			
Potassium	mg/L	Quarterly	1.1			
Salinity	mg/L	Quarterly	5900			
Sodium	mg/L	Quarterly	1900			
Sulfate	mg/L	Quarterly	200			
Toluene	mg/L	Yearly				
Total chromium	mg/L	Yearly				
Total dissolved solids	mg/L	Quarterly	6000			
Total organic carbon	mg/L	Yearly				
Total petroleum hydrocarbons C6-C9	mg/L	Yearly				
C10-C14	mg/L	Yearly				
C15-C28	mg/L	Yearly				
C29-C36	mg/L	Yearly				
C10-C36 (Sum)	mg/L	Yearly				
Total Phenolics	mg/L	Yearly				
Xylene	mg/L	Yearly				
Zinc	mg/L	Yearly				

Waste Management Facility - 5293

Monitoring Point 8 - GWM3

Pollutant	Unit	Monitoring frequency	Date Sampled	Date Sampled	Date Sampled	Date Sampled
			24.11.2024			
			Date Data Obtained	Date Data Obtained	Date Data Obtained	Date Data Obtained
			Sample Code	Sample Code	Sample Code	Sample Code
Alkalinity (as calcium carbonate)	mg/L	Quarterly	540			
Aluminium	mg/L	Yearly				
Ammonia	mg/L	Quarterly	<0.05			
Arsenic	mg/L	Yearly				
Barium	mg/L	Yearly				
Benzene	mg/L	Yearly				
Biochemical oxygen demand	mg/L	Yearly				
Cadmium	mg/L	Yearly				
Calcium	mg/L	Quarterly	120			
Carbonate	mg/L	Quarterly	<1			
Chemical oxygen demand	mg/L	Yearly				
Chloride	mg/L	Quarterly	8000			
Chlorinated volatile compound	mg/L	Yearly				
Chromium (hexavalent)	mg/L	Yearly				
Cobalt	mg/L	Yearly				
Conductivity	µS/cm	Quarterly	19000			
Copper	mg/L	Yearly				
Ethyl benzene	mg/L	Yearly				
Fluoride	mg/L	Yearly				
Lead	mg/L	Yearly				
Magnesium	mg/L	Quarterly	610			
Manganese	mg/L	Yearly				
Mercury	mg/L	Yearly				
Nitrogen Oxides	mg/L	Yearly				
Organochlorine pesticides	mg/L	Yearly				
Organophosphate pesticides	mg/L	Yearly				
pH	pH	Quarterly	-			
Phosphate	mg/L	Yearly				
Phosphorus (Total)	mg/L	Quarterly	0.34			
Potassium	mg/L	Quarterly	2.7			
Salinity	mg/L	Quarterly	12000			
Sodium	mg/L	Quarterly	3700			
Sulfate	mg/L	Quarterly	600			
Toluene	mg/L	Yearly				
Total chromium	mg/L	Yearly				
Total dissolved solids	mg/L	Quarterly	15000			
Total organic carbon	mg/L	Yearly				
Total petroleum hydrocarbons C6-C9	mg/L	Yearly				
C10-C14	mg/L	Yearly				
C15-C28	mg/L	Yearly				
C29-C36	mg/L	Yearly				
C10-C36 (Sum)	mg/L	Yearly				
Total Phenolics	mg/L	Yearly				
Xylene	mg/L	Yearly				
Zinc	mg/L	Yearly				

Waste Management Facility - 5293

Monitoring Point 9 - GWM4

Pollutant	Unit	Monitoring frequency	Date Sampled	Date Sampled	Date Sampled	Date Sampled
			24.11.2024			
			Date Data Obtained	Date Data Obtained	Date Data Obtained	Date Data Obtained
			Sample Code	Sample Code	Sample Code	Sample Code
Alkalinity (as calcium carbonate)	mg/L	Quarterly	93			
Aluminium	mg/L	Yearly				
Ammonia	mg/L	Quarterly	<0.05			
Arsenic	mg/L	Yearly				
Barium	mg/L	Yearly				
Benzene	mg/L	Yearly				
Biochemical oxygen demand	mg/L	Yearly				
Cadmium	mg/L	Yearly				
Calcium	mg/L	Quarterly	22			
Carbonate	mg/L	Quarterly	<1			
Chemical oxygen demand	mg/L	Yearly				
Chloride	mg/L	Quarterly	4000			
Chlorinated volatile compound	mg/L	Yearly				
Chromium (hexavalent)	mg/L	Yearly				
Cobalt	mg/L	Yearly				
Conductivity	µS/cm	Quarterly	10000			
Copper	mg/L	Yearly				
Ethyl benzene	mg/L	Yearly				
Fluoride	mg/L	Yearly				
Lead	mg/L	Yearly				
Magnesium	mg/L	Quarterly	290			
Manganese	mg/L	Yearly				
Mercury	mg/L	Yearly				
Nitrogen Oxides	mg/L	Yearly				
Organochlorine pesticides	mg/L	Yearly				
Organophosphate pesticides	mg/L	Yearly				
pH	pH	Quarterly	-			
Phosphate	mg/L	Yearly				
Phosphorus (Total)	mg/L	Quarterly	0.05			
Potassium	mg/L	Quarterly	1.6			
Salinity	mg/L	Quarterly	6700			
Sodium	mg/L	Quarterly	1700			
Sulfate	mg/L	Quarterly	140			
Toluene	mg/L	Yearly				
Total chromium	mg/L	Yearly				
Total dissolved solids	mg/L	Quarterly	7100			
Total organic carbon	mg/L	Yearly				
Total petroleum hydrocarbons C6-C9	mg/L	Yearly				
C10-C14	mg/L	Yearly				
C15-C28	mg/L	Yearly				
C29-C36	mg/L	Yearly				
C10-C36 (Sum)	mg/L	Yearly				
Total Phenolics	mg/L	Yearly				
Xylene	mg/L	Yearly				
Zinc	mg/L	Yearly				

Waste Management Facility - 5293

Monitoring Point 10 - GWM6

Pollutant	Unit	Monitoring frequency	Date Sampled	Date Sampled	Date Sampled	Date Sampled
			24.11.2024			
			Date Data Obtained	Date Data Obtained	Date Data Obtained	Date Data Obtained
			Sample Code	Sample Code	Sample Code	Sample Code
Alkalinity (as calcium carbonate)	mg/L	Quarterly	190			
Aluminium	mg/L	Yearly				
Ammonia	mg/L	Quarterly	<0.01			
Arsenic	mg/L	Yearly				
Barium	mg/L	Yearly				
Benzene	mg/L	Yearly				
Biochemical oxygen demand	mg/L	Yearly				
Cadmium	mg/L	Yearly				
Calcium	mg/L	Quarterly	36			
Carbonate	mg/L	Quarterly	<1			
Chemical oxygen demand	mg/L	Yearly				
Chloride	mg/L	Quarterly	46			
Chlorinated volatile compound	mg/L	Yearly				
Chromium (hexavalent)	mg/L	Yearly				
Cobalt	mg/L	Yearly				
Conductivity	µS/cm	Quarterly	510			
Copper	mg/L	Yearly				
Ethyl benzene	mg/L	Yearly				
Fluoride	mg/L	Yearly				
Lead	mg/L	Yearly				
Magnesium	mg/L	Quarterly	13			
Manganese	mg/L	Yearly				
Mercury	mg/L	Yearly				
Nitrogen Oxides	mg/L	Yearly				
Organochlorine pesticides	mg/L	Yearly				
Organophosphate pesticides	mg/L	Yearly				
pH	pH	Quarterly	-			
Phosphate	mg/L	Yearly				
Phosphorus (Total)	mg/L	Quarterly	0.11			
Potassium	mg/L	Quarterly	0.2			
Salinity	mg/L	Quarterly	330			
Sodium	mg/L	Quarterly	42			
Sulfate	mg/L	Quarterly	17			
Toluene	mg/L	Yearly				
Total chromium	mg/L	Yearly				
Total dissolved solids	mg/L	Quarterly	340			
Total organic carbon	mg/L	Yearly				
Total petroleum hydrocarbons C6-C9	mg/L	Yearly				
C10-C14	mg/L	Yearly				
C15-C28	mg/L	Yearly				
C29-C36	mg/L	Yearly				
C10-C36 (Sum)	mg/L	Yearly				
Total Phenolics	mg/L	Yearly				
Xylene	mg/L	Yearly				
Zinc	mg/L	Yearly				

Waste Management Facility - 5293

Monitoring Point 11 - GWM7

Pollutant	Unit	Monitoring frequency	Date Sampled	Date Sampled	Date Sampled	Date Sampled
			24.11.2024			
			Date Data Obtained	Date Data Obtained	Date Data Obtained	Date Data Obtained
			Sample Code	Sample Code	Sample Code	Sample Code
Alkalinity (as calcium carbonate)	mg/L	Quarterly	210			
Aluminium	mg/L	Yearly				
Ammonia	mg/L	Quarterly	0.02			
Arsenic	mg/L	Yearly				
Barium	mg/L	Yearly				
Benzene	mg/L	Yearly				
Biochemical oxygen demand	mg/L	Yearly				
Cadmium	mg/L	Yearly				
Calcium	mg/L	Quarterly	40			
Carbonate	mg/L	Quarterly	<1			
Chemical oxygen demand	mg/L	Yearly				
Chloride	mg/L	Quarterly	3900			
Chlorinated volatile compound	mg/L	Yearly				
Chromium (hexavalent)	mg/L	Yearly				
Cobalt	mg/L	Yearly				
Conductivity	µS/cm	Quarterly	10000			
Copper	mg/L	Yearly				
Ethyl benzene	mg/L	Yearly				
Fluoride	mg/L	Yearly				
Lead	mg/L	Yearly				
Magnesium	mg/L	Quarterly	180			
Manganese	mg/L	Yearly				
Mercury	mg/L	Yearly				
Nitrogen Oxides	mg/L	Yearly				
Organochlorine pesticides	mg/L	Yearly				
Organophosphate pesticides	mg/L	Yearly				
pH	pH	Quarterly	-			
Phosphate	mg/L	Yearly				
Phosphorus (Total)	mg/L	Quarterly	1.3			
Potassium	mg/L	Quarterly	0.4			
Salinity	mg/L	Quarterly	6600			
Sodium	mg/L	Quarterly	1900			
Sulfate	mg/L	Quarterly	100			
Toluene	mg/L	Yearly				
Total chromium	mg/L	Yearly				
Total dissolved solids	mg/L	Quarterly	6700			
Total organic carbon	mg/L	Yearly				
Total petroleum hydrocarbons C6-C9	mg/L	Yearly				
C10-C14	mg/L	Yearly				
C15-C28	mg/L	Yearly				
C29-C36	mg/L	Yearly				
C10-C36 (Sum)	mg/L	Yearly				
Total Phenolics	mg/L	Yearly				
Xylene	mg/L	Yearly				
Zinc	mg/L	Yearly				

Waste Management Facility - 5293

Monitoring Point 12 - GWM8

Pollutant	Unit	Monitoring frequency	Date Sampled	Date Sampled	Date Sampled	Date Sampled
			24.11.2024			
			Date Data Obtained	Date Data Obtained	Date Data Obtained	Date Data Obtained
			Sample Code	Sample Code	Sample Code	Sample Code
Alkalinity (as calcium carbonate)	mg/L	Quarterly	540			
Aluminium	mg/L	Yearly				
Ammonia	mg/L	Quarterly	0.23			
Arsenic	mg/L	Yearly				
Barium	mg/L	Yearly				
Benzene	mg/L	Yearly				
Biochemical oxygen demand	mg/L	Yearly				
Cadmium	mg/L	Yearly				
Calcium	mg/L	Quarterly	130			
Carbonate	mg/L	Quarterly	<1			
Chemical oxygen demand	mg/L	Yearly				
Chloride	mg/L	Quarterly	6200			
Chlorinated volatile compound	mg/L	Yearly				
Chromium (hexavalent)	mg/L	Yearly				
Cobalt	mg/L	Yearly				
Conductivity	µS/cm	Quarterly	15000			
Copper	mg/L	Yearly				
Ethyl benzene	mg/L	Yearly				
Fluoride	mg/L	Yearly				
Lead	mg/L	Yearly				
Magnesium	mg/L	Quarterly	390			
Manganese	mg/L	Yearly				
Mercury	mg/L	Yearly				
Nitrogen Oxides	mg/L	Yearly				
Organochlorine pesticides	mg/L	Yearly				
Organophosphate pesticides	mg/L	Yearly				
pH	pH	Quarterly	-			
Phosphate	mg/L	Yearly				
Phosphorus (Total)	mg/L	Quarterly	4.7			
Potassium	mg/L	Quarterly	2.7			
Salinity	mg/L	Quarterly	9500			
Sodium	mg/L	Quarterly	2700			
Sulfate	mg/L	Quarterly	240			
Toluene	mg/L	Yearly				
Total chromium	mg/L	Yearly				
Total dissolved solids	mg/L	Quarterly	10000			
Total organic carbon	mg/L	Yearly				
Total petroleum hydrocarbons C6-C9	mg/L	Yearly				
C10-C14	mg/L	Yearly				
C15-C28	mg/L	Yearly				
C29-C36	mg/L	Yearly				
C10-C36 (Sum)	mg/L	Yearly				
Total Phenolics	mg/L	Yearly				
Xylene	mg/L	Yearly				
Zinc	mg/L	Yearly				

Waste Management Facility - 5293

Monitoring Point 13 - GWM9

Pollutant	Unit	Monitoring frequency	Date Sampled	Date Sampled	Date Sampled	Date Sampled
			24.11.2024			
			Date Data Obtained	Date Data Obtained	Date Data Obtained	Date Data Obtained
			Sample Code	Sample Code	Sample Code	Sample Code
Alkalinity (as calcium carbonate)	mg/L	Quarterly	160			
Aluminium	mg/L	Yearly				
Ammonia	mg/L	Quarterly	0.17			
Arsenic	mg/L	Yearly				
Barium	mg/L	Yearly				
Benzene	mg/L	Yearly				
Biochemical oxygen demand	mg/L	Yearly				
Cadmium	mg/L	Yearly				
Calcium	mg/L	Quarterly	39			
Carbonate	mg/L	Quarterly	<1			
Chemical oxygen demand	mg/L	Yearly				
Chloride	mg/L	Quarterly	2000			
Chlorinated volatile compound	mg/L	Yearly				
Chromium (hexavalent)	mg/L	Yearly				
Cobalt	mg/L	Yearly				
Conductivity	µS/cm	Quarterly	5700			
Copper	mg/L	Yearly				
Ethyl benzene	mg/L	Yearly				
Fluoride	mg/L	Yearly				
Lead	mg/L	Yearly				
Magnesium	mg/L	Quarterly	100			
Manganese	mg/L	Yearly				
Mercury	mg/L	Yearly				
Nitrogen Oxides	mg/L	Yearly				
Organochlorine pesticides	mg/L	Yearly				
Organophosphate pesticides	mg/L	Yearly				
pH	pH	Quarterly	-			
Phosphate	mg/L	Yearly				
Phosphorus (Total)	mg/L	Quarterly	0.76			
Potassium	mg/L	Quarterly	7.8			
Salinity	mg/L	Quarterly	3700			
Sodium	mg/L	Quarterly	1300			
Sulfate	mg/L	Quarterly	80			
Toluene	mg/L	Yearly				
Total chromium	mg/L	Yearly				
Total dissolved solids	mg/L	Quarterly	3400			
Total organic carbon	mg/L	Yearly				
Total petroleum hydrocarbons C6-C9	mg/L	Yearly				
C10-C14	mg/L	Yearly				
C15-C28	mg/L	Yearly				
C29-C36	mg/L	Yearly				
C10-C36 (Sum)	mg/L	Yearly				
Total Phenolics	mg/L	Yearly				
Xylene	mg/L	Yearly				
Zinc	mg/L	Yearly				

Pollutant Monitoring - Correction Log

EPL No: 5293

Sample Point	Pollutant	Sample Date and Time	Original Data	Corrected Data	Date Originally Published	Reason