



Attachment 2 to Item 072

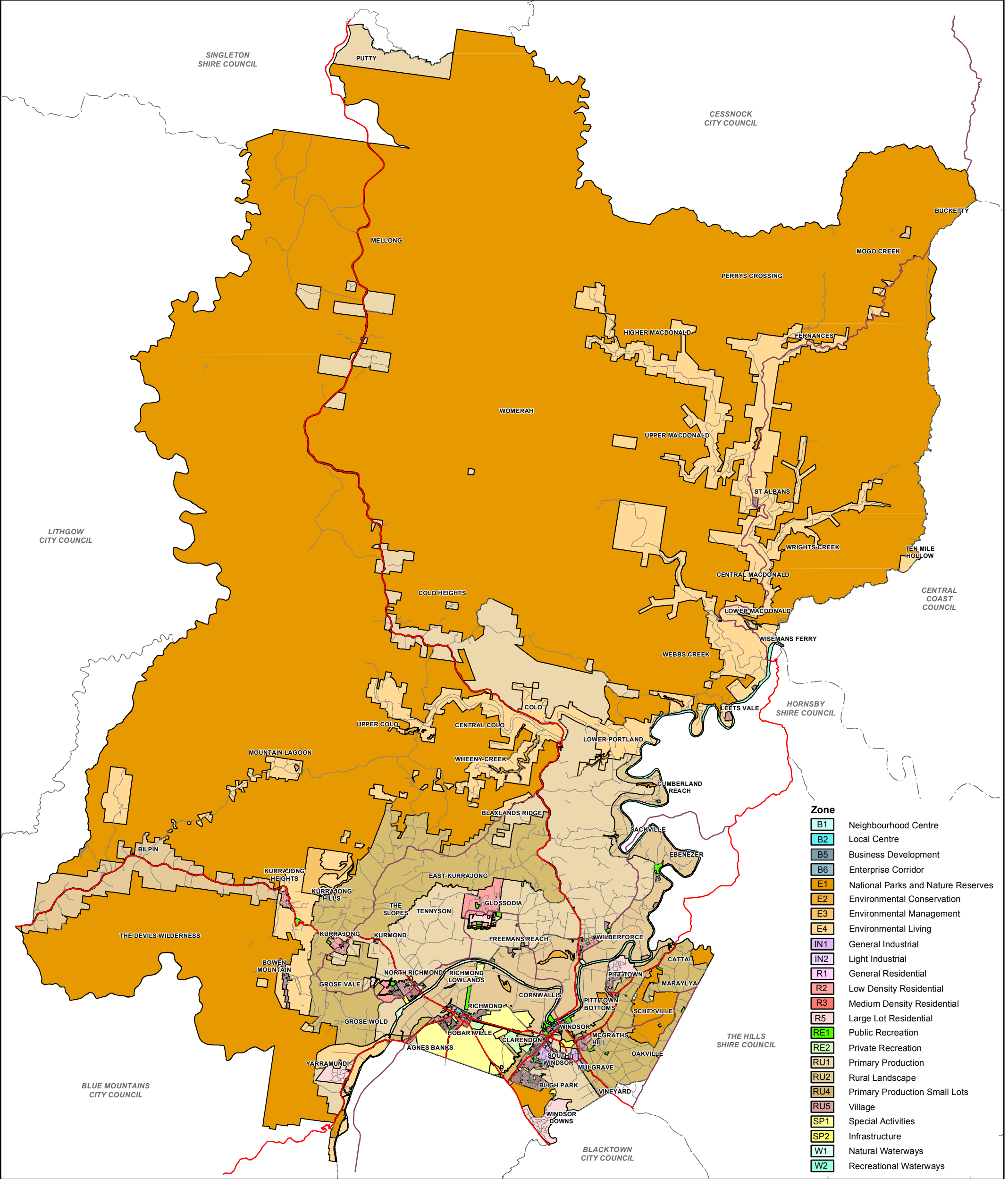
Hawkesbury Local Environment Plan 2012 - Zoning

Date of meeting: 12 April 2022
Location: Council Chambers
Time: 6:30 p.m.

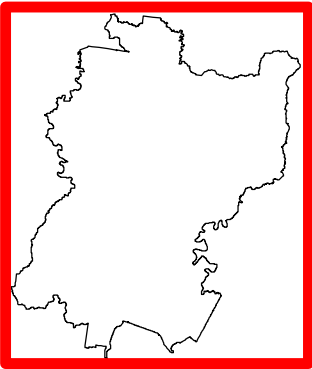


HAWKESBURY CITY COUNCIL

PO Box 146, Windsor NSW 2756
Website: www.hawkesbury.nsw.gov.au
Email: council@hawkesbury.nsw.gov.au
Hours: Monday to Friday 8.30am - 5pm
Phone: (02) 4560 4444



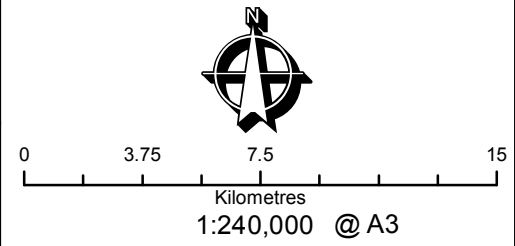
- Zone**
- B1 Neighbourhood Centre
 - B2 Local Centre
 - B5 Business Development
 - B6 Enterprise Corridor
 - E1 National Parks and Nature Reserves
 - E2 Environmental Conservation
 - E3 Environmental Management
 - E4 Environmental Living
 - IN1 General Industrial
 - IN2 Light Industrial
 - R1 General Residential
 - R2 Low Density Residential
 - R3 Medium Density Residential
 - R5 Large Lot Residential
 - RE1 Public Recreation
 - RE2 Private Recreation
 - RU1 Primary Production
 - RU2 Rural Landscape
 - RU4 Primary Production Small Lots
 - RU5 Village
 - SP1 Special Activities
 - SP2 Infrastructure
 - W1 Natural Waterways
 - W2 Recreational Waterways



HAWKESBURY LOCAL ENVIRONMENTAL PLAN 2012

Date: 15/06/2018

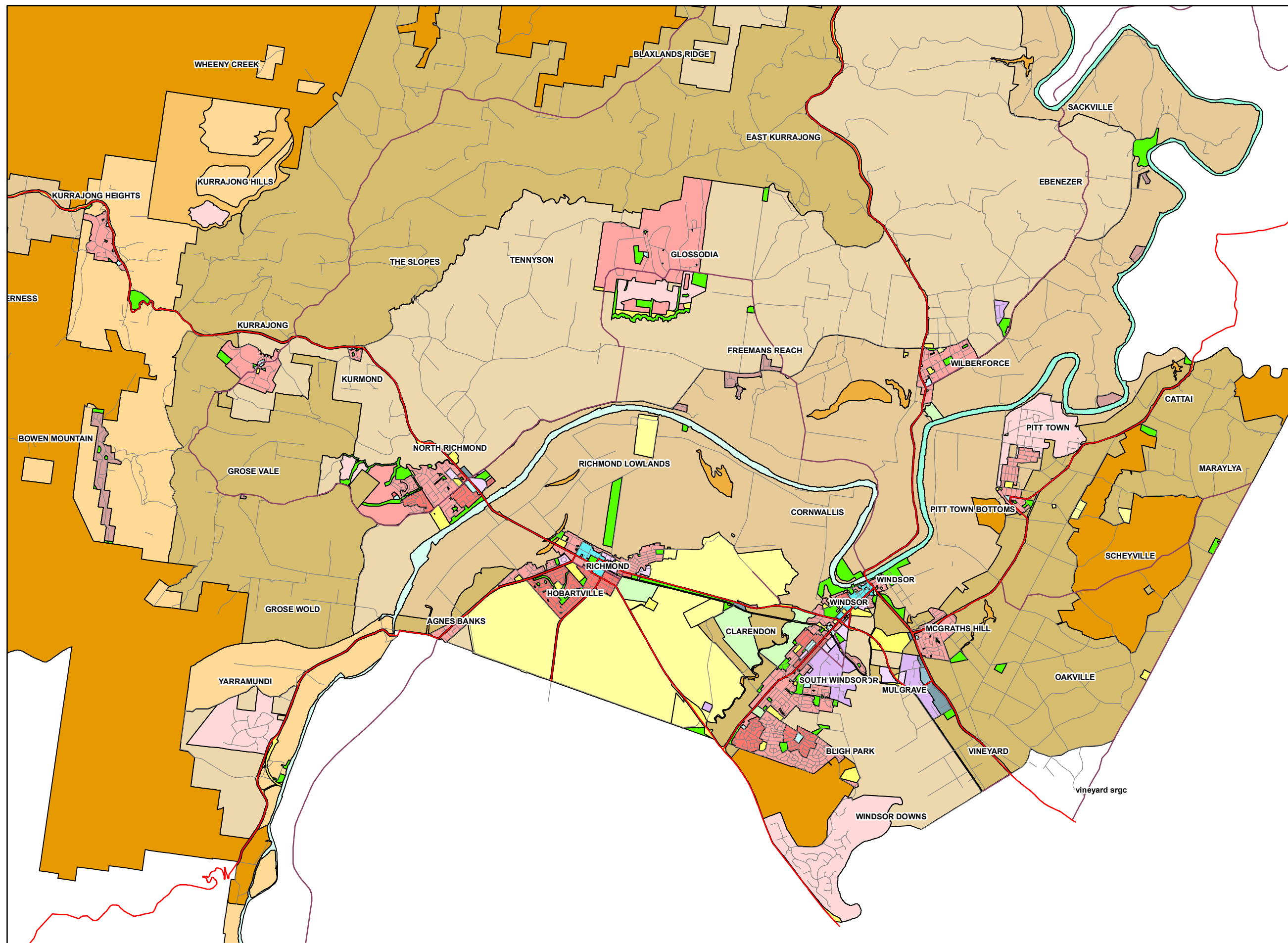
This map cannot be reproduced without the permission of Hawkesbury City Council
Copyright © Department Finance, Service & Innovation - Spatial Services 2018
Hawkesbury City Council 2018
The scale displayed is approximate only. Hawkesbury City Council takes no responsibility for any errors or omissions. The assets shown on this map indicate the presence and general location only. Its accuracy or completeness is not guaranteed. Contours are to be used as a guide. A survey may be required for more accuracy.



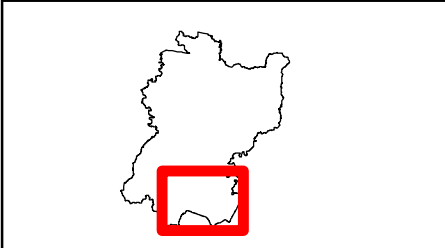
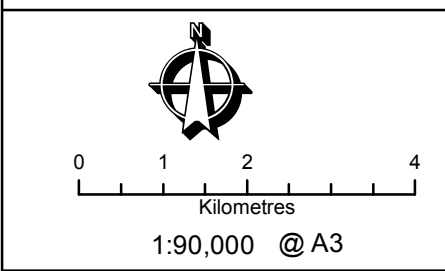


HAWKESBURY CITY COUNCIL

PO Box 146, Windsor NSW 2756
Website: www.hawkesbury.nsw.gov.au
Email: council@hawkesbury.nsw.gov.au
Hours: Monday to Friday 8.30am - 5pm
Phone: (02) 4560 4444



Zone	
B1	Neighbourhood Centre
B2	Local Centre
B5	Business Development
B6	Enterprise Corridor
E1	National Parks and Nature Reserves
E2	Environmental Conservation
E3	Environmental Management
E4	Environmental Living
IN1	General Industrial
IN2	Light Industrial
R1	General Residential
R2	Low Density Residential
R3	Medium Density Residential
R5	Large Lot Residential
RE1	Public Recreation
RE2	Private Recreation
RU1	Primary Production
RU2	Rural Landscape
RU4	Primary Production Small Lots
RU5	Village
SP1	Special Activities
SP2	Infrastructure
W1	Natural Waterways
W2	Recreational Waterways



This map cannot be reproduced without the permission of Hawkesbury City Council

Copyright © Department Finance, Service & Innovation - Spatial Services 2018
Hawkesbury City Council 2018

The scale displayed is approximate only. Hawkesbury City Council takes no responsibility for any errors or omissions. The assets shown on this map indicate the presence and general location only. Its accuracy or completeness is not guaranteed. Contours are to be used as a guide. A survey may be required for more accuracy.