

Hawkesbury Waste Management Facility - Yearly Summary for 2024-25 (commencing September 2024)

Licence number - 5293

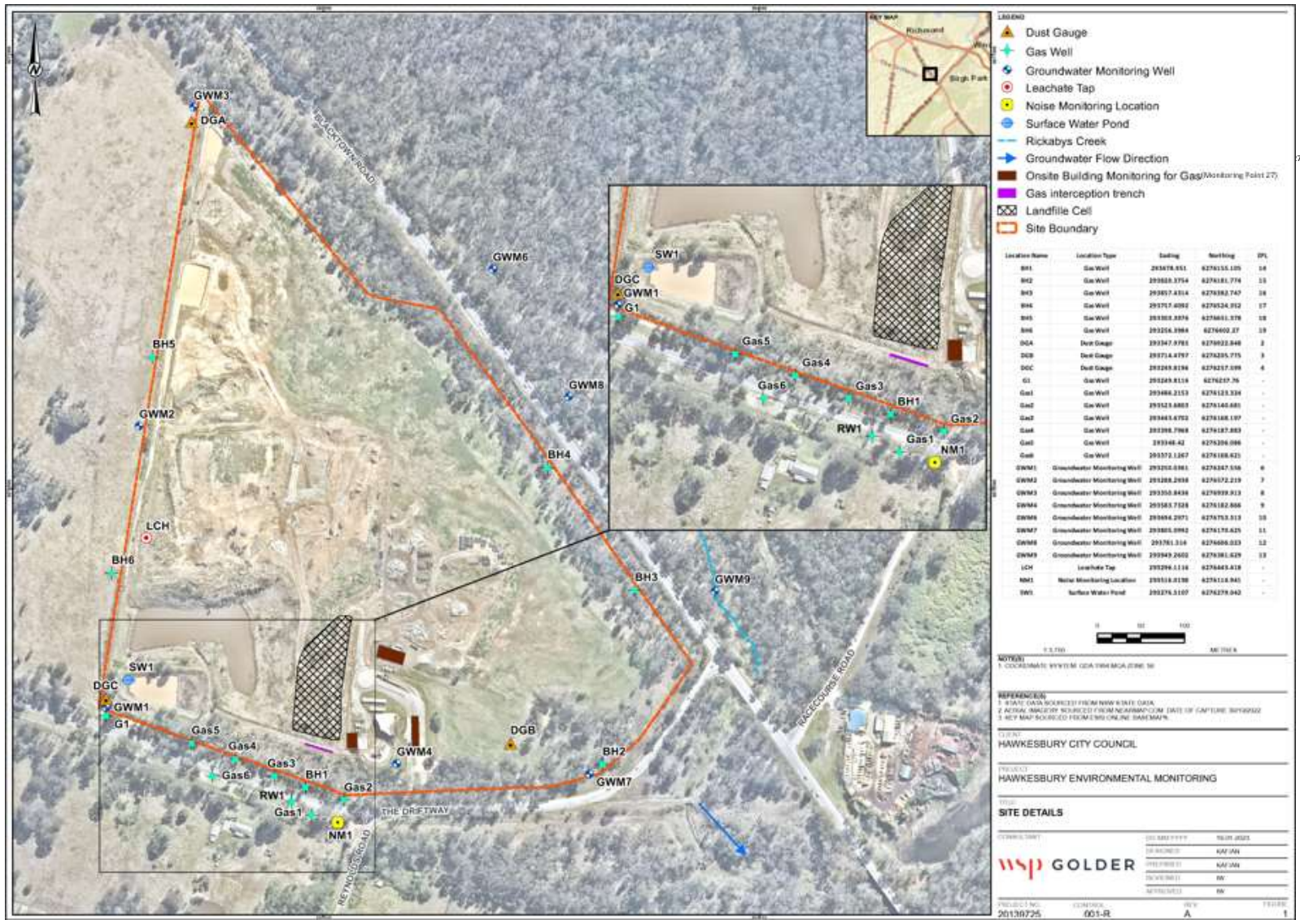
Hawkesbury Waste Management Facility - The Driftway, South WindsorNSW 2756 Licencee - Hawkesbury City Council

Public Register : <https://www.epa.nsw.gov.au/licensing-and-regulation/public-registers>

Licence Period - 25th July - 24th July

LOR = Limit of Reporting

NT = Not Tested



Waste Management Facility - 5293

Monitoring Point 14 - BH1

Pollutant	Unit	Monitoring Frequency	Date Sampled	Date Sampled	Date Sampled	Date Sampled	Date Sampled	Date Sampled
			30.09.2024					
			Date Obtained	Date Obtained	Date Obtained	Date Obtained	Date Obtained	Date Obtained
Sample Code	Sample Code	Sample Code	Sample Code	Sample Code	Sample Code			
Carbon Dioxide	% v/v	Monthly	0.5					
Methane	% v/v	Monthly	0					

Date Sampled	Date Sampled	Date Sampled	Date Sampled	Date Sampled	Date Sampled
Date Obtained	Date Obtained	Date Obtained	Date Obtained	Date Obtained	Date Obtained
Sample Code	Sample Code	Sample Code	Sample Code	Sample Code	Sample Code
Carbon Dioxide	% v/v	Monthly			
Methane	% v/v	Monthly			

Monitoring Point 15 - BH2

Pollutant	Unit	Monitoring Frequency	Date Sampled	Date Sampled
			Date Obtained	Date Obtained
Sample Code	Sample Code			
Carbon Dioxide	% v/v	Every 6 Months		
Methane	% v/v	Every 6 Months		

Monitoring Point 16 - BH3

Pollutant	Unit	Monitoring Frequency	Date Sampled	Date Sampled
			Date Obtained	Date Obtained
Sample Code	Sample Code			
Carbon Dioxide	% v/v	Every 6 Months		
Methane	% v/v	Every 6 Months		

Waste Management Facility - 5293

Monitoring Point 17 - BH4

Pollutant	Unit	Monitoring Frequency	Date Sampled	Date Sampled
			Date Obtained	Date Obtained
Sample Code	Sample Code			
Carbon Dioxide	% v/v	Every 6 Months		
Methane	% v/v	Every 6 Months		

Monitoring Point 18 - BH5

Pollutant	Unit	Monitoring Frequency	Date Sampled	Date Sampled	Date Sampled	Date Sampled	Date Sampled	Date Sampled
			30.09.2024					
			Date Obtained	Date Obtained	Date Obtained	Date Obtained	Date Obtained	Date Obtained
Sample Code	Sample Code	Sample Code	Sample Code	Sample Code	Sample Code			
Carbon Dioxide	% v/v	Monthly	0.3					
Methane	% v/v	Monthly	0					

Date Sampled	Date Sampled	Date Sampled	Date Sampled	Date Sampled	Date Sampled
Date Obtained	Date Obtained	Date Obtained	Date Obtained	Date Obtained	Date Obtained
Sample Code	Sample Code	Sample Code	Sample Code	Sample Code	Sample Code
Carbon Dioxide	% v/v	Monthly			
Methane	% v/v	Monthly			

Monitoring Point 19 - BH6

Pollutant	Unit	Monitoring Frequency	Date Sampled	Date Sampled	Date Sampled	Date Sampled	Date Sampled	Date Sampled
			30.09.2024					
			Date Obtained	Date Obtained	Date Obtained	Date Obtained	Date Obtained	Date Obtained
Sample Code	Sample Code	Sample Code	Sample Code	Sample Code	Sample Code			
Carbon Dioxide	% v/v	Monthly	0.2					
Methane	% v/v	Monthly	0					

Waste Management Facility - 5293

			Date Sampled	Date Sampled	Date Sampled	Date Sampled	Date Sampled	Date Sampled
			Date Obtained	Date Obtained	Date Obtained	Date Obtained	Date Obtained	Date Obtained
			Sample Code	Sample Code	Sample Code	Sample Code	Sample Code	Sample Code
Carbon Dioxide	% v/v	Monthly						
Methane	% v/v	Monthly						

Monitoring Point 20 - G1

Pollutant	Unit	Monitoring Frequency	Date Sampled	Date Sampled	Date Sampled	Date Sampled	Date Sampled	Date Sampled	
			30.09.2024						
			Date Obtained	Date Obtained	Date Obtained	Date Obtained	Date Obtained	Date Obtained	
			Sample Code	Sample Code	Sample Code	Sample Code	Sample Code	Sample Code	
Carbon Dioxide	% v/v	Monthly	0.3						
Methane	% v/v	Monthly	0						

			Date Sampled	Date Sampled	Date Sampled	Date Sampled	Date Sampled	Date Sampled
			Date Obtained	Date Obtained	Date Obtained	Date Obtained	Date Obtained	Date Obtained
			Sample Code	Sample Code	Sample Code	Sample Code	Sample Code	Sample Code
Carbon Dioxide	% v/v	Monthly						
Methane	% v/v	Monthly						

Point 21 - Gas2

Pollutant	Unit	Monitoring Frequency	Date Sampled	Date Sampled	Date Sampled	Date Sampled	Date Sampled	Date Sampled
			30.09.2024					
			Date Obtained	Date Obtained	Date Obtained	Date Obtained	Date Obtained	Date Obtained
			Sample Code	Sample Code	Sample Code	Sample Code	Sample Code	Sample Code
Carbon Dioxide	% v/v	Monthly	0.3					
Methane	% v/v	Monthly	0					

Waste Management Facility - 5293

			Date Sampled	Date Sampled	Date Sampled	Date Sampled	Date Sampled	Date Sampled
			Date Obtained	Date Obtained	Date Obtained	Date Obtained	Date Obtained	Date Obtained
			Sample Code	Sample Code	Sample Code	Sample Code	Sample Code	Sample Code
Carbon Dioxide	% v/v	Monthly						
Methane	% v/v	Monthly						

Point 22 - Gas3

Pollutant	Unit	Monitoring Frequency	Date Sampled	Date Sampled	Date Sampled	Date Sampled	Date Sampled	Date Sampled
			30.09.2024					
			Date Obtained	Date Obtained	Date Obtained	Date Obtained	Date Obtained	Date Obtained
			Sample Code	Sample Code	Sample Code	Sample Code	Sample Code	Sample Code
Carbon Dioxide	% v/v	Monthly	0.6					
Methane	% v/v	Monthly	0					

			Date Sampled	Date Sampled	Date Sampled	Date Sampled	Date Sampled	Date Sampled
			Date Obtained	Date Obtained	Date Obtained	Date Obtained	Date Obtained	Date Obtained
			Sample Code	Sample Code	Sample Code	Sample Code	Sample Code	Sample Code
Carbon Dioxide	% v/v	Monthly						
Methane	% v/v	Monthly						

Point 23 - Gas4

Pollutant	Unit	Monitoring Frequency	Date Sampled	Date Sampled	Date Sampled	Date Sampled	Date Sampled	Date Sampled
			30.09.2024					
			Date Obtained	Date Obtained	Date Obtained	Date Obtained	Date Obtained	Date Obtained
			Sample Code	Sample Code	Sample Code	Sample Code	Sample Code	Sample Code
Carbon Dioxide	% v/v	Monthly	3.8					
Methane	% v/v	Monthly	0					

Waste Management Facility - 5293

			Date Sampled	Date Sampled	Date Sampled	Date Sampled	Date Sampled	Date Sampled
			Date Obtained	Date Obtained	Date Obtained	Date Obtained	Date Obtained	Date Obtained
			Sample Code	Sample Code	Sample Code	Sample Code	Sample Code	Sample Code
Carbon Dioxide	% v/v	Monthly						
Methane	% v/v	Monthly						

Point 24- Gas 6

Pollutant	Unit	Monitoring Frequency	Date Sampled	Date Sampled	Date Sampled	Date Sampled	Date Sampled	Date Sampled
			Date Obtained	Date Obtained	Date Obtained	Date Obtained	Date Obtained	Date Obtained
			30.09.2024					
			Sample Code	Sample Code	Sample Code	Sample Code	Sample Code	Sample Code
Carbon Dioxide	% v/v	Monthly	3.6					
Methane	% v/v	Monthly	0					

			Date Sampled	Date Sampled	Date Sampled	Date Sampled	Date Sampled	Date Sampled
			Date Obtained	Date Obtained	Date Obtained	Date Obtained	Date Obtained	Date Obtained
			Sample Code	Sample Code	Sample Code	Sample Code	Sample Code	Sample Code
Carbon Dioxide	% v/v	Monthly						
Methane	% v/v	Monthly						

Point 25 - Gas interception trench

Pollutant	Unit	Monitoring Frequency	Date Sampled	Date Sampled	Date Sampled	Date Sampled	Date Sampled	Date Sampled
			30.09.2024					
			Date Obtained	Date Obtained	Date Obtained	Date Obtained	Date Obtained	Date Obtained
			Sample Code	Sample Code	Sample Code	Sample Code	Sample Code	Sample Code
Carbon Dioxide	% v/v	Monthly	0					
Methane	% v/v	Monthly	0					

Waste Management Facility - 5293

			Date Sampled	Date Sampled	Date Sampled	Date Sampled	Date Sampled	Date Sampled
			Date Obtained	Date Obtained	Date Obtained	Date Obtained	Date Obtained	Date Obtained
			Sample Code	Sample Code	Sample Code	Sample Code	Sample Code	Sample Code
Carbon Dioxide	% v/v	Monthly						
Methane	% v/v	Monthly						

RW1

Pollutant	Unit	Monitoring Frequency	Date Sampled	Date Sampled	Date Sampled	Date Sampled	Date Sampled	Date Sampled	
			30.09.2024						
			Date Obtained	Date Obtained	Date Obtained	Date Obtained	Date Obtained	Date Obtained	
			Sample Code	Sample Code	Sample Code	Sample Code	Sample Code	Sample Code	
Carbon Dioxide	% v/v	Monthly	5.4						
Methane	% v/v	Monthly	0						

			Date Sampled	Date Sampled	Date Sampled	Date Sampled	Date Sampled	Date Sampled
			Date Obtained	Date Obtained	Date Obtained	Date Obtained	Date Obtained	Date Obtained
			Sample Code	Sample Code	Sample Code	Sample Code	Sample Code	Sample Code
Carbon Dioxide	% v/v	Monthly						
Methane	% v/v	Monthly						

Gas1

Waste Management Facility - 5293

Pollutant	Unit	Monitoring Frequency	Date Sampled	Date Sampled	Date Sampled	Date Sampled	Date Sampled	Date Sampled	
			30.09.2024						
			Date Obtained	Date Obtained	Date Obtained	Date Obtained	Date Obtained	Date Obtained	
Sample Code	Sample Code	Sample Code	Sample Code	Sample Code	Sample Code				
Carbon Dioxide	% v/v	Monthly	4.1						
Methane	% v/v	Monthly	0						

Date Sampled	Date Sampled	Date Sampled	Date Sampled	Date Sampled	Date Sampled
Date Obtained	Date Obtained	Date Obtained	Date Obtained	Date Obtained	Date Obtained
Sample Code	Sample Code	Sample Code	Sample Code	Sample Code	Sample Code
Carbon Dioxide	% v/v	Monthly			
Methane	% v/v	Monthly			

Gas5

Pollutant	Unit	Monitoring Frequency	Date Sampled	Date Sampled	Date Sampled	Date Sampled	Date Sampled	Date Sampled
			30.09.2024					
			Date Obtained	Date Obtained	Date Obtained	Date Obtained	Date Obtained	Date Obtained
Sample Code	Sample Code	Sample Code	Sample Code	Sample Code	Sample Code			
Carbon Dioxide	% v/v	Monthly	5.6					
Methane	% v/v	Monthly	0					

Date Sampled	Date Sampled	Date Sampled	Date Sampled	Date Sampled	Date Sampled
Date Obtained	Date Obtained	Date Obtained	Date Obtained	Date Obtained	Date Obtained
Sample Code	Sample Code	Sample Code	Sample Code	Sample Code	Sample Code
Carbon Dioxide	% v/v	Monthly			
Methane	% v/v	Monthly			

Point 27 - Inside all buildings	Unit	Monitoring Frequency	Date Sampled	Date Sampled	Date Sampled	Date Sampled
			Date Data Obtained	Date Data Obtained	Date Data Obtained	Date Data Obtained
Sample Code	Sample Code	Sample Code	Sample Code			
HCC Lunch Room Demountable						
Methane	% v/v	Quarterly				
HCC Toliet Demountable						
Methane	% v/v	Quarterly				
Recycling Shed						
Methane	% v/v	Quarterly				
Gatehouse/ Weighbridge						
Methane	% v/v	Quarterly				
Tools Storage Shed						
Methane	% v/v	Quarterly				
Equipment Shed						
Methane	% v/v	Quarterly				

Waste Management Facility - 5293

Monitoring Point 2 - DGA

Pollutant	Unit	Monitoring Frequency	Start Date	Start Date	Start Date	Start Date
			Data Collection Date	Data Collection Date	Data Collection Date	Data Collection Date
Sample Code	Sample Code	Sample Code	Sample Code			
Particulates deposited Matter	g/m ² /month	Quarterly				

Monitoring Point 3 - DGB

Pollutant	Unit	Monitoring Frequency	Start Date	Start Date	Start Date	Start Date
			Data Collection Date	Data Collection Date	Data Collection Date	Data Collection Date
Sample Code	Sample Code	Sample Code	Sample Code			
Particulates deposited Matter	g/m ² /month	Quarterly				

Monitoring Point 4 - DGC

Pollutant	Unit	Monitoring Frequency	Start Date	Start Date	Start Date	Start Date
			Data Collection Date	Data Collection Date	Data Collection Date	Data Collection Date
Sample Code	Sample Code	Sample Code	Sample Code			
Particulates deposited Matter	g/m ² /month	Quarterly				

Waste Management Facility - 5293

Monitoring Point 1 - LCH

Pollutant	Unit	Monitoring Frequency	Date Sampled	Date Sampled	Date Sampled	Date Sampled
			Date Data Obtained	Date Data Obtained	Date Data Obtained	Date Data Obtained
			Sample Code	Sample Code	Sample Code	Sample Code
Alkalinity (as calcium carbonate)	mg/L	Quarterly				
Aluminium	mg/L	Yearly				
Arsenic	mg/L	Yearly				
Barium	mg/L	Yearly				
Benzene	mg/L	Yearly				
Biochemical oxygen demand	mg/L	Yearly				
Cadmium	mg/L	Yearly				
Calcium	mg/L	Quarterly				
Chemical oxygen demand	mg/L	Yearly				
Chloride	mg/L	Quarterly				
Chromium (hexavalent)	mg/L	Yearly				
Cobalt	mg/L	Yearly				
Conductivity	µS/cm	Quarterly				
Copper	mg/L	Yearly				
Ethyl benzene	mg/L	Yearly				
Fluoride	mg/L	Yearly				
Lead	mg/L	Yearly				
Magnesium	mg/L	Quarterly				
Manganese	mg/L	Yearly				
Mercury	mg/L	Yearly				
Nitrate	mg/L	Quarterly				
Nitrite	mg/L	Quarterly				
Nitrogen (ammonia)	mg/L	Quarterly				
Organochlorine pesticides	mg/L	Yearly				
Orgnochlorine pesticides	mg/L	Yearly				
pH	pH	Quarterly				
Phosphate	mg/L	Yearly				
Phosphorus (total)	mg/L	Quarterly				
Potassium	mg/L	Quarterly				
Sodium	mg/L	Quarterly				
Sulfate	mg/L	Quarterly				
Toluene	mg/L	Yearly				
Total chromium	mg/L	Yearly				
Total dissolved solids	mg/L	Quarterly				
Total Iron	mg/L	Yearly				
Total organic carbon	mg/L	Yearly				
Total petroleum hydrocarbons C6-C9	mg/L	Yearly				
C10-C14	mg/L	Yearly				
C15-C28	mg/L	Yearly				
C29-C36	mg/L	Yearly				
C10-C36 (Sum)	mg/L	Yearly				
Total Phenolics	mg/L	Yearly				
Xylene	mg/L	Yearly				
Zinc	mg/L	Yearly				

Waste Management Facility - 5293

Monitoring Point 5 - SW1

Pollutant	Unit	Monitoring Frequency	Date Sampled	Date Sampled	Date Sampled	Date Sampled
			Date Data Obtained	Date Data Obtained	Date Data Obtained	Date Data Obtained
Sample Code	Sample Code	Sample Code	Sample Code			
Alkalinity (as calcium carbonate)	mg/L	Quarterly				
Ammonia	mg/L	Quarterly				
Biochemical oxygen demand	mg/L	Quarterly				
Sulfate	mg/L	Quarterly				
Total Phenolics	mg/L	Yearly				

Waste Management Facility - 5293

Monitoring Point 6 - GWM1

Pollutant	Unit	Monitoring frequency	Date Sampled	Date Sampled	Date Sampled	Date Sampled
			Date Data Obtained	Date Data Obtained	Date Data Obtained	Date Data Obtained
			Sample Code	Sample Code	Sample Code	Sample Code
Alkalinity (as calcium carbonate)	mg/L	Quarterly				
Aluminium	mg/L	Yearly				
Ammonia	mg/L	Quarterly				
Arsenic	mg/L	Yearly				
Barium	mg/L	Yearly				
Benzene	mg/L	Yearly				
Biochemical oxygen demand	mg/L	Yearly				
Cadmium	mg/L	Yearly				
Calcium	mg/L	Quarterly				
Carbonate	mg/L	Quarterly				
Chemical oxygen demand	mg/L	Yearly				
Chloride	mg/L	Quarterly				
Chlorinated volatile compound	mg/L	Yearly				
Chromium (hexavalent)	mg/L	Yearly				
Cobalt	mg/L	Yearly				
Conductivity	µS/cm	Quarterly				
Copper	mg/L	Yearly				
Ethyl benzene	mg/L	Yearly				
Fluoride	mg/L	Yearly				
Lead	mg/L	Yearly				
Magnesium	mg/L	Quarterly				
Manganese	mg/L	Yearly				
Mercury	mg/L	Yearly				
Nitrogen Oxides	mg/L	Yearly				
Organochlorine pesticides	mg/L	Yearly				
Organophosphate pesticides	mg/L	Yearly				
pH	pH	Quarterly				
Phosphate	mg/L	Yearly				
Phosphorus (Total)	mg/L	Quarterly				
Potassium	mg/L	Quarterly				
Salinity	mg/L	Quarterly				
Sodium	mg/L	Quarterly				
Sulfate	mg/L	Quarterly				
Toluene	mg/L	Yearly				
Total chromium	mg/L	Yearly				
Total dissolved solids	mg/L	Quarterly				
Total organic carbon	mg/L	Yearly				
Total petroleum hydrocarbons C6-C9	mg/L	Yearly				
C10-C14	mg/L	Yearly				
C15-C28	mg/L	Yearly				
C29-C36	mg/L	Yearly				
C10-C36 (Sum)	mg/L	Yearly				
Total Phenolics	mg/L	Yearly				
Xylene	mg/L	Yearly				
Zinc	mg/L	Yearly				

Waste Management Facility - 5293

Monitoring Point 7 - GWM2

Pollutant	Unit	Monitoring frequency	Date Sampled	Date Sampled	Date Sampled	Date Sampled
			Date Data Obtained	Date Data Obtained	Date Data Obtained	Date Data Obtained
			Sample Code	Sample Code	Sample Code	Sample Code
Alkalinity (as calcium carbonate)	mg/L	Quarterly				
Aluminium	mg/L	Yearly				
Ammonia	mg/L	Quarterly				
Arsenic	mg/L	Yearly				
Barium	mg/L	Yearly				
Benzene	mg/L	Yearly				
Biochemical oxygen demand	mg/L	Yearly				
Cadmium	mg/L	Yearly				
Calcium	mg/L	Quarterly				
Carbonate	mg/L	Quarterly				
Chemical oxygen demand	mg/L	Yearly				
Chloride	mg/L	Quarterly				
Chlorinated volatile compound	mg/L	Yearly				
Chromium (hexavalent)	mg/L	Yearly				
Cobalt	mg/L	Yearly				
Conductivity	µS/cm	Quarterly				
Copper	mg/L	Yearly				
Ethyl benzene	mg/L	Yearly				
Fluoride	mg/L	Yearly				
Lead	mg/L	Yearly				
Magnesium	mg/L	Quarterly				
Manganese	mg/L	Yearly				
Mercury	mg/L	Yearly				
Nitrogen Oxides	mg/L	Yearly				
Organochlorine pesticides	mg/L	Yearly				
Organophosphate pesticides	mg/L	Yearly				
pH	pH	Quarterly				
Phosphate	mg/L	Yearly				
Phosphorus (Total)	mg/L	Quarterly				
Potassium	mg/L	Quarterly				
Salinity	mg/L	Quarterly				
Sodium	mg/L	Quarterly				
Sulfate	mg/L	Quarterly				
Toluene	mg/L	Yearly				
Total chromium	mg/L	Yearly				
Total dissolved solids	mg/L	Quarterly				
Total organic carbon	mg/L	Yearly				
Total petroleum hydrocarbons C6-C9	mg/L	Yearly				
C10-C14	mg/L	Yearly				
C15-C28	mg/L	Yearly				
C29-C36	mg/L	Yearly				
C10-C36 (Sum)	mg/L	Yearly				
Total Phenolics	mg/L	Yearly				
Xylene	mg/L	Yearly				
Zinc	mg/L	Yearly				

Waste Management Facility - 5293

Monitoring Point 8 - GWM3

Pollutant	Unit	Monitoring frequency	Date Sampled	Date Sampled	Date Sampled	Date Sampled
			Date Data Obtained	Date Data Obtained	Date Data Obtained	Date Data Obtained
			Sample Code	Sample Code	Sample Code	Sample Code
Alkalinity (as calcium carbonate)	mg/L	Quarterly				
Aluminium	mg/L	Yearly				
Ammonia	mg/L	Quarterly				
Arsenic	mg/L	Yearly				
Barium	mg/L	Yearly				
Benzene	mg/L	Yearly				
Biochemical oxygen demand	mg/L	Yearly				
Cadmium	mg/L	Yearly				
Calcium	mg/L	Quarterly				
Carbonate	mg/L	Quarterly				
Chemical oxygen demand	mg/L	Yearly				
Chloride	mg/L	Quarterly				
Chlorinated volatile compound	mg/L	Yearly				
Chromium (hexavalent)	mg/L	Yearly				
Cobalt	mg/L	Yearly				
Conductivity	µS/cm	Quarterly				
Copper	mg/L	Yearly				
Ethyl benzene	mg/L	Yearly				
Fluoride	mg/L	Yearly				
Lead	mg/L	Yearly				
Magnesium	mg/L	Quarterly				
Manganese	mg/L	Yearly				
Mercury	mg/L	Yearly				
Nitrogen Oxides	mg/L	Yearly				
Organochlorine pesticides	mg/L	Yearly				
Organophosphate pesticides	mg/L	Yearly				
pH	pH	Quarterly				
Phosphate	mg/L	Yearly				
Phosphorus (Total)	mg/L	Quarterly				
Potassium	mg/L	Quarterly				
Salinity	mg/L	Quarterly				
Sodium	mg/L	Quarterly				
Sulfate	mg/L	Quarterly				
Toluene	mg/L	Yearly				
Total chromium	mg/L	Yearly				
Total dissolved solids	mg/L	Quarterly				
Total organic carbon	mg/L	Yearly				
Total petroleum hydrocarbons C6-C9	mg/L	Yearly				
C10-C14	mg/L	Yearly				
C15-C28	mg/L	Yearly				
C29-C36	mg/L	Yearly				
C10-C36 (Sum)	mg/L	Yearly				
Total Phenolics	mg/L	Yearly				
Xylene	mg/L	Yearly				
Zinc	mg/L	Yearly				

Waste Management Facility - 5293

Monitoring Point 9 - GWM4

Pollutant	Unit	Monitoring frequency	Date Sampled	Date Sampled	Date Sampled	Date Sampled
			Date Data Obtained	Date Data Obtained	Date Data Obtained	Date Data Obtained
			Sample Code	Sample Code	Sample Code	Sample Code
Alkalinity (as calcium carbonate)	mg/L	Quarterly				
Aluminium	mg/L	Yearly				
Ammonia	mg/L	Quarterly				
Arsenic	mg/L	Yearly				
Barium	mg/L	Yearly				
Benzene	mg/L	Yearly				
Biochemical oxygen demand	mg/L	Yearly				
Cadmium	mg/L	Yearly				
Calcium	mg/L	Quarterly				
Carbonate	mg/L	Quarterly				
Chemical oxygen demand	mg/L	Yearly				
Chloride	mg/L	Quarterly				
Chlorinated volatile compound	mg/L	Yearly				
Chromium (hexavalent)	mg/L	Yearly				
Cobalt	mg/L	Yearly				
Conductivity	µS/cm	Quarterly				
Copper	mg/L	Yearly				
Ethyl benzene	mg/L	Yearly				
Fluoride	mg/L	Yearly				
Lead	mg/L	Yearly				
Magnesium	mg/L	Quarterly				
Manganese	mg/L	Yearly				
Mercury	mg/L	Yearly				
Nitrogen Oxides	mg/L	Yearly				
Organochlorine pesticides	mg/L	Yearly				
Organophosphate pesticides	mg/L	Yearly				
pH	pH	Quarterly				
Phosphate	mg/L	Yearly				
Phosphorus (Total)	mg/L	Quarterly				
Potassium	mg/L	Quarterly				
Salinity	mg/L	Quarterly				
Sodium	mg/L	Quarterly				
Sulfate	mg/L	Quarterly				
Toluene	mg/L	Yearly				
Total chromium	mg/L	Yearly				
Total dissolved solids	mg/L	Quarterly				
Total organic carbon	mg/L	Yearly				
Total petroleum hydrocarbons C6-C9	mg/L	Yearly				
C10-C14	mg/L	Yearly				
C15-C28	mg/L	Yearly				
C29-C36	mg/L	Yearly				
C10-C36 (Sum)	mg/L	Yearly				
Total Phenolics	mg/L	Yearly				
Xylene	mg/L	Yearly				
Zinc	mg/L	Yearly				

Waste Management Facility - 5293

Monitoring Point 10 - GWM6

Pollutant	Unit	Monitoring frequency	Date Sampled	Date Sampled	Date Sampled	Date Sampled
			Date Data Obtained	Date Data Obtained	Date Data Obtained	Date Data Obtained
			Sample Code	Sample Code	Sample Code	Sample Code
Alkalinity (as calcium carbonate)	mg/L	Quarterly				
Aluminium	mg/L	Yearly				
Ammonia	mg/L	Quarterly				
Arsenic	mg/L	Yearly				
Barium	mg/L	Yearly				
Benzene	mg/L	Yearly				
Biochemical oxygen demand	mg/L	Yearly				
Cadmium	mg/L	Yearly				
Calcium	mg/L	Quarterly				
Carbonate	mg/L	Quarterly				
Chemical oxygen demand	mg/L	Yearly				
Chloride	mg/L	Quarterly				
Chlorinated volatile compound	mg/L	Yearly				
Chromium (hexavalent)	mg/L	Yearly				
Cobalt	mg/L	Yearly				
Conductivity	µS/cm	Quarterly				
Copper	mg/L	Yearly				
Ethyl benzene	mg/L	Yearly				
Fluoride	mg/L	Yearly				
Lead	mg/L	Yearly				
Magnesium	mg/L	Quarterly				
Manganese	mg/L	Yearly				
Mercury	mg/L	Yearly				
Nitrogen Oxides	mg/L	Yearly				
Organochlorine pesticides	mg/L	Yearly				
Organophosphate pesticides	mg/L	Yearly				
pH	pH	Quarterly				
Phosphate	mg/L	Yearly				
Phosphorus (Total)	mg/L	Quarterly				
Potassium	mg/L	Quarterly				
Salinity	mg/L	Quarterly				
Sodium	mg/L	Quarterly				
Sulfate	mg/L	Quarterly				
Toluene	mg/L	Yearly				
Total chromium	mg/L	Yearly				
Total dissolved solids	mg/L	Quarterly				
Total organic carbon	mg/L	Yearly				
Total petroleum hydrocarbons C6-C9	mg/L	Yearly				
C10-C14	mg/L	Yearly				
C15-C28	mg/L	Yearly				
C29-C36	mg/L	Yearly				
C10-C36 (Sum)	mg/L	Yearly				
Total Phenolics	mg/L	Yearly				
Xylene	mg/L	Yearly				
Zinc	mg/L	Yearly				

Waste Management Facility - 5293

Monitoring Point 11 - GWM7

Pollutant	Unit	Monitoring frequency	Date Sampled	Date Sampled	Date Sampled	Date Sampled
			Date Data Obtained	Date Data Obtained	Date Data Obtained	Date Data Obtained
			Sample Code	Sample Code	Sample Code	Sample Code
Alkalinity (as calcium carbonate)	mg/L	Quarterly				
Aluminium	mg/L	Yearly				
Ammonia	mg/L	Quarterly				
Arsenic	mg/L	Yearly				
Barium	mg/L	Yearly				
Benzene	mg/L	Yearly				
Biochemical oxygen demand	mg/L	Yearly				
Cadmium	mg/L	Yearly				
Calcium	mg/L	Quarterly				
Carbonate	mg/L	Quarterly				
Chemical oxygen demand	mg/L	Yearly				
Chloride	mg/L	Quarterly				
Chlorinated volatile compound	mg/L	Yearly				
Chromium (hexavalent)	mg/L	Yearly				
Cobalt	mg/L	Yearly				
Conductivity	µS/cm	Quarterly				
Copper	mg/L	Yearly				
Ethyl benzene	mg/L	Yearly				
Fluoride	mg/L	Yearly				
Lead	mg/L	Yearly				
Magnesium	mg/L	Quarterly				
Manganese	mg/L	Yearly				
Mercury	mg/L	Yearly				
Nitrogen Oxides	mg/L	Yearly				
Organochlorine pesticides	mg/L	Yearly				
Organophosphate pesticides	mg/L	Yearly				
pH	pH	Quarterly				
Phosphate	mg/L	Yearly				
Phosphorus (Total)	mg/L	Quarterly				
Potassium	mg/L	Quarterly				
Salinity	mg/L	Quarterly				
Sodium	mg/L	Quarterly				
Sulfate	mg/L	Quarterly				
Toluene	mg/L	Yearly				
Total chromium	mg/L	Yearly				
Total dissolved solids	mg/L	Quarterly				
Total organic carbon	mg/L	Yearly				
Total petroleum hydrocarbons C6-C9	mg/L	Yearly				
C10-C14	mg/L	Yearly				
C15-C28	mg/L	Yearly				
C29-C36	mg/L	Yearly				
C10-C36 (Sum)	mg/L	Yearly				
Total Phenolics	mg/L	Yearly				
Xylene	mg/L	Yearly				
Zinc	mg/L	Yearly				

Waste Management Facility - 5293

Monitoring Point 12 - GWM8

Pollutant	Unit	Monitoring frequency	Date Sampled	Date Sampled	Date Sampled	Date Sampled
			Date Data Obtained	Date Data Obtained	Date Data Obtained	Date Data Obtained
			Sample Code	Sample Code	Sample Code	Sample Code
Alkalinity (as calcium carbonate)	mg/L	Quarterly				
Aluminium	mg/L	Yearly				
Ammonia	mg/L	Quarterly				
Arsenic	mg/L	Yearly				
Barium	mg/L	Yearly				
Benzene	mg/L	Yearly				
Biochemical oxygen demand	mg/L	Yearly				
Cadmium	mg/L	Yearly				
Calcium	mg/L	Quarterly				
Carbonate	mg/L	Quarterly				
Chemical oxygen demand	mg/L	Yearly				
Chloride	mg/L	Quarterly				
Chlorinated volatile compound	mg/L	Yearly				
Chromium (hexavalent)	mg/L	Yearly				
Cobalt	mg/L	Yearly				
Conductivity	µS/cm	Quarterly				
Copper	mg/L	Yearly				
Ethyl benzene	mg/L	Yearly				
Fluoride	mg/L	Yearly				
Lead	mg/L	Yearly				
Magnesium	mg/L	Quarterly				
Manganese	mg/L	Yearly				
Mercury	mg/L	Yearly				
Nitrogen Oxides	mg/L	Yearly				
Organochlorine pesticides	mg/L	Yearly				
Organophosphate pesticides	mg/L	Yearly				
pH	pH	Quarterly				
Phosphate	mg/L	Yearly				
Phosphorus (Total)	mg/L	Quarterly				
Potassium	mg/L	Quarterly				
Salinity	mg/L	Quarterly				
Sodium	mg/L	Quarterly				
Sulfate	mg/L	Quarterly				
Toluene	mg/L	Yearly				
Total chromium	mg/L	Yearly				
Total dissolved solids	mg/L	Quarterly				
Total organic carbon	mg/L	Yearly				
Total petroleum hydrocarbons C6-C9	mg/L	Yearly				
C10-C14	mg/L	Yearly				
C15-C28	mg/L	Yearly				
C29-C36	mg/L	Yearly				
C10-C36 (Sum)	mg/L	Yearly				
Total Phenolics	mg/L	Yearly				
Xylene	mg/L	Yearly				
Zinc	mg/L	Yearly				

Waste Management Facility - 5293

Monitoring Point 13 - GWM9

Pollutant	Unit	Monitoring frequency	Date Sampled	Date Sampled	Date Sampled	Date Sampled
			Date Data Obtained	Date Data Obtained	Date Data Obtained	Date Data Obtained
			Sample Code	Sample Code	Sample Code	Sample Code
Alkalinity (as calcium carbonate)	mg/L	Quarterly				
Aluminium	mg/L	Yearly				
Ammonia	mg/L	Quarterly				
Arsenic	mg/L	Yearly				
Barium	mg/L	Yearly				
Benzene	mg/L	Yearly				
Biochemical oxygen demand	mg/L	Yearly				
Cadmium	mg/L	Yearly				
Calcium	mg/L	Quarterly				
Carbonate	mg/L	Quarterly				
Chemical oxygen demand	mg/L	Yearly				
Chloride	mg/L	Quarterly				
Chlorinated volatile compound	mg/L	Yearly				
Chromium (hexavalent)	mg/L	Yearly				
Cobalt	mg/L	Yearly				
Conductivity	µS/cm	Quarterly				
Copper	mg/L	Yearly				
Ethyl benzene	mg/L	Yearly				
Fluoride	mg/L	Yearly				
Lead	mg/L	Yearly				
Magnesium	mg/L	Quarterly				
Manganese	mg/L	Yearly				
Mercury	mg/L	Yearly				
Nitrogen Oxides	mg/L	Yearly				
Organochlorine pesticides	mg/L	Yearly				
Organophosphate pesticides	mg/L	Yearly				
pH	pH	Quarterly				
Phosphate	mg/L	Yearly				
Phosphorus (Total)	mg/L	Quarterly				
Potassium	mg/L	Quarterly				
Salinity	mg/L	Quarterly				
Sodium	mg/L	Quarterly				
Sulfate	mg/L	Quarterly				
Toluene	mg/L	Yearly				
Total chromium	mg/L	Yearly				
Total dissolved solids	mg/L	Quarterly				
Total organic carbon	mg/L	Yearly				
Total petroleum hydrocarbons C6-C9	mg/L	Yearly				
C10-C14	mg/L	Yearly				
C15-C28	mg/L	Yearly				
C29-C36	mg/L	Yearly				
C10-C36 (Sum)	mg/L	Yearly				
Total Phenolics	mg/L	Yearly				
Xylene	mg/L	Yearly				
Zinc	mg/L	Yearly				

Pollutant Monitoring - Correction Log

EPL No: 5293

Sample Point	Pollutant	Sample Date and Time	Original Data	Corrected Data	Date Originally Published	Reason