

ST. MATTHEW'S CHURCH OF ENGLAND, WINDSOR

Built 1817 to 1822

ARCHITECT: FRANCIS GREENWAY

Restored 1963 to 1965

INSTRUCTIONS FOR MAKING MODEL.

1. Score all dotted lines with a blunt table knife (count black line along roof ridge in piece 3 as "dotted").
2. Cut through all continuous black lines (except black line along roof ridge in piece 3.)
3. Ensure all slots A, B, C, D, etc., are cut through before assembling. They are best cut with a sharp knife point or stiff razor blade.  
USE A THICK PAD OF NEWSPAPER UNDERNEATH.

Pieces 1 & 2. (Nave and Tower).

(Note: Piece 1 must be cut between tower and body of nave 2.4 inches in from dotted line of flap A1.)

Make sure you have cut slots A, B, C, D, E, L, M, and N, and tab. A

Form Nave and Tower, fitting tab A through Slot A and fixing tabs A, 1, 2, and 3, in place with gum or SCOTCH MAGIC TRANSPARENT TAPE.

Corners may be reinforced with SCOTCH MAGIC TRANSPARENT TAPE.

Don't fix flap A4 in place at this stage.

Piece 3. (Roof of Nave).

(Note: don't cut along centre black line of roof ridge - "score" it.)

After cutting out (don't forget slots in eaves at Tower end, and Slots K) bend centre ridge of roof and tab B, then form gable and eaves at Eastern end; hold in place by mitred corners. (Re-inforce mitred corners with SCOTCH tape.). Join flanges with SCOTCH MAGIC TRANSPARENT TAPE.

Form Eaves of Western (tower) end, holding flap(s) K underneath mitred corner(s). (Re-inforce mitred corners with SCOTCH MAGIC TRANSPARENT TAPE.)

Using the point of a pair of scissors, ease the flaps sealing the 4 inner ends of the eaves into their slots.

Fit roof assembly into nave/tower assembly.

Piece 4. (Sanctuary).

Cut all slots. Curve brick wall by running it long ways between a knife blade and your thumb. Set aside.

Piece 5. (Roof of Sanctuary).

Form a box with the multiple printed rectangles, first fitting slots U and V together, then bending flap L across one end of the box, and holding it in place by flap RR, tuck the end of flap RR into the open end of the box.

With thumb and knife blade give each 'point' a gentle curve.

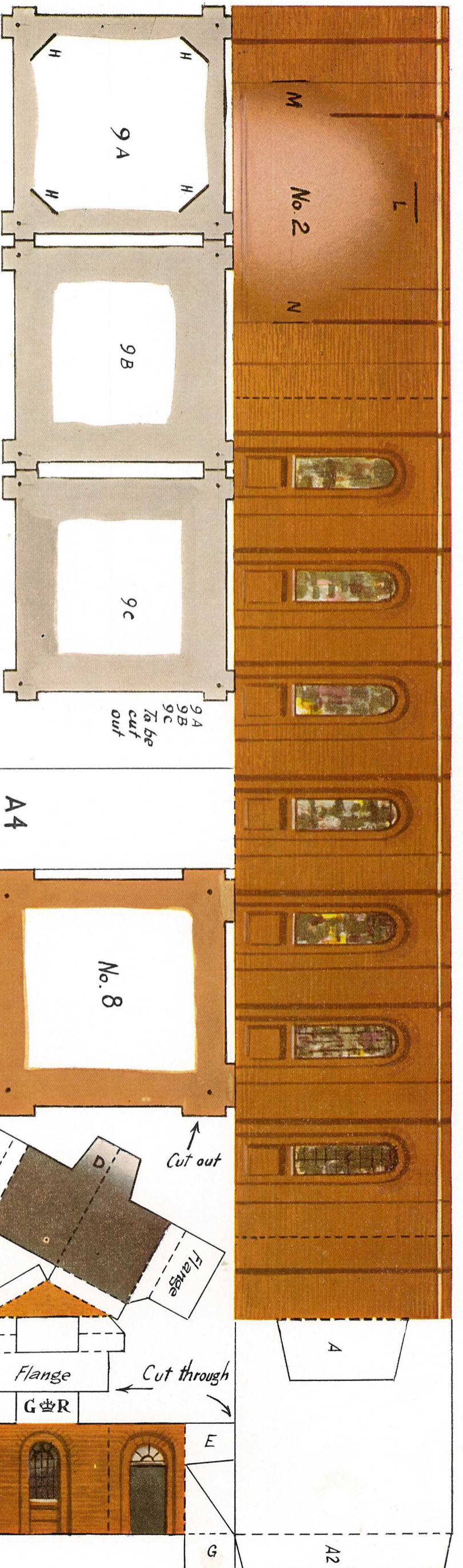
Now fit tabs W, X, Y & Z, of piece 4 into slots W, X, Y and Z, of piece 5, holding them down with the box. Fit tab R into slot RR; fit tab P under tab Z; fit tab O under tab W. Fit each point under small grey semicircle at tip of centre point.

Fit whole assembly to Eastern end of Nave by fitting tabs L, M, & N, thru slots L, M, & N. Hold in place by slotting M and MM, N & NN, together.

Piece 6 (Porch).

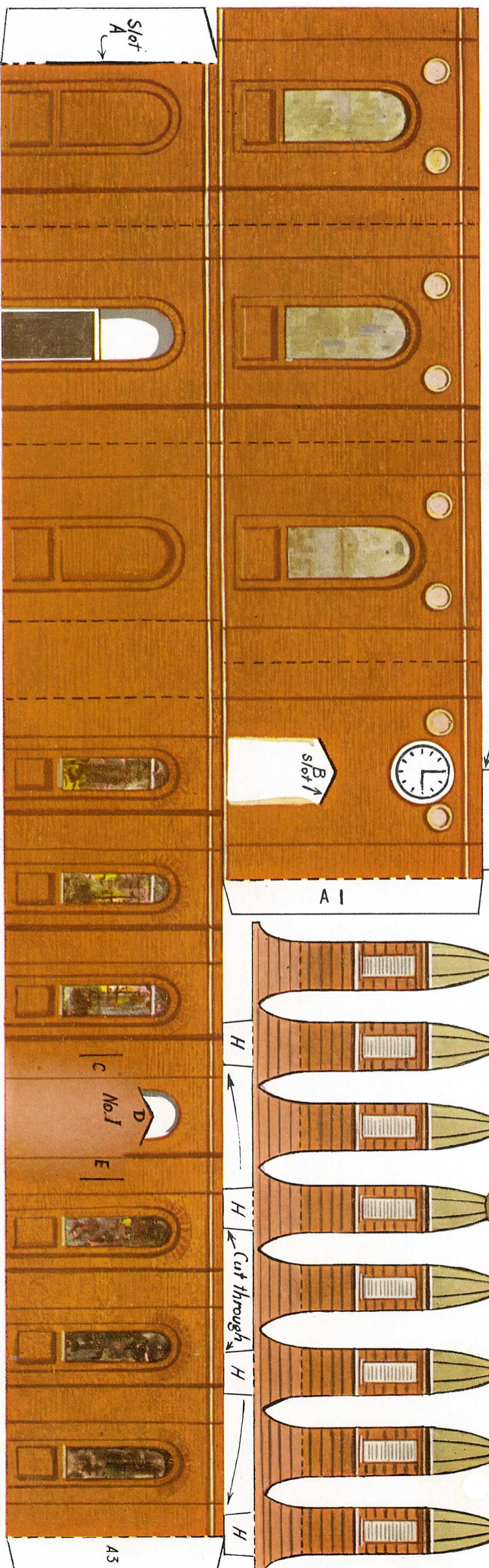
Cut out and fold to form porch.





ST. MATTHEW'S CHURCH OF ENGLAND, WINDSOR  
 BUILT 1817 TO 1822  
 ARCHITECT: FRANCIS GREENWAY  
 RESTORED 1963 TO 1965

cut through



cut through

