

# THE DEERUBBIN CENTRE

GRAND OPENING



COMMEMORATIVE BOOKLET



Hawkesbury City Council

# THE DEERUB GRAND OPENING

C O M M E M O R A T I V E   B O O K L E T

## contents

<page>

Message from the Mayor.....	3
From the Architects .....	4
History of the Deerubbin Centre Site .....	5
Opening Plaque.....	5
Fascinating Facts.....	6
History of the Hawkesbury City Library .....	7
Hawkesbury Central Library .....	9
Room Names .....	10-11
A Remarkable Discovery .....	12
Planning for the Future .....	12
Commercial Component .....	13
Chapters Cafe.....	13
History of the Former Hospital Site .....	13
Inaugural Exhibition.....	14
Public Artwork.....	15
Hawkesbury Regional Gallery .....	16
Those involved in the Project.....	17
Community Rooms and Studio .....	18
Access to the Centre .....	19
Designed for Energy Efficiency.....	19

# BIN CENTRE

## A MESSAGE FROM THE MAYOR

*Council has great pleasure in presenting you with this booklet produced to commemorate the opening of The Deerubbin Centre.*



The centre takes its name from the word the traditional Aboriginal owners of the region, the Darug people, gave to what we know today as the Hawkesbury River. It was chosen as a result of a public submission program for the naming of rooms and facilities within the cultural precinct.

The Deerubbin Centre, officially opened on 25 June 2005 and built at a cost of \$14.85 million, comprises the new Hawkesbury Central Library, Hawkesbury Regional Gallery, community meeting rooms and commercial space. Set amidst paved and landscaped grounds, the Centre features underground parking, a café and a specially commissioned public artwork titled 'Hospital Beds'.

The opening of this Centre fulfils the work of a number of elected Councils and many staff who have worked on developing this project since the property, on which it now stands, was purchased in 1998.

The development has evolved to accommodate the needs of the community. I believe the result we have today is a magnificent complex built within a very tight budget.

The Precinct has been well planned, with the inclusion of extensive areas of commercial space to supplement the ongoing costs of maintenance, day-to-day operations, and conducting programs.

I commend the Architects, Pont Williams and Leroy who have given us a landmark building for the Hawkesbury that blends beautifully with its surrounds.

The provision of a new library, which is more than three time larger than the former building, is a tremendous asset for the Hawkesbury Community and I encourage you all to make full use of the many services it has to offer.

The opening of the long awaited Regional Gallery provides exciting opportunities for local residents to access many cultural experiences and will attract additional tourism to the area, benefiting the commercial sector.

I would encourage you to visit our very first exhibition at the gallery Agri/culture: Re-creating the Living Landscape, which has been curated by Cheryle Yin-Lo and a community curatorium.

The Deerubbin Centre is destined to become a meeting place for the Hawkesbury community providing a focus for the enjoyment of visual art, education, learning and community activity.

*Clr Bart Bassett*

MAYOR OF HAWKESBURY



# THE DEERUBBIN CENTRE

## COMMEMORATIVE BOOKLET

“

*The scale, materials, textures and colours of the exterior of the building harmonise with those of the surrounding buildings...*”

### FROM THE ARCHITECTS

The brief was to design a building to accommodate the Hawkesbury Central Library and the Hawkesbury Regional Gallery, and to provide community and seminar rooms, commercial office space, car parking and a café.

The concept comprises a building containing two stories of accommodation with a car park beneath. It is positioned on part of the site of the former Hawkesbury Hospital to form one side of a courtyard, the other sides bounded by the former hospital buildings and a separate café. The courtyard creates a centrally located external meeting place which is accessible from George Street, Macquarie Street and Christie Street, and provides direct access to the various surrounding buildings, both new and existing. Paved areas linked to the café provide space for outdoor dining. Colonnades around the ground floor give protection to the library from the sun yet allow glass walls for maximum use of daylight.

The building is planned around an inner atrium designed to provide natural light to the central area of the library on the ground floor and the offices on the first floor, at the same time creating a visually exciting focal point within the internal space. The entrance foyer, which links all the internal accommodation vertically by a lift and stair, is an imposing three floors in height and is approached from George Street, the car park or the courtyard. The ground floor accommodates a meeting rooms, community studio and seminar room. The gallery, located on the first floor, is principally an enclosed space with a lounge and terrace to cater for special events.

The scale, materials, textures and colours of the exterior of the building harmonise with those of the surrounding buildings, with particular design features along the Macquarie Street and courtyard elevations reflecting elements of the old hospital building. The result is a building that fits comfortably within the town's urban fabric.

The building benefits from a number of environmentally sustainable design features. A cogeneration system installed in an underground plant room beneath the café supplements electricity to the building for light and power from a gas fired generator. Heat from the generator is harnessed to run the air-conditioning plant, thus reducing the consumption of electricity from the grid. The windows are fitted with either solar insulating glass or mechanically operated louvres and blinds to minimise solar gain inside the building and resulting in savings in air-conditioning running costs.





## HISTORY OF THE DEERUBBIN CENTRE SITE

- **March 1998** Land acquired from State Government for \$1 million
- **February 1999** Funding of \$300,000 from State Government to conserve and adapt the former Hospital Building
- **July 1999** Work commenced on Peppercorn Place co-location of Home and Community Care Services with funding assistance from State and Federal Governments of \$601,000
- **June 2000** Refurbishment of Fitzgerald Wing completed and commercially let
- **May 2001** Peppercorn Place opens
- **May 2001** Council appoints Architects Pont Williams and Leroy Pty Ltd to plan for the redevelopment of the Former Hospital Site
- **September 2002** The restored Former Hospital Building opened
- **July 2003** Initial funding received from Ministry for the Arts for Public Artwork



- **September 2003** Tender Accepted from Grant Constructions Pty Ltd for construction of the complex
- **October 2003** Tender accepted from MPI Projects Pty Ltd to provide a cogeneration plant
- **December 2003** Work on the Deerubbin Centre commences
- **February 2004** Former Hospital Building leased
- **November 2004** Memorandum of Understanding for Management and Operation of the Cultural Precinct is signed with 12 stakeholder organisations
- **May 2005** First meeting of the Cultural Precinct Advisory Committee
- **June 2005** Opening celebrations – Public Art, Library, Gallery and Grand Opening.



## OPENING PLAQUE AN ARTWORK IN ITSELF

The opening plaque was designed by Andrew Rankine Design Associates based on an original artwork by Darug Elder Aunty Edna Watson, featuring the river and commemorating the first meeting between Yarramundi, the Indigenous leader, and Governor Arthur Phillip. Elements of this painting will be used by The Deerubbin Centre and the Hawkesbury Regional Gallery for branding purposes.

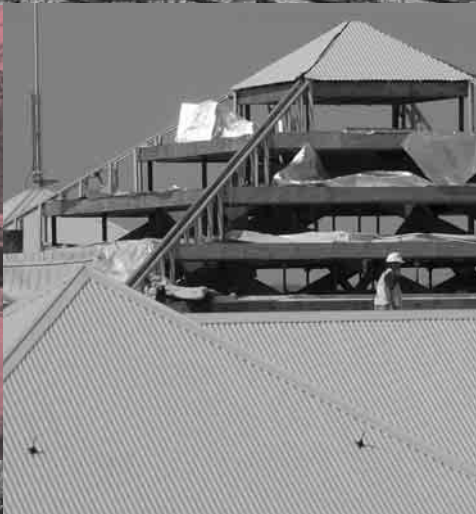
The finishes applied to the metal on either side of the plaque serve to indicate the different societies that have inhabited this region. The left side is reminiscent of Aunty Edna's painting suggesting Indigenous habitation which significantly underlays much of the panel. Below this is an arc of clear coated polished aluminium suggesting the beach on the shores of the river. The river wave structure is in three dimension and is constructed of clear coated polished aluminium that reflects light in interesting ways. The right section of the plaque has a pattern treatment which includes regular rectangular shapes reminiscent of house floor plans indicating European Settlement. Holes in this layer give views to the layer beneath. Through the centre of the plaque is the figurative river made from alloy, bent and curved into strips.

The plaque can be viewed on the basement foyer wall next to the lift.



# 2005

## THE DEERUBBIN CENTRE COMMEMORATIVE BOOKLET



### SOME FASCINATING FACTS

- Building The Deerubbin Centre involved one of the biggest single concrete pours undertaken in NSW
- The pour took 186 trucks laden with 960 cubic metres of concrete
- 70 staff poured over 2,740sq metres of concrete in one day
- The building is supported by 331 grout injected piles
- If lined up end to end these piles would stretch 1.4 kilometres
- The Cogeneration Plant is held down by 265 metres of ground anchors. Otherwise in times of flood it would lift out of the ground like an empty swimming pool
- There are 85,000 bricks within the walls of the Centre and 8,500 sq metres of painted surfaces
- Over 1 kilometre of aluminium skirting was used in the construction together with 100 doors
- The impressive atrium is 256 square metres and is 13.5 metres high
- The wood for the atrium was sourced from Tasmania



## HISTORY OF THE HAWKESBURY CITY COUNCIL LIBRARY SERVICE

Windsor School of Arts & Literary Institute Society was formed and obtained land in Bridge Street, Windsor in 1857. The School of Arts building was constructed and officially opened by John Dunmore Lang in 1862.

The Richmond Literary Institute & School of Arts was built in 1866 following the establishment of the Society in 1860. The Premier of NSW, Sir Henry Parkes officially opened the building. Members paid a subscription fee to borrow books. Lectures on various matters were presented.

In 1935 the Munn-Pitt Report was published and recommendations included free public library services, four years later The Library Board was established in NSW to provide library funding. The first public library in the Hawkesbury district was established by Windsor Municipal Council and was housed in the School of Arts building in Thompson Square. The state subsidy was £87, Council's contribution was £260. The Library served a population of 3,460 with 1 staff.



The first purpose built library building was constructed by the Council in Fitzgerald Street, and was opened by the Mayor, Alderman Vic Gillespie in 1953. Colo Shire Council joined with Windsor to form Windsor/Colo Joint Library, operating from Fitzgerald Street in Windsor and West Market Street in Richmond.

By 1979 the Hawkesbury's population was 32,950. At this time there were 8,235 borrowers plus a book stock of 39,331, with annual loans of 144,000. Windsor Council resolved to build a new library as the existing building was too small.

The new library was built at the cost of \$716,000. Davey, Bridley and Vickery Architects designed the building and it was built by Alan C. Smith Constructions. The following year (1980) the Windsor Central Library was officially opened by the Hon. L. Ferguson (Deputy Premier of NSW). Extensions were also made to Richmond Library and these were officially opened by the Hon. H.F. Jenson, MP (Minister for Local Government and Roads) in 1980.

“  
*The first purpose built library building was constructed by the Council in Fitzgerald Street, and was opened by the Mayor, Alderman Vic Gillespie in 1953.*  
”



# 2005

## THE DEERUBBIN CENTRE COMMEMORATIVE BOOKLET

“

*The first sod on the site was turned on 5 December 2003 and the new Hawkesbury Central Library opened on the ground floor of The Deerubbin Centre on 6 June 2005*

”



As part of the revamped service, a Local Educational Resource Network (LERN) was established as part of the Library Service in 1980. Peter Poulson developed the collection which was made available from the Wilberforce office to various schools within the Hawkesbury district. LERN ceased to operate in 1988.

In 1981 Colo Shire and Windsor Municipal Councils amalgamated to form Hawkesbury Shire Council and the Library was known as the Hawkesbury Shire Council Library Service. During 1985-1986 the Library Service was computerised. The card catalogue removed and replaced with public access computers (OPACS) to access the Library collection. New smaller style borrower's cards were also issued.

is no longer operating). Book Depots were designed for communities in geographically isolated areas or areas with limited transport.

In 2001 the Hawkesbury City Council approved the concept of a new library building on the Former Hospital Site in Macquarie Street, Windsor and Architects Pont Williams and Leroy were appointed to design and manage the construction of the development.

In December 2003 Council accepted a tender from Grant Constructions Pty Ltd to construct a complex incorporating the library, a regional gallery, meeting rooms, commercial space and a café.

The first sod on the site was turned on 5 December 2003 and the new Hawkesbury Central Library opened on the ground floor of The Deerubbin Centre on 6 June 2005 with a community celebration involving a chain of 420 people symbolically moving the last books from the old library to the new.

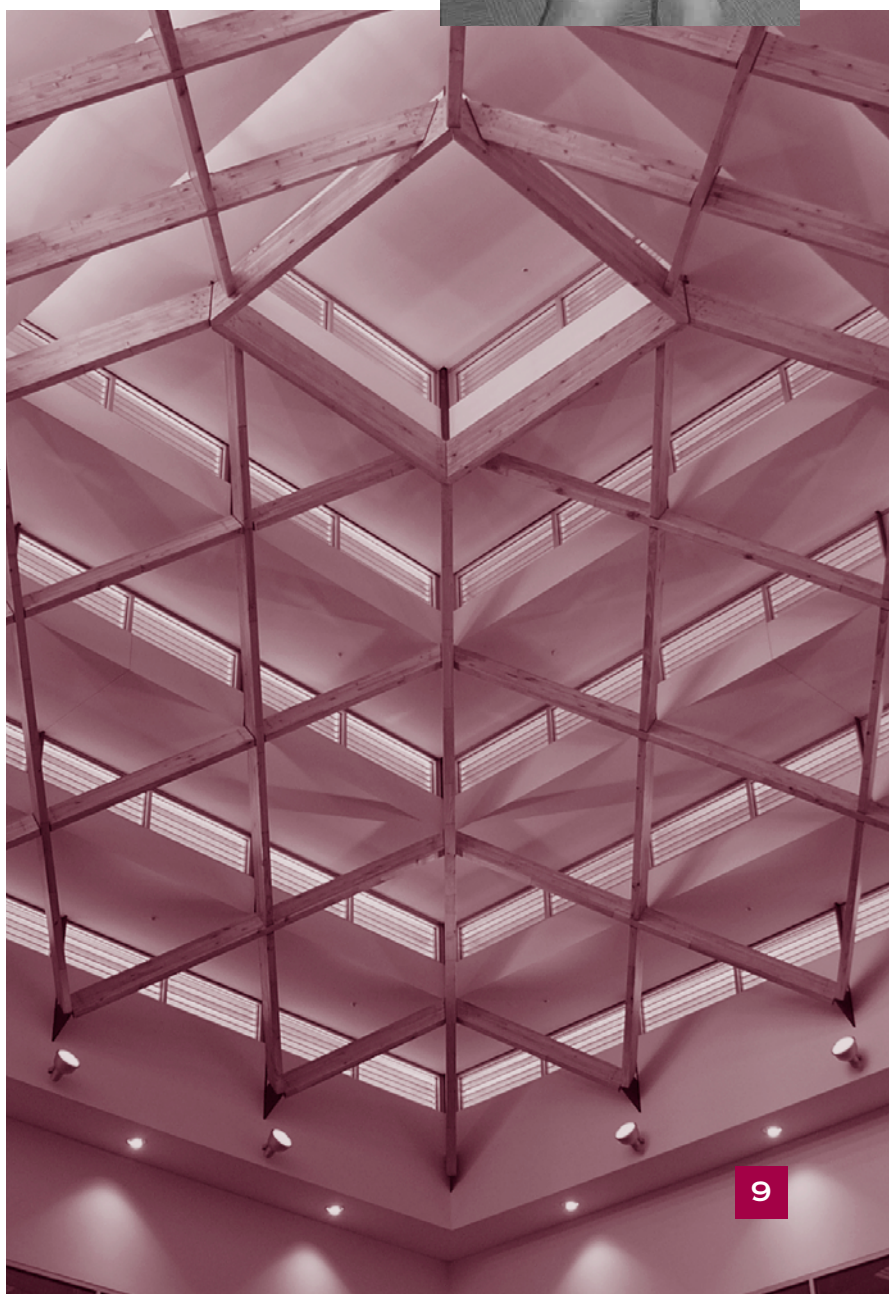
The first Book Depot was established in the Hawkesbury in 1987 at Bilpin. Others were established at Glossodia, North Richmond, Bligh Park, St. Albans, Pitt Town, Blaxlands Ridge, and Wisemans Ferry. (Pitt Town





## HAWKESBURY CENTRAL LIBRARY

- Located at street level within The Deerubbin Centre, the new Hawkesbury Central Library is nearly three times the size of the former Windsor Central Library at approximately 2,540 square metres.
- The new library is an important extension of the educational, recreational and community life of the Hawkesbury.
- A major architectural feature of the new library is the light-filled atrium which floods the large, seated reading area, service desk and enquiry counter with reflected natural light.
- The atrium also allows light to penetrate into the commercial space located above the library.
- Major features of the new library include
  - An information technology room with space for up to 20 terminals
  - A separate photocopying room with space for up to four photocopiers
  - A separate young adults area
  - A separate Local Studies area and an archival storage and work area
  - The Local Studies area has been enhanced with a range of genealogical indexes, maps and published family and local histories. It also includes microfilm copies of local newspapers dating to 1888 and an online image database
  - Community Rooms available during daytime and evening
  - Large area for the junior collection as well as a children's activity area, two tutorial rooms, readers' seating and one study room
  - Increased shelving
  - Under cover car parking, including a drop-off zone and disabled parking spaces
  - The collection of books on CD has been extended



# THE DEERUBBIN CENTRE

## COMMEMORATIVE BOOKLET



Image courtesy Hawkesbury Central Library

### TEBBUTT ROOM

*Named in recognition of*  
**John Tebbutt (1834-1916)**

John Tebbutt was a pioneer in the field of astronomy. He was born, educated and lived his whole life in the Hawkesbury district. He published his findings profusely throughout his life including "Astronomical Memoirs". He is buried in a vault which he designed at St. Matthew's Church of England Cemetery in Windsor. In honour of Tebbutt's achievements, the International Astronomical Union renamed a lunar crater on the moon in 1973 and he appeared on the first \$100 note which appeared in 1984. He was highly regarded internationally & his observations assisted in advancing astronomy.

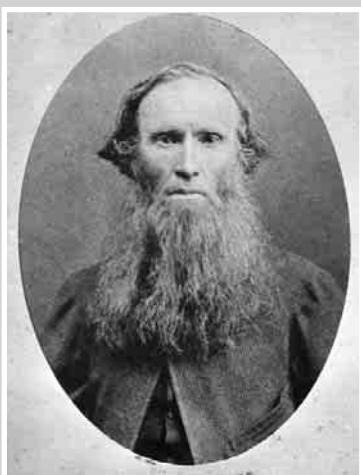


Image from "Hawkesbury Heritage"

### STAN STEVENS STUDIO

*Named in recognition of*  
**Stan Stevens (1924-2002)**

Stan Stevens was a journalist & photographer. Born & bred in the Hawkesbury district he spent much of his life writing and photographing the Hawkesbury community. He was a respected journalist & was editor of the Hawkesbury Gazette for more than 30 years. Stan was the author of several publications including "The Hawkesbury Scene" and "Hawkesbury Heritage". He was a noted photographer, with images published in "Hawkesbury 1794-1994" & the first president of the Hawkesbury District Camera Club. He significantly contributed to the contemporary collection of images of the Hawkesbury Central Library. Stan was involved with local government in the Hawkesbury as well as the driving force behind numerous community groups.



### CHARLES HARPUR ROOM

*Named in recognition of*  
**Charles Harpur (1813-1868)**

Charles Harpur, poet and patriot was born and educated at Windsor, NSW the son of convict immigrants Joseph Harpur & his wife Sarah (nee Chidley). As a result of the patronage of Governor Lachlan Macquarie, Harpur had access to several private libraries and with the encouragement of his father acquired a detailed knowledge of Shakespeare, English poetry and a wide vocabulary. He was one of Australia's most significant writers of the colonial period & during his lifetime published numerous volumes of poetry, contributions to the periodical press & literary criticism. Harpur is credited with writing the first play by an native born Australian to be published & performed in Australia.





*Photographed Craig Morton, Richmond*

## ROZZOLI ROOM

*Named in honour of*

**the Rozzoli family Ron Rozzoli (1936 - ) & The Hon. Kevin Rozzoli (1939 - )**

The Hon. Kevin Rozzoli Dip. Law, D.LL (Honoris Causa), was Member for Hawkesbury in the NSW Legislative Assembly from 1973 to 2003 serving as Speaker from 1988 to 1995. His main interest is in land-use planning & environmental issues, particularly the Hawkesbury River. In 1999 the University of Western Sydney honoured him with a Doctorate of Letters recognising his services to the University & Western Sydney. He is currently Chair of the National Drug & Alcohol Research Centre, a Director of the NSW Law & Justice Foundation & Director of the Public Interest Advocacy Centre.

Ronald Rozzoli was Honorary Secretary of the Richmond School of Arts from 1960 until 2003. His dedication and leadership is reflected in this unique Hawkesbury heritage icon. He has always had a keen interest in the local community

The family came to the Hawkesbury in 1940. Their father Frank commenced business as a retail jeweller in 1946. Brothers Ron and Kevin were both State Apprenticeship winners in the family trade of watchmaking. After Kevin entered Parliament Ron continued the business until 1995.



*With permission from the Mitchell Library,  
State Library of New South Wales*

## MARY REIBY ROOM

*Named in honour of*

**Mary Reiby (1777-1855)**

Mary Reiby (nee Haydock) entrepreneur and merchant was born in Lancashire, England, and was transported to the colony in 1792 after being convicted of horse stealing at the young age of 15 years. She married Thomas Reiby (sic) in 1794 and following his death in 1811, was left in control of her husband's numerous business concerns including several farms on the banks of the Hawkesbury River near Windsor. By the time of her death at Newtown in 1855, she had amassed an extensive business empire which included real estate, shipping and trade. Despite her convict background Reiby rose to occupy a respected place in colonial society with her tireless interest in charitable works, education and politics.



*With permission from the Mitchell Library,  
State Library of New South Wales*

## LOUISA ATKINSON ROOM

*Named in recognition of*

**Louisa Atkinson (1834-1872)**

Born Caroline Louisa Waring Atkinson near Berrima NSW, this remarkable young woman known as Louisa Atkinson was educated privately & became well versed in both the arts & the natural environment. As a young woman she moved to Fernhurst at Kurrajong Heights where she was able to study the local flora & bushland & take many explorations in search of specimens. Her research was praised by William Woolls & she made several new botanical discoveries which bear her name. She is also recorded as wearing men's attire on some of her jaunts. Atkinson was also a noted women's writer and she published fiction as well as articles & drawings. She moved back to Berrima & then married James Calvert in 1869. She died in 1872 not long after giving birth to a daughter. A memorial was established in 1979 in Powell Park in honour of the botanist by the Kurrajong Heights Garden Club.

# THE DEERUBBIN CENTRE

## COMMEMORATIVE BOOKLET

“  
**Archaeologists**  
*carrying out a program*  
*of investigation and*  
*documentation found*  
*substantial evidence*  
*of elements of the*  
*original c.1820*  
*convict barracks*  
 ”



### A REMARKABLE DISCOVERY

A remarkable discovery was made on this site during its redevelopment.

Archaeologists carrying out a program of investigation and documentation found substantial evidence of elements of the original c.1820 convict barracks, which was constructed where the Hawkesbury Benevolent Society Building now stands.

While part of the original barracks is contained within the restored hospital building, an investigation in the rear courtyard uncovered drains, paths, surfaces and part of the verandah and walls of the barracks. An intact convict privy as well as foundations of buildings associated with the use of the area as a hospital were also found.

These findings were documented for future interpretation in the new development and covered with geotechnical fabric and sand to preserve and protect them intact for future generations.

An interpretation of the findings will be made, either within the new Library or in the Mortuary building, also located on the site and which is also to be conserved and restored by Council.

### PLANNING FOR THE FUTURE

The Cultural Precinct Advisory Committee has been established with its main priority being the development of a business plan within 12 months. The business plan will be the 'road map', setting goals for funding and other performance measures.

The Committee consists of representatives from Council, the community (4), Friends of the Hawkesbury Art Collection and Regional Art Gallery (2), Hawkesbury Historical Society (2) the education sector, Darug Custodian Aboriginal Corporation, Chamber of Commerce, and the tourism sector.

#### The Committee will:

- provide advice and guidance to staff on the development of a plan to facilitate the best use of resources.
- make a centre that people want to visit and that meets the aspirations of the community.
- advise on the development of policies and plans for the conservation and exhibition of the various collections - library, museum and gallery.
- work with staff and volunteers to seek funds, in addition to the annual budget allocation by Council.





## COMMERCIAL COMPONENT

The development of the Former Hospital Site provided Council with an opportunity to establish facilities for the community including commercial leasing, that would in turn assist in covering the running costs.

At present Council is leasing the former Fitzgerald Wing to Action Insurance Brokers, the former hospital building to Catholic Health Care Services Ltd and is currently in negotiation with a number of tenants for occupation of The Deerubbin Centre. It is also investigating the development of the former Pine Warehouse site which fronts George Street for a commercial development.

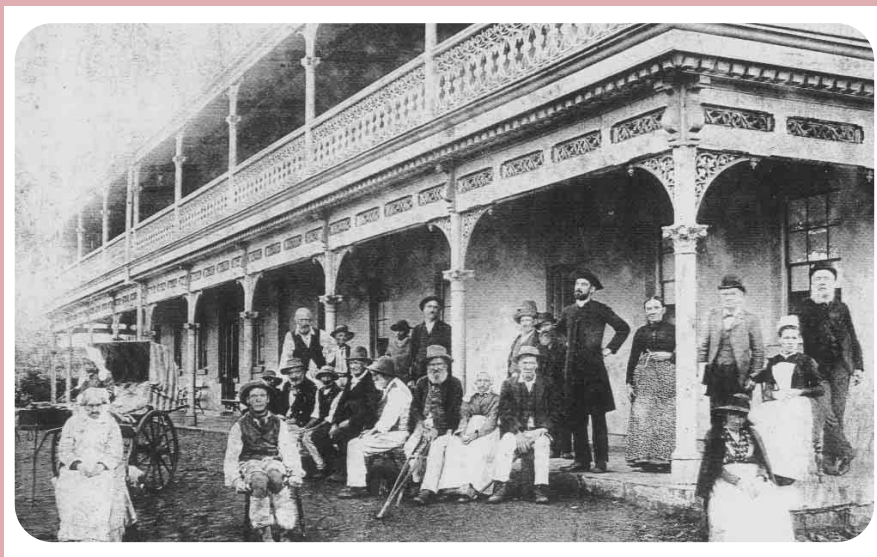
## CHAPTERS CAFÉ

Within the next few months Chapters Café will open in its purpose built space within the forecourt of the Deerubbin Centre.

The café will feature a range of light meals and beverages with gourmet pizza for lunch and dinner. Patrons will be able to enjoy relaxed outdoor dining in the landscaped area adjoining the Bed Heads public artwork which will provide a cooling atmosphere in the warmer months.

The owners of Chapters, Peter and Nadia Maait have a café at Castle Hill Library and are well versed with the needs of Library patrons. There will also be opportunities for some innovative partnerships with the Gallery, which are currently the subject of discussions.

## HISTORY OF THE FORMER HAWKESBURY HOSPITAL SITE



Windsor Hospital was originally built as a convict barracks in 1820 and taken over by the Hawkesbury Benevolent Society in 1846. The building in this time provided a refuge for the sick and elderly.

The main hospital building was extended and changed several times. The most comprehensive changes took place in the early twentieth century. The Federation Arts and Crafts style “rebuilding” which can now be seen was opened in 1911. From the post World War II period, the hospital was to gain, in the 1960s, the Johnson Wing, a lift and toilet additions in the main building and an administration wing.

The last major permanent work on the site was the Service Block opened in 1980. This building is on the site of an early nineteenth century Presbyterian Church and was converted to a co-location of home and community services known as Peppercorn Place.

A new \$70M Hawkesbury Hospital was constructed on land opposite the former Hospital and has been operating since August 1996.

“  
*The main hospital building was extended and changed several times. The most comprehensive changes took place in the early twentieth century.*”

# THE DEERUBBIN CENTRE

## COMMEMORATIVE BOOKLET

“

*The exhibition curator is Cheryle Yin-Lo, whose work methods are based on forming close links with communities in the creation of exhibitions that touch hearts and minds.*

”



### INAUGURAL EXHIBITION

#### Agri/culture: Re-creating the Living Landscape.

Agri/culture is an exploration of the past folding into the present, seen through the lenses of social history and visual art.

The exhibition is remarkable in a number of ways. First, it is the inaugural exhibition of the Hawkesbury Regional Gallery, the region's first public gallery. Secondly, it is the first time a specifically cultural scrutiny of our agricultural heritage has taken place. The result is an exhibition that interprets the intersections of a number of powerful themes: from life on the farm and methods of production to changing landscapes, fire and flood, sustainability and urbanisation.

To help realise such an ambitious project, many contributors have generously offered their expertise. Much time and local knowledge has been added by a specially-convened group which gathered stories, objects, photographs, artworks and hard facts. This group took on the name, 'curatorium' along with the responsibility that goes with that role: "to care for and conserve".

The exhibition curator is Cheryle Yin-Lo, whose work methods are based on forming close links with communities in the creation of exhibitions that touch hearts and minds. She was engaged by Council following a successful application to the Western Sydney Regional Organisation of Councils (WSROC) which contributed \$32,000 to the cost of the exhibition.

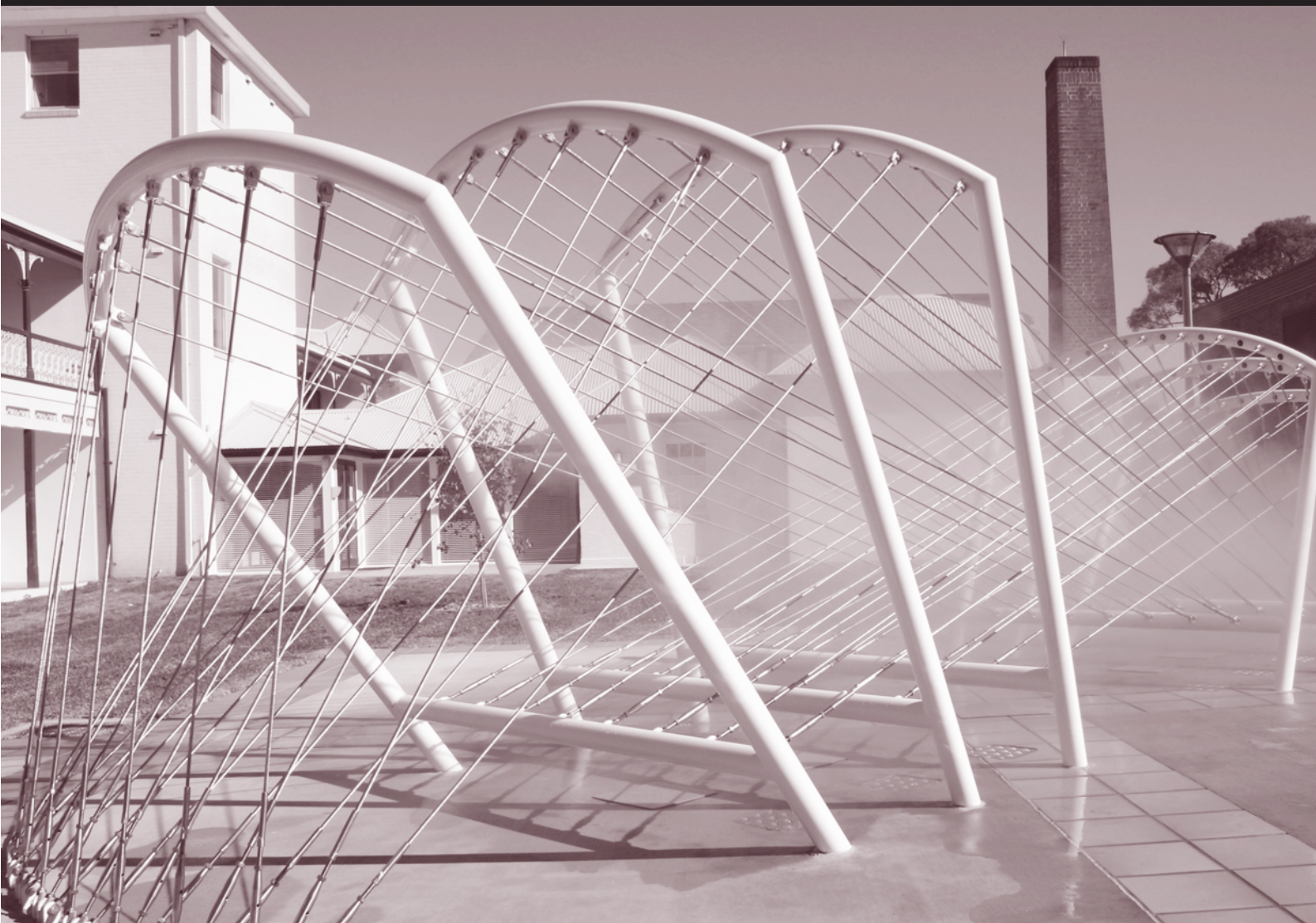
#### Items on show include

- Artworks, art installations, sculpture and drawings
- Agricultural tools and equipment
- Books, pamphlets, documents & publications
- Personal recollections, audio tapes & oral histories
- Domestic items/objects
- 'Found' objects
- Handmade items
- Letters and reports, film and video
- Maps and photographs - historical or contemporary
- Personal items
- Signs
- Textiles

Agri/culture opens at Hawkesbury Regional Gallery on 25 June and continues till 4 September 2005







## PUBLIC ARTWORK PROVIDES FOCAL POINT

To mark the completion of the Deerubbin Centre, including the restoration of the Hawkesbury Benevolent Society Building, Hawkesbury City Council commissioned public artists Susan Milne and Greg Stonehouse to interpret the multiple meanings of this site. Their sculpture makes reference to the former convict barracks and hospital, as well as the tension between the site's historical and contemporary uses. Hospital bed ends are the dominant feature, with intermittent bursts of mist providing rest and refreshment for body and spirit.

The sculpture provides a focal point for all the elements of the site including the Hawkesbury Benevolent Society Building, Peppercorn Place, commercial and professional offices, the Chapters Café and The Deerubbin Centre.

The ribbon cutting ceremony was conducted as part of the opening celebrations for The Deerubbin Centre Cultural Precinct on Thursday 2 June, 2005.

## HAWKESBURY REGIONAL GALLERY

Hawkesbury Regional Gallery is part of an extensive network of regional galleries throughout Australia. It provides a cultural and educational resource for the Hawkesbury and surrounding regions through a distinctive program of changing exhibitions, public programs and associated activities.

Travelling exhibitions will be sourced from the best regional, state and national institutions, and works by professional artists based in the Hawkesbury will be staged in consultation with the curator.

Agri/culture: Re-creating the Living Landscape, which celebrates the launch of the Gallery with a cultural scrutiny of our agricultural heritage and a fascinating view of the place we call home will be on exhibition until 4 September 2005.

To follow, the exhibition Friends and Neighbours (16 September - 23 October) will explore the artistic common ground shared by the Nepean, Hills and Hawkesbury communities, along with their distinctive contrasts. Curator Kath von Witt's selection of works from traditional and contemporary sources offers a fresh and surprising exploration of North-Western Sydney's creative energy. This will be a show based on the Hawkesbury Art Collection, The Lewers Bequest and various private collections, supported by work from contemporary local artists of the Hawkesbury, Penrith and the Hills.

From 4 November till 11 December The Regional Gallery will be showing a unique collection of photographs by renowned Australian photographer Axel Poignant (1906-1986). As well as photographing iconic figures like Patrick White, Judith Wright and Albert Namatjira, in 1951 Poignant travelled along the Hawkesbury River mail run. In these brilliant images he explores the way of life of descendants of pioneer settlers, living along an isolated tributary of the Hawkesbury half a century ago.

In 2006 the Touring Blake Prize For Religious Art will be just one of the many significant exhibitions to be hosted by Hawkesbury Regional Gallery.

Guided tours, lectures and workshops will be developed to complement the exhibition program and ensure that the gallery is accessible to all. The gallery will also run an active volunteer program and welcomes enquiries from sponsors and patrons.

The Stan Stevens Studio, on the ground floor of the Deerubbin Centre, provides a space for community exhibitions and workshops (bookings phone 4560 4460).

Hawkesbury Regional Gallery is a resource for all Hawkesbury residents and visitors to enjoy. Entrance is free and you are welcome to pop in between 10 am and 4 pm on weekdays (closed Tuesdays) or 10 am and 3 pm on Saturday and Sunday.



## THOSE INVOLVED IN THE PROJECT

### Hawkesbury Council

Councillor Bart Bassett, Mayor  
 Councillor Dianne Finch, Deputy Mayor  
 Councillor Ted Books  
 Councillor Barry Calvert  
 Councillor Kevin Conolly  
 Councillor Trevor Devine  
 Councillor Christine Paine  
 Councillor Bob Porter  
 Councillor Paul Rasmussen  
 Councillor (Dr) Rex Stubbs OAM  
 Councillor Neville Wearne  
 Councillor Leigh Williams

The current Council also acknowledges the commitment of previous Mayors and former Councillors and staff to this development.

### Cultural Infrastructure Works Project Team

This team is responsible for the establishment of cultural facilities including the Library, Gallery and Museum.

Clr Kevin Conolly  
 Graeme Faulkner, General Manager  
 Chris Daley, Director Infrastructure Services  
 Ingrid Hoffmann, Gallery and Museum Manager  
 Warren Leroy, Pont Williams and Leroy Architects  
 Joseph Litwin, Community and Cultural Services Manager  
 John Munns, Building Services Manager  
 Robert Pont, Pont, Williams and Leroy Architects  
 Sonia Porter, Cultural Infrastructure Projects Officer

### Staff

Robyn Gosper and the Library Service  
 Cultural Services  
 Building Services  
 Corporate Communications  
 Information Services  
 Financial Planning and Operations  
 Printing Services

### Architects

Pont, Williams and Leroy Pty Ltd

### Builder

Grant Constructions (NSW) Pty Ltd

### CONSULTANTS & AUTHORITIES

Principal Certifying Authority  
 Quantity Surveyor  
 Structural Engineer  
 Mechanical  
 Electrical  
 Hydraulic & Fire  
 Geotechnical

### COMPANY

Andrew Dean Consulting  
 Casey Burne & Associates  
 Warwick Donnelly P/L  
 HBA Consulting  
 Haron Robson Electrical  
 Harris Page & Assoc.  
 Jeffery & Katauskas

### SUPPLIERS

Block Supply  
 Bricks  
 Concrete  
 Reinforcement  
 Precast Concrete  
 Trusses  
 GL Beams (Atrium & Café)  
 LVL's  
 Door Hardware  
 Timber & Hardware Supply

Crane  
 Plant & Equipment Hire  
 Waste Removal  
 Shed Hire  
 Temporary Fencing  
 Temporary Fencing  
 Entry Mats  
 Book Return Chute  
 Toilet Grab Rails

### SUBCONTRACTORS

Services Search  
 Surveyor  
 Tree Lopper  
 Bored Piers  
 Excavator  
 Lift 1  
 Lift 2 Goods Lift  
 Hydraulics  
 Fire Protection  
 Electrical  
 Mechanical  
 Library Corridor Detection  
 Blocklayer

Concretor  
 Termite protection system  
 Reo. Fixer  
 Formwork  
 Scaffold (Supplier)  
 Scaffold (Rigger)  
 Structural Steel (fab)

Structural Steel (erect)  
 Windows  
 Plasterboard & Ceilings  
 Metalwork  
 Fixed Louvres  
 Helioscreen & Oper. Louvres  
 Door/frame Package  
 Carpentry  
 Metal Roofer  
 Roller Shutter  
 Joinery  
 Joint Sealing  
 Render  
 Tiler  
 Painter  
 Carpet  
 Roadworks  
 Landscaper  
 Sliding Gate Carpark  
 Mirrors/Showerscreens  
 Toilet Partitions  
 Lockers  
 Brick Cleaner  
 Wheelstops Carpark  
 Final Clean

C and M Bricks  
 Austral Bricks  
 Boral Concrete  
 Albion Steel  
 Sydney Precast  
 Lawmans Frame & Truss  
 Big River Timbers  
 Big River Timbers  
 Bunnings Trade (Casula)  
 Bunnings  
 Monaghans Mitre 10  
 Borger Crane Hire & Rigging  
 National Hire  
 Smartskip (J&M Waste)  
 Atco Structures  
 Play Safe Fencing  
 Aust. Temp Fencing (ATF)  
 Dunstone Maze  
 Raeco International  
 Grab Rail Industries

Groundsearch  
 McKinlay Morgan  
 Metro Tree Lopping  
 Advanced Foundation Solutions  
 Pan Excavations  
 Kone Elevators  
 Schindler/Deve Lifts  
 Schaumac Plumbing  
 P&R Fire Protection  
 Rivercorp P/L  
 Crest Air  
 3M Security  
 Whitchway  
 Norwest Bricklaying  
 PNM Bricklaying  
 Salerno Concrete  
 Smartbuilt Termimesh  
 A.N.Metro Steelfixing  
 F&F Formwork  
 Boral Scaffold  
 Western Suburbs Rigging  
 New World  
 Mario & Sons  
 Quality Rigging Services  
 Stella Aluminium  
 TNC Plastering  
 L & C Metalwork  
 CVS Louvres  
 Harvey Blinds  
 Fire Systems Engineering  
 Statesman Building Services  
 Skyview Roofing  
 Thompsons Roller Shutters  
 St Marys Joinery  
 Allsystems PFP  
 Bill Watson Industries  
 Fifa Group  
 Apply Painting  
 Floor Cover/Interface  
 North Shore Paving Co P/L  
 GJ's Landscapes  
 Magic Door Industries  
 Apex Aga  
 Cukuna Commercial Fab  
 Interloc  
 All Styles Pressure Cleaning  
 Barrier Safety systems  
 Clearwater Construction

# THE DEERUBBIN CENTRE

## COMMEMORATIVE BOOKLET

### COMMUNITY ROOMS AND STUDIO

Hawkesbury City Council has provided community spaces in the Hawkesbury Library and Regional Gallery Building, (The Deerubbin Centre) for the use of Hawkesbury-based community groups and organisations.

The rooms are designed to meet a variety of community needs and will accommodate 60 people in the Stan Stevens Studio, 80 in the Tebbutt Room and 20 in the Rozzoli Room.

#### Cost

Non-profit community groups or organisations that assist the community may use the rooms free of charge, however, a refundable bond will apply for all bookings. Community groups are defined as groups that meet the common community good and are non profit.

Fees and charges for other types of groups are adopted in Council's Revenue Pricing Policy and are reviewed annually. For further information see the "Booking Conditions for the Use of Community Rooms and Studio" or contact staff by phoning 4560 4460.

#### Bookings

Phone 4560 4460 for bookings or log onto the Council web page at:-  
<http://www.hawkesbury.nsw.gov.au/services.html>

#### Access

The rooms are available for use between the hours of:-

Monday-Friday: 8.30am-10.30pm

Saturday & Sunday: 9.00am-10.30pm

#### Parking

Parking is available during library and gallery opening hours in the basement car park and after 7.00pm in Christie and George Streets. Community groups and hirers must vacate the basement car park no later than 7.00pm.

### Facilities

A kitchenette provides access to tea/coffee-making facilities for all of the rooms.

Groups are responsible for providing their own beverage requirements.

Data cable and telephone ports are provided.

### Equipment & furniture

The rooms/studio have tables and chairs.

Bookings are essential for the following equipment:-

DVD, Overhead Projector, Screen, Slide Projector and Television/Video.

### Stan Stevens Studio

The Stan Stevens Studio is designed for visual arts activities, for example, painting, drawing and collage workshops.

The room accommodates a maximum of 60 persons seated (fewer if tables are required).

### Tebbutt Room

The Tebbutt Room is suitable for seminars, large meetings, workshops and similar events.

The room accommodates a maximum of 80 persons seated (fewer if tables are required) and is equipped with Data Projector, Lectern, Pin Board, Screen and Whiteboard.

### Rozzoli Room

The Rozzoli Room is a smaller room suitable for 20 persons seated (fewer if tables are required) and is equipped with Pin Board, Screen and Whiteboard.

### Charles Harpur Room

The Charles Harpur Room is located inside the library. It is available for use by library patrons for study purposes and can be booked for group use within library opening hours.

The room accommodates 35 persons seated (fewer if tables are required) and is equipped with a Whiteboard.





## ACCESS TO THE CENTRE

The Deerubbin Centre has underground parking for 88 vehicles (including disabled spaces), a covered drop-off point and a lift for disabled access.

Pedestrian access is from either George Street or Macquarie Street while vehicular access is gained via Christie Street. All vehicles exit via George Street.

## DESIGNED FOR ENERGY EFFICIENCY

The Deerubbin Centre is a state-of-the-art building which has been designed to minimise the emission of greenhouse gases with its own purpose-built cogeneration plant.

The plant is capable of generating up to 85 per cent of The Deerubbin Centre's electricity demand during peak and shoulder periods.

The plant runs on natural gas, which emits less carbon dioxide than coal-generated electricity. Its generator provides either heated or chilled water to the complex using waste heat for both heating or cooling, depending on the seasonal conditions.

The cogeneration plant is supplemented by a gas-fired boiler which can provide additional capacity to heat water in times of peak heating demand.

Another energy saving feature is the use of external louvres on the windows and atrium. The atrium louvres are fixed to deflect direct sunlight from the building's interior, reducing the radiant heat entering the building.

The window louvres have been designed to adjust automatically, depending on the angle of the sun at different times throughout the day, to provide maximum light with minimum impact on the building's cooling system.

2005  
COMMEMORATIVE BOOKLET