



Hawkesbury City Council

attachment 2  
to  
item 87

Draft Landscape Master Plan for  
Memorial Park , Kurrajong

date of meeting: 14 May 2013

location: council chambers

time: 6:30 p.m.



KURRAJONG MEMORIAL PARK masterplan

# LANDSCAPE CONCEPT

FOR  HAWKESBURY City Council

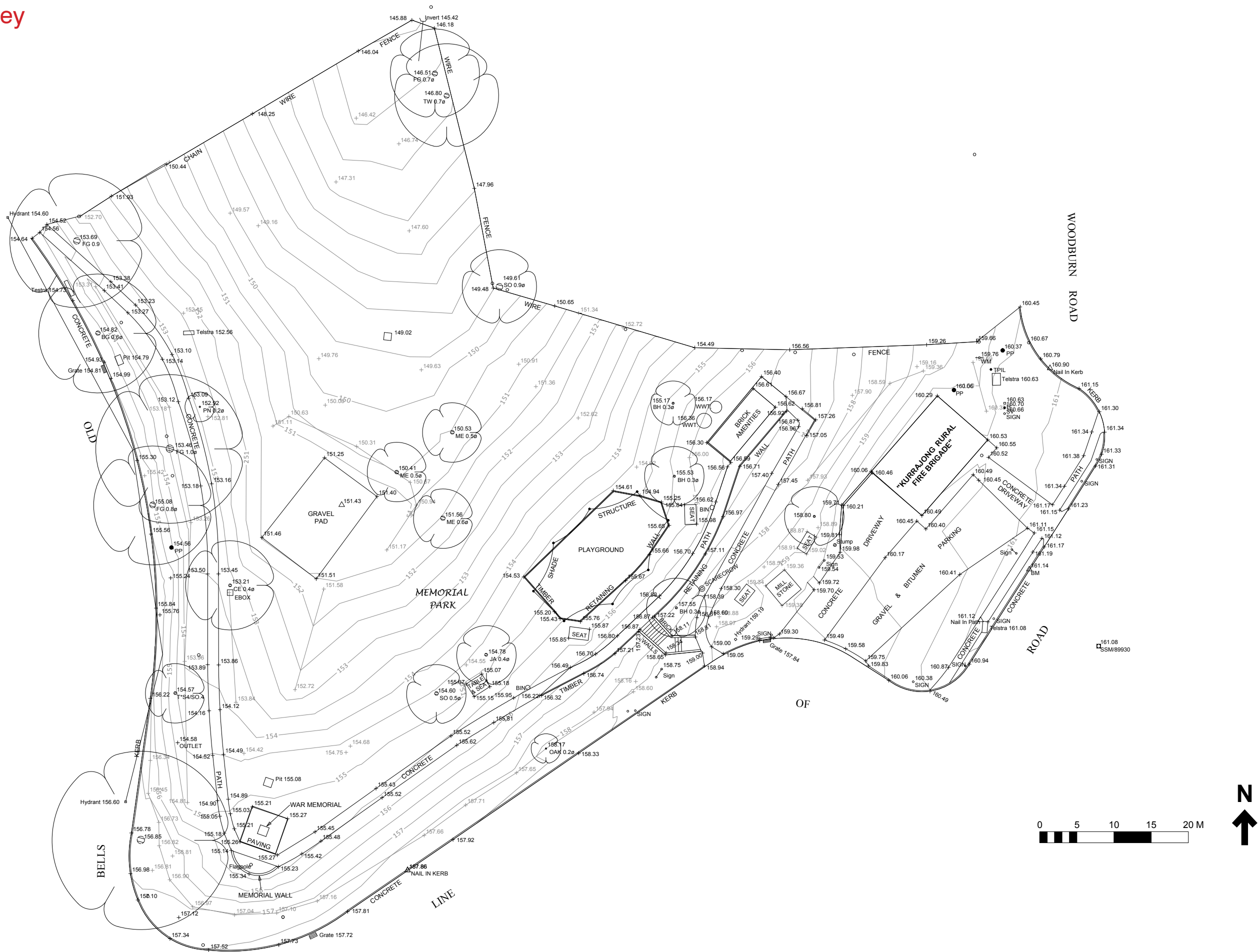
BY ENVIRONMENTAL PARTNERSHIP

Job #3234

April 2013



Site Analysis - Survey





# Site Analysis - Issues & Opportunities

## Issues

### Park Play and Recreation Experience



- Playspace:**
- Poor quality playground surfacing and walling;
  - Poor connection between paths and playground for pram access
  - No shaded backed seating within playground
  - No unstructured playspace area for imaginative play



### Park Arrival and Connection Experience



- Park frontage:**
- Limited street presence at heart of town centre
  - Limited visual cues to parkland, playground, toilets and memorial



- No formal stage area for annual Kurrajong events, such as:**
- Scarecrow Day October
  - Carols by Candlelight
  - Anzac Day
  - Music Festival



- Cultural Identity:**
- Poorly preserved heritage items
  - Limited history and art within Park
  - Look at adequate gathering space at memorial



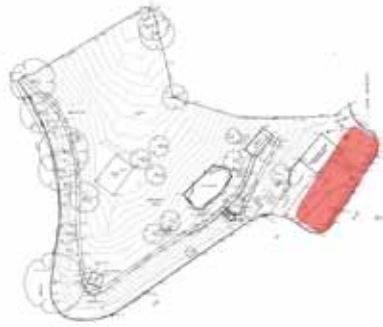
- Pedestrian links from park to Kurrajong Town Centre:**
- No formal paths link park to Old Bells Line of Road



- Amenity to Rural Fire Service area:**
- No shade/ seat for community gathering
  - No formalised parking

## Opportunities

### Park Arrival



- Potential Improvements:**
- Provide direct pedestrian path links
  - Provide street trees and garden beds
  - Provide seasonal interest through flowers and foliage
  - Improve ease of access from frontage into park

### Park Connections



- Potential Improvements:**
- Line pedestrian path links with tree avenue
  - Provide seasonal interest through flowers and foliage
  - Better link park to Old Bells Line Of Road frontage

### Play Space



- Potential Improvements:**
- Better connection to Pathways
  - Improved play opportunities
  - Places to sit

### Park Elements



- KEY**
- Native Planting/Garden
  - Existing Picnic table
  - Existing Seating
  - Existing Anzac Memorial
  - Existing Millstones



- Potential Improvements:**
- Garden / Floral Display interest during year

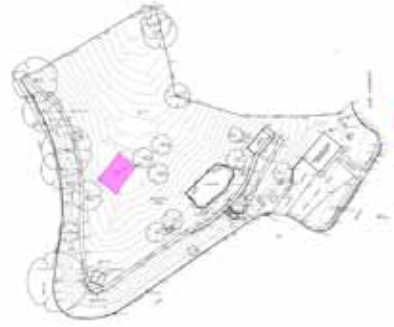


- Potential Improvements:**
- Improved Park Furniture Opportunities (siting and number)



- Potential Improvements:**
- Better Protection/ Promotion of Heritage and Culture

### Performance Stage



- KEY**
- Current Stage Location



- Temporary Stage**
- Defined area for setup of temporary stage for events
  - Low wall to grassed platform
  - Temporary stage setup on grassed platform
  - Low wall doubles as sitting edge day to day
  - Grassed platform potential for children's play or picnics



- Permanent Stage -Option 1:**
- Natural Shade(trees)
  - Tiered Platform
  - Closely located to playground and open grass area
  - Sitting edge/ steps



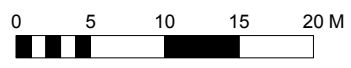
- Permanent Stage -Option 2:**
- Shade Structure
  - Raised Platform
  - Closely located to playground and generous open grass areas
  - Sitting edge/ steps
  - Access to Power and pathway



Site Analysis - Recommendations Plan



- Legend
- Path Link improvements to Town Centre
  - Playground pathway link improvements
  - Street Trees to park frontages to provide interest through changing seasonal display
  - Kurrajong Millstones protection and interpretation
  - Anzac Memorial potential event space/ location
  - Playground Drainage and surfacing improvements
  - Opportunity for community group activities such as gardening and bushcare
  - Improved play opportunities - eg non structured play such as vegetable garden
  - Preferred stage location (temporary or permanent)
  - Provision of Native Buffer Planting



Concept Design

NATIVE BUFFER  
PLANTING TO PARK  
BOUNDARIES

STAGE

- low walling and minor regrading to form a raised stage area
- low sandstone wall to provide incidental seating along the south and east edges
- level grassed area provides for informal play, picnics etc.

Note: Stage alternative one or two are able to be incorporated on this plan

TREE PLANTING

- provide interest through changing seasonal display
- reinforce visual link into the park from the town centre streetscape

MEMORIAL

- extend the brick pavement area to the north of the Obelisk for anzac gatherings
- provide backed seating and additional shade tree plantings (relocate furniture from play and millstone areas)
- investigate fence removal to connect memorial area into its park location
- provide Anzac planting around flagpole area of Rosemary for remembrance

PLAYGROUND:

- Moduplay Premium Nest Swing
- Moduply Premium Play Combination
- Moduply Single Rocker
- children's cycle track surrounding the playground
- replace the existing timber retaining wall with block sandstone walling which will provide incidental seating
- raised vegetable garden in recycled pipe
- provide path access to the playground from the existing footpath
- relocate backed seat to memorial area and demolish concrete pad

ADDITIONAL PEDESTRIAN LINK

- provide pedestrian path with steps to connect the park to town centre

FORMALISED CARPARK

- define the edge of the carpark
- replace the existing gravel and bitumen pavement with deco granite pavement
- garden bed
- provide street tree planting to parks southern frontage using deciduous species with seasonal floral display and native understory planting
- ensure pedestrian sight lines are maintained

WIDENED PEDESTRIAN FOOTPATHS

- widen the existing footpath to 1.8m in line with accessibility AS1428

MILLSTONES

- provide weather protection to millstones
- sandstone walls erected to surround the millstones provide incidental seating
- informal concrete steps provide informal pedestrian link from millstones into the lower areas of the park
- relocate backed seat to memorial area and demolish concrete pad



Legend

	Concrete pavement		Rubber softfall - type 2		Playground timber seat		Turf		Existing tree
	Stabilised road base		Rubber softfall - type 3		Back seat		Garden bed		Proposed tree
	Deco granite pavement		Mulch		Brick bollard		Native buffer (embankment area)		
	Brick pavement		Brick wall		Painted recycled planter for vegetable garden		Native buffer (boundary area)		
	Rubber softfall - type 1		Sandstone wall						
			Concrete wall						



# Materials and Plantings - Park frontage

## Planting

Planting selection to the park frontage proposes an avenue of *Pyrus calleryana* chanticleer (Pear) deciduous white flowering pear tress to the park town centre interface frontages. These trees are consistent with existing deciduous species used within the park and relevant to Kurrajong’s heritage as a fruit growing area.

Underplanting proposed consists of a mix of local hardy native species which produce seasonal white and purple floral display.

Underplanting is to be low enough to ensure pedestrian sight lines into and of the park are retained.



Melaleuca thymifolia



Hardenbergia violacea



Myoporum parvifolium  
'Fineleaf'



Mentha saturejoides  
Creeping mint



Pyrus calleryana



Pimelea linarifolia  
Rice Flower



Crytandra spinescens  
Spiny Crytandra



Dianella Litte Rev



Dianella Little Jess

## Materials

A robust set of materials has been selected which supports Kurrajongs existing character as a rural township area at the foot of the Blue Mountains. These include;

- Stabilised road base to carpark areas
- Concrete paths to match existing pedestrian paths
- Mild Steel edge to formalise carpark edge



Steel Edge

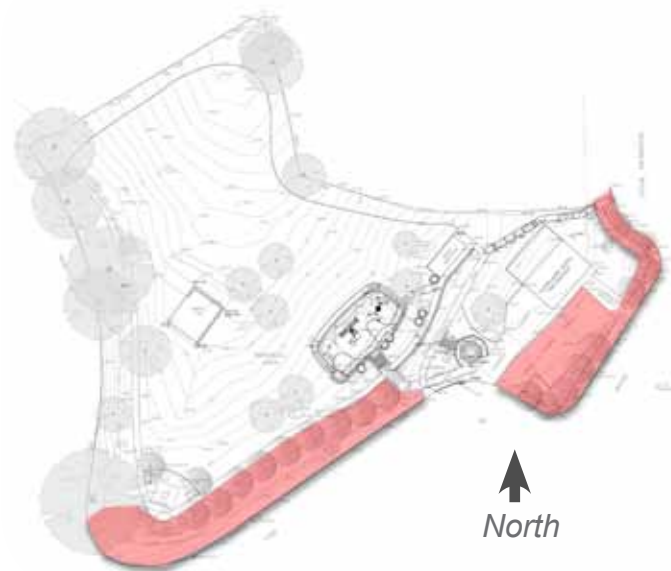


Stabilised road  
base to carpark



Concrete Pavement





Montage: *Pyrus calleryana* with low understory floral display



Montage: *Pyrus calleryana* with Autumn foliage display



Montage: *Pyrus calleryana* with Spring floral display



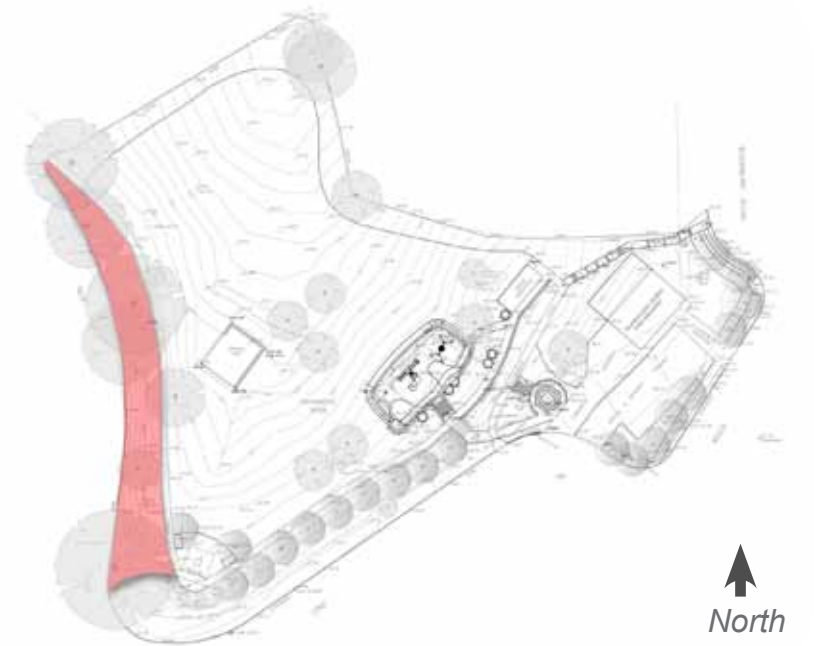
# Materials and Plantings - Embankment Area

## Native Buffer Planting

Planting selection to the park boundaries includes an a mix of locally endemic species of shrubs and groundcovers which have been selected to provide a hardy and easy to maintain mass planting which will be suited to the existing shady embankment along the western boundary.

Species were also selected for attracting native bird life and for white, pink and purple floral display in character with other areas of planting proposed within the park.

It is envisioned that planting works could be undertaken with the assistance of the local bush care group as suggested by its members at the community open day held on the 2nd March 2013.



Western Boundary embankment



*Juncus asiaticus*  
Common Rush



*Dianella Little Jess*



*Hardenbergia violacea*  
Native Sarsaparilla



*Pandorea pandora*  
wonga wonga vine



*Grevillea juniperina*  
Juniper-leaf Grevillea



*Pimelea linarifolia*  
Rice Flower



*Styphelia laeta var laeta*



*Myoporum parvifolium*  
'Fineleaf'



# Materials and Plantings - Boundary Area

## Native Buffer Planting

Plant species to the park boundaries which lie to the north east and interface residential development has been selected to provide a native vegetation screen buffer between residence and park users.

A mix of locally endemic species of shrubs and groundcovers which have been selected to provide a hardy and easy to maintain mass planting which will be suited to the north eastern boundary.

Species were also selected for attracting native bird life and for white, pink and purple floral display in character with other areas of planting proposed within the park, as well as being dense and quick growing to ensure maximum screening especially to newer built development to the east.

It is envisioned that planting works could be undertaken with the assistance of the local bush care group as suggested by its members at the community open day held on the 2nd March 2013.



North Eastern boundary



Acacia pubescens



Leptospermum polygalifolium



Kunzea ambigua



Ozothamnus diosmifolius



Philotheca myporiodes



Dodoonaea viscosa sp. cuneata



Hakea sericea



# Materials and Plantings - Park Playground

## Materials

A robust set of materials has been selected which supports Kurrajongs existing character as a rural township area at the foot of the Blue Mountains. These include;

- Crushed deco granite to playground area
- Concrete paths to match existing pedestrian paths
- Informal concrete sleeper steps in gravel provide incidental seating and play
- Sandstone walling and recycled timber and concrete sleepers provide for incidental seating and sitting steps throughout the playground area



Concrete sleeper steps with gravel infill



Sandstone block walling



red



purple



grey

Playground soft fall colours to match floral display selection palette



Playground soft fall recycled fines for beneath play equipment

## Play Equipment

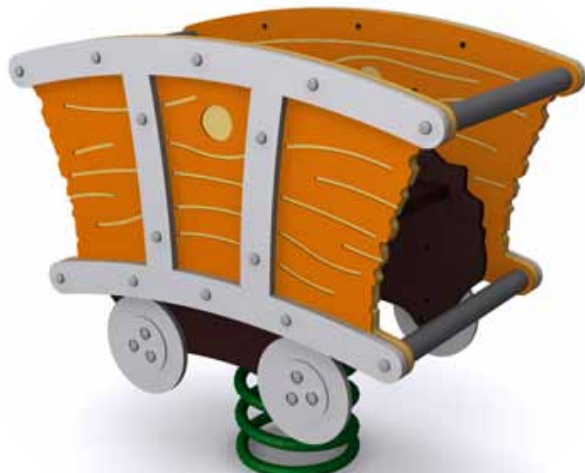
A selection of upgraded play equipment selected to provide a similar play experience currently found in the playground.

## Incidental Play

Additional play spaces within the playground area includes vegetables planted in raised concrete planters, a sealed children's bike loop.



A Premium play combination by Moduplay



B Train Style Rocker by Moduplay



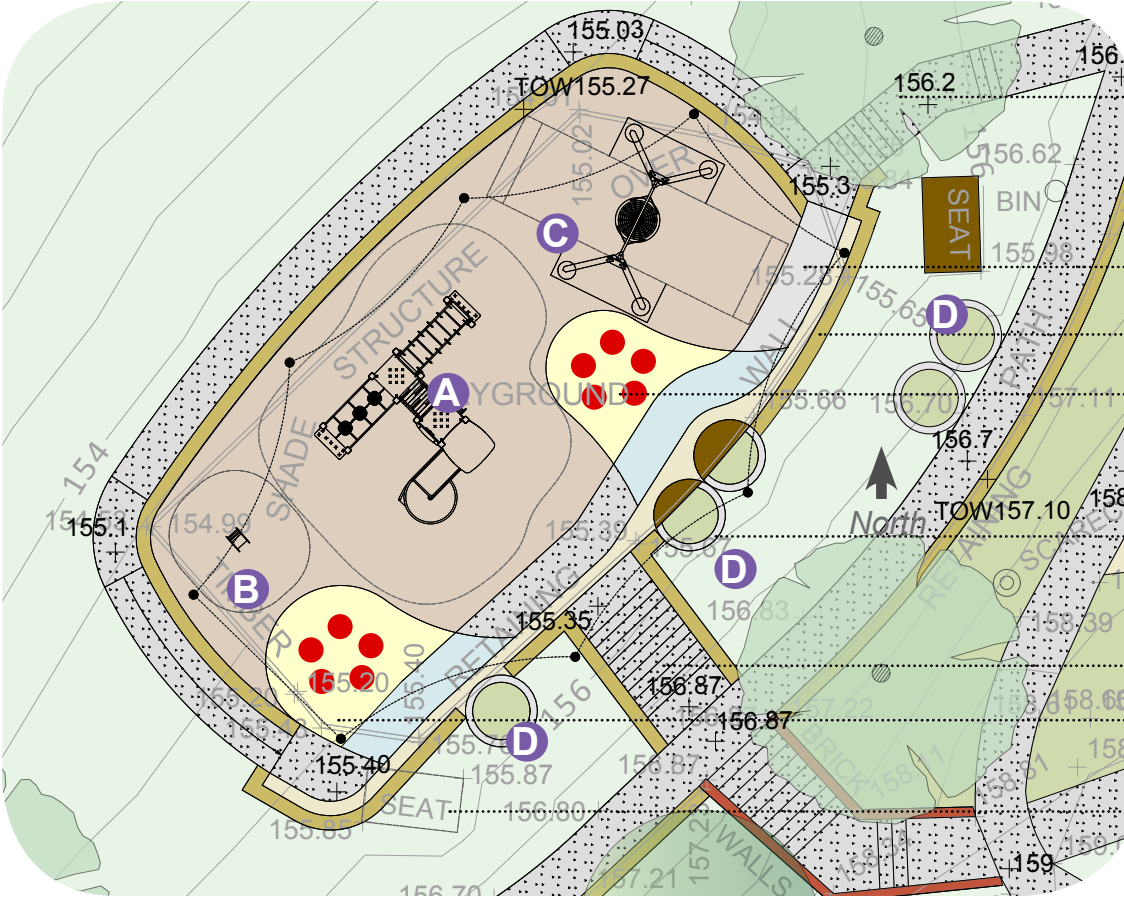
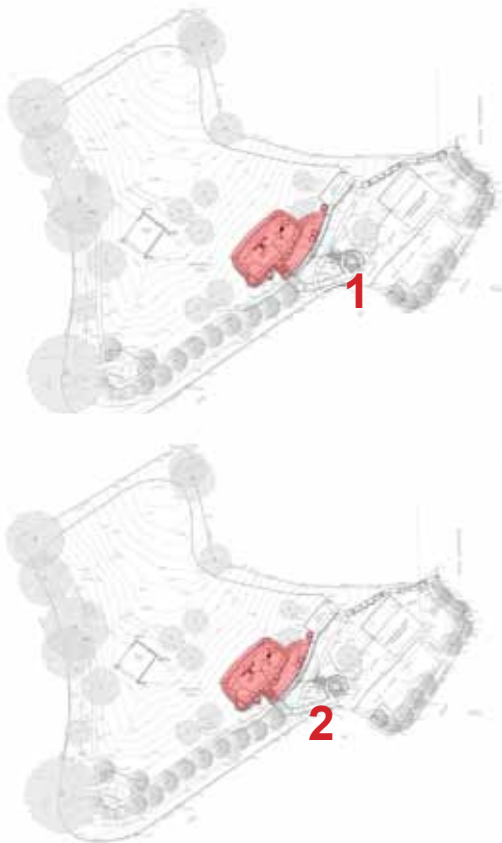
C Nest Swing by Moduplay



D Vegetable gardens in partial recycled pipes



Playground design

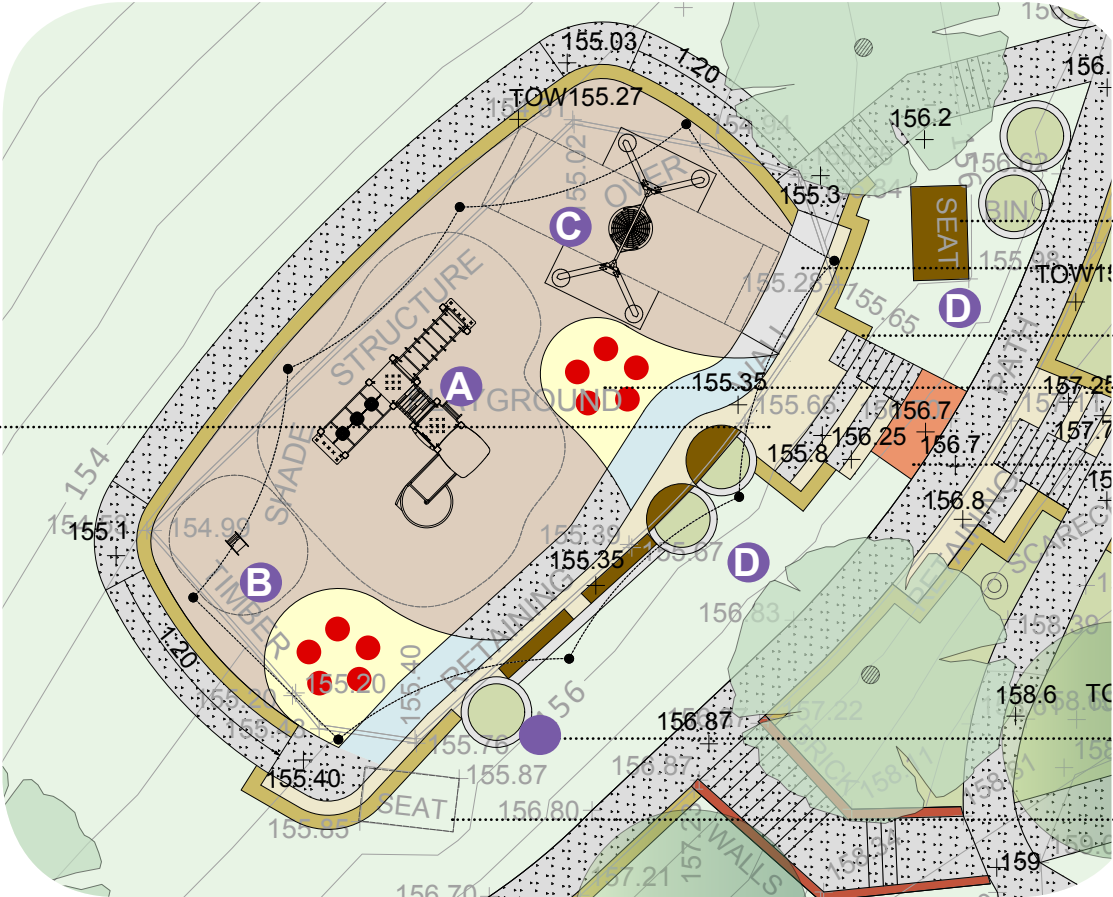


- Direct pedestrian path connection between playground and toilets
- Children's cycle loop track
- Sandstone sitting /retaining wall to playground
- Soft fall areas for incidental play and family gathering
- Raised vegetable planters with seating
- Direct pedestrian path connection to playground
- Soft fall areas for incidental play and family gathering
- Relocate backed seating to memorial area

1 Playground area detail plan option one



Recycled timber sleeper bench seat



- Retain existing backed seating
- Children's cycle loop track
- Sandstone sitting /retaining wall to playground
- Soft fall areas for incidental play and family gathering
- Direct pedestrian path connection to playground with concrete sitting steps for family gathering
- Raised vegetable planters with seating
- Relocate backed seating to memorial area

2 Playground area detail plan option two



# Materials and Planting - Memorial and Millstone Heritage Interpretation

## Placement

Memorial option one provides for improved flexibility and usage of the ANZAC memorial and flag pole in its current location within the south west corner of the lower area of the parkland. It is proposed to increase area for gatherings and everyday usage could be gained through the following changes;

- Extending the levelled brick pavement area surrounding the obelisk.
- Investigation (with RSL) to improve interaction with the memorial through the removal of the white pool fence which currently sits as a visual barrier between the memorial and its surrounds.
- Backed seating and flowering trees and planting of remembrance rosemary surrounding the flag pole.

Millstone option one retains the Millstones in their current location with weather protection of the heritage items through a Gazebo style shelter. This is to be complemented through improved surrounding pedestrian path which connects to the lower path through concrete steps in native groundcover plantings. A sandstone wall will surround the Millstones providing shaded incidental seating, which will also include interpretational signage panels.

## Materials and Furniture

A robust set of materials has been selected which supports Kurrajongs existing character as a rural township area at the foot of the Blue Mountains.

- Sandstone block retaining walls with gravel margin
- Concrete steps in crushed deco granite
- Concrete paths to match existing pedestrian paths with feature brick banding
- Mild steel interpretative signage panels

Gazebo structure;

- The structural elements proposed hot dip galvanized steel, feature Australian Hardwood posts teamed with Colorbond™ with shale grey colour roof sheeting.

## Planting

Planting selection to the Anzac Memorial proposes small shade species of *Pyrus callieriana* (Pear) deciduous white flowing pear tress consistent with other feature tree planting proposed throughout the park. These trees are consistent with existing deciduous species used within the park and relevant to Kurrajong's heritage as a fruit growing area. Under planting consists of a rosemary for remembrance to surround the flagpole area to the Anzac memorial.

Surrounding the Millstone a mix of local hardy native species which produce white and purple floral display to the embankment area below.



Interpretative signage



Existing heritage Millstones



Landmark Shelters Gazebo Style (K202)



Concrete Steps in Gravel

Colourbond roof and gutter colours



*Rosmarinus officinalis*



*Hardenbergia violacea*



*Myoporum parvifolium*



*Pimelea linarifolia*  
Rice Flower



*Crytandra spinescens*  
Spiny Cryptandra

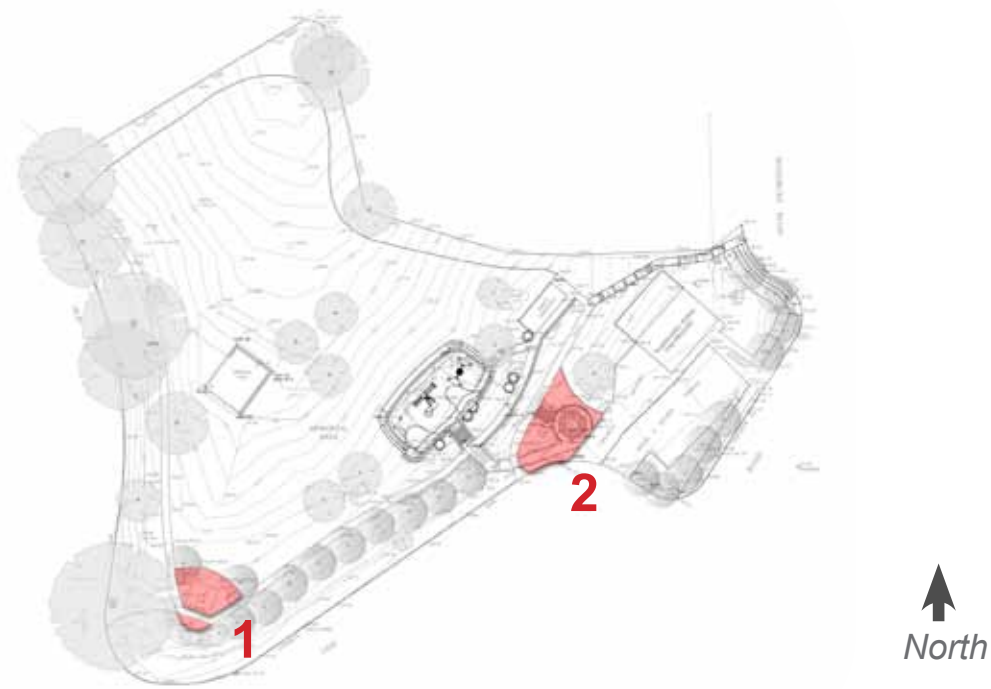


*Dianella Litte Rev*

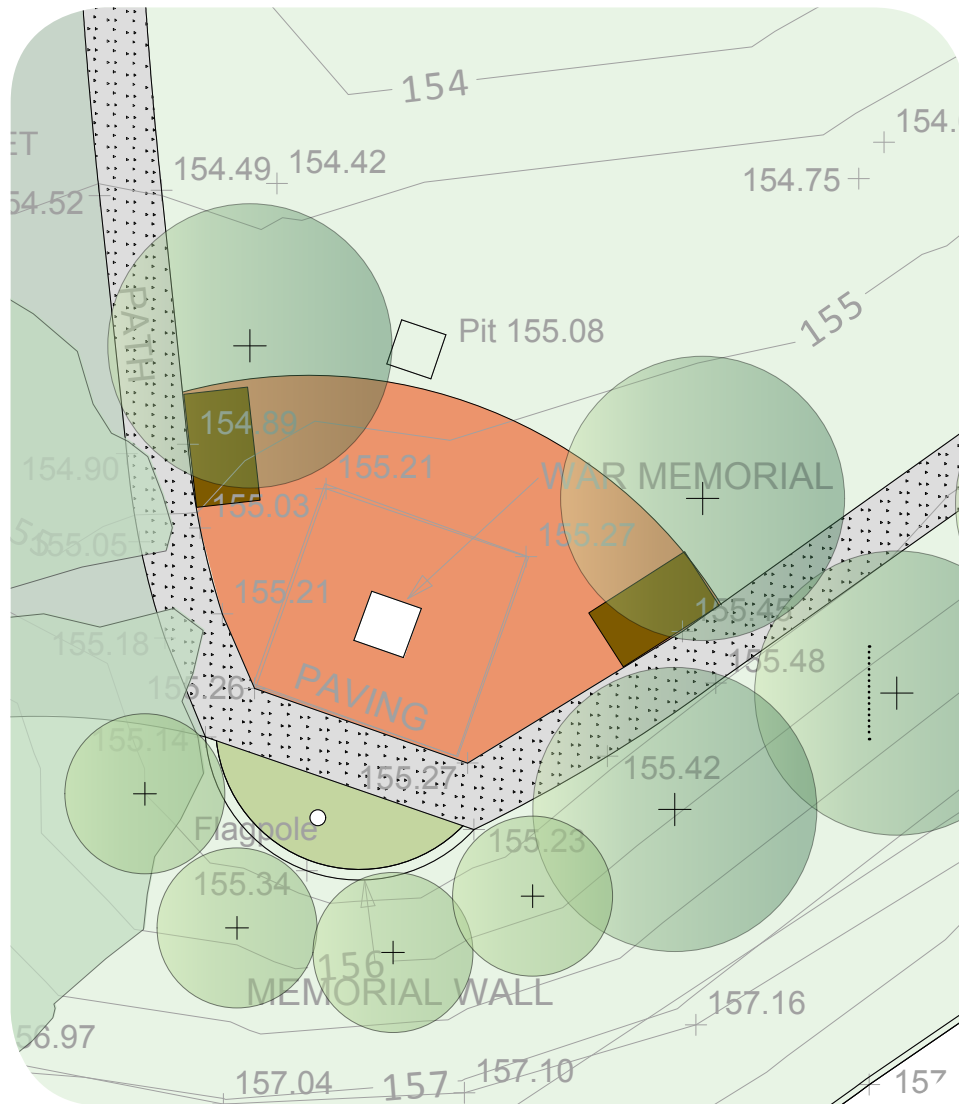


*Dianella Little Jess*

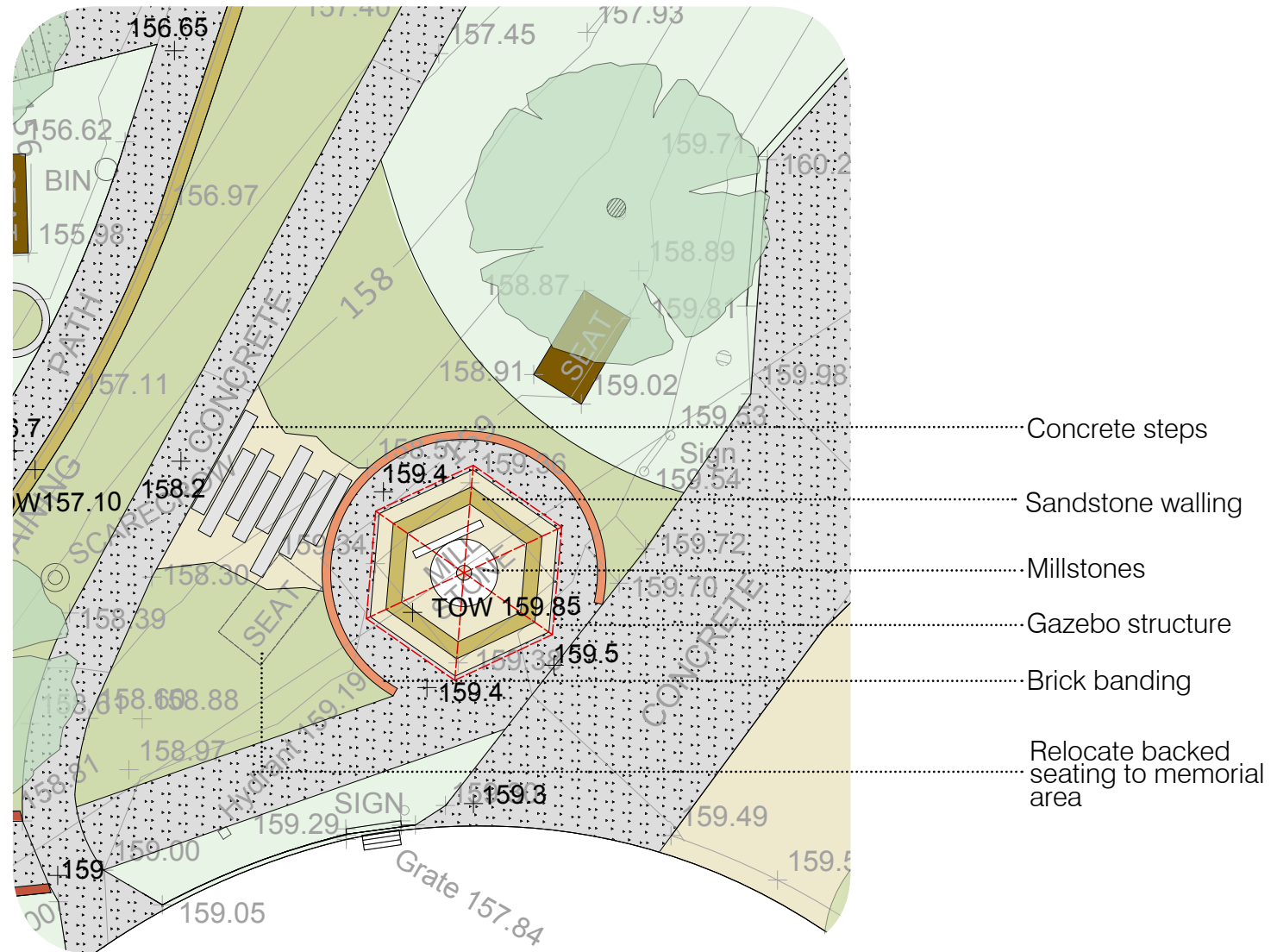




Montage: Mill Stones with Gazebo structure



1 Memorial area detail plan



2 Millstone heritage interpretation area detail plan



# Materials and Planting - Stage Alternatives 1 & 2

## Stage Alternatives

Two stage alternatives have been proposed for the existing stage area.

Option one shows a formalising of the existing gravel site through providing a built sandstone retaining wall edge treatment to the south eastern, allowing for a level grassed performance area. Option one allows for;

- Level area for bump in performance trucks and stage for the 4 yearly performances,
- Level picnic grassed area with informal seating during 'non performance' times, and
- Easy access for trucks and stage.

Alternative two depicts option one plus an additional permanent custom shelter design with concrete pad placed to the upper level. This stage would provide the park with a year round shade and shelter to the performance space catering beyond the four annual performances. This option allows for;

- Permanent performance space to cater for large events,
- Incidental performance space - music / school bands, and
- Shelter and shade for parties and family gatherings in the park all throughout the year.

The study team notes that should option two be preferred for the millstone and memorial area in the upper park, this area may also be used for the purposes of incidental performance space - music / school bands and as a gathering space.

## Materials and Furniture

A robust set of materials has been selected which supports Kurrajongs existing character as a rural township area at the foot of the Blue Mountains.

Performance space;

- Sandstone retaining walls and grass for the leveled stage area

Shelter structure;

- The structural elements proposed hot dip galvanized steel, feature column inserts of Australian Ironbark, Colourbond™ shale grey colour roof sheeting, and a signature Woodland Grey colour gutter.

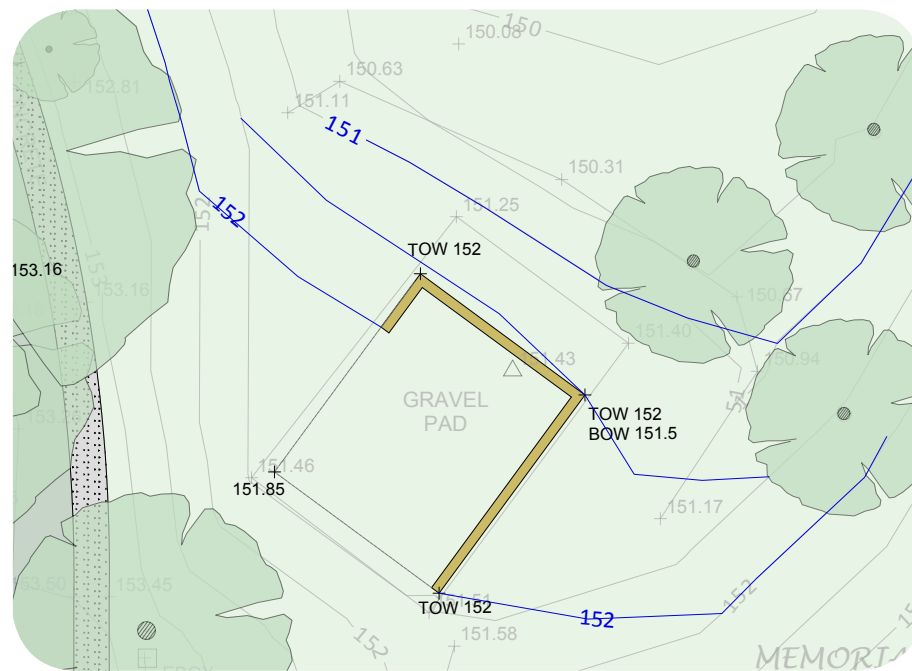
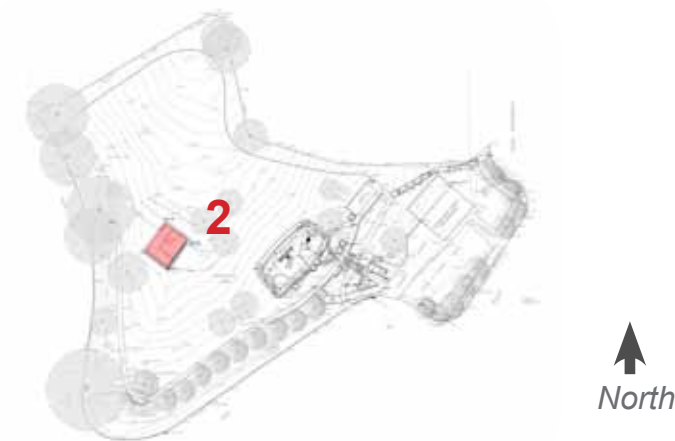
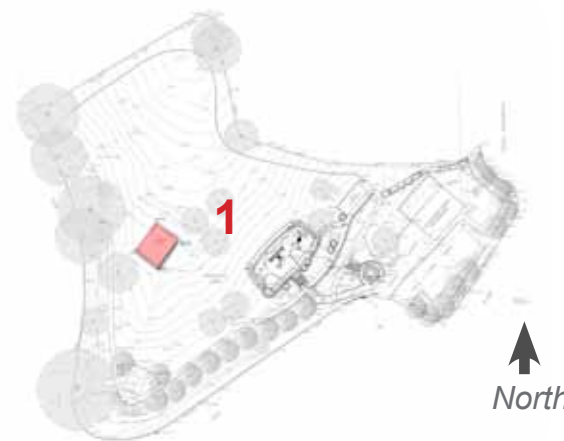


Woodland Grey®

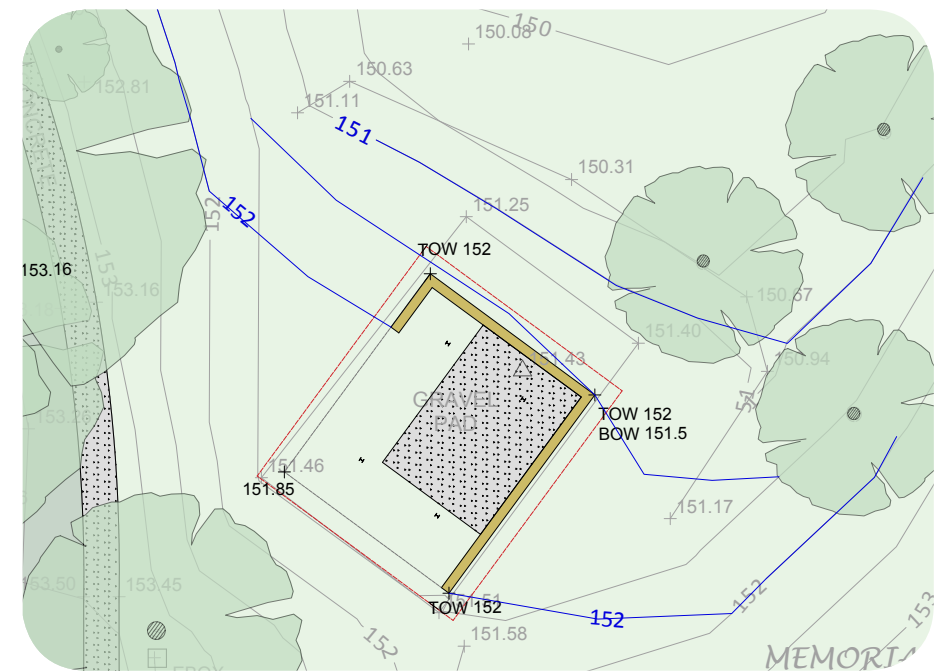


Shale Grey™

Colourbond roof and gutter colours



Stage detail plan - option 1



Stage detail plan - option 2



Sandstone retaining sitting wall to levelled stage area



Fleetwood custom shelter to stage area