

# Make your own rain gauge

## What is a rain gauge?

A rain gauge is a tool that lets us measure how much rain has fallen from the sky. It's very helpful to measure rainfall. It can help us understand when to water our outdoor plants or prepare for drought or flooding.

Knowing the amount of rainfall is also very helpful for farmers. Every plant has its own ideal amount of rainfall that it needs to stay healthy. So, measuring rainfall can help farmers know when to grow certain plants.

*Let's make our own rain gauge! Find out how below.*

## What you will need:

- Bottle (a large, smooth bottle with straight edges is best for accurate measuring!)
- Ruler
- Masking tape
- Marker
- Scissors
- Water

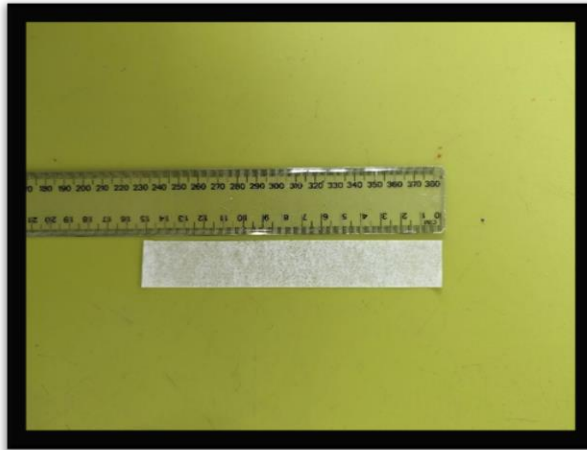


## What to do:

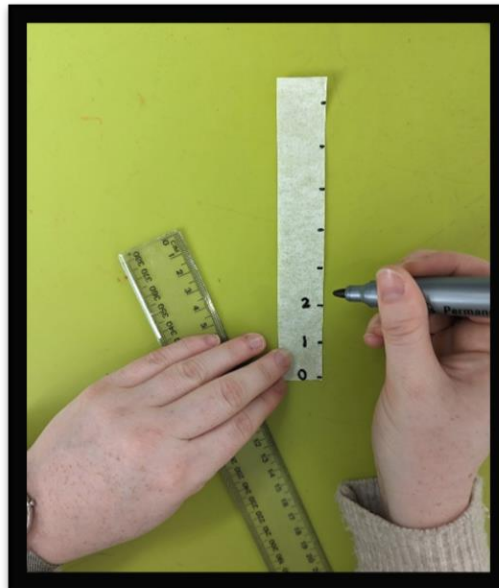
1. Ask an adult to cut off the top of the bottle. Set the top of the bottle aside for later.



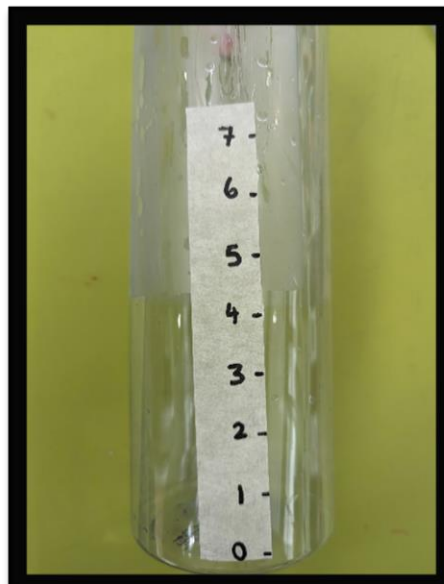
2. Cut a long piece of masking tape (about 15cm) and attach it to the desk in front of you. Using your ruler and marker, mark every 2cm along the piece of masking tape.



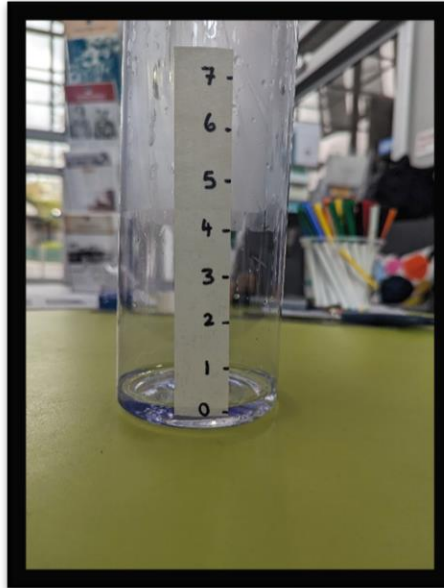
3. Starting from zero, label your measurements along the piece of masking tape.



4. Attach the tape to the bottle, making sure the 'zero mark' is just above the ridges at the bottom of the bottle.



5. Because bottles aren't flat on the bottom, we need to pour a bit of water into our bottle to have a flat, even surface to begin measuring rainfall from. This will mean our measurements are more accurate!  
Set your bottle on a level surface and pour in water until it reaches the 'zero mark' on the tape.



6. Take the cap off the top of your bottle, turn it upside down, and insert it into the bottom part of the bottle. Now you're ready to measure rainfall!



**Did you know?**

A scientist who studies the weather is called a **meteorologist**.

## How to use your rain gauge to measure rain

- Take your rain gauge outside and place it on a level surface.
- Make sure there are no trees or other things that might block rain from entering your gauge.
- Check your rain gauge 24 hours later.
- The marks on the rain gauge tell you how many centimetres of rain have fallen. Use the rain gauge to measure how the amount of rainfall in the last 24 hours.



### Did you know?

John Tebbutt was a scientist from Windsor who studied local weather. He measured the rainfall and temperature in Windsor at the same time every day, for more than 50 years!

His records helped us to better understand Windsor's **climate**. Climate describes the patterns in weather over a period of 30 years or more.