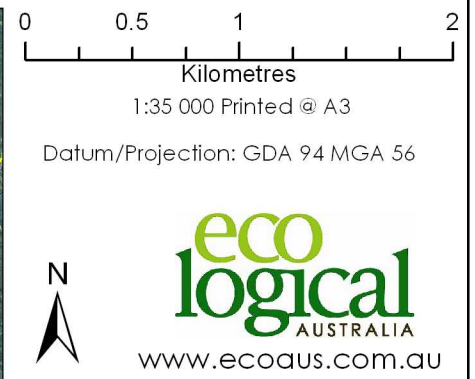
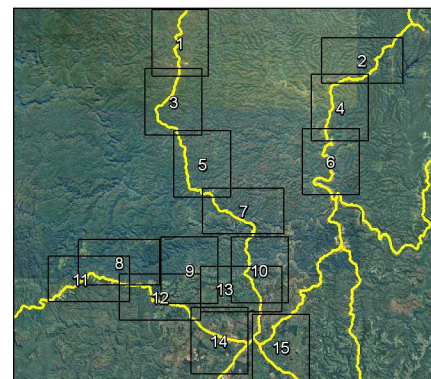


## Conservation Priority and Vegetation Condition - Map 4

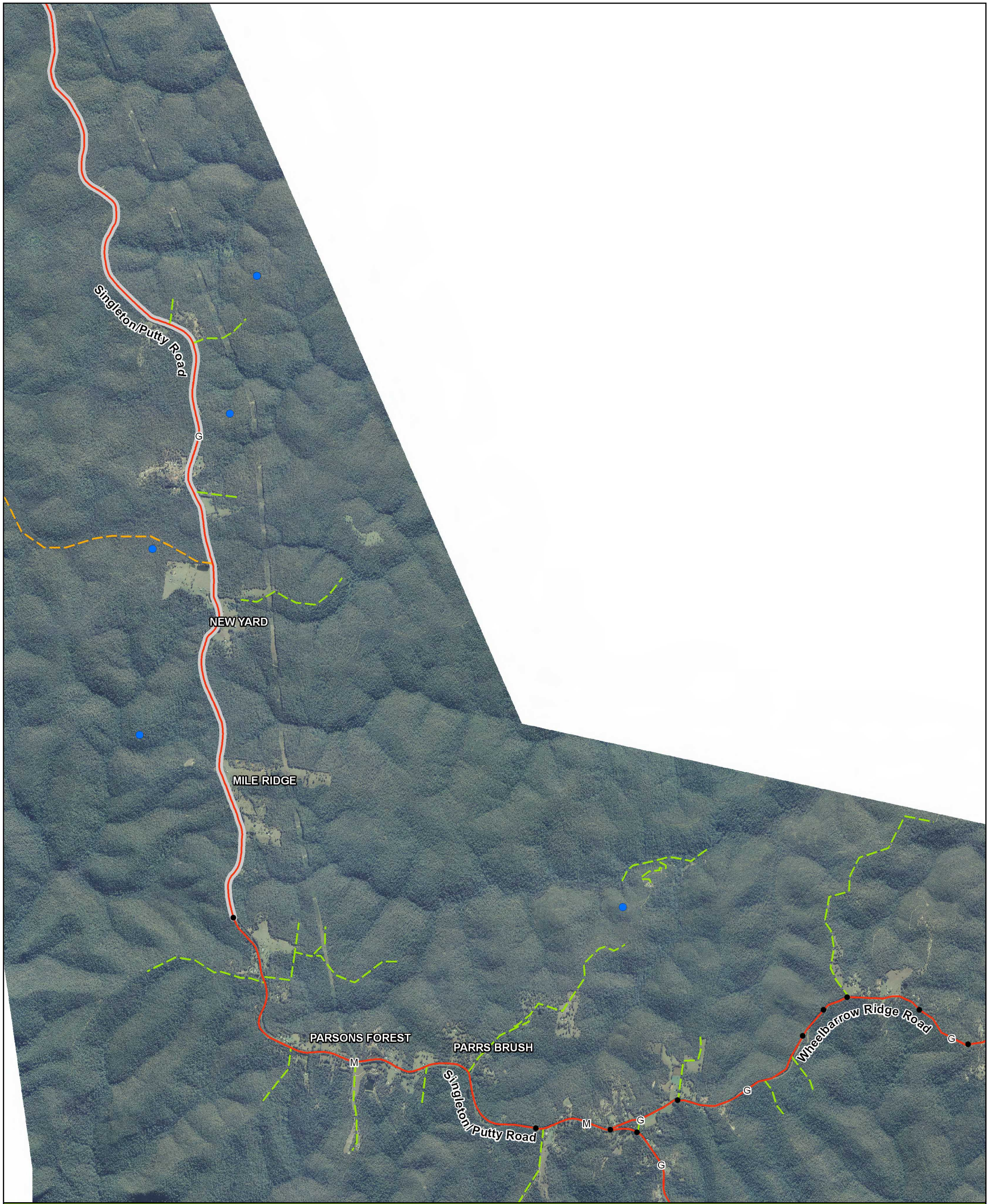
Hawkesbury City Council

### Legend

<b>Roads</b>	<b>Threatened Flora</b>	<b>Conservation Priority</b>	<b>Condition</b>
— Surveved	■ Acacia pubescens (ELA)	— High	G Good
- - - Not Surveved	■ Grevillea junipera subspecies junipera (ELA)	— Medium	M Medium
	● Acacia pubescens (DECCW)	— Low	P Poor
	● Grevillea juniperina subsp. juniperina (DECCW)		
	● Other (DECCW)		







## Conservation Priority and Vegetation Condition - Map 5

Hawkesbury City Council

### Legend

#### Roads

- Surveyed
- Not Surveyed

#### Significant Weeds Present

- Hyparrhenia hirta*

#### Threatened Flora

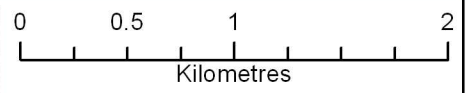
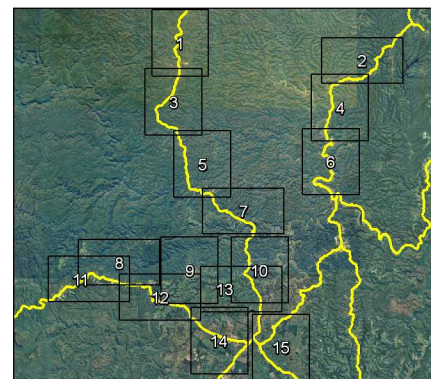
- Acacia pubescens* (ELA)
- Grevillea juniperina subsp. juniperina* (ELA)
- Acacia pubescens* (DECCW)
- Grevillea juniperina subsp. juniperina* (DECCW)
- Other (DECCW)

#### Conservation Priority

- High
- Medium
- Low

#### Condition

- Good
- Medium
- Poor



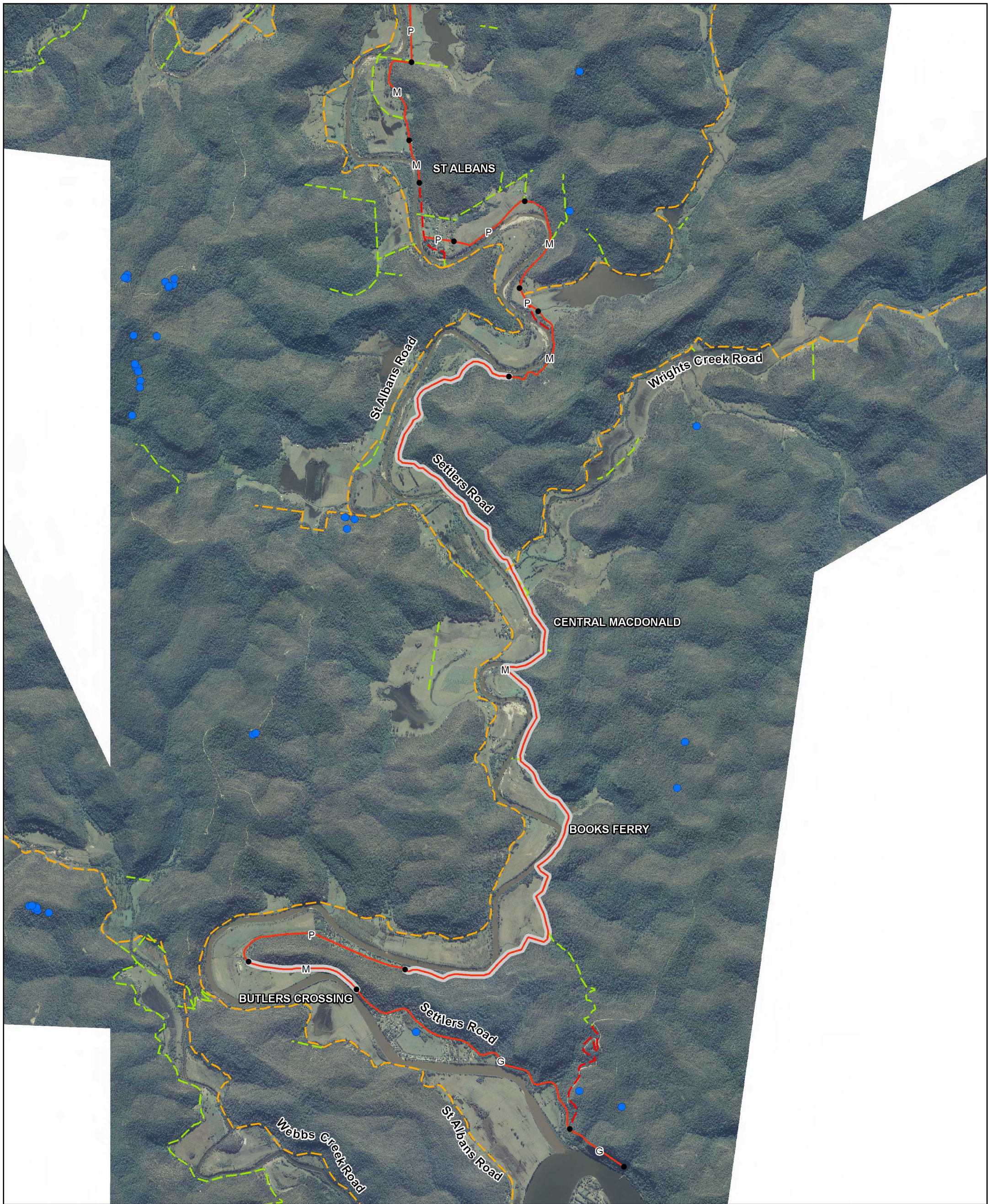
1:35 000 Printed @ A3

Datum/Projection: GDA 94 MGA 56



**eco**  
**logical**  
AUSTRALIA  
www.ecoaus.com.au



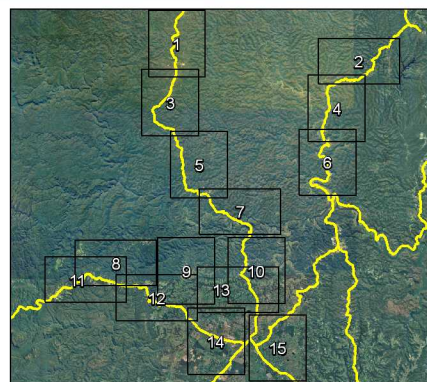


## Conservation Priority and Vegetation Condition - Map 6

Hawkesbury City Council

### Legend

<b>Roads</b>	<b>Threatened Flora</b>	<b>Conservation Priority</b>	<b>Condition</b>
— Surveyed	■ Acacia pubescens (ELA)	— High	G Good
- - - Not Surveyed	■ Grevillea junipera subspecies junipera (ELA)	— Medium	M Medium
<b>Significant Weeds Present</b>	● Acacia pubescens (DECCW)	— Low	P Poor
■ <i>Tradescantia fluminensis</i>	● Grevillea juniperina subsp. juniperina (DECCW)		
	● Other (DECCW)		



0 0.5 1 2  
Kilometres  
1:35 000 Printed @ A3  
Datum/Projection: GDA 94 MGA 56

**eco logical**  
AUSTRALIA  
www.ecoaus.com.au