

Be a community sharps....



What to do if you receive a needlestick injury

- ✓ Stay calm
- ✗ Do not squeeze the wound. If it bleeds, allow it to bleed while you wash it
- ✓ Wash the wound with soap and water. Nothing stronger is required
- ✓ Pat dry the wound and apply a sterile dressing such as an adhesive plaster
- ✓ Contact your doctor or go to the Emergency Department of the nearest public hospital

The risk of acquiring a serious infection as a result of an accidental injury from a community sharp is extremely low, however you should still seek medical advice.



For more information about needlestick injuries call the HIV Information Line on 1800 451 600.

For more information about community sharps call the NSW Needle Clean Up Hotline on 1800 633 353.

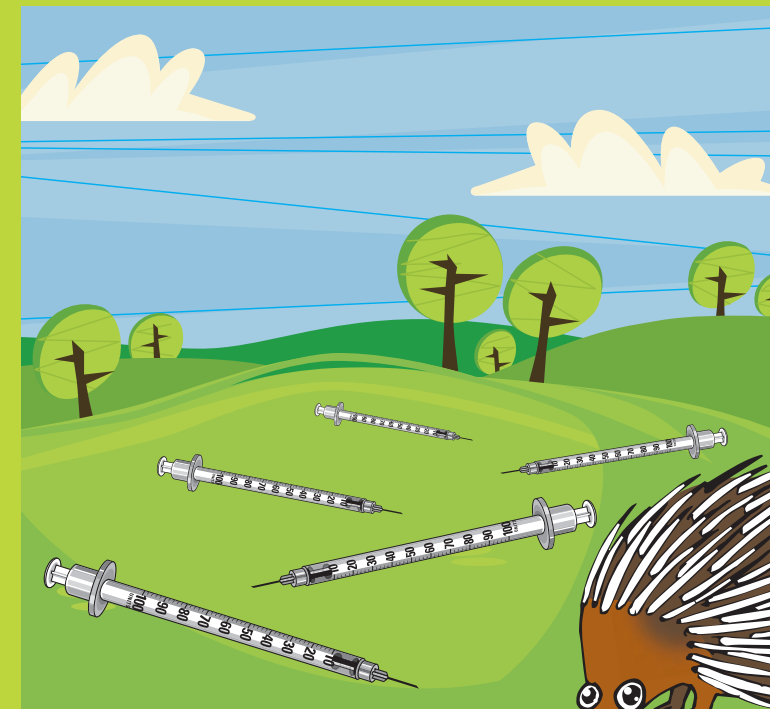
NSW HEALTH



Community sharps disposal in NSW

What to do if you find used needles and syringes

What to do if you receive a needlestick injury



...Safety Stickler

BD's "Spike the echidna" reproduced with the permission of Becton, Dickinson Pty Ltd. BD© 2004

NSW HEALTH

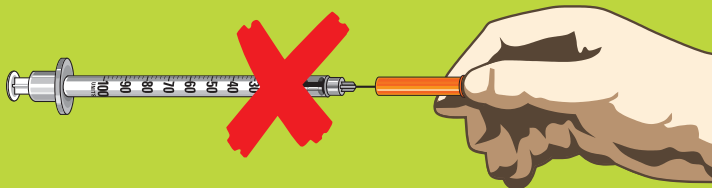


What to do if you find used needles or syringes

Needles and syringes (community sharps) are sometimes discarded unsafely and you may find this injecting equipment in your local community.

If you do not feel comfortable picking up needles and syringes please call the Needle Clean Up Hotline on 1800 633 353 to arrange for collection. If you are prepared to pick up needles and syringes please use the following information as a guide.

- ✓ Preferably wear gloves if available
- ✓ Preferably use an implement such as pliers, tongs or an “easy reacher” tool to pick up the needles and syringes by the plastic barrel or plunger
- ✗ Do not attempt to recap or touch the point of the needle and syringe



- ✓ Place a sharps container or a puncture resistant, screw top plastic container on a stable, level surface close to the needle and syringe (avoid using glass bottles which can break and aluminium cans which can be easily crushed)
- ✓ Hold the needle and syringe by the plastic barrel or plunger. Place the needle and syringe sharp end first into the container and seal the lid (do not hold the container while doing this)



- ✓ Dispose of the container at a community sharps disposal facility. Contact the Needle Clean Up Hotline on 1800 633 353, or your local council for the location of safe disposal facilities in your area. A safe disposal service is also available at public hospitals
- ✓ Tell children never to pick up community sharps but to call an adult
- ✗ Never put community sharps (either loose or in any type of container) in recycling bins because of the high risk of injury to workers – plastic syringes are not recyclable

