

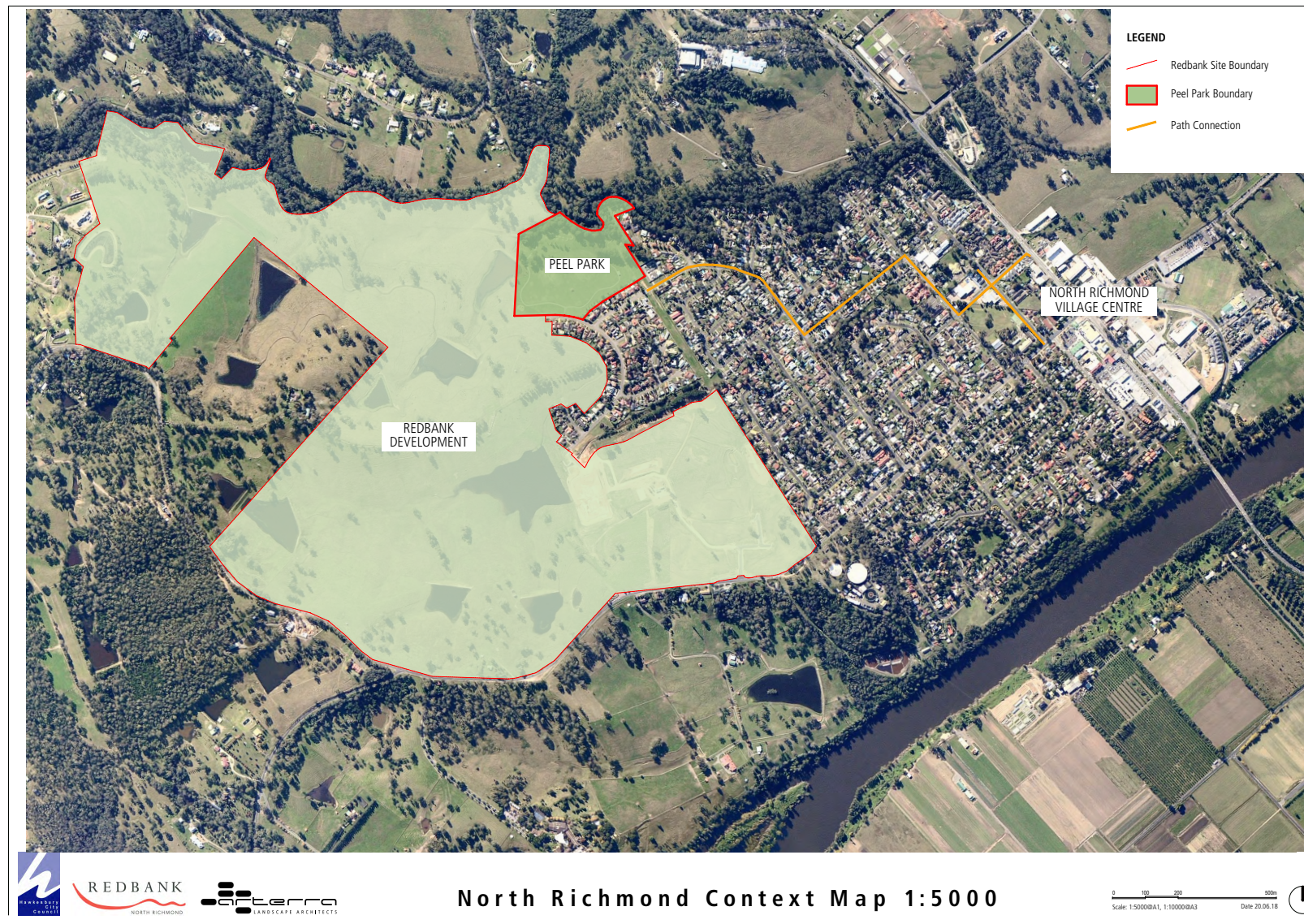
# Site Analysis

---



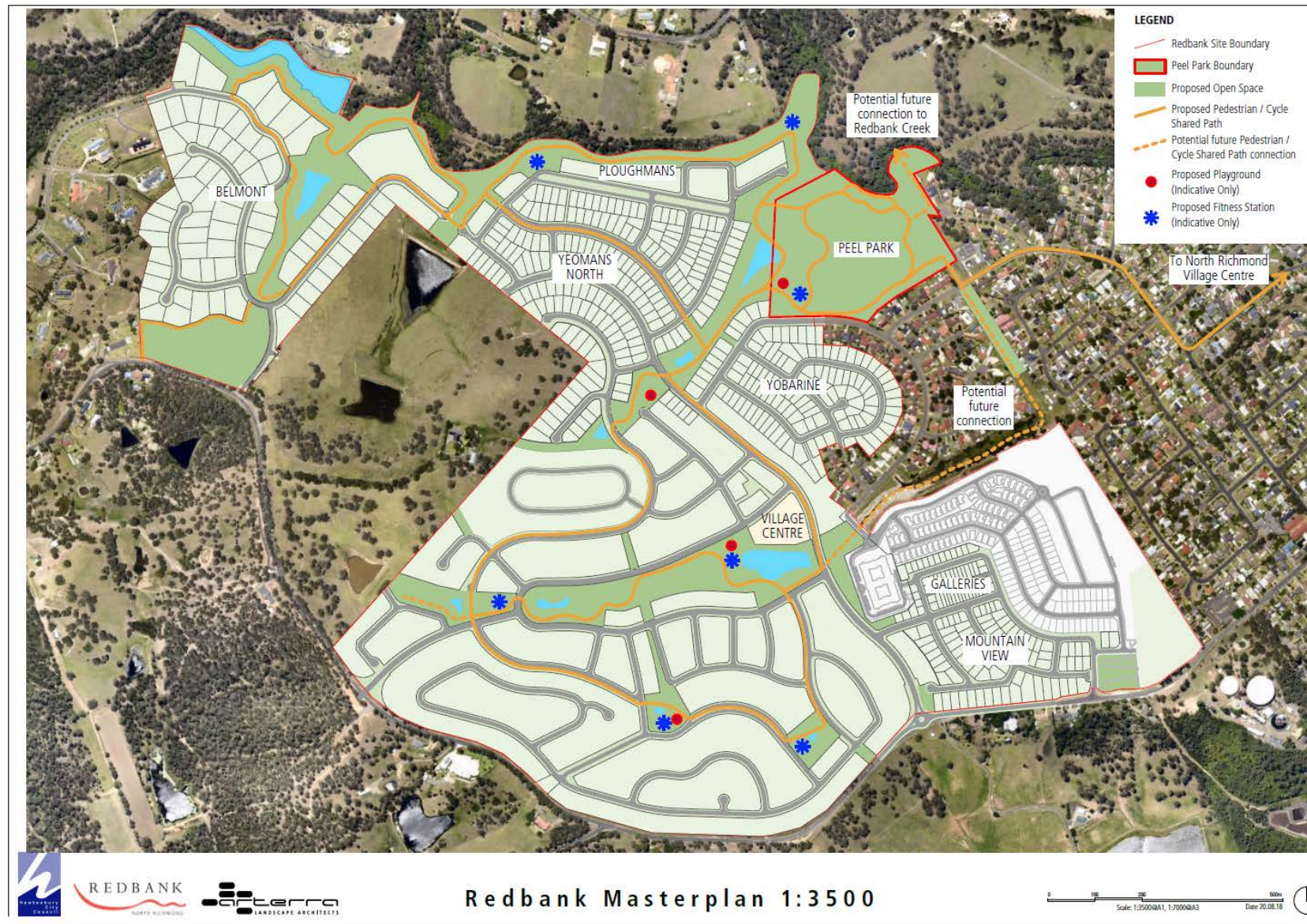


# North Richmond Context Plan





# Redbank Masterplan





## Existing Peel Park Masterplan Site

---





# Existing Peel Park Masterplan Site

---



View across existing cricket fields towards Redbank Creek



Stand of Native Trees



High Value Paddock Tree with dog off-leash area in background



View Over adjacent dam toward future playground and picnic area



Sports Amenity building and kiosk



High Value Paddock Tree with dog off-leash area in background



# Site Constraints

---

Peel Park is a 9.4ha park, however only 4.8 ha of the site remains unconstrained.

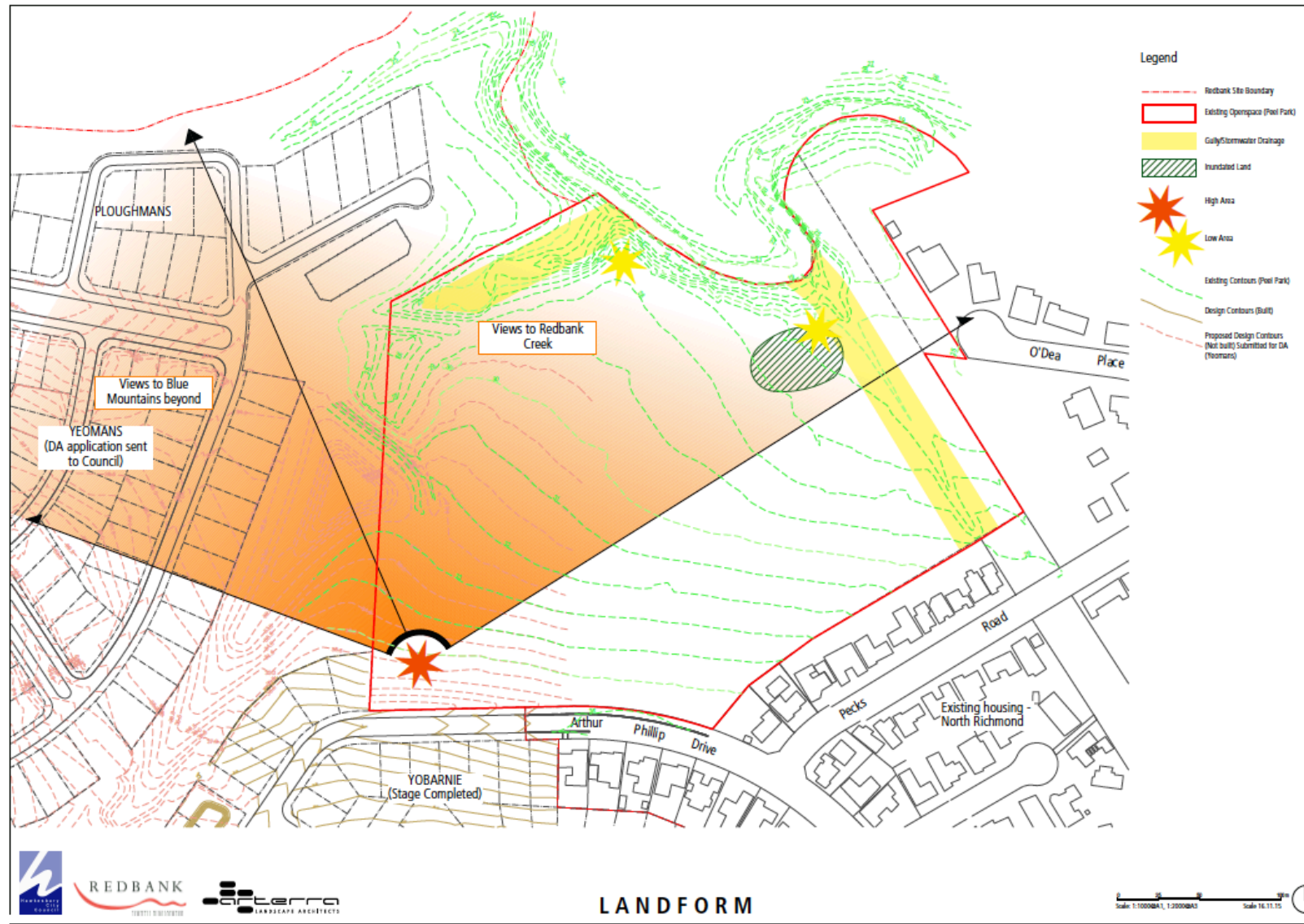
There are existing constraints onsite that restrict usage, including:

- 3 electricity easements
- 1 drainage easement
- Riparian corridor
- Native vegetation
- Buffers to adjoining properties
- Slope/terrain



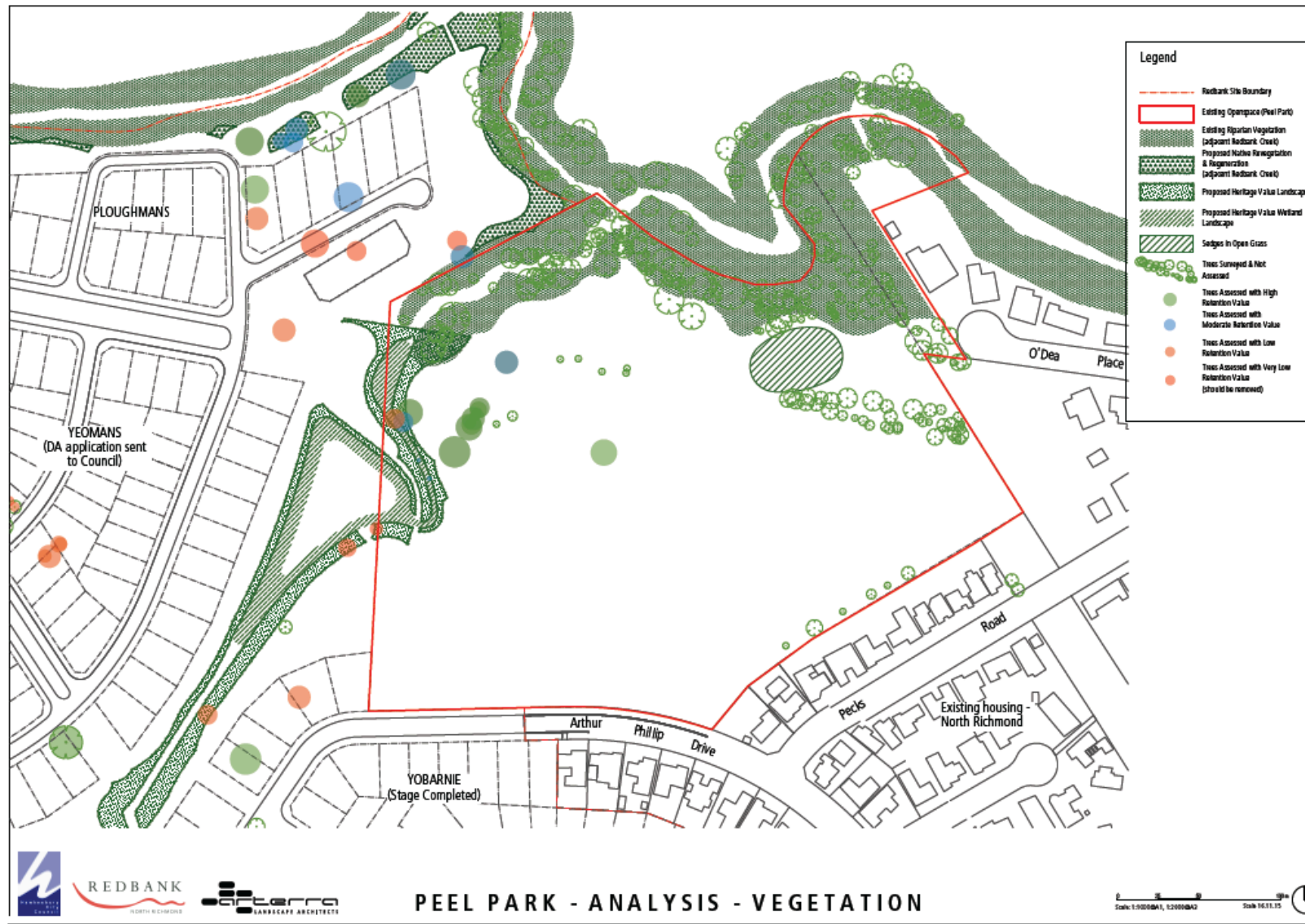


# Peel Park Current Landform



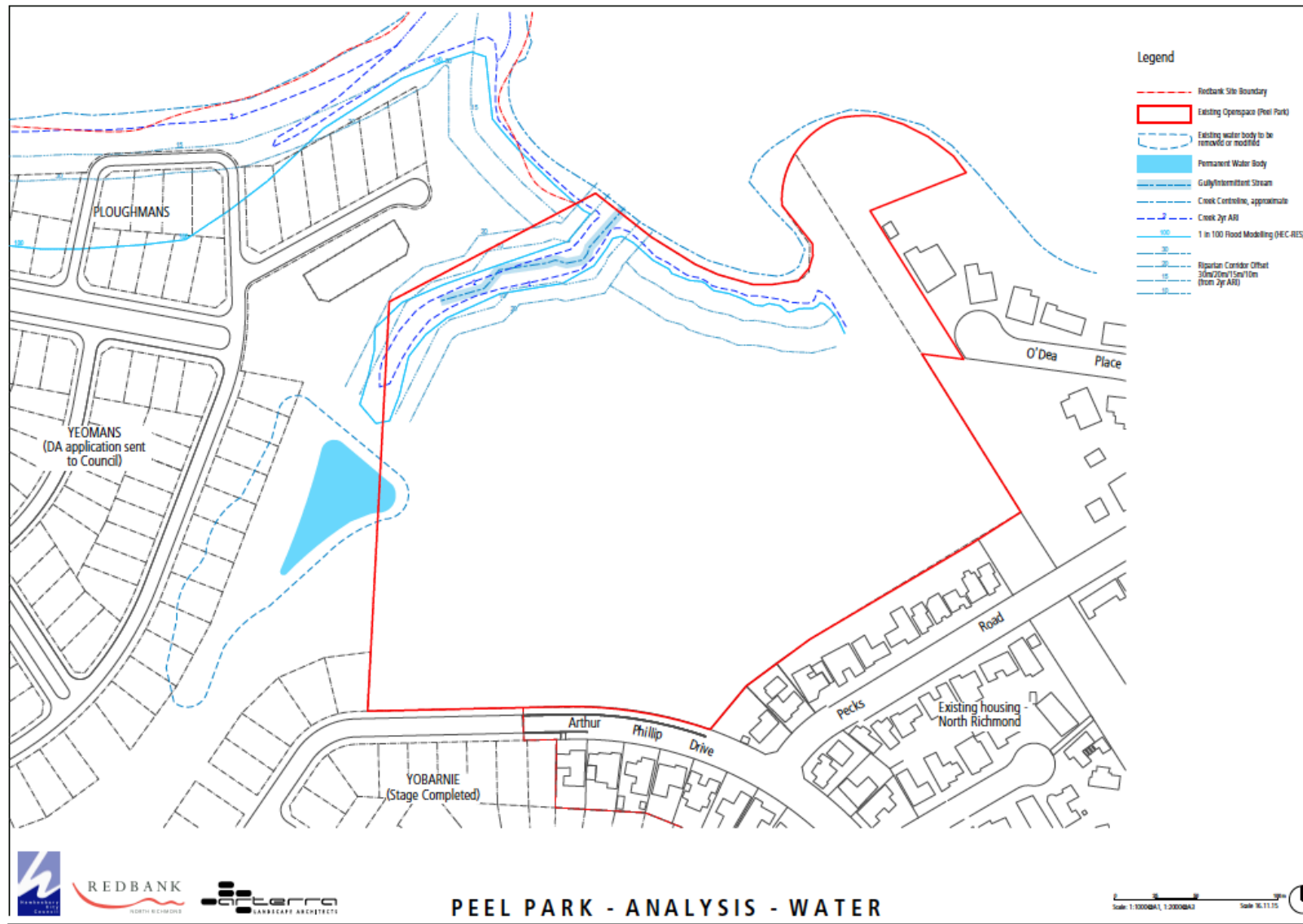


# Peel Park Vegetation Analysis



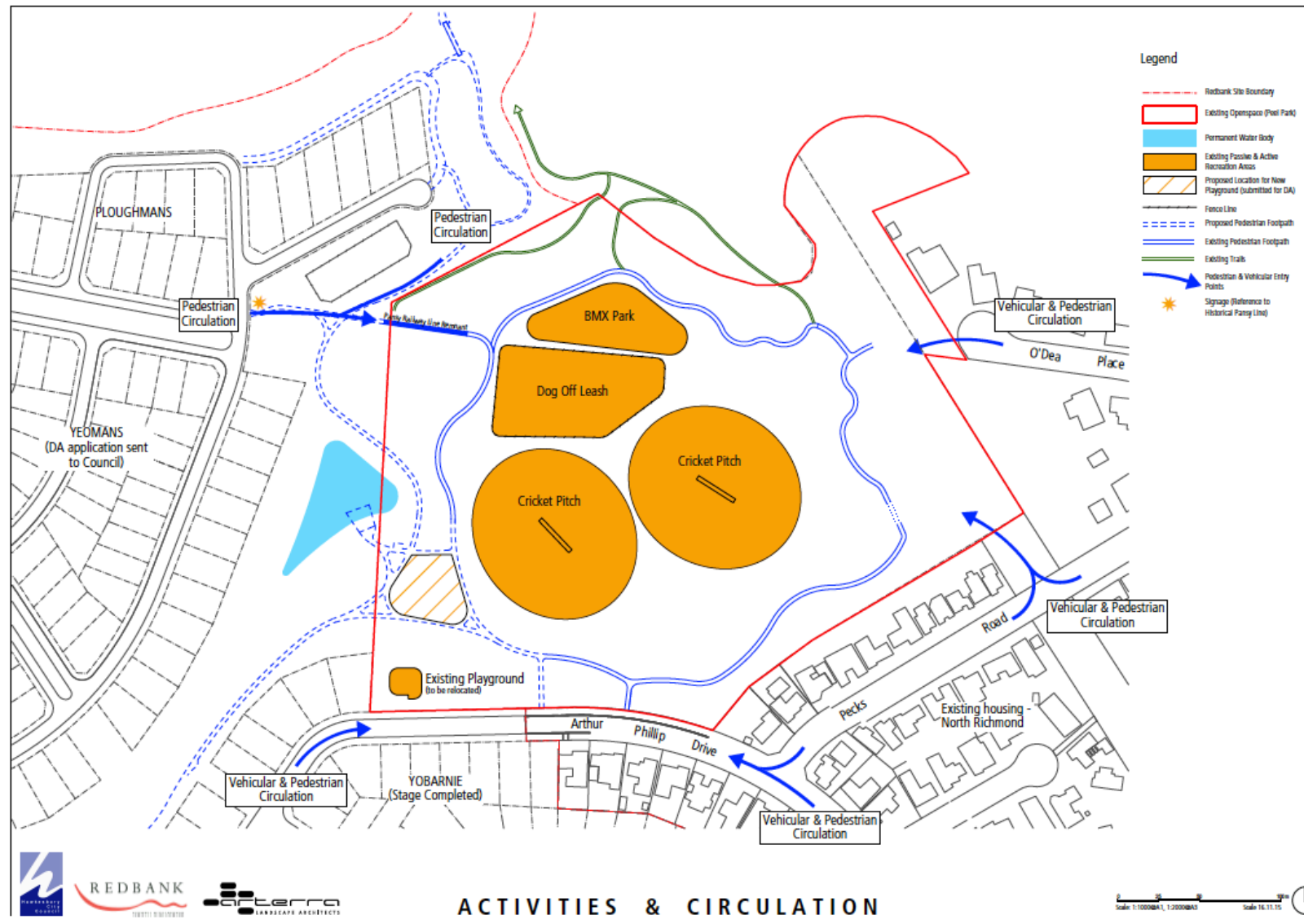


# Peel Park Water Analysis



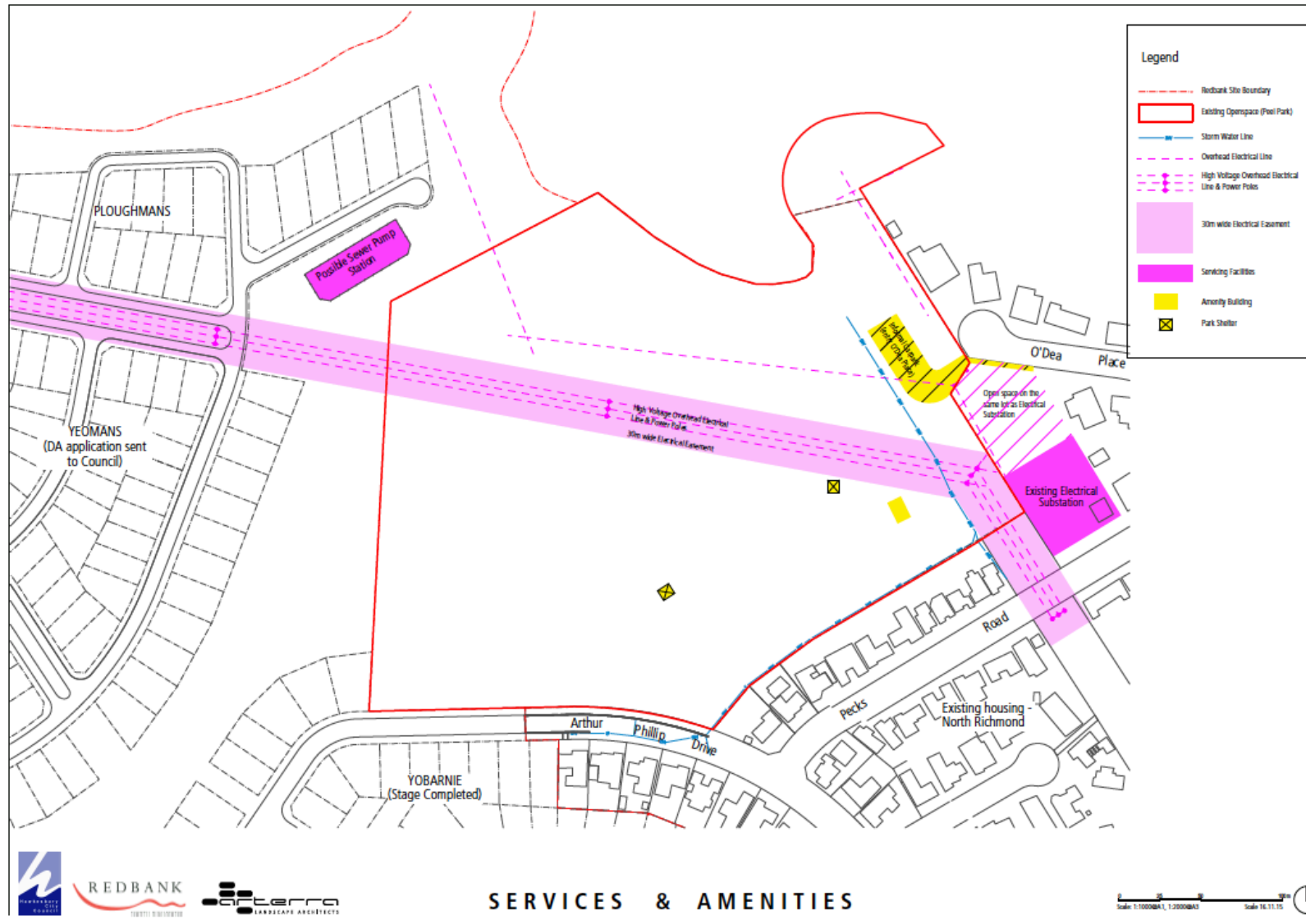


# Peel Park Current Activities & Circulation





# Peel Park Current Services & Amenities





# Final Draft Masterplan

---







## **Draft Masterplan Vision**

Peel Park will be a place for all members of the community to enjoy a range of recreation, leisure and sporting activities, whilst retaining the natural, rural and cultural values of the site.



# Key Principles

---

## People

- Encourage social interaction and engagement
- Ensure human activity interacts positively with natural processes
- Restrict impact on adjoining residents
- Ensure safe access and egress

## Facilities

- Develop a multi-use park which balances the provision of sport, recreation and nature spaces
- Ensure maintenance requirements are considered and integrated into the initial design process
- Provide recreation and leisure facilities for all ages and abilities
- Ensure that facilities provide for balanced use – active and passive recreation
- Provide areas suitable for sport training and junior competition which can accommodate winter and summer sports
- Provide inter-connected yet age appropriate informal play and adventure activities

## Environment

- Integrate and enhance existing bushland, landscape and geographic features in site design
- Retain and celebrate natural and cultural heritage values
- Retain existing park character – low key, rural character

# Training Use

---

Peel Park has been designated as a training and junior competition sporting space due to the following constraints:

- Too small
- Feeder roads not compatible
- Noise
- Insufficient parking
- Cannot level fields sufficiently without compromising the integrity of the park

# Objectives

---

## Sport and Recreation

- Provide a place for older adults to exercise
- Enhance the existing BMX track and provide a place for younger children to learn to ride
- Provide for two junior cricket fields
- Level sporting fields enough so that they can be used for junior sport and training with a graded surface to ensure safe footing
- Provide lighting to sports fields for training purposes
- Provide storage for sporting equipment and canteen
- Provide an active sporting hub with seating and shade for spectators

## Culture and Play

- Provide places for young children and youth to play informally
- Include opportunities for nature play
- Provide public art that engages and contributes to placemaking

## Improved Amenities

- Increase amenities and picnic facilities for informal gatherings of groups
- Improve shade cover
- Provide toilets near the picnic/play area that are open to the public
- Ensure parking is provided which matches the carrying capacity of facilities and settings
- Adopt sustainability principles within design to ensure efficient use of resources (water, electricity etc) including water sensitive urban design principles

## Open Green Space

- Provide access to water
- Retain bushland areas and high value trees

## Access and Pathways

- Provide connections and improvements with pedestrian / cycleway
- Provide lighting to high use areas to ensure safe access and egress
- Maximise community access
- Investigate traffic management or traffic calming to enhance safety for cyclists and pedestrians



# Draft Masterplan Inclusions

---

## Sporting Use

- Sporting fields in flexible configuration for summer and winter sport
- No permanent goal posts
- Two cricket pitches
- Training facilities for soccer and rugby
- Graded sports field area at 1:50 to provide a safer and more usable playing surface.
- Sporting area capable of accommodating two junior cricket fields and modified fields for winter sports
- Sports field lighting (design and location is to be determined but must be to Australian Standards for training purposes and is to minimise light spill and glare)
- Irrigated sports field
- Multi-use hardcourt

## Pedestrian Access & Pathways

- New pedestrian entry points off Pecks Road and Arthur Phillip Drive
- Upgraded existing paths
- Circuit path around Peel park to be accessible shared pedestrian and cycle path
- Pathways to link into wider Redbank Network

## Parking

- Sufficient provisions for sporting and general use
- Multiple options to disperse traffic and access various parts of the park
- Formalised and sealed car parks off O'Dea Place, Pecks Road and Arthur Phillip Drive

## Dog Off-Leash Area

- Fenced
- Provide shelter and seats

## Amenities

- Shade
- Toilet including disability access

- Upgraded sports amenities building including a new sports storage area
- A hub with paving, seating and shade trees
- Some seating to be incorporated into the embankment

## Informal Recreation & Play Areas

- Upgraded and expanded playground to better connect with BMX area and to incorporate junior and senior play areas, fitness area, toilets and picnic facilities
- Play area to incorporate shade, fencing, seating, proprietary play equipment , nature play
- BMX track retained and relocated
- Informal spaces for kick-a-bout and play
- Fitness station
- Heritage interpretation – Pansy line

## Environment

- High value trees retained
- Existing bush track to be retained and upgraded where required
- Weed removal and vegetation regeneration to be carried out in bushland areas
- Shade trees and landscaping
- "Wet Meadow" retained

# Funding

---

The Masterplan will be funded in large part by the developer – Redbank Communities, with Council funding residual items as funding allows.





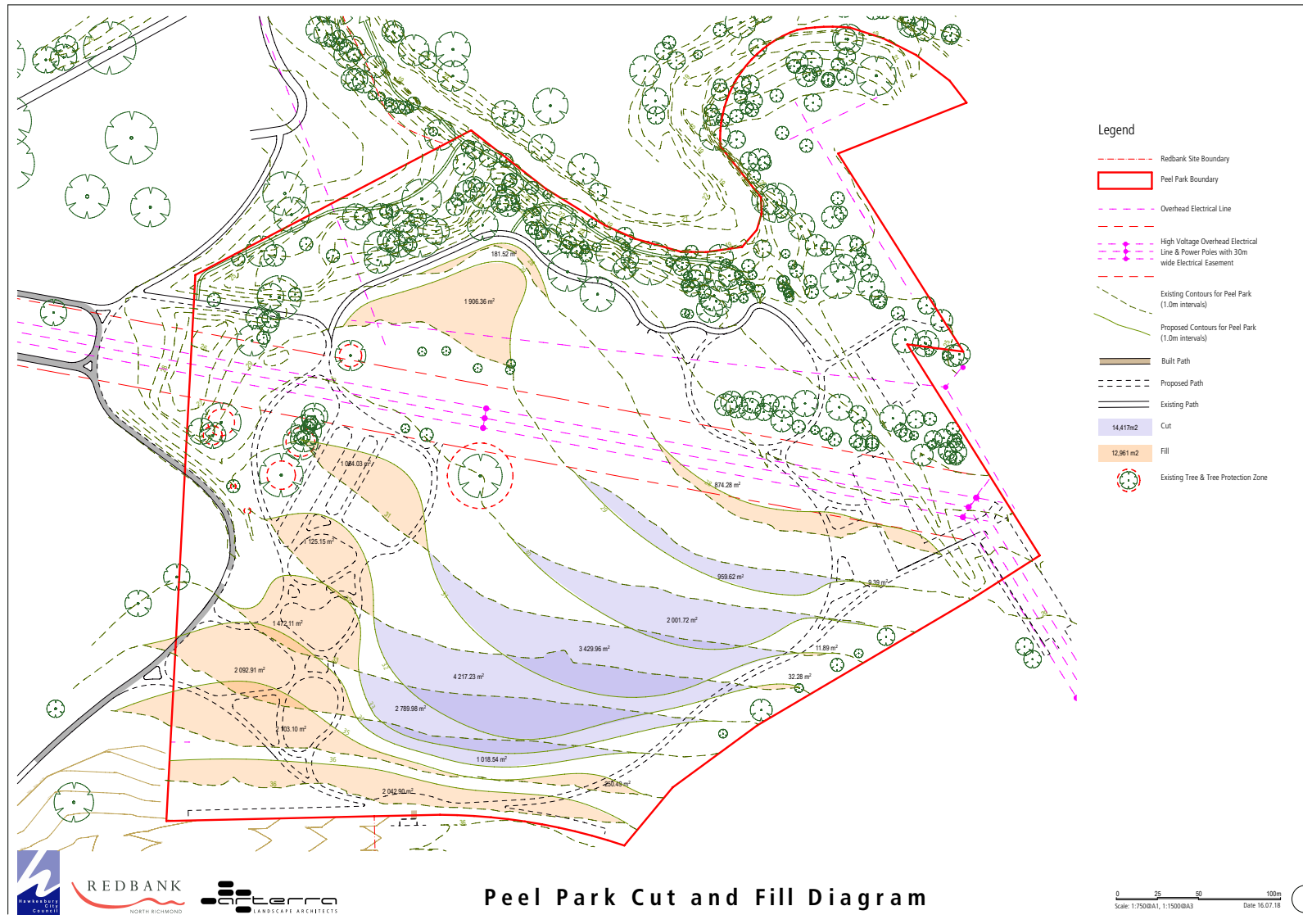


# Peel Park Final Draft Masterplan - Sports Field Line Markings





# Peel Park Final Draft Masterplan - Cut & Fill



# Peel Park Final Draft Masterplan - Cross Sections

