

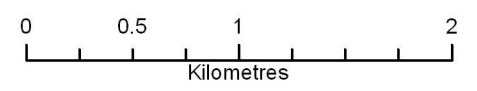
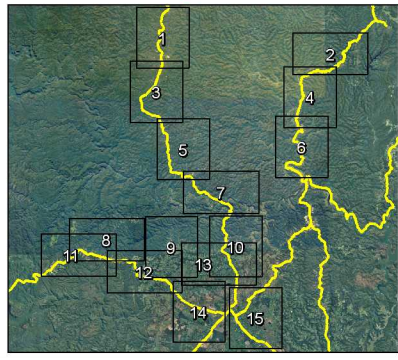
Legend

- Roads**
- Surveyed
 - - - Not Surveyed
- Significant Weeds Present**
- Chrysanthemoides monilifera* subsp. *monilifera*; *Tradescantia fluminensis*
 - Tradescantia fluminensis*

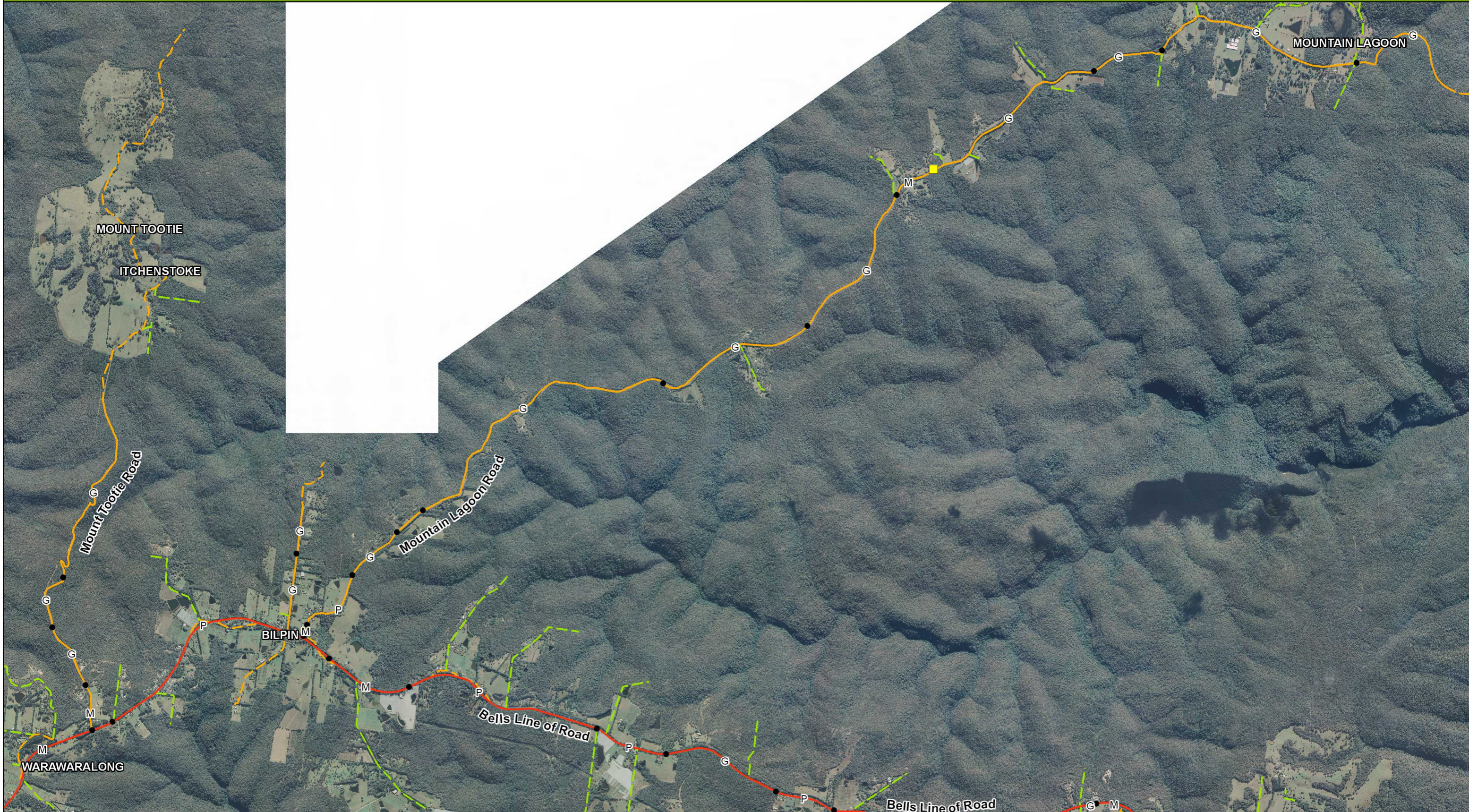
- Threatened Flora**
- Acacia pubescens* (ELA)
 - Grevillea junipera* subsp. *junipera* (ELA)
 - Acacia pubescens* (DECCW)
 - Grevillea juniperina* subsp. *juniperina* (DECCW)
 - Other (DECCW)

- Conservation Priority**
- High
 - Medium
 - Low

- Condition**
- G Good
 - M Medium
 - P Poor

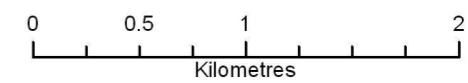
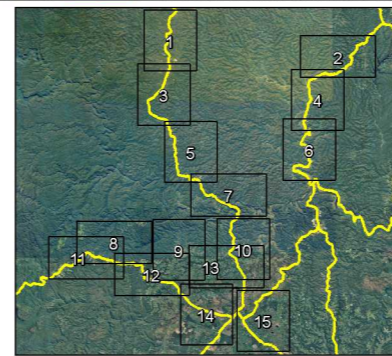


1:35 000 Printed @ A3
Datum/Projection: GDA 94 MGA 56



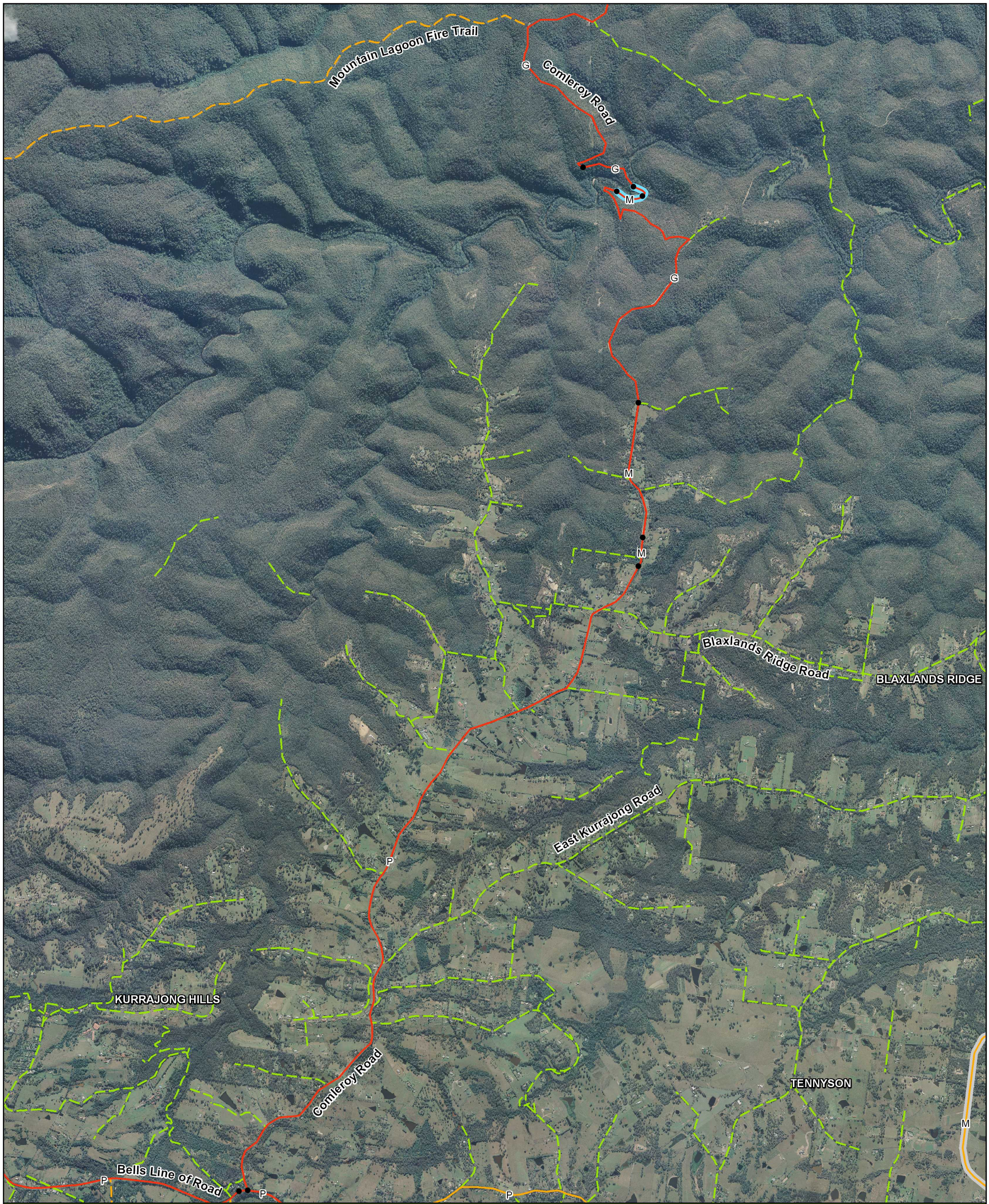
Legend

| | | | |
|--------------------|--|------------------------------|------------------|
| Roads | Threatened Flora | Conservation Priority | Condition |
| — Surveyed | ■ Acacia pubescens (ELA) | — High | G Good |
| - - - Not Surveyed | ■ Grevillea junipera subsp. junipera (ELA) | — Medium | M Medium |
| | ■ Acacia pubescens (DECCW) | — Low | P Poor |
| | ■ Grevillea juniperina subsp. juniperina (DECCW) | | |
| | ■ Other (DECCW) | | |



1:35 000 Printed @ A3

Datum/Projection: GDA 94 MGA 56



Conservation Priority and Vegetation Condition - Map 9

Hawkesbury City Council

Legend

Roads

— Surveyed

- - - Not Surveyed

Significant Weeds Present

— *Cinnamomum camphora*

— *Tradescantia fluminensis*

Threatened Flora

■ *Acacia pubescens* (ELA)

■ *Grevillea juniperina subsp. juniperina* (ELA)

● *Acacia pubescens* (DECCW)

● *Grevillea juniperina subsp. juniperina* (DECCW)

● Other (DECCW)

Conservation Condition Priority

— High

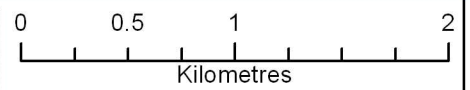
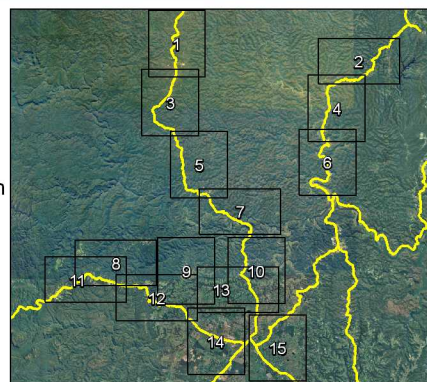
— Medium

— Low

G Good

M Medium

P Poor



1:35 000 Printed @ A3

Datum/Projection: GDA 94 MGA 56



eco
logical
AUSTRALIA

www.ecoaus.com.au