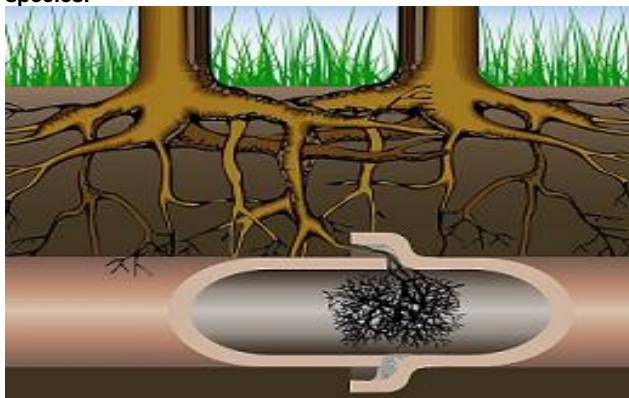


## What do root systems do?

Root systems supply the plant with water and nutrients, essential for the plants survival. Root systems will often find old and cracked/damaged sewer pipes, as these are perfect food sources. Roots continue to grow inside these pipes, causing blockages and leading to sewer overflows and flooding. The extent of the root systems varies between species.



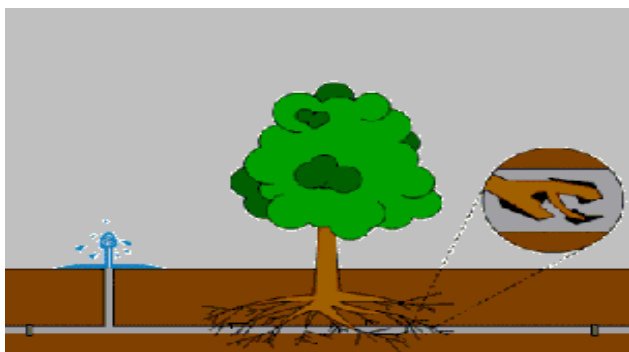
### Prevention is better than cure!

Choosing appropriate plant species for your garden is very important – prevention is far better than cure!

Before you plant trees, make sure you know where sewer pipes and other services are located. More information and sewerage diagrams can be obtained from Council's Customer Service Centre.

Council has compiled a list of popular species planted and their possible potential for damage.

For further information on suitable trees and shrubs, talk to your local nursery



# Hawkesbury City Council Waste Management

Telephone 0245604444

The following plants can be used in residential gardens provided they are no closer than two (2) metres from sewer pipes and other services:

Common Name	Botanical Name
Wattle (small / medium variety)	<i>Acacia spp.</i>
Japanese Maple	<i>Acer palmatum</i>
Orchid Tree, Bauhinia	<i>Bauhinia variegata</i>
Cassia	<i>Cassia spp.</i>
Lemon, Orange, Mandarin	<i>Citrus</i>
Small Eucalyptus	<i>Eucalyptus spp.</i>
Pineapple Guava	<i>Feijoa sellowana</i>
Gardenia	<i>Gardenia spp.</i>
Golden Rain Tree	<i>Koelreuteria paniculata</i>
Crepe Myrtle	<i>Lagerstroemia indica</i>
Apricot, Plum, Cherry	<i>Prunus spp.</i>
Azaleas, Rhododendrons	<i>Rhododendron spp.</i>

The following plants should be placed no closer than four (4) metres from sewer pipes and other services:

Common Name	Botanical Name
Flowering Almond	<i>Amygdalus pollardi</i>
Banksia	<i>Banksia spp.</i>
Silver Birch	<i>Betula pendula (B. alba)</i>
Buddleja	<i>Buddleja spp.</i>
Lemon-flowering Gum	<i>Eucalyptus woodwardii</i>
Maidenhair Tree	<i>Ginkgo biloba</i>
Honey Locust	<i>Gelditsia triacanthos (and cultivars)</i>
Woolum, Native Frangipani	<i>Hymenosporum flavum</i>
Mock Orange	<i>Philadelphus spp.</i>
Chinese Pistachio	<i>Pistacia chinensis</i>
Flowering Pear	<i>Pyrus spp.</i>
Chinese Tallow Tree	<i>Sapium sebiferum</i>
Grape Vines (including Glory Vines)	<i>Vitis spp.</i>

The following plants can block sewers, and cause damage to utilities and structures. Plant them with care in the suburban environment :

Botanical Name	Common Name	Damage Rating
<i>Bougainvillea species</i>	Bougainvillea's	High
<i>Callistemon citron's (C. lanceolatus)</i>	Crimson Bottlebrush	High
<i>Fraxinus ornus</i>	Claret Ash, Manna Ash	High
<i>Grevillea robustus</i>	Silky Oak	High
<i>Grevillea spp.</i>	Grevilleas	High
<i>Ilex species</i>	Hollies	High
<i>Lophostemon confetus</i>	Brush Box, Tristania	High
<i>Magnolia species</i>	Magnolias	High
<i>Melaleuca armillaris</i>	Bracelet Honey Myrtle	High
<i>Nerium oleander</i>	Oleander	High
<i>Phyllostachus species</i>	Bamboos (non-clamping)	High
<i>Wisteria sinensis</i>	Chinese Wisteria	High
<i>Acer negundo</i>	Box Elder Maple	Very High
<i>Acer pseudoplatanus</i>	Sycamore	Very High
<i>Araucaria species</i>	Norfolk island & Bunya Pines	Very High
<i>Brachychiton acerifolium</i>	Illawarra Flame Tree	Very High
<i>Casuarina species</i>	Casuarinas	Very High
<i>Erythrina species</i>	Coral Trees	Very High
<i>Eucalyptus species</i>	Large Gum Trees	Very High
<i>Jacaranda species</i>	Jacaranda	Very High
<i>Lauris noblis</i>	Bay Laurel	Very High
<i>Pinus species</i>	Pine Trees	Very High
<i>Platanus acerifolia</i>	Plane Trees	Very High
<i>Robinia pseudoacacia</i>	Golden Robinia	Very High
<i>Schinus molle</i>	Pepper Tree	Very High
<i>Brachychiton populneus</i>	Kurrajong	Extreme
<i>Brachychiton gregori</i>	Desert Kurrajong	Extreme
<i>Ficus species</i>	Fig Trees & Rubber Plants	Extreme
<i>Liquidambar styraciflau</i>	Liquidambar, Sweet Gum	Extreme
<i>Populus species</i>	Poplars	Extreme
<i>Salix species</i>	Willows	Extreme

